

North Woods International Elementary School

School Demographics

K-5 Enrollment	264
Capacity	397
Economically Disadvantaged	55%
Of Color	43%
Students with Disabilities	15%
English Learners	8.8%

Attendee Data

Transfer In	41% (117)
Open Enrollment	10% (29)
Eligible for Bussing	43% (123)

Boundary Data

Live in Boundary	198
Closer to Another Elementary	79% (157)
Transfer Out	25% (50)

District Data

Live within One Mile of School	30
Live within Two Miles of School	61



Building Information

Original Construction	1992
Additions	None
Site Size (Acres)	10.9
Square Footage	68,599
Parking Stalls	62

Average Annual Operating Costs \$114,655



Building Assets and Challenges

Assets

- ◆ Adequate parking
- ◆ Large green space
- ◆ Separate bus lane

Challenges

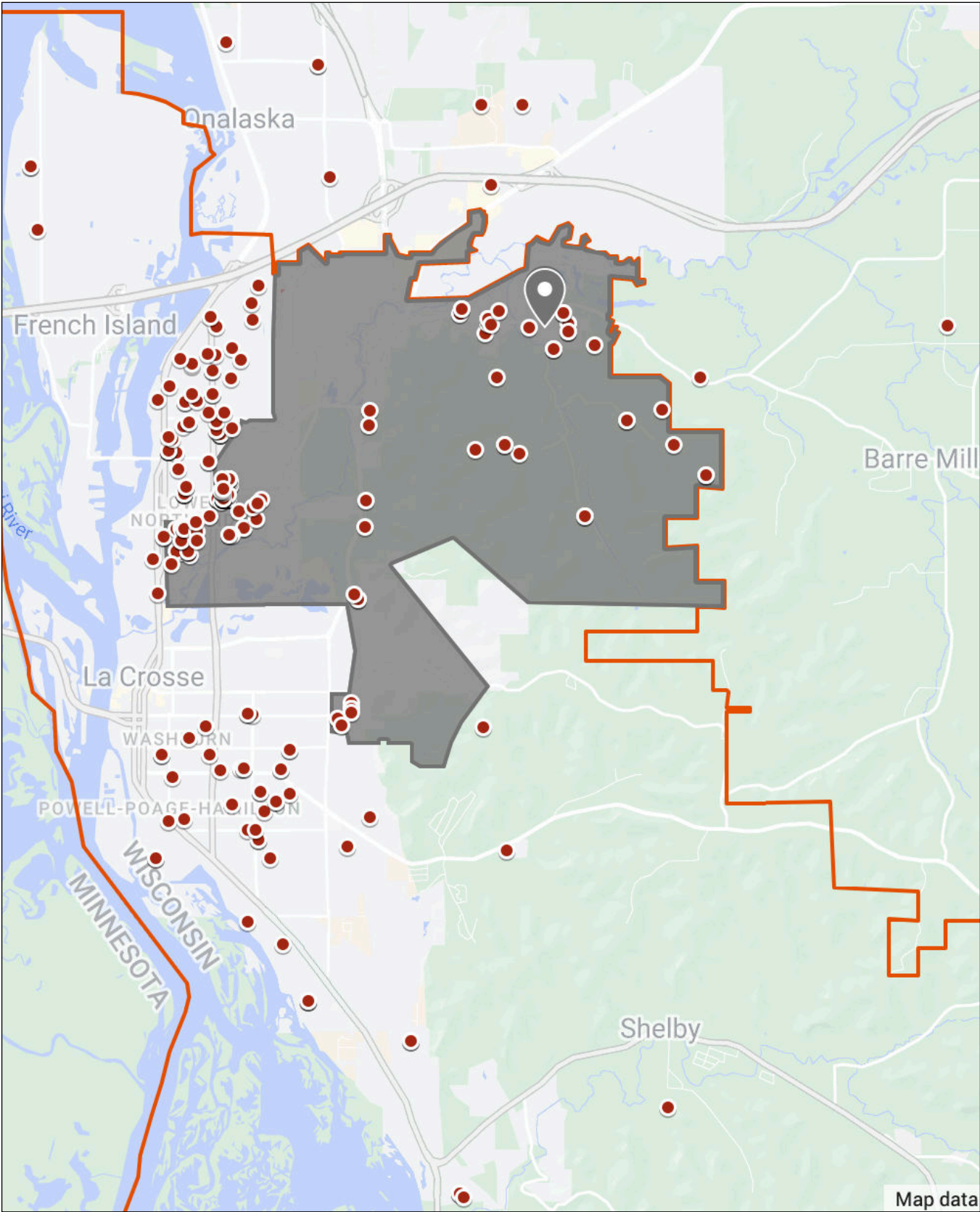
- ◆ Not located where students live
- ◆ Only 16% (45) of students can walk to school
- ◆ Shared gymnasium and cafeteria, but able to be divided

Identified Maintenance and Capital Projects

Flooring, tuck pointing, LED lighting, kitchen flooring and plumbing, high efficiency boiler, classroom shelving, on-demand hot water heater, replace lockers.

Identified Maintenance Costs \$751,089

North Woods International Attendance Area and Student Location



Additional Information

North Woods International historically had a Spanish immersion program. Due to programmatic and staffing challenges, the programming was eventually shifted to International Baccalaureate (IB). The IB program has been in place for three years.

Northside/Coulee Montessori Elementary School

School Demographics

K-5 Enrollment (NS/CM)	232 / 109 = 341
Capacity	549
Economically Disadvantaged	78% / 64%
Of Color	57% / 23%
Students with Disabilities	24% / 15%
English Learners	17.6% / 2.7%

Attendee Data

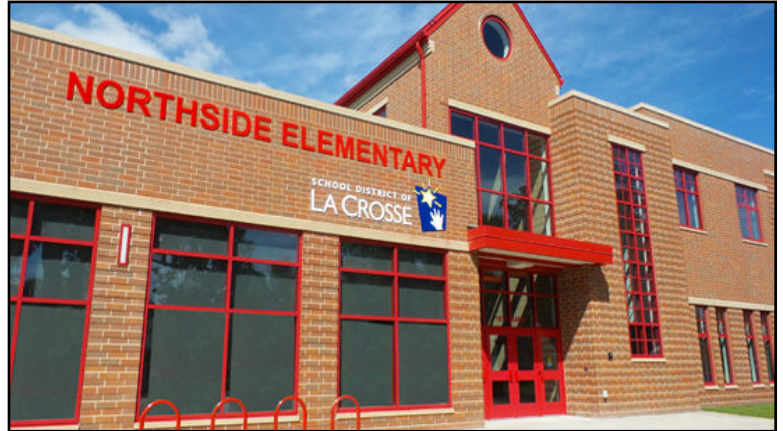
Transfer In	22% / 70% (58/83)
Open Enrollment	2.3% / 12.7% (6/15)
Eligible for Bussing	0% / 0% (0/0)

Boundary Data

Live in Boundary	396
Closer to Another Elementary	0% (0)
Transfer Out	24% (132)

District Data

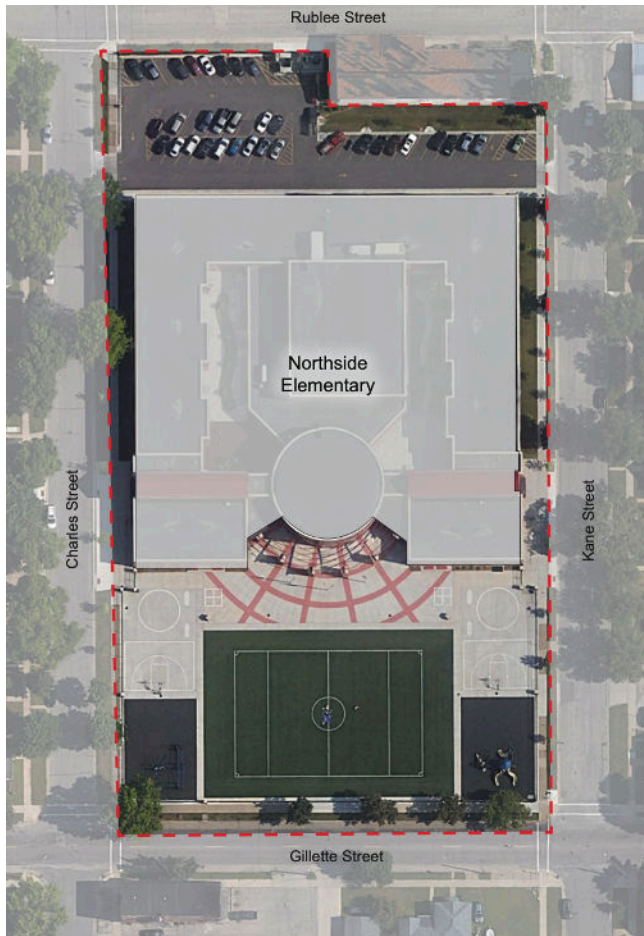
Live within One Mile of School	483
Live within Two Miles of School	680



Building Information

Original Construction	2014
Additions	None
Site Size (Acres)	3.6
Square Footage	86,767
Parking Stalls	40

Average Annual Operating Costs \$147,756



Building Assets and Challenges

Assets

- ◆ A new building in great condition
- ◆ Located in a dense area with many children nearby
- ◆ Solar panels installed through partnership with SOLS

Challenges

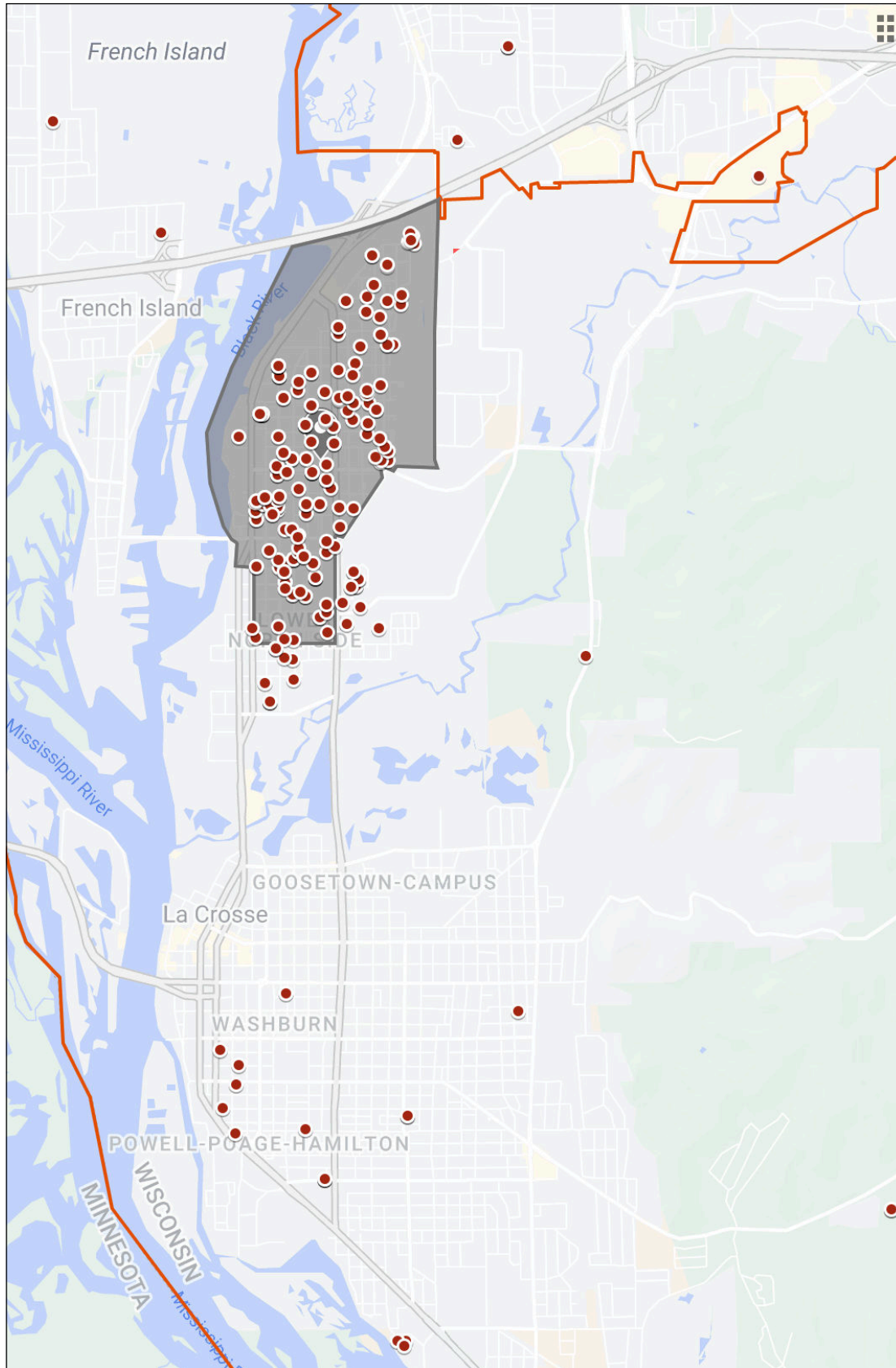
- ◆ A compact site plan
- ◆ Limited outdoor options for students and staff
- ◆ Limited parking
- ◆ Challenging drop off/pickups
- ◆ No dedicated bus lane
- ◆ Two choice schools in one building

Identified Maintenance and Capital Projects

Outside storage shed, cubbies, drinking fountain, replace playground fall zone material, shade on windows, 2nd floor special needs restroom.

Identified Maintenance Costs \$205,840

Northside Attendance Area and Student Location



Additional Information

Northside Elementary has two schools in one building. A school on a year-round calendar and a Montessori school. The opt-outs for the year-round calendar may choose the Montessori school to stay on a traditional calendar. 35 students intradistrict transfer from within the Northside boundary to the Montessori school. Transfers out do not include these students.

Summit Environmental School

School Demographics

K-5 Enrollment	243
Capacity	414
Economically Disadvantaged	53%
Of Color	31%
Students with Disabilities	15%
English Learners	2.8%

Attendee Data

Transfer In	35% (101)
Open Enrollment	2.4% (7)
Eligible for Bussing	21% (60)

Boundary Data

Live in Boundary	205
Closer to Another Elementary	27% (55)
Transfer Out	13% (27)

District Data

Live within One Mile of School	121
Live within Two Miles of School	694



Building Information

Original Construction	1953
Additions	1972
Site Size (Acres)	9.7
Square Footage	58,273
Parking Stalls	76
Average Annual Operating Costs	\$113,638

Building Assets and Challenges

Assets

- ◆ Large green space
- ◆ Separate bus lane
- ◆ Access to the Mississippi River nearby
- ◆ Located in an area where children live

Challenges

- ◆ Small health room
- ◆ Not on city water, relies on a well
- ◆ Design of building - former open concept

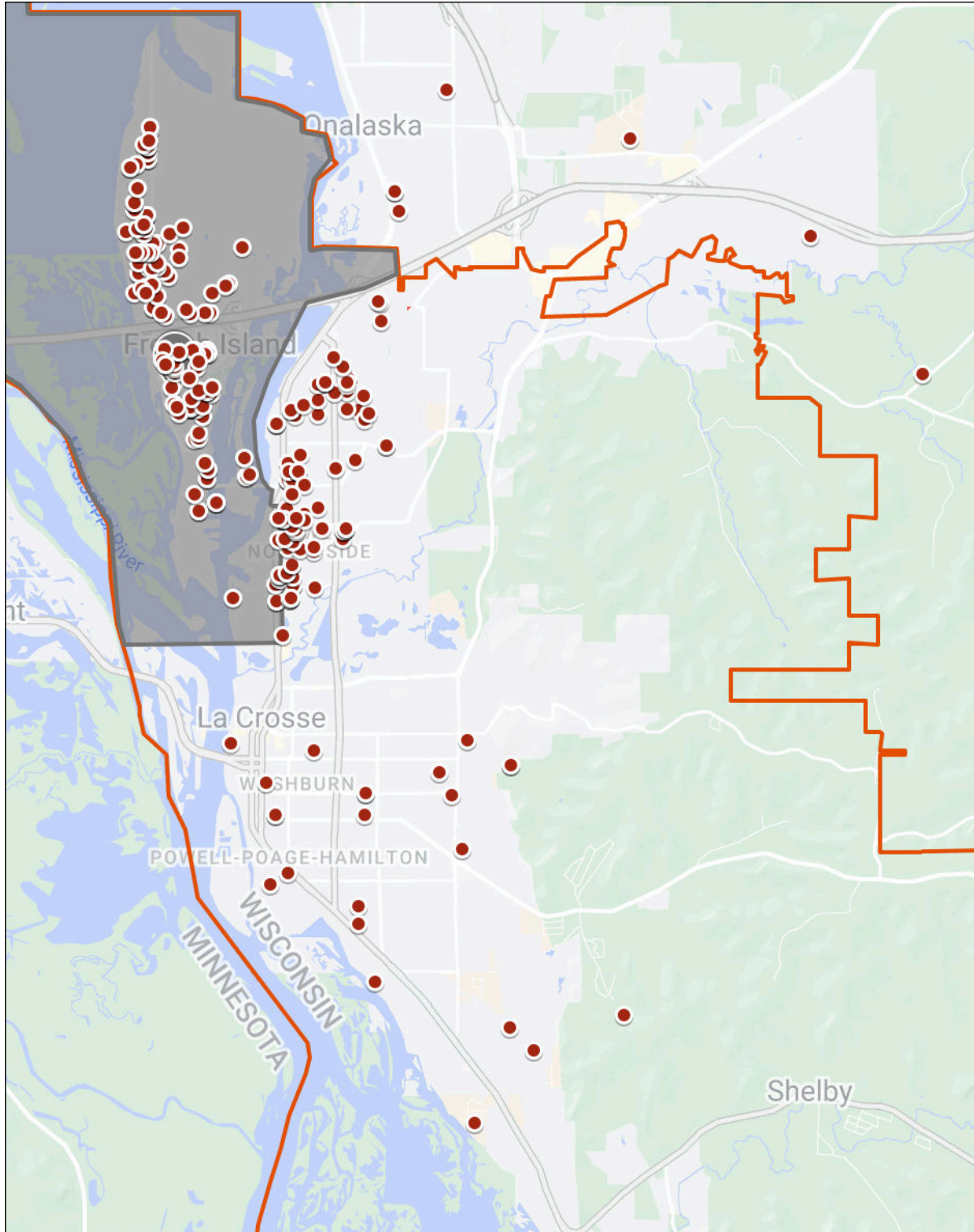
Identified Maintenance and Capital Projects

Flooring in four classrooms, casework in classrooms, two sections of roof, flooring in corridor, paving in sections, casework in classrooms, cafeteria doors, expansion joints, custodial sinks, paint lockers, remodel health room, exterior doors, dumpster enclosure, hallway for inaccessible rooms

Identified Maintenance Costs \$1,984,152



Summit Attendance Area and Student Location



Additional Information

Summit Environmental School is a choice school that offers a focus on environmental education. It has unique resources and an useful location near the Wisconsin River to fulfill this mission.

Emerson Elementary School

School Demographics

K-5 Enrollment	289
Capacity	466
Economically Disadvantaged	31%
Of Color	23%
Students with Disabilities	21%
English Learners	2.6%

Attendee Data

Transfer In	20% (66)
Open Enrollment	2.1% (7)
Eligible for Bussing	0% (0)

Boundary Data

Live in Boundary	383
Closer to Another Elementary	37% (141)
Transfer Out	27% (103)

District Data

Live within One Mile of School	210
Live within Two Miles of School	1194



Building Information

Original Construction	1939
Additions	1954, 1972, 1991
Site Size (Acres)	2.6
Square Footage	57,600
Parking Stalls	72
Average Annual Operating Costs	\$86,983

Building Assets and Challenges

Assets

- ◆ Access to UW La Crosse
- ◆ Located in an area where children live

Challenges

- ◆ Shared gymnasium and cafeteria
- ◆ Small site
- ◆ Green space is owned by the City
- ◆ Oldest elementary building
- ◆ Challenging drop off/pickups

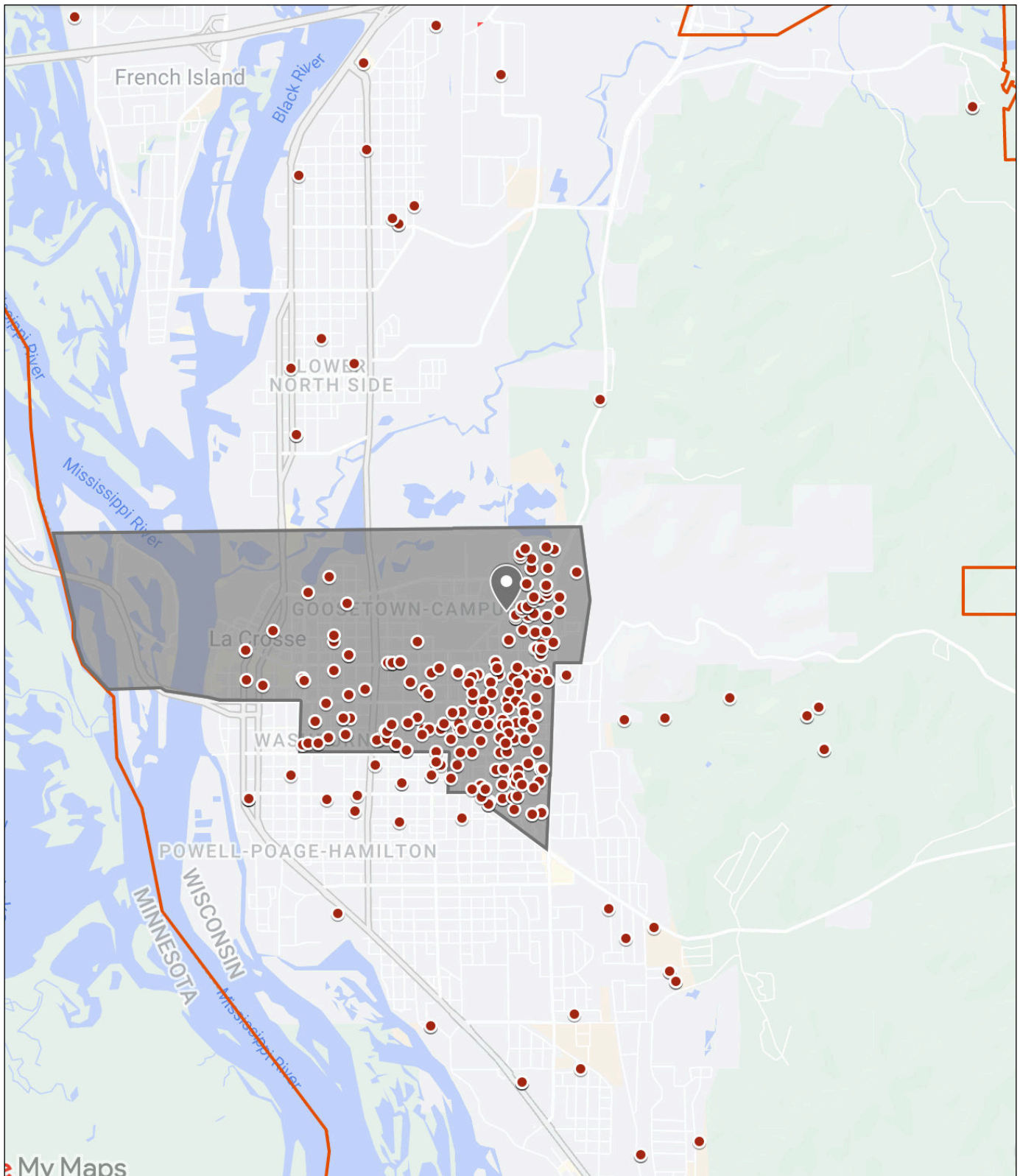
Identified Maintenance and Capital Projects

Tuckpointing, parking at front entrance, replace classroom doors, replace windows in gym, paint lockers, replace casework in classrooms, water heater on demand system, VCT flooring, LED lighting, replace ceilings, parking lot, receiving, sound panels, storage shed, fencing, lintels, storefront/windows, etc.

Identified Maintenance Costs \$2,913,256



Emerson Attendance Area and Student Location



Additional Information

Emerson is located near a variety of City amenities including UW La Crosse, Myrick Park, downtown, and the marsh.

Hamilton Elementary School/SOTA I

School Demographics

K-5 Enrollment	130 / 111 = 241
Capacity	418
Economically Disadvantaged	84% / 36%
Of Color	59% / 18%
Students with Disabilities	29% / 4%
English Learners	4.5% / 0.9%

Attendee Data

Transfer In	60% / 85% (99/100)
Open Enrollment	0.6% / 6.8% (1/8)
Eligible for Bussing	0% / 0% (0/0)

Boundary Data

Live in Boundary	190
Closer to Another Elementary	10% (19)
Transfer Out	64% (121)

District Data

Live within One Mile of School	580
Live within Two Miles of School	1331



Building Information

Original Construction	1959
Additions	1984, 2021
Site Size (Acres)	2.6
Square Footage	64,950
Parking Stalls	0
Average Annual Operating Costs	\$96,629

Building Assets and Challenges

Assets

- ◆ Located near Viterbo and health systems
- ◆ Located in an area where children live
- ◆ Recent \$4.8M addition of a gym, classrooms, library and solar panels
- ◆ Community School

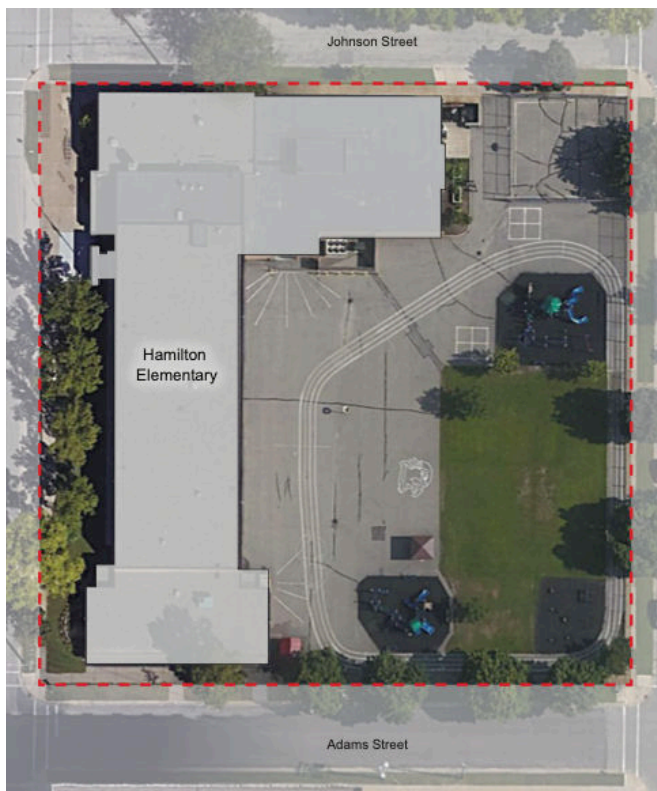
Challenges

- ◆ Small site
- ◆ Limited green space
- ◆ Challenging drop off/pickups

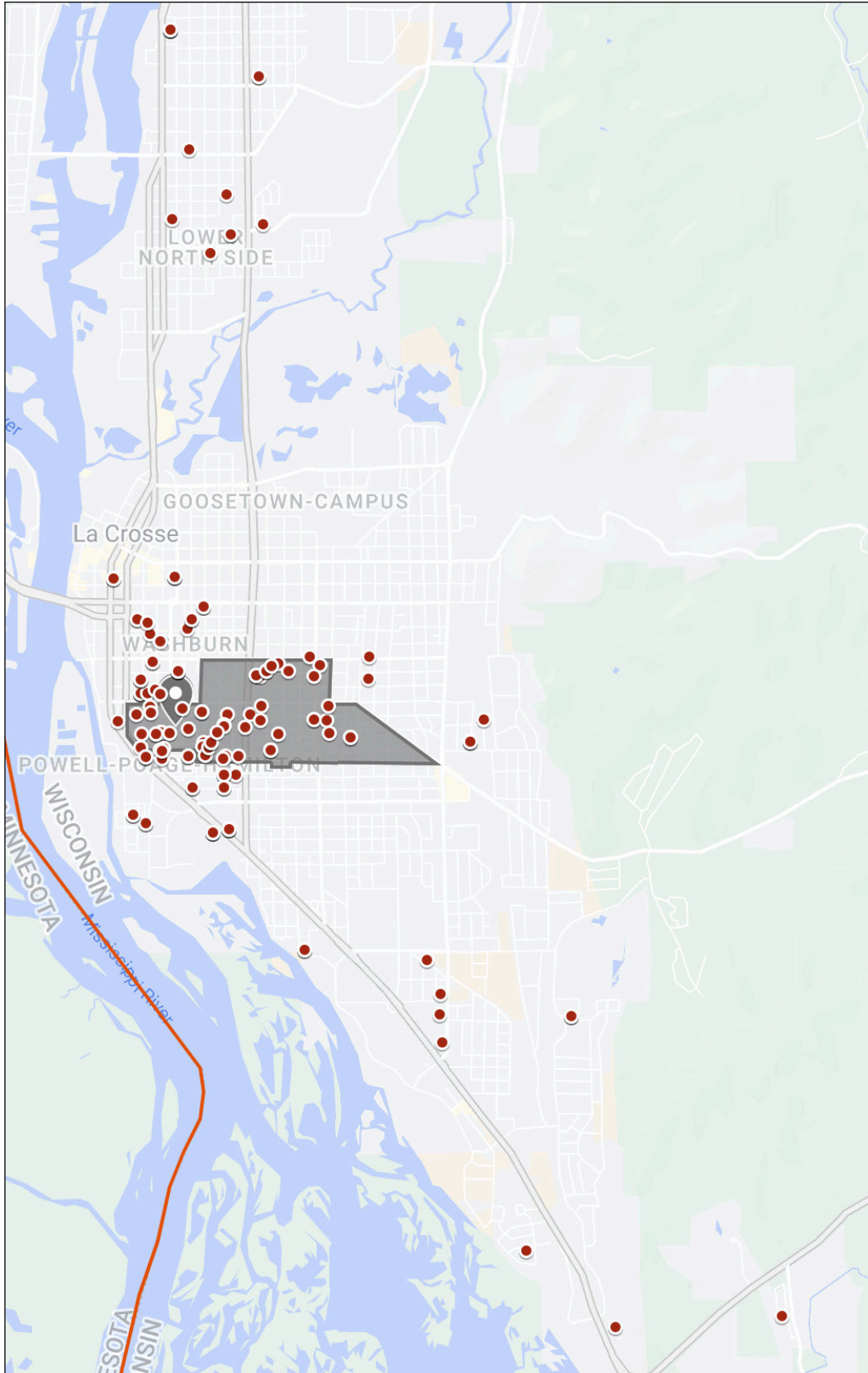
Identified Maintenance and Capital Projects

2nd floor ceilings and lighting, exterior doors, flooring in some rooms, casework in classrooms, faucets in classrooms, windows with thermal units, lockers, tuck pointing, playground fall zone material.

Identified Maintenance Costs \$1,053,075



Hamilton Attendance Area and Student Location



Additional Information

The Hamilton Elementary School building houses a traditional elementary school and a separate charter school, the School of Technology and Arts I (SOTA I). Until the end of the 2022-2023 school year, the traditional elementary school ran a year-round model calendar.

Spence Elementary School

School Demographics

K-5 Enrollment	298
Capacity	424
Economically Disadvantaged	55%
Of Color	32%
Students with Disabilities	15%
English Learners	6.6%

Attendee Data

Transfer In	35% (119)
Open Enrollment	3.0% (10)
Eligible for Bussing	5.3% (18)

Boundary Data

Live in Boundary	190
Closer to Another Elementary	33% (92)
Transfer Out	21% (60)

District Data

Live within One Mile of School	616
Live within Two Miles of School	1574



Building Information

Original Construction	1953
Additions	1955, 1962, 1973, 1992, 1994
Site Size (Acres)	7.9
Square Footage	60,190
Parking Stalls	75

Average Annual Operating Costs \$94,746

Building Assets and Challenges

Assets

- ◆ A lot of green space with a park nearby
- ◆ Located in an area where children live
- ◆ Parking available
- ◆ Multiple playground sites

Challenges

- ◆ Poor construction
- ◆ Challenging layout
- ◆ Challenging pick up/drop off for busses

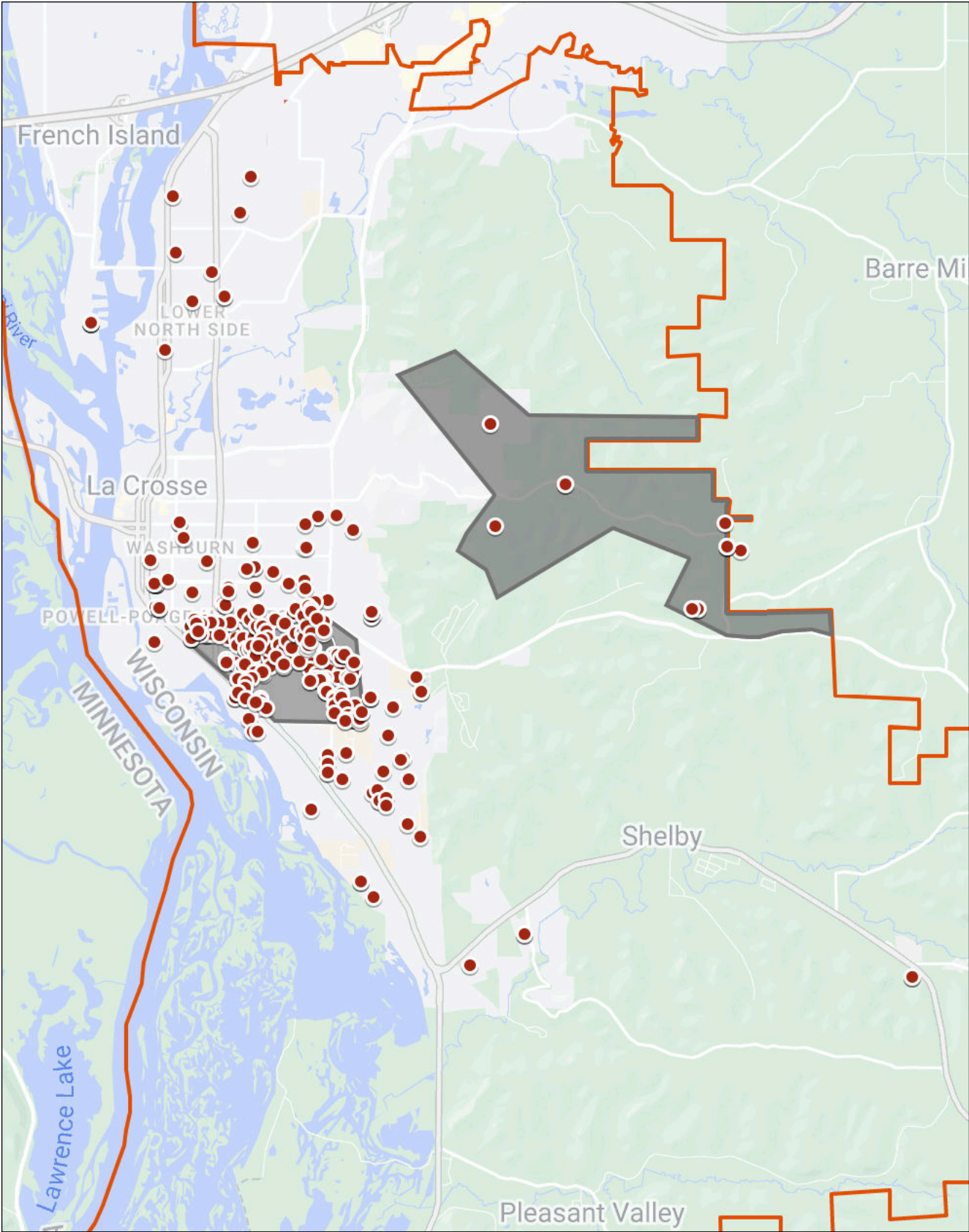
Identified Maintenance and Capital Projects

Two sections of roof, hallway flooring, exterior doors, lunch tables and wall, classroom additions, playground paving, exterior walls, replace brick, doors in kitchen, classroom sinks, casework in classrooms, storage by receiving doors, parking lot pavement, replace wood doors, VCT flooring, ceilings, gyms floor, storefront/window, piping, grease trap, LED lighting

Identified Maintenance Costs \$3,410,337



Spence Attendance Area and Student Location



Additional Information

Spence Elementary School has an attendance island that was put in place in the early 1990s to create socioeconomic balance across the school district.

State Road Elementary School

School Demographics

K-5 Enrollment	282
Capacity	397
Economically Disadvantaged	42%
Of Color	21%
Students with Disabilities	14%
English Learners	3.9%

Attendee Data

Transfer In	25% (78)
Open Enrollment	3.9% (12)
Eligible for Bussing	19% (59)

Boundary Data

Live in Boundary	330
Closer to Another Elementary	58% (191)
Transfer Out	29% (97)

District Data

Live within One Mile of School	328
Live within Two Miles of School	1097



Building Information

Original Construction	1957
Additions	1959, 1969, 1989, 2012
Site Size (Acres)	10.4
Square Footage	58,882
Parking Stalls	96

Average Annual Operating Costs \$97,208

Building Assets and Challenges

Assets

- ◆ A lot of green space
- ◆ Located in an area where children live
- ◆ Good drop off/pickups
- ◆ Able to be added on to by building up

Challenges

- ◆ Smaller school footprint
- ◆ Multiple levels of building making access difficult
- ◆ Shared gym/cafeteria, smaller gym than others

Identified Maintenance and Capital Projects

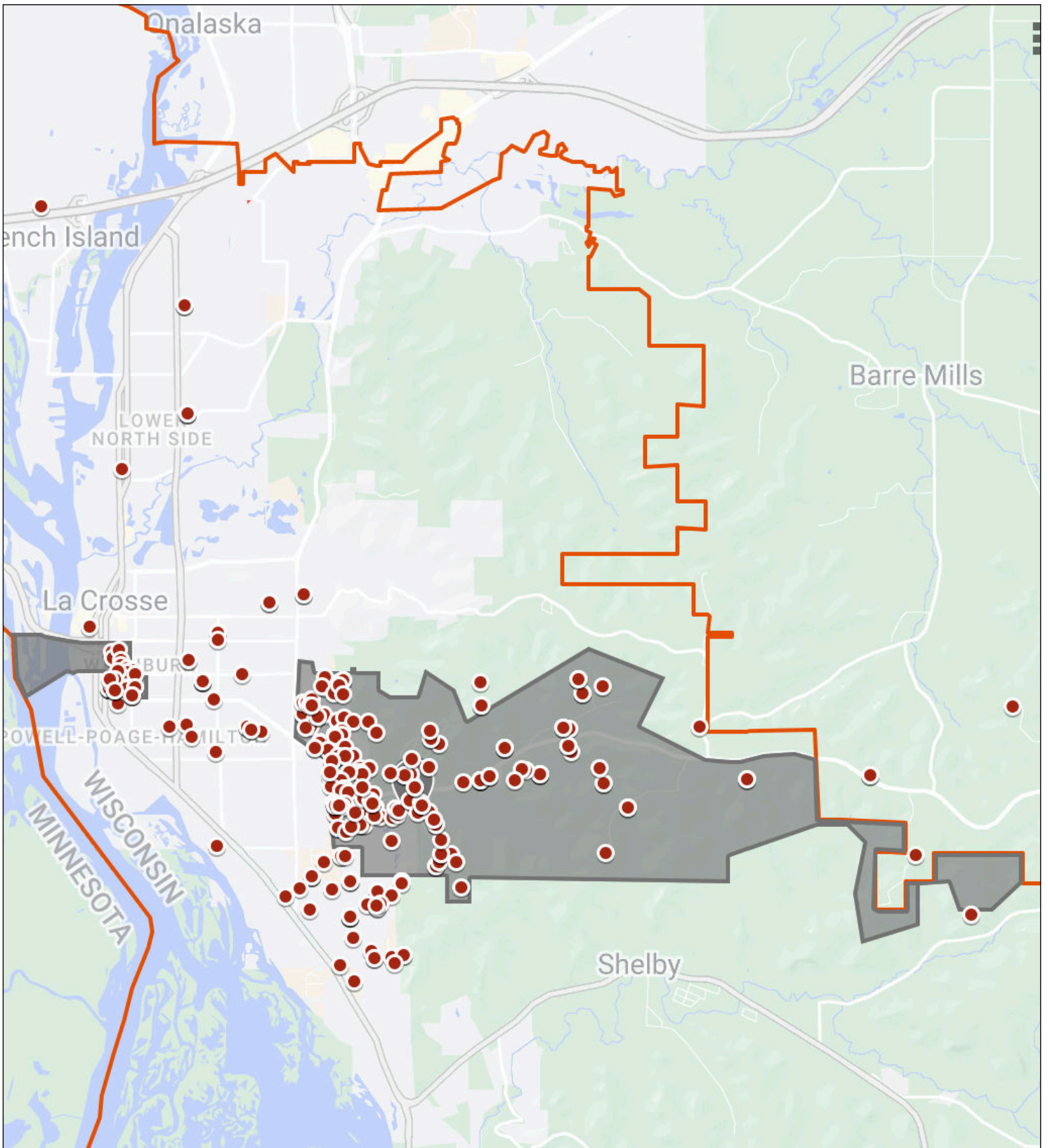
Roofing, windows on west addition, exterior doors, casework in classrooms, brick waterproofing, remodel second follow restrooms, add protective shelter to south entrance, replace 1st floor restroom fixtures, add storage to six classrooms, replace chiller.

Identified Maintenance Costs \$1,227,193

Capital Improvement: Gym addition \$2,604,000



State Road Attendance Area and Student Location



Additional Information

State Road Elementary School has an attendance island that was put in place in the early 1990s to create socioeconomic balance across the school district.

Hintgen Elementary School

School Demographics

K-5 Enrollment	226
Capacity	447
Economically Disadvantaged	69%
Of Color	45%
Students with Disabilities	15%
English Learners	12.2%

Attendee Data

Transfer In	26% (65)
Open Enrollment	2.4% (6)
Eligible for Bussing	16% (40)

Boundary Data

Live in Boundary	352
Closer to Another Elementary	42% (146)
Transfer Out	44% (156)

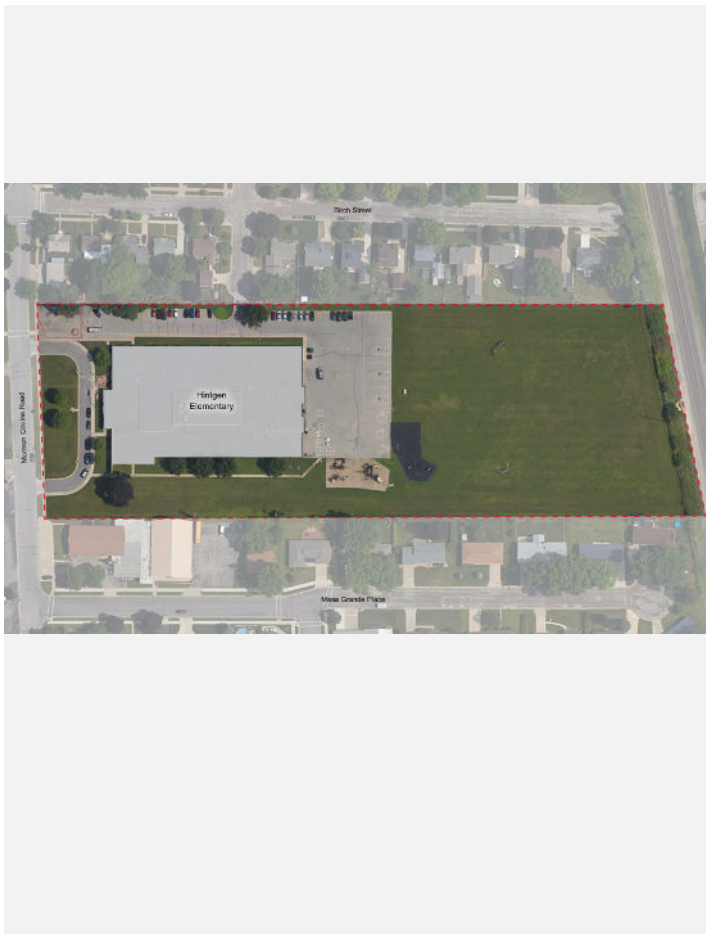
District Data

Live within One Mile of School	375
Live within Two Miles of School	925



Building Information

Original Construction	1968
Additions	1971
Site Size (Acres)	7.9
Square Footage	60,263
Parking Stalls	62
Average Annual Operating Costs	\$107,743



Building Assets and Challenges

Assets

- ◆ A lot of green space
- ◆ Located in an area where children live
- ◆ Good drop off/pickups

Challenges

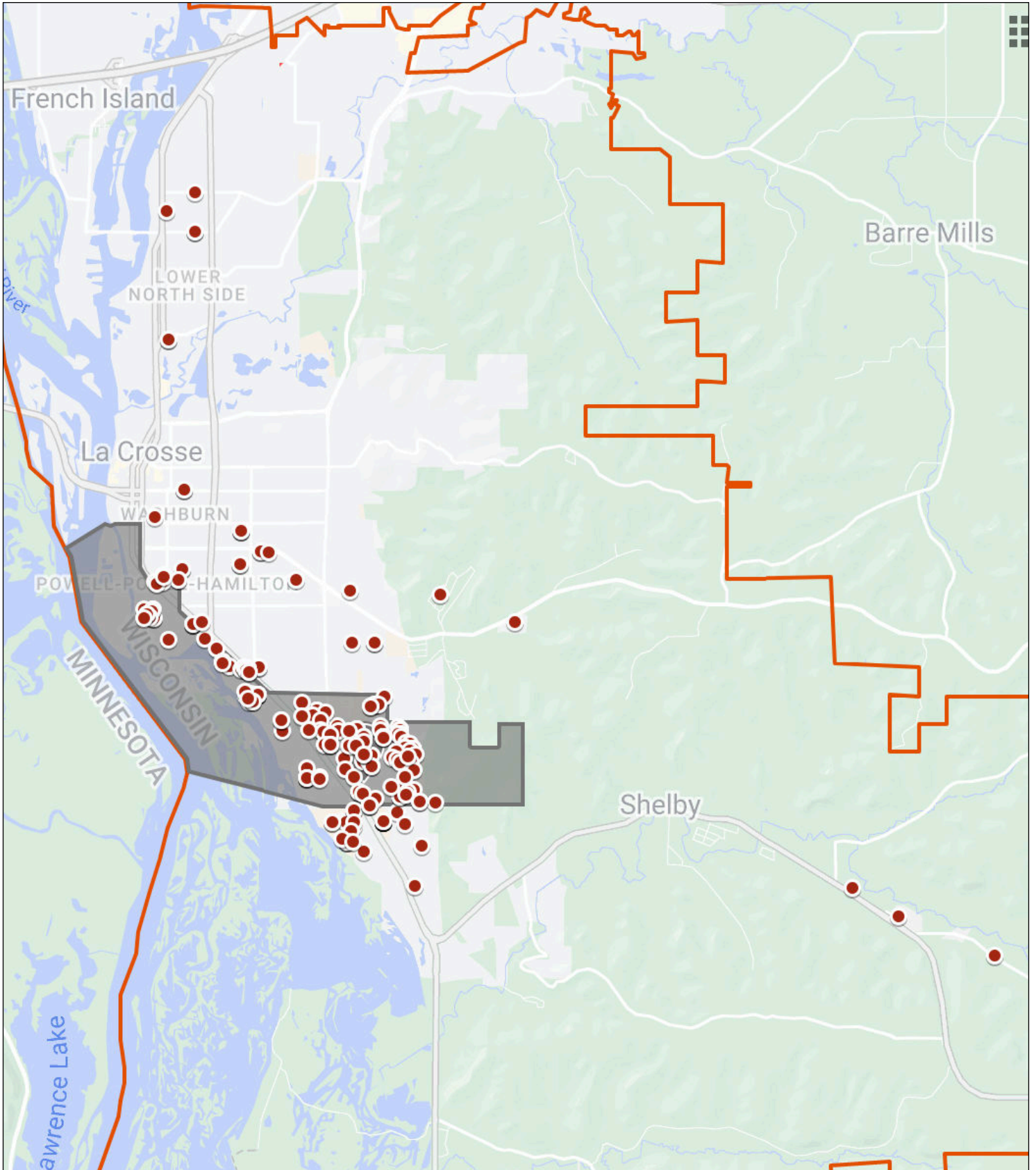
- ◆ Older design with fewer exterior walls and windows
- ◆ Insufficient parking (use church parking across the street)
- ◆ North classrooms do not have permanent walls

Identified Maintenance and Capital Projects

Student lockers, energy efficient doors to playground, divider wall between 5th grade rooms, replace cafeteria tables, casework in classrooms, replace chiller, replace folding walls, enclosures on dumpsters, add wall benches, expand field sprinkler system, add outdoor storage.

Identified Maintenance Costs	\$904,978
------------------------------	-----------

Hintgen Attendance Area and Student Location



Additional Information

Hintgen Elementary School has a unique boundary and students who live across Highway 35 are in a hazardous transportation zone and provided transportation to school.

Southern Bluffs Elementary School

School Demographics

K-5 Enrollment	275
Capacity	415
Economically Disadvantaged	32%
Of Color	11%
Students with Disabilities	17%
English Learners	0.9%

Attendee Data

Transfer In	14% (43)
Open Enrollment	8.1% (25)
Eligible for Bussing	33% (101)

Boundary Data

Live in Boundary	318
Closer to Another Elementary	33% (106)
Transfer Out	24% (75)

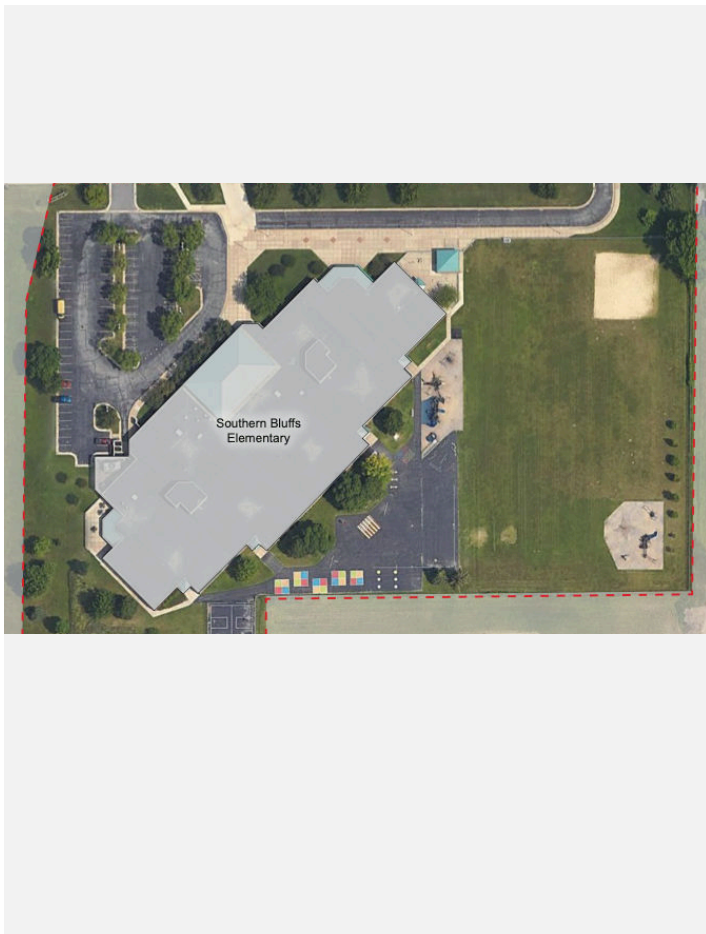
District Data

Live within One Mile of School	68
Live within Two Miles of School	278



Building Information

Original Construction	1992
Additions	None
Site Size (Acres)	8.1
Square Footage	71,483
Parking Stalls	73
Average Annual Operating Costs	\$107,743



Building Assets and Challenges

Assets

- ◆ A lot of green space
- ◆ Good drop off/pickups

Challenges

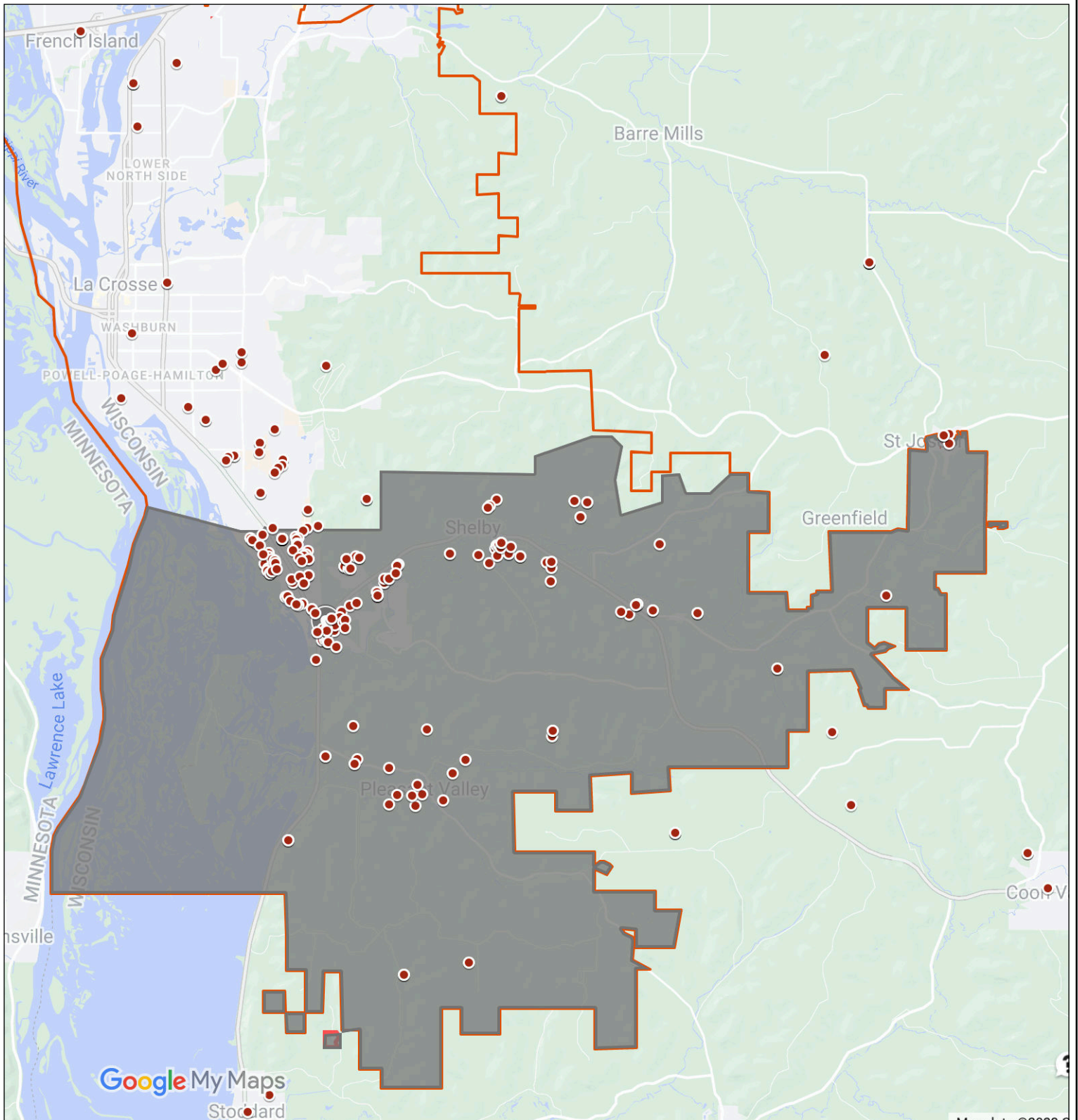
- ◆ Location is challenging for walking students
- ◆ Shared gymnasium and cafeteria, but able to be divided

Identified Maintenance and Capital Projects

Acoustical treatment to cafeteria/gym, AC unit in office area, high efficiency condensing boiler, replace steel exterior doors, replace kitchen flooring, remodel LMC, replace flooring in rooms, add to irrigation system, add outdoor storage, replace lobby flooring, paint lockers, replace asphalt in play area.

Identified Maintenance Costs \$1,056,626

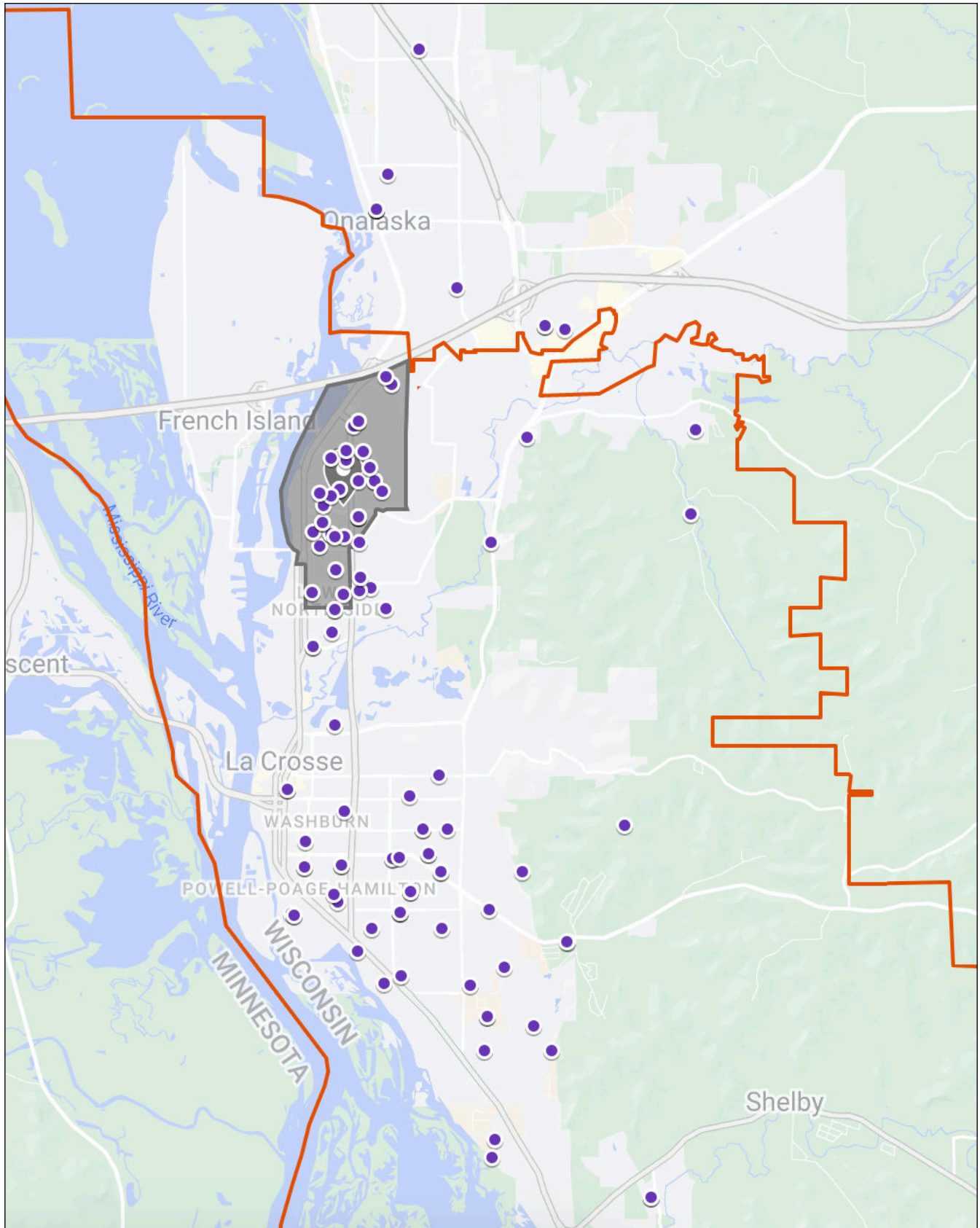
Southern Bluffs Attendance Area and Student Location



Additional Information

Southern Bluffs Elementary School has the largest attendance area and part of its attendance area is in Vernon County.

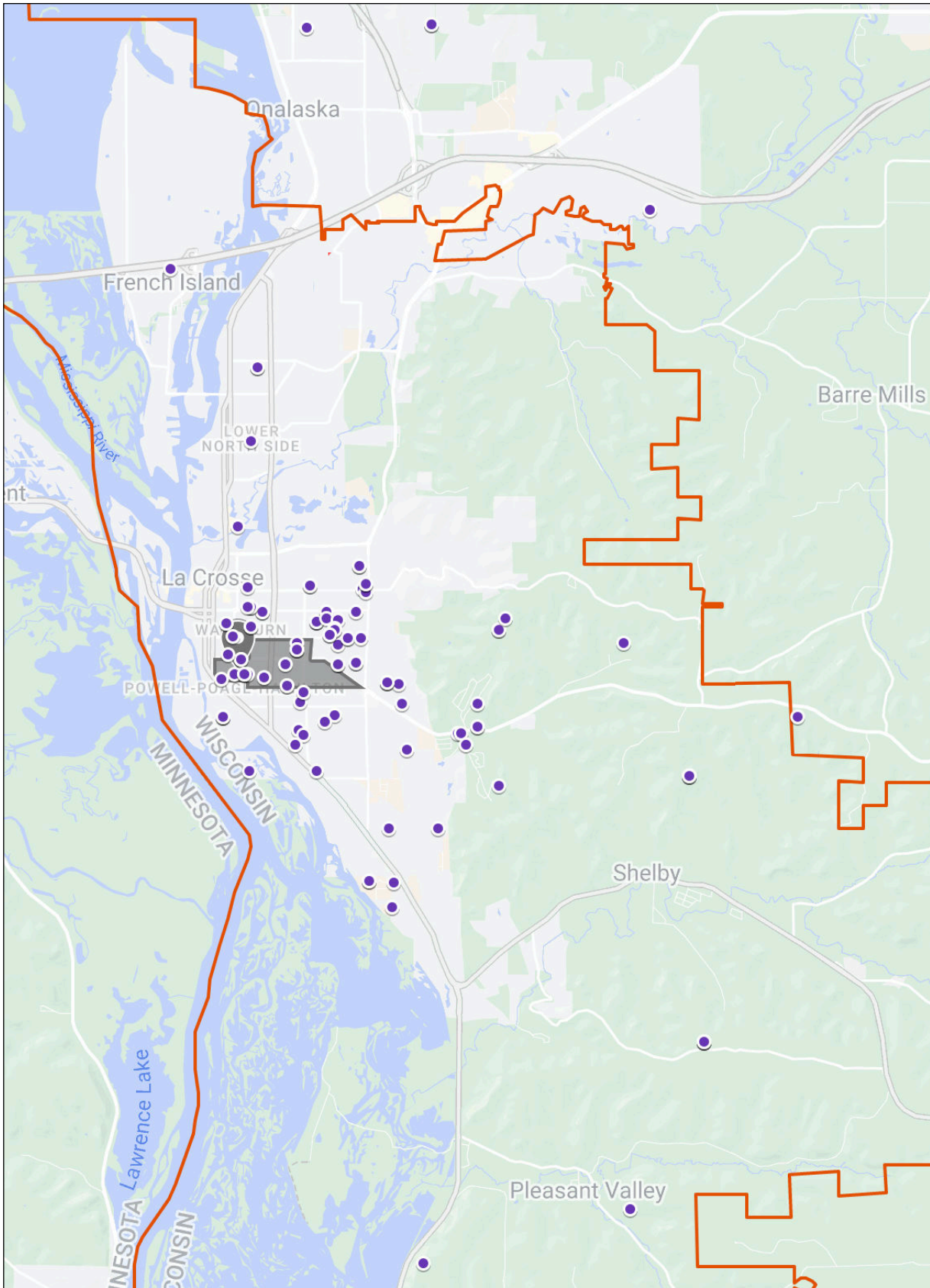
Coulee Montessori Student Location



Additional Information

Coulee Montessori is a public charter school, that is an instrumentality of the school district, that offers a unique Montessori education.

SOTA I Student Location



Additional Information

SOTA I is a public charter school, that is an instrumentality of the school district, that offers a unique education rooted in the arts.