

Picture Day

MONDAY  
SEPTEMBER 16

Picture Retake Day

WEDNESDAY  
NOVEMBER 6

Cell Phones Off and Away During the School Day

Calling for an absence, 608-789-7740 press 1 for attendance

# BACK TO SCHOOL

## Welcome Back!

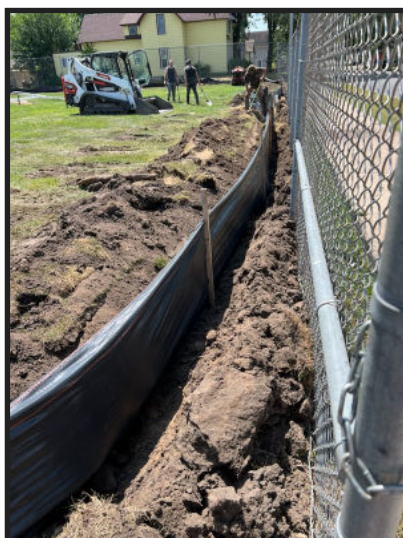
We are excited for the 2024-2025 school year to serve the families of Logan Middle School/SOTA II. We look forward to partnering with families and getting to know the students and their goals and aspirations.

The Renew the Block Project started critical home repairs on several neighborhood houses this summer, and our walking track project is underway!

Kellie Schmitz, Principal

Sam Parkhurst, Associate Principal/Activities Director

Kalista Richardson, Dean of Students



**RESPONSIVE TO STUDENTS**

**SOCIAL EMOTIONAL LEARNING**  
Social emotional health is emphasized at Logan MS. Students learn a variety of strategies for self management, self awareness, relationship skills, social awareness and responsible decision making.

**RESTORATIVE JUSTICE WITH THE YWCA**  
Logan Middle School partners with the YWCA to provide students with a positive way to resolve conflicts, lean on peers, and help with friendship strategies.

**Resiliency Center**  
Our Resiliency Center is a space for students who need a space during the school day to reset and regulate with an educator.

**SCHOOL COUNSELORS**  
SMALL GROUPS & INDIVIDUAL APPOINTMENTS

**SOCIAL WORKER**  
SMALL GROUPS & INDIVIDUAL APPOINTMENTS

**CELL PHONES OFF AND AWAY DURING THE SCHOOL DAY!**  
During the school day, students focus on learning while their personal cell phones are locked away in their homeroom classes.

**STUDENT CLUBS**  
Students have a variety of outlets to express themselves, work on projects, and learn new skills. Sixteen different clubs are offered for students after school and snacks are provided.

# Open House/Orientation:

## 6th Grade:

On Friday, August 23rd, there will be an Orientation for all 6th graders from 8 a.m. - 12 p.m. This orientation is led by our 8th grade WEB (Where Everyone Belongs) leaders and WEB teacher coordinators. During the orientation, students will meet new friends, tour the building, understand the schedule, and participate in many community building activities. It is a great time and allows students to feel comfortable in the building.

On Monday, August 26th, 6th grade homerooms teachers will have Jump Start Conferences with families. In this mailing there is information about how to sign up for those conferences and which homeroom teacher your child has.

## 7th and 8th Grades:

On Wednesday, August 27th, families will meet with their child's homeroom teacher for a 10 minute Meet and Greet Meeting. At this meeting, families will be able to talk with the teacher and receive their child's schedule and locker. In addition, in the small gym: yearbooks will be sold, the school store will open, our activities director will be available to collect physical forms and answer questions, and there will be several area youth organizations available.

Directions to sign up for the Meet and Greet Meetings are enclosed in this mailing.

If you have any questions about signing up for the 6th grade Jump Start Conferences or the 7th & 8th grade Meet and Greet Meetings, please feel free to call Logan Middle School main office at 608-789-7740.

## Tidbits:

During 1st hour, students can sign up for breakfast.

**Please note:** Students are **NOT allowed** to bring food to school to eat it during 1st hour. If students eat breakfast before school, it must be eaten before the doors open at 7:25 a.m.

### *PTO*

#### *FUNDRAISER:*

PTO will be hosting a fundraiser on August 27th from 12 p.m. - 5 p.m. in the small gym...selling a hot dog meal. Please stop in and support the PTO.

***Please consider joining our PTO. It is a terrific way to get involved!***

#### **Partnering Together**

Partnership between home and school is important especially during middle school when there are so many changes socially, emotionally, physically, and academically.

Together school and families can support one another to best help students navigate the changes and be successful.

There is an insert that has information about Logan Middle School's data and expectations.