

The logo for Lamar CISD features the word "LAMAR" in a bold, white, sans-serif font. The letter "A" is stylized with a fan-like pattern of lines radiating from its center. To the right of "LAMAR" is the text "CISD" in a smaller, white, sans-serif font. The entire logo is set against a dark blue background that is part of a larger graphic overlay.

**LAMAR**CISD

A PROUD TRADITION | A BRIGHT FUTURE

# Melton, Randle, ES 36 Attendance Boundary Options

Presented to the  
Attendance Boundary Committee  
February 5, 2024

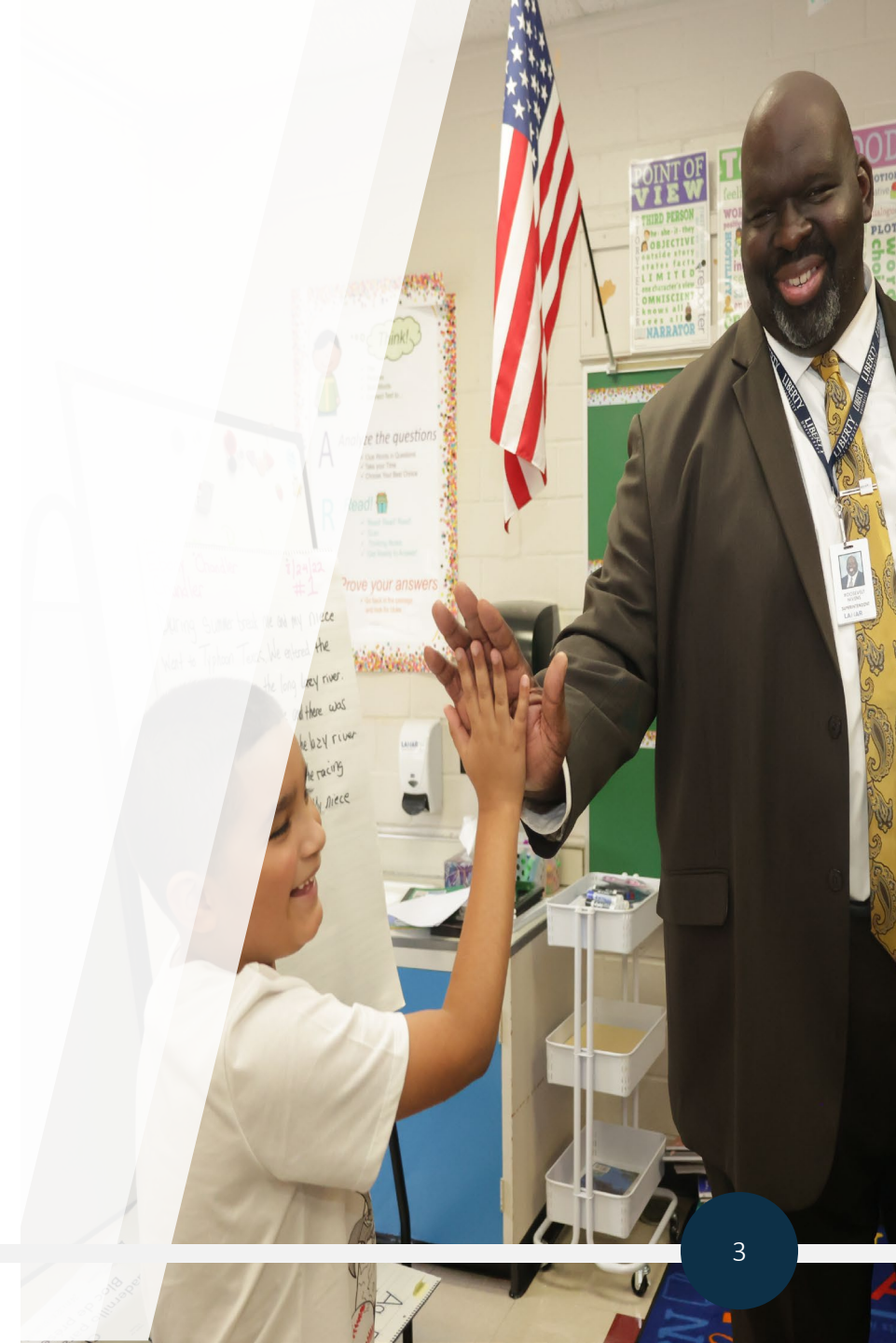


# Welcome



# Introductions

- For Committee Members:
  - Name
  - School
  - Children (grades/schools)
  - How long have you lived in the community?
- For Staff Members:
  - Name
  - Position



# We're growing!



LAMAR CISD  
FASTEST-GROWING SCHOOL DISTRICT





# Houston New Home Ranking Report

ISD Ranked by Annual Closings – 3Q23


Rank	District Name	Annual Starts	Annual Closings	Inventory	VDL	Future
<b>1</b>	<b>LAMAR CISD</b>	<b>3,818</b>	<b>4,110</b>	<b>2,434</b>	<b>5,010</b>	<b>37,268</b>
2	CONROE ISD	3,288	3,757	2,388	5,640	25,294
3	KATY ISD	3,025	2,847	2,029	3,376	15,389
4	FORT BEND ISD	2,276	2,756	1,288	1,805	10,928
5	HOUSTON ISD	2,530	2,620	2,346	4,123	14,258
6	CYPRESS-FAIRBANKS ISD	2,487	2,451	1,755	2,375	12,587
7	ALVIN ISD	1,373	1,810	1,056	2,506	16,946
8	MAGNOLIA ISD	1,547	1,565	1,111	3,382	33,301
9	NEW CANEY ISD	1,109	1,337	733	958	9,122
10	SPRING ISD	1,161	1,281	474	838	6,550
11	WALLER ISD	1,524	1,264	944	1,731	40,340
12	TOMBALL ISD	1,021	1,215	649	1,654	3,021
13	HUMBLE ISD	811	766	503	736	2,456
14	WILLIS ISD	976	762	879	2,791	9,577
15	GOOSE CREEK CISD	790	639	462	530	2,921
16	MONTGOMERY ISD	395	611	343	1,335	6,676
17	DICKINSON ISD	691	608	567	2,471	9,567
18	SPLENDORA ISD	825	603	730	1,922	11,492
19	SPRING BRANCH ISD	432	541	457	637	1,222
20	BARBERS HILL ISD	375	488	224	476	5,330



# District Housing Overview by Elementary Zone

Elementary	Annual Starts	Quarter Starts	Annual Closings	Quarter Closings	Under Const.	Inventory	Vacant Dev. Lots	Future
ADOLPHUS	28	2	84	17	4	6	3	77
ARREDONDO	52	21	45	10	42	43	64	549
AUSTIN	0	0	0	0	0	0	1	0
BEASLEY	76	65	30	5	69	73	434	4,567
BENTLEY	210	104	307	42	126	171	396	1,321
BOWIE	111	61	0	0	111	111	280	900
CAMPBELL	0	0	0	0	0	0	0	0
CARTER	158	57	209	43	95	107	435	14,332
CULVER	71	26	78	14	33	51	114	794
DICKINSON	0	0	0	0	0	0	0	0
FROST	72	22	200	29	32	49	245	962
GRAY	254	133	41	24	188	214	379	1,982
HUBENAK	0	0	7	0	0	0	1	117
HUGGINS	752	214	889	203	297	447	727	4,624
HUTCHISON	0	0	0	0	0	0	0	0
LINDSEY	347	137	396	69	190	245	339	743
LONG	48	23	104	10	30	39	20	24
MCNEILL	0	0	0	0	0	0	0	0
MEYER	301	92	266	40	177	191	50	554
MORGAN	374	184	230	76	242	285	844	1,624
PHELAN	100	9	235	47	26	46	151	1,116
RAY	0	0	0	0	0	0	0	15
SMITH	0	0	0	0	0	0	0	145
TAMARRON	768	162	738	248	214	338	417	2,726
THOMAS	74	0	187	14	0	1	2	88
TRAVIS	0	0	0	0	0	0	0	8
VELASQUEZ	16	0	52	11	6	6	53	0
WILLIAMS	6	5	12	8	11	11	55	0
<b>Grand Total</b>	<b>3,818</b>	<b>1,317</b>	<b>4,110</b>	<b>910</b>	<b>1,893</b>	<b>2,434</b>	<b>5,010</b>	<b>37,268</b>

 Highest activity in the category

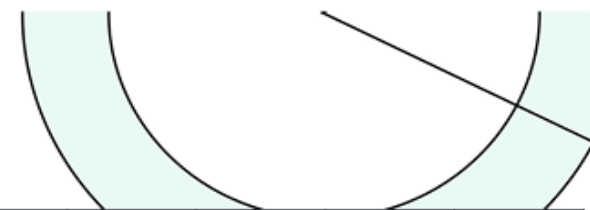
 Second highest activity in the category

 Third highest activity in the category

\*\* Totals do not include age-restricted communities



# Ten Year Forecast by Grade Level



Year (Oct.)	EE	PK	K	1st	2nd	3rd	4th	5th	6th	7th	8th	9th	10th	11th	12th	Total	Total Growth	% Growth
2019/20	457	856	2,576	2,645	2,577	2,593	2,581	2,754	2,707	2,739	2,581	2,778	2,597	2,526	2,251	35,218	2,831	8.7%
2020/21	268	905	2,575	2,732	2,786	2,679	2,718	2,559	2,870	2,806	2,879	2,794	2,782	2,581	2,411	36,345	1,127	3.2%
2021/22	299	1,107	2,927	2,976	2,980	2,953	2,936	2,938	2,898	3,063	3,024	3,369	2,930	2,867	2,359	39,626	3,281	9.0%
2022/23	368	1,389	2,954	3,301	3,200	3,261	3,153	3,128	3,134	3,086	3,265	3,341	3,383	2,958	2,541	42,462	2,836	7.2%
2023/24	260	1,583	3,102	3,193	3,410	3,346	3,386	3,315	3,266	3,244	3,205	3,567	3,396	3,409	2,703	44,385	1,923	4.5%
2024/25	275	1,612	3,218	3,347	3,331	3,562	3,475	3,589	3,490	3,392	3,352	3,541	3,470	3,361	3,159	46,174	1,789	4.0%
2025/26	272	1,654	3,380	3,492	3,514	3,509	3,735	3,648	3,858	3,686	3,566	3,732	3,530	3,421	3,082	48,079	1,905	4.1%
2026/27	269	1,694	3,511	3,632	3,652	3,672	3,668	3,915	3,950	4,050	3,867	3,964	3,724	3,492	3,160	50,220	2,141	4.5%
2027/28	272	1,799	3,643	3,765	3,802	3,841	3,848	3,839	4,248	4,177	4,258	4,318	3,924	3,685	3,213	52,632	2,412	4.8%
2028/29	271	1,844	3,776	3,903	3,933	3,988	4,008	4,017	4,172	4,485	4,410	4,763	4,306	3,882	3,389	55,147	2,515	4.8%
2029/30	271	1,888	3,878	4,017	4,079	4,111	4,185	4,190	4,394	4,425	4,726	4,944	4,742	4,269	3,576	57,695	2,548	4.6%
2030/31	271	1,931	3,999	4,107	4,172	4,226	4,301	4,361	4,594	4,658	4,685	5,290	4,917	4,701	3,936	60,149	2,454	4.3%
2031/32	271	1,972	4,086	4,192	4,247	4,346	4,419	4,484	4,739	4,884	4,894	5,265	5,268	4,875	4,328	62,270	2,121	3.5%
2032/33	271	2,005	4,281	4,362	4,323	4,376	4,522	4,588	4,910	4,951	5,115	5,506	5,243	5,218	4,408	64,079	1,809	2.9%
2033/34	271	2,038	4,442	4,546	4,464	4,418	4,468	4,621	5,023	5,128	5,163	5,757	5,483	5,204	4,715	65,741	1,662	2.6%

Yellow box = largest grade per year  
 Green box = second largest grade per year



# Ten Year Forecast by Elementary Campus

Campus	Capacity	Fall	ENROLLMENT PROJECTIONS									
		2023/24	2024/25	2025/26	2026/27	2027/28	2028/29	2029/30	2030/31	2031/32	2031/33	2031/34
Seguin Early Childhood	326	298	306	316	321	401	416	431	441	451	461	471
Adolphus	854	986	1,024	1,036	1,052	1,051	1,058	1,055	1,052	1,036	1,037	1,034
Arredondo	854	672	667	701	743	751	813	873	935	1,003	1,071	1,128
Austin	625	577	561	555	552	549	555	555	554	550	544	540
Beasley	336	394	401	412	421	442	471	518	580	645	724	818
Bently	854	1,210	1,313	1,434	1,546	1,644	1,780	1,887	1,976	2,028	2,055	2,071
Bowie	565	426	420	429	435	420	436	442	453	466	481	493
Campbell	854	423	412	383	386	376	368	387	399	409	415	409
Carter	854	986	1,041	1,096	1,154	1,215	1,292	1,343	1,414	1,497	1,611	1,742
Culver	854	837	865	884	880	891	943	997	1,054	1,089	1,113	1,121
Dickinson	810	560	573	556	551	546	518	508	497	489	482	477
Frost	854	1,072	1,087	1,120	1,155	1,169	1,192	1,210	1,213	1,195	1,184	1,190
Gray	854	444	466	477	491	516	528	553	575	599	628	668
Hubenak	854	1,156	1,351	1,361	1,377	1,386	1,382	1,394	1,400	1,396	1,399	1,398
Huggins	585	779	1,217	1,347	1,474	1,683	1,886	2,100	2,197	2,374	2,542	2,686
Hutchison	854	577	578	578	588	587	595	584	583	579	576	573
Jackson	455	380	287	269	268	266	260	266	273	276	283	290
Lindsey	854	1,209	1,404	1,548	1,677	1,727	1,748	1,749	1,784	1,770	1,769	1,733
Long	854	558	573	586	590	577	576	558	537	514	496	482
McNeill	854	907	744	739	734	726	734	729	725	723	726	723
Meyer	722	494	504	525	535	568	585	619	652	688	731	755
Morgan	854	1,036	829	931	1,017	1,125	1,220	1,318	1,383	1,422	1,482	1,459
Phelan	811	726	763	803	832	829	855	862	874	870	864	858
Pink	810	455	438	410	400	403	416	420	421	423	429	437
Ray	675	615	644	630	635	626	611	616	615	612	607	610
Smith	628	336	336	339	324	321	323	324	329	334	342	346
Tamarron	854	1,178	1,314	1,433	1,551	1,707	1,845	1,971	2,081	2,178	2,231	2,258
Thomas	854	673	686	721	751	746	741	752	770	793	830	872
Travis	653	408	398	393	398	400	402	405	407	414	415	419
Velasquez	810	503	490	488	467	456	472	471	472	475	476	476
Williams	810	716	713	700	704	701	715	718	718	715	720	727
<b>ELEMENTARY SCHOOL TOTALS</b>	<b>23,285</b>	<b>21,591</b>	<b>22,405</b>	<b>23,200</b>	<b>24,009</b>	<b>24,805</b>	<b>25,736</b>	<b>26,615</b>	<b>27,364</b>	<b>28,013</b>	<b>28,724</b>	<b>29,264</b>
Elementary Absolute Change		844	814	795	809	796	931	879	749	649	711	540
Elementary Percent Change		4.07%	3.77%	3.55%	3.49%	3.32%	3.75%	3.42%	2.81%	2.37%	2.54%	1.88%





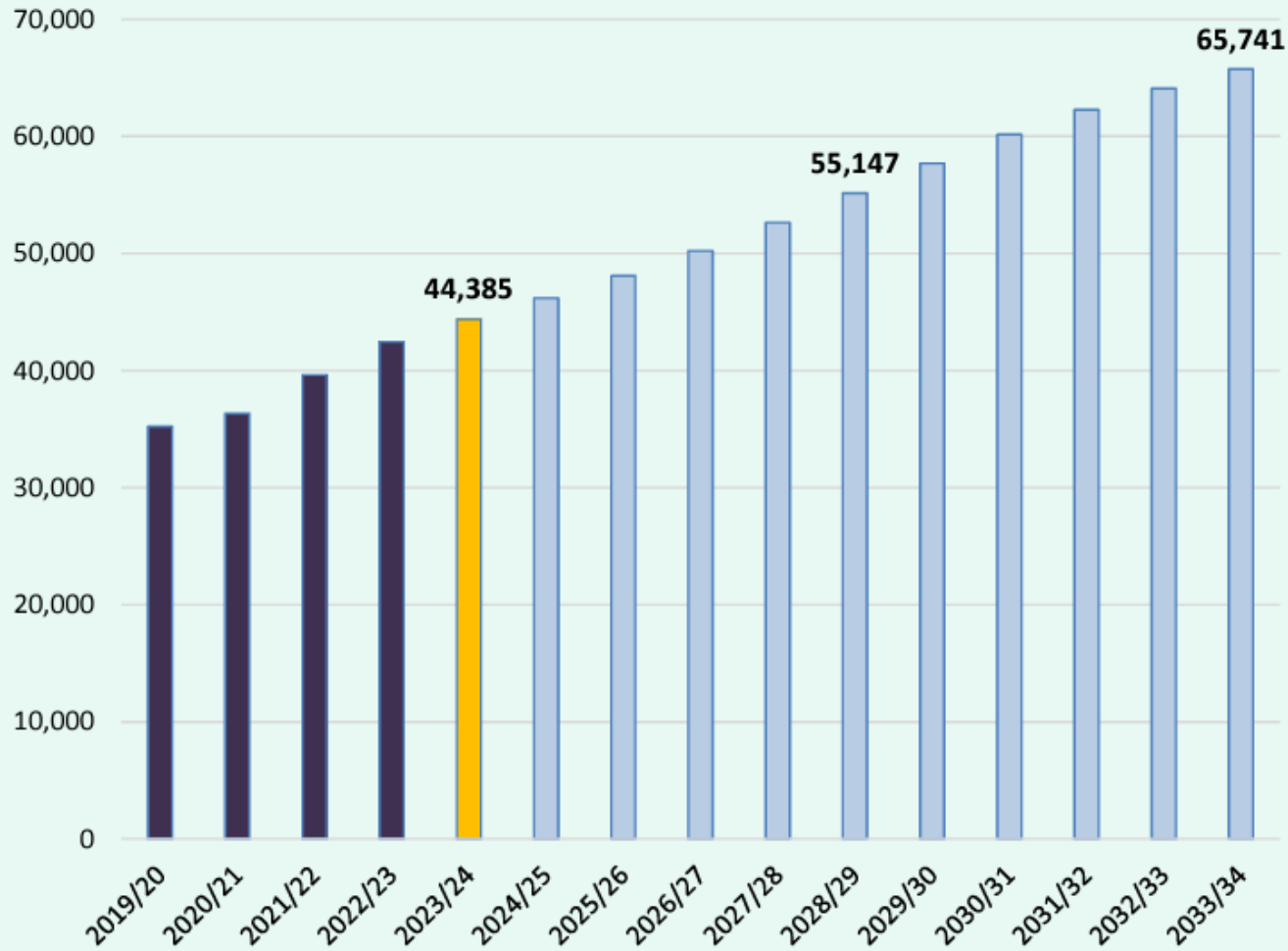
# Ten Year Forecast by Secondary Campus

Campus	Capacity	Fall	ENROLLMENT PROJECTIONS									
		2023/24	2024/25	2025/26	2026/27	2027/28	2028/29	2029/30	2030/31	2031/32	2031/33	2031/34
Navarro 6th Grade Campus		370	347	405	394	447	398	391	400	415	428	439
Roberts 6th Grade Campus		813	1,063	1,253	1,394	1,433	1,586	1,754	1,883	1,962	2,080	2,135
Ryon 6th Grade Campus		525	605	603	576	611	556	576	593	591	604	625
Wertheim 6th Grade Campus		655	658	686	672	737	690	724	739	751	761	758
Wessendorff 6th Grade Campus		450	394	458	433	477	430	452	452	467	465	467
Wright 6th Grade Campus		447	417	447	475	537	506	491	521	547	566	593
<b>6TH GRADE CAMPUS TOTALS</b>	<b>0</b>	<b>3,260</b>	<b>3,484</b>	<b>3,852</b>	<b>3,944</b>	<b>4,242</b>	<b>4,166</b>	<b>4,388</b>	<b>4,588</b>	<b>4,733</b>	<b>4,904</b>	<b>5,017</b>
Middle School Absolute Change		135	224	368	92	298	-76	222	200	145	171	113
Middle School Percent Change		4.32%	6.87%	10.56%	2.39%	7.56%	-1.79%	5.33%	4.56%	3.16%	3.61%	2.30%
Briscoe	1,225	1,303	1,382	1,469	1,488	1,508	1,565	1,585	1,557	1,602	1,632	1,654
George	1,425	789	687	665	710	733	785	787	732	736	757	783
Lamar	1,425	832	857	844	855	890	911	908	882	904	919	932
Dean Leaman	1,225	1,603	1,884	2,267	2,778	3,188	3,419	3,636	4,026	4,343	4,486	4,592
Reading	1,225	1,002	940	1,013	1,102	1,066	1,073	1,058	1,024	1,058	1,072	1,082
Harry Wright		898	972	972	962	1,028	1,120	1,155	1,100	1,113	1,178	1,226
<b>JUNIOR HIGH TOTALS</b>		<b>6,427</b>	<b>6,722</b>	<b>7,230</b>	<b>7,895</b>	<b>8,413</b>	<b>8,873</b>	<b>9,129</b>	<b>9,321</b>	<b>9,756</b>	<b>10,044</b>	<b>10,269</b>
Middle School Absolute Change		124	295	508	665	518	460	256	192	435	288	225
Middle School Percent Change		1.97%	4.59%	7.56%	9.20%	6.56%	5.47%	2.89%	2.10%	4.67%	2.95%	2.24%
Foster	2,075	2,566	2,724	2,798	2,929	3,055	3,178	3,265	3,366	3,402	3,435	3,502
Fulshear	2,075	2,920	3,189	3,535	4,019	4,774	5,706	6,679	7,572	8,323	9,012	9,652
George Ranch	2,075	2,398	2,318	2,198	2,118	2,074	2,128	2,171	2,259	2,209	2,179	2,197
Lamar Cons	1,875	1,775	1,787	1,757	1,752	1,728	1,776	1,794	1,833	1,862	1,859	1,874
Dr Thomas E Randle	2,075	1,787	1,881	1,961	2,065	2,089	2,159	2,220	2,325	2,428	2,387	2,433
BF Terry	1,875	1,531	1,534	1,418	1,359	1,322	1,295	1,304	1,391	1,414	1,405	1,403
<b>HIGH SCHOOL TOTALS</b>	<b>12,050</b>	<b>12,977</b>	<b>13,433</b>	<b>13,667</b>	<b>14,242</b>	<b>15,042</b>	<b>16,242</b>	<b>17,433</b>	<b>18,746</b>	<b>19,638</b>	<b>20,277</b>	<b>21,061</b>
High School Absolute Change		866	456	234	575	800	1,200	1,191	1,313	892	639	784
High School Percent Change		7.15%	3.51%	1.74%	4.21%	5.62%	7.98%	7.33%	7.53%	4.76%	3.25%	3.87%
Alternative Learning Center		78	78	78	78	78	78	78	78	78	78	78
Fort Bend Co Alter		15	15	15	15	15	15	15	15	15	15	15
Juvenile Detention Center		37	37	37	37	37	37	37	37	37	37	37
<b>DISTRICT TOTALS</b>		<b>44,385</b>	<b>46,174</b>	<b>48,079</b>	<b>50,220</b>	<b>52,632</b>	<b>55,147</b>	<b>57,695</b>	<b>60,149</b>	<b>62,270</b>	<b>64,079</b>	<b>65,741</b>
District Absolute Change		1,923	1,789	1,905	2,141	2,412	2,515	2,548	2,454	2,121	1,809	1,662
District Percent Change		4.53%	4.03%	4.13%	4.45%	4.80%	4.78%	4.62%	4.25%	3.53%	2.91%	2.59%



# Key Takeaways

### Total Enrollment



- Lamar CISD added more than 1,900 students this fall, significantly lower than the previous two years totals
- Groundwork is currently underway on roughly 3,440 lots across the district
- The district is forecasted to add 3,700 – 4,200 new homes annually for the next 2-3 years
- The district is forecast to enroll more than 55,100 students in 2028/29, and more than 65,700 students in 2033/34

# Elementary Schools - Rezoning

## New Campuses



### Opening in August 2024

Melton Elementary  
Randle Elementary  
Terrell Elementary

### Opening in August 2025

Elementary School 35  
Elementary School 36

# Lamar CISD Zoning Process

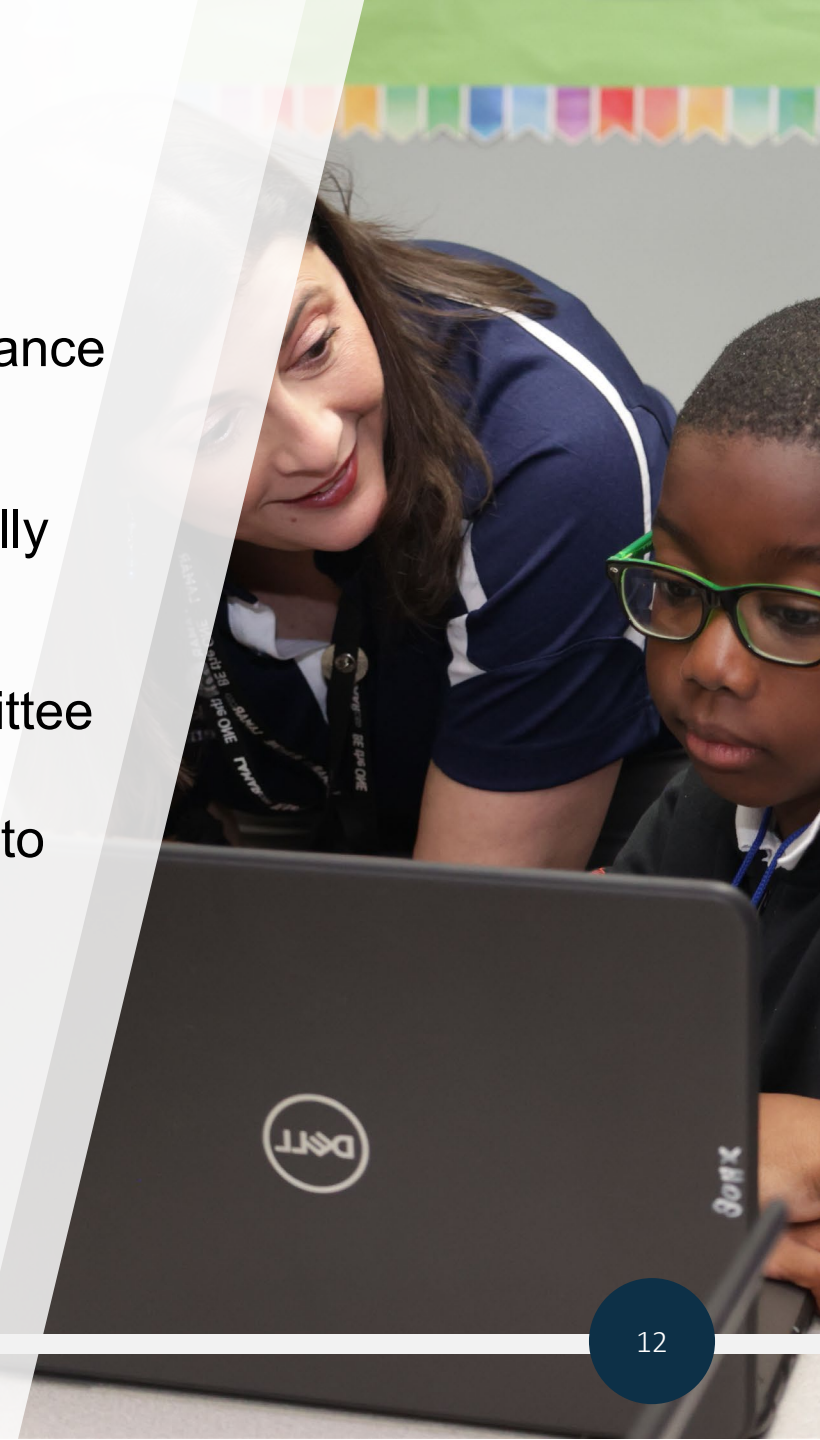
**Step 1:** The district demographers develop multiple options for consideration, which the Board will vet and approve for the Attendance Boundary Committee (ABC) to review and provide feedback on.

**Step 2:** The district will open a survey targeting the areas potentially impacted by rezoning.

**Step 3:** The District will establish an Attendance Boundary Committee (ABC) to review and consider survey results and the options. The committee will rank the options, and the ranking will be presented to the Board of Trustees.

**Step 4:** Administration will present the rankings to the Board for consideration.

**Step 5:** The Board selects and approves zoning plans.



# Lamar CISD Zoning Timeline

- ~~October~~ ~~Cabinet Reviews Attendance Zone Options~~
- ~~November~~ ~~Present Options to Impacted Principals~~
- ~~November 14~~ ~~Board~~ ~~Future Action Item re: Process & Options~~
- ~~December 11~~ ~~Board Workshop: Rezoning & Leveling~~
- ~~December 12~~ ~~Board~~ ~~Future Action Item re: Process & Options~~
- **January** ABC Selection & Notification
- **January 17** Board – Action Item to Determine Options for ABC & Approve Committee
- **January 18 – 31 Community Survey**
- **February 5** ABC Meeting 1 - Melton, Randle, ES 36
- **February 7** ABC Meeting 2 - Melton, Randle, ES 36
- **February 16-23** **Community Survey 2** (if needed)
- **March 19** Board – Action Item to Determine Attendance Zones



# Role of the ABC

- The Attendance Boundary Committee will provide community and parent involvement in redrawing attendance boundaries to accommodate new growth or shifts in our student population.
- Membership of the ABC will consist of at least two representatives from each potentially impacted campus.
- The campus administrator will select campus representatives. Appropriate central administrators will serve as resources as needed.
- Trustees representing the district of the impacted area(s) may appoint up to two people to serve on the ABC *(Should be a parent of a student who is or will be impacted within the next two years)*

# ABC Guidelines

- **Timely Responses:** Aim to respond to emails within a reasonable timeframe, acknowledging receipt and expressing appreciation for the input.
- **Objective and Respectful Tone:** Maintain a neutral and respectful tone in all communications, acknowledging diverse viewpoints and focusing on factual information.
- **Refer to Established Information:** Direct community members to official documentation or factual data whenever possible to support your responses. Any questions that you cannot answer can be submitted to [Info@LCISD.org](mailto:Info@LCISD.org).
- **Refrain from Committing to Decisions:** Avoid making commitments or promises about specific outcomes or decisions. Reiterate that the committee will consider all feedback.
- **Confidentiality and Discretion:** Respect the confidentiality of discussions within the committee and refrain from sharing internal deliberations or sensitive information.
- **Refer Feedback to Committee:** Encourage community members to provide their feedback and be sure that you bring that to the committee.

# Objectives/Criteria

- To develop a fair and objective rezoning process.
- To always keep in mind doing what is in the best interest of students.
- To draw attendance zones in a way that supports an efficient/effective use of school facilities.
- To align the number of students (enrollment) with campus capacity.
- To reduce overcrowding of campuses.
- To plan for future growth.
- To keep neighborhoods and feeder schools together, as much as possible.
- To minimize rezoning neighborhoods that have been affected in previous rezonings.
- To draw secondary zones that reflect the district's diversity, as much as possible.
- To consider elementary students' proximity to a campus, being mindful of traffic patterns that allow for the safest routes available.
- To communicate zoning information effectively to all students and families who may be impacted.



# Melton, Randle and ES #36 Rezoning Projections

Campus	Max Building Capacity	Max Portable Capacity	Max Total Capacity	2023-24	2024-25	2025-26	2026-27	2027-28
<b>Elementary Schools Option 1</b>								
Huggins Elementary	585	315	900	781	862	753	751	801
Lindsey Elementary	854	352	1,206	1,204	856	874	893	870
Tamarron Elementary	854	352	1,206	1,173	1,103	900	891	899
Melton Elementary (Opens 2024)	854	0	854		536	661	770	895
Randle Elementary (Opens 2024)	854	0	854		513	614	639	688
Elementary #36 (Opens 2025)	854	0	854			489	743	835

<b>Elementary Schools Option 2</b>								
Huggins Elementary	585	315	900	781	862	767	820	924
Lindsey Elementary	854	352	1206	1,204	856	874	893	870
Tamarron Elementary	854	352	1206	1,173	1,164	836	842	878
Melton Elementary (Opens 2024)	854	0	854		536	661	755	849
Randle Elementary (Opens 2024)	854	0	854		448	516	541	590
Elementary #36 (Opens 2025)	854	0	854			644	844	1,044

<b>Elementary Schools Option 3</b>								
Huggins Elementary	585	315	900	781	808	697	698	750
Lindsey Elementary	854	352	1206	1,204	856	874	893	870
Tamarron Elementary	854	352	1206	1,173	1,103	900	891	899
Melton Elementary (Opens 2024)	854	0	854		536	622	684	762
Randle Elementary (Opens 2024)	854	0	854		558	670	695	744
Elementary #36 (Opens 2025)	854	0	854			522	823	1,124

<b>2023 Elementary Schools - without opening</b>								
Huggins Elementary	585	315	900	781	1,215	1,347	1,474	1,681
Lindsey Elementary	854	352	1206	1,204	1,405	1,547	1,678	1,726
Tamarron Elementary	854	352	1206	1,173	1,314	1,434	1,549	1,707
Melton Elementary (Opens 2024)	854	0	854					
Randle Elementary (Opens 2024)	854	0	854					
Elementary #36 (Opens 2025)	854	0	854					

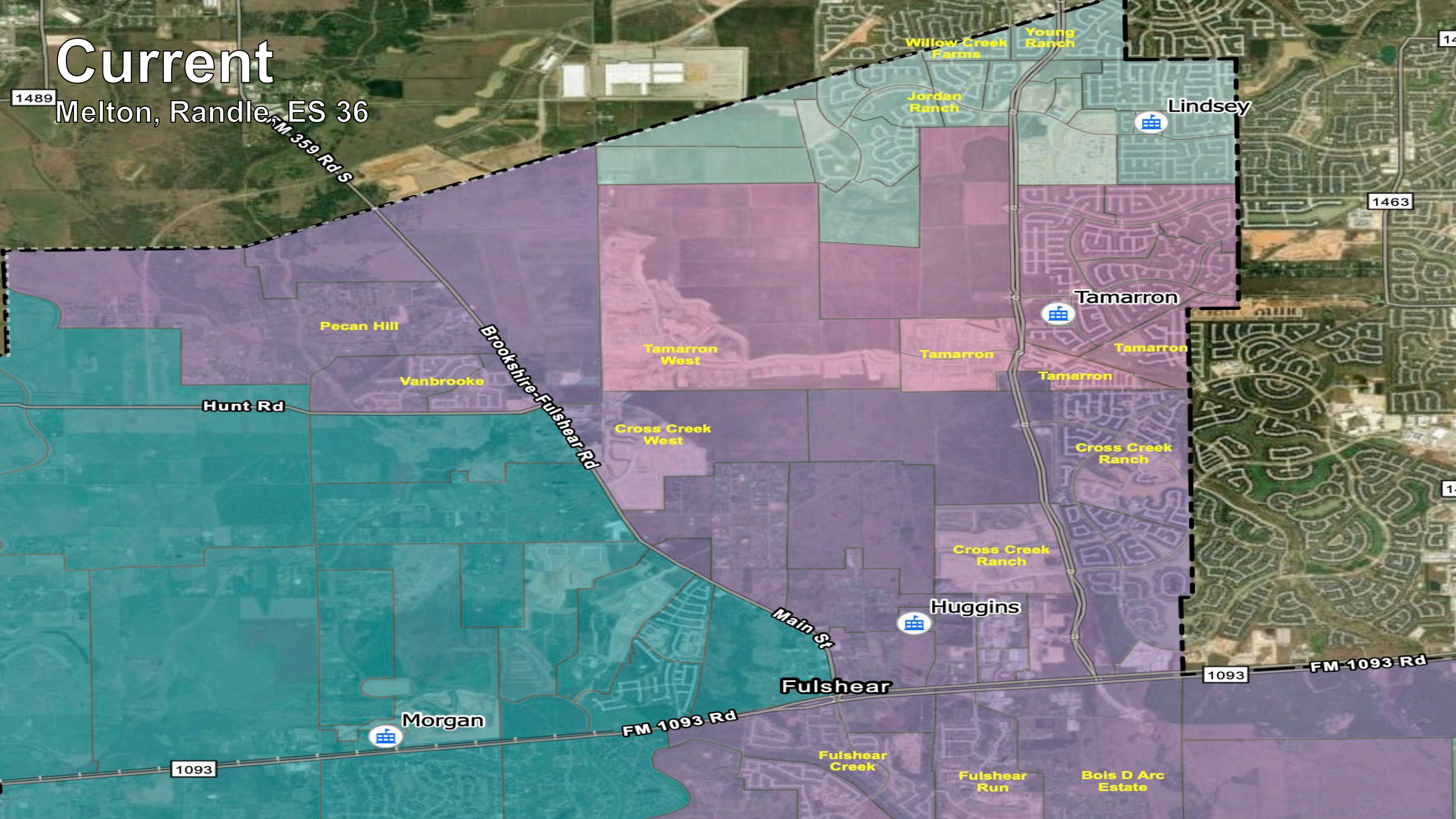
\*\*Elementary #36 Opens in Fall of 2025

*\*Data points are projections and therefore represent estimated enrollment*

- **Red** = Over total capacity...Decision needed
- **Orange** = Over building capacity...Using portables
- **Blue** = Enrollment is 70% or less than building capacity...Decision needed

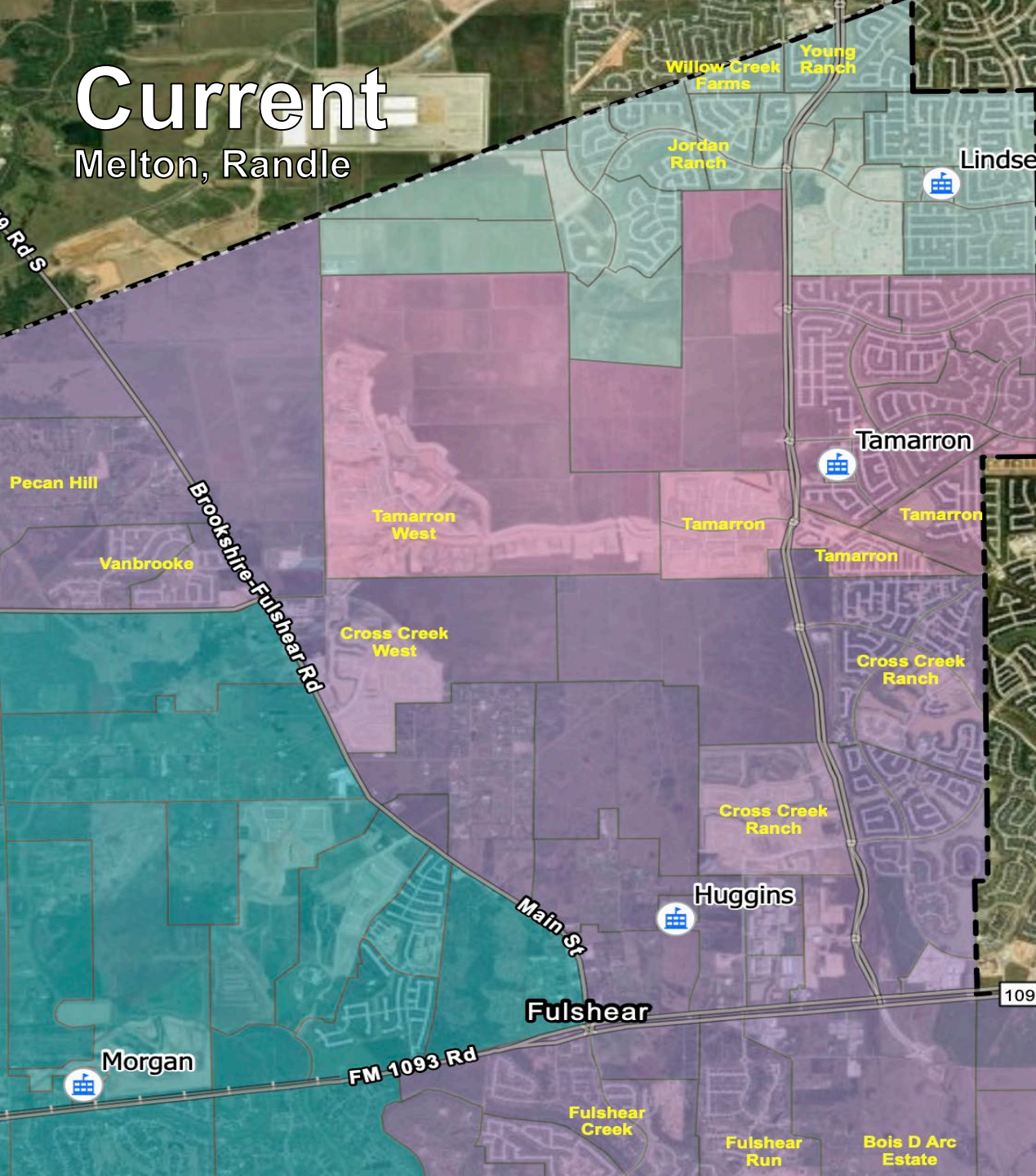
# Current

Melton, Randle, ES 36



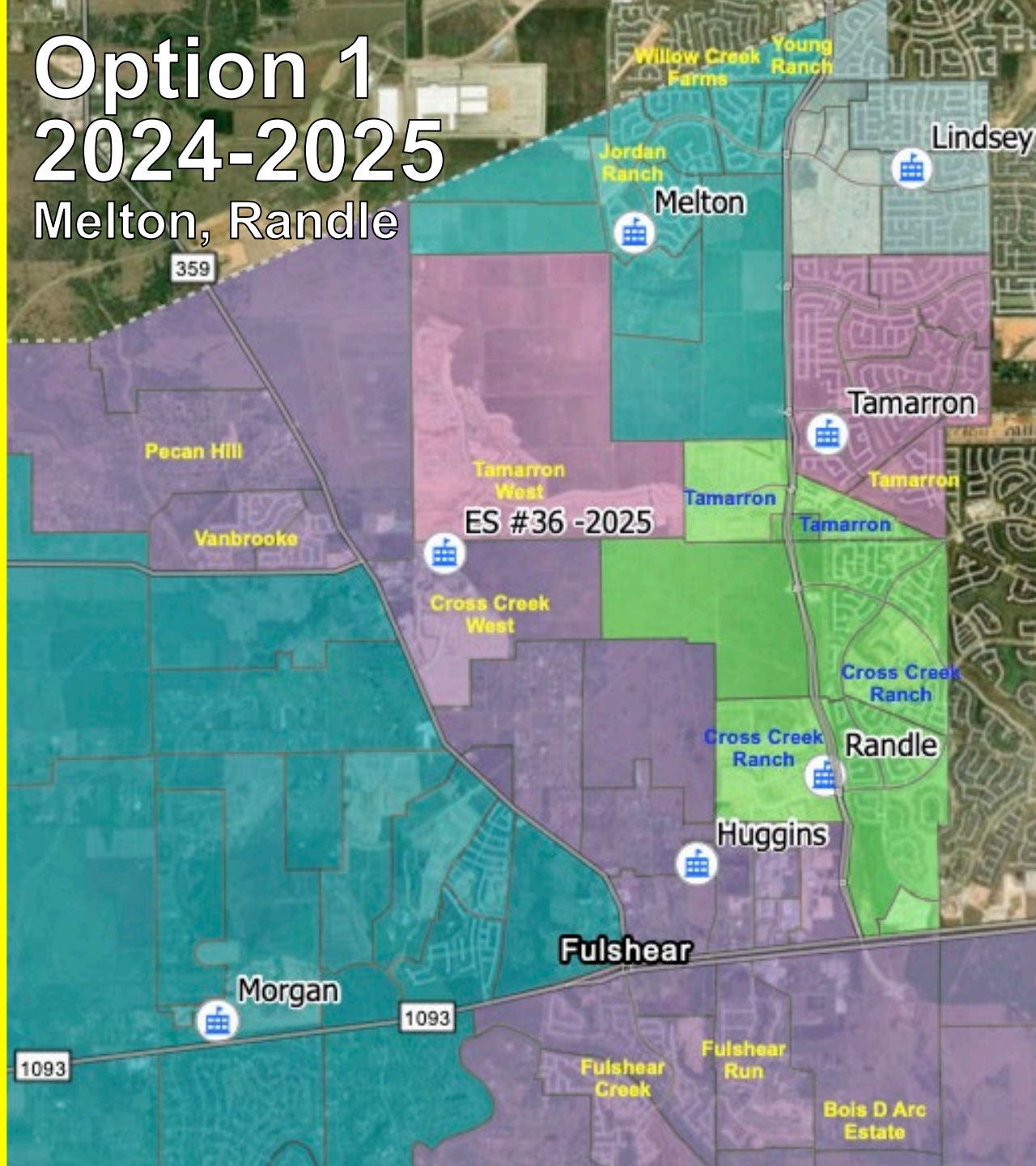
# Current

Melton, Randle

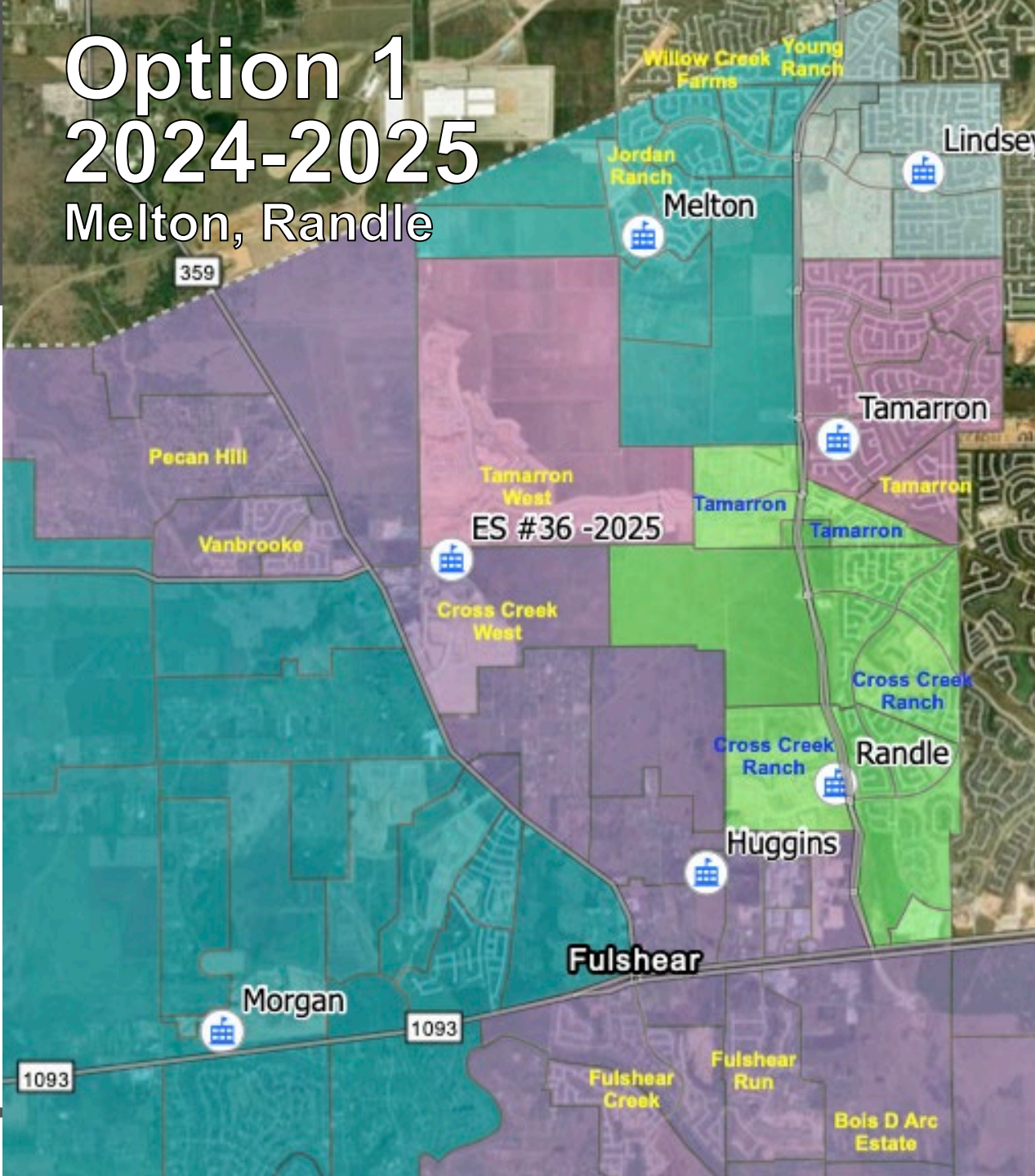


# Option 1 2024-2025

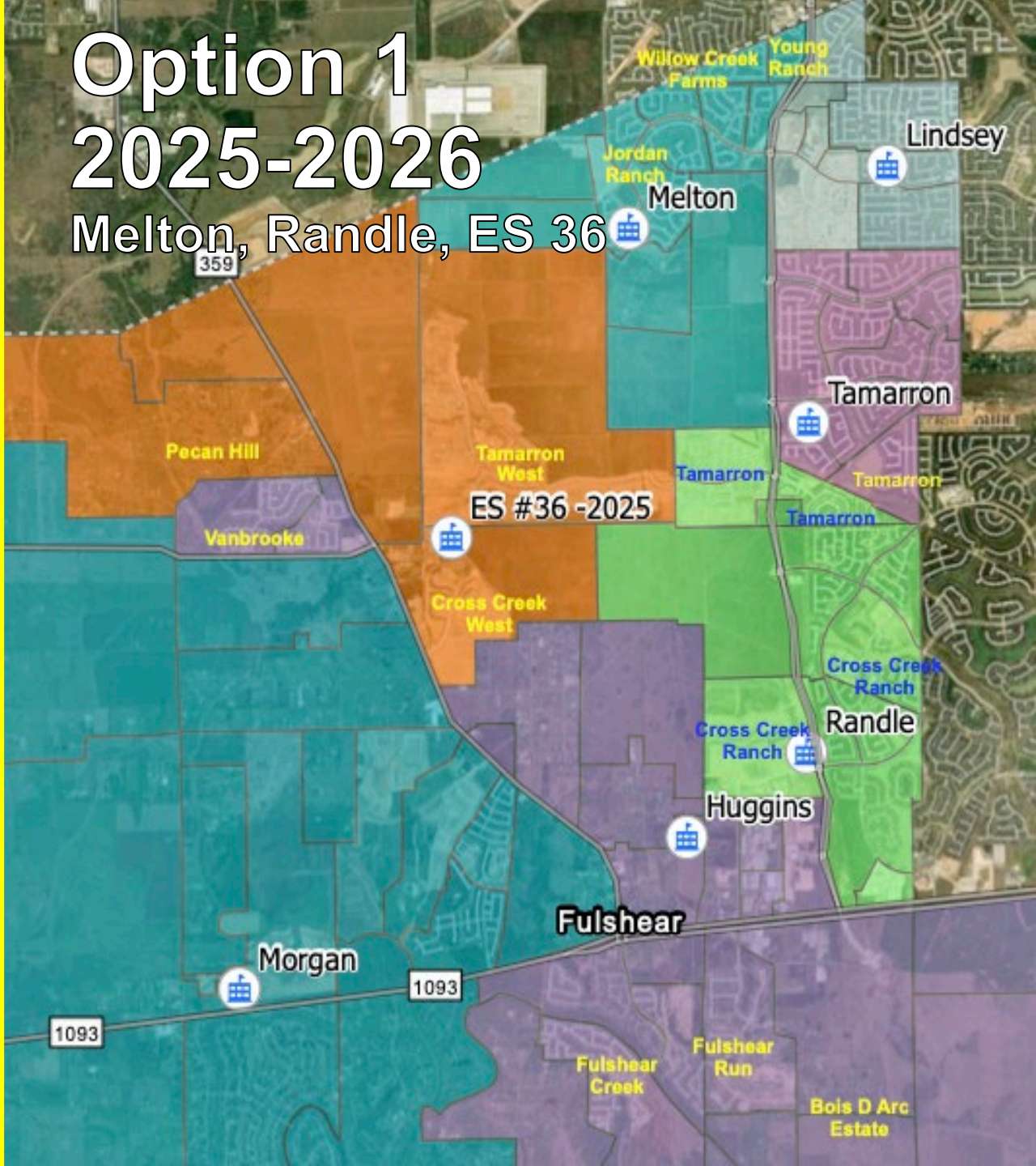
Melton, Randle



# Option 1 2024-2025 Melton, Randle

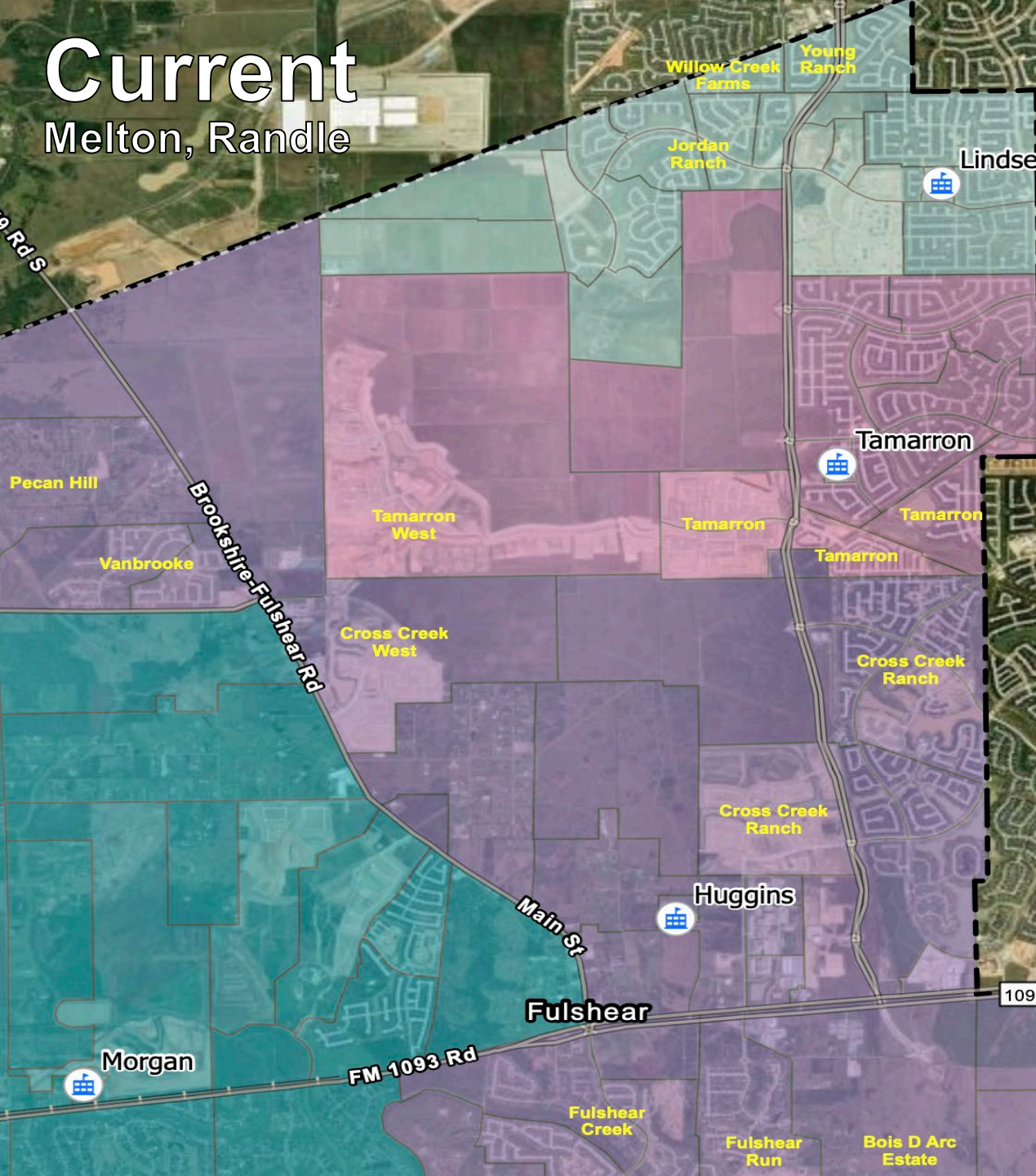


# Option 1 2025-2026 Melton, Randle, ES 36



# Current

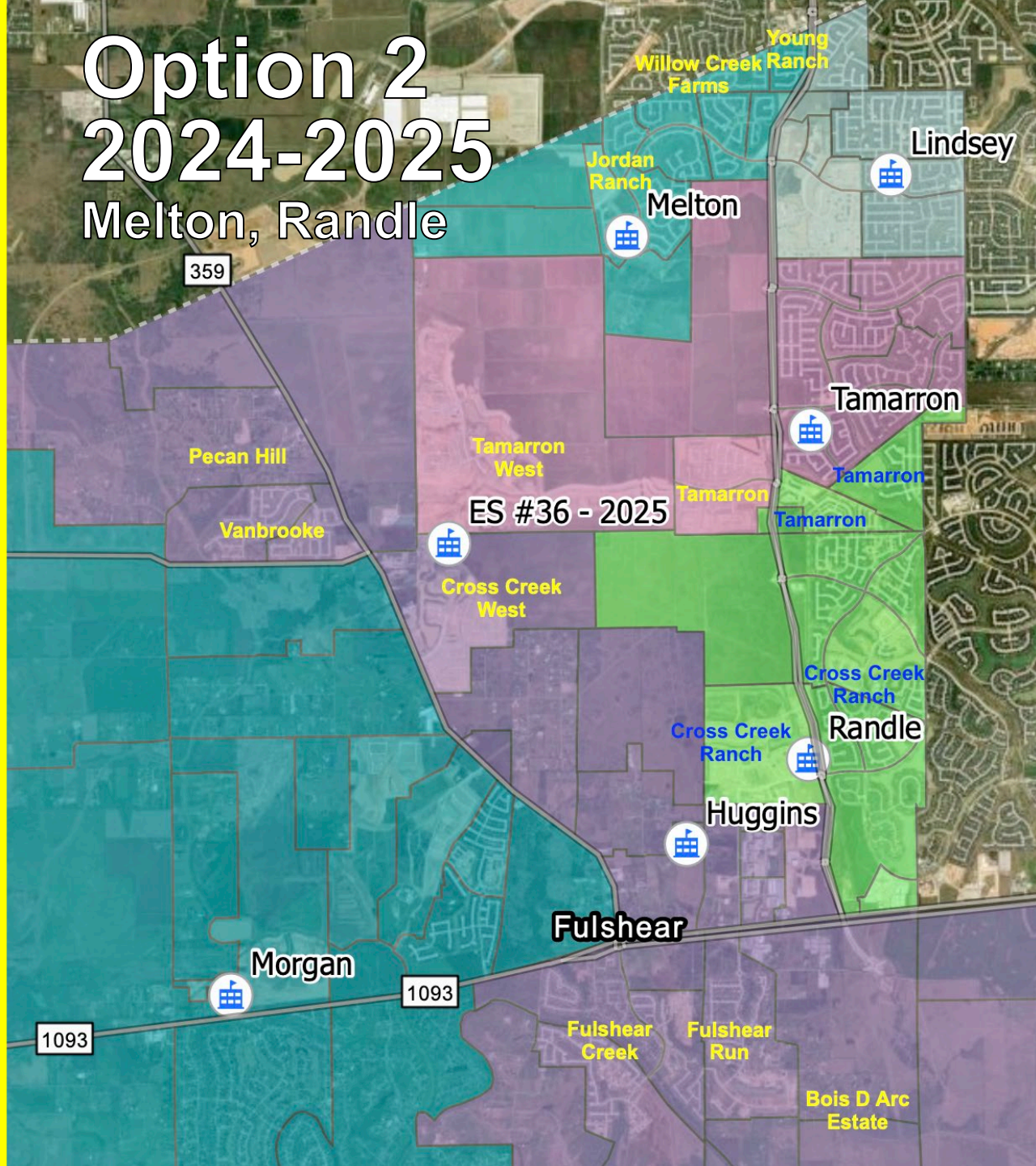
Melton, Randle



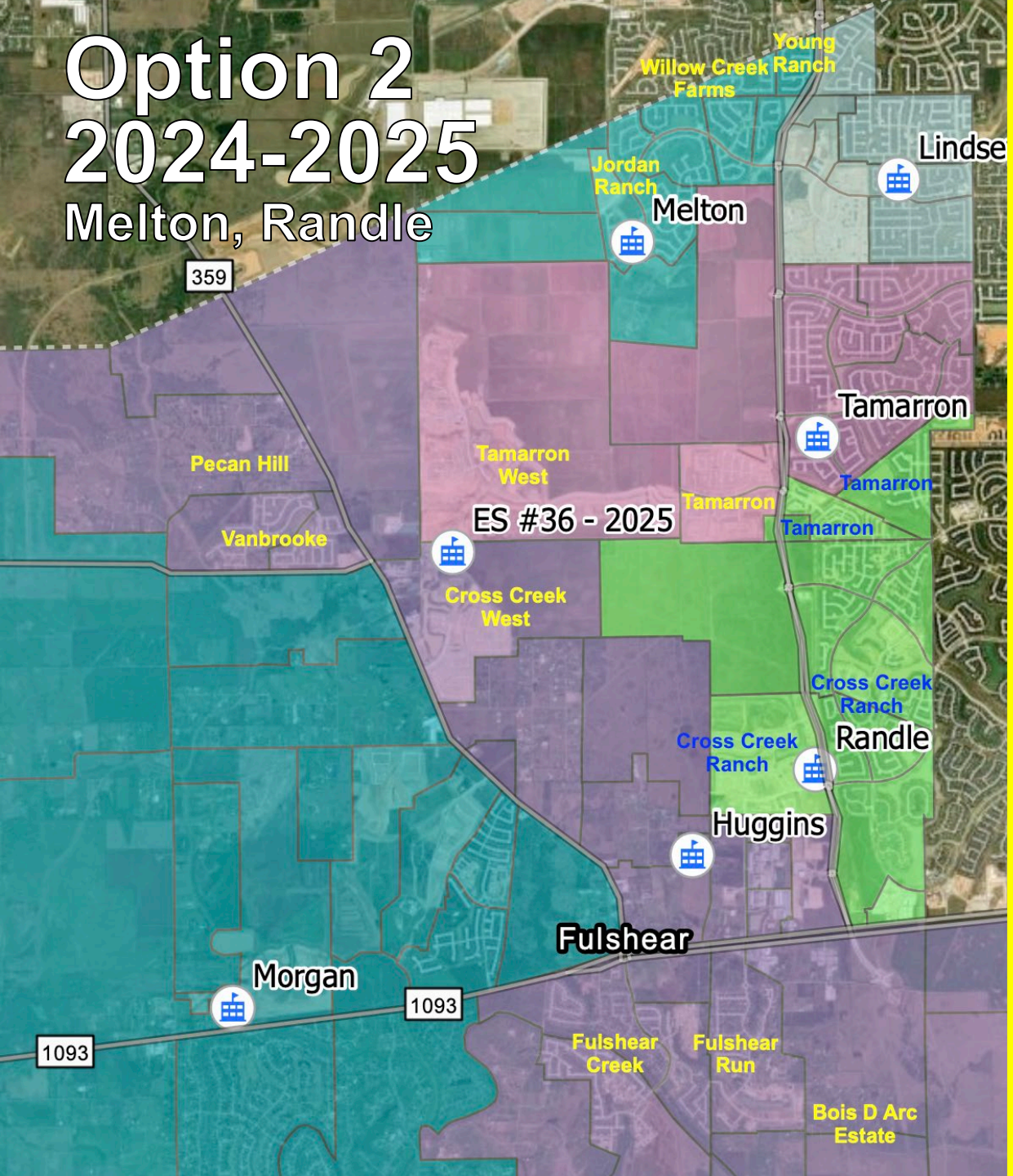
# Option 2

## 2024-2025

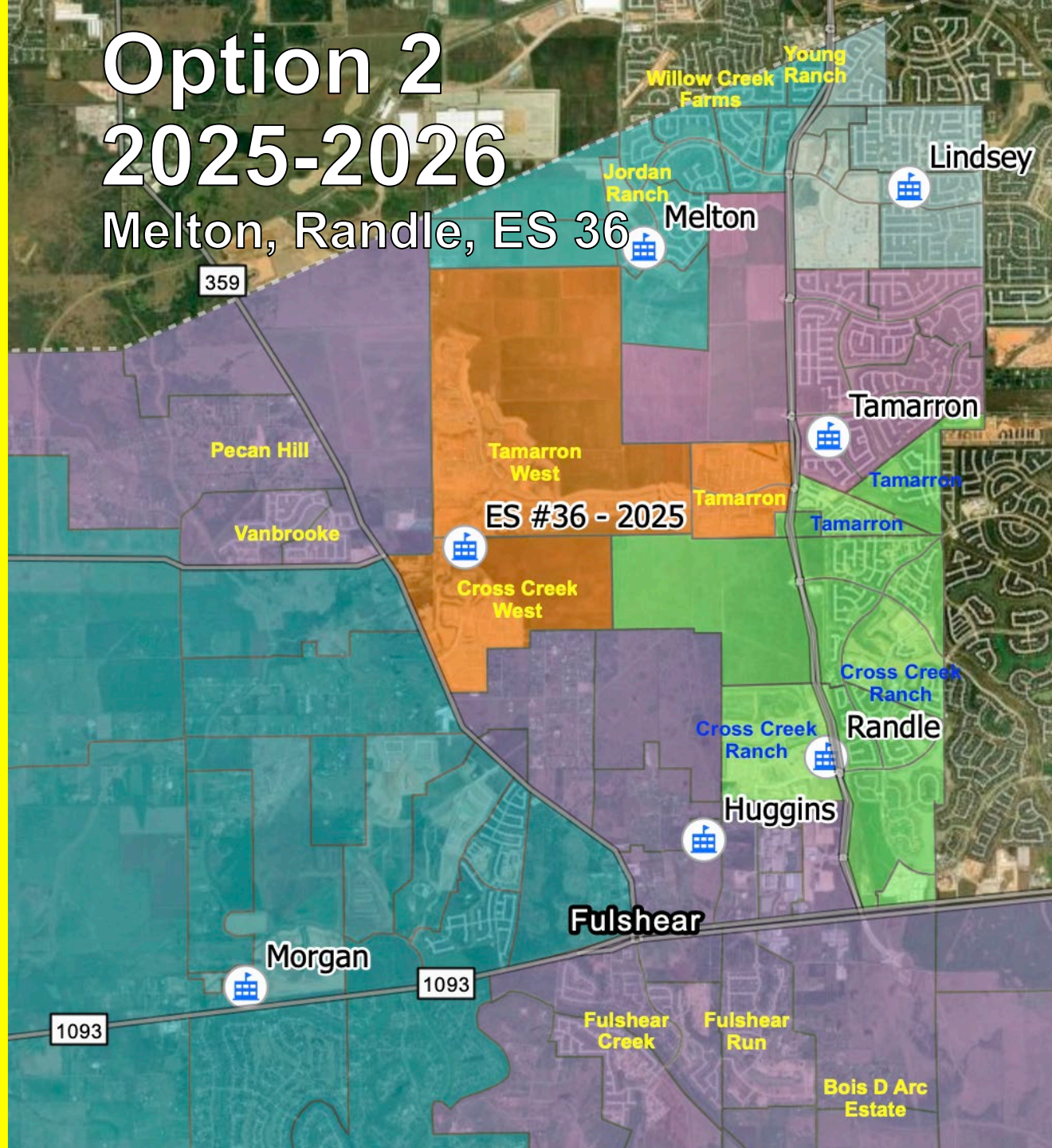
Melton, Randle



# Option 2 2024-2025 Melton, Randle

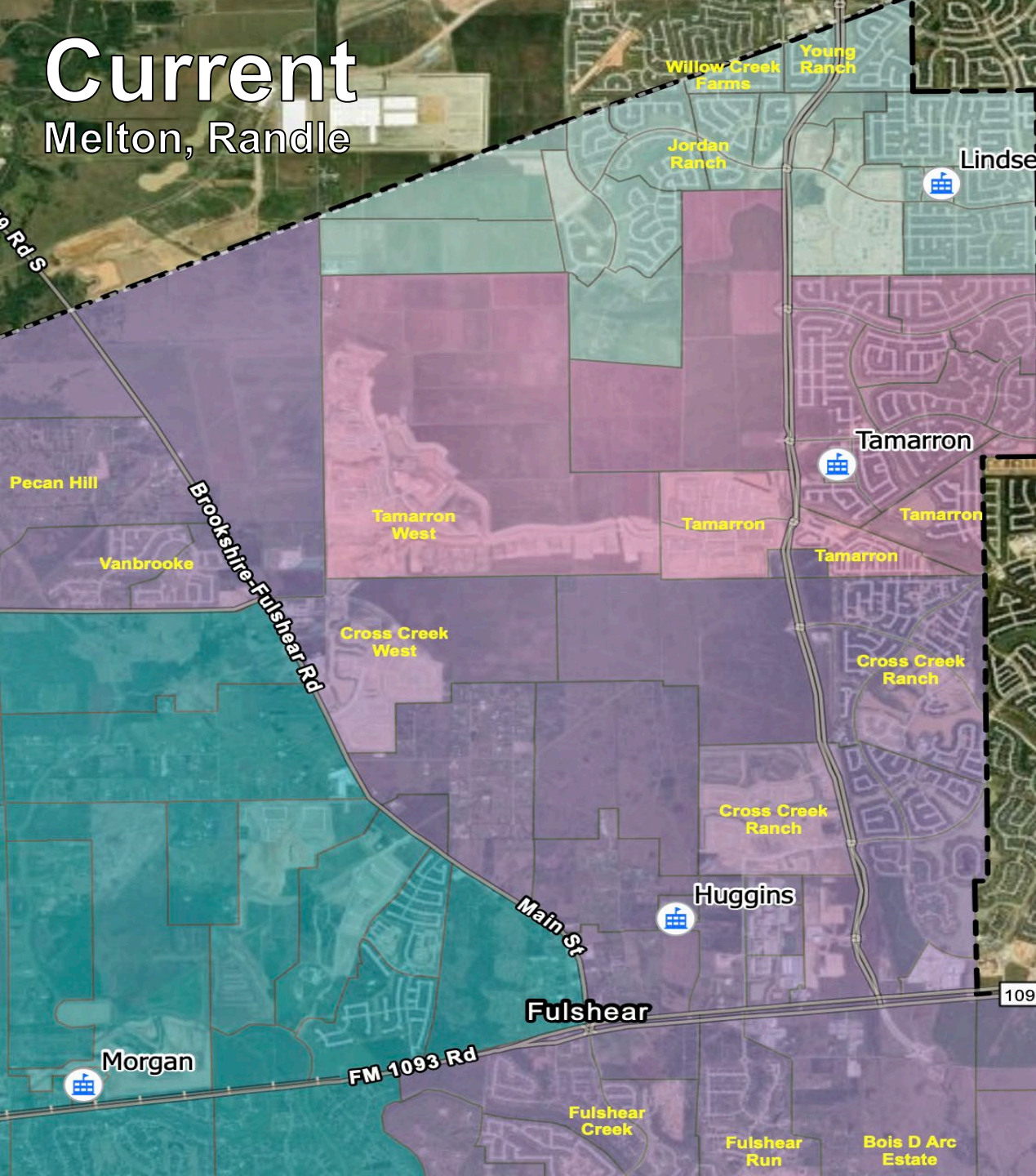


# Option 2 2025-2026 Melton, Randle, ES 36



# Current

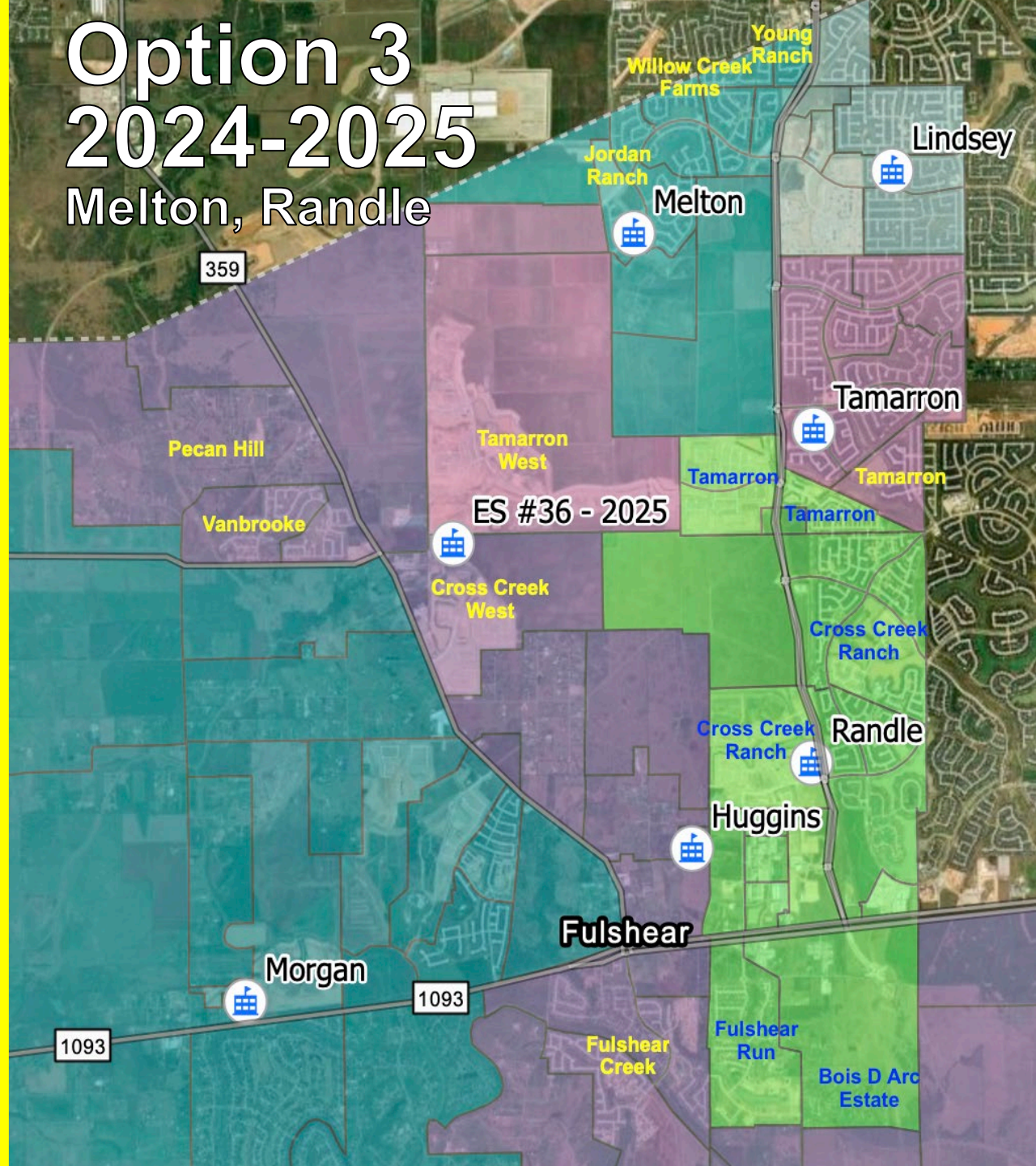
Melton, Randle



# Option 3

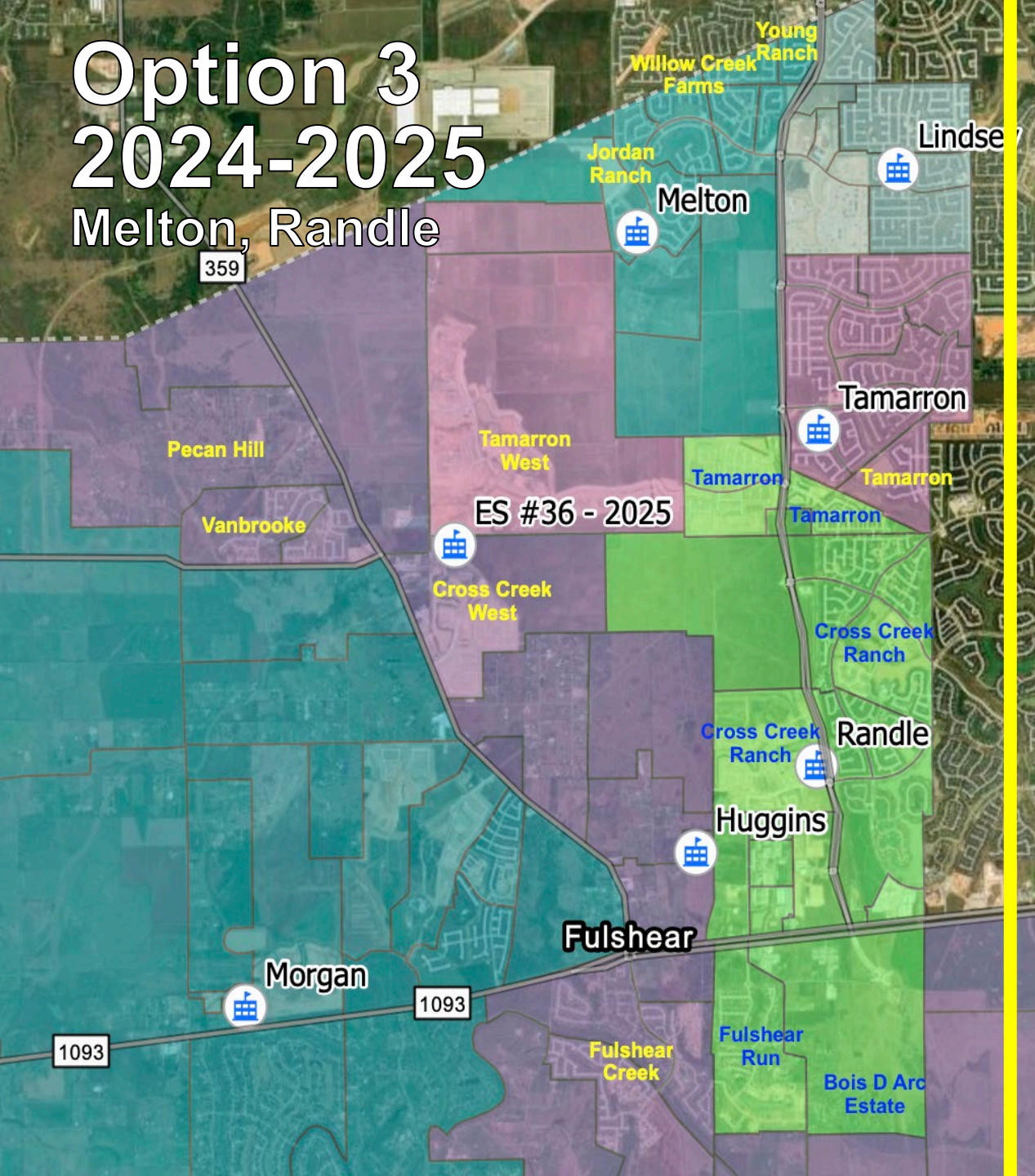
## 2024-2025

Melton, Randle



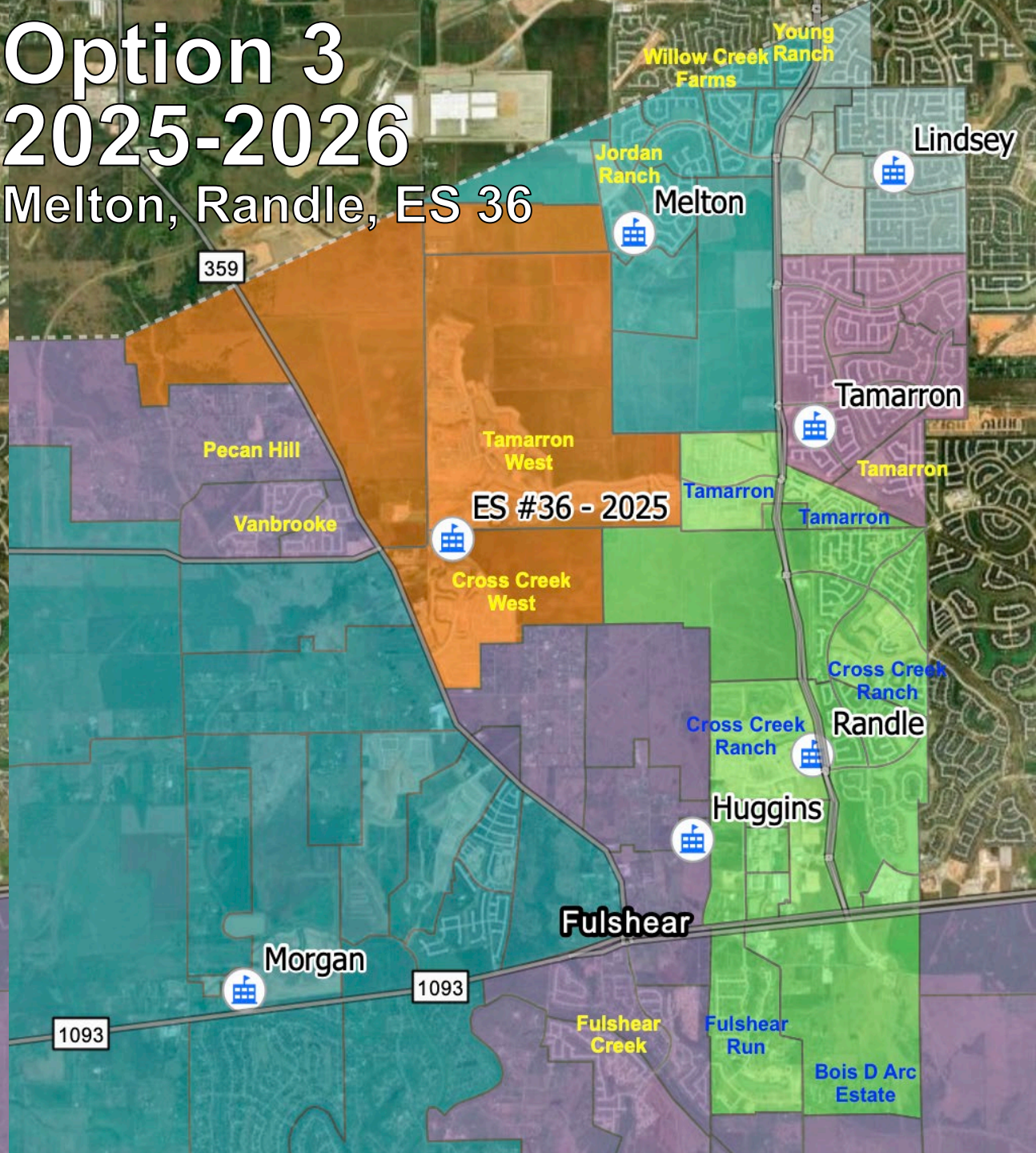
# Option 3 2024-2025

Melton, Randle



# Option 3 2025-2026

Melton, Randle, ES 36





# Survey Results

- **Sent to 4,402 e-mail addresses**
  - Send via direct e-mail
  - Placed in campus newsletters
  - Backpack flyers
- **Received 1,071 responses**
  - Huggins – 339 (32%)
  - Lindsey – 389 (37%)
  - Tamarron – 242 (23%)
  - Morgan – 101 (10%)

# Survey Results – 2024/2025



After reviewing the options, please rank each rezoning option in order of the zone that best balances enrollment across schools to least balances enrollment across schools.

Responses	Rank			Weighted Score	Relative Weighted Score	Overall Rank
	Rank 1	Rank 2	Rank 3			
Option 1	565	283	168	2429	100	1
Option 2	261	451	304	1989	82	2
Option 3	190	282	544	1678	69	3
<b>Total Responses</b>						<b>1,016</b>

# Survey Results – 2024/2025

Which zoning option do you prefer?

Responses	Count	%
I prefer Zone Option 1.	595	57%
I prefer Zone Option 2.	266	26%
I prefer Zone Option 3.	180	17%
<b>Total Responses</b>	<b>1,041</b>	

# Survey Results – 2025/2026

 After reviewing the options, please rank each rezoning option in order of the zone that best balances enrollment across schools to least balances enrollment across schools.

Responses	Rank			Weighted Score	Relative Weighted Score	Overall Rank
	Rank 1	Rank 2	Rank 3			
Option 1	538	251	155	2271	100	1
Option 2	250	398	296	1842	81	2
Option 3	156	295	493	1551	68	3
<b>Total Responses</b>						<b>944</b>

# Survey Results – 2025/2026

Which zoning option do you prefer?

Responses	Count	%
I prefer Zone Option 1.	557	58%
I prefer Zone Option 2.	263	27%
I prefer Zone Option 3.	148	15%
<b>Total Responses</b>	<b>968</b>	

# Reviewing the Options

Considering the survey results and our discussion this evening, as a committee, would you like to create a fourth option during the next meeting?

# Next steps

- Consider options...do we need to create an Option 4?
- Rank the options

**Next meeting:  
February 7, 2024  
6:00 PM**



# Contact Info

Info@LCISD.org

832.223.0330

