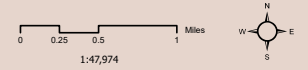
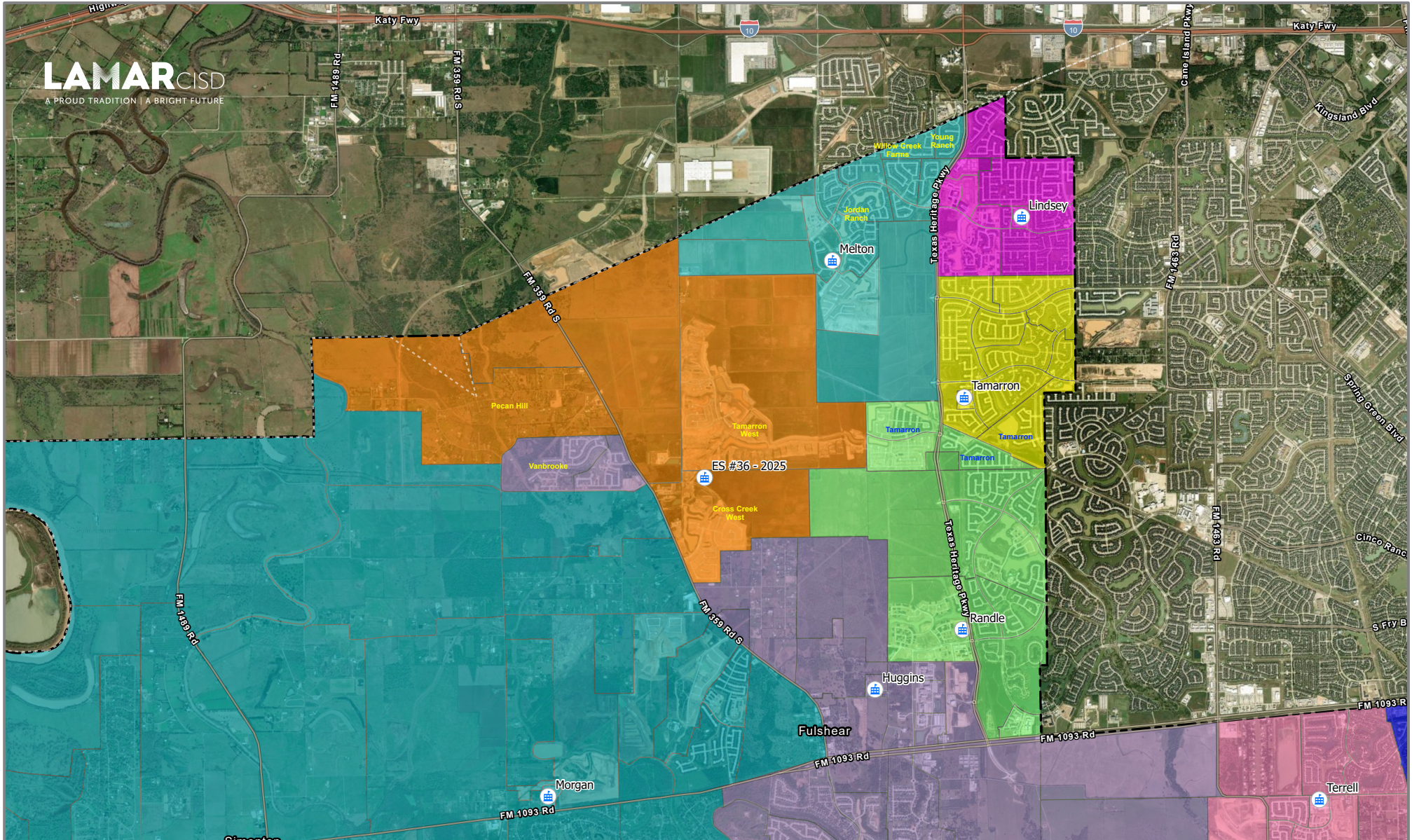


Board Approved Attendance Zones: Melton ES & Randle ES

In effect as of the 2024-2025 School Year

Approved by the Lamar CISD Board of Trustees on March 19, 2024





Board Approved Attendance Zones: ES 36
In effect as of the 2025-2026 School Year

Approved by the Lamar CISD Board of Trustees on March 19, 2024

