

Central Projections

Campus	Max Building Capacity	Max Portable Capacity	Max Total Capacity	2023-24	2024-25	2025-26	2026-27	2027-28
Elementary Schools Option 1								
Austin Elementary	625	88	713	569	462	460	457	454
Frost Elementary	854	264	1,118	1,075	829	821	819	809
Jackson Elementary	455	0	455	401	319	326	353	378
Long Elementary	854	0	854	560	424	432	432	423
Pink Elementary	810	66	876	460	484	447	434	437
Smith Elementary	628	0	628	338	606	608	588	566
Travis Elementary	653	132	785	415	542	535	538	537

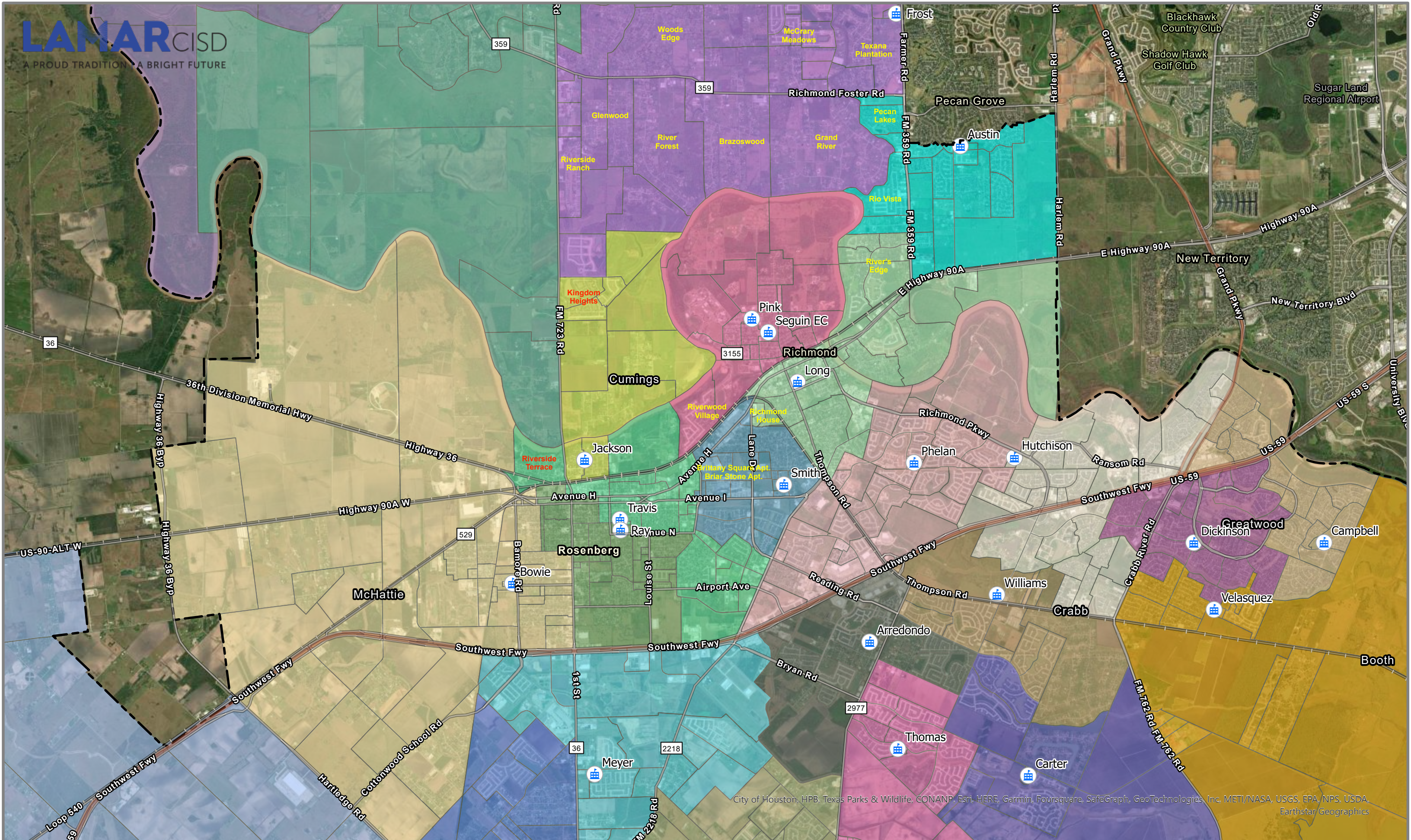
Elementary Schools Option 2								
Austin Elementary	625	88	713	569	462	460	457	454
Frost Elementary	854	264	1,118	1,075	829	821	819	809
Jackson Elementary	455	0	455	401	319	326	353	378
Long Elementary	854	0	854	560	512	525	525	512
Pink Elementary	810	66	876	460	475	440	428	431
Smith Elementary	628	0	628	338	549	551	533	515
Travis Elementary	653	132	785	415	542	535	538	537

REJECTED				Elementary Schools Option 3				
Austin Elementary	625	88	713	569	678	677	670	666
Frost Elementary	854	264	1,118	1,075	839	874	911	928
Jackson Elementary	455	0	455	401	268	253	251	251
Long Elementary	854	0	854	560	703	715	719	704
Pink Elementary	810	66	876	460	436	410	401	403
Smith Elementary	628	0	628	338	336	336	324	321
Travis Elementary	653	132	785	415	427	424	429	432

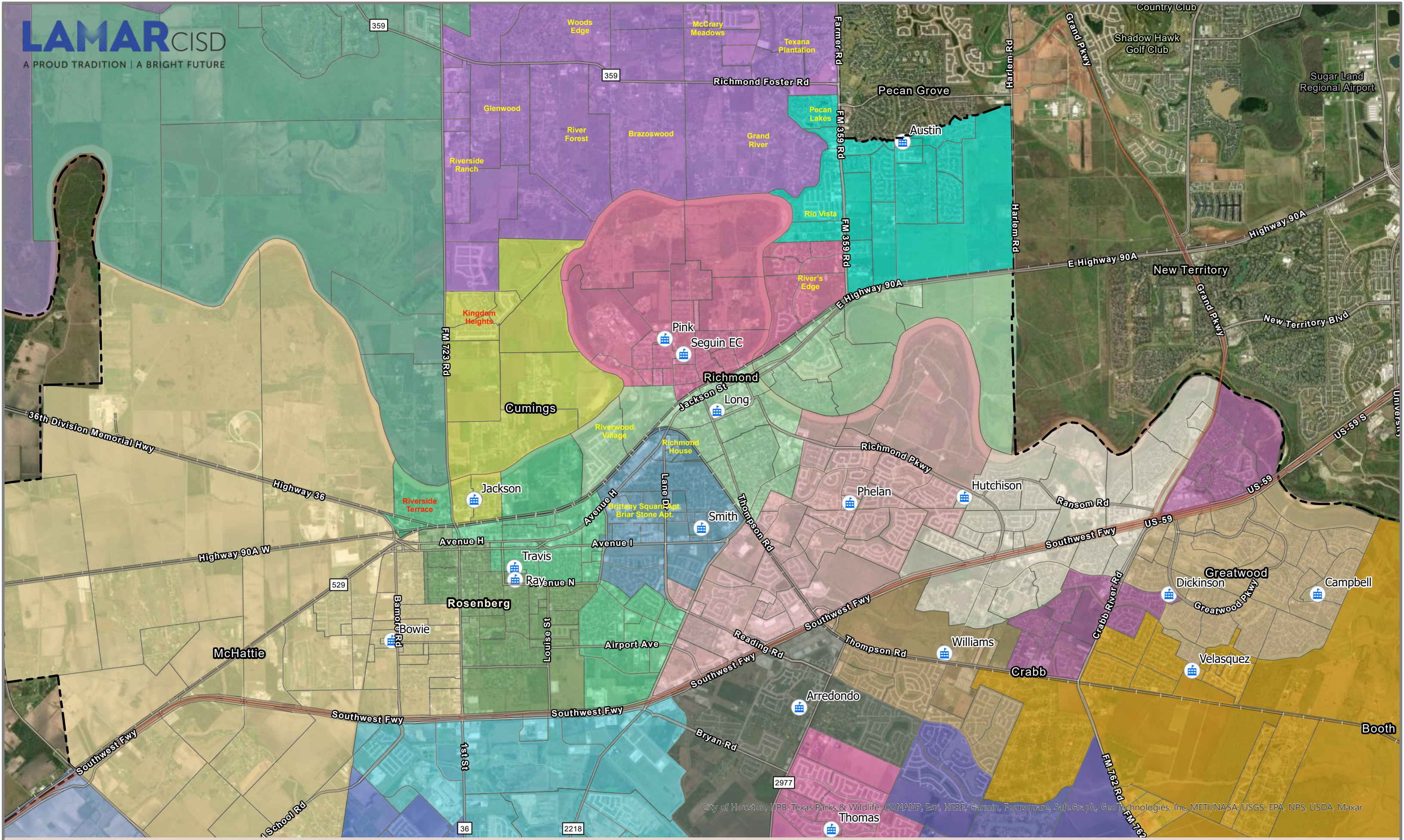
Elementary Schools Option 4								
Austin Elementary	625	88	713	569	559	557	553	550
Frost Elementary	854	264	1,118	1,075	780	777	776	767
Jackson Elementary	455	0	455	401	392	377	385	390
Long Elementary	854	0	854	560	435	445	450	440
Pink Elementary	810	66	876	460	477	444	432	436
Smith Elementary	628	0	628	338	336	336	324	321
Travis Elementary	653	132	785	415	547	549	562	566

2023 Elementary Schools - without leveling								
Austin Elementary	625	88	713	569	559	557	553	550
Frost Elementary	854	264	1,118	1,075	1,089	1,123	1,156	1,173
Jackson Elementary	455	0	455	401	287	270	268	267
Long Elementary	854	0	854	560	572	585	590	576
Pink Elementary	810	66	876	460	436	410	401	403
Smith Elementary	628	0	628	338	336	336	324	320
Travis Elementary	653	132	785	415	399	394	398	400

- **Red** = Over total capacity...Decision needed
- **Orange** = Over building capacity...Using portables
- **Blue** = Enrollment is 70% or less than building capacity...Decision needed

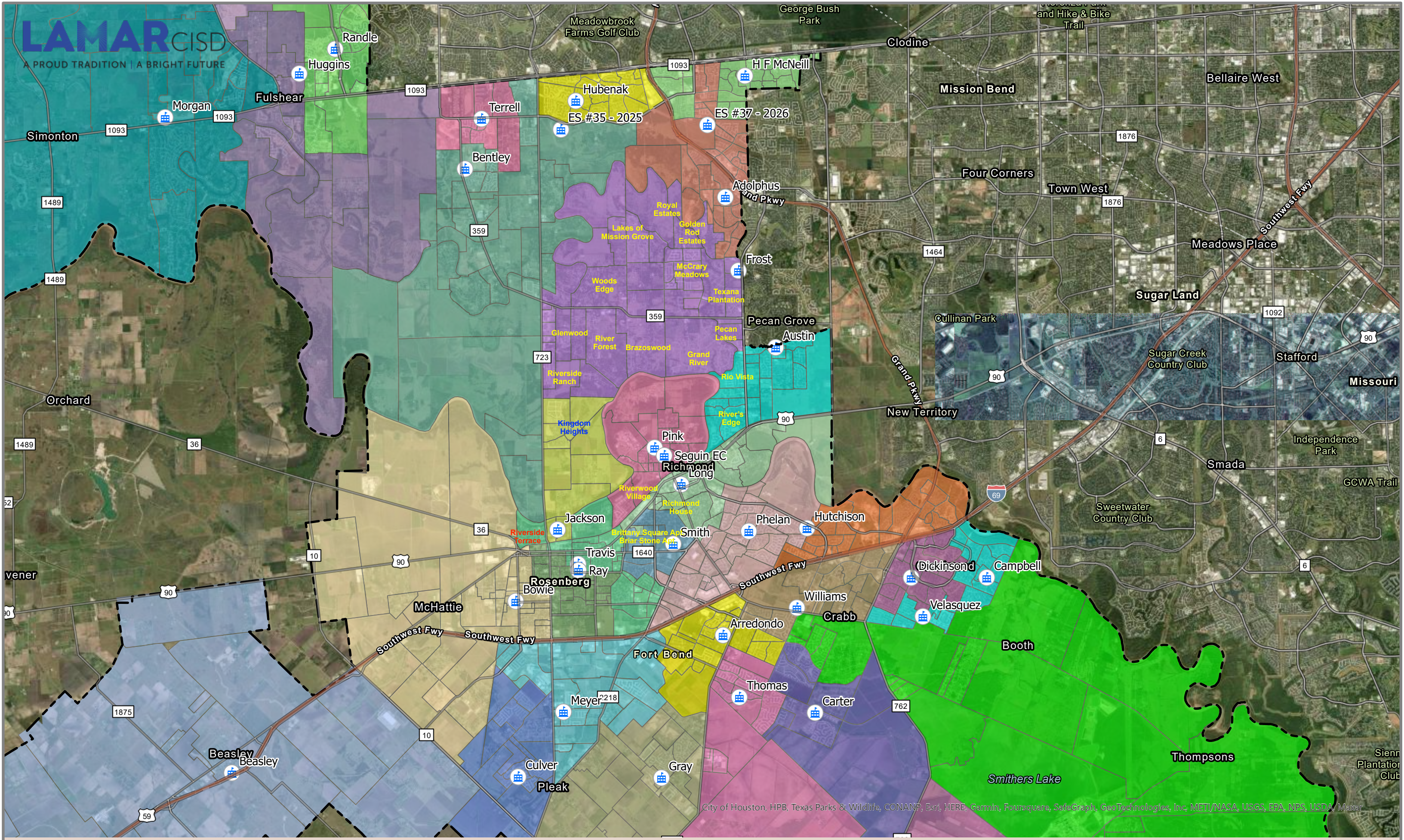


City of Houston, HPB, Texas Parks & Wildlife, CONANP, Esri, HERE, Garmin, Foursquare, SafeGraph, GeoTechnologies, Inc. METI/NASA, USGS, EPA, NPS, USDA, Earthstar Geographics



City of Houston, HPB, Texas Parks & Wildlife, CONANP, Esri, HERE, Garmin, Foursquare, SafeGraph, GeoTechnologies, Inc, METI/NASA, USGS, EPA, NPS, USDA, Maxar





City of Houston, HPB, Texas Parks & Wildlife, CONANP, Esri, HERE, Garmin, Foursquare, SafeGraph, GeoTechnologies, Inc, METI/NASA, USGS, EPA, NPS, USDA, Maxar