

THE

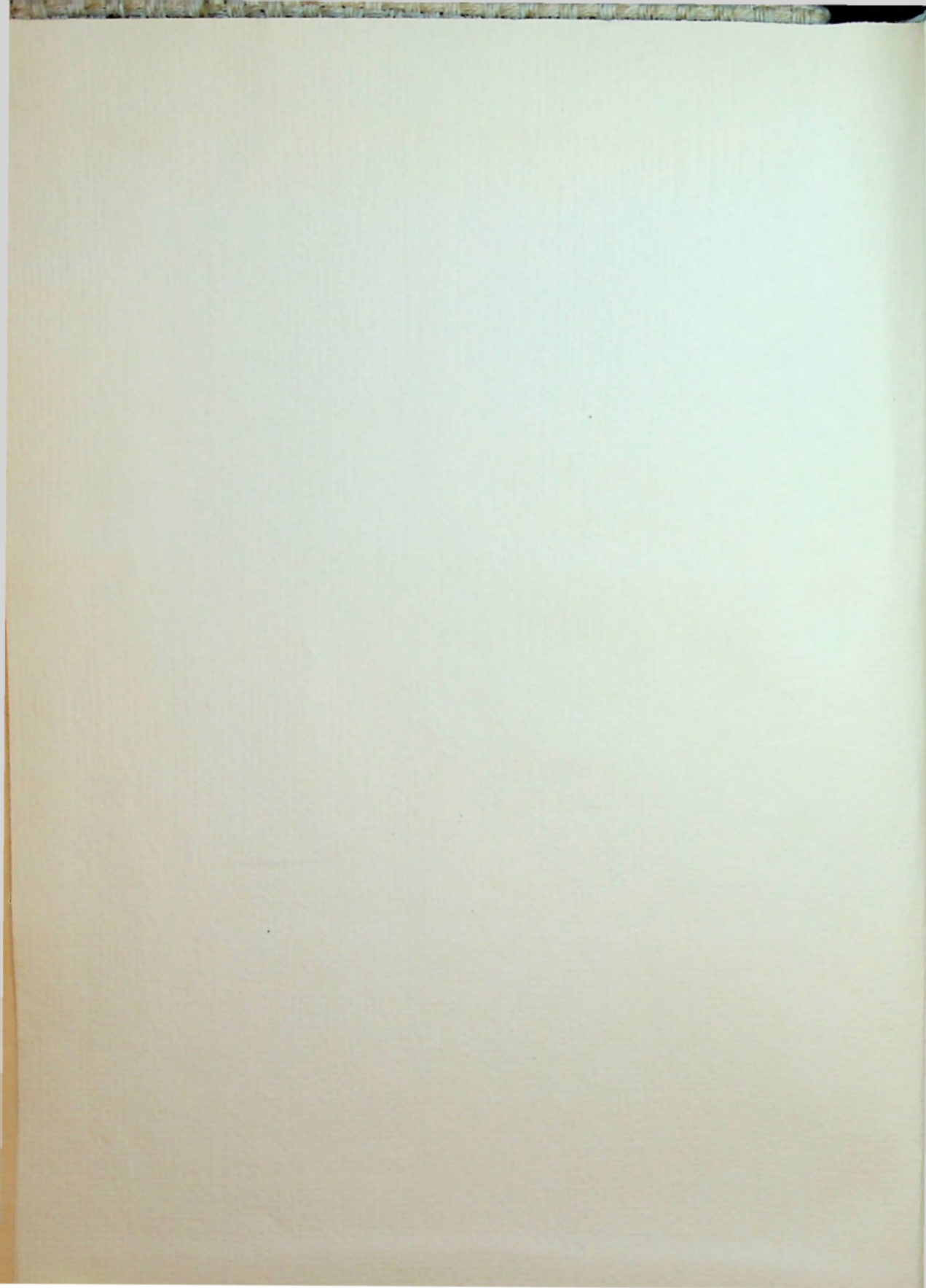
VIKING

1 9 3 4



Bernice M. Newbecker







THE  
VIKING

PUBLISHED ANNUALLY  
by the  
SENIOR CLASS  
of  
KINGSBURG HIGH SCHOOL  
Kingsburg, California

1 9 3 4

KINGSBURG JOINT UNION  
HIGH SCHOOL LIBRARY



# C O N T E N T S

I.

*THE SCHOOL*

II.

*ORGANIZATIONS*

III.

*ACTIVITIES*

IV.

*ATHLETICS*

V.

*BREATH OF LIFE*



# DEDICATION

*To the Spirit*

*of the*

GREEN AND THE GOLD

• • • • •

• • • • •

• • • • •

• •

•



7  
THE SCHOOL

---





*There are days in our mem'ry  
We love and revere,*



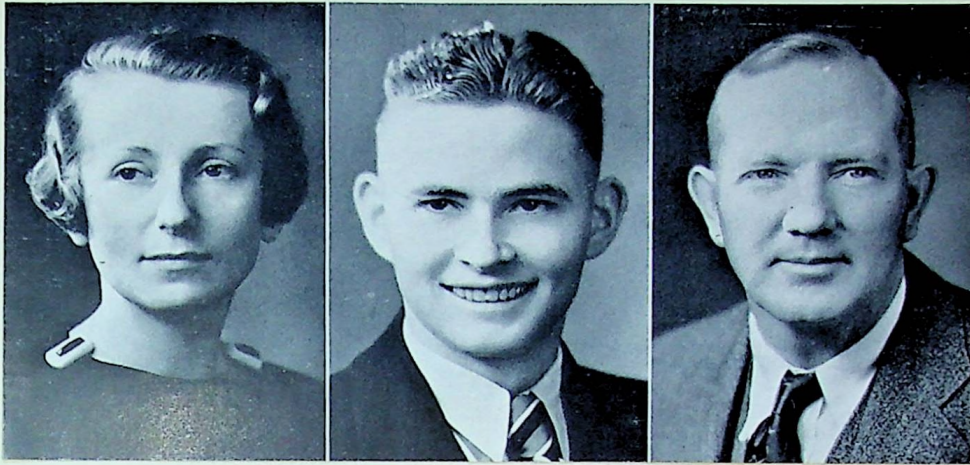


1  
9  
3  
4

### FACULTY

First Row: Mr. Pierce (principal), Miss Newbecker, Mr. E. C. Peterson, Mrs. Nordstrom.  
 Second Row: Miss Roper, Mr. Henderson, Miss Kraeger, Mr. Catlin.  
 Third Row: Mrs. Carner, Mr. Bunger, Miss Chaplin, Mr. Vaniman.  
 Fourth Row: Mr. C. Peterson, Miss Breed, Mr. Schreiber, Mrs. Nichols.  
 Fifth Row: Miss Larson, Mr. Rhoades, Miss Devereaux, Miss Peterson.  
 Miss Knapp (no photo).





Miss Kraeger

Edgar Dunn

Mr. Bunger

V  
I  
K  
I  
N  
G

## SENIOR CLASS

*President*.....EDGAR DUNN  
*Vice-President*.....HARVEY PETERSON  
*Treasurer*.....CHARLES SCHAFFER  
*Secretary*.....JUNE KERN  
*Yell Leader*.....EDGAR DUNN  
*Advisors*.....MISS KRAEGER, MR. BUNGER  
*Class Colors*.....RED AND WHITE

WITH THE CLOSE of school, the happiest four years in our lives become memory. Our four years of training lie behind us and we stand on the very threshold of life.

For the invaluable advice and careful training given us by our teachers, we express our sincere appreciation; to our advisors, we extend our heart-felt gratitude for the unselfish devotion and interest they have displayed towards us in directing us along the path of education.

1  
9  
3  
4



WE  
V  
I  
K  
I  
N  
Z  
G  
V  
I  
N  
J  
9  
3  
4

*Quaeth*  
*"Polly"*



**Judith Alen**

Orchestra, 32, 33, 34; Art Club, 33; German Club, 34; "My Cousin From Sweden," 34.

**Palmira Cabral**



**Marian Allvin**

Orchestra, 31, 32, 33; Band, 34; Glee Club, 34; "Ask the Professor," 34.

**William Carlson**

F. F. A., 31, 32; Lightweight Football, 32; Football, 33, 34; Baseball, 33; Interclass Track, 32, 33, 34; Interclass Baseball, 33; Interclass Football, 33; Vice-President Glee Club, 32; "Tea House of Sing Lo," 32; "Ask the Professor," 34; "Tweedles," 34; Choc Tau, 33; "K" Club, 33.

**Pete Alves**



**Verne D. Carlstrom**

F. F. A., 31, 32; Latin Club, 33; Secretary-Treasurer of Latin Club, 32; President of Latin Club, 33; Senior Hi-Y, 33, 34; Football, 34; Interclass Football, 34.

**Walter Anderson**

Lightweight Football, 32; Football, 33, 34; Basketball, 34; Baseball, 34; Track, 34; "K" Club, 33; "Sound Your Horn," 33; "Tweedles," 34; "Great Caesar!," 34; Business Manager of Annual.

**Arthur Christenson**

F. F. A., 31, 32, 33, 34; Interclass Indoor, 31, 32; Interclass Track, 33, 34; Fresno County Commercial Contest, 33, 34; Boys' Athletic and Advertising Manager, 34; Board of Managers, 34.

**Alice Aslan**

Interclass Volleyball, 31; Hiking Club, 31; Class Treasurer, 32; Awahnee Camp Fire Girls, 31; "Sound Your Horn," 33; Choc Tau, 33.

**Arthur Clark**

F. F. A., 31, 32, 33, 34; Class Sergeant-at-Arms, 31; Football, 32, 33, 34; Interclass Football, 33, 34; Basketball, 31; "K" Club, 32, 33; "Ask the Professor," 34; Tennis, 33, 34.

**Junice Benson**

Awahnee Camp Fire, 31, 32, 33; "My Cousin From Sweden," 34.

**Tom Cooper**



**Eugene Bjorklund**

Glee Club, 31, 32, 33; Chorus, 34; F. F. A., 34; "Tea House of Sing Lo," 32; "Ghost of Lolly Poy Bay," 33; "The Count and the Co-ed," 31; "Ask the Professor," 34.

**Roy Dahl**

Lightweight Football, 32, 33; Football, 31, 34; Basketball, 31, 32, 33, 34; Baseball, 31, 32, 33, 34; Track, 32, 34; "K" Club, 33; Senior Hi-Y, 33, 34.





**Edgar Dunn**

Lightweight Football, 32; Football, 33, 34; Baseball, 31, 32, 33, 34; Track, 31, 32, 33, 34; Tennis, 33, 34; President of Class, 32, 33, 34; "K" Club, 32, 33; Interclass Football, 33, 34; Interclass Baseball, 33; Interclass Track, 31, 32, 33, 34; Interclass Indoor, 31, 32, 33, 34; Class Yell Leader, 31, 34; Student Body Yell Leader, 32; "Tweedles," 34; Senior Hi-Y, 33, 34.

**Clara Eastlund**

"Ask the Professor," 34; Glee Club, 34; Secretary of Glee Club, 34.

**Nime Erickson**

"Ask the Professor," 34; Glee Club, 34.

**Toshiye Ezaki**

**Joy Fink**

**Walfred Flod**

F. F. A., 31, 32; Football, 33.

**Herbert Flood**

"Sound Your Horn," 33; Choc Tau, 33; Football, 33, 34; Vice-President of Class, 31, 32; Aero Club, 31.

**Richard Forsblad**

Interclass Football, 34; Snapshot Editor of Annual, 34; Band, 33, 34.

*Clara*  
**Una Fredlund**

Dinuba High School, 31, 32, 33.

*Nime*  
**Marjorie Goble**

Interclass Volleyball, 31, 32, 33; Spanish Club, 32; Fresno County Commercial Contest, 34.

**Charlie Goorigian**

F. F. A., 31, 32, 33, 34.

*Judith*  
**John Gunnarson**

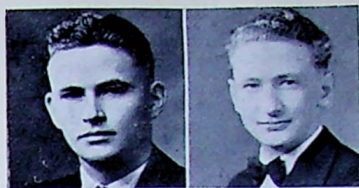
Basketball, 31, 32; Lightweight Football, 33; "Ghost of Lolly Pop Bay," 33; Glee Club, 33; Chorus, 34; "Ask the Professor," 34; Spanish Club, 32, 33; Extemporaneous Reading, 33; "Tweedles," 34.

**Alice Gustafson**

Interclass Volleyball, 31, 32; "Ghost of Lolly Pop Bay," 33; "Ask the Professor," 34; Glee Club, 33; Chorus, 34.

**Eileen Hallsten**

Honor Society, 31, 32, 33, 34; Interclass Indoor, 33; Spanish Club, 32; Choc Tau, 33; "Sound Your Horn," 33; "Tweedles," 34; Calendar Editor of Annual; "Our Cousin From Sweden," 34.



THE  
V  
I  
K  
I  
N  
G  
"Margie"

1  
9  
3  
4



*Helen Hanson*

*Etta Kaiser*

ME  
V  
I  
K  
N  
Z  
G



**Helen Hanson**

Loveland, Colorado, 31; Rock Springs, Wyoming, 32; "Ghost of Lolly Pop Bay," 33; "Ask the Professor," 34; Chorus, 34; Secretary of Chorus, 34; "Tweedles," 34. "Great Caesar!," 34.

**Etta Kaiser**

Volleyball, 31, 32, 33, 34; Girls' "K" Club, 31, 32, 33, 34; Interclass Volleyball, 31, 32, 33, 34; Interclass Baseball, 31, 32; "K" Club President, 34; Chorus, 34; Chorus Librarian, 34; "Ask the Professor," 34.

*Sybil Hovnanian*

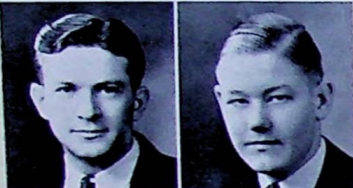


**Sybil Hovnanian**

Interclass Indoor, 31, 32, 33; Interclass Volleyball, 31, 32; Glee Club, 34; "Ask the Professor," 34.

**June V. Kern**

Staff and Scroll, 33; Freshmore League Council, 31; Ahwance Camp Fire, 31; "The Ghost of Lolly Pop Bay," 33; "Ask the Professor," 34; Class Secretary, 34; President of Glee Club, 34; Glee Club, 33, 34; Student-Body Vice-President, 34; Board of Managers, 34; Assistant Business Manager of Annual.



**Raymond Huddleston**

Chorus, 34; "Ask the Professor," 34.

**Glenn Kolander**

Spanish Club, 33; Football, 32, 33, 34; Interclass Football 34; Senior Hi-Y, 33, 34.

*Evelyn Jacobsen*



**Evelyn Jacobsen**

Interclass Volleyball, 32; Chorus, 34; "Ask the Professor," 34; Fresno County Commercial Contest, 33, 34.

**Roy Larson**

**Frances Loucks**



**Henry Jewell**

Basketball, 32; Lightweight Football, 33; Track, 32, 33; Interclass Track, 32, 33, 34; Spanish Club, 32; Interclass Indoor, 32; Interclass Basketball, 32.

Kerman Union High School, 31; Interclass Indoor, 32, 33; Interclass Volleyball, 33, 34; Band, 32; Orchestra, 32, 34; Chorus, 34; President of Orchestra, 34; "My Cousin From Sweden," 34; "Ask the Professor," 34; "Tweedles," 34.

**Mildred Johnson**

Interclass Baseball, 31, 32, 33, 34; Interclass Volleyball, 31, 32, 33, 34; Baseball, 34; Volleyball, 34; Spanish Club, 32; German Club, 34; Girls' "K" Club, 34.

**Ruth Elizabeth Lundberg**

Glee Club, 32; "gTea Glee Club, 32; "Tea House of Sing Lo," 32; Snapshot Artist of Annual; Interclass Indoor, 32.

*Mildred Johnson*



**Virginia Johnson**

"The Count and the Co-ed," 31; "Sound Your Horn," 33; Glee Club, 31, 34; "Ask the Professor," 34.

**Kay Matsuoka**

Honor Society, 31; Basketball, 32, 34; Track, 33; Interclass Track, 32, 33; Student Body Stage Manager and Sergeant-at-Arms, 34; Board of Managers, 34; Spanish Club, 32.



*Virginia Johnson*

4



**Elton Melin**

Orchestra, 31, 32, 33, 34; Band, 31, 33, 34; F. F. A., 32, 33, 34; Secretary of F. F. A., 34.

**Alvin Mellow**

**Edward Morine**

Interclass Track, 31, 32; Interclass Football, 31; Interclass Indoor, 31, 32; Chorus, 34; "Ask the Professor," 34.

**Harry S. Nakata**

F. F. A. 31, 32; Latin Club, 33; Interclass Track, 32, 33, 34; Basketball, 33, 34.

**Ethel Nord**

Interclass Volleyball, 21, 33, 34; Interclass Indoor, 31, 32; "Ask the Professor," 34; Glee Club, 34; Treasurer of Glee Club, 34.

**Helen Nord**

Interclass Baseball, 31; Interclass Volleyball, 31, 32, 34; Volleyball, 33, 34; Girls' "K" Club, 33, 34.

**Melvin H. Norman**

Spanish Club, 32, 33; Interclass Track, 32, 33, 34; Basketball, 33; Senior Hi-Y, 33, 34.

**Herman Olsen**

Sanger High School, 31, 32; Basketball, 33; Lightweight Football, 34; Humor Editor of Annual.

**Bertha Oneal**

Volleyball, 31, 32, 33, 34; Freshmore League Council, 31; Class Secretary, 32; Fresno County Commercial Contest, 32; Tennis, 33, 34; Spanish Club, 33; Spanish Club Secretary, 33; G. O. S. League Sec'y., 33; "Sound Your Horn," 33, 34; "K" Club President, 33; "K" Club Treasurer, 34; President of Chorus, 34; "Great Caesar!"; "Ask the Professor," Ass't Adv. Manager of Annual.

**Dennis Orr**

Interclass Track, 32; "Ask the Professor"; Chorus, 34.

**Clifford Palm**

Lightweight Football, 32; Football, 31, 32, 33, 34; Basketball, 32; Hi-Y, 32, 33, 34; Hi-Y Vice-President, 34; Band, 31, 32, 33, 34; President of Band, 33, 33; Vice-President of Band, 32; F. F. A. 31, 32, 33, 34; F. F. A. Treasurer, 33; F. F. A. President, 34; Class President, 31; "K" Club, 32, 33, 34.

**Dorothy Patz**

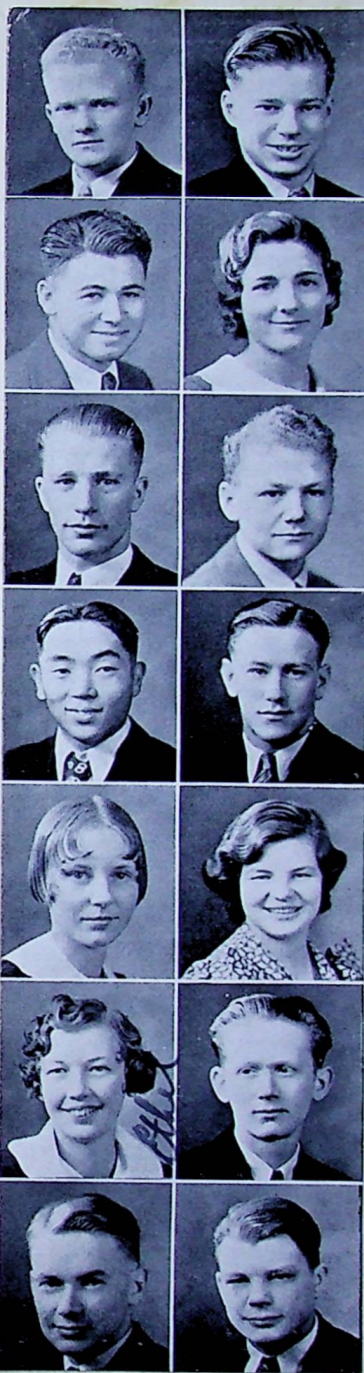
Visalia High, 32; Girls' Athletic and Advertising Manager, 34; Girls' Sports Editor of Annual; Baseball, 33, 34; Girls' "K" Club, 34; Ahwanee Camp Fire 33.

**Clifton S. Pearson**

F. F. A., 32.

**Harvey Peterson**

Class Treasurer, 31; Lightweight Football, 32; Football, 33, 34; "The Count and the Co-ed," 31; "Tea House of Sing Lo," 32; "Ghost of Lolly Pop Bay," 33; "Sound Your Horn," 33; Choc Tau, 33; Aero Club, 31; Glee Club, 31, 32; Pres. of Glee, 33; "K" Club, 33; "Tweedles."





*Carol Pierson*

V  
I  
K  
I  
N  
G



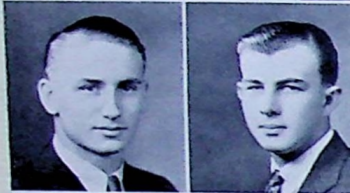
**Carol Pierson**

Spanish Club, 32; Honor Society, 31, 32, 33, 34.



**Phyllis Quist**

Volleyball, 33, 34; "Ask the Professor," 34; Glee Club, 34; Ghost of Lolly Pop Bay," 33; Choc Tau, 33; Staff and Scroll, 33; Interclass Volleyball, 31, 32, 33, 34; Interclass Indoor, 31, 32; Girls, "K" Club, 33, 34; Glee Club Sergeant-at-Arms, 33; Hiking Club, 32; Orchestra, 31, 32.



**Waldo Rae**

Spanish Club, 32, 33.



**Max Ratliff**

**Alice Rosander**

Honor Society, 32, 33, 34; Interclass Volleyball, 32, 33; Latin Club, 33; Choc Tau, 33; "Sound Your Horn," 33; "Our Cousin From Sweden," 34.



**Florence Rudholm**

Volleyball, 31, 32, 33, 34; Baseball, 31, 32, 33, 34; Interclass Volleyball, 31, 32, 33; Camp Fire Girls, 32, 33; Girls' "K" Club, 32, 33, 34; Vice-President of "K" Club, 33, 34.



**Frances Rufert**

Honor Society, 31; Spanish Club, 32, 33; G. O. S. League Council, 34; Historian of Annual, "Ask the Professor," 34; Chorus, 34.



**Rousas John Rushdoony**

Debating, 32; Baseball, 32, 33; Lightweight Football, 33, 34; Spanish Club, 33; President of Spanish Club 33; Class Treasurer, 33; Extemporaneous Reading, 34; Senior Hi-Y, 33, 34; President of Senior Hi-Y, 34; President of Student Body, 34; Board of Managers, 34; Choc Tau, 33; Editor-in-Chief of Annual, Advertising Manager of Annual.

**Clara Schill**

Lowell High, San Francisco, 32; Ahwance Camp Fire, 33; Fresno County Commercial Contest, 33, 34.

**Charles Schaffer**

Interclass Track, 33; Football, 33, 34; Treasurer of Class, 34; "K" Club, 33; Spanish Club, 33; Boys' Sports Editor of Annual, Senior Hi-Y, 33, 34.

**William Schneider**

Junior Class President, 34; Honor Society, 32, 33, 34; "Seventeen," 34; Student Body Treasurer, 34; Fresno County Commercial Contest, 33; Lightweight Football, 32; Tennis, 33.

**Clifford Sherman**

Glee Club, 31, 32; F. F. A. 31, 32, 33, 34; Chorus, 34; "Count and the Co-ed," 31; "Ask the Professor," 34; Football, 34.

**Tulla Staples**

Class Secretary, 31; Hiking Club, 32; Girls' "K" Club, 32; Freshmore League Council, 32; Tennis, 32, 33; Art Club, 33; "K" Club Treasurer, 33; Reporter of G. O. S. League, 33; Wa-Wa-Te-Si, 32; President of G. O. S. League, 33; Organization Editor of Annual; "K" Club Secretary, 34.

**Harry Strid**

F. F. A. 31, 32; Band, 31, 32, 34; Football, 32, 33, 34; "K" Club, 32, 33.

*Alice*

*Florence*

1  
9  
3  
4



*Evelyn Ingrid*

**Evelyn Swanson**

Secretary of Student Body, 34; Board of Managers, 34; Fresno County Commercial Contest, 34.

**Ingrid Walden**

Spanish Club, 32; Fresno County Commercial Contest, 33; "Ask the Professor," 34; Glee Club, 34; Student Body Purchasing and Advertising Manager, 34.



**Blanch Sward**

Interclass Volleyball, 32; "Ask the Professor," 34; Chorus, 34.

**Carl Wendling**

F. F. A. 31, 32, 33, 34.

*Blanche*



**Howard Sward**

F. F. A., 33, 34.

**Florence Werner**

Spanish Club, 33; "Tea House of Sing Lo," 32; "Ask the Professor," 34; Schol Pianist, 33, 34.



**Gertrude Tapp**

Interclass Baseball, 31, 32; Interclass Volleyball, 31, 32; Sergeant-at-Arms of Girls' "K" Club, 33; Librarian of Orchestra, 33; Librarian of Band, 34; Glee Club Reporter, 34; Glee Club, 34; "Ask the Professor," 34; "Tweedles," 34.

**Edith Westlund**

Glee Club, 31, 34; "The Count and the Co-ed," 31; "Ask the Professor," 34.

*Gertie*



**Dale Vaughan**

F. F. A., 31, 32, 33, 34.

**Paul Wiese**

Baseball, 32, 33, 34; Interclass Indoor, 31, 32, 33; Interclass Track, 31, 32, 33, 34; Interclass Football, 31, 33, 34; Band, 32, 33, 34; Chorus, 34; "Ask the Professor," 34; F. F. A., 31, 32, 33; "K" Club, 32, 33.



**Yoshito Yamada**

Spanish Club, 33; Interclass Indoor, 33; Interclass Track, 32, 33, 34; Lightweight Football, 33, 34; Interclass Lightweight Football, 34; Basketball, 33, 34; Track, 33.





## HISTORY OF THE CLASS OF '34

V IN THE FALL OF 1930, we the Class of '34, entered Kingsburg High numbering 95 very inexperienced little Freshmen. We were introduced to the hardships and joys of a high school education at a wonderful reception at which we were first treated as babies and then entertained as guests of honor.

K When the atmosphere had sufficiently cleared and it was quite safe to pass in the halls, we elected class officers. Clifford Palm was elected president.

I Our motto seems to have been "Set a goal and then reach it." At any rate, we worked for a good party and succeeded in winning the \$25.00 prize over the other classes.

N With this wealth at our command, we planned a picnic at Mooney's Grove, which proved even a greater success than the party. The boys, however, were a bit tired after they rowed the girls around on the little lakes all day.

G Another prize was ours in the May Day parade. Our class float won first prize for originality.

As Sophomores, we looked forward to initiating the Freshmen as properly as we had been initiated. We succeeded admirably, and the Freshmen entered school properly instructed in the matters of personal cleanliness.

Our class has been noted for its informal parties and the party given in our Sophomore year was no exception.

It was during this year that the members of our class began to bring honor to our school. In the county track meet, our class president, Edgar Dunn, made quite a record. Florence Beck won third place in the county typing contest.

As Juniors we enjoyed more success than ever. The Junior Play, our first dramatic venture, "Sound Your Horn," was presented to a large audience.

In the extemporaneous reading contest, Kingsburg High was represented by two Juniors, John Gunnarson and Florence Beck. John won the division while Florence won the division and county championships.

I In the State Creative Verse Contest, five Kingsburg students entered poems. Three were Juniors and three were among the four from this school who received honorable mention. They were Frances Rufert, Florence Beck and Rousas Rushdoony.

9 Our Color Day was a complete victory, as the Seniors dared not sally out against us.

3 Toward the latter part of the year, we "seized" the Viking News, the school paper, from the Seniors and put out the best issue of the year. The rage of the Seniors knew no bounds.

4 On May Day, we elected Evelyn Jacobsen as our queen. Our boys won the Queen's Relay and Evelyn was crowned Queen of May.

As all of our class money was in the bank when it became insolvent,



we were just a little bit worried about the customary Junior-Senior Banquet. We solved this by giving an informal overall-and-gingham banquet instead and it was immensely enjoyed by both classes. The largest attendance at any Junior-Senior Banquet ever held in Kingsburg High was the record we set.

As we began our Senior year, we felt somewhat different at the responsibility of our position. Although now dignified in appearance, we retained our fun-loving nature.

Our first social event of the year was a reception for the Freshmen in order to get acquainted with the "infants" and start them off on the right track. We dispensed with the usual ill-treatment of the Freshies at such receptions and gave them a good party.

We next gave a party for ourselves and adhered to our policy of informal parties only. Apple-eating and pie-eating contests and other similarly ludicrous games served to dispell any clouds of worry concerning class work.

The Senior Steak Bake was held in the spring of the year. In the past years, the Steak Bakes have always been held in the fall, but we reversed the date and the change provd to be a good one. The Steak Bake was great fun for all who attended. With a glorious moon, a big fire blazing cheerfully, and the steaks spluttering over the fire, it was a glorious evening, indeed. Games were played in the huge Bear Pit in the light of the fire, which was reflected on the stone walls on all sides.

The teachers furnished most of the entertainment. Barking like coyotes and taking a leading part in all games, they amused us royally. "Thank you all for the splendiferous time," said the teachers, and we Seniors graciously made no comment on their English.

Senior Dress Up Day presented a wide variety of costumes. Rag dolls, little Lord Fauntleroy, a Roman soldier, farmers, flappers, and, in fact, every sort of creature imaginable paraded the campus. The Juniors were jealous but it did them no good nor did it bother us.

Rousas John Rushdoony represented us in the extemporaneous reading contest and won both the division and the county contests.

Our Senior play, "Tweedles," was greatly enjoyed by all who saw it.

Senior Day was spent in Fresno. In the morning, ice cream plants and other manufacturers who furnished samples, were visited. The county jail was also inspected. Lunch was had at the Roeding Park. A swim at the plunge and a theater party wound up the day.

At the May Festival, our Senior Queen, Edith Westlund, was crowned Queen of May.

Laying aside all previous differences, the Juniors gave us a farewell banquet and we parted amicably. The banquet was greatly enjoyed.

This was soon followed by the Baccaulareate services.

Then came the crowning event of our four years in high school: Commencement. It is with a sigh of regret that we turn away from our beloved high school, for some of our dearest memories are centered around its cloistered halls.

ME  
V  
I  
K  
I  
N  
G  
1  
9  
3  
4





First Row: Emma Haworth, Marjorie Alves, Viola Bystrom, Jean Gustafson, Hisako Ezaki, Harriet Fields, Ruth Anderson, Alice Craveiro, Ruth Hultgren, Eleanor Broline, Donna Henderson, Jean Erickson, Marian Johnson, Thelma Boren, Helen Jewell.

Second Row: Lowell Erickson, Amar Andranigian, Kazuo Inouye, Chester Jern, Gordon Hanson, Bertil Hallsten, Harry Johnson, Merion Croft, Warren Hovnanian, LeRoy Giannini, Avedik Avedikian, Donald Brown, Ralph Jacobsen, Forrest Carlstrom, Kuyoshi Hirano.

Third Row: Victor Anderson, Carl Johnson, Clyde Howell, George Fukagowa, Manfred Hillblom, James Hampton, Conrad Kolander, Quinton Bruce, John Hovhannesian, Raymond Anderson.

Fourth Row: Harold Andrews, Floyd Haskell, Joel Howard, Ernest Haley, Forrest Crouser, Orville Burgeson, Andrew Deranian.

## FRESHMEN

First Row: Mildred Seward, Blanche Shahanian, Evelyn Olson, Nadine Puckett, Elsie Strom, Barbara Ulrich, Pauline Peterson, Phyllis Olson, Neva McNaught, Madelaine Wildermuth, Amelia Nunes, Laura Magnuson, Charlotte Store, Helen Stallings.

Second Row: Curtis Martin, Claud Rouch, Helen Skoglund, Nadine Stokes, Helen Pazeian, Mary Ann Satterberg, Elaine Lindquist, Mildred Wilson, Hazel Yost, Angus Walker, Robert Westlund, Allen Larson, John Rosander.

Third Row: Walter McNab, Jimmie Shintaker, Velty Norman, Wilbur Rudholm, Harold Roberts, Eldon Nyberg, Eric Walden, Kenneth Strid, George Powell, Manuel Ramirez, Noburo Yoshimoto, Clarence Lindstrom.

Fourth Row: Lawrence Nelson, Stanley Lindstrom, Dale Turner, Walter Sadonko, Ned Reed, Ruben Parra, Lawrence Peckfelder, Jack Larson.





## FRESHMEN

*President*..... LEROY GIANNINI  
*Vice-President*..... STANLEY LINDSTROM  
*Secretary-Treasurer*..... PHYLLIS OLSON  
*Yell Leaders*..... CONRAD KOLANDER, ELEANOR BROLINE  
*Advisors*..... MRS. CARNER, MR. VANIMAN

IN THE FALL OF 1933 over a hundred Freshmen entered Kingsburg High School, shy, trembling and fearful. The Sophomores were prepared to greet the "infants" but, due to new restrictions placed on hazing of Freshmen, nothing could be done.

In the Freshmen-Sophomore Brawl on the second day of school, the Freshmen forgot their bashfulness and fought long and hard to come off with a tie and a moral victory.

It was a great brawl while it lasted. The tug-of-war was close and it was some time before the Sophomores were ingloriously pulled through the water. In the sack rush a great free-for-all was enjoyed, mostly by the spectators, however, who cheered on the combatants. Battering each other beyond recognition, the Freshmen and the Sophomores fought for fully half an hour before the sacks were finally dragged across the respective lines.

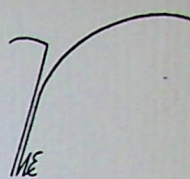
The jousting contest was a colorful one in every sense of the word. Dipping their padded poles into buckets of paint, the warriors charged on their enemy upon their snorting and spluttering human steeds. When the battle was over, the contestants were displaying hair of mixed red and green hue, and their clothes—what remained of them—were like the rainbow.

The relay race was amusing but not nearly so disastrous to the contestants features. Nevertheless some of the more bulky Freshmen and Sophomores found it difficult to crawl under the tightly nailed canvas, wriggle through the barrels, and similar obstacles.

After the Brawl, the Freshmen were the belligerents rather than the Sophomores, who meekly went their way without hindering any so-called "infants."

For a Freshmen Class, the Class of '37 has distinguished itself by the prominent part it has taken in school activities, athletics, and by a large membership in the Honor Scholarship Society.

For its splendid work and support, the Freshmen Class is placed ahead of the Sophomores in the Viking.



V

I

K

I

N

G

I

9

3

4





First Row: Nobuye Asamoto, Evangeline Bellocchi, Tsugi Hamada, Anita La Corte, Alice Hussian, Roxie Hovhannesian, Margaret Ito, Lorraine Cedarquist, Verna Crass, Junice Alen, Elvera Craveiro, Hildur Ahlstrom, Ellen Hedberg, Ruth Hanson.

Second Row: Takashi Inouye, Jeanne Henderson, June Crouser, Dorothy Flood, Elizabeth Bjorklund, Harriet Buehler, Hildur Christenson, Alta Goorugian, Faybelle Dean, Melba La Corte, Pauline Johnson, Luella Anderson, Robert Carlson.

Third Row: Donald Galloway, John Deguchi, Herman Hansen, Lloyd Bjord, Robert Howell, Horace Carter, Carl Gunnarson, Sam Deranian, Wallace Christenson, Ransome Broline, Harry Jewell, Lowell Fridborg.

Fourth Row: Leslie Hard, Willis Ecklund, Billy Barnes, Henry Kaiser, Marion Waters, Robert Davidson, Carl Johanson, Paul Schofield, Graydon Croft, Lewis Gruenwald.

## SOPHOMORES

First Row: Hosmig Safarjian, Ruby Vartanian, Bernice Sparks, Matsuko Matsushita, Inez Nelson, Janette Nystrom, Della Williams, Yetsuko Nomura, Rosalie Renstrom, Mildred Ratliff, Nuel Vandagriff, Arlene Spraker, Wilma Null, Esther Olson.

Second Row: Pauline Stone, Virginia Waggoner, Evelyn Waters, Luella Stober, Rhoda Satterberg, Lillian Munday, Alys Olson, Jacqueline Tapp, Astrid Pearson, Alice Swanson, La Verne Rosander, Corence Peterson, Pauline Reilly.

Third Row: Burnett Olson, Billy Ward, Charles Ratliff, Robert Scott, Stanley J. Olson, Roger Peterson, Woodrow Nelson, Chester Nord, Leroy Newell, Warren Norman, Edmond Peterson, Dwight Nelson, Kazutoshi Sakayama, Ardson Shegoian.

Fourth Row: Roy Petersen, David Wenall, Scot McKenry, Lorin Vaughan, Walter Westerberg, Phillip Strid, Vensel Swenson, Kenneth Pearson, Gordon Trank, Joe Magona.



ME  
V  
I  
K  
I  
N  
G

1  
9  
3  
4



## SOPHOMORES

<i>President</i> .....	DWIGHT NELSON
<i>Vice-President</i> .....	KATHRYNE RATLIFF
<i>Secretary</i> .....	ARLENE SPRAKER
<i>Treasurer</i> .....	HILDUR AHLSTROM
<i>Yell Leaders</i> .....	ROBERT CARLSON, JUNE CROUSER
<i>Advisors</i> .....	MISS NEWBECKER, MR. HENDERSON

WHEN THE CLASS of '36 began its Sophomore year last fall with one hundred one members, the second largest class in Kingsburg High, it was determined to prove its worth to the school by showing the supposedly inferior Freshmen how experienced Sophomores were.

An inglorious defeat in the Freshmen-Sophomore Brawl took considerable of the confidence out of the Sophomores.

In favor of the Sophomores, it must be said that a large number of them participated in school activities.

"Ks" were earned in volleyball by Mildred Ratliff, Ruth Hanson, Evelyn Waters, and Alys Olson. Ruth Hanson was pitcher on the indoor baseball team. Evelyn Waters, Virginia Waggoner, and Tsugi Hamada also played on the indoor baseball team. Ruby Vartanian of the mixed doubles team and June Crouser of the girls' doubles team represented the Sophomores in tennis.

Four Sophomore boys were on the track team: Carl Johanson, Warren Norman, Gordon Trank, and John Deguchi. Kenneth Pearson, Douglas Wilson, and Walter Westerberg made their letters in baseball.

In football, John Peterson, Robert Howell, Paul Pettigrew, Burnett Olson, John Deguchi, Warren Norman, Kenneth Pearson, and Wallace Christenson were on the lightweight squad.

In A class basketball, Lewis Gruenwald played as forward. In the B class, Paul Pettigrew, Warren Norman, Kenneth Pearson, and Wallace Christenson all played. John Deguchi, Woodrow Nelson, and Gordon Trank were on the lightweight basketball roster.

June Crouser was the Sophomore Queen in the May Day parade.

Robert Carlson was the student body yell leader.

The class had a number of its members in both the band and the orchestra as well as the glee club and the chorus.

Ruby Vartanian, Janette Nystrom, Arlene Spraker, Junice Alen, and Alys Olson were members of the Honor Scholarship Society.

The social event of the year was a "hard times" party held on May 25.

Since the Sophomores trailed the Freshmen and the Juniors in their support of the annual, they are placed behind them in the annual.

V  
I  
K  
I  
N  
G

1  
9  
3  
4





First Row: Kay Matsuoka, Evelyn Swanson, Dorothy Patz, Marguerite Rouch, Eileen Swedell.  
Second Row: Rousas John Rushdoony, Mr. John F. Pierce, Mr. George G. Henderson, William Schneider.

## STUDENT BODY

President..... ROUSAS JOHN RUSHDOONY  
 Vice-President..... JUNE KERN  
 Secretary..... EVELYN SWANSON  
 Treasurer..... WILLIAM SCHNEIDER  
 Business Manager and Purchasing Agent..... INGRID WALDEN  
 Girls' Athletic and Advertising Manager..... DOROTHY PATZ  
 Boys' Athletic and Advertising Manager..... KAY MATSUOKA  
 Stage Mgr. and Sergeant-at-Arms..... ARTHUR CHRISTENSON  
 Yell Leader..... ROBERT CARLSON  
 Ass't Yell Leaders..... MARGUERITE ROUCH, EILEEN SWEDELL

**D**UE TO THE FAILURE of the local bank last spring, the Student Body entered the school year in a difficult position. For the first time in many years, funds were lacking. One of the first actions taken was to settle up all accounts encountered last year.

A student Body ticket selling program was launched soon after the start of the school year. The ticket entitled students to admission to all home games plus a special discount for out of town games, to all student body programs and also covered the class dues.

Several of the athletic teams, all of which are sponsored by the Student Body, were presented with new athletic equipment.

A program was presented in assembly practically every week. A number of speakers from all corners of the earth were secured. Several colleges and junior colleges staged programs for us. The school band, orchestra, glee club and chorus made frequent appearances.

The Student Body sent a delegation of approximately fifty boys and girls to the fifth annual Fresno County Ideals Conference.



## ALUMNI

IN THE PAST, it has been customary to devote this page to the outstanding members of the Kingsburg High alumni. Kingsburg High is proud of its sons who have achieved fame on the gridiron, in medicine, in business, in the field of literature, and who have in many other ways distinguished themselves and brought fame and honor to Kingsburg.

But we are also proud of the other members of the alumni, those who compose the common citizenry of this nation. We are proud of the teachers, the farmers, the workers, the clergymen, the clerks, the missionaries—the everyday people of our alumni who form the backbone of this nation.

Mr. E. C. Peterson, in speaking at the Junior-Senior Banquet last year, declared that of the 900 alumni of this high school not one has ever been convicted of a moral or criminal crime. In addition to pointing out clearly the splendid training given to young men and women in Kingsburg High School, these figures also show the contribution this school is making to the nation in training its students so ably.

The alumni of this high school, regardless of their station, are making a success of life. Success in life is the ability to cope with circumstances and do one's work, no matter how humble, honestly and well. The Egyptian Pharaohs who built the great pyramids of Egypt achieved fame. Yet without the thousands of workers they could have done nothing. A few men are given credit for our success in the Revolutionary War, yet without the thousands of unknown patriots and soldiers they could have done nothing. The great army of the common people who build our houses, dig our coal, make our roads, raise our food, and who live a busy, industrious and honest life are very ordinary people indeed, yet it is on them that the wheels of industry turn. Each one in this army of common, unknown people who does his work well and performs his daily task to the best of his ability is a success in life. The alumni of Kingsburg High are successes in life.

In the ranks of the alumni of this school are also many great men. Greatness and fame are two widely separated things. Great men can be famous, but relatively few great men are famous. Men in the ordinary walks of life can be great men. The missionaries, the educators, the pioneers, who sacrifice continually for others are great men. The purpose in life for great men is not to live for themselves but to live for others. And even a shoemaker can be truly great if he wishes.

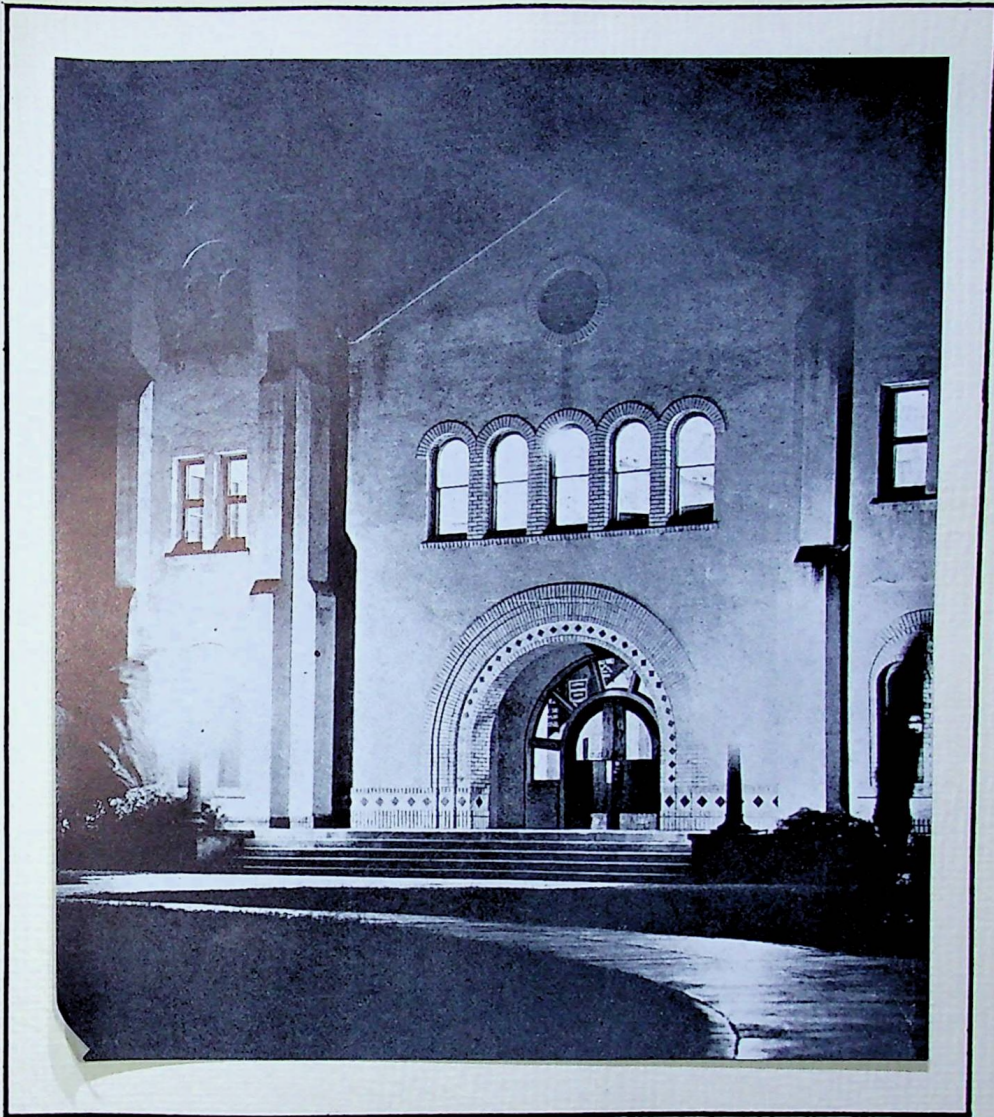
And, so, we dedicate this page of the 1934 Viking to the unheralded members of the alumni, the "men in the ranks."



ORGANIZATIONS

---





*There are days we remember  
With joy and with tears;*



WE  
V  
I  
K  
I  
N  
G



Eileen Hallsten



William Schneider

## HONOR SCHOLARSHIP SOCIETY

<i>President</i> .....	VERNA HANSON
<i>Vice-President</i> .....	ELAINE PETERSON
<i>Secretary-Treasurer</i> .....	PAULINE BERG
<i>Advisor</i> .....	MISS ELSA KRAEGER

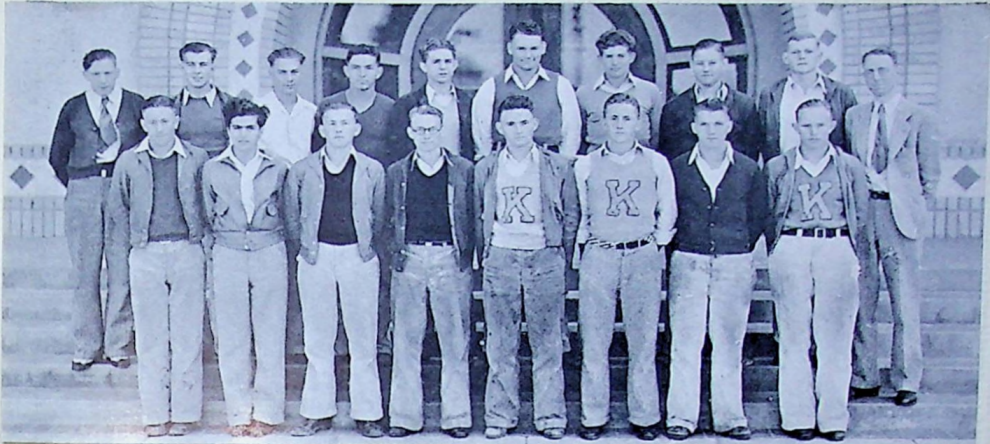
**D**UE TO THE HIGHER standards for membership in the California Scholarship Federation, its number of members in Chapter 110 has somewhat decreased. Nevertheless, its members are prouder than ever to belong to this organization, which stands for high ideals of scholarship and service.

During the past year, members of this chapter have attended district and regional conventions. The spring convention of the Twentieth District was held at the Fresno State College with Fresno High School acting as hosts. Verna Hanson and Pauline Berg attended as delegates from Kingsburg. The fall convention was held at Tranquility, and William Schneider and Arlene Spraker acted as delegates at this meeting. The Kingsburg Chapter was elected to lead at the convention to be held this fall at Fowler. The Central Region Convention of the C. S. F. was held at Bakersfield on April 21. Those in attendance were Miss Kraeger, William Schneider, Marguerite Rouch, Verna Hanson, Phyllis Olson, Mildred Seward, Ruby Vartanian, Alys Olson, and Dale Turner.

At the spring student body meeting, Eileen Hallsten and William Schneider were honored and presented with life membership pins in the C. S. F.

Plans are now being made for the organization of a minor society for those who gain from eight to nine and a half points so that they may be urged to work harder and become members of the C. S. F.





First Row: Clifford Palm, Rousas John Rushdoony, Verne Carlstrom, Melvin Norman, Edgar Dunn, Wendell Catlin, Clarence Rudholm, Roy Dahl.  
 Second Row: Waldemar Allvin, Charles Schaffer, Roscoe McKenry, Richard Mack, Eldon Erickson, Jarl Klockars, Clifford Ericson, Glenn Kolander, Chester Westerling, Mr. Glen Vaniman.

## SENIOR HI-Y

- President.....ROUSAS JOHN RUSHDOONY  
 Vice-President.....CLIFFORD PALM  
 Secretary.....CLIFFORD ERICKSON  
 Treasurer.....RICHARD MACK  
 Publicity Agent.....WENDELL CATLIN

**T**HE SENIOR HI-Y has concluded one of the best years in its long history. Founded more than a decade ago, the club has successfully weathered the years until it is now the most outstanding boys organization in this locality.

Starting the year with the initiation of new members, the boys "branded" seven neophytes who sought entrance into the club. All weathered the storm and lived to enjoy a party in their honor.

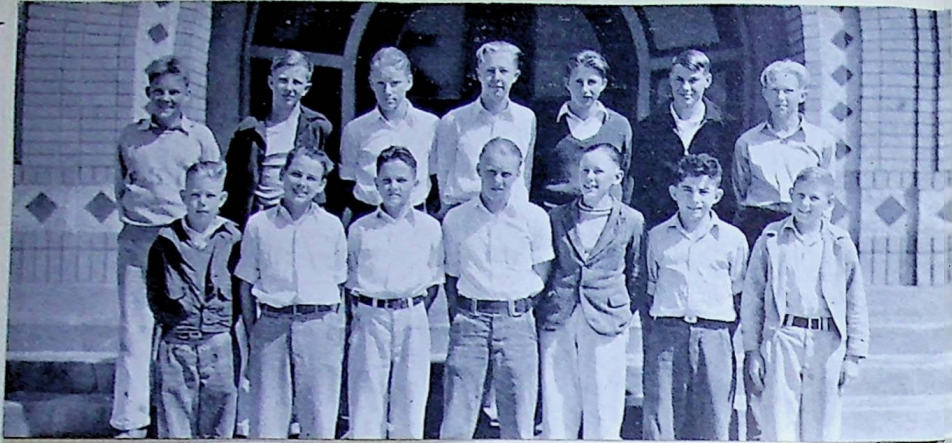
A social meeting was held once a month. Parties were given, with other clubs in the school as guests. A dinner in honor of Fred Kern, a member, was given when he was leaving for Nebraska. A woman party was had at the end of the school year with the boys bringing their girl friends.

Along the line of more masculine entertainment came a number of rough-house meetings, a weiner roast, and the annual snow trip to Lake Sequoia for three days.

Each week the boys held a meeting of instruction at which Mr. Vaniman, their able leader, spoke and then led them in a discussion.

1  
9  
3  
4





First Row: Lowell Erickson, Claud Rouch, Walter McNab, Clarence Lindstrom, Chester Jern, Allen Larson, Duane Paulsen.

Second Row: Wilbur Rudholm, Stanley Schaffer, Jack Larson, Harold Andrews, Orville Burgeson, Carl Johnson, Harry Johnson.

## JUNIOR HI-Y CLUB

<i>President</i> .....	ORVILLE BURGESON
<i>Vice-President</i> .....	JACK LARSON
<i>Secretary</i> .....	ALLEN LARSON
<i>Publicity Secretary</i> .....	CHESTER JERN
<i>Treasurer</i> .....	LOWELL ERICKSON
<i>Sergeant-at-Arms</i> .....	CLARENCE LINDSTROM

**T**HIS YEAR a Junior Hi-Y group was formed by the veteran leader, Elmore "Pedro" Peterson. The club was formed early in the year and was made up of fifteen Freshmen boys. Meetings were held every Tuesday evening at the high school.

1  
9 At the Hi-Y Convention this year at the Roosevelt High School in Fresno from March two to four, the Kingsburg Junior Hi-Y had 100% attendance. The boys found the conference very interesting and instructive.

3 In the beginning of the year the Senior Hi-Y gave a party in honor of the Junior Hi-Y. Later in the year the Junior Hi-Y returned the honor with a party for the Senior group, and it proved a great success.

4 Credit is due to Mr. Peterson for his untiring and incessant efforts in forming this group, which, it is hoped, will continue in its worthwhile course through the coming years.





First Row: Madeline Wildermuth, Pauline Peterson, Betty Bonesteel, Junice Alen, Angus Walker, Clarice Erickson, Miss Kraeger.  
 Second Row: Elizabeth Schreiber, Judith Alen, Mildred Johnson, Virginia Waggoner, Lawrence Nelson, Sylvia Broline, Jean Erickson, James Hampton.  
 Third Row: Harry Johnson, Conrad Kolander, Stanley Lindstrom, Dale Turner, Eleanor Broline, Stanley Schaffer, Harriet Buehler, Harold Andrews.

## GERMAN CLUB

<i>President</i> .....	DALE TURNER
<i>Vice-President</i> .....	ELEANOR BROLINE
<i>Secretary-Treasurer</i> .....	HAROLD ANDREWS
<i>Reporter</i> .....	JUNICE ALEN
<i>Pianist</i> .....	CLARICE ERICKSON
<i>Program Chairman</i> .....	BETTY BONESTEEL
<i>Advisor</i> .....	MISS ELSA KRAEGER

THE OPENING OF THE school term this year brought with it the opportunity to learn a language that has not been taught in high school for several years.

A German Club was organized and regular meetings were held during the year which were interesting and full of pep. The evenings were spent playing German games and singing German songs---not to mention the refreshments.

On December 5 the club helped to entertain at the Principals' Meeting and Banquet by rendering German songs.

The club also gave an assembly program filled with German pep and vigor, and it also took part in the May Day program.

This closes the first chapter in the history of the new German Club. The members are quite pleased with the success of the organization. This was due largely, if not solely, to the efforts put forth by Miss Elsa Kraeger, through whose efforts the club was formed.

1  
9  
3  
4



WE  
V  
I  
K  
I  
N  
G



Miss Newbecker, Eileen Swedell, Frances Rufert, Gladys Rosander, Tulla Staples, Pauline Berg, Verna Hanson, Pauline Stone, Mrs. Nordstrom.

## G. O. S. LEAGUE

<i>President</i> .....	TULLA STAPLES
<i>Vice-President</i> .....	VERNA HANSON
<i>Secretary</i> .....	PAULINE BERG
<i>Treasurer</i> .....	GLADYS ROSANDER
<i>Reporter</i> .....	FRANCES RUFERT
<i>Song Leader</i> .....	EILEEN SWEDELL
<i>Advisors</i> .....	MRS. NORDSTROM
	MISS NEWBECKER
	MISS LARSON

**G.** O. S. LEAGUE has successfully completed another year of service under the guidance of its president and advisors.

Several social functions were held during the year. As a result of a Dues Contest, a Hallowe'en Masquerade Party was held and greatly enjoyed. At Christmas a delightful party was given for the little children of the community. Cheer baskets and toys were distributed to the needy.

A series of entertaining and instructive programs was enjoyed by the League during the course of the school year.

As the school year drew to a close, the girls entertained their guests and their mothers with a reception at the high school during the course of which their installation services were held.

The Girls of Service League has turned another page in the history of its service and instruction. May they continue in their good will and fellowship throughout life.





First Row: Mitsuye Ando, Mildred Ratliff, Phyllis Quist, Tulla Staples, Florence Rudholm, Dorothy Patz, Marguerite Rouch, Ruth Hanson, Ruby Vartanian.  
 Second Row: Lula Dukes, Ruth Hedberg, Etta Kaiser, June Crouser, Sylvia Broline, Gertrude Tapp, Alys Olson, Helen Nord, Bertha Oneal, Evelyn Waters, Alta Goorigian.

## GIRLS' "K" CLUB

- |                               |                  |
|-------------------------------|------------------|
| <i>President</i> .....        | ETTA KAISER      |
| <i>Vice-President</i> .....   | FLORENCE RUDHOLM |
| <i>Secretary</i> .....        | TULLA STAPLES    |
| <i>Treasurer</i> .....        | SYLVIA BROLINE   |
| <i>Sergeant-at-arms</i> ..... | RUTH HANSON      |

**T**HE GIRLS' "K" CLUB is composed only of girls who have earned at least one "K" in one of the three inter-scholastic sports for girls, tennis, indoor baseball, and volleyball. The membership of the club consists of twenty-one girls; nine are Seniors, five, Juniors, six, Sophomores, and one a Freshman.

The advisor of the club is Miss Gretchen Larson.

The girls sold candy at one of the football games to raise money to help pay for club functions.

The Girls' "K" Club also presented a program in assembly.

A party was enjoyed during the last semester at the home of Etta Kaiser.

The club entered a float in the May Day Parade and also took part in the evening program.

All girls who receive four letters in any of the sports are awarded sweaters. Three Senior girls have earned the required amount of letters in the major sports during their four years in high school and will receive Honor Athletic Sweaters. They are Etta Kaiser, Bertha Oneal, and Florence Rudholm.

1  
9  
3  
4





### ADVANCED ORCHESTRA

First Row: Judith Alen, Arlene Spraker, Lois Peterson, Frances Loucks, Pete Alves, Janice White, Alta Goorigian, Dorothy Petersen, Margaret Shellestrom.

Second Row: Junice Alen, Astrid Pearson, Gertrude Tapp, Elton Melin, Roland Croft, Ardsen Shegoian, Edmund Peterson, Eldon Erickson, Leonard Bolinder, Walter Pinheiro.

Third Row: Morris Jacobson, Harold Vandagriff, Jarl Klockars, Wallace Christensen, Richard Forsblad, Mr. Charles Peterson, director.

### BEGINNERS' ORCHESTRA

First Row: Viola Bystrom, Jannette Nystrom, Nobuye Asamoto, Hazel Yost, Della Williams.

Second Row: Amar Andranigian, Ruth Hedberg, Helen Skoglund, Marjorie Alves, Amelia Nunes.

Third Row: Manfred Hillblom, Raymond Huddleston, Palmira Cabral, Janice White, Mr. Charles Peterson, director.

Fourth Row: Chester Jern, Ernest Haley, Tato Garabedian, Orville Burgeson, Willis Ecklund, Ned Reed.





# ORCHESTRA

*President*.....FRANCES LOUCKS  
*Secretary*.....EMOGENE WIESE  
*Librarian*.....DOROTHY PETERSEN  
*Director*.....MR. CHARLES G. PETERSON

WITH A CLASH AND A BANG, the orchestra started one of its most successful years with Charles G. Peterson, the director, swinging the baton.

Each year Mr. Peterson endeavors to organize a better orchestra. He has succeeded to the extent of bringing forth a higher and better grade of music and establishing the orchestra this year as the most successful one ever banded together in this school.

The year was started with twenty-three members. A well-ballanced string section and the necessary complements of reeds and brasses enabled the orchestra to begin the year in splendid order.

The orchestra participated in many of the various school activities. Members of the orchestra were represented in a great number of Student Body programs and were frequently called upon to help out at various functions.

On March 28 the music department presented a program in an assembly meeting in the auditorium and the orchestra took part.

The orchestra played in the May Fair evening program. At all dramatic productions and evening programs, the orchestra was called upon to help out before the production and between acts.

As the culmination of musical activities the orchestra participated in the Fresno County Musical Festival on May 13 at Roeding Park in Fresno and in the graduation exercises here.

In order to give young musicians who have not had any experience in orchestra work a chance to learn something of it, a beginners' orchestra was formed this year through the patient and perseverent efforts of Mr. Charles G. Peterson.

This organization has worked unceasingly through-out the year and has progressed remarkably during that time. Although over-shadowed by the other group, the beginners' orchestra toiled faithfully and were immensely benefited through their own efforts.

A number of the members of the beginners' orchestra will probably take their place among the members of the senior group next and it is hoped that the beginners' orchestra will continue to function in its splendid work of providing a training ground for the orchestra.

VE  
V  
I  
K  
I  
N  
G

9  
3

4





**First Row:** Lowell Erickson, Marion Croft, Forrest Carlstrom, Harry Johnson, Floyd Haskell, Pete Alves, Harold Andrews, Willis Ecklund, Orville Burgeson, Dale Turner, Dwight Nelson, Walter Pinheiro.

**Second Row:** Herbert Flood, Henry Kaiser, Harold Vandagriff, Clifford Palm, Gertrude Tapp, Eldon Nyberg, Harold Roberts, Edmund Peterson, Gordon Hansen, Marian Allvin, Leroy Giannini.

**Third Row:** Kenneth Strid, Morris Jacobsen, Clifford Ericson, Wendell Catlin, Eldon Erickson, Richard Forsbland, Elton Melin, Paul Wiese, Leonard Bolinder, Lawrence Nelson, Stanley Lindstrom, John Edward Olson, Conrad Kolander.

**Fourth Row:** Woodrow Nelson, Ernest Christensen, Jarl Klockars, Phillip Strid, Wallace Christensen, Charles Garabedian, Lewis Nelson, James Hampton, Mr. Charles Peterson, director.

## VIKING BAND

<i>President</i> .....	CLIFFORD PALM
<i>Secretary</i> .....	JOHN EDWARD OLSON
<i>Librarian</i> .....	GERTRUDE TAPP
<i>Conductor</i> .....	MR. CHAS G. PETERSON

**T**HROUGH THE EFFORTS of Mr. Charles G. Peterson, the personnel of the Viking Band has increased from a few members to forty-eight musicians.

Throughout the football season the band played at the games.

In December, a band concert was given here at the high school and was pronounced a great success by the amazed listeners. The audience requested that a similar concert be presented again.

1  
9 Later in April, the Viking Band accepted an invitation to play at the Civic Auditorium in Fresno during Education Week.

3 The band also played in the city park during the noon hour of the May Day Fete.

4 The Viking Band also participated in the County Music Festival in Fresno.

At the Visalia Rodeo the band played in the parade that preceded it.

Under the capable leadership of Mr. Peterson the band has had a very successful year and has been active at all times in school activities.





THE  
 V  
 I  
 K  
 I  
 N  
 G

First Row: Lily Esajian, Bernice Sparks, Marguerite Rouch, Virginia Waggoner, Elizabeth Schreiber, Evelyn Swanson, Ruth Hanson, Sybil Hovanian.  
 Second Row: Edith Westlund, Pauline Johnson, LaVerne Bruce, Gladys Rosander, Clarice Erickson, Rosalie Renstrom, Luella Anderson, Nime Erickson, Miss Chaplin, director.  
 Third Row: Clara Eastlund, Rhoda Satterberg, Jacqueline Tapp, Gertrude Tapp, Ethel Nord, Dorothy Flood, June Crouser, Elizabeth Bjorklund, Marian Allvin.

## GLEE CLUB

<i>President</i> .....	JUNE KERN
<i>Vice-President</i> .....	FLORENCE WERNER
<i>Secretary</i> .....	CLARA EASTLUND
<i>Treasurer</i> .....	ETHEL NORD
<i>Librarian</i> .....	EMOGENE WIESE
<i>Reporter</i> .....	GERTRUDE TAPP
<i>Director and Advisor</i> .....	MISS ROSE CHAPLIN

**T**HE GLEE CLUB began the year's work enthusiastically. The members immediately elected officers and began work.

At the Christmas Program that was given on the evening of December 21, this club made its first appearance. The program consisted of a number of delightful presentations together with songs.

The operetta, "Ask the Professor," was given by the Glee Club and Chorus combined, on March 16. There was a very large cast in the operetta but under the able guidance of Miss Chaplin, together with the help of Miss Breed and Mrs. Nichols, the operetta was a grand performance. "Ask the Professor" was without a doubt the most successful operetta ever put on in this high school.

On May 13, the Glee went to Fresno to participate in the May Festival Program.

The last appearance was at the Baccalaureate and Commencement exercises.

The Glee Club owes much to Miss Chaplin for her untiring efforts in making this group a success in all of its undertakings.

1  
 9  
 3  
 4





**First Row:** Duane Paulsen, Jean Gustafson, Harriet Thrower, Marian Ratliff, Alice Hussian, Marjorie Alves, Alice Craveiro, Pauline Peterson, Evelyn Olson, Orpha Van Dell, Janice White, Barbara Ulrich, Erma Haworth, Walter Pinheiro.

**Second Row:** Pete Alves, Elvera Craveiro, Faybelle Dean, Nadine Stokes, Jean Erickson, Eleanor Broline, Phyllis Quist, Ruth Hultgren, Bertha Oneal, Eileen Swedell, Evelyn Jacobsen, Blanche Sward, Frances Rufert, William Carlson, Miss Chaplin, director.

**Third Row:** Homer Bengston, John Peterson, Paul Wiese, Dennis Orr, Clifford Sherman, John Gunnarson, Florence Werner, Alice Gustafson, Etta Kaiser, Helen Pazeian, Frances Loucks, Alvin Mellow, Paul Strand.

**Fourth Row:** Arthur Clark, James Lahann, Harold Roberts, Dilton Reynolds, Merritt McGahan, Lewis Nordstrom, Milfred Wall, Raymond Huddleston, Eugene Bjorklund, Harold Vandagriff, Harold Andrews, Edward Morine, George Rodgers.

## CHORUS

<i>President</i> .....	BERTHA ONEAL
<i>Vice-President</i> .....	PETE ALVES
<i>Secretary</i> .....	HELEN HANSON
<i>Reporter</i> .....	JOHN GUNNARSON
<i>Treasurer</i> .....	EILEEN SWEDELL
<i>Librarian</i> .....	ETTA KAISER

**T**HE SCHOOL YEAR OF 1933-34 marked the first year in the history of Kingsburg High that a chorus of girls and boys was formed. Election of officers took place two days after the opening of school and the organization began work in earnest.

The first of the year was spent in practising for the Christmas festival. It was a great success and proved a worthy result of the hard labor put into it.

The second appearance of the Chorus was in "Ask The Professor," the operetta given by the Glee Club and Chorus combined.

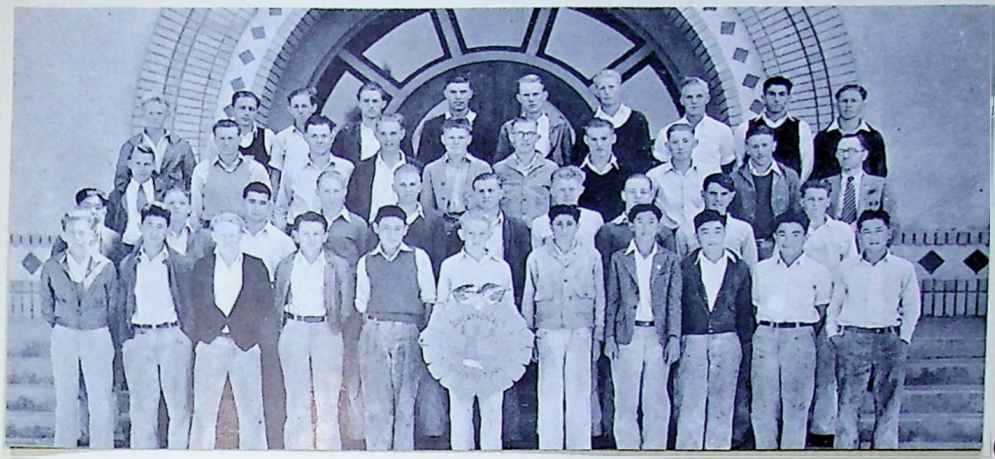
During Public School Week the Chorus took part in a program in the Fresno Auditorium.

The May Festival came next and the Kingsburg Chorus was among those that gathered in Fresno at Roeding Park. A very large crowd was present.



V  
E

V  
I  
K  
I  
N  
G  
S



First Row: Donald Galloway, John Deguchi, Charles Ratliff, Billy Ward, George Fukagawa, Bertil Hallsten, Avedik Avedikian, Kiyoski Hirano, Noburu Yoshimoto, King Ando, Jimmie Shintaker.

Second Row: Yutako Hirano, Clyde Howell, George Rodgers, Victor Anderson, Wallace Christensen, Roy Peterson, Raymond Anderson, Gordon Trank, Chester Galloway, Donald Brown.

Third Row: Dale Brewer, Lorin Vaughan, Dale Vaughan, Walter Westerberg, Walter Sadonko, Vensel Swenson, Phillip Strid, Harry Jewell, Clifford Palm, Mr. M. A. Schreiber.

Fourth Row: Elton Melin, Clifford Sherman, Carl Wendling, Arthur Clark, Howard Sward, Eugene Bjorklund, Lester Bergman, Ernest Christensen, Charlie Goorigian, Everett Samuelson.

### F. F. A.

President.....	CLIFFORD PALM
Vice-President.....	HOWARD SWARD
Secretary.....	ELTON MELIN
Treasurer.....	CARL WENDLING
Reporter.....	EVERETT SAMUELSON
Advisor.....	M. A. SCHREIBER

A SUCCESSFUL YEAR has been enjoyed by our 45 members. On December 18 we initiated a large group of Freshmen into the Greenhand degree and they have proved worthy members.

Arthur Christenson was awarded the State Farmer degree, being one of the eighteen boys selected from the entire state. Howard Sward received first prize for the best poultry project in the San Joaquin Valley, receiving 250 baby chicks awarded by R. E. Nelson, Kingsburg hatcheryman.

Light and heavyweight basketball teams were organized and matched against other F. F. A. teams. The lightweights won the championship.

The members and the advisor actively cooperated in the A. A. A. campaign to reduce production of cotton and hogs and also in vine-hopper control work and in numerous other rural problems.

The F. F. A. sponsored the annual May Fete on April 27.

The local chapter has been selected as one of the ten in the valley eligible for the State Chapter Contest which culminates on June 30.

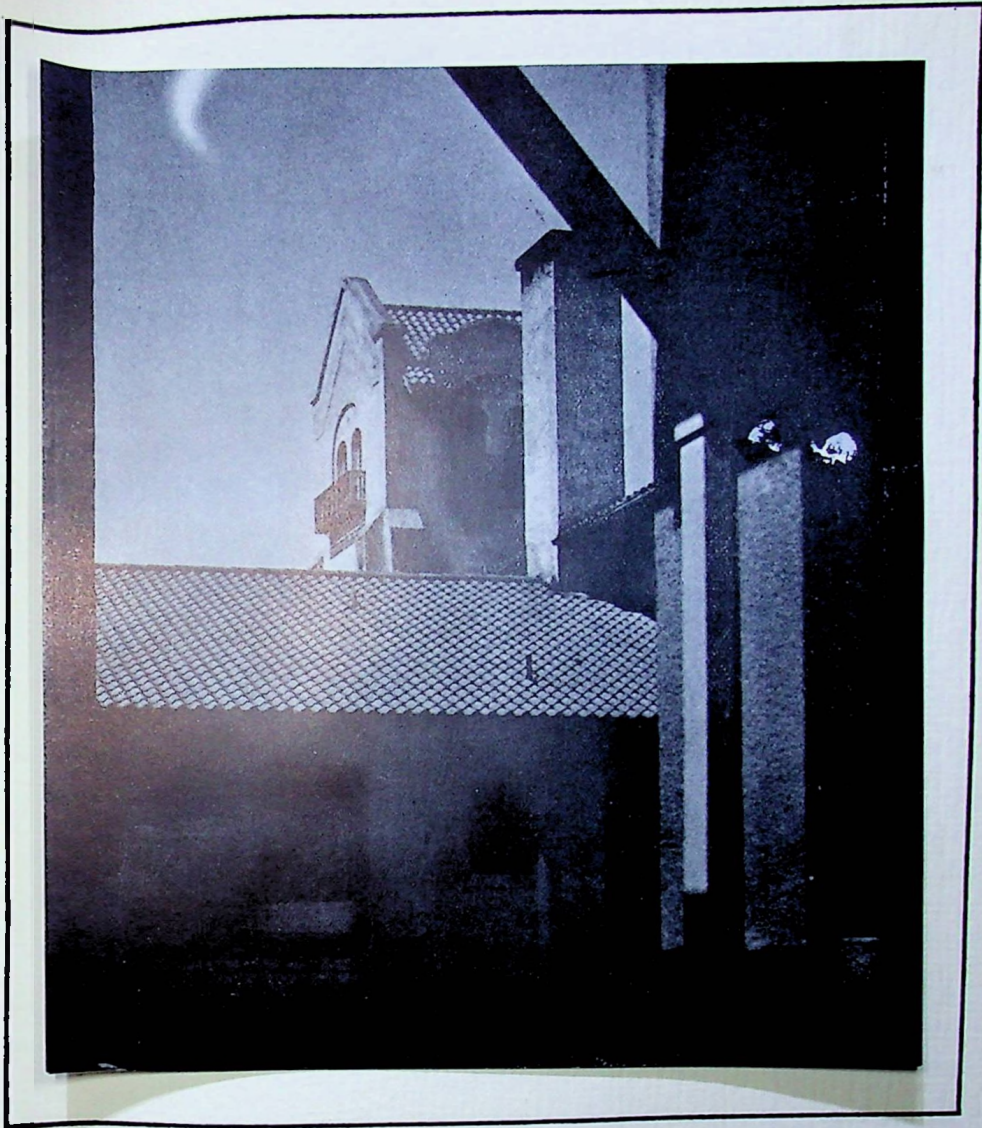
9  
3  
4



# ACTIVITIES

---





*In visions unnumbered, and  
Pleasures untold,  
We love thy dear colors,  
The Green and the Gold.*



## 1934 VIKING



Top to Bottom: Herman Olsen, Bertha Oneal, Dorothy Patz, June Kern, Ruth Lundberg.

In preparing the 1934 Viking, the staff met with many difficulties. The book, in unconventional style, is a radical departure from the usual run of annuals and for that reason presented a number of difficulties in make-up. The staff of this year had no precedent to follow as staffs of past annuals had. This year the staff worked on something entirely new to this locality.

The tipped-in, French fold pages are both unique and attractive. The cover this year is different from any other cover used anywhere. The four-ply monastary crash cover was secured for this school exclusively and was, in fact, invented for our very purpose.

The division pages are unlike any ever before found in a Viking annual.

This book, characterized by beauty of make-up from start to finish, is the result of painstaking work on the part of the staff.

The co-operation of the business men of the town was a big factor in the production of the 1934 Viking.

Commendation is due the staff for their persevering effort in making this 1934 Viking the finest ever produced.



Rousas John  
Rushdoony



Miss Elsa  
Kraeger



## STAFF

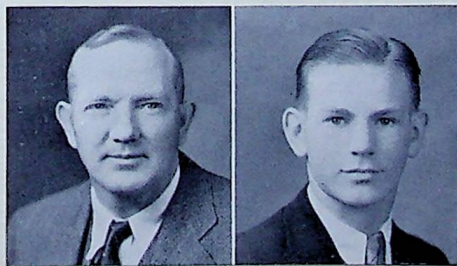
The staff gratefully acknowledges the help it has received in the preparation of this book. The co-operation afforded the staff by the administration and the faculty is appreciated.

The guidance of our advisors, Miss Kraeger and Mr. Bunger, has been instrumental in the success of this book.

The kind advice and help given Mr. L. Kemalyan of the Fresno Photo-Engraving Company has been invaluable to the staff.

The helpful suggestions made by Mr. Clarence L. Parks of Parks Studio in Fresno are appreciated by the staff.

The staff is as follows: Editor-in-chief, Rousas John Rushdoony; Business Manager, Walter Anderson; Assistant Business Manager, June Kern; Advertising Manager, Rousas John Rushdoony; Assistant Advertising Manager, Bertha Oneal; Organization Editor, Tulla Staples; Calendar Editor, Eileen Hallsten; Historian, Frances Rufert; Girls' Sports Editor, Dorothy Patz; Boys' Sports Editor, Charles Schaffer; Snapshot Artist, Ruth Lundberg; Snapshot Editor, Richard Forsblad; Humor Editor, Herman Olsen.



Mr. William Bunger

Walter Anderson



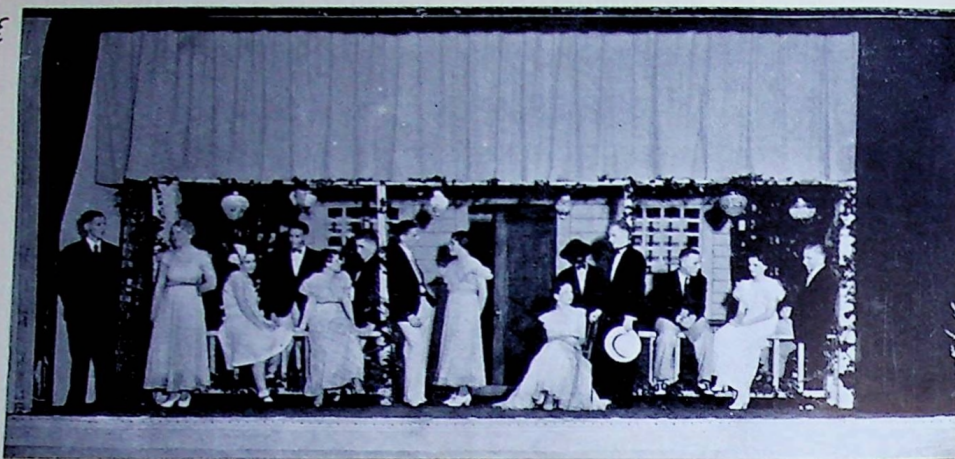
Top to Bottom: Tulla Staples, Eileen Hallsten, Richard Forsblad, Frances Rufert, and Charles Schaffer.

THE  
V  
I  
K  
I  
N  
G

1  
9  
3  
4



VE  
V  
I  
K  
I  
N  
G



Lyle Martin, LaVerne Bruce, Marguerite Rouch, Richard Mack, Betty Bonesteel, Wendell Catlin, Eldon Erickson, Verna Hanson, Margaret Shellstrom, Homer Bengston, William Schneider, Brooks Johnson, Dorothy Petersen, Lewis Nelson.

## “SEVENTEEN”

- |                             |                   |                           |                     |
|-----------------------------|-------------------|---------------------------|---------------------|
| <i>W. S. Baxter</i> .....   | William Schneider | <i>Wallie Banks</i> ..... | Lewis Nelson        |
| <i>Mr. Baxter</i> .....     | Richard Mack      | <i>Jane Baxter</i> .....  | Marguerite Rouch    |
| <i>Joe Bullitt</i> .....    | Eldon Erickson    | <i>Lola Pratt</i> .....   | Margaret Shellstrom |
| <i>Genesis</i> .....        | Homer Bengston    | <i>May Parcher</i> .....  | Betty Bonesteel     |
| <i>Johnnie Watson</i> ..... | Wendell Catlin    | <i>Ethel Boke</i> .....   | LaVerne Bruce       |
| <i>George Crooper</i> ..... | Brooks Johnson    | <i>Mary Brooks</i> .....  | Dorothy Petersen    |
| <i>Mr. Parcher</i> .....    | Lyle Martin       | <i>Mrs. Baxter</i> .....  | Verna Hanson        |

ON FEBRUARY 16, THE JUNIOR CLASS, under the direction of Mrs. Emma Nichols, presented “Seventeen,” Booth Tarkington’s comedy of youth.

Willie Baxter in “Seventeen” tries to convince his parents of the necessity for a dress suit. When Lola Pratt, the “baby talk” girl, comes to stay with the Parchers, all the boys in town vie with each other for the favors of Lola Pratt. Willie’s sister, little Jan, makes life miserable for Willie with her teasing and her everlasting consumption of bread, spread with butter, apple-sauce and sugar. Mr. and Mrs. Baxter try vainly to understand Willie, who frequently speaks on the topic of marriage. When his pleas for a dress suit are disregarded, Willie “borrows” his father’s dress suit, unknown to his parents.

In the end, Willie fails to hold Lola’s fickle heart when Wallie Banks, who is the proud owner of a car, steps into the picture. Disappointed in love, Willie meekly listens to his parents and decides to go to college rather than get married.



V  
I  
K  
I  
N  
G



**"ASK THE PROFESSOR"**

<i>Emily Lee</i> .....	<i>Phyllis Quist</i>
<i>Maryda Oneal</i> .....	<i>Gladys Rosander</i>
<i>Prof. Will Breakaway</i> .....	<i>Raymond Huddleston</i>
<i>John Ainsworthy</i> .....	<i>Harold Vandagriff</i>
<i>June Ainsworthy</i> .....	<i>Marguerite Rouch</i>
<i>Polly</i> .....	<i>June Crouser</i>
<i>Red Oneal</i> .....	<i>John Gunnarson</i>
<i>Helen</i> .....	<i>Helen Hanson</i>
<i>Bertha</i> .....	<i>Bertha Oneal</i>
<i>LaVerne</i> .....	<i>LaVerne Bruce</i>
<i>Mrs. Oneal</i> .....	<i>Virginia Johnson</i>
<i>Tommy Freshman</i> .....	<i>William Carlson</i>

*Chorus of boys and girls*

**T**HE GLEE CLUB and the Chorus presented their annual operetta on March 16 under the direction of Miss Rose Chaplin. The story takes place on the campus of a fashionable girls' school.

John Ainsworthy, a wealthy college senior, decides to send the poor but pretty Maryda Oneal, daughter of a laundress, through school. Knowing she will refuse him if makes the offer, he pretends that it is a wealthy aunt of his who will pay her way through. Maryda accepts and enters the school. In one year's time she amazed everyone with her splendid work. She is crowned Queen and is to preside over the Commencement Ball. However, an ancient ruling of the school requires a chaperon to be present and John's aunt is expected to be the chaperon. When John's subterfuge is discovered, his invitation is recalled and his sister, June, is not permitted to chaperon Maryda. Maryda indignantly leaves for home. Mrs. Oneal comes and meets Prof. Will Breakaway, who is completely surprised at her unexpected poise and charm. In the end, Maryda is brought back and John and June forgiven and all ends happily.

1  
9  
3  
4



V  
I  
K  
I  
N  
G



Walter Anderson, Harvey Peterson, John Gunnarson, Frances Loucks, William Carlson, Eileen Hallsten, Edgar Dunn, Helen Hanson.

### "TWEEDLES"

<i>Mrs. Rickets</i> .....	Helen Hanson
<i>Mr. Albergone</i> .....	Gertrude Tapp
<i>Winsora</i> .....	Eileen Hallsten
<i>Julian</i> .....	Edgar Dunn
<i>Mrs. Castlebury</i> .....	Frances Loucks
<i>Mr. Castlebury</i> .....	John Gunnarson
<i>Adam Tweedle</i> .....	Harvey Peterson
<i>Ambrose</i> .....	Walter Anderson
<i>Philemon</i> .....	William Carlson

"**T**WEEPLES," A PLAY written by Booth Tarkington and Harry Leon Wilson, was presented by the Senior class on May 25 under the direction of Mrs. Emma Nichols.

The story centers around the Tweedle family who live in a town well-known as a summer resort. The Tweedles run the "Antiquity Shop and Tea Terrace" in the old Tweedle mansion. Julian Castlebury, the dreamy son of a wealthy man from the city, falls in love with pretty Winsora Tweedles. On attempting to propose to her, he runs into difficulty in the form of the rest of the Tweedle family.

1  
9  
3  
4

Mr. and Mrs. Castlebury are opposed to the marriage and visit the Tweedles to discuss the matter. When the Castleburys and the Tweedles both discover that the objection of the other family is that they think them to be inferior, each becomes offended. Julian wins the sympathy of Mrs. Albergone, also a Tweedle. She is instrumental in convincing the two families that they are wrong in trying to restrain Winsora and Julian, who by this time is a wide-awake young man. The play ends happily, with Julian and Winsora successfully weathering parental objections.



## MISCELLANEOUS PLAYS

### "GREAT CAESAR"

<i>Julius Caesar</i> .....	Harvey Peterson
<i>Calpurnia (Mrs. Caesar)</i> .....	Helen Hanson
<i>Mark Anthony</i> .....	John Gunnarson
<i>The Mob</i> .....	Brooks Johnson
<i>Portia (Mrs. Brutus)</i> .....	Bertha Oneal
<i>Mr. Trebonius Lepopidus Augustus Marcus Decius Brutus</i> .....	Walter Anderson
<i>Sam</i> .....	Robert Scott
<i>Crowd</i> .....	Forensic students

"GREAT CAESAR!", a hilarious one act play, was presented to the student body by the Forensic class. "Great Caesar!" is a burlesque of William Shakespeare's "Julius Caesar." With undeniably clear and forceful humor, "Great Caesar!" beggars description. The audience roared with laughter from start to finish.

The following lines picked at random, give an idea of what the play was like. Calpurnia, Caesar's spouse, on finding her husband killed, bemoans the fact by declaring, "He was the best husband I ever had!"

Mark Antony, a politician of the derby-hat type, on seeing Caesar's dead body, remarks, "Poor Caesar. He ain't what he used to be!"

Caesar, himself, who plans to run for king at the next election on the Democratic ticket, miraculously comes to life, after having been stabbed, in a crucial moment to interfere with Mark Antony's famous oration.

The play was directed by Mrs. Emma Nichols.

### "A MESSAGE FROM KHUFU"

<i>Professor Arthur Hardin, Archeologist</i> .....	Harold Vandagriff
<i>Herman</i> .....	Eldon Erickson
<i>Butch</i> .....	Wendell Catlin
<i>Ben</i> .....	William Schneider

"A MESSAGE FROM KHUFU" is a well-known one act play by H. Stuart Cottman and Le Vergne Shaw. The scene takes place in a heretofore undiscovered tomb in the Valley of Kings in Egypt.

Professor Arthur Hardin, a cruel natured man who is grossly jealous of the fame of his superior, Professor Britling, discovers the tomb of Khufu, an Egyptian ruler of the earlier dynasties.

ME  
V  
I  
K  
I  
N  
G

1  
9  
3  
4



Threatening to disclose the fact that they are all deserters from the French Foreign Legion if they reveal the discovery, the professor compels three desert rats to enter the tomb with him in the dead of night.

On the surface of the sarcophagus which contains the body of Khufu is a solemn warning to all desecrators of his tomb.

Despite the protestations of the cowardly deserters, the professor opens the lid of the coffin. In the hand of Khufu, they discover an emerald of fabulous worth. Butch and Herman forget their fear and quarrel with Professor Hardin, who declares he will pay them no more than fifty dollars for their night's work. Butch and Herman insist that they must share the emerald. The weak-willed Ben hangs back. A fight ensues and the Professor is stabbed to death by Butch.

Suddenly and unexpectedly, the stone door, the only entrance to the underground tomb, closes. When all attempts to open it prove of no avail, the men become panic-stricken.

Butch dies a weird death while probing the remains of Khufu. Herman, inquisitive as to the reason of Butch's death and led by avarice, examines the coffin further in hopes of finding another emerald. He is suddenly stricken by the same unearthly death.

Ben, left entirely alone, begins to get hysterical at the thought of the slow death awaiting him. In a wild out-burst of fear, he replaces the cursed emerald in its original position. The door opens mysteriously. The whining wind brings Ben to his senses, and he flees madly from the scene.

#### "MY COUSIN FROM SWEDEN"

<i>Karena</i> .....	Junice Benson
<i>Charlotte</i> .....	Frances Loucks
<i>Ann</i> .....	Alice Rosander
<i>Hilda</i> .....	Judith Alen
<i>Jeanette</i> .....	Astrid Brask
<i>Mae</i> .....	Eileen Hallsten
<i>Gladys</i> .....	Evelyn Swanson

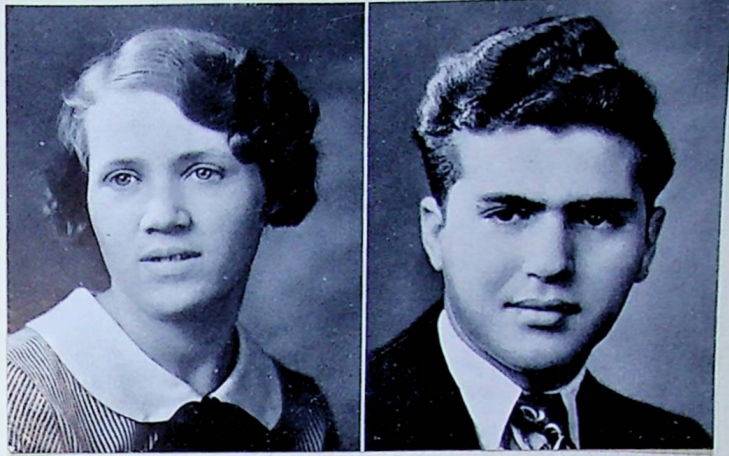
"MY COUSIN FROM SWEDEN," a one act play with an all-girl cast written by Katherine Kavanaugh, was presented late in the year.

Charlotte and Ann, a pair of attractive young American girls, fearfully await the coming of Jeanette, their cousin from Sweden.

Jeanette arrives with her maid, Hilda. She is an attractive girl of eighteen who speaks perfect English. Before entering, she overhears her cousins discussing her. She determines to act like an ignorant girl and to speak in dialect in order to scare her cousins into thinking she will be a hindrance to them. She succeeds in doing so.

In the end, Jeanette discloses her true self and everything is adjusted to everyone's satisfaction.





Verna Hanson

Rousas John Rushdoony

THE  
V  
I  
K  
I  
N  
G

## FORENSIC ACTIVITIES

THE FORENSIC CLASS this year produced two plays, "Great Caesar" and "My Cousin from Sweden," under the direction of Mrs. Emma Nichols. These plays were presented to the student body by the Forensic Class. The class also presented another program to the assembly.

The local high school, with the Forensic students taking a leading part, played host to the contestants in the valley extemporaneous speaking contest.

Kingsburg entered in the extemporaneous reading contest. Twelve students competed in the try-outs.

Verna Hanson, a Junior, was selected as the girl representative for Kingsburg, and Rousas John Rushdoony, a Senior, was selected as the boy contestant.

The division extemporaneous reading contest was held in Selma. Reedley, Washington Union, Selma and Kingsburg each had a boy and a girl entry. Rousas John Rushdoony was first in the boys' contest.

Two weeks later, on April 17, the county extemporaneous reading contest was held in Fowler. Boy and girl winners from the four divisions competed.

Rousas John Rushdoony again won first place to bring the championship in the boys' contest to Kingsburg.

1  
9  
3  
4



# CALENDAR

## SEPTEMBER

- 25—School opens and its back to the old grind.  
26—Freshmen-Sophomore Brawl. Brawl a tie. Did somebody get wrecked?

## OCTOBER

- 13—First football game with Reedley. Kingsburg wins, 12-0.  
13—Freshmen Reception. Seniors play hosts.  
19—Lightweight football game with Selma. Selma wins.  
20—Football game at Sanger. Little fellows in Sanger walk all over the big Vikings.  
26—Volleyball. Kingsburg loses to Selma, 3-0.  
27—Selma crushes Kingsburg's football hopes.  
27—Girls' League party.  
28—Lightweight football team gives Lemoore a hard battle but loses.  
31—Hallowe'en Fun Parade.

## NOVEMBER

- 2—Volleyball game with Laton. Kingsburg wins, 3-0.  
2—Lightweight gridders lose to Reedley.  
3—Lemoore Tigers get surprise when the lowly Vikings show fight in football game. Lemoore wins in the fourth quarter, 6-0.  
3—Senior Party. Pie-eating contest a big hit with everyone.  
9—Riverdale defeats girls' volleyball team, 3-0.  
10—Interclass lightweight football game. Sophomores are beaten by Junior-Senior-Freshmen team, 13-6.  
15—Interclass girls' volleyball games. Seniors defeat Juniors and Sophomores win from Freshmen.  
17—Interclass heavyweight football game. Seniors smother the rest of the school.  
24—Interclass volleyball play-off. Seniors trounce Sophomores.  
30—Turkey Day football game. High School varsity loses to alumni by narrow margin.  
24—to December 4. Thanksgiving Vacation.

## DECEMBER

- 18—Ag Club initiates greenhands.  
18—German Club party.  
20—"Great Caesar" presented to assembly. Many laughs provoked.  
20—Girls' League Children's party.  
21—Glee Club and Orchestra concert.  
22—to January 2, Christmas vacation.



JANUARY

- 12—Basketball game with Fowler. Kingsburg A Class wins, 30-29, in two overtime periods. Pass the aspirin tablets. V
- 20—Kingsburg wins all three games against Coalinga. Miracles still happen! I
- 26—Lemoore beats all three basketball teams and kills championship hopes. Don't cry, boys. Are we not men? K

FEBRUARY

- 3—Reedley also defeats heavies in hoop contest. All Viking middle-weights but three out on fouls. Three iron men! I
- 12—Selma loses to Kingsburg and the boys feel better. End of basketball season. N
- 16—Juniors present "Seventeen." G

MARCH

- 2-4—Hi-Y Clubs attend Valley Conference at Roosevelt High in Fresno.
- 16—Operetta, "Ask the Professor," produced by Glee Club and Chorus.
- 23—Reedley wins in opening baseball game but displays poor sportsmanship and breaks up game twice. Commission discredits Reedley victory.
- 27—Fresno State Band and Glee Club give concert at high school.
- 30—Kingsburg defeats Washington Union in twelve innings, 4-3.

APRIL

- 3—Steak Bake at Bear Pit. The teachers bark like coyotes.
- 6—Juniors hold party and play childins games, so they naturally have a good time.
- 7—Kingsburg smothers Sanger, 17 to 1, in baseball game.
- 10—Verna Hanson and Rousas John Rushdoony compete in Division Extemporaneous Reading Contest. Rushdoony wins.
- 14—Nervous Vikings drop game to Reedley, 4-1.
- 17—Seniors have Dress Up Day. Juniors are jealous.
- 17—Rushdoony wins county Extemporaneous Reading Contest.
- 21—Washington Union again loses, 4-3, as Vikings lead division.
- 27—Kingsburg defeats Sanger, 6-1, as Wiese continues sensational strike-out record with 14 more. Sanger gets only two hits.

MAY

- 9—Annual Staff presents program and play, "A Message From Khufu." I
- 11—G. O. S. League girls give party in honor of their mothers. 9
- 18—Sophomores hold party.
- 25—Senior play, "Tweedles," presented. 3

JUNE

- 1—Junior-Senior Banquet. 4
- 3—Baccalaureate services.
- 7—Commencement exercises and sad parting from scene of four years of happy fellowship.



ATHLETICS

---





*When all through the future  
Where e'er we may go,  
We dream of the days of  
The Green and the Gold.*



WE

V

I

K

I

N

G

## SPIRIT OF ATHLETICS

*"Win if you can; lose if you must—but play the game."  
That is the spirit of athletics.*

*That short and pithy sentence embodies the whole purpose of athletics. The purpose of the high school athletic program is not only to teach the boys to be good football, baseball, basketball and track athletes; its aim is not only to make girls skilled tennis and volleyball players. That is all very well. But the real purpose of the high school athletic program is to teach boys and girls sportsmanship, to teach them how to be a graceful victor and a cheerful loser, to teach them to play fair no matter what happens, and, last but by no means least, to teach them to keep on trying even when the battle seems hopeless. If they learn those things, and we believe they do in Kingsburg High, they are more fit for life than if they simply learned a good drive in tennis or won a football championship. It's not what you win but how you win it that counts. "Play the game." That's the thing!*

1

9

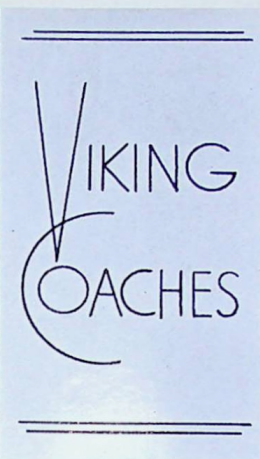
3

4





Coach Larson



Coach Bungler

## VIKING COACHES

WHEN COACH WILLIAM M. BUNGER assumed his duties as Viking mentor back in 1926, the Viking teams were classed among the smaller and weaker ones of the county.

In the eight years that have passed, the Vikings have achieved a fixed position among the leading athletic contenders in Fresno county. The Viking football record in the last eight seasons is one of the best. The basketball teams have been consistently good. Many outstanding track men have been developed. In baseball, the national pastime, a number of championship teams have been turned out from Kingsburg High. The trophy case is crowded with cups and awards won by our many championship teams.

But more important than the numerous championships won, the Vikings have been thoroughly grounded in the principles of good sportsmanship.

When Miss Larson began as girls' coach last fall, she immediately issued a call for volleyball players. A large number of girls responded. After considerable practice and careful selection, a squad was finally chosen from many candidates. The girls had a good season and enjoyed themselves immensely.

The girls' indoor baseball team also met with a certain degree of success. The girls played good baseball and the season proved to be great fun for all the girls.

For the success of the Green and Gold in the past year, an inestimable amount of credit is due to the two coaches, Miss Larson and Mr. Bungler.

1  
9  
3  
4





**FIRST STRING**

First Row: Captain Walter Anderson, Harry Strid, Jarl Klockars, Arthur Clark, Wendell Catlin, Harvey Peterson, Robert Davidson.

Second Row: Coach Bunger, Clifford Palm, Roy Dahl, Edgar Dunn, Ernest Christenson, Clifford Ericson, Clifford Sherman. (Williamn Carlson, Charles Schaffer, also on first string, not in picture).

**HEAVYWEIGHT FOOTBALL**

**SQUAD**

First Row: Captain Walter Anderson, Fred Kern, Floyd Haskell, Arthur Clark, Wendell Catlin, Harvey Peterson, Clifford Ericson, Clifford Palm, Clifford Sherman.

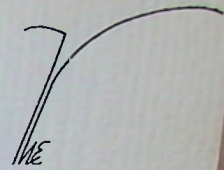
Second Row: Roy Dahl, Edgar Dunn, Ernest Christenson, Brooks Johnson, Eldon Erickson, Glenn Kolander, John Hovhannesian, Lewis Nelson, Verne Carlstrom, Roland Croft.

Third Row: Roscoe McKenry, Henry Kaiser, Phillip Strid, Coach Bunger, Robert Davidson, Jarl Klockars, Harry Strid, Herbert Flood, Richard Mack, Manager Arthur Christenson.





## HEAVYWEIGHT FOOTBALL



"THE FATES DECREED that the Vikings should lose this year. Thrice the Green and the Gold went down in defeat. Yet how the lost! Fighting gallantly and stubbornly to the last, the Vikings, great in victory, were even greater in defeat. Although it was apparent that the crippled condition of the squad was responsible for their failure, the Vikings never whimpered or made any excuses for the frequently contrary score. Despite the fact that the record book speaks otherwise, the 1933 team is one to be proud of."

In the above terms, the Kingsburg Recorder praised the heavyweight football team for their performance during the past season. And correctly so. Although it was common knowledge that the unusual number of injuries was responsible for their lack of success, the Vikings sought no refuge behind that fact. They continued to fight even to the end and almost succeeded in upsetting the highly touted Lemoore Tigers in one of the most surprising games of the year.

In the season's opener at Kingsburg, the Vikings faced the Reedley Pirates. After four quarters of hard play, Kingsburg emerged victor, 12 to 0. In this game the Vikings displayed one of the best passing attacks ever seen at the local gridiron. Eight passes were completed in fourteen tries with an average of fifteen yards on completed passes.

Minus three varsity men, the Vikings lost to Sanger in the second league game.

With four more players injured during the course of the Selma game, Kingsburg fell before the onslaught of the Selma Peach Pickers. The game was a tie until the middle of the third quarter, when Selma backfield men broke loose and the weary Vikings lacked reserve power to hold them.

The final game was with Lemoore, a team widely heralded for its roster of sensational players. But for three and a half quarters the Lemoore Tigers failed to click until the last few minutes of the game. The gun stopped a Viking march down the field to close the best grid scrap of the year.

At the close of the season, nineteen players were awarded letters. Two of them, Arthur Clark and Harry Strid, received letters for the third time. Walter Anderson, William Carlson, Wendell Catlin, Robert Davidson, Edgar Dunn, Jarl Klockars, Clifford Palm, Harvey Peterson and Charles Schaffer have been awarded letters twice. The following were first-year letter winners: Ernest Christenson, Roy Dahl, Clifford Ericson, Fred Kern, Glenn Kolander, Richard Mack, Clifford Sherman and Phillip Strid.

Of the above players, only six will return next year.

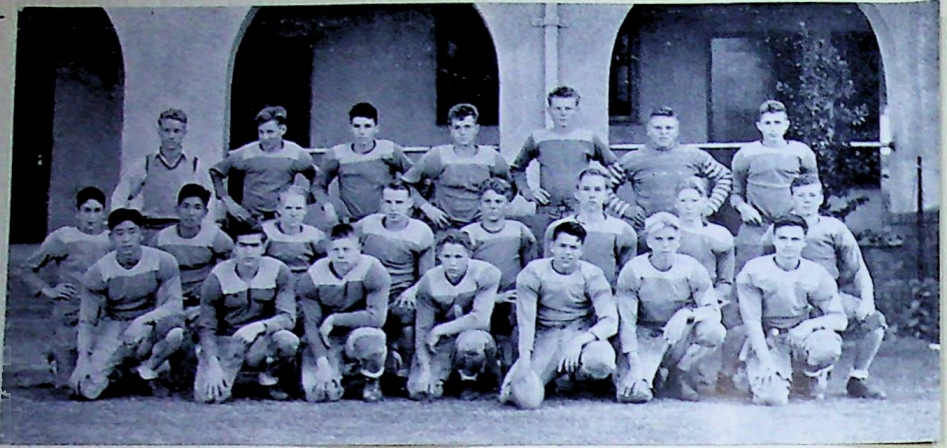
October 13	Kingsburg—12	0—Reedley
October 20	Sanger—20	6—Kingsburg
October 27	Selma—24	6—Kingsburg
November 3	Lemoore—6	0—Kingsburg

V  
|  
K  
|  
N  
G

1  
9  
3

4





First Row: Toshio Ezaki, Rousas John Rushdoony, Burnett Olson, Robert Howell, Conrad Kolander, Wallace Christenson, Kenneth Pearson.  
 Second Row: Warren Hovnanian, Yoshito Yamada, Clarence Lindstrom, Dale Brewer, Woodrow Nelson, David Wenall, Jack Larson, Lawrence Nelson.  
 Third Row: Assistant Coach Earl Linman, Herman Olsen, Harold Roberts, Warren Norman, Walter Sadonko, Stanley Lindstrom, Orville Burgeson.

## LIGHTWEIGHT FOOTBALL

*ALTHOUGH DEFEATED* in all three contests, the lightweight football team closed the season with the record of having given each opponent one of its toughest battles.

With an invincible line and a fast-moving backfield, the lightweights would have gone far but for the fact that they were helpless defensively on end runs. It was through this department of play that every major gain against the Viking limited team was made by their opponents. The Kingsburg Babes were woefully weak on end runs by the opposing team and this failing spelled failure for them.

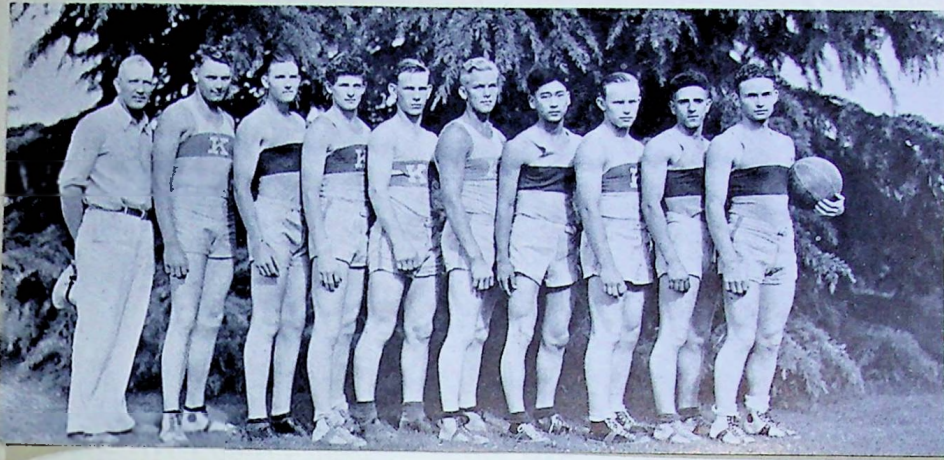
The games played were with Selma, Lemoore and Reedley.

Considering that only four regulars from last year's team were on hand, the team was successful and should furnish good material for the heavyweight as well as lightweight team next season.

The four regulars from last year who played again this season were Ezaki, Rushdoony, Olson and Pearson. Ezaki has played for three years. Norman, Yamada, Brewer and Howell also played last season but were not regulars.

The lightweight football team was coached by Earl Linman, former lightweight star, who kindly consented to assist Coach Bunger.





VE  
 V  
 I  
 K  
 I  
 N  
 G

Coach Bunger, Jarl Klockars, Harvey Wilson, Clifford Ericson, Walter Anderson, Ernest Christensen, Toshio Ezaki, Roy Dahl, Pete Alves, Edgar Dunn.

## HEAVYWEIGHT BASKETBALL

**A** STRONG A CLASS aggregation was formed this year by Coach Bunger.

The Vikings closed the season with three victories and two defeats. In a pre-season game with Dinuba, runner-up for the valley championship, the Viking quintet defeated that team by a score of 32 to 28.

Kingsburg met Fowler in the opening game of the season. The Vikings trailed for two and a half quarters but began to click late in the third quarter. The game ended tied at 26 all. It required two over-time periods for Kingsburg to defeat Fowler, 30 to 29.

Coalinga lost to Kingsburg in the second game. The Vikings were never seriously threatened and always sustained a good-sized margin over the oil-town team.

Little Bill Tuzzi, a Lemoore substitute, went on a rampage in the Lemoore game, scoring 18 points to lead the Lemoore Tigers in a victory over the Vikings.

For two quarters, Kingsburg threatened to defeat Reedley in that game and throw the league into a three-cornered tie. But in the second half of play, the Vikings failed to coordinate and scored only one point in the entire last half of play.

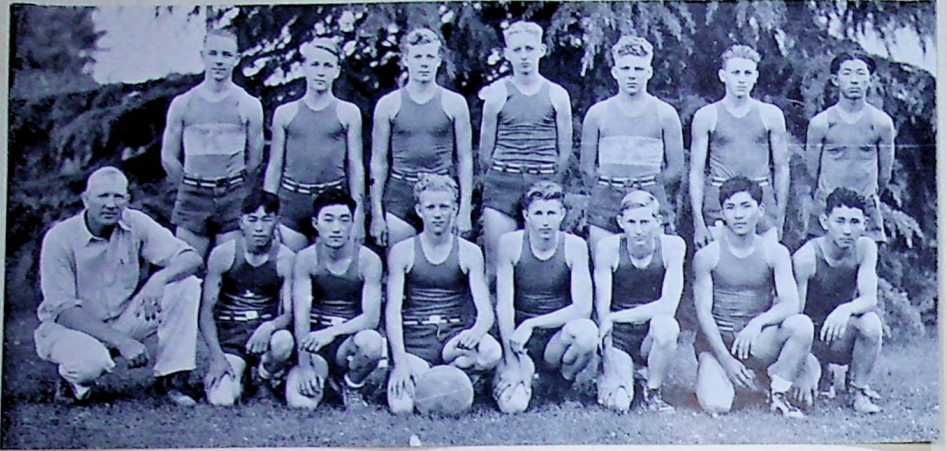
Kingsburg defeated Selma in the final game of the season.

The following boys won letters: Edgar Dunn, Clifford Ericson, Roy Dahl, Jarl Klockars, Walter Anderson, Fred Kern, Wendell Catlin, Toshio Ezaki, Lewis Gruenwald, and Milford Bengston.

Kingsburg—30.....	29—Fowler
Kingsburg—33.....	22—Coalinga
Lemoore—30.....	26—Kingsburg
Reedley—40.....	16—Kingsburg
Kingsburg—36.....	30—Selma

1  
 9  
 3  
 4





**LIGHTWEIGHT BASKETBALL TEAM**

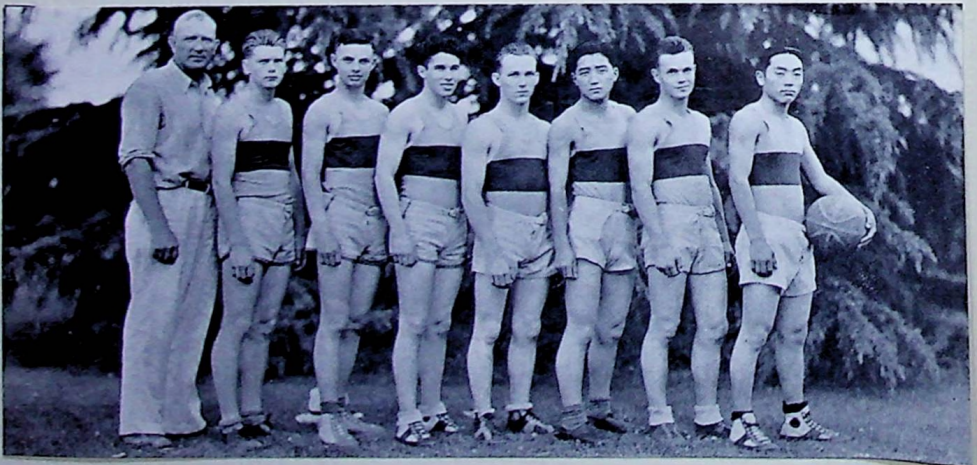
**Standing:** Gordon Trank, Forrest Carlstrom, Lawrence Nelson, Victor Anderson, Woodrow Nelson, Donald Brown, Kiyoshi Hirano.

**Kneeling:** Coach Bunger, Kay Matsuoka, Noboru Yoshimoto, John Edward Olson, Orville Burgeson, Manfred Hillblom, Yoshito Yamada, John Deguchi.

**BASKETBALL**

**MIDDLEWEIGHT BASKETBALL TEAM**

**Coach Bunger, Leslie Hard, Kenneth Pearson, Harold Roberts, Paul Pettigrew, Tokio Nomura, Warren Norman, Harry Nakata.**





## LIGHTWEIGHT BASKETBALL

LIVING UP TO TRADITION, the Kingsburg lightweights lost the division race through a momentary weakness for the third year straight. For three successive years the Viking Babes have suddenly faltered in the latter part of a game to lose the contest as well as their chance for the championship.

After running up a string of sensational pre-season victories, including several over middleweight teams, the lightweights met Fowler in the first game of the league schedule. The entire squad participated in the 25-3 victory over the Fowler Red Cats. The following week the Kingsburg lightweights overwhelmed Coalinga.

In the Lemoore game, the lightweights had the Lemoore five apparently defeated in the first half. However, the Vikings were a little too sure of themselves and the Lemoore team took advantage of the situation and jumped to a big lead. The Babes started working fast in the final minutes of play but started too late, for the gun cut off a surge of their usual style of play.

Reedley also succumbed to the Vikings, as did Selma, but the damage had been done and the Vikings had to be content with second place.

The score of league games are:

Kingsburg—25	3—Fowler
Kingsburg—24	14—Coalinga
Lemoore—22	17—Kingsburg
Kingsburg—23	12—Reedley
Kingsburg—21	15—Selma

## MIDDLEWEIGHT BASKETBALL

As usual, the middleweight squad was the weakest one of the trio of Viking basketball teams.

The Viking middleweights lost four games and won only one, and that one, strangely enough, from a fairly good team.

The middleweights were a potentially good team, but a lack of scoring punch kept them from going far.

Nevertheless, they were a good drawing card and frequently "stole the show" with their surprising plays.

Scores of league games are as follows:

Fowler—38	21—Kingsburg
Kingsburg—15	12—Coalinga
Lemoore—30	15—Kingsburg
Reedley—29	18—Kingsburg
Selma—29	14—Kingsburg

V

V

|

K

|

N

G

|

9

3

4





First Row: Leroy Giannini, Kiyoshi Hitano, Orville Burgeson, Rex Turner, Warren Hovnanian, Dale Turner, Yoshito Yamada, James Hampton, Robert Diehl.  
Second Row: Walter Sardonko, Andrew Deranian, Edgar Dunn, Paul Kleinsasser, John Peterson, Coach Bunger, Warren Norman, Gordon Trank, Richard Mack, Wendell Catlin.

## TRACK

**D**UE TO THE LATE baseball season, the track season in Kingsburg began late in April this spring. Toward the latter part of April, the largest track meet of the year was held in the Rose Avenue Field. Over 600 track and field contestants from more than 20 schools from all parts of the valley met in an afternoon of closely competed events at Selma.

Kingsburg was able to take only a small team composed of eight men. Regardless of the size of the team, Kingsburg scored seventeen points to take seventh place in the list of upward of twenty schools that competed.

In the A Class, Wendell Catlin and Edgar Dunn placed for Kingsburg while Warren Norman placed in the B Class.

Catlin won fourth place in the discus and then took second place in the shot-put, his favorite event. Hollbrook of Lemoore, the shot-put champion, defeated Catlin in that event.

1  
9  
3  
4  
With a heave of 176 feet, Dunn won first place in the football throw. Dunn was apparently the winner in the hop-skip-and-jump until Weinman of Tulare exceeded his mark by a single inch on his final try. Dunn was third in the broad jump.

Warren Norman was a close second in the B Class football throw.

As the annual goes to press, the Vikings are preparing for the county track meet on May 6. With every indication that a revival of former track glory is on the way, the Vikings have entered a complete team in the meet.





First Row: Homer Bengston, Rex Turner, Warren Norman, Lewis Nelson, Harold Roberts, Toshio Ezaki, Rueben Dahlgren, Eldon Erickson, Donald Brown.  
 Second Row: Coach William M. Bunger, Kenneth Pearson, Edgar Dunn, Lewis Nordstrom, Clifford Ericson, Walter Westerberg, Jarl Klockars, Walter Anderson, Paul Wiese, Roy Dahl, Wendell Catlin, Douglas Wilson.

VE  
 V  
 I  
 K  
 I  
 N  
 G

## BASEBALL

**KINGSBURG HIGH SCHOOL** enjoyed the most successful baseball season in recent years this season. The games this year were played at the renovated town ball park and large crowds were accommodated at every game.

In pre-season games, the Vikings defeated Fresno High once and Roosevelt, the valley champions last year, twice.

The Vikings opened the season against Reedley. Reedley players and fans marred the game with poor sportsmanship, halting the game twice and milling about the field to dispute the umpire's decisions. The game, which was later called off on account of rain, was ruled as no contest by the commission.

Washington Union lost to Kingsburg in a close twelve inning game, 4-3. Paul Wiese fanned nine batters and allowed only three hits.

In the game with Sanger, Kingsburg ran wild and the game ended with the score 17-1 in favor of the Vikings.

In the next game with Reedley, the last place team, the Vikings were plainly nervous and lost, 4-1.

Paul Wiese, veteran of three years of regular mound duty, continued his strike-out record with 13 fan-outs in the Washington Union game of the second round. The score was 4-3 in favor of Kingsburg.

The following week Kingsburg won the division title when it defeated Sanger, 6-1. Wiese added to his strike-out roll as he fanned 14, while releasing only two hits.

1  
 9  
 3  
 4





First Row: Mildred Ratliff, Mitsuye Ando, Ruth Hanson, Captain Florence Rudholm, Bertha Oneal, Evelyn Waters, Mildred Johnson.  
Second Row: Lula Dukes, Donna Henderson, Alys Olson, Coach Larson, Helen Nord, Etta Kaiser, Phyllis Quist.

## VOLLEYBALL

THE GIRLS STARTED the volleyball season full of pep and enthusiasm and under the direction of Miss Larson, the girls' coach, a good team was developed. From a large number of candidates who reported, thirteen were selected for the squad.

Florence Rudholm was elected captain of the volleyball team.

It is seldom that all of the girls on the squad play a sufficient length of time to earn a letter. However, such was the case this year, every girl receiving an award.

Florence Rudholm, Bertha Oneal and Etta Kaiser have been members of the volleyball team for four years. Helen Nord, Lula Dukes, Ruth Hanson and Phyllis Quist played their second year of volleyball this season.

Although the Viking girls lost two of the three games they played, they played well and enjoyed themselves thoroughly, displaying good sportsmanship to cap their performance.

The scores of the games were as follows:

Selma—3	_____	0—Kingsburg
Kingsburg—3	_____	0—Laton
Riverdale—3	_____	0—Kingsburg



VE

V  
I  
K  
I  
N  
G



First Row: Bertha Oneal, Virginia Waggoner, Lula Dukes, Vena Crass, Captain Florence Rudholm, Ruth Hanson, Neva McNaught, Dorothy Patz.  
Second Row: Tsugi Hamada, Marjorie Alves, Evelyn Waters, Mildred Johnson, Sylvia Broline, Sylvia Querin, Ruth Hedberg, Harriet Fields, Miss Larson.

## GIRLS' INDOOR

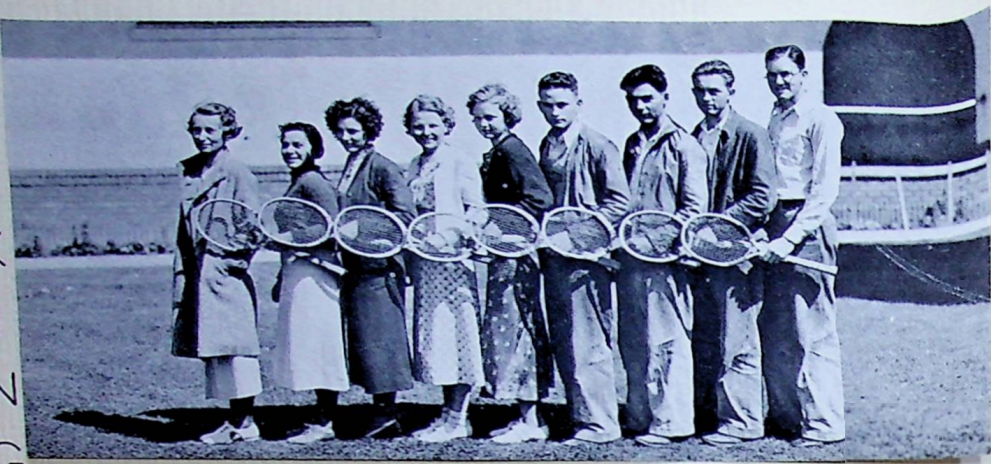
WITH THEIR USUAL enthusiasm and pep, the Viking girls started the 1934 indoor baseball season. The season this year started earlier than usual. A good team was developed under the able leadership of Miss Larson, girls' coach.

A large number of girls turned out, among them being many veterans of league indoor. Lula Dukes, whose skillful playing in left field was of great help to the team last year, played again this year. Florence Rudholm has done wonderful work on second base and short-stop for several years. Ruth Hanson and Ruth Hedberg, both members of last year's team, turned in a good pitching record. Dorothy Patz, a veteran catcher, was behind the plate again. Vena Crass was doing excellent work at left short-stop when she unfortunately hurt her wrist and was out of competition for a time. Sylvia Querin, also a veteran player, has shown up well on the bases this year.

The girls played six games this season, twice the number that they played last year. In their league was Washington Union, Central Union, and Selma.

1  
9  
3  
4





Miss Kraeger, Ruby Vartanian, Bertha Oneal, Sylvia Broline, June Crouser, Edgar Dunn, Garoun Andranigian, Arthur Clark, Harvey Wilson.

## TENNIS

<i>Girls' Singles</i> .....	SYLVIA BROLINE
<i>Boys' Singles</i> .....	GAROUN ANDRANIGIAN
<i>Girls' Doubles</i> .....	BERTHA ONEAL, JUNE CROUSER
<i>Boys' Doubles</i> .....	EDGAR DUNN, ARTHUR CLARK
<i>Mixed Doubles</i> .....	RUBY VARTANIAN, HARVEY WILSON

A SUCCESSFUL SEASON was completed on April 21 by the Viking net players. The division meet was held at Lemoore this year. Most of the Kingsburg contestants won their preliminary matches.

Garoun Andranigian, on the tennis team for the first time, won both the first and second matches to qualify for the county meet.

Edgar Dunn and Arthur Clark won in the division again this year in the boys' doubles.

In the county matches held in Fresno on April 21, the two Kingsburg teams lost after a hard struggle.

1 Three of the members of the tennis team, Bertha Oneal, Arthur Clark,  
9 and Edgar Dunn, will graduate. The remaining five will return next  
year.

3 Competition for the team was keener this year than ever before. It  
required two weeks to run off the matches, and, by the process of elimi-  
nation, select a team to represent Kingsburg. Since so many were under-  
classmen, prospects for next year are bright.

4 This is the sixth successive season that Miss Kraeger has coached the  
net players here, and it has been through her work that so much interest  
in the game has been aroused.



## INTRAMURAL SPORTS

TWO HOTLY CONTESTED football games marked the advent of interclass athletics this year. After weeks of ballyhoo and secret practice, the underclassmen met the Seniors, only to go down to defeat to the tune of 19-0. The underclassmen employed a sloppy shift that combined all the bad points of every shift invented. The shift was supposed to confuse the Seniors, but the underclassmen were more confused than the Seniors.

In the Freshmen-Sophomore-Junior team the school witnessed for the first time one of the "banker teams" made famous by Pat Page. "The team was counterfeit because the quarters were plugged and could not pass; the halves were lead and could not circulate. The line was like a bank because it went bust so frequently."

In the lightweight interclass football game, the Sophomores attempted to defeat the rest of the school with little success. The final score was 13-6 in favor of the Freshmen-Junior-Senior team.

In volleyball, the Sophomore girls defeated the Freshmen and therefore earned the right to play the Seniors, who had defeated the Juniors. The Senior girls were too strong and the Sophomores lost.

The boys took up volleyball and several games were played between the various physical education classes. The game soon lost all signs of effeminacy when the boys started playing it.

A return to football was made on Thanksgiving Day when the High School faced the Alumni. With college players included in the Alumni line-up things looked black for the varsity. An unexpected show of power on the part of the High School gridders had the Alumni stopped for the greater part of the game. Until the last ten seconds of play, the score was tied at 6-6, but an exciting finish gave the game to the Alumni, 13-6.

An interclass basketball game was held in February. The Seniors lost, 9-6. It was a case of superior blocking and tackling on the part of the underclassmen.

When the girls began their indoor baseball season, they engaged the boys in several practice games. The boys played abominable baseball since they failed to keep their eyes on the ball. They insisted they were doing the gentlemanly thing by not playing too superior a game.

On the annual Clean-Up Day, interclass boys' indoor baseball games were played. The Sophomores defeated the Freshmen. The Seniors, who were more interested in the punch and cookies that awaited them, lost to the Juniors.

In paddle tennis, horse shoes, and handball, competition was keen but no one was winner long enough to be called champion.

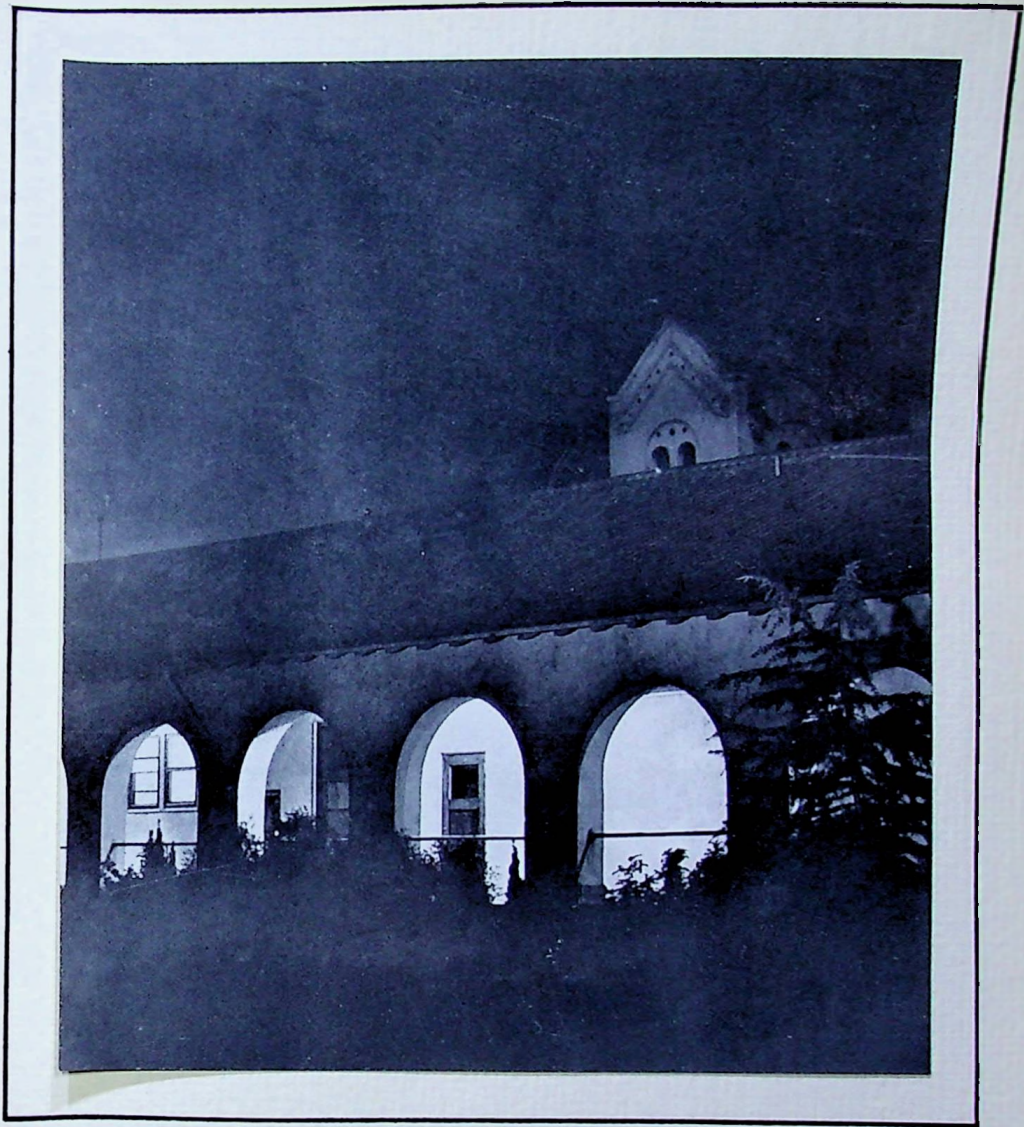
The interclass track meet was held late in the spring.

The interclass athletic events proved successful this year from the standpoint of the students since they gave many a chance to participate in organized athletics who were otherwise unable to do so.



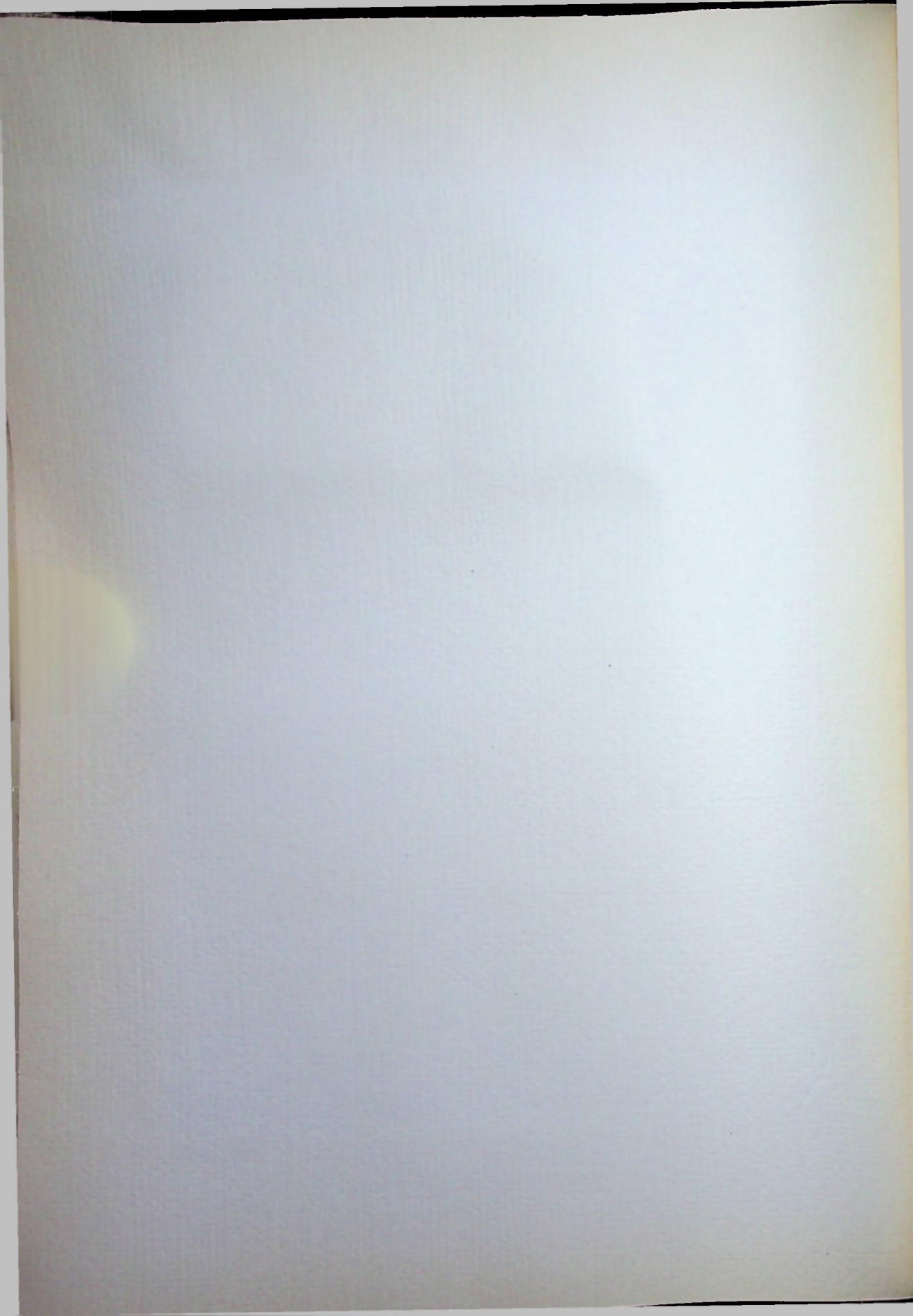
BREATH OF LIFE





*Inspired with the love  
In our hearts we shall know  
How to love thee, to serve  
Thee, the Green and the Gold.*









WE  
V  
I  
K  
I  
N  
G

1  
9  
3  
4



Sylvia—Do you love me Edgar?

Edgar—Of course I do.

V in the movies.  
Sylvia—Then why don't your chest go up and down like the heroes

I Pete Alves—I can't see why they call a boat a "she"?

Bill Carlson—Then you've never tried to steer one.

K Teacher—When I started out in life I had nothing in the world to  
guide me but my own intelligence.

I Art Clark—That was sure a bad start.

Charles Schaffer—Have you ever done any public speaking?

N Eldon Erickson—Once. I proposed to a girl over the telephone.

G Jarl Klockars—What are you putting water in that ink for?  
Rousas Rushdoony—Shh.....I'm writing a letter to my girl and I want  
to whisper to her.

Walter Anderson—I dreamed last night that I died.

Roy Dahl—And the heat woke you up.

Helen Hanson—They say I have eyes just like my father.

Ray Huddleston—Yes, I heard some one say you were pop-eyed.

Mr. Vaniman—Bill, how close were you to the answer to the second  
question.

Bill Carlson—About five seats.

Ethel Nord—I was quite upset when Ed kissed me.

Clara Eastlund—Why, hadn't he kissed you before?

Ethel Nord—Yes, but not in a canoe.

George Williams—If the boss doesn't take back what he said, I'm  
going to quit my job.

Carl Wendling—What did he say?

George Williams—You're fired.

1 Clifford Palm—Do you mind if I kiss you?

9 Dorothy Patz (no answer)

Clifford Palm—Do you mind if I kiss you?

3 Dorothy Patz (no answer)

Clifford Palm—Are you deaf?

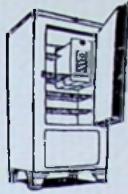
4 Dorothy Patz—No, are you dumb?

Mr. Peterson—In what course do you expect to graduate?

James Lahann—In the course of time.



NEW *Air-Cooled*  
**ELECTROLUX**  
THE SERVEL *Gas* REFRIGERATOR



The Mechanical Refrigerator  
without a moving part

♦  
... no noise

... no vibration

COSTS 3¢ PER DAY TO OPERATE

See this marvelous refrigerator  
before you buy

♦  
**KINGSBURG  
HARDWARE &  
FURNITURE  
COMPANY**

LOCAL AGENTS

**I D E A L  
B A K E R Y**

*Home of*

**QUALITY  
GOODS**

♦  
H. WILDERMUTH

Phone 23

Kingsburg

*WE EXTEND*

*Greetings and Best Wishes to the  
STUDENT BODY, PRINCIPAL AND TEACHERS  
of the*

**Kingsburg High School**

**VALLEY LUMBER  
COMPANY**

♦  
PAUL NORDSTROM, *Local Manager*

PHONE 12

VE  
V  
I  
K  
I  
N  
G  
  
1  
9  
3  
4



ME  
V  
I  
K  
I  
N  
G  
What's a cure for love at first sight?  
Second sight.

The reason most couples close their eyes when kissing is to prevent each other from seeing how foolish they look.

Mr. Vaniman (anxiously)—Is it a him or a her?  
Nurse—It's a them.

HIGH SCHOOL WOULD BE A WONDERFUL PLACE IF IT  
WEREN'T FOR THE CLASSES.

A woodpecker lit on a Freshie's head  
And settled down to drill.  
He bored away for half a day  
And then he broke his bill.

Ruth Lundberg—Do you really like conceited boys better than the other kind?

Eileen Swedell—What other kind..

John Gunnarson—I loved a girl once and she made a fool out of me.  
Donna Henderson—What a lasting impression some people make.

Miss Knapp—All extremely bright men are conceited.

Bill Schneider—Oh, I don't know. I'm not.

Senior—Are you a Freshman?

Frosh—No, I'm a Swede.

Elton Melin says that he wishes girls would keep their schoolgirl complexion instead of leaving it on his coat.

#### A JUNIOR LOOKING IN THE MIRROR

1  
9  
3  
4  
"You are a dear,  
I love each glance;  
I'd love you, too,  
If I had a chance.

You are so pretty  
And adorable, too;  
You little darling,  
I'm glad I'm you."

Richard Forsblad—The person who lives next door to me is no gentleman.

Henry Jewell—How's that?

Richard Forsblad—It's a lady.



Miss Kraeger—Now, students, this afternoon we shall dissect and examine the inner workings of the frog. Here is a specimen frog for our use. She pulled from her coat pocket a paper bag. To her astonishment out rolled a nice fat ham sandwich. That's funny, she said, I distinctly remember eating my lunch.

There are meters of accent,  
And meters of tone,  
But the best of all meters,  
Is to meet her alone.

Paul Wiese—I struck out fourteen men in yesterday's game.

Evelyn Burnett—Why, I thought there were only nine men on a team.

The class had been instructed to write an essay on winter. Chester Jern's attempt read as follows: In winter it is very cold. Many old people die and many birds go to a warmer climate.

Warren Norman—What is your idea of clean sports?

Kenneth Pearson—Swimming.

Lewis Nordstrom—I am a sel made man.

Evelyn Olson—It's good of you to take all the blame.

---

## HOME

Home reflects character. More, it molds character. Home is the image of thought exposed, inviting the gaze of the world. As your home is, so are you. Then make your home as you want to be—in good taste, dignified, ennobling, to be admired. But see to it that it is also beautiful, comfortable and durable.

You build with assurance if you let us plan your home. We furnish all materials necessary out of our ample stock. We are building experts. Make use of our service. It is free.

---

## CITIZENS LUMBER COMPANY

*The Home-Owned Yard*

CHAS. SCHAFFER, Manager

J. MILFORD JOHNSON, Vice-President

---

ME  
V  
I  
K  
I  
N  
G

1  
9  
3  
4



WE

Art Clark—Dad, what makes the world go round?

Mr. Clark—Son, I've told you to stay out of the cellar.

V

Richard Mack—I've just been making my side ache over the book you gave us to read.

Miss Breed—Oh, really. Did you find it so amusing?

Richard Mack—No. I went to sleep on the top of it.

K

Mrs. Oneal—Bertha, why do you wipe your mouth with the back of your hand?

Bertha—'Cause its much cleaner than the front.

N

It's a wise child that goes out of the room to laugh when the old man mashes his thumb.

G

Mr. Peterson declares that, considering the fact that woman was the last thing made by God, the product shows both His experience and His fatigue.

The ardent lover, Roy Dahl, heard the clock strike the hours—first nine, then ten, then eleven. At the sound of twelve strokes, he burst forth passionately: How fleet are the hours in your presence, my beloved!

Don't be silly! said Catherine Ratliff. That's pa setting the clock.

Mrs. Pierce—John, I think sheep are the most stupid creatures living.

Mr. Pierce (absent-mindedly)—Yes, my lamb.

A certain teacher passed a sobbing little girl on the street and stopped to tell her not to cry. She offered a convincing argument: You know it makes little girls homely when they cry.

The little girl stared at our teacher and then remarked, You must have cried an awful lot when you was young.

Please tell me, Robert, directed Mr. Schreiber, where shingles were first used.

I could, sir, replied little Robert Carlson in some embarrassment, but I'd rather not.

1

9

A cat stood on the railroad track;

A train was coming fast.

3

The cat stepped off the railroad track

And let the train go past!

4

Naturally!!!

Mrs. Aslan—What did you learn in school today Alice?

Alice—The name of the boy who moved next door .



THE  
V-I-K-I-N-G  
G



1  
9  
3  
4



NE  
V  
I  
K  
I  
N  
G

STATIONERY

KODAKS

FINISHING

*We Do Developing, Printing, Enlarging, Which Pleases*



# Ostrom's Pharmacy

D. W. OSTROM, *Proprietor*

*Prescription Specialists*

KINGSBURG

CALIFORNIA

Mr. Catlin (in middle of joke)—Have I ever told you this one?  
Class (in chorus)—Yes!  
Mr. Catlin—Good. You'll probably understand it this time.

*She stood on the bridge at midnight;  
A beaver was daming the river.  
And Jack with a broken radius rod,  
Was doing the same to his flivver!*

William Schneider—You should put your hand over your mouth  
when you yawn.  
Henry Kaiser—What? And get bit?

## GUST A. HARD SHOE STORE

*Stylish and Comfortable Shoes for  
All the Family*

*First Class Shoe Repairing*

1441 Draper St. Kingsburg

*With Best Wishes*

## THE PEACOCK CONFECTIONERY

WM. A. BUEHLER



---

# THE KINGSBURG RECORDER

ALBERT L. CHADWICK and J. BOYCE SMITH  
*Publishers*

COMPLETE NEWSPAPER PUBLISHING AND  
JOB PRINTING PLANT



... The Newspaper ...

WILL BE A VERY NECESSARY INSTITUTION IN ANY COMMUNITY  
POSSESSING A HOPE FOR FUTURE EXPANSION, LONG  
AFTER OTHER MEDIUMS HAVE BEEN  
FORGOTTEN

... Advertise ...

IN YOUR LOCAL NEWSPAPER ... CONVINCING  
... ATTRACTIVE COPY ... REGULARLY ...  
CONTINUOUSLY !! CONCENTRATE !!

◆ ◆ ◆  
*Money spent with The Recorder helps to build up your community  
as well as your business*

---

VE  
V  
I  
K  
I  
N  
G  
  
1  
9  
3  
4



W  
V  
I  
K  
I  
N  
G  
Heard in a bridge game—If dirt were trumps, what a hand you'd have!

Gertrude Tapp was indignant at the slow speed of the bus. She appealed to Clarence Erickson, who was driving. Can't you go any faster than this?

Clarence Erickson—Yes, but I have to stay on the bus.

Janice White is always bragging about how good a house-girl she is. She says that at home she always gets up early and has every bed in the house made before anybody else wakes up.

Laugh everytime you feel tickled and laugh once in a while anyhow.

Love is blind, but marriage is an eye-opener.

The new clergyman was coming to call, and Mrs. Peterson gave Lois some instructions: If he asks your name, say Lois; if he asks how old you are, say you are twelve; if he asks who made you, say God made me.

When the clergyman came, he asked little Lois those very three questions. Lois answered the first two correctly but when questioned as to her origin, she hesitated and said: Mama did tell me the man's name, but I've gone and forgotten it.

Frances Loucks told her father that they had been weighed in school that day.

Ain't you a lot fatter than you was?

Yes, dad, admitted Frances. I weigh one hundred and thirty pounds stripped for "gym."

Her father gazed at her for a moment in horrified amazement and then shouted: Who in thunder is Jim?

1  
9  
3  
4  
Mr. Dunn was telling at the table of a fight between two men in which he had interfered. One had swung a shovel aloft, shouting, I'll knock your brains out.

It was at this moment, said Mr. Dunn, that I stepped in between them. Little Edgar had been listening, round-eyed with excitement. Now, he burst forth: I guess he couldn't knock any brains out of you, could he, pa?

Edward Morine—What I want to know is, am I a bass or a baritone?  
Miss Chaplin—No---you're not.

The cause of divorce is matrimony.



---

*Poultry Feeds  
Poultry and Eggs*

*Garden and Field Seeds  
Wood and Coal*

*Insecticides and Germicides, Sulphur and Spray  
Materials, Spray Machines*

♦  
**Wm. A. Erickson**

1549 DRAPER STREET

PHONE 323

---

A FRESHMAN'S PRAYER

I want to be a Senior,  
And with the Seniors stand,  
With a fountain pen behind my ear  
And a notebook in my hand.

I wouldn't be a president;  
I wouldn't be a king.  
I wouldn't be an emporor  
For all that wealth could bring.

I wouldn't be an angel—  
For angels have to sing;  
I would rather be a Senior,  
And never do a thing.

Douglas Wilson (unable to see)—What is the first question on the board?

Mrs. Carner—Number one.

Mrs. Broline—Why did you let Clifford kiss you.

Eleanor—Well, he was so nice about it. He asked politely.

Mrs. Broline—The idea! Haven't I always told you to say no?

Eleanor—That's what I did. He asked if I would be very angry if he kissed me and I said, no.

Phyllis Quist—Don't act like a fool.

Betty Eckert—There you go---you always want the monopoly on everything.

Margaret Shellstrom—Do you like tea?

Eldon Erickson—Yes, but I like the next letter better.

W  
V  
I  
K  
I  
N  
G

1  
9  
3  
4



V Authorized Dealer  
I Eastman Kodaks

Student Supplies  
Typewriters

K  
I  
N  
G

TO THE CLASS OF 1934

"BEST WISHES AND SUCCESS"

# Schropfer's Stationery Store

OFFICE STATIONERY

SPORT GOODS

## DOWN THE STREAM OF HISTORY

You will find that knowledge intelligently applied has resulted in achievement.

The conscientious, intelligent application of knowledge in the manufacture of men's clothing has resulted in internationally famous concerns, Hart, Schaffner & Marx, John B. Stetson Hat Co., Cluett, Peabody & Co., manufacturers of Arrow Shirts is evidence of it.

Their knowledge scientifically applied has made it possible for them to make merchandise that has proven more satisfactory to the consumer. In brief, men who are wearing well known brands have learned that it really costs less.

You will find the merchandise of leading manufacturers only in the better stores.

K. G. LINDQUIST & SON

"MEN'S WEAR"

*"There Is No Substitute for Quality"*



---

CONGRATULATIONS AND BEST WISHES  
to the  
CLASS OF '34

♦  
JUSTESEN'S FOOD STORE  
AND MARKET  
No. 4

---

ADVICE TO SOPHOMORES

Love is like an onion,  
We take it with delight;  
But when it's gone we wonder  
Whatever made us bite.

ADVICE TO JUNIORS

Now, Juniors, to stay healthy you must take care  
For to trifle with Seniors leads but to despair.

ADVICE TO FRESHMEN GIRLS

A kiss in time saves many a five mile walk.

ADVICE TO ATHLETES

Early to bed,  
Early to rise,  
And your girl goes out,  
With some other guys.

---

Sash and Doors  
Cabinet Work  
Screens

Hardwood Lumber  
Auto Glass  
Mouldings

*Congratulations to the*  
CLASS OF '34

♦  
KINGSBURG PLANING MILL

O. F. ERICKSON

WILLIS ERICKSON

---

ME  
V  
I  
K  
I  
N  
G

1  
9  
3  
4



ME

Paul Pettigrew—I thought you had a date with Phyllis last night.

V

Harold Vandagriff—I did, but when I saw her leave the house with some one else just as I was arriving, I got so disgusted, I called it off.

I

Harry Strid—What shall I do for water on the knee?

Coach Bunger—Wear pumps.

K

Elton Melin fell very abruptly on his posterior and that region pained him considerably. Soak it in Epsom Salt, yelled Floyd Haskell.

I

N

A little boy, Wendell Catlin, in church, tired of the long kneeling during prayer, decided he could stand it no longer. Finally he leaped to his feet and shouted, Last one up's a nigger baby. His mother was not the last one up.

G

Charlie Goorigian—Hasn't that girl got a kind face?

Alvin Mellow—Yes, a funny kind.

Miss Kraeger—Can you explain what a vacuum is?

Dale Turner—I can't explain it but I have it in my head.

Herman Olsen—What shape is a kiss?

June Crouser—Why, I don't know.

Herman Olsen—Give me one and we'll call it square.

For Boys only (read backwards)—Didn't you if woman a be wouldn't you; it read would you knew we.

Harry Nakata—Shakespeare said, Wise men hesitate where fools are certain.

Miss Roper—Are you sure?

Harry Nakata—I'm certain.

1  
9  
3  
4

# KINGSBURG MEAT AND GROCERY

GROCERIES, VEGETABLES AND MEATS

## Quality Service

J. C. KRAMLING

PHONE 59



THE VIKING



1  
9  
3  
4



WE  
V  
|  
K  
I  
N  
G

---

## BROLINE BROS.

GROCERIES . . MEAT . . DRY GOODS

*Telephone Us Your Order*

Phone 216

We Aim to Please

---

FOR QUALITY AND VALUE

*. . . Call At . . .*

**KINGEN'S 5-10 and 15c STORES**

---

## **Kullberg's Shoe Store**

**KINGSBURG**

---

A Freshie went out to milk the cow;  
You see, he thought he knew.  
The Freshie got under the cow;  
The funeral will be held at two.

---

**GENEVIEVE FRANTZVICH**

**BEAUTY SHOPPE**

PHONE 4

1457 DRAPER STREET

---

*Try a Tank Full of*  
UNION 76

**C. R. MAGNUSON**

HIGHWAY No. 99

*Kingsburg*

*A Clean Place To*  
EAT

◆  
**KUM-ON-INN**

*"On the Highway"*

---

SATISFY THAT HUNGRY FEELING  
WITH GOOD EATS

*. . . at . . .*

**The Viking Lure**

---

|  
9  
3  
4



7  
VE

One way of becoming closely acquainted is to ride four in the front seat.

Women, generally speaking, are . . . generally speaking.

Marriage is a great game because it always results in a tie.

Mr. Vaniman (in chemistry)  
—Water plus heat yields what?  
Marian Wallin—A bath.

Little Ransome Broline had attended a football game for the first time. The game made a profound impression on his infant brain as his prayer at bed time that night showed. It went—God bless papa! God bless mama! God bless Ransome! Rah! Rah! Rah!



### Ice Refrigeration Never Fails

You know that with ice on the hot days when you need ice most—  
You will get all the ice you want—  
There will be no mechanical breakdown

ICE IS  
DEPENDABLE  
and AUTOMATIC

### Kingsburg Ice & Cold Storage

A. SVEN ANDERSON, Mgr.

V  
I  
K  
I  
N  
G

Harvey, how can you tell when a man is intoxicated? asked little Roger Peterson of his big brother Harvey.

Well, said Harvey, do you see these two men over there? Well, if you were intoxicated they would look like four.

But, Harvey, there is only one.

Silence is golden but all the girls are off the gold standard.

*What is your view of kissing?*

*I asked a flapper wise.*

*She said "I haven't any,*

*I always close my eyes."*

PHONE 209

1531 SIMPSON

## THE HAT AND DRESS SHOPPE

Exclusive Hats and Dresses for All Occasions

*"Quality Is the Best Economy"*

ANNA QUIST

BLANCHE TRABING

1  
9  
3  
4



Choice Cut Flowers

Hard Plants

Dainty Baskets

*Artistic Floral Designs*

## **Ericson Floral Shoppe**

Phone 177-W

1548 Lincoln

Class, said Mrs. Carner, I want you to be so quiet that you can hear a pin drop.

Silence was golden.

Finally Ed Morine spoke up. Let her drop.

Little flunks in English,

Little flunks in French,

Make the football hero

Sit upon the bench.

Charlie, said Mr. Catlin, after waiting some minutes for the answer to a previous question, have you ever been to a zoo?

No sir, replied Charlie Goorigian.

Well, you ought to go. You would enjoy seeing turtles whizz by.

Remember this and bear in mind,

A real good joke is hard to find.

When we have a joke that's new,

Don't get sore if the joke's on you.

## **Ideal Grocery**

B. ALVIN, *Proprietor*

Phone 30-W

1453 SIMPSON

KINGSBURG, CALIF.



## ADVICE TO SENIORS

If you don't feel just right,  
If you can't sleep at night,  
If your throat is dry,  
If you moan or sigh,  
If you can't study, too,  
If you don't know what to do,  
If your heart doesn't beat,  
If you get cold feet,  
If your head takes a twirl,  
For goodness sakes, marry the girl!

Mr. Flood—So you're at the bottom of your class. Don't you feel ashamed of yourself?

Herbert—But father, it isn't my fault. The boy below me was expelled.

Yoshito Yamada—Did your watch stop when it hit the floor?  
Brooks Johnson—Sure. Did you think it would go through?

Mrs. Nordstrom—Eugene, is this your father's signature?  
Eugene Bjorklund—Yes, as near as I could get to it.

Mr. Ray Adams was proposing to Helen Peterson. And sweetheart, he finished, I'll lay my whole fortune at your feet.

It isn't a very big fortune, Helen reminded him.

I know, dear, but it will look awfully big beside your little feet, returned Ray.

P. S. He got the job.

Mr. Schreiber—What is cow-hide used for?

George Rodgers (fresh from Traver)—To hold the cow together.

---

## KINGSBURG DEP'T. STORE

◆ ◆ ◆  
Ready-to-Wear, Dry Goods, Men's Furnishings

◆ ◆ ◆  
*Our Slogan—If It's New We Have It*

---

7  
V  
I  
K  
I  
N  
G

1  
9  
3  
4



WE  
V  
I  
K  
I  
N  
G



1  
9  
3  
4



---

**ALEX E. NELSON**  
LAWYER

♦

OFFICE PHONE 241-W

POST OFFICE BUILDING

---

**O. A. OLSON, M.D.**  
GLASSES FITTED

♦

1524 MARION STREET

TELEPHONE 48

---

**DR. C. C. KOLANDER, '12**  
DENTIST  
X-RAY SERVICE

Phone 246; Res. 283

Bank of America Building

---

**ELMER E. CARLSON, '10**  
ATTORNEY-AT-LAW

♦

Office Phone 43; Res. 324

Bank of America Building

---

**EWALD A. LARSON, M.D.**

♦

KINGSBURG SANITARIUM

PHONE 15-W

---

**DR. J. V. ANDREWS**  
DENTIST  
X-RAY SERVICE

Office Phone 269-W

Residence Phone 269-J

---

**DR. CARL M. STOKER**  
CHIROPRACTOR

Office Phone 305  
Over Post Office

Residence Phone 53  
Kingsburg, Calif.

---

ME  
V  
I  
K  
I  
N  
G

1  
9  
3  
4



ME

Emogene Wiese—I play the piano to kill time.  
Walter Pinheiro—You've sure got a fine weapon.

V

Coach Bunger (to players)—Remember that baseball develops individuality, initiative, and leadership. Now get in there and do exactly as I tell you.

K

Many a wise-cracker is only half-baked.

I

Freshman Class motto—United we stick; divided we're stuck.

N

John Gunnarson—Where's that funny paper?

G

Mr. Gunnarson—Funny paper? Today's not Sunday. I told you not to take that bath last night.

Mr. Pierce—Do you mean to tell me you ditched school all day?  
Orville Burgeson—No, I didn't mean to tell you, but you found it out anyway.

Miss Chaplin—Who organized the rough riders?  
John Edward Olson—Henry Ford.

Wendell Catlin—Who's the smartest man in the world and why am I?

Chester Westerling (in English)—In the midst of his speech he realized he had no supporters and sat down.

What's the use of buying ink, says Earl Linman, when you live only three blocks from the postoffice?

Melvin Norman—Did you call up Lorraine last night?  
Glenn Kolander—No, I wanted to go to bed early, so I went to a show.

The Viking is a great invention;  
The staff gets all the fame;  
The printer gets all the money;  
The editor gets all the blame.

1

9

Betty Bonesteel—If you could act like I can, what would you do?  
Homer Bengston—Oh, I wouldn't be discouraged; I'd try again.

3

4

We could put some more jokes in here but what's the use? You'd only laugh at them.

If there are any jokes missing here, you can find them running loose around school.





---

---

## GRAPEVINE CONFECTIONERY

1521 Draper Street

KINGSBURG - - CALIFORNIA

♦

# Home-made Ice Cream

♦

MADE UP TO INDIVIDUAL ORDER  
PHONE US OR CALL

C. H. HARVEY, *Proprietor*

---

V  
I  
K  
I  
N  
G



GENERAL ELECTRIC MODERN KITCHEN

MAGNUSON'S HARDWARE STORE

---

1  
9  
3  
4



# AUTOGRAPHS

- |   |                          |                          |
|---|--------------------------|--------------------------|
| V | Mildred Wilson '37       | Thelma Bystrom '35       |
| I | Pauline Peilly '34       | Madeline Welchmuth '37   |
| K | Jean Magnuson '35        | Harriett Buehler '36     |
| I | Lorraine Cederquist '36  | Maryann Satterberg       |
| N | Conne Peterson '36       | Luella Stolter '36       |
| G | Marion Johnson '37       | Alice Sevanson '36       |
|   | Laura Magnuson '37       | Janette Nystrom '36      |
|   | Elvira Branco '36        | Rosena Munnick           |
|   | Della Williams '36       | Carol Morrison '35       |
|   | Hatsunomiya Enomichi '35 | Rosana Rosandies         |
|   | Bernice Sparks '36       | Hicabo Euki              |
|   | Rhoda Satterberg '36     | Nobuyasu Asamoto '36     |
|   | Donna Henderson '37      | Marjorie Kline '37       |
|   | Jean Erickson '37        | Ellen Hedberg '36        |
|   | Phyllis Olson '37        | Elaine Peterson '35      |
|   | Madeline Stokes '37      | Joy Fink '34             |
|   | Elaine Lindquist '37     | Hooring Saperjain '36    |
|   | Mildred Seaward '37      | Evangelina Belluschi '36 |
|   | Bernice Olson '35        | May Strid '35            |
|   | Melba La Cote '36        | Marjorie McNat '35       |
| 1 | Anita La Cote '36        | Harriet Thrauer '35      |
| 9 | Hildur Ahlstrom '36      | Elizabeth Schreiber '35  |
| 3 | Isugi Hamada '36         | Virginia Johnson '34     |
| 4 | Ruth Anderson '37        | Harriet Hultgren '35     |
|   | Radim Rosdahl '37        | Ethel Nord '34           |
|   | Margaret Ito '36         | Doris Bungo '35          |
|   | Jean Gustafson '37       | Mime Erickson '34        |
|   | Una Fredlund '34         | Evelyn Waters '36        |
|   | Hildur Christenson       | Comad Kolander           |
|   | Mitsuye Ando '35         | Ruth C. Hedberg '35      |
|   | Hatsuye Okuni '35        | Thelma Boren '37         |
|   | Harriet Fields '37       | Jackie O'ayp '36         |
|   |                          | Evelyn Olson '37         |



AUTOGRAPHS

- Lillian Sward '35
- Elizabeth Flockers '35
- Una Crass '36
- Blanche Shakerian '37
- Lily Csajian '35
- Getseki Komura '36
- Mitsuko Matsushita '36

miss newbecker:

What shall I write  
 What shall it be  
 Two little words  
 Remember me!

→ Vera Sylvia Braline

↓  
 3 Laverne Bruce '35

Betty Bonestell '35

3 m Ned Reed '37

7 c Allen Larson '37

+ N Walter Pinkins '35

7 W Elsie Strom '37

1 E Charlotte Stone

V  
I  
K  
I  
N  
G  
  
G

1  
9  
3  
4