

# 2017-18 LCAP SUBMISSION

---

Board Update

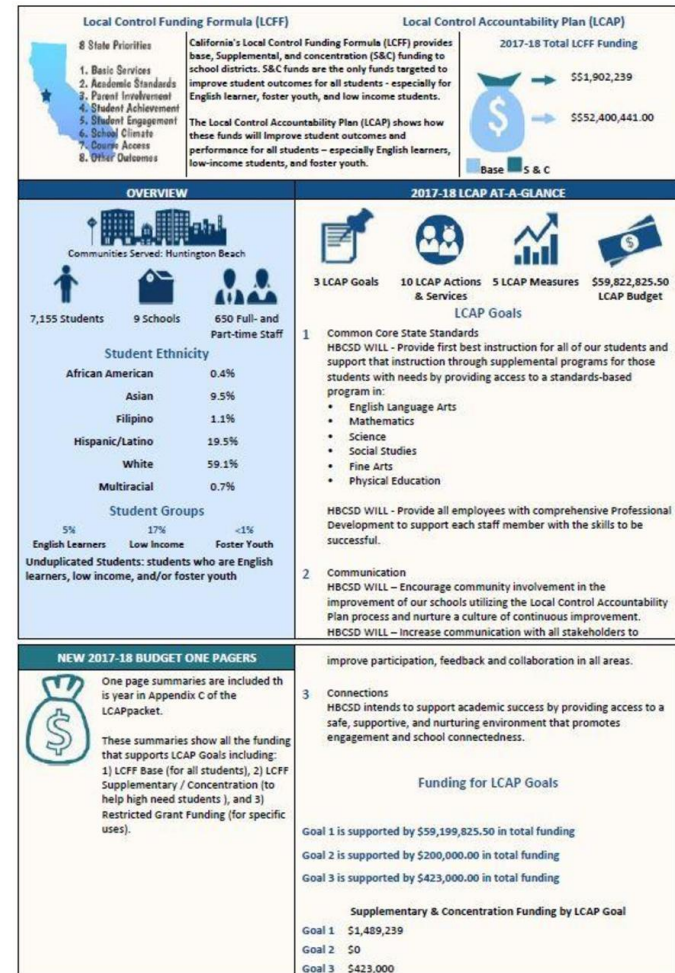
June 20, 2017

# Key Changes

- Additional teacher FTE funded through supplemental grant (G1, A2)
- Transition to SAI Model (G1, A2)
- Removal of web communication costs (G2, A2)
- Adjustments to site allocations (G3, A4)
- Increase in health services (G3, A5)

# Next Steps

- Inclusion of Infographic to Executive Summary
- County submission for formal approval
- Post final LCAP to website



# THANK YOU!

- Thank you for your continued support, guidance, and collaboration during the development our LCAP!