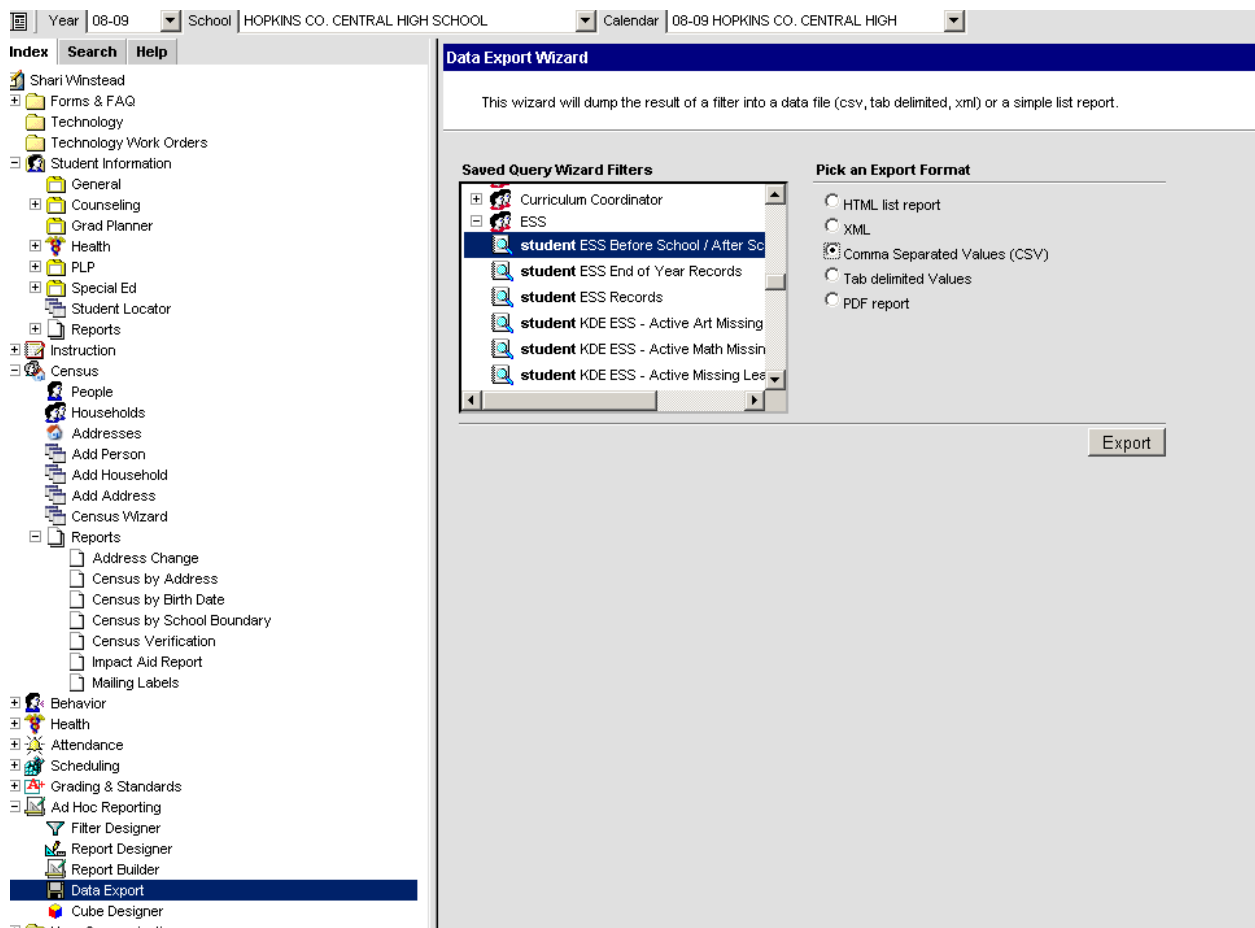


How to Determine Number of Students Served for ESS Before School and After School

Expand Ad Hoc Filtering > Data Export > ESS and select the filter named “ESS Before School / After School Hours”



Export in CSV format. Open in Excel.

Each column starting with Column D contains a 1 if the service was before or after school. You will want to add up the numbers in each column, so use the SUM function on the last row.

Click in the first cell not containing data in Column D. From the FORMULA menu, choose SUM. Then hit ENTER to save that formula in that cell.

yn	4	0
1	6	0
r	41	0
en	6	0
y	7	0
	=SUM(D2:D588)	
	SUM(number1, [number2], ...)	

Now copy that formula across the sheet to all the other cells. Click on the cell once. When you see the dot in the lower right corner, grab it with your mouse and drag it across to fill the formula in all the other cells.

6	0
7	0
	68

Now scroll back up to the top and rename your columns.

Each column will look like this. IN this case, Math1 means that math was delivered BEFORE SCHOOL: eSSKY.essServiceModelMath1. So edit the column to say MATH BEFORE SCHOOL.

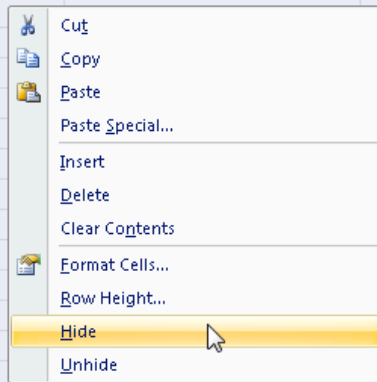
Continue across all columns as shown below.

	C	D	E	F	G	H
rstName	eSSKY.essHours	MATH BEFORE SCHOOL	MATH AFTER SCHOOL	ART BEFORE SCHOOL	ART AFTER SCHOOL	eSSKY.essServiceModelPractica
	12	0	0	0	0	1

Now hide the cells containing actual student names.

Click on the first row and highlight the cells all the way down. Then right mouse click and choose HIDE.

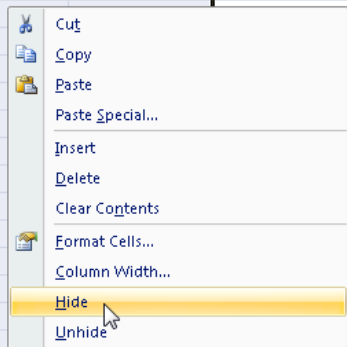
Arara	0	0	0	0
Evora	9	1	1	0
Golden	15	0	1	0
Crystal	6.5	0	0	0
Lynn	12	0	1	0
Leah	6			0
William	6			0
Don	7.5			0
Bob	1			0
Shay	13			0
Manda	6			0
Math	1			0
Trick	6			0
Addison	6			0
Bundy	1			0
Adley	2			0
Die	6			0
Lia	1.5			0
Mitney	3	0	0	0
Becca	8	0	1	0
D	6	0	0	0
Rin	6	0	0	0



Now you just have the names of the subjects along with the number of hours before and after school.

Go ahead and hide these columns.

A	B	C	D
student.lastName	student.firstName	ESSKY.essHours	MATH BEFORE SC



At this point, you could highlight the cells left and create a chart.

D	E	F	G	
MATH BEFORE SCHOOL	MATH AFTER SCHOOL	ART BEFORE SCHOOL	ART AFTER SCHOOL	ESSK
68	160	3	56	

