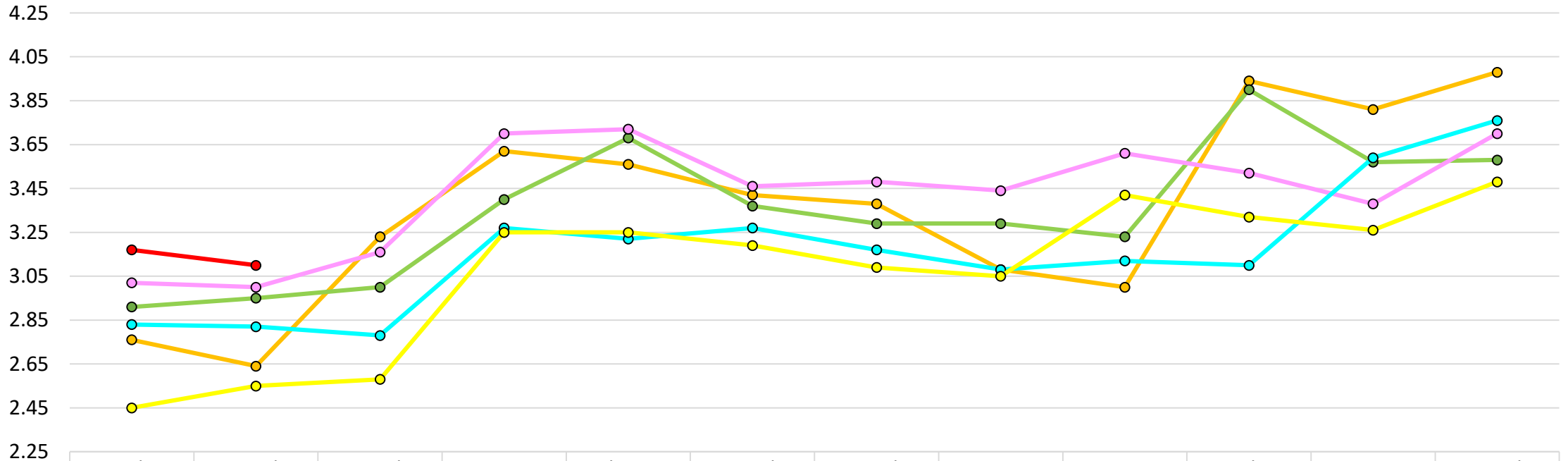


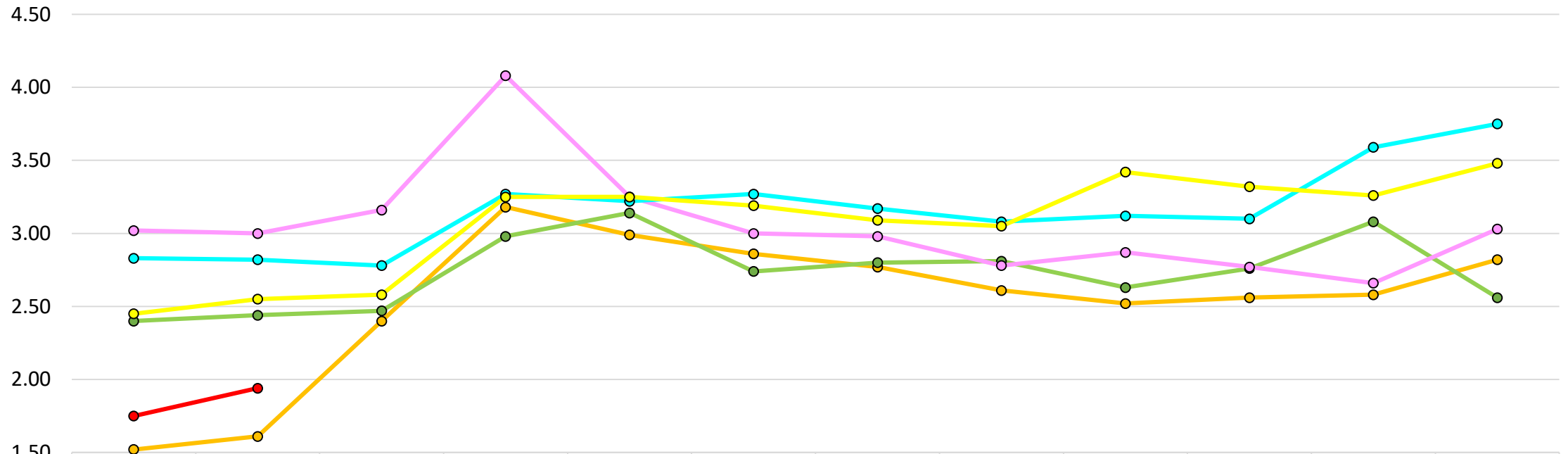
Hartselle City Board of Education Operating Balance – Month(s)



	October	November	December	January	February	March	April	May	June	July	August	September
● 2025	3.17	3.10										
● 2024	2.76	2.64	3.23	3.62	3.56	3.42	3.38	3.08	3.00	3.94	3.81	3.98
● 2023	2.91	2.95	3.00	3.40	3.68	3.37	3.29	3.29	3.23	3.90	3.57	3.58
● 2022	3.02	3.00	3.16	3.70	3.72	3.46	3.48	3.44	3.61	3.52	3.38	3.70
● 2021	2.83	2.82	2.78	3.27	3.22	3.27	3.17	3.08	3.12	3.10	3.59	3.76
● 2020	2.45	2.55	2.58	3.25	3.25	3.19	3.09	3.05	3.42	3.32	3.26	3.48

● 2025 ● 2024 ● 2023 ● 2022 ● 2021 ● 2020

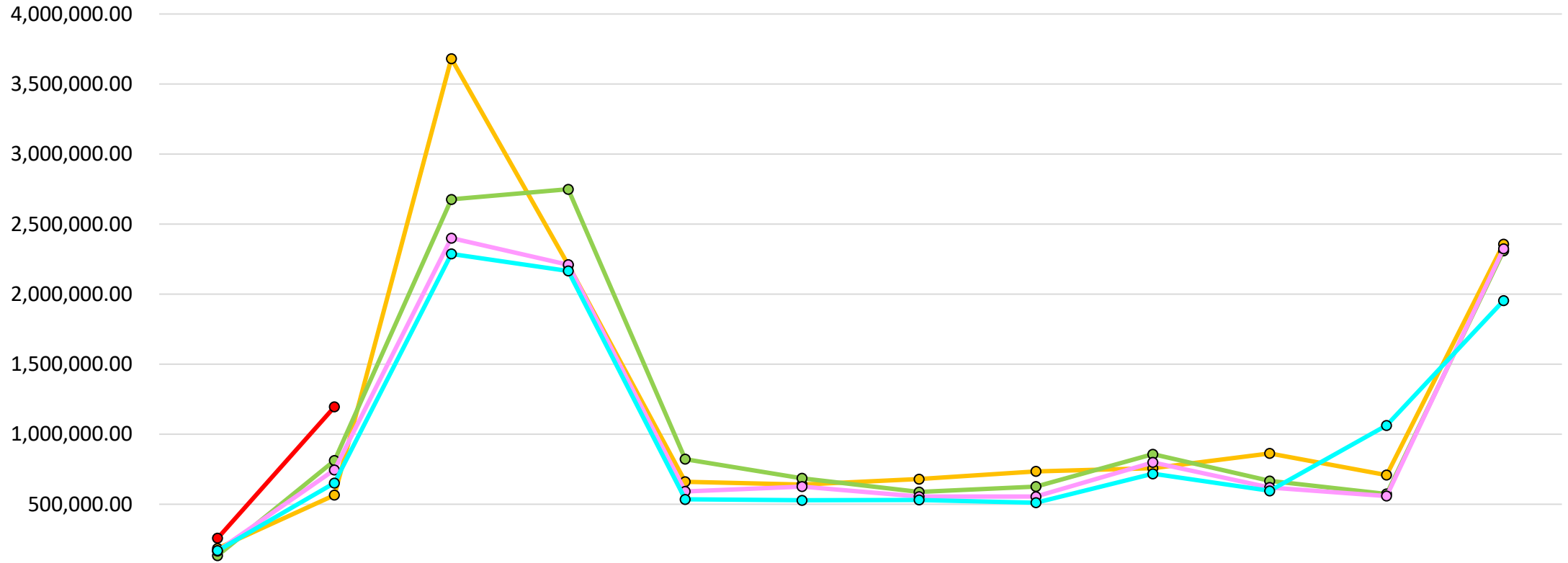
Hartselle City Board of Education Operating Balance (Net Reserve) – Month(s)



	October	November	December	January	February	March	April	May	June	July	August	September
● 2025	1.75	1.94										
● 2024	1.52	1.61	2.40	3.18	2.99	2.86	2.77	2.61	2.52	2.56	2.58	2.82
● 2023	2.40	2.44	2.47	2.98	3.14	2.74	2.80	2.81	2.63	2.76	3.08	2.56
● 2022	3.02	3.00	3.16	4.08	3.25	3.00	2.98	2.78	2.87	2.77	2.66	3.03
● 2021	2.83	2.82	2.78	3.27	3.22	3.27	3.17	3.08	3.12	3.10	3.59	3.75
● 2020	2.45	2.55	2.58	3.25	3.25	3.19	3.09	3.05	3.42	3.32	3.26	3.48

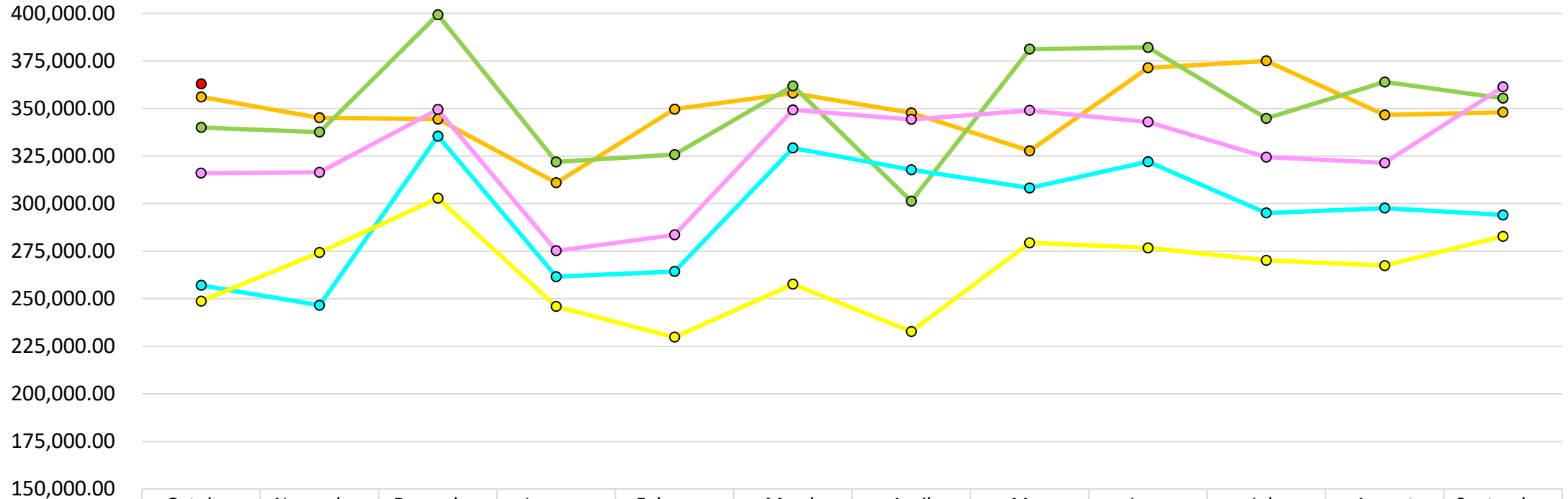
● 2025 ● 2024 ● 2023 ● 2022 ● 2021 ● 2020

Hartselle City Schools Local Revenue (Accrual Basis)



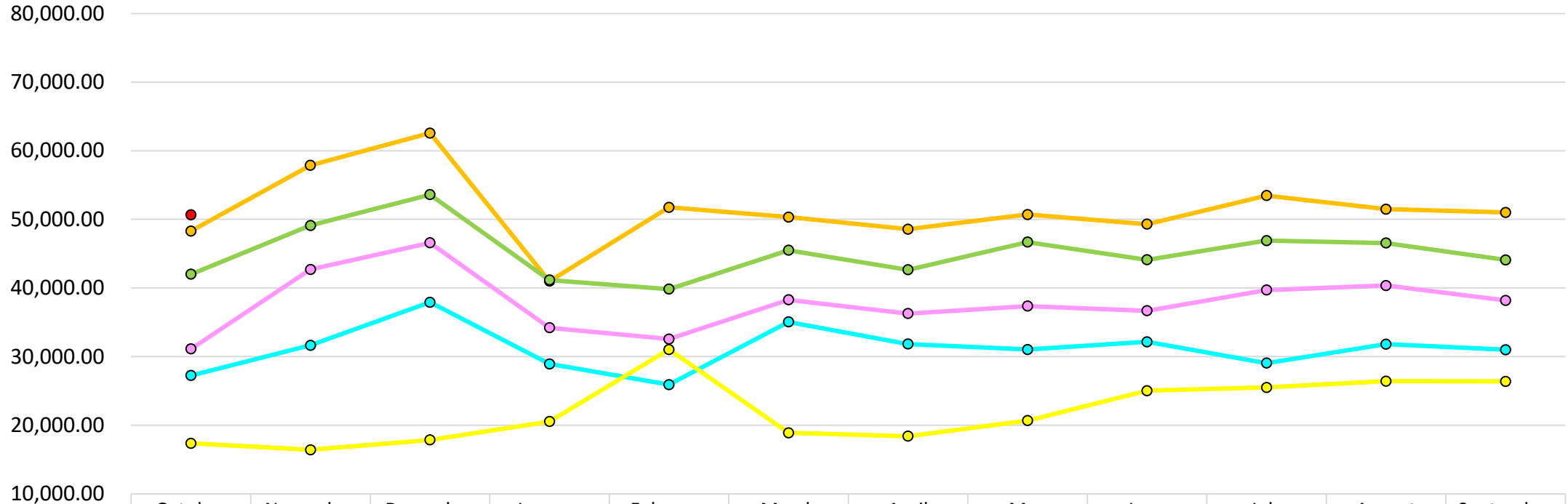
	October	November	December	January	February	March	April	May	June	July	August	September
● 2025	257,895.69	1,195,939.91										
● 2024	185,055.37	565,475.70	3,681,471.58	2,209,772.38	660,883.80	641,552.97	680,361.19	734,833.95	757,222.08	863,280.77	708,970.54	2,357,766.14
● 2023	134,338.95	812,400.50	2,676,986.24	2,749,410.78	822,579.06	685,828.78	588,289.19	626,195.30	857,570.77	666,468.72	573,648.58	2,308,769.04
● 2022	166,971.95	745,440.37	2,400,662.23	2,210,698.85	592,277.64	626,752.97	554,713.09	554,683.90	799,584.62	619,827.23	559,243.31	2,323,951.30
● 2021	169,052.08	652,289.09	2,288,100.83	2,166,158.27	535,038.36	528,766.97	530,954.33	511,712.30	717,551.51	595,844.45	1,063,419.82	1,953,587.36

Hartselle City Schools Sales Tax Revenue (Accrual Basis)



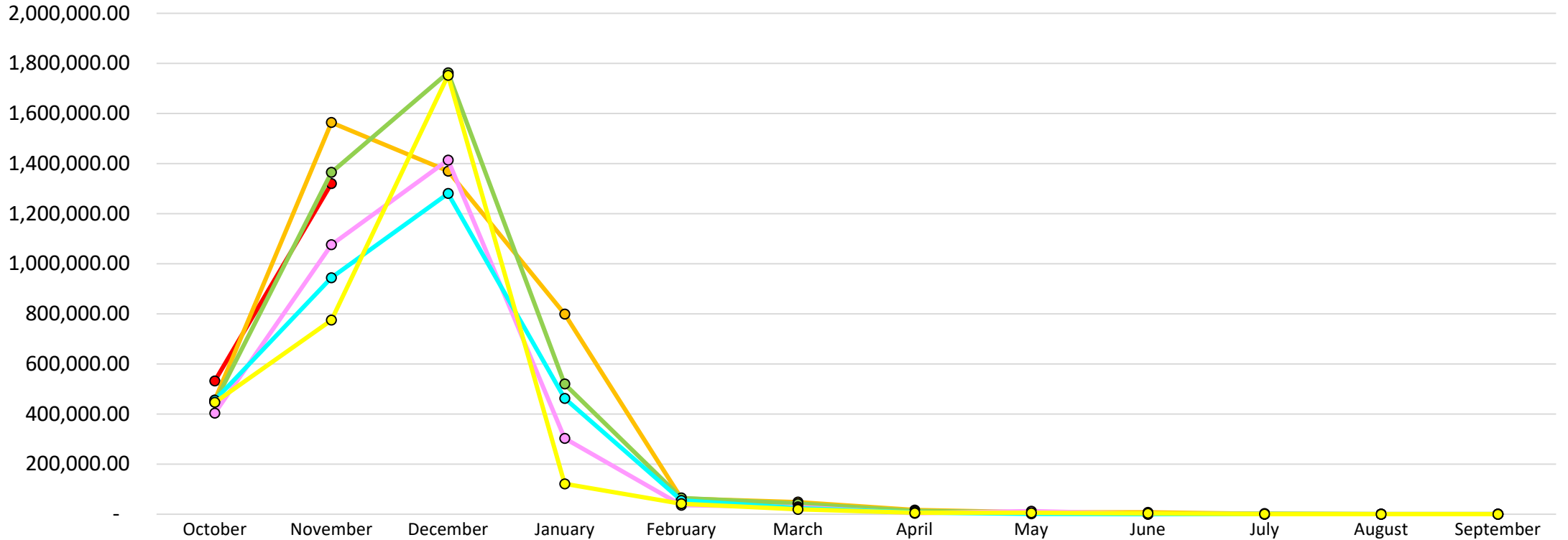
	October	November	December	January	February	March	April	May	June	July	August	September
● 2025	362,927.83											
● 2024	356,026.28	345,053.39	344,394.03	310,902.62	349,592.88	358,027.76	347,663.50	327,724.01	371,357.43	374,987.94	346,562.10	348,000.00
● 2023	340,015.36	337,572.50	399,248.77	321,907.89	325,773.26	361,860.91	301,220.90	381,180.13	382,064.61	344,787.78	363,889.85	355,338.85
● 2022	316,035.06	316,425.13	349,452.18	275,198.97	283,570.03	349,248.28	344,227.70	348,953.30	342,917.54	324,433.91	321,376.10	361,328.07
● 2021	257,066.25	246,573.67	335,427.90	261,604.26	264,327.14	329,220.58	317,745.33	308,233.25	321,981.79	295,071.44	297,581.48	294,044.12
● 2020	248,761.17	274,290.77	302,790.20	245,884.95	229,771.26	257,666.00	232,771.07	279,401.00	276,709.30	270,168.60	267,415.48	282,795.60

Hartselle City Schools Simplified Sellers Use Tax Revenue (Accrual Basis)



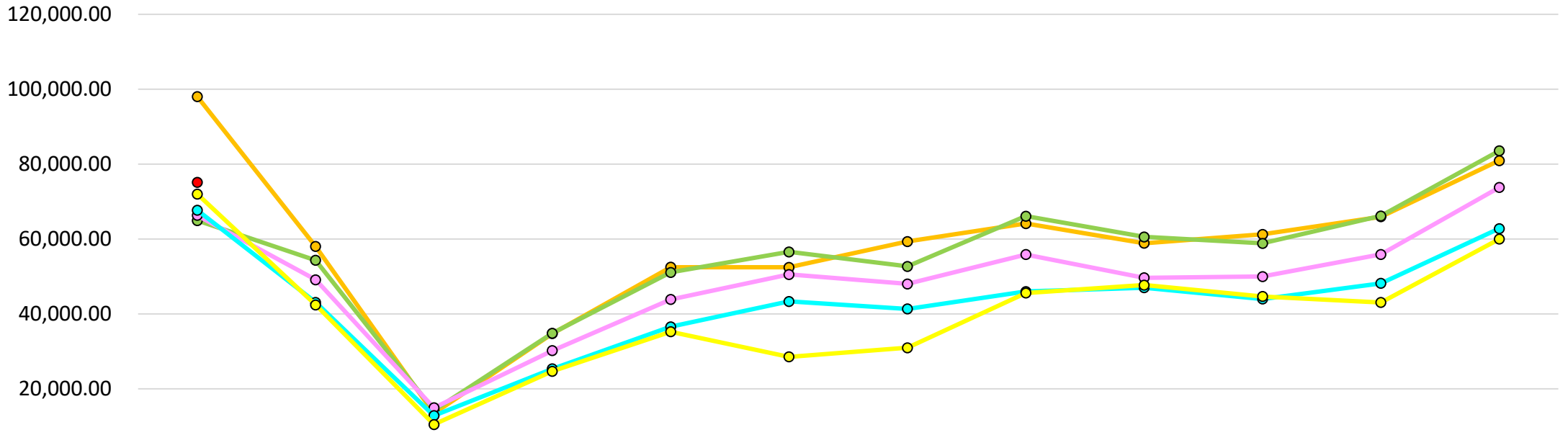
	October	November	December	January	February	March	April	May	June	July	August	September
● 2025	50,674.08											
● 2024	48,298.98	57,872.16	62,569.81	40,983.21	51,750.87	50,328.03	48,567.18	50,707.14	49,290.55	53,467.09	51,486.58	51,000.00
● 2023	42,003.59	49,114.57	53,594.41	41,161.19	39,837.41	45,491.39	42,654.69	46,685.42	44,111.75	46,907.00	46,545.94	44,094.23
● 2022	31,119.06	42,700.64	46,587.64	34,203.06	32,560.74	38,274.24	36,275.90	37,359.43	36,690.69	39,707.70	40,368.75	38,192.92
● 2021	27,261.59	31,651.52	37,913.67	28,932.57	25,924.82	35,059.98	31,837.89	31,044.86	32,149.52	29,056.87	31,817.24	31,000.00
● 2020	17,378.93	16,430.71	17,869.30	20,542.48	31,038.16	18,903.13	18,405.97	20,675.51	25,042.21	25,505.07	26,421.59	26,399.02

Hartselle City Schools Real Property Tax Ad Valorem (Accrual Basis)



● 2025	532,134.54	1,320,469.5	1,369,763.6	799,020.25	62,577.74	48,338.40	16,725.03	7,690.22	7,472.62	942.19	124.27	7.95
● 2024	455,953.48	1,563,799.4	1,369,763.6	799,020.25	62,577.74	48,338.40	16,725.03	7,690.22	7,472.62	942.19	124.27	7.95
● 2023	447,138.90	1,364,537.1	1,762,529.5	519,579.38	64,660.93	42,137.50	12,727.49	7,877.94	-	2,379.51	110.29	248.68
● 2022	403,924.28	1,075,877.8	1,414,021.0	302,678.88	35,617.06	28,799.66	3,883.10	12,145.53	1,207.89	88.40	418.82	18.84
● 2021	455,257.29	943,980.46	1,280,356.6	462,243.24	55,130.66	23,748.82	7,031.40	1,310.84	158.08	28.87	-	-
● 2020	446,279.52	774,931.84	1,751,985.7	121,186.33	41,659.72	19,152.69	5,563.33	5,328.65	3,170.93	293.01	151.93	-

Hartselle City Schools Motor Vehicle Ad Valorem (Accrual Basis)



	October	November	December	January	February	March	April	May	June	July	August	September
● 2025	75,134.72											
● 2024	98,040.58	57,992.43	13,404.18	34,751.20	52,476.23	52,428.81	59,312.68	64,121.97	58,862.79	61,239.20	65,941.62	80,933.01
● 2023	64,930.46	54,309.98	14,235.88	34,840.45	51,068.30	56,547.05	52,667.06	66,084.50	60,553.11	58,841.18	66,170.67	83,554.10
● 2022	66,316.05	49,123.32	14,924.23	30,183.36	43,859.53	50,520.02	48,010.38	55,843.77	49,627.35	49,982.87	55,869.74	73,769.71
● 2021	67,692.92	43,075.73	12,824.36	25,340.45	36,560.14	43,331.69	41,336.22	45,980.78	46,999.03	43,966.75	48,148.22	62,785.04
● 2020	72,006.77	42,412.96	10,470.54	24,675.03	35,245.86	28,531.39	30,968.22	45,576.79	47,702.25	44,659.24	43,037.44	59,974.06