

Physical Science 8th

MRS. JONES



Email:

taylor.jones@hartselletigers.org

Room: 15

✨ E-mail is the fastest way to communicate with me!

Announcements:

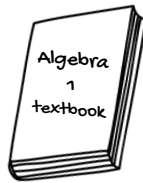
Stay in the loop by joining our class Remind list. Text the code below to 81010

Physical Science- @2f8fab4



Supplies:

1" binder with dividers
Pencils
blue/black pens
Notebook Paper
Metric Ruler
Calculator



Google Classroom:

Enter your class code to be added to your Google Classroom page. Daily schedules, homework, tests, and quizzes will be posted here. It is imperative that you check GC every day.



1st: 346442

3rd: 45skcsw

2nd: 8nq9733

Grades:

60%

Tests/Quizzes

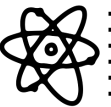
40%

homework & classwork



*Students and parents are encouraged to check Powerschool weekly. However, please do not expect grades to be updated daily.

Daily Procedures:



1. Be in your seat when the bell rings. If you are not, you are tardy.

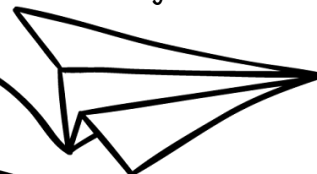
2. Complete the daily science starter.

3. If homework was assigned, turn it into the box, OR hit "TURN IN" on Google Classroom.

4. Get the previous day's work out and be ready to get started.



OUR YEAR AT A GLANCE



Quarter 1:

Nature of Science
Structure and
Properties of Matter
Atomic Structure



Quarter 2:

Chemical Bonding,
Reactions and Energy
Mixtures and Solutions

Quarter 3:

Forces and Motion

Quarter 4:

Energy
Wave Properties,
Electromagnetic
Radiation and
Information Technology



Rules, Expectations, & Classroom Policies

Class Material

- Come prepared with your binder, planner, **CHARGED** chromebook, and writing utensils.
- Chromebooks will be used nearly **every day**. However, if you are caught abusing this privilege (playing games, on YouTube, etc.), you will be assigned lunch detention.
- Only bring **headphones** when you are asked to have them.

Late Work, Extra Credit, & Retakes

- **Late work** is accepted for 50% (F) of the grade. You have one week to turn it in. It will be entered as a 0 until you turn it in.
- Assignments will be available on Google Classroom, along with daily videos of Mrs. Jones teaching (Videos of Class section)
- If you earn a D/F on a test or quiz, your parent/guardian must sign it. It must be returned to Mrs. Jones within 2 days of being passed back if you want to be eligible to **retake the test/quiz**.

Late work will be entered in the gradebook when I get to it. **DO NOT** repeatedly ask me to enter it 5 minutes after you turn it in.

YES!
NO
PE

Respect & Behavior

- Students will maintain a **respectful and positive attitude** toward the teacher and classmates.
- **No sleeping**. If you sleep, you will stand. You will only be warned once.
- **Cell phones** must be kept in your locker. Unless given specific permission, they will be **taken** and not returned until the **end of the day**.
- Sit in your **assigned seat** unless otherwise told.

Absences

- You have **ONE** day for each day absent to make up work. You must talk to the teacher and check Google Classroom to see what you missed. Check the make up folders as well.
- If work was due the day you were gone, it's **due the day you return**.
- Work will be entered in the gradebook as a 0 until you turn it in.

Tardy Policy

Being on time means you are here, in the room, with material necessary for class. You will be counted as **tardy** if:

1. are late **without** a pass



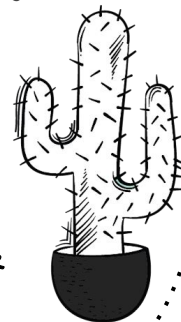
Homework Policy

You can expect to have homework assignments on a **weekly basis**. I expect all problems will be attempted and all work shown (**no work = no credit**). It is important that if you don't understand problems on a homework assignment, make sure to ask for help in class and correct your mistakes. There are two different manners in which homework points will be awarded.

1. I will collect homework assignments approximately **once week** and will check for **completion** as well as **accuracy** of work. These assignments will be awarded points.

2. I will also give **homework quizzes**. **homework quizzes** are worth **5 points**.

3. Students will be give homework on Monday and it will be due on **fridays**.



After your **3rd tardy**, you will receive a **detention**. You will be given detention **again** for the 4th and 5th tardy. After your **6th**, you will be given a **referral and ISS**.