

hi

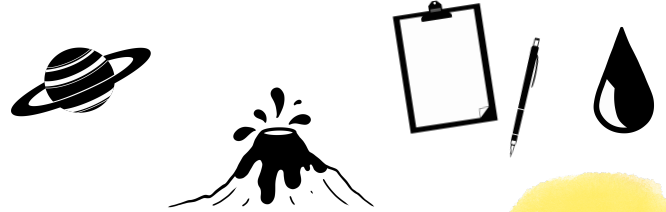
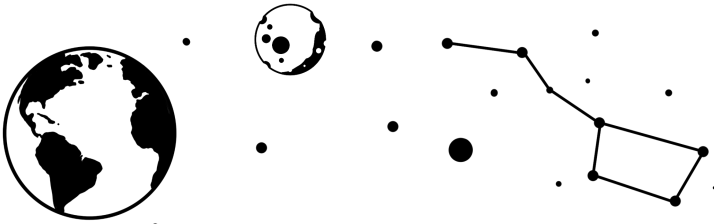
CONTACT INFO

EMAIL: debbie.blackwood@hartselletigers.org
ROOM #:209

Welcome

My name is **Mrs. Blackwood!**

EARTH AND SPACE SCIENCE



Expectations

BE RESPONSIBLE

Come to class on time and be prepared with class materials. Follow class rules and procedures.

BE RESPECTFUL

Respect yourself, your peers, your teacher, and class supplies. Respect is the foundation of this classroom!

DO YOUR BEST

Put effort into your work and participate in class. It's ok if you try and fail but it's not ok to fail to try!

COURSE OBJECTIVES

- Illustrate the lifespan of the sun
- Compare theories for the formation and changing nature of the universe
- Evaluate the life cycle of stars
- Predict orbital motion of objects in the solar system
- Explain the relationship of the seasons to the tilt of the Earth's axis
- Evaluate scientists findings that relate to space exploration
- Plate tectonics
- Earth's bio and geological history
- Earth's Systems
- Rock Cycles

Procedures

Composition Notebook

Notebook Checks on Fridays

WARM-UP

Short exercises, quick writes, word problems, etc...

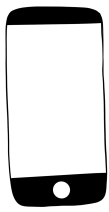
CLASS WORK

Group work, Independent working time, notes, etc...

CLEAN UP

Pick up materials, return any books or items to the correct location

Supply List: Composition Notebook, Pens/Pencils, Colored Pencils

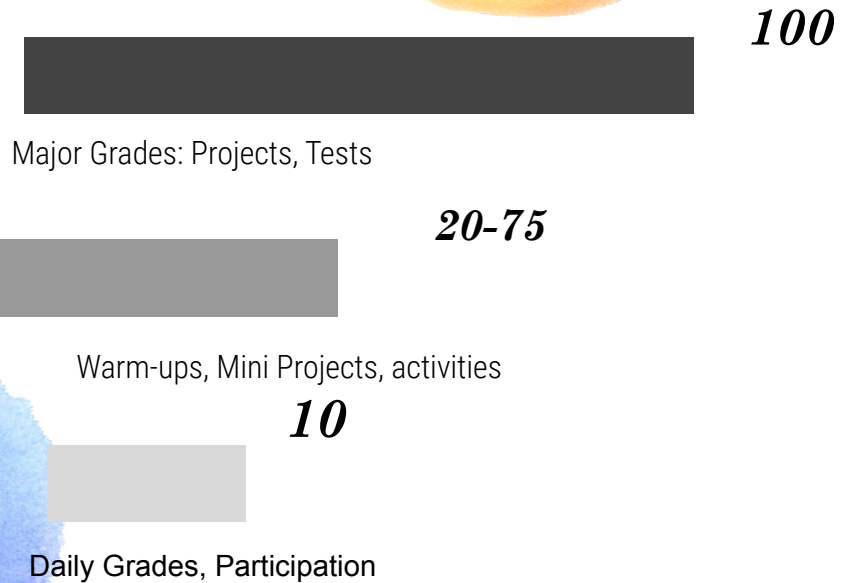


TECH POLICY :

When the bell rings to begin class, cell phones must be put away, out of sight, and silenced. **Students may only use cell phones during class if the instructor has made it clear that phone use is acceptable to supplement the lesson.** If a student violates the cell phone use policy by having a phone out during instructional time, the cell phone will be confiscated.

Grading

In this course your grades are calculated by categories. Test and major projects/assignments count 60% of the final grade. Classwork or homework counts 40% of the final grade. Assignments are given point values regardless of which category.



ABSENT?

When you are absent, make-up work is your responsibility. You should check GoogleClassroom for your assignment. Scheduling make-up tests is also your responsibility. The maximum amount of time allowed to make-up a test is one week



MAKE UP WORK

Make up work needs to be completed at home. It is the student's responsibility to inquire about any missed work. Check Google Classroom Daily!! All handouts will be in the extra copies basket.

<https://tinyurl.com/yh8y5anx>

JOIN GOOGLE CLASSROOM

This link will take you to all Google Classroom Codes for each period.