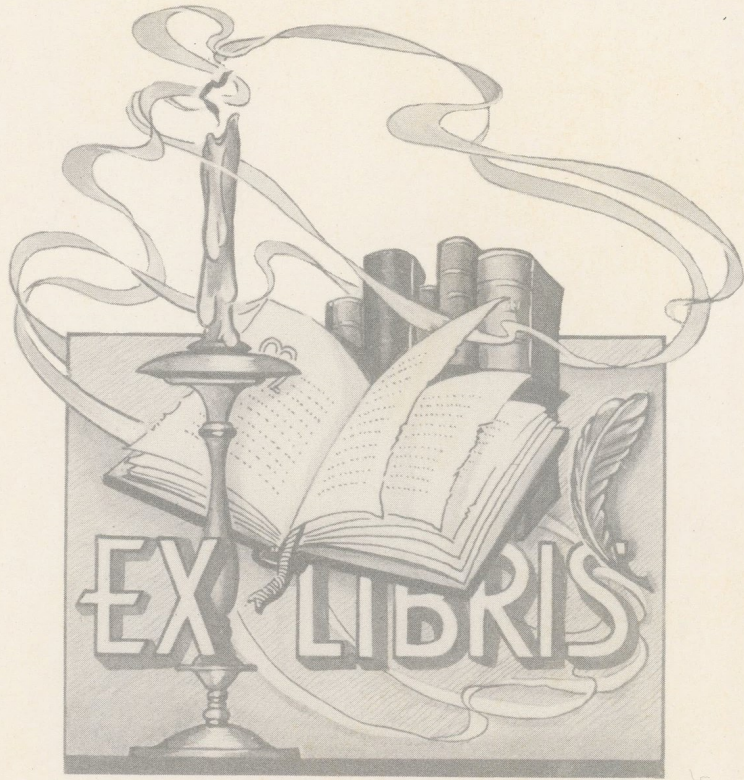


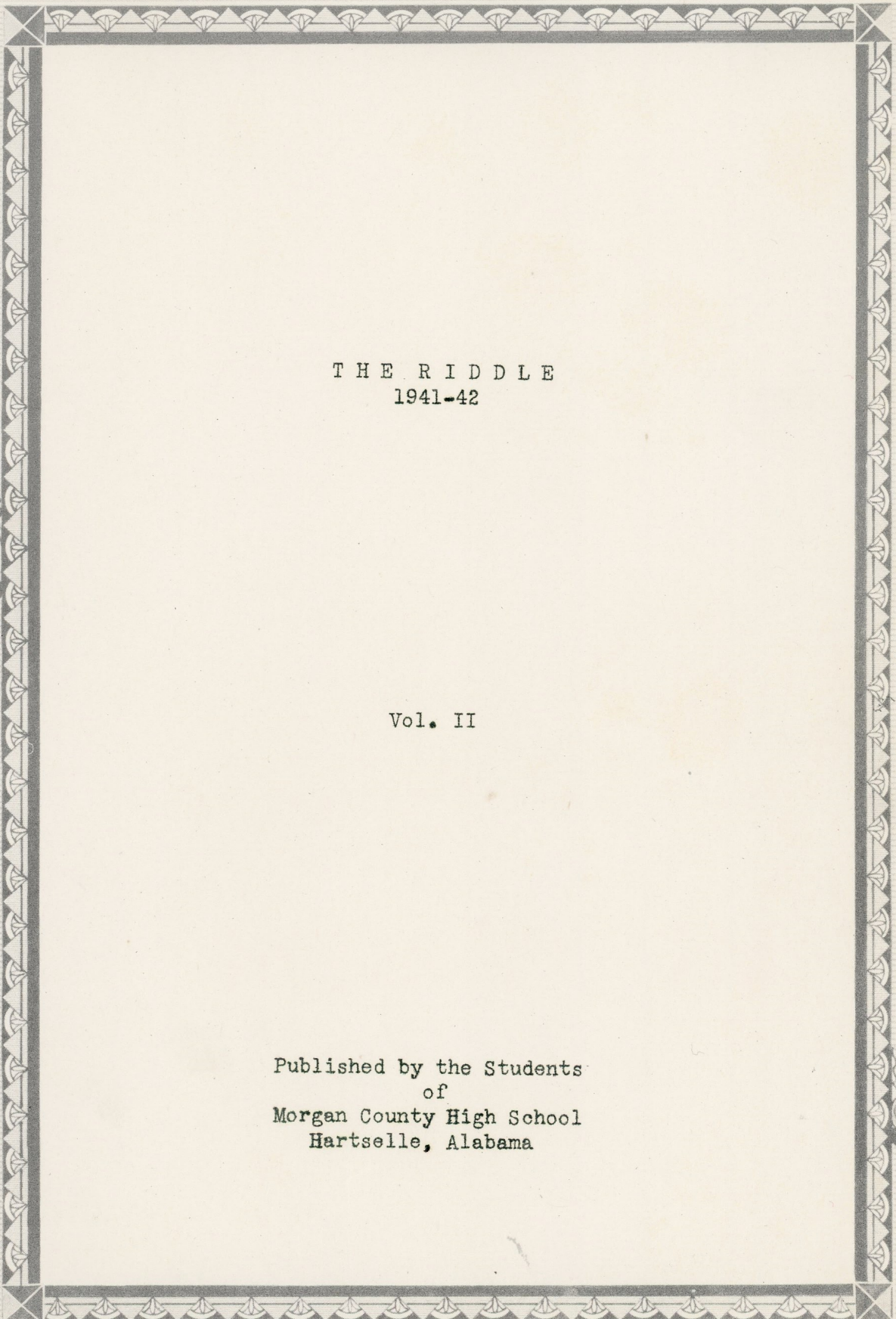
The Riddle









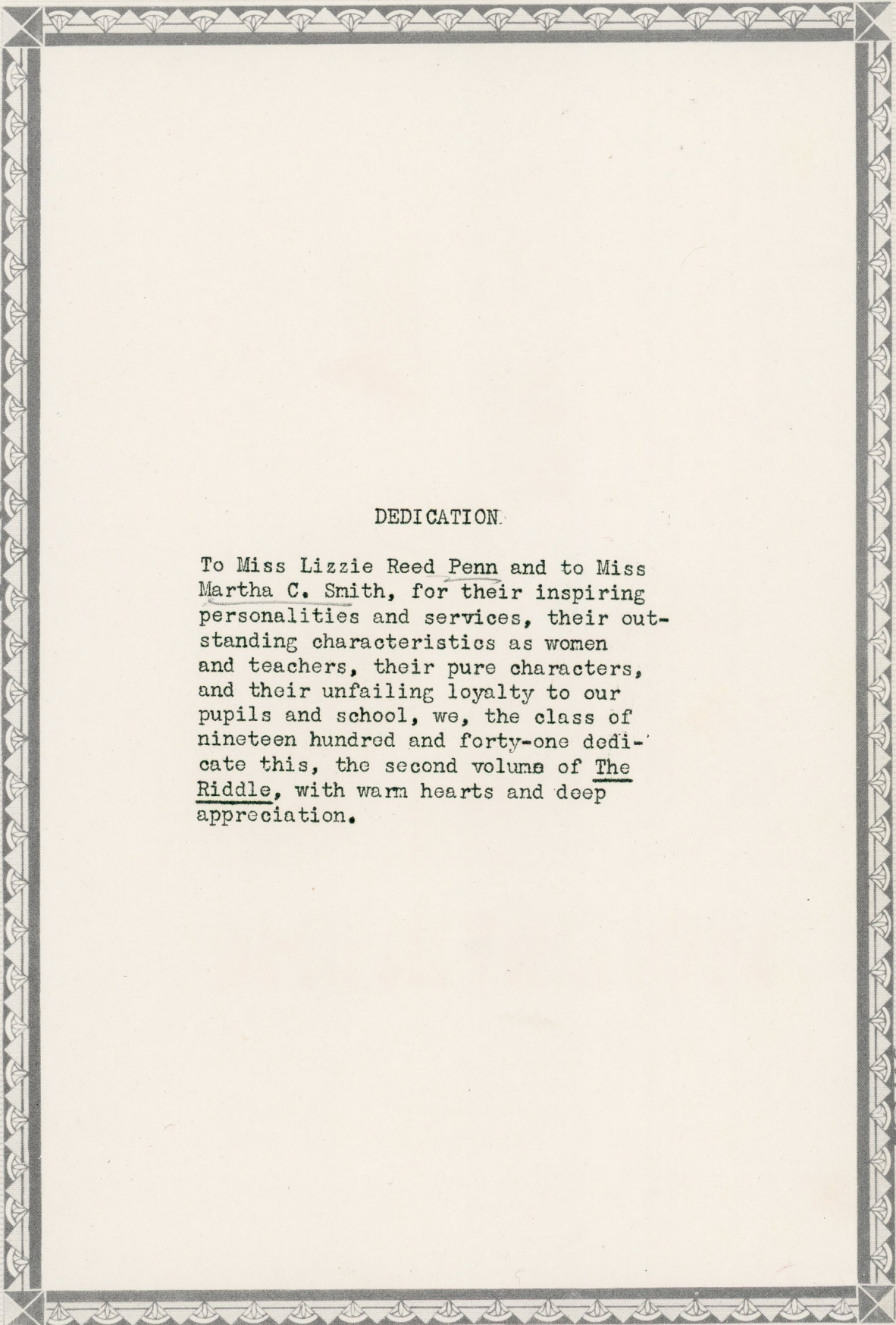


T H E R I D D L E  
1941-42

Vol. II

Published by the Students  
of  
Morgan County High School  
Hartselle, Alabama





DEDICATION.

To Miss Lizzie Reed Penn and to Miss Martha C. Smith, for their inspiring personalities and services, their outstanding characteristics as women and teachers, their pure characters, and their unfailing loyalty to our pupils and school, we, the class of nineteen hundred and forty-one dedicate this, the second volume of The Riddle, with warm hearts and deep appreciation.





# A ADMINISTRATION

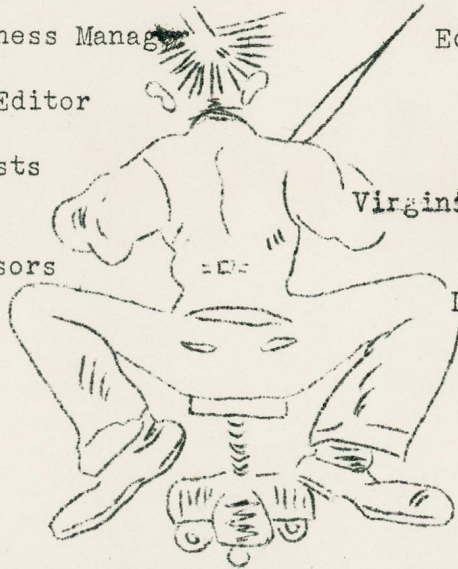


## FACULTY

W. J. Terry	Principal
Lizzie Reed Penn	English
Jenny Lind Gatlin	Mathematics
Martha C. Smith	Commerce
Grady Long (First Semester)	History, Coach
Mrs. Beulah Howle (Second Semester)	English
Bert Murphree	Science
Lucile Dobson	Library
Novel Miller	Physical Education
R. C. Browne	Vocational Agriculture
Effie Lou Gaines	Vocational Home Economics
Thomas Gregory	Physical Education
Mrs. Phil Wasson	Jr. II
Elizabeth Royer	History, Jr. I

## YEARBOOK STAFF

Editor-in-Chief	Zelma Payne
Associate Editor	Roger Hagans
Sr. II Editor	Bevelye Barclift
Sr. I Editor	Rachel Pattillo
Business Manager	Edward Stephenson
Art Editor	Junior Woodard
Typists	Hal Jean Blair Virginia Claire Bailey
Advisors	Martha C. Smith Lizzie Reed Penn







SENIORS



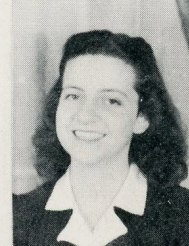


S  
E  
N  
I  
O  
R  
S



Sponsor

1  
9  
4  
0  
-  
4  
1





## W H O ' S W H O

Most outstanding member of the Sr. III Class  
Roger Hagans

Most popular boy in school.....Roger Hagans

Most handsome boy.....W. P. Newman

Best natured boy.....Lloyd Burns

Best boy athlete.....Dudley Puryear

Quietest boy.....Charles Dorr

Most in love.....Anne Speake

Biggest heart-breaker.....Gurney Gene Lackey

Wittiest pupil.....Doug Summers

Loudest pupil.....Rodney Hagans

Neatest boy.....Gurney Lackey

Most dignified senior.....Roger Hagans

Greenest freshman.....Sarah Jo Putman

Best all-round boy.....Lloyd Burns

Most popular girl in school.....Frances Browne

Prettiest girl.....Frances Browne

Best-natured girl.....Frances Browne

Best girl athlete.....Louise Parker

Best all-round girl.....Frances Browne

Quietest girl.....Jeffie Brake

Biggest flirt.....Clara Boyce Larkin

Most haughty girl.....Margaret Gordon

Most intellectual student.....Roger Hagans

Most bashful student.....Lloyd Burns-Jeffie Brake

Best dressed girl.....Hal Jean Blair

Worst grumbler.....Rodney Hagans

Most attractive girl.....Frances Browne

Most cheerful.....Lottie Wilson

Worst pest.....Sarah Jo Putman

Pupil who can act the dumbest....Talmadge Mann

Pupil who has the most alibies...Roger Hagans

Best politician.....Russell Terry

Biggest bluffer.....Rodney Hagans

Most musical.....Harry Currier

Most independent.....Margaret Gordon

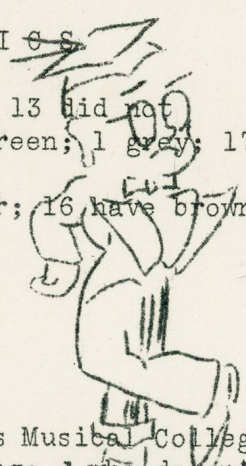
Most talented.....Roger Hagans



BERNARD McCUTCHEON: F. F. A.  
 EDWARD MAHAFFEY: Glee Club  
 RUTH MULLINS: F. H. A., Glee Club  
 JAKE NEWTON: Vice President Senior Class  
 ZELMA GENE PAYNE: National Honor Society, The Riddle Staff,  
 Band, Glee Club, Commercial Club, Dramatic Club, F. H. A.,  
 Vice President Student Representative Council, 1939-  
 1940, Good Citizenship Girl, 1940-41  
 WILLARD POPE: 4 H Club  
 TRUMAN PRAYTOR: Football, Glee Club, Dramatic Club,  
 Commercial Club  
 DUDLEY PURYEAR: President Junior Class, "M" Club, Foot-  
 ball, Dramatic Club, President Student Representative  
 Council  
 TASKER RYAN: Football, F. F. A., Soft Ball, Basketball  
 A. C. SHARP: F. F. A.  
 ANNE SPEAKE: Dramatic Club, Glee Club, Commercial Club,  
 F. H. A., National Honor Society, Debating Team, Pep  
 Squad, Head Cheerleader  
 DOUGLAS SUMMERS: Football, Basketball, Representative to  
 Student Council, Secretary Sophomore Class, Soft Ball,  
 Tennis Club, "M" Club  
  
 LOUISE PARKER WALLACE: Glee Club, F. H. A., Basketball,  
 "M" Club  
 JIMMIE WIGGINS: Football, Basketball, Glee Club  
 HELEN WHITTEN  
 MARTHA WHITMAN: National Honor Society, Debating Team,  
 Pep Squad, F. H. A., Dramatic Club, Glee Club,  
 Commercial Club  
 LOTTIE WILSON: Dramatic Club, F. H. A., Commercial Club

#### STATISTICS

22 Seniors entered school together; 13 did not  
 There are 3 pair of hazel eyes; 2 green; 1 grey; 17 blue  
 14 brown  
 Three are blondes; 1 has auburn hair; 16 have brown hair;  
 8 have black hair.  
 Average weight: 148 lbs.  
 Average height: 5' 7"  
 Favorite orchestra: Kay Kyser  
 Favorite color: Blue  
 Average shoe size: 6 $\frac{1}{2}$   
 Favorite radio program: Kay Kyser's Musical College  
 6 are going to college; 1 not talking; 1 who doesn't know  
 Favorite posture is standing straight; for two persons it  
 is sleeping.





3 wish to be old maids or old bachelors; 29 say definitely  
no; one will wait till the right one comes along.  
Favorite movie star is Mickey Rooney.  
Average age of the class: 17  
Favorite singer: Bing Crosby  
32 wish Macbeth had killed Milton instead of King Duncan;  
4 were glad he didn't.  
Only 9 wish they could stay in school  
20 students live in town.  
All have been absent or tardy.  
16 were born in Hartselle.  
16 were born in Alabama.  
41 entered the freshman class together; now 34 are seniors.  
Mrs. Louise Parker Wallace was the first to enter the  
field of matrimony.

Hal Jean Blair

C L A S S P O E M

The time has come when we must part,  
This class of '41.  
But now let's rhyme a little while,  
And have a lot of fun.

Let's put each famous senior  
In a jingle just to fit.  
Listen closely for your name.  
We hope it has some wit.

First comes little Annie,  
The one who's most in love.  
But really, we don't blame her  
For being a turtle dove.

Then comes Louise Wallace,  
The fair bride of our class.  
Perhaps there's lots who envy her,  
But it seems our luck has passed.

Zelma is the studious one,  
Our "Good Citizenship Girl."  
But we have her future all planned.  
A wife--the best in the world.

Now we have Oleta,  
The shortest in our class.  
She gets around in a hurry  
Her energy can't be surpassed.



Next is little Jeanie,  
With the light brown hair,  
She's the baby of our class.  
But she doesn't seem to care

Of our treasurer we must be proud.  
What would we do without Dot?  
She's really a miser, there's no doubt.  
She's made us money--a lot.

Beanie is our stand-by.  
She helps to the Nth degree.  
We couldn't get along so well  
Without her, you can see.

And now comes our friend Opal.  
She never has much to say.  
But we always know when she's around.  
She always seems quite gay.

Sarah is the tallest one.  
I think she's swell myself.  
She never talks so very much.  
But her red hair speaks for itself.

Frances is Madam President.  
She's led us through a hard year.  
But maybe now she can settle down,  
And not have to go in high gear.

Jonnie is our only true blonde.  
It's real--we're sure of that.  
We've heard a rumor that men like blondes.  
Umm--we must look into that.

Margaret won't be with us long.  
A husband she will guide.  
We hope she'll be quite happy  
As they walk through the world, side by side.

Jo Groover is a little lass.  
We couldn't do without her.  
And when she says she'll do a thing,  
We surely never doubt her.

Fannie McCall is another good gal  
Through the years she wears a smile.



We hope she'll continue to travel thus.  
For a smile is a thing worth while

Then we'll think of Helen,  
A hard worker, there's no doubt.  
She swings a wicked fountain pen  
And really turns the work out.

What of Lottie Wilson.  
We could never forget her.  
We hear that she is all reserved,  
By a certain out-of-town Sir.

Jeffie's the one who is seen but not heard,  
In everything she does.  
We can all be assured, no matter what,  
With her we can never fuss.

Evelyn is the jolly one.  
When her eyes of darkest brown  
Begin flashing around at everyone.  
We have to remove our frown.

No temper at all does Elizabeth have,  
At least we've never seen it.  
To her some credit we'll have to give.  
We willingly ordain it.

Mildred is another jolly one.  
She can always make us grin  
With her cracks and jokes about everything,  
Including her being thin.

Ruth isn't noisy.  
The teachers will like this.  
Some of us should profit  
By her action, we insist.

The boys in our class are one fine lot.  
And we know we'll ever forget-them-not.

Edward's the jester, in full swing.  
With his "I don't get it" line.  
You will always enjoy it though--I guess.  
At his actions you'll have to resign.



Doug's alibies are always best.  
We wish ours were as good.  
Did he always manage to get by?  
And do we think he should?

Truman is our freckled guy.  
But he doesn't seem to mind.  
I guess the world would be better off  
If we had more of his kind.

Jessie Ray--the woman-hater.  
And try as hard as they might  
The girls just can't get his attention.  
It really is a sight.

Roger is the "big-cheese" guy.  
Scholastic leader of our crew.  
We hope he'll continue this all through life.  
There's nothing he can't do.

Willard used to be a little man  
But now he's grown up tall.  
And we have heard from several sources  
That for him, some girls do fall.

The faithful ole' bus driver  
Is independent Jake.  
But we never know exactly if  
He's sleeping, or awake.

Edwin once was our soldier guy.  
But he deserted for education.  
We really admire him lots for that  
Just keep up the reputation.

Another one the love-bug has.  
But we know you don't blame him.  
It's Mr. James Lee Wiggins  
And he wants no one to claim him.

And then comes "Lightening" A. C. Sharp  
Without him what would we do?  
He always has a funny question  
Whether old or whether new.

Dudley--the brain, the shark, the wizard.  
It's easy for you to see.



But don't you dare to look too close,  
You might not agree.

Bernard is one we can't do without.  
'Cause he drove the bus to school.  
He always helped when we needed him  
At least, that was the rule.

And now that this is ended  
We'll turn off the muse's dial.  
But let's don't forget to always  
Carry with us that smile.

Martha Whitman

### P R O P H E C Y

As I look through these Future Sands of Time, the grains all possess personalities and character of their own. As these grains flow silently down with the rest of time, some of them are labeled and very familiar. Here comes one now that seems very shy at first glance, but Mary Frances Bean has achieved that ambition that was always hers--manager of a Ten Cent store. There goes a bright and shining face...Let's see who it is. Well, if it is not Jean Blair, and where did she get that paper straw? They say she owns a drug store too. I see by the next grain, Jeffie Brake, that the business world was revolutionized by her ingenious secretarial work. Here comes an old friend. She is Johnnie Brake, who is now County Superintendent of the NYA program. The next familiar face is that of Miss Frances Browne, celebrated mistress of Howling Valley. She is surrounded by a network of microphones and photographers. Well, well, look who is flowing by. It's Opal Callahan, that now famous economics professor, along with a few other personal achievements. Here comes one with a kind and gentle look all dressed in white. She is Elizabeth Evans, head nurse at Mayo's Hospital. The next one is just what we expected. She is Margaret Gordon, not quite as lively as she was, but she had descendants to show she has been here. She and her husband are off for a week, sailing in the blue Carribbean. How many times have I seen this next face working studiously over Shakespeare? In other words she is Martha Jo Groover, who has through many hardships and privations





founded the largest and most prosperous Chicken Brooders in her neck of the woods. And now here comes the masculine part of the generation, none other than the President of the U. S. A., Roger Hagans--the first President from Alabama. A little corrupt since he set some of his brothers in the higher offices. Here comes Farmer Browne; no it isn't. It is Jessie Ray Halbrooks, all dressed in straw hat and overalls. He was the star producer of peanuts for his county last year. The next familiar grain of sand is labeled Evelyn Hammond. She is what we used to call an old maid. It seems the members of the faculty of her local high school interrupted her love affairs. Who is that with the bright and shining face? Well, I believe it is Oleta Hartselle. No wonder she is so happy. She is on her way to Niagara Falls at last. That great electric welder, Edwin Higdon, comes passing now. He has accomplished engineering feats never dreamed of before his time. The next known personality is president, vice president, secretary, treasurer, comptroller-general, owner, and manager of a prominent music shop. That name, Dot Holder, has been the signature on many a good check. Our next recognizable character is Mildred Howell. At this time she and her friend, Mrs. Wallace, are discussing the problems of married life, in which Miss Howell is still desperately trying to gain membership. Who is this next picture? Well, what do you know? She is Sarah Johnson, known from coast to coast for her perfection in modeling fine clothes. Mary Frances McCall, who is a member of the Medical Corps in the CCC camps. She is happily married and really doing fine work in her field. Here comes an aviator. No, it isn't. It is Bernard McCutcheon who is now driving one of Grayhound's largest buses. Our next decorated grain is Ed Mahaffey, now in his third divorce case. Well, maybe he will find the right girl some day. Our girl who has achieved fame in New York, designing hair "dos", Ruth Mullins, comes by now showing her latest do, which is really a killer-diller. Well, Jake Newton has really made a name for himself. He is now the president of a large paint and varnish works. We are sure his last years in high school had much to do with his success. Here comes Louise Wallace. Her husband is a retired army officer, and her off-spring are some of Uncle Sam's best. We see Zelma Payne directing the largest all-girl orchestra in the country. At times she plays her golden voiced saxophone just to make the music more penetrating. Willard Pope, the star athlete, now passes in parade. He made the mile in ten minutes flat, almost the speed of a Deer Fly. Oh, here is something blurred. It is none other than "Hamburger" Praytor,



the originator of the new sandwich called the swishburger. A. C. Sharp has gained universal popularity by learning how to comb his hair. He now uses and manufactures, through his special patent, that special hair-stickum we see advertised so much now days. Our next subject is the great senator from Alabama, Anne Speake. She makes the Senate obey her wishes with her hair-raising, blood-curdling orations. You can see the devils playing in the next fellow's eyes. He is Doug Summers, now a trusty at Kilby Prison. He sits around and thinks of something mean to do. There is Jimmie Wiggins still studying vigorously on his steel course. His advice to others who plan to study it is, of course, "Don't do it, boys." Helen Whitten, the girl who has taught many prominent secretaries in her time, has a business school of her own. What is this I hear? It is sweet and soothing. Everyone has heard about Martha Whitman's success in the advertising department of the Radio Corporations of America. She is now singing into one of those world-wide hook-ups and it is not bad, I am here to say. Confidentially, there are not many more familiar faces, but I do see one coming by that is photographed more often than any other girl. That smile of hers has appeared on many advertisements of face creams, tooth past and the like,--Lottie Wilson. Here comes one that hasn't changed much. She is Miss Lizzie Reed Penn, who is still head of the English department. Her name is still Miss Penn.

Dudley Puryear

## CLASS HISTORY

A soft rain fell on the morning that we entered high school, and at the end of the shower, a rainbow could be seen in the distance. Maybe this rainbow is what gave our class a personality of its own. You can easily see why our four year's work can be compared to a four year's journey "over the rainbow". We were a group of forty-six very green and scared "rats" who started on the journey, but after a short time we became used to the mad rush of people in the halls, the confusion of getting to the right class on time, and the roars of the upper classmen. We started on our journey in great style, with many members doing outstanding work in school organizations. We were very enthusiastic about our work and worked upward with patience. By the end of this school year we were quite settled and felt that we had made some advancement toward the top.



To the sophomores the privilege of studying English under Penn  
Penn  
To the juniors our unexcelled ability to understand Macbeth.  
To Mr. Terry we leave Roger's surplus hair.  
To Miss Penn we leave the privilege of someday getting a class that will be as good as the class of '41  
To the rest of the faculty we leave the privilege of getting a special request from the county board of Education for a new building in which there will be rooms large enough for both the teachers and pupils.  
To the individual pupils we hereby bequeath:  
To Mary Kate Reeves we leave Mary Frances Bean's ability of being a good stenographer and all round girl.  
To Rachell Pattillo we leave Jean Blair's ability to have two boy friends at once.  
To Bevelye Barclift we leave Jeffie Brakes's ability to keep still and quiet.  
To Beth Howell we leave Frances Browne's musical ability.  
To Betty Jo Stewart we leave Martha Jo Groover's ability to flirt.  
To Charles Dorr we leave Roger Hagans ability to make good grades.  
To Gurney Lackey we leave Jessie Ray Halbrooks ability to be a woman hater.  
To Evelyn Poole we leave Sarah Johnson's height.  
To Mimi Groover we leave Martha Whitman's flirting ability to attract John Paul Puckett.  
To Billy Murphree we leave Jimmy Wiggins ability to hold his girl when he gets her.  
To Virginia Claire Bailey we leave Lottie Wilson's ability to laugh, and may she use it.

In Witness Whereof, We have set hand a seal upon this, my last will and testament, written upon one sheet of paper this twenty-third day of May, One Thousand Nine Hundred Forty-one.

Signed, sealed, published, and declared by the above named testatrix, as and for our last will and testament, in the presence of each other, have herunto affixed our names as attesting witnesses.

Tommy Kimbrough

Dudley W. Puryear  
Roger Hagans



With vacations over, we came back to school, this time as sophomores. It seems as if each of us returned with a brighter outlook about our work. It is true that we felt superior to the freshmen, and from the way they acted they realized our superiority. Our sophomore year passed very quickly and vacation time came again. This time we left school with plans for a better future.

On September 11, 1939, we began our studies as juniors. We had gained more privileges by this time, but nevertheless, we looked forward to having senior privileges too.

At last our senior year came and forty-one pupils, not necessarily dignified, took their places in the senior classroom. There was much to be done so we soon settled down and went to work. During the year we put some of our accumulated wealth to good use by painting our classroom none other color than green. But mind you, do not compare this color to the pupils in the senior class. By this time we had nearly completed our journey to the end of the rainbow, we felt that we were at the bottom again, and indeed we were. We realized that our next journey would not be one of just four years, but one that would continue a lifetime.

Now that the time for our departure draws near, we realize how much fun we have had in the past. Time marches on and we must leave, so to those who are left behind and to our dear old Alma Mater, we say goodbye.

Jo Groover

CLASS  WILL

Last Will and Testament of the Senior Class of Morgan County High School, County of Morgan, and State of Alabama.

Be it remembered, that We the Senior Class of Morgan County High School, being of sound mind, memory and understanding, and realizing the uncertainty of life, do make, publish, and declare this as and for my last will and testament, hereby revoking and nullifying any and all former wills and testaments, or writings in the nature thereof, by us at any time therefore made.

We hereby will and bequeath the following possessions:  
To the seventh grade we leave our ability to sing, "God Bless America"  
To the eight grade we leave our ability to produce big football players.  
To the freshmen our pleasing conduct in the library.



G I F T O R I A N ' S S P E E C H

My heart leaps up and I behold a rainbow in the sky,  
The time for emptying the pot of gold is really  
drawing nigh,  
Within this pot of golden hue,  
There is a gift for each of you.

Martha Whitman

To our singing lady we present a map of Florida,  
Her mind seems to wander, but it never gets any farther.

Lottie Wilson

Take this lemon Lottie, suck it good and long.  
After this is done, you won't be able to laugh so long.

Opal Callahan

To Opal we give this pack of chewing gum,  
She always seems to chew it and have lots of fun.

Mary F. Bean

To "Beanie", the stenographer of this class,  
We give a shorthand pad to make her feel in the right  
class.

Hellen Whitten

We hear Hellen likes to read,  
So maybe this book will suit her need.

Julian Blackwood

We give you a college diploma to ease your tension,  
We hear you are afraid you will get out of college  
only in time to receive your "old age" pension.

Edwin Higdon

We give you this water from the fountain of youth so  
fine,  
From your interest in the Sr. I's, we thought you might  
like to turn back the pages of time.

Evelyn Hammond

To Evelyn we give this gift from Elmore's store,  
We feel sure she's seen this before.

Elizabeth Evans

We give her this embroidery work to do while at home  
she sits,  
It seems the job of being a housewife she best fits.

Edward Mahaffey

Before the operetta we did not know he could sing so  
fair,  
But now we'll give him a copy of "Jeanie with the  
Light Brown Hair."

Jake Newton

Jake has always been known as our slow man,  
But with this stick of dynamite, we believe he will  
move from this stand.



Louise Parker

Although she's a married lady she hasn't become an  
"old hen".

But in case she does she might need this rolling pin  
Zelma Payne

Although our futures may seem vague and dark,  
Zelma will survey them with this tri-pod, and be  
happy as a lark.

Truman Praytor

The name, "Truman "Hamburger" Praytor will never fade,  
But to him we give a hot dog to try someone else's  
trade.

Dudley Puryear

We know you are the school's worst pest,  
We think some insect powder for you will be best.

Tasker Ryan

Because of his love for Patrick Henry and his desire  
for someone to preach,  
We give him a copy of the famous "Liberty or Death"  
speech.

A. C. Sharpe

To "Lighting Sharpe" who is forever late to class,  
We give a watch so he won't have to wait to get a  
pass.

Douglas Summers

Because of Doug's desire to play during chemistry  
experiments,  
We give him these chemicals, so he may have an  
explosion without Mr. Murphree's interference.

Jimmie Wiggins

To Jimmie we give a green Chevrolet,  
He seems to enjoy sitting in one in front of Tanner's  
every day.

Oleta Hartselle

Although little and maybe a little fatter,  
She always reaches for the higher things, so here's  
a ladder.

Jessie Ray Halbrooks

In economics Jessie simply can't be beat,  
So here's a book, we're sure he'd never cheat.

Ruth Mullins

Ruth is our girl with the curly hair,  
We give her some hair straightener, because we  
feel it isn't fair.

Bernard McCutcheon

Bernard is the school bus driver for our grounds,  
Maybe he has hopes of bigger things and will drive  
this Greyhound.



Tommy Kimbrough

Tommy seems to be getting so fat,  
Maybe he should read this nursery rhyme about Jack  
Sprat.

Mary F. McCall

We know her eyes are from specs free,  
So we give her these glasses so she can CCC.

Willard Pope

He seems to be a little small in size,  
So we give him a yeast cake in hopes it will make  
him rise.

Jean Blair

"Where Was I?" we often hear her hum and say,  
To you we give a diary to keep a record of each day.

Jeffie Brake

She's always still and voted the quietest in the  
class,  
The noise from this may make her feel rash.

Johnny Brake

We know she isn't going to a masquerade,  
But we understand she has a unknown lover in this  
kind of clan.

Francos Browne

Though England may never her music heed,  
She seems to have a King George of American breed.

Margaret Gordon

We hear Margaret will soon be wed,  
So to her we give a cook-book so she won't burn her  
husband's bread.

Jo Groover

Tho' her school bus days will soon end,  
We give her a bus so she may continue to ride with  
her unknown friend.

Roger Hagans

A report of A's he always had to discuss,  
So to him we give some F's to share with the rest of  
us.

Dorothy Holder

As treasurer she always held our money tight,  
If she squeezes this piggy bank as tight, he will be  
a sight.

Mildred Howell

She gets long distance telephone calls we have been  
told,

So for her this kind of ring may have been sold.

Sarah Johnson

To the short, fat lady of our class,  
We give this diet on how to loose excess pounds fast.



Our pot of gold is empty now,  
Its treasures all are gone,  
And will you take this little now,  
That they all may linger long.  
Anne Speake

### C L A S S S O N G

Down through the years together  
We've come with a smile and song.  
In fair or stormy weather,  
No matter the day how long.  
The best part of life is gone now,  
But happiness thrills us through.  
And although we say good-by now,  
We'll always be loyal to--



Our dear old classmates,  
Loyal every one.  
We've worked hard and we've struggled,  
But always had lots of fun together,  
Now the journey's ended,  
And all our work is done.  
We'll sing this toast to each of us,  
The class of '41.

### W H A T A L I F E Senior Class Play

#### SYNOPSIS OF ACTS

Act I--The Principal's office in Central High School.  
A morning in spring.  
Act II--The same. Later  
Act III--The same. Later

#### CHARACTERS

Miss Shea--Frances Browne	Mr. Vecchitto, a parent
Mr. Patterson--Jake Newton	A. C. Sharpe
Miss Pike--Oleta Hartsello	Barbara Pearson--Anne Speake
Bill--Edward Mahaffey	Mr. Bradley--Tommy Kimbrough
Mr. Nelson--Roger Hagans	Miss Wheeler--Martha Whitman
Miss Eggleston--Margaret Gordon	Mr. Ferguson--Jimmie Wiggins
Miss Johnson--Mary F. Bean	Mrs. Aldrich--Zelma Payne
Henry Aldrich--Dudley Puryear	
Mary--Martha Jo Groover	
Gertie--Hal Joan Blair	
George Bigelow--Russell Terry	
Other Students--Lottie Wilson	
Willard Pope	





JUNIORS





**SOPHOMORES**



S R. II C L A S S

CLASS OFFICERS: President, Margaret Sample; Vice President, Mary Francis; Secretary-Treasurer, Bevelye Barclift; Sponsor, Jenny Lind Gatlin.

CLASS ROLL: Doris Ashworth, Virginia Claire Bailey, Bevelye Barclift, Beval Bennet, Hubert Betterton, Julian Blackwood, Margaret Lou Brindley, Lloyd Burns, Roberta Clarke, Frances Crowe

Beatrice Dean, Charles Dorr, Harold Eason, Mary Francis, Lois Grisham, Leonard Hagans, Macon Hardwick, Sim Howell, Jr., Tommy Kimbrough, Gurney Jene Lackey, Ben Legg, Jr., Paul Lemmond

Hudson McElroy, Evelyn Massey, Emily Moore, Fay Mullins, Billie Murphree, W. P. Newman, Katherine Norwood, Tasker Ryan, Margaret Rodgers, Hal Roberts, Jean Sample, Margaret Sample, Helen Ruth Smith

Leo Templeton, Russell Terry, Matthew Wiggins, Hollis Williams.

D O N ' T T A K E M Y P E N N Y  
Junior Play

SYNOPSIS OF ACTS:

Act I--Living room of the Pringle home, in a small city.  
One Saturday in late June. 8 A.M.

Act II--Same about 4 P.M.

Act III--Same about 8 P.M.

CHARACTERS:

Sally--Virginia Claire Bailey  
Norman Porter--Hubert Betterton  
Penny--Bevelye Barclift  
Caleb--Hudson McElroy  
Mark--Gurney Gene Lackey  
Mavis--Margaret Sample  
Lydia--Helen Ruth Smith  
Joanna--Roberta Clarke  
Kerry--Russell Terry

Greg--Macon Hardwick  
Gram--Lois Grisham  
Monsieur Henri--Harold Eason  
Claire--Frances Crowe  
Elsie--Faye Mullins  
Lucille--Doris Ashworth  
Red--Hollis Williams  
Harrison Day--Leo Templeton

S R. I C L A S S

CLASS OFFICERS: President, Edward Stephenson; Vice-President, Margaret Montgomery; Secretary-Treasurer, Dot Owen; Sponsor, Bert Murphree.

CLASS ROLL: Arthur Bean, James Blackwood, Euvie Blevins, Luvelle Childers, Holland Compton, Christine Couey, Marvelone Couey, Bryce Curry, Harold Elliott, Jean Evans

HALF  
WAY





**F**RESHMEN



Laverne Floyd, Margaret Francis, Gregory Glasscock,  
Laurine Gordon, Louise Gordon, Willie Ruth Groover, Truman  
Hill, Margaret Sue Haynes, Trannie Mae Jarrett, Kathleen  
Johnson

Frances Kimbrough, Lucile Locke, Roylean Long, Talmadge  
Mann, Charles Massey, William McCutcheon, Bobby Mixon, Mar-  
garet Montgomery, Frances Morgan, Jack Norwood, Dot Owen  
Rachel Pattillo, Travis Powell, Rachel Praytor, John  
Paul Puckett, Ruth Bradley Puckett, Mary Kate Reeves, Artie  
Roy, Arvil Sanders, Douglas Sharp, Ferrell Shipp, Elaine  
Slate, Arthur Smith, Jr., Ruth Smith, Ola Mae Speakman,  
Edward Stephenson, Betty Stewart

Ester Tapscott, Jessie Tapscott, Newton Thrasher,  
Erlene Waddell, Rachel Ward, Paul Weinman, Mary White, A.M.  
Whitten, Martha Wiggins

J R. III C L A S S

CLASS OFFICERS: President, Carol Pickens; Vice-President,  
Jimmie Bennett; Secretary, Harry Currier; Treasurer, John  
Lockhart; Sponsor, Novel Miller

CLASS ROLL: Jimmie Bennett, Christine Black, Warren Brindley,  
Ruth Neal Britnell, Helen Britt, Jewel Cocks, Chester  
Collins, Rebecca Collins, Elree Couey, Irene Couey, Sarah  
Couey, Harry Currier,

Vivian Dobbs, Truman Eubanks, Margaret Giles, Virginia  
Glasscock, Kathryn Gray, Mimi Groover, George Hammond,  
Eva Lean Hardiman, Minnie Lee Hartselle, Mary Katherine  
Harvel, Bryant Henarix

Lavern Keel, Elsie Kipple, Charles Lackey, Burford  
Lawrence, Jessie Nell Lee, John Lockhart, John D. Long

Marie Murdock, Clarence Norwood, Margaret Parker,  
Marshall Pettit, Sara Phillips, Carol Pickens, Helen  
Polytinsky, Dwane Powell, Loretta Puckett, Sara Jo  
Putnam, Martha Ryan

Paul Sanders, Anna Mae Shaneyfelt, Kenneth Sharrott,  
Reuben Sims, Anderson Sparkman, Elizabeth Speakman,  
Rilla Speegle, Coy Stephenson, John Lee Stephenson  
Letane Turney, Jane Vest, Sarah Walters, Van Ward,  
Gene Weinman, Robert Earl Wiggins, Raymond Woodall,  
Junior Woodard, Geraldine Woods

J R. II C L A S S

CLASS OFFICERS: President, Vernon Key; Vice-President,  
Wilma Jean Tanner; Secretary-Treasurer, Elizabeth Groover;  
Sponsor, Mrs. Phil Wasson

CLASS ROLL: Myers H. Baker, Mary Elizabeth Ballew, Billy



Bennett, Horace Broom, Jerry Brown, John Edward Carnell,  
Herbert Chunn, Edward Eugene Cobb, Joe Cook, Louise  
Cooper, Jewel Curtis

Mary Lois Daniel, Mary Ellen Dean, Glenn Dobbs,  
Henry Edmondson, Dorsey Forrester, Herman Gordon,  
June Grisham, Elizabeth Groover, Lilly Mae Griffin,  
Johnnie Griffith

James Hanes, Beatrice Hancock, Edward Elvin Harris,  
Beauler Harvel, Ray Hill, James Holloway, William Robert  
Houston, Beth Howell

J.H. Johnson, J.W. Johnson, Adrain Jones, Eloise  
Jones, Vernon Key, Bluit Landers, Clara Boyce Larkins,  
Myrtle Ruth Lawrence, Leo Lipsey, Edward Livingston, John  
Lyle

Lera Mason, Barbara Anne Miller, Judson Miller,  
Travis Mitchell, John Montgomery, Edith Morris, Anne  
Mullins, Joan Nelson

Marie Patterson, Eugene Phillips, Bunyan Roan,  
J.H. Ryan, Theron Huie Ryan, Doris Sandlin, Nova Jo Scott,  
Barbara Lee Scott, John Dewey Sharp, Lewis Dewitt Sharp,  
Geraldine Shipp, Ralph Slate, Willi Ray Smith, Edna  
Speegle

Wilma Jean Tanner, Edward Davis Torry, Jonney Pruitt  
Ward, Louise Weaver, Edna Weinman, Kathryn Wilson, Oliver  
Woodard, Tolliver Woodard

#### J R. I C L A S S

CLASS OFFICERS: President, Tom Andy Bennett; Vice-Pres-  
ident, Joe Norwood; Secretary-Treasurer, Joyce Miller;  
Sponsor, Elizabeth Royer

CLASS ROLL: John Sloan Bean, Tom Andy Bennett, R.B. Black,  
Ethel Mae Bonds, Faye Brindley, Betty Jean Clarke, Edna  
Frances Clemmons, Edith Curtis

Jack Deal, Harold Driver, Ruth Eason, Gorman Gris-  
ham, Billy Groover, Edward Groover, Mildred Guyton,  
Malhon Hartselle, Margaret Howell, Mae Howell, Marie  
Holmes, Mary Elizabeth Holland

Helen Marie James, Carroll Mae Jarrett, Mary Cecil  
Johnson, Bessie Lou Kent, Gurney Lawrence, Dorothy Jean  
Massey, Kathryn McElroy, Joyce Miller, Aubrey Miller,  
Howard Montgomery, Billy Lee Moore, Hildred Moore,  
Opal Morgan

Joe Norwood, Sarah Nuby, Sue Nuby, Billy Payne,  
Joe C. Patterson, Melba Jean Praytor, Pauline Preston,  
Harry Puckett, Amando Lee Sharrott, Max Slate, Hal Peck  
Smith

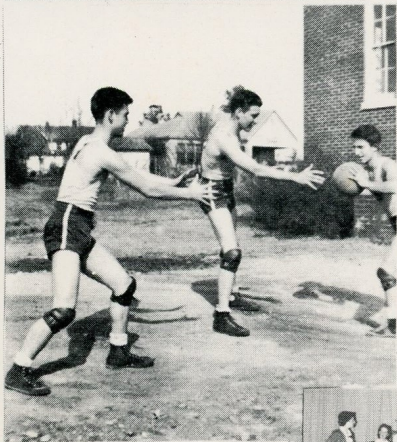
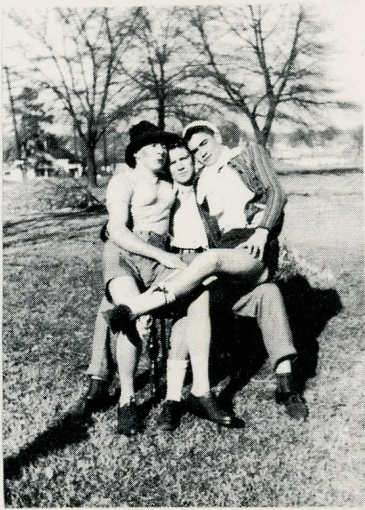
Arnold Travis, Ralph Tunstill, Elsie Tucker, Junior  
Waddell, Fay Weaver, Frances Wilson, Edna Wilborne, Ray  
Williams





# A ACTIVITIES







## STUDENT REPRESENTATIVE COUNCIL

OFFICERS: President, Dudley Puryear; Vice-President, Bevelye Barclift; Secretary-Treasurer, Jack Norwood; Sponsors, Jenny Lind Gatlin and Novel Miller

HOME ROOM REPRESENTATIVES: Sr. III, Mary Frances McCall; Sr. II, Margaret Sample; Sr. I, Edward Stephenson; Jr. III, Jack Hendrix; Jr. II, Beth Howell; Jr. I, Tom Andy Bennett

## BAND

CORONETS: Hugh Pattillo, Bobby Mixon, Bluit Landers Jr., Joe Hall, Edward Davis Terry

CLARINETS: Jessie Nell Lee, Jean Blair, Lois Grisham, Margaret Montgomery, Wilmath Groover, Jean Praytor

SAXAPHONES: Rachel Pattillo, Beth Howell

TENOR SAXAPHONE: Zelma Payne

TROMBONES: Harry Currier, Ralph Slate

BASS HORNS: Gregory Glasscock, John Lockhart

ALTO HORNS: Ray Slate

BARITONE: Charles Dorr

DRUMS: Roberta Clarke, John Montgomery

DIRECTOR: Pat Bria

## G L E E CLUB

OFFICERS: President, Martha Whitman; Secretary, Roberta Clarke; Reporter, Bevelye Barclift; Sponsor, Jenny Lind Gatlin

SOPRANOS: Bevelye Barclift, Jimmy Bennett, Frances Crowe, Harry Currier, Lavern Floyd, Willie Ruth Groover, Mimi Groover, Lois Grisham, Virginia Glasscock, June Grisham, Beth Howell, Charles Lackey, Bluit Landers, Clara Boyce Larkin, Jessie Nell Lee, Faye Mullins, Ann Mullins, Edward MaHaffey, Jack Norwood, Zelma Payne, Rachel Pattillo, Sarah Jo Putnam, John Paul Puckett, Sarah Phillips, Ruth Bradley Puckett, Buddy Smith, Betty Jo Stewart, Jimmy Wiggins, Martha Whitman, Matthew Wiggins

ALTOS: Virginia Claire Bailey, Frances Browne, Roberta Clarke, Rachel Praytor, Marie Patterson, Ann Speake, Wilma Jean Tanner

## NATIONAL HONOR SOCIETY

OFFICERS, FIRST SEMESTER: President, Zelma Payne; Vice President, Roger Hagans; Secretary, Anne Speake; Treasurer, Martha Whitman; Reporter, Frances Browne

OFFICERS, SECOND SEMESTER: President, Mary Frances Bean;



Vice President, Anne Speake; Secretary, Martha Whitman;  
Treasurer, Margaret Gordon; Reporter, Zelma Payne

MEMBERS: Virginia Claire Bailey, Bevelye Barclift,  
Mary Frances Bean, Hal Jean Blair, Frances Browne,  
Lloyd Burns, Mary Alvada Francis, Margaret Gordon,  
Roger Hagans, Oleta Hartselle, Zelma Payne, Hal Roberts,  
Margaret Sample, Helen Ruth Smith, Anne Speake, Russell  
Terry, Martha Whitman

#### F. H. A.

OFFICERS: President, Louise Wallace; Vice President,  
Jean Sample; Secretary, Mary Frances McCall; Treasurer,  
Evelyn Hammond; Reporter, Mildred Howell; Song Leader,  
Ruth Smith; Sponsor, Mrs. Leonard L. Gilchrist

MEMBERS: Mary Frances Bean, Jeffrie Brake, Johnnie  
Brake, Margaret Brindley, Lavel Childers, Jewel Cocke,  
Rebecca Collins, Elizabeth Evans, Emma Jean Evans, Laverne  
Floyd, Virginia Glascock, Louise Gordon, Larine Gordon,  
Mimi Groover, Willie Ruth Groover, Evelyn Hammond,  
Minnie Lee Hartselle, Mildred Howell, Kathleen Johnson,  
Sarah Johnson, Laverne Keel, Jessie Nell Lee, Roylean,  
Long, Mary Frances McCall, Ruth Mullins, Faye Mullins,  
Margaret Parker, Sarah Phillips, Carol Pickens, Helen  
Polytinsky, Rachel Praytor, Sarah Jo Putnam, Jean Sample,  
Elaine Slate, Ruth Smith, Helen Ruth Smith, Betty Jo  
Stewart, Mary Kate Reeves, Ruth Neal Britnell, Louise  
Wallace, Sarah Walters, Jean Weinman, Jane Vest

#### F. F. A.

OFFICERS: President, Lloyd Burns; Vice President  
Hubert Betterton; Secretary, Leo Templeton; Treasurer,  
Arthur Smith; Reporter, Harold Eason

MEMBERS: Lloyd Burns, Hubert Betterton, Arthur  
Bean, Harold Eason, James Hampton, Macon Hardwick, John  
Lockheart, Bernard McCutcheon, William McCutcheon, Hud-  
son M-Elroy, Talmadge Mann, Jack Norwood, Tasker Ryan,  
Ester Rogers, Clyde Reeves, Rubin Sims, A. O. Sharpe,  
Arthur Smith, Paul Weiman, Ramon Woodall,

#### DRAMATIC CLUB

OFFICERS: President, Anne Speake; Vice President,  
Gurney Gene Lackey; Secretary-Treasurer, Beth Howell;  
Reporter, Rachel Pattillo; Sponsor, Jenny Lind Gatlin.

MEMBERS: (Sr. III) Hal Jean Blair, Johnnie Brake,  
Frances Browne, Jo Groover, Zelma Payne, Anne Speake,  
Martha Whitman



(Sr. II) Virginia Claire Bailey, Bevelye Barclift, Margaret Lou Brindley, Frances Crowe, Roberta Clarke, Lois Grisham, Rodney Hagans, Gurney Lackey, Billy Murphoo.

(Sr. I) Kathleen Johnson, Gregory Glascock, Frances Kimbrough, Willie Ruth Groover, Margaret Montgomery, Rachel Praytor, Betty Jo Steward, Ruth Smith, Edward Stevenson, Bobby Nixon, Rachel Pattillo, Mary Kate Reeves

(Jr. III) Harry Currier, Jessie Nellie Lee, John Lockhart, Sarah So Putman

(Jr. II) Horace Broom, Louise Cooper, Mary Ballow, Beth Howell, Anne Mullins, Judson Miller, Joan Nelson, Marie Patterson, Ralph Slate, Dorothy Jean Owens

### THE SUNBONNET GIRL

Operetta presented by the Glee Club and directed by Miss Jenny Lind Gatlin May 2, 1941.

Time--Summer

Place--Garden of the Meadow's farm home

ACT I--Afternoon      ACT II--Evening of same day

CHARACTERS: Miranda Meadows--Bevelye Barclift

Mrs. Meadows--Zelma Payne      Louella Lumpkin--Betty Jo Stewart

Ezra McSpavin, the constable--Edward McHaffey

Mrs. Coleman, Pres. State Fed. Music Clubs--Roberta Clarke

Barbara Coleman, her daughter--Frances Browne

Bob Coleman, her son--Roger Hagan

Jerry Jackson, Bob's chum--John Paul Puckett

Abijah Scruggs, Sue's guardian--Jimmie Wiggins

Susan Clifton, the Sunbonnet Girl--Martha Whitman

Mrs. Scruggs--Margaret Gordon

Sadie Simpkins--Clara Boyce Larkin

#### Chorus

Beth Howell      Rachel Praytor      Willie Ruth Groover

Ann Mullins      Virginia Glascock      Sarah Jo Putman

Jean Tanner      June Grisham      Virginia Claire Bailey

Loyd Burns      Harry Currier      Hubert Betterton

Fay Mullins      Bobby Nixon      Winnie Lee Hartselle

Lois Grisham      Mini Groover      Margaret Montgomery

Sarah Phillipps      Jack Norwood      Frances Kimbrough

Frances Crowe      Carole Pickens      Ruth B. Puckett

Charles Lackey      Bluit Landers

Fay Mullins

Rachel Pattille-Pianist



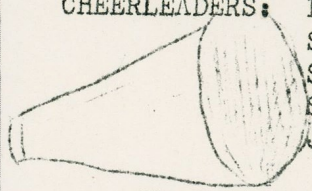


**A**THLETICS



CHEERLEADERS AND ASSISTANTS

FIGHT  
FIGHT  
TEAM!



CHEERLEADERS: Head Cheerleader--Anne Speake  
Sr. III--Byrd Dean  
Sr. II---Billy Murphree  
Sr. I----Frances Kimbrough  
Jr. III--John Lee Stephenson

There are three people from Jr. III, Sr. I, Sr. II, and Sr. III that are elected by the class to go with the cheerleaders when the games are out of town. They are: Sr. III's Martha Whitman, Evelyn Hammond, and Mary F. Bean; Sr. II's Virginia Claire Bailey, Bevelye Barclift and Frances Crowe; Sr. I's Rachel Praytor, Kathleen Johnson, and Martha Ellen Wiggins; Jr. III's Margaret Parker, Coy Stephenson and Jewel Cox

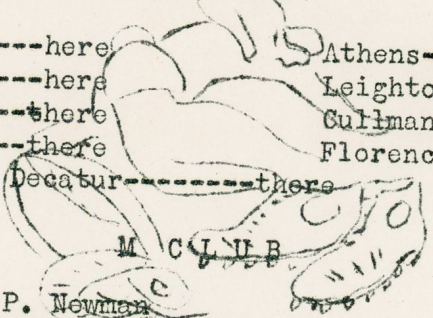


FOOTBALL SQUAD OF '40

HALFBACKS: W.P. Newman, Macon Hardwick, Jack Norwood, Paul Smith, Russell Terry  
QUARTERBACKS: Gurney Lackey, John Paul Puckett, Robert Earl Wiggins  
FULLBACKS: Matthew Wiggins and Truman Hill  
ENDS: Roger Hagans, Jessie Ray Halbrooks, Hubert Betterton, Jimmie Wiggins, Ferrell Shipp, Clarence Norwood  
TACKLES: Leonard Hagans, James Baker, Tommie Kimbrough, Tasker Ryan, Truman Praytor  
GUARDS: Rodney Hagans, Pete Lawrence, Charles Lackey, Edwin Higdon, Jimmie Bennett  
CENTERS: Dudley Puryear, Leo Templeton, Gregory Glasscock  
CAPTAIN: Dudley Puryear COACH: Grady Long  
ALTERNATE CAPTAIN; Pete Lawrence

SCHEDULE OF GAMES

Town Creek-----here Athens-----here  
Moulton-----here Leighton-----here  
Sheffield-----there Gullman-----there  
Huntsville-----there Florence-----here  
Decatur-----there



President--W. P. Newman  
Vice President--Matthew Wiggins  
Sec.-Treasurer--Macon Hardwick

MEMBERS: James Baker, Byrd Dean, Roger, Leonard, and Rodney Hagans, Edwin Higdon, Truman Hill, Tommy Kimbrough,



Gurney Lackey, Pete Lawrence, Jack Norwood, John Paul Puckett, Dudley Puryear, Baul Smith, Doug Summers, Newton Thrasher, and Jimmie Wiggins

## B A S K E T B A L L

### SENIOR TEAM

Jimmie Wiggins  
Hubert Betterton (Sub.)

Matthew Wiggins  
John P. Puckett  
Arvil Sanders (Sub.)  
Van Ward (Sub.)  
Gurney Lackey (Sub.)

W. P. Newman  
Truman Hill  
Jack Norwood (Sub.)  
Gregory Glasscock (Sub.)  
Tasker Ryan (Sub.)

Coach Thomas Gregory  
Manager Newton Thrasher

### JUNIOR TEAM

#### Center

Warren Brinley

#### Guard

Rubin Sins  
John Lockhart  
Vernon Key  
Chester Collins  
Herman Gordon  
Harry Puckett

#### Forward

Truman Eubanks  
R. E. Wiggins  
Dorsey Forrester  
Charles Lackey  
George Hammond

## S C H E D U L E

Cotaco	West Point
Pricoville	Oak Ridge
Danville	Falkville
Ryans Cross Roads	Riverton
Flint	

### Alma Mater

On the City's southern boarder, reared against the sky;  
Proudly stands our Alma Mater as the years roll by;  
Forward, ever, be our watch word, conquer, and prevail;  
Hail to thee our Alma Mater  
Morgan High, All Hail!

Years may dim our recollection; time its change may bring;  
Still thy name in fond affection ever more we'll sing;  
Alma Mater, Alma Mater,  
Tender, fair, and true;  
Grateful hearts with love unfailing all our vows renew.





**A** DVERTISING



# SENIORS of 1941

## Do You Know

that you can purchase a very appropriate gift for your school—a gift that will perpetuate the memory of the class of '41 for as little as \$3.60?

## Our "School Gift Service"

catalog contains pictures and full descriptions with prices on more than 300 items which have been selected for their suitability as class gifts and which you can purchase at a saving at prices ranging from \$1.50 up.

## Write for Free Catalog Today

You will be pleased with the up-to-date suggestions offered thru this service.

---

### I. C. P. SCHOOL GIFT SERVICE

615 Wyandotte Street  
Kansas City, Missouri



# SENIORS of 1941

## Do You Know

that you can purchase a very appropriate gift for your school—a gift that will perpetuate the memory of the class of '41 for as little as \$3.60?

## Our "School Gift Service"

catalog contains pictures and full descriptions with prices on more than 300 items which have been selected for their suitability as class gifts and which you can purchase at a saving at prices ranging from \$1.50 up.

## Write for Free Catalog Today

You will be pleased with the up-to-date suggestions offered thru this service.

---

### I. C. P. SCHOOL GIFT SERVICE

615 Wyandotte Street  
Kansas City, Missouri



