



Harborfields Central School District

MISSION STATEMENT

The mission of the Harborfields Central School District is to provide an innovative and collaborative learning environment where all students are empowered to realize their unique potential while striving for academic excellence. We aim to prepare students for their future and to equip each child with the essential tools needed to become respectful, responsible, resilient, empathetic, self-assured adults. Harborfields is committed to developing life-long learners with the intellectual, social and emotional skills necessary to achieve success as active citizens within their local community and in an ever-changing diverse global society.

Each Child. Each Day. One Harborfields Family.



Harborfields Central School District

Building Conditions Survey

Facilities Update

April 19, 2023



Harborfields Central School District

VISION:
Each Child. Each Day.
One Harborfields Family.

Each Child. Each Day. One Harborfields Family.



Background Information

What is a Building Condition Survey (BCS)?

- The BCS is a comprehensive report on the condition of school facilities that is required by law to be submitted to the New York State Education Department (NYSED) on a schedule prescribed by the State.

Each Child. Each Day. One Harborfields Family.



Background Information

When was the last BCS performed at HF?

- Prior to the BCS just completed this winter, the last BCS was completed in 2017.



Each Child. Each Day. One Harborfields Family.



Background Information

What is the purpose of a BCS report?

- A BCS is a detailed inspection of a building in order to establish its maintenance and repair condition at that time. It is done at a level that assesses program spaces as well as major building systems and their components, describing them and providing detail as to their current state.



Background Information

How does a school district utilize a BCS report?

- The BCS report provides the opportunity for districts to develop short and long term plans to maintain and improve district facilities.
- The BCS does not provide recommendations for enhancements to existing spaces.



How is the BCS Developed?

- An evaluation of the prior BCS (2017) is conducted.
- Site visits are performed by architects, facilities personnel, and district/building administrators.
- A draft BCS report is developed and reviewed with staff, administrators, and the Board of Education.
- A final BCS report is submitted to NYSED.



What is Included in the HF BCS?

- All identified repairs (current and projected) are included.
- In total, the BCS includes an estimated \$71.6 million in projected costs. These costs are “fully loaded” to include architect and engineering fees and escalation.
- It is not expected that all items in the BCS are addressed in a 5-year period.



How Does the District Prioritize Items Included in the BCS?

- Health and Safety are always a priority.
- Code compliance, major system repairs, energy performance, general maintenance and alterations follow.
- A financial plan is developed where items are categorized as those that can be included in the annual budget and those that may require funding outside of the general budget.



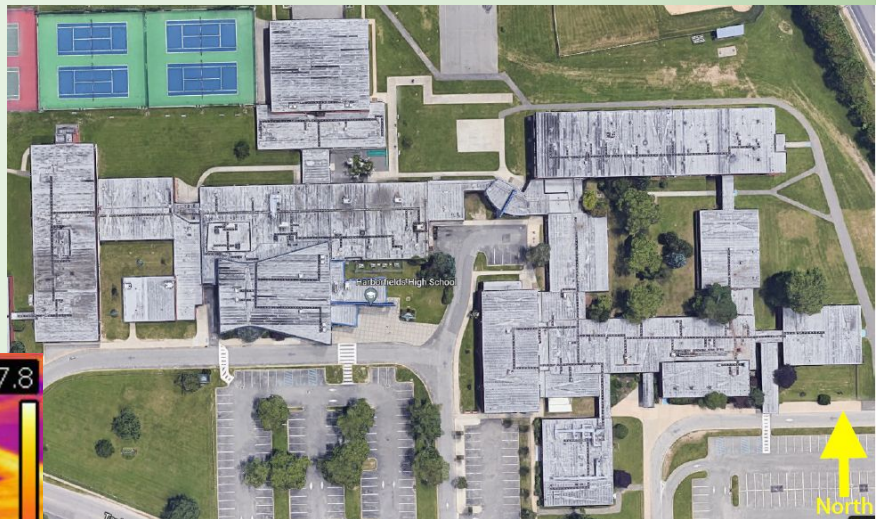
Harborfields Central School District

Significant Items Included in the BCS Report



Harborfields High School

Roofing: 151,400sf of flat roofing





Harborfields High School

Partial Replacement of Existing Asphalt & Concrete

Resurfacing of the Running Track





Harborfields High School

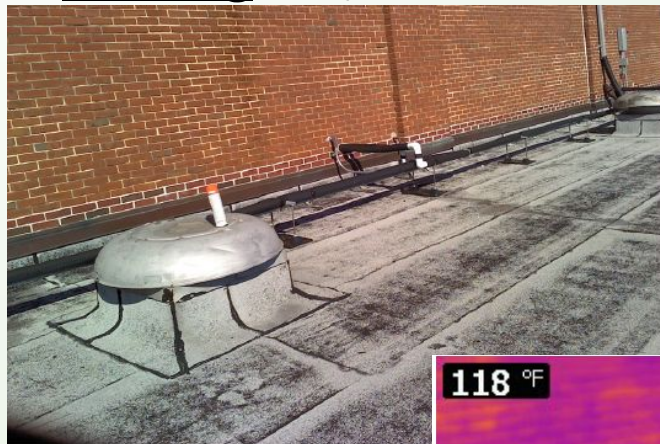
Replace 2 Tennis Courts & Repair Cracks on Other Courts





Oldfield Middle School

Roofing: 59,000sf of flat roof & 24,000sf of pitched shingle roofing





Oldfield Middle School

Partial Repair of Parking Lot Asphalt

Partial Replacement of Existing Concrete

Repair Major Cracks on Tennis Courts





Oldfield Middle School

Partial Masonry Repointing

Partial Replacement of Windows and Lintels

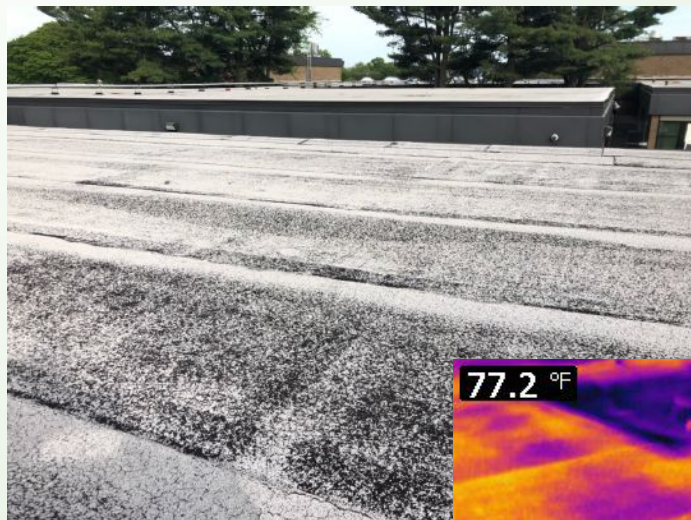
Replace Running Track





Thomas J. Lahey Elementary

Roofing: 101,640sf of flat roofing





Thomas J. Lahey Elementary

Partial Repair of Parking Lot Asphalt

Partial Replacement of Existing Concrete





Thomas J. Lahey Elementary

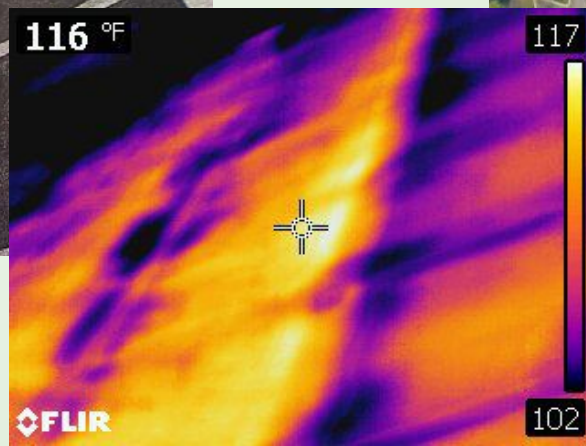
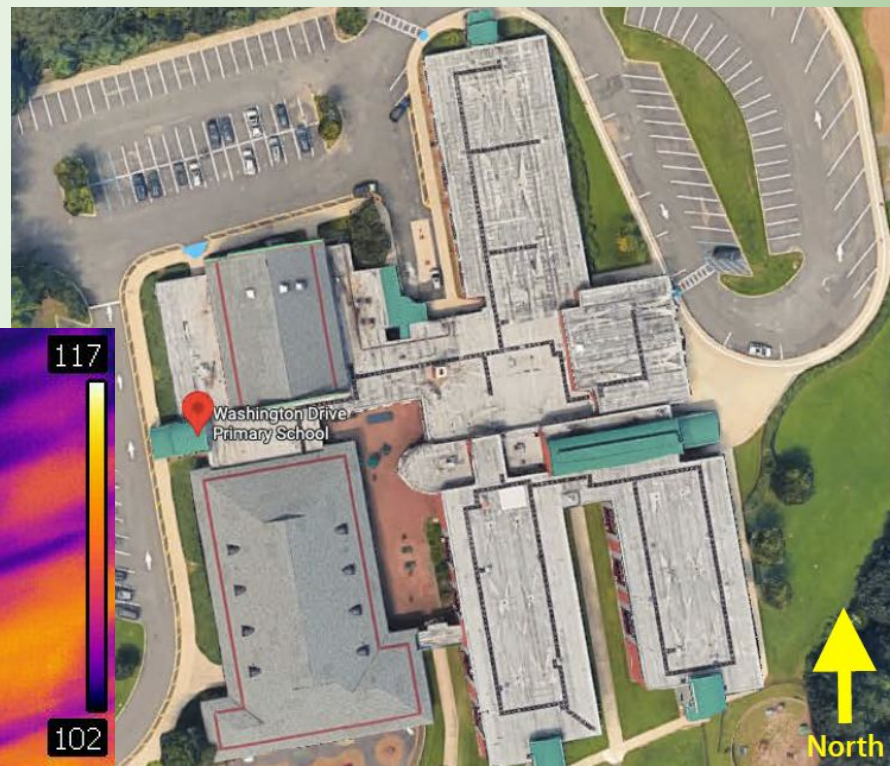
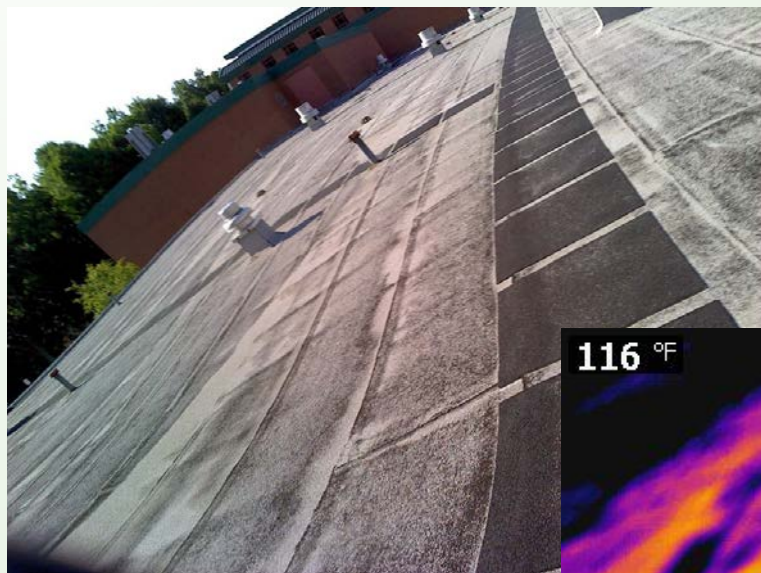
Partial Replacement of Playground Equipment





Washington Drive Primary

Roofing: 60,800sf of flat roof & 44,100sf of pitched shingle roof





Washington Drive Primary

Partial Repair of Parking Lot Asphalt

Partial Replacement of Existing Concrete





Washington Drive Primary

Replace Playground Equipment

Install Safety Surfacing at Playgrounds





Next Steps

- Continue to work with architects, administrators, and facilities personnel to assess priorities.
- Develop and communicate a financial plan to address the needs identified in the BCS report.
- Gather feedback and revise our plan on an ongoing basis.



Harborfields Central School District

Questions and Comments are Welcome.

THANK YOU!

Each Child. Each Day. One Harborfields Family.