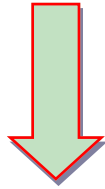
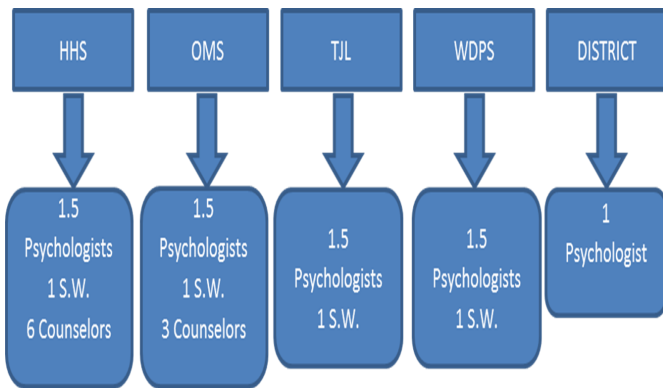


Harborfields Central School District

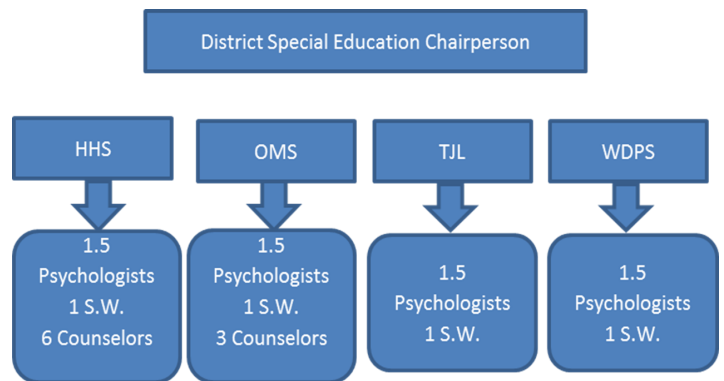
Enhancement of Support Services

Current Structure



- **Psychologists are responsible for:**
 - ✓ Creating meeting packets
 - ✓ Chairing subcommittee meetings (SCSE)
 - ✓ Meeting with students
 - ✓ Participating in building-level activities

Proposed Structure



- **Psychologists' responsibilities with proposed structure:**
 - ✓ Not creating meeting packets
 - ✓ Chairing half of the subcommittee meetings (SCSE)
 - ✓ More contact time with students
 - ✓ Increased focus on building-level activities



Success for our HF Family
GIVING OUR STUDENTS A WORLD-CLASS EDUCATION ONE CHILD AT A TIME