

# Jeopardy

Science	chemistry	Atomic Structure	Chemicals	Forces
<u>\$100</u>	<u>\$100</u>	<u>\$100</u>	<u>\$100</u>	<u>\$100</u>
<u>\$200</u>	<u>\$200</u>	<u>\$200</u>	<u>\$200</u>	<u>\$200</u>
<u>\$300</u>	<u>\$300</u>	<u>\$300</u>	<u>\$300</u>	<u>\$300</u>
<u>\$400</u>	<u>\$400</u>	<u>\$400</u>	<u>\$400</u>	<u>\$400</u>
<u>\$500</u>	<u>\$500</u>	<u>\$500</u>	<u>\$500</u>	<u>\$500</u>

Final Jeopardy

# 1 - \$100

- A system of knowledge and the methods used to find that knowledge.
  
- What is science.



# 1 - \$200

- Using knowledge to solve practical problems.
- What is science?



# 1 - \$300

- Social science and naturel science.
- What is included in the study of science?



# 1 - \$400

- Chemistry and physics.
- What is the two main areas of physical science?



# 1 - \$500

- Built upon Seven metric units.
- What is known as international system of Units?



2 - \$100

- Paraffin.

- What a candle burns?



# 2 - \$200

- The production of a gas.
- What is evidence of a chemical change?





# 2 - \$300

- Volume of gas is directly proportional to its temperature.
- What is Charles's Law?



# 2 - \$400

Phase change in which a substance changes from a gas to a solid.

- What is deposition?



# 2 - \$500

- Phase change in which a substance changes from a solid into a gas.
  
- What is sublimation?



3 - \$100

- Dense positively charged mass in the center of an atom.
- What is a nucleus?



# 3 - \$200

- Possible energies that electrons in an atom can have.
- What is energy levels?



3 - \$300

- A type of bond that holds cations and anions together.
- What is ionic?



3 - \$400

- The force that holds atoms or ions together.
- What is a bond?



3 - \$500

- An ion with a positive charge

- What is a cation?





# 4 - \$100

- In a chemical reaction the substances that undergo change.
  
- What are reactants?



4 - \$200

- Synthesis reaction.

- What is a type of chemical reaction?



# 4 - \$300

- Two or more substances react to form a single substance.
- What is a synthesis reaction?



# 4 - \$400

- The maximum amount of solute that normally dissolves in a given amount of solvent at a certain temperature.
  
- What is solubility?



# 4 - \$500

- Unstable atomic nucleus emits charged particles and energy.
- What is radioactivity?



# 5 - \$100

- A frame of reference.
- What is needed to describe motion accurately and completely?



5 - \$200

- Meters per second ( m/s )
- What is the SI unit of speed?



# 5 - \$300

- A push or a pull on an object.

- What is force?





# 5 - \$400

- Friction force that works on rolling objects.
- What is rolling friction?

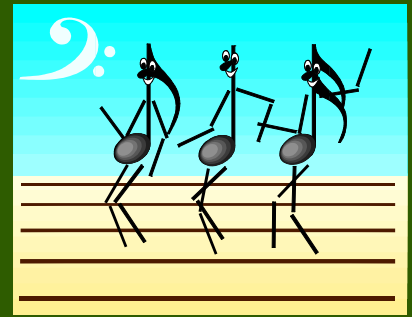


# 5 - \$500

- As the speed of a fluid increases the pressure within the fluid decreases.
  
- What is Bernoulli's principle?



# Final Jeopardy



- The ability of fluid to exert an upward force on an object placed in it.
  
  
  
  
  
  
  
  
  
  
- What is Buoyancy?

