

# Superintendent's Update

## Health and Safety Update

Board of Education Meeting

January 18, 2022

Meeting No. 13



*Excelling Together with Endless Pathways for Success!*

# College, Career, Life Ready Graduates

## Academic Rigor

- High Expectations
- Pathways, Choices & Personalization
- Cultural Competence



## Safe Learning Environment

- Inclusion
- Mental & Physical Wellness
- Sense of Belonging

Board of Education Priorities



# Board of Education Priorities



## Maximize Student Achievement

- Close the digital and equity gap.
- Offer robust in-person and independent study learning programs.
- Accelerate learning and improve attendance and engagement.

## Foster a Positive Culture of Learning

- Ensure equitable teaching and learning opportunities led by excellence.
- Support culturally relevant curriculum that emphasizes inclusion.
- Increase school connectedness for students, parents, and families.

## Ensure the Health and Safety of Students and Employees

- Strengthen mental health support and programs.
- Ensure best practices for safe and healthy learning environments.
- Support physical, social, and emotional wellbeing.

## Maintain District Financial Responsibility

- Ensure the fiscal health of the District.
- Implement a fiscal plan to preserve the District resources.
- Plan for the District's future educational and facility needs.

## Ensure the Health and Safety of Students and Employees

- Strengthen mental health support and programs.
- Ensure best practices for safe and healthy learning environments.
- Support physical, social, and emotional wellbeing.



# Timeline – Return from Winter Break

## December

Last school day before winter break.

## December 22

Governor Newsom announces CDPH will provide at-home test kits for all K-12 students as they return from winter break. GUSD expands winter break testing, sends message to families with details.

## January 3

Glendale Unified district office staff returned to work. LA County Department of Public Health COVID-19 safety update.

## January 4

Glendale Unified Board of Education holds special Board meeting; provides direction for updated health and safety measures as students return from winter break.

- Required masking indoors and outdoors unless actively eating or drinking.
- Requirement to show a negative COVID-19 test upon return from break.

LA County Department of Public Health COVID-19 safety update.

**Glendale Unified conducted more than 15,000 COVID-19 tests at district testing clinics from January 3-9.**



# Timeline – Return from Winter Break

## January 10

Glendale Unified students, teachers, and staff returned to school sites (85% student attendance rate).

LA County Department of Public Health COVID-19 safety update (youth sports).

## January 11

At-home test kits from CDPH arrived in Glendale Unified warehouse at 9:00 p.m.

## January 12

Glendale Unified facilities staff deliver at-home test kits to school sites.

## January 13-14

At home test kits distributed to every GUSD student (provided by CDPH) and every GUSD employee (provided by District with COVID-19 funds) in advance of the long weekend.

LA County Department of Public Health COVID-19 safety update January 14.

**Glendale Unified conducted an additional 12,000 COVID-19 tests at district testing clinics from January 10-14.**



# Isolation for Positive Cases

- Duration for individuals with symptoms:
  - At least five days have passed since symptoms first appeared, **AND**
  - Symptoms have improved and individual is fever-free without fever-reducing medication, **AND**
  - A negative COVID-19 Rapid test collected on Day 5 or later.
- Duration for individuals with no symptoms:
  - At least five days have passed since the positive COVID-19 test, **AND**
  - Individual remains free of symptoms, **AND**
  - A negative COVID-19 Rapid test collected on Day 5 or later.
- If individual is unable to test or chooses not to test, and symptoms are not present or resolving, isolation can end after Day 10.





# Quarantine for Close Contacts

- Close contacts who are unvaccinated must self-quarantine for 10 full days after their last known contact with the positive case.
- Unvaccinated close contacts who have had a positive COVID-19 test within the past 90 days and are not experiencing symptoms are exempt from quarantine.
- Activities may resume starting on Day 6 if:
  - 5 full days have passed from their last known contact.
  - if they have a negative test result collected on Day 5.



# Testing Requirements

- After exposure to a positive case - testing is now required for all staff and students who are close contacts and who remain in school because they are fully vaccinated
- Testing two times is strongly recommended:
  - Immediately upon being notified of the exposure and
  - Day 5 from the date of last exposure
- Testing for indoor instrumental music, indoor athletic sport teams and outdoor teams with moderate contact is required.



# Temporary Changes to Mask Guidance

Universal masking is currently required both indoors and outdoors except when actively eating or drinking.

**ALL IN**  
SCHOOLS L.A. COUNTY CAN COUNT ON

**IT IS TIME TO UPGRADE  
TO A **MEDICAL GRADE MASK****

Los Angeles County  
Office of Education

(DISPOSABLE)  
**BLUE SURGICAL MASK**

**KN95**

**N95**

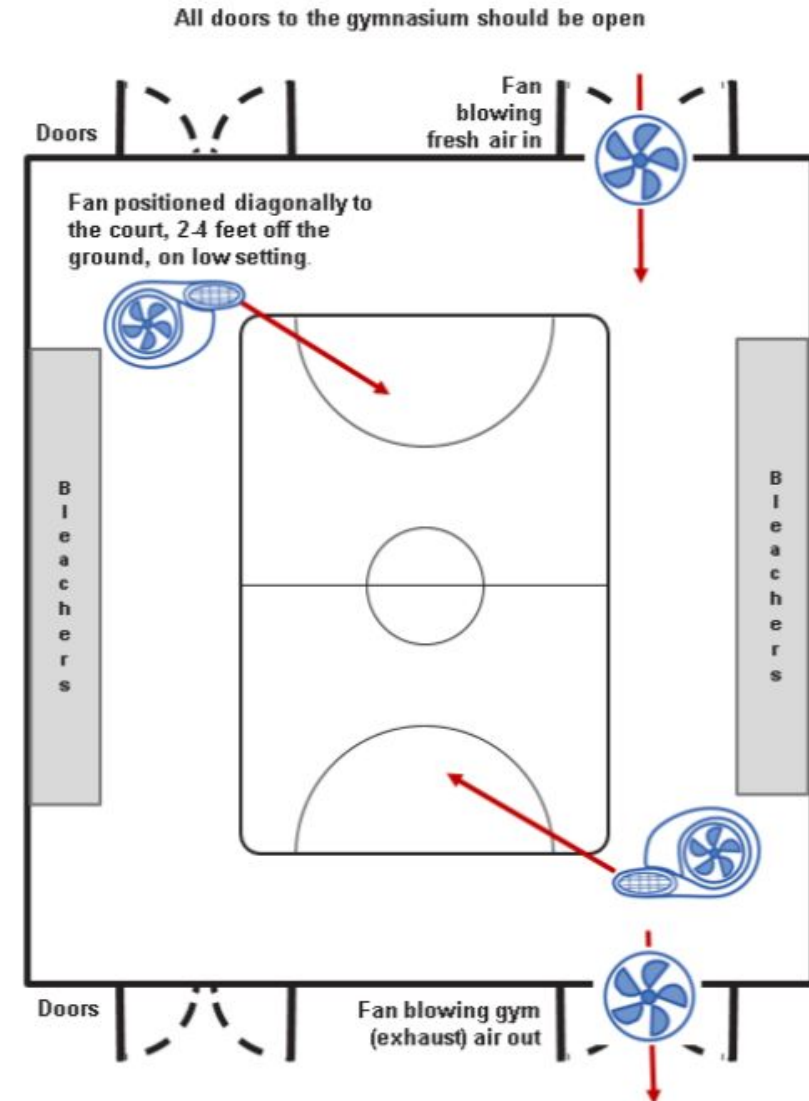
**ALL MASK SHOULD:**

- HAVE NOSE WIRE
- BE WELL-FITTED

	(DISPOSABLE) BLUE SURGICAL MASK	KN95	N95
<b>STUDENTS</b>	RECOMMENDED	X	X
<b>SCHOOL STAFF</b>	REQUIRED	RECOMMENDED	RECOMMENDED
<b>DOUBLE MASK?</b>	YES	NO	NO

# Gymnasium Ventilation

- Improved ventilation in gymnasiums is a critical strategy to lower risk of viral transmission and outbreaks occurring as a result of high risk competitive play.
- Strategic use of fans to improve air exchange at floor level may have significant impact at mitigating this risk.
- Glendale Unified has added “push and pull” fans to every gymnasium in accordance with LACDPH guidelines.





# Temporary Changes to Youth Sports

- A minimum 7-day suspension of all team activities for any youth sports team in which there has been an outbreak of four or more epidemiologically linked cases over a 14-day period.
- In addition to masking required for all indoor sports when practicable, masking is now also required for moderate and high-risk outdoor sports, when practicable for students, coaches, and referees/game officials.
- All school districts in the Pacific League are limiting access to indoor facilities to teams and coaching and supervision staff only.



# Glendale Unified COVID-19 Testing

	<b>Vital Nurse Services</b>	<b>Primex Lab Athletic Testing</b>	<b>Total</b>
Week of January 3-9	14,783	424	15,207
January 10	2,798	337	3,135
January 11	1,909	194	2,103
January 12	2,129	262	2,391
January 13	2,021	0	2,021
January 14	2,489	0	2,489
Totals	26,129	1,217	27,346

- Average positivity rate for the week of January 10-14: 9.7%
- Does not include at-home tests or tests taken at off-site locations.



# Attendance

- Attendance rate for week of January 10-14: **84.5%**
- Attendance rate on Tuesday, January 18: **88.4%**
- Additional 4.3% of students enrolled in independent study.



# Layers of Protection

- COVID-19 testing every school day, every school site
- 37 vaccination clinics
- Public COVID-19 dashboard
- Daily health checks
- Masks (upgraded based on LACDPH guidelines)
- Upgraded ventilation and air filtration (including gymnasium fans)
- Outdoor learning spaces
- PPE and cleaning supplies (including upgraded masks)
- Limited visitors





---

*"Everybody can be great  
because everybody can  
serve."*

- Dr. Martin Luther King, Jr.

---



# THANK YOU!

Thank you to our amazing administrators, teachers, staff, families, and community partners for your resilience and support in ensuring our schools are safe spaces for students to learn.