

Superintendent's Update

Board of Education Meeting

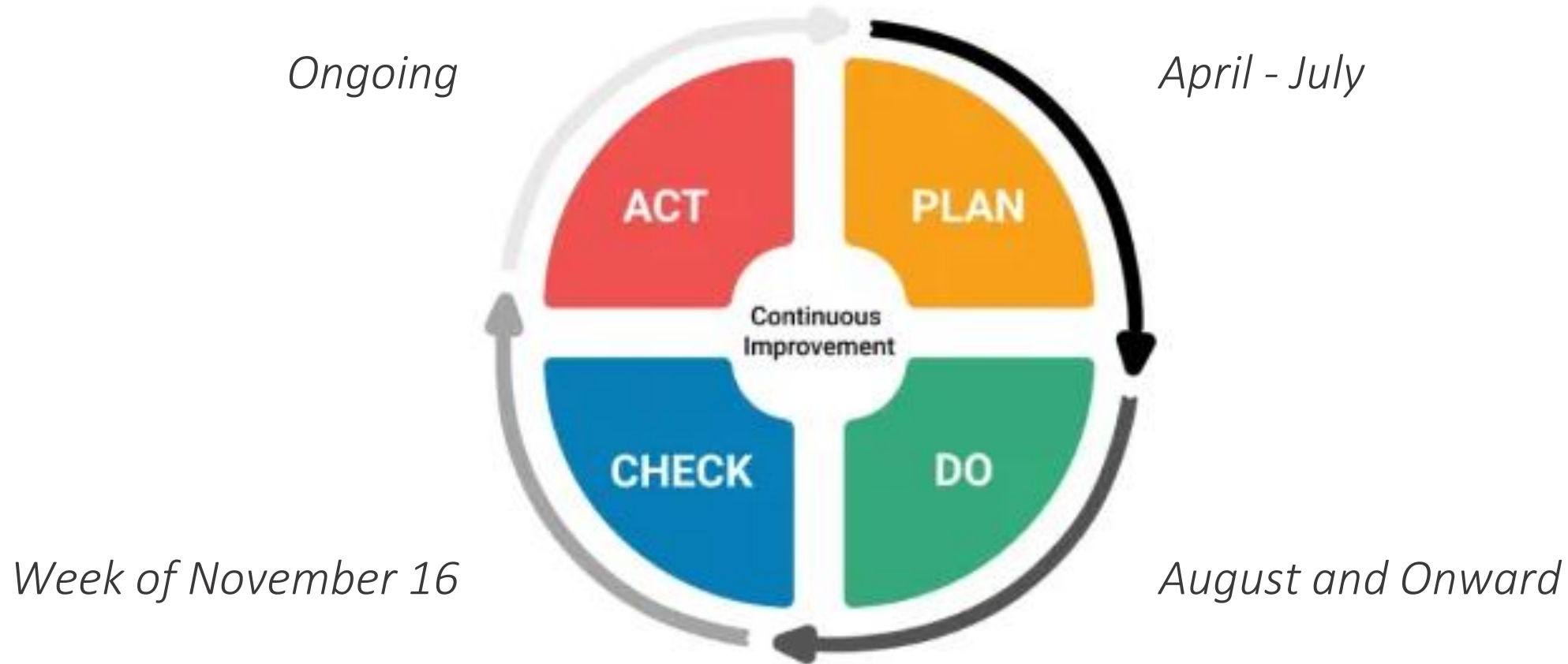
November 17, 2020

Meeting No. 11



Excelling Together with Endless Pathways for Success!

Organizing for Success for the 2020-21 Academic Year: Continuous Improvement Phase





School Year Update

- GUSD Healthcare Partners Advisory
- Partnering with LA County Public Health
- TK-2 Reopening Waivers
- Facilitated Learning Centers – English Learners
- Specialized Services for Students with Special Needs – Transportation
- Athletic Conditioning Update – Temporary Outdoor Lighting
- Outdoor Teaching Stations
- County Best Practices
- Parent/Guardian Return to School Survey and Notification
- Thanksgiving: Virtual Wellness Room, Meal Kit Distribution, Safety Tips

GUSD Healthcare Partners Advisory



Health Services
LOS ANGELES COUNTY



Dignity Health™
Glendale Memorial Hospital
and Health Center

USC Verdugo
Hills Hospital

Keck Medicine of USC



Comprehensive
Community
Health Centers
Your Health, Our Mission.

Adventist Health
Glendale



KAISER
PERMANENTE®



Partnering with Public Health

- Glendale Unified requested visits
- Visits are being scheduled for all middle and high schools, College View, Pacific Avenue, and elementary schools with special education clusters
- Los Angeles County Parent Town Hall Event
 - LA County Director of Public Health Monday, November 9
 - LA County Superintendent of Schools
 - [Link to Recorded Event](#)

TK-2 Reopening Waivers

- Submitted waiver for Mann Elementary
- Waiting for Public Health feedback
- Additional waiver applications will be submitted after all details for Mann Elementary are finalized





Facilitated Learning Centers – English Learners

Facilitated Learning Centers (FLC) started November 16

School	FLC #1	FLC #2	Total # of Students	Total # of Staff
Roosevelt Middle School	10	9	19	4
Rosemont Middle School	11		11	2
Toll Middle School	4		4	2
Wilson Middle School	7		7	2
Crescenta Valley High School	8		8	2
Glendale High School	10	9	19	4
Hoover High School	2		2	2
TOTALS			70	18



Specialized Services – Students with Special Needs

Transportation Plan

- Transportation is provided for:
 - students who do not attend their home school or
 - students who are in self-contained classes
- 155 students assigned to self-contained classes expressed interest in returning to school and are eligible for transportation
- Parents would be asked to transport their student if possible (safest and quickest). If not, students would be offered transportation:
 - First Student Bus Company, ALC, Carevan

Specialized Services – Students with Special Needs *Transportation Plan*



- All students must:
- ✓ Wear a mask
 - ✓ Sit every other seat
 - ✓ Crack windows
 - ✓ Be transported as a cohort

Athletic Conditioning Update

- CIF competitions are not allowed until State issues new guidance, which has been postponed
- All athletic conditioning is held outdoors



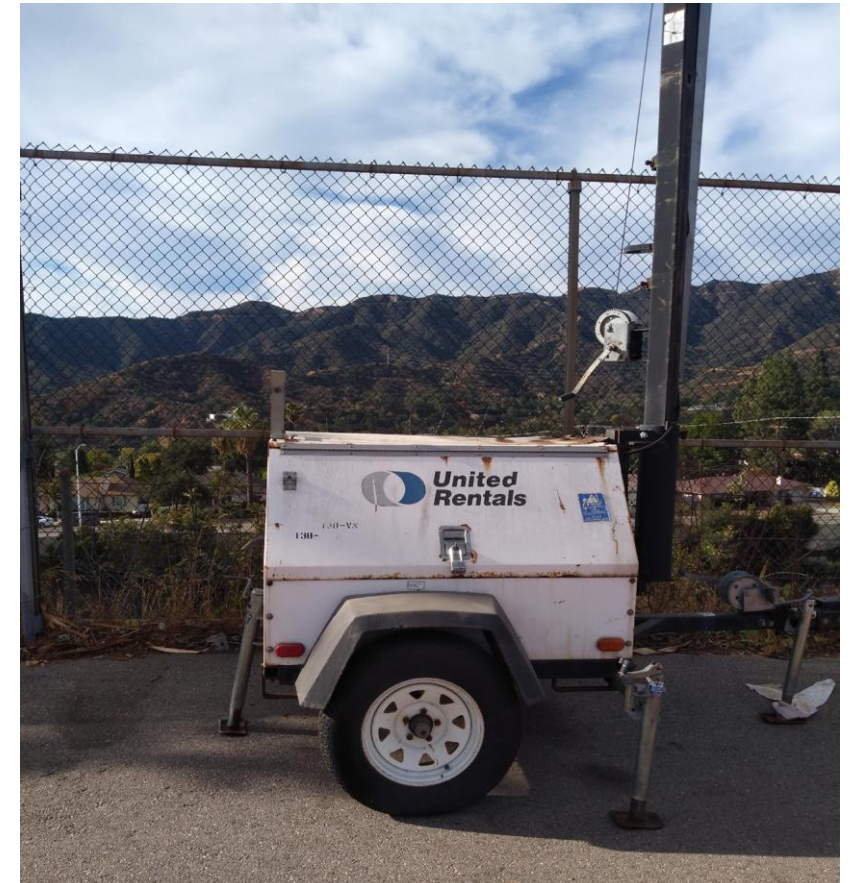
Temporary Outdoor Lighting

Crescenta Valley HS

- In the past, a facility use permittee has used temporary tower lighting for their program in the stadium
- The temporary lighting units are still located in the stadium
- School administration is reaching out to see if there are options for the school to borrow the temporary lighting units
- Basketball and tennis courts are already illuminated at CVHS
- Mounting and available power do not exist at CVHS

Cost to rent units (ea.) from a rental yard:

Day.....\$145
Week\$320
Month\$696
Insurance\$35 per day

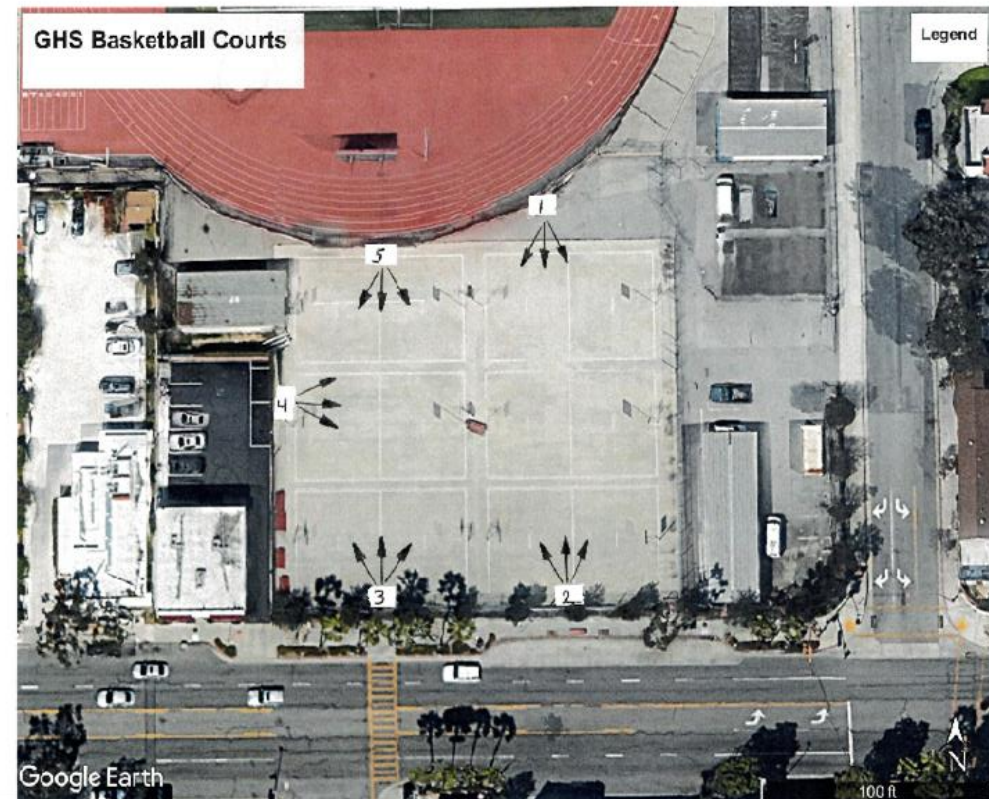


Temporary Outdoor Lighting

Glendale HS Basketball Courts

- 5 locations identified
- Lights can be orientated downward to avoid neighbor complaints
- Lights will be controlled by a timer

Estimated cost: \$7,000 using contracted services



Exploring Outdoor Classroom Spaces



Exploring Outdoor Classroom Spaces

Solar Panels



Exploring Outdoor Classroom Spaces

Lunch Shelters



Exploring Outdoor Classroom Spaces

Garden Space



Exploring Outdoor Classroom Spaces *Between/Adjacent to Buildings*





LACOE Lessons from the Field – Elementary

- **Vista Unified School District – San Diego County**
 - 50% on campus, 50% distance learning
 - Full day schedule on campus

- **Tustin Unified School District – Orange County**
 - 51% on campus, 49% distance learning
 - AM/PM model; 2 ½ hours of instruction per day
 - All distance learning on Wednesdays for deep cleaning
 - Teachers livestream to students who are at home

- **Rocklin Elementary – Placer County**
 - 86% on campus, 14% distance learning
 - Grades TK-1 AM/PM; Extended lunch period for sanitizing between groups
 - Grades 2-5 T/TH and W/F hybrid learning; Alternate Mondays for Group A/B



LACOE Lessons from the Field – Secondary

- **Rancho Buena Vista HS – Vista Unified – San Diego County**
 - 50% on campus, 50% distance learning
 - Full Day Schedule (6 periods per day) on campus
- **Foothill High School – Tustin Unified School District – Orange County**
 - 75% hybrid, 25% distance learning
 - Attend alternating days and live stream from home when not on campus
 - Teachers also livestream to students who are only doing distance learning
- **Rocklin High School – Placer County**
 - 90% hybrid, 10% distance learning
 - Students are in A/B groups, attend every other day with alternating Mondays
 - All schools within the district follow the same model



GUSD Return to School Survey

- Will be sent to parents/guardians week of November 30
- Question:

When state and county health guidelines permit schools to reopen for part-time or full-time on-campus instruction, what would be your plan for your student?

Note: students attending school on campus must adhere to all safety protocols, including wearing a facemask and maintaining six feet of physical distance.

- I would send my student to school for on-campus instruction
- I would prefer my student continue 100% distance learning, similar to the fall semester



Glendale Unified Student Wellness Services Virtual Wellness Room

YOGA EXERCISES



Yoga for Stress Relief – 20-Minute Teen Yoga Class



Sunrise Yoga – 15 minute – Morning



Yoga for Neck, Shoulders, Upper Back



- Yoga Exercises
- General Exercises
- Visual Relaxation
- Guided Meditation
- Sounds & Music
- Mindfulness Exercises
- Puzzles & Games
- Animal Cameras

**HAPPY
THANKSGIVING!**

THANKSGIVING MEAL KIT

FRIDAY, NOVEMBER 20, 2020

FOR ALL CHILDREN 18 YEARS AND UNDER



TURKEY WITH GRAVY



STUFFING



POTATOES



MIXED VEGETABLES



PUMPKIN BREAD



AND MORE!

**AVAILABLE AT GRAB & GO
SITES LISTED BELOW**

Pick Up Time

7:00 A.M. - 8:00 A.M.

12:00 P.M. - 1:00 P.M.

**ROOSEVELT MIDDLE SCHOOL
ROSEMONT MIDDLE SCHOOL
WILSON MIDDLE SCHOOL
CLARK MAGNET HIGH SCHOOL
CRESCENTA VALLEY HIGH SCHOOL
GLENDALE HIGH SCHOOL
HOOVER HIGH SCHOOL**

**CERRITOS ELEMENTARY SCHOOL
COLUMBUS ELEMENTARY SCHOOL
JEFFERSON ELEMENTARY SCHOOL**



Thanksgiving Meal
Kit Distribution
November 20

Safety During Thanksgiving Break

- Find latest information and helpful tips at gusd.net/HealthyHoliday
- [Statewide Holiday Travel Advisory](#)
 - Californians should avoid non-essential travel
 - Anyone arriving or returning to California should voluntarily self-quarantine for 14 days
- [CDC Holiday Travel Guidelines](#)
- [LA County Public Health Guidance for Holiday Celebrations](#)





Questions?