

Post-Census Redistricting - 2020



David A. Soldani, Partner
Atkinson, Andelson, Loya, Ruud and Romo

Glendale Unified School District

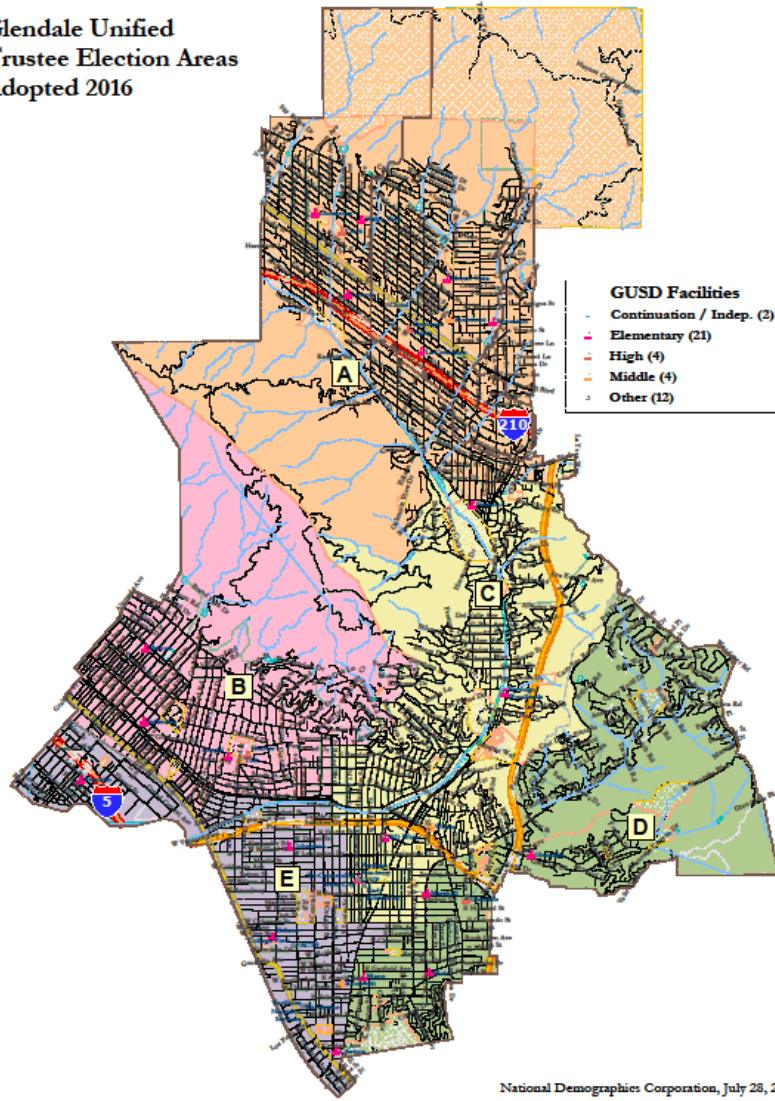
October 25, 2021

aa|rr
Atkinson, Andelson
Loya, Ruud & Romo
A Professional Law Corporation

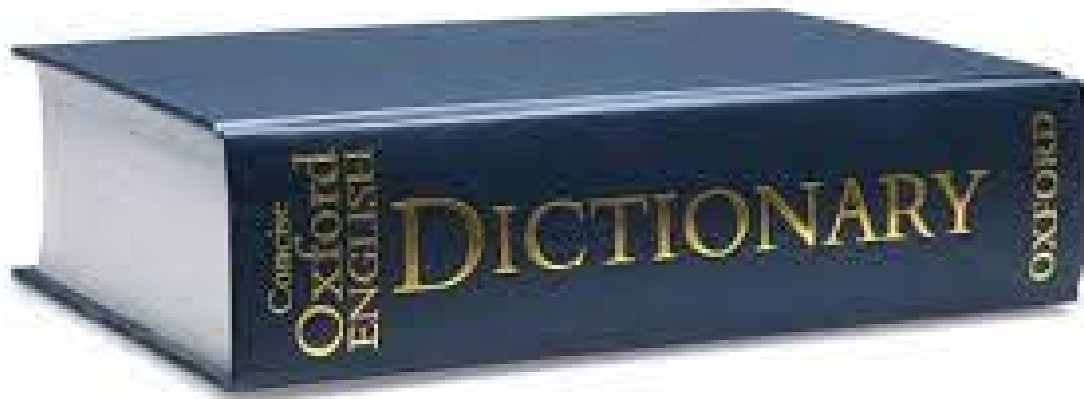
Presentation Overview

- We will discuss the process required by Education 5019.5 to update the District's Trustee Area Election Map

Glendale Unified
Trustee Election Areas
Adopted 2016



But First, Some Definitions and Background Information



At-Large Elections

Candidates must reside within the District's boundaries and are elected by all the voters who reside in the District's boundaries. (Education Code Section 5030(a).)

From-Trustee Area Elections

Candidates must reside in specific geographic areas within the District's boundaries called "Trustee Areas", but are elected by all the voters who reside in the District's boundaries. (Education Code Section 5030(c).)

By-Trustee Area Elections

Candidates must reside in specific Trustee Areas within the District's boundaries and are elected only by the voters who reside in the same Trustee Areas. (Education Code Section 5030(b).) ***This is the only method immune from liability under the CVRA*

New Requirements Since 2017

FAIR MAPS Act (2019)

- Assembly Bill 849 (2019), also known as “The Fair and Inclusive Redistricting for Municipalities and Political Subdivisions (FAIR MAPS) Act,” applies to cities and counties.
- The FAIR MAPS Act specifies certain aspects of the public engagement process, including the number of public hearings and workshops required, and requires engagement with non-English speaking communities.
- The Act also alters how prisoners are counted and assigns them to the last known place of residence for redistricting processes.
- The Act *does not apply* to School Districts.

Process for Updating Trustee Areas

Decennial Updates

- By Law, Trustee Areas must be updated following every decennial census. (Education Code Section 5019.5).
- The 2010 census results were released in April of 2011
- The 2020 census results were delayed and only released at the end of September of 2021
- Areas must be updated by February 28, 2022, or the County Committee on School District Organization must update at the District's cost and expense

Process for Updating Trustee Areas

Decennial Updates

- Areas must remain “population balanced” utilizing latest census data.
- A MUCH more truncated process than *creating* areas.
- No specific process requirement but we recommend at least one public hearing.
- No further approvals needed from SBE or County Committee on School District Organization.
- What if no significant population change?

Question & Answer

Thank You

For questions or comments, please contact:

{ David A. Soldani }
{ (559) 225-6700 }
{ dsoldani@aalrr.com }

aalrr

Atkinson, Andelson
Loya, Ruud & Romo
A Professional Law Corporation

Disclaimer

This AALRR presentation is intended for informational purposes only and should not be relied upon in reaching a conclusion in a particular area of law. Applicability of the legal principles discussed may differ substantially in individual situations. Receipt of this or any other AALRR presentation/publication does not create an attorney-client relationship. The Firm is not responsible for inadvertent errors that may occur in the publishing process.

© 2021 Atkinson, Andelson, Loya, Ruud & Romo