

Superintendent's Update Mental Health Services

Board of Education Meeting

September 14, 2021

Meeting No. 5



Excelling Together with Endless Pathways for Success!



Board of Education Priorities



Maximize Student Achievement

- Close the digital and equity gap.
- Offer robust in-person and independent study learning programs.
- Accelerate learning and improve attendance and engagement.

Foster a Positive Culture of Learning

- Ensure equitable teaching and learning opportunities led by excellence.
- Support culturally relevant curriculum that emphasizes inclusion.
- Increase school connectedness for students, parents, and families.

Ensure the Health and Safety of Students and Employees

- Strengthen mental health support and programs.
- Ensure best practices for safe and healthy learning environments.
- Support physical, social, and emotional wellbeing.

Maintain District Financial Responsibility

- Ensure the fiscal health of the District.
- Implement a fiscal plan to preserve the District resources.
- Plan for the District's future educational and facility needs.

Ensure the Health and Safety of Students and Employees

- Strengthen mental health support and programs.
- Ensure best practices for safe and healthy learning environments.
- Support physical, social, and emotional wellbeing.



Glendale Unified Restorative Restart: The Path Towards Reimagining and Rebuilding Schools



Understand Whole Child Needs.



Center Relationships Among Students, Educators and Families.



Strengthen Staffing to Address Student's Individualized Learning and Mental Health Needs.



Prioritize Inclusion, Relevance, and Rigor in Curriculum and Instruction.



Lay the Groundwork for Systemic Transformation and Build
Community-Based Partnerships



Glendale Unified Mental Health Services

Universal Mental Health Services

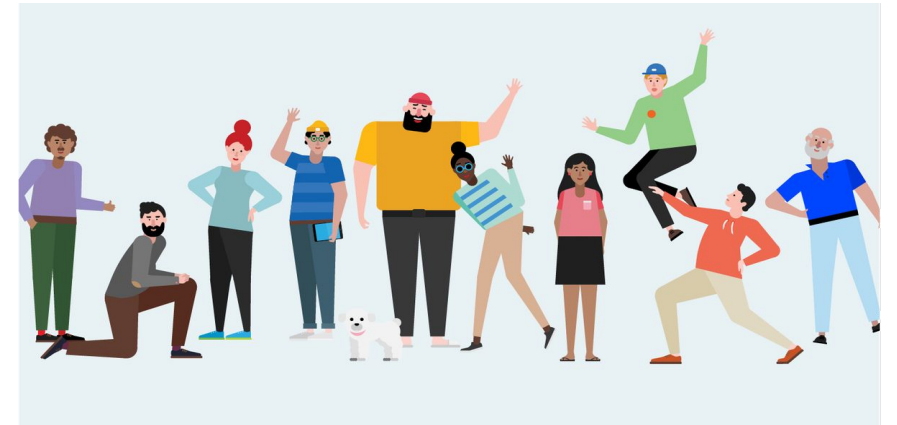
- Glendale Unified Student Wellness Services is always ready to serve students who need additional support
- School based counseling services
- Telehealth services
- Online counseling referral system for teachers and staff

Response to Intervention

- Tier 1: Universal support for all students
- Tier 2: Targeted support for some students who are at risk
- Tier 3: Individualized support for students with intensive and persistent challenges

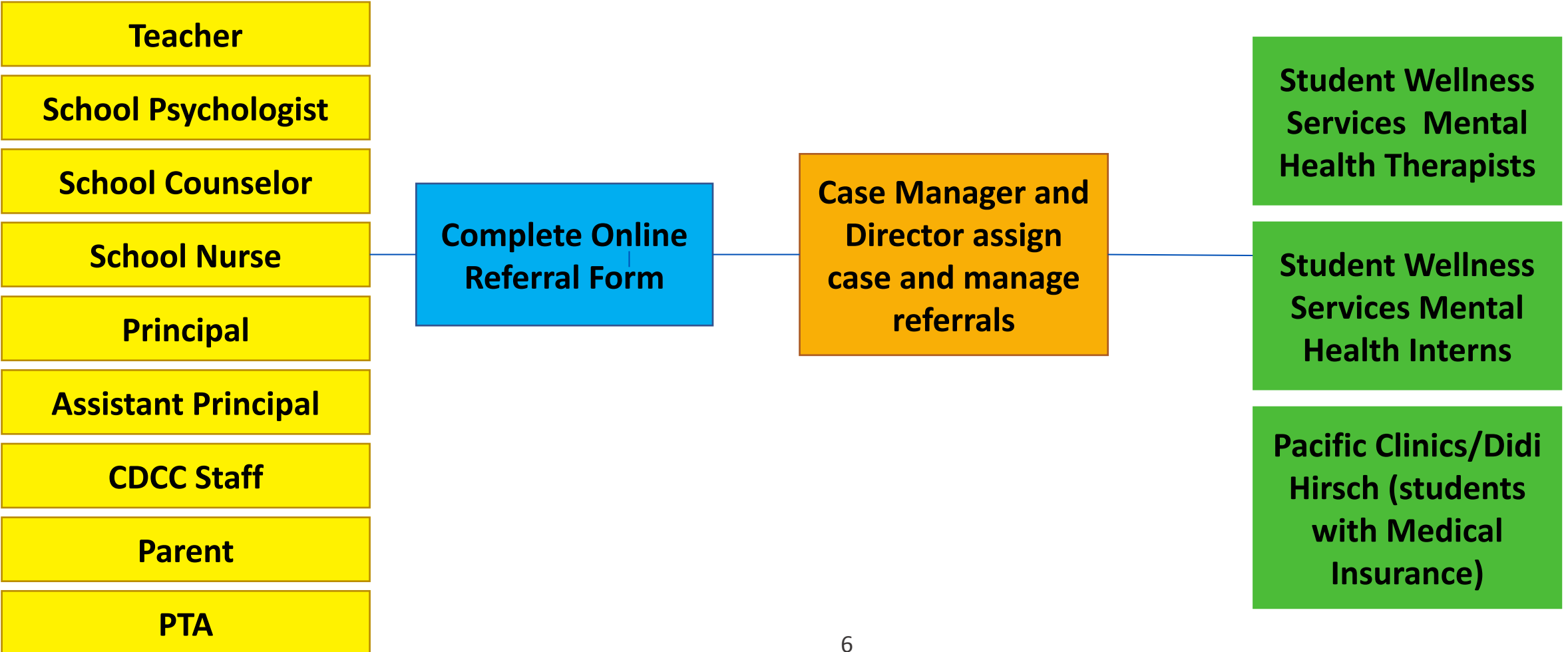
Student Wellness Services Case Review Team

- Student Wellness Services identifies, assesses, and coordinates mental health services.
- Once referrals are reviewed, students are assigned a therapist to best serve their needs.
- SWS staff continuously follow up to assess student progress and offer additional support when needed.
- Students are provided tools and connected to necessary resources for the duration of services.

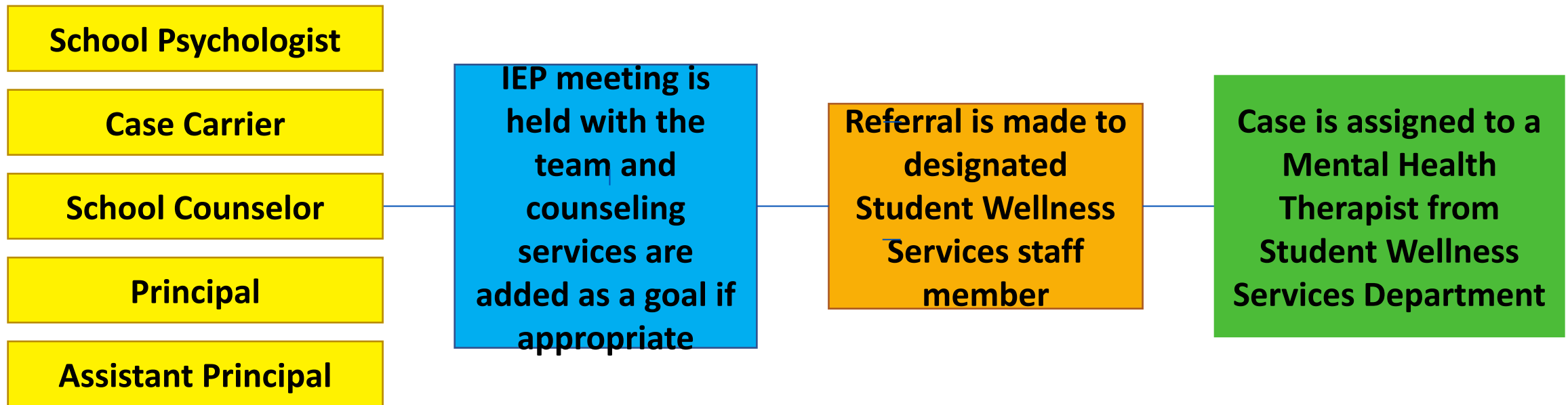




Key Players in Referring General Education Students and Students on a 504 Plan for Mental Health Services



Key Players in Referring Students on an IEP for Mental Health Services





**Virtual
Wellness
Room for
Students,
Employees,
and Families**

**QPR (Question,
Persuade, Refer) and
Youth Mental Health
First Aid Training
Opportunities for
Employees and Families**

**Mental
Health
Newsletters
and Videos
for Students,
Families, and
Community
Members**

Mental Health Services Provided

**Individual
Counseling for
Students**

**Professional
Development
Opportunities
for Teachers
and Staff**

**Parent and Family
Support Groups at
Elementary, Middle,
and High Schools**

**Student
Support
Groups at
Elementary,
Middle, and
High Schools**

**Virtual
Mindfulness
Resources
and
Workshops**

**Self-Care
Workshops
for Educators**

Partners in Our Work

Los Angeles County Department of Mental Health
Los Angeles County Office of Education
American Heart Association
Glendale Youth Alliance
Dignity Health Glendale Memorial Hospital
Armenian American Mental Health Association
NAMI Glendale
Didi Hirsch
Pacific Clinic





STUDENT
WELLNESS
SERVICES



Mental Health Forum: Suicide Prevention Awareness

Tuesday, September 21 | 5:30 P.M.

Please join us to discuss important matters impacting our youth's mental health, suicide prevention, importance of good mental health, and resources that are available to our students and families.

*Supporting the social and emotional needs of students
and families on the road to academic success!*

Panelists Include:

Dr. Vivian Ekchian, GUSD Superintendent
Dr. Ilin Magran, Director of SWSD
Dr. Laurel Bear, Educational Consultant
Aden Michael, LCSW
Corrine Ochipinti, LCSW
Geraldine Gomez, LCSW
Victoria Montenegro, LCSW

WATCH LIVE
Via Zoom!

For registration and to submit questions, please visit www.gusd.net/September21

Glendale Unified School District
223 N. Jackson Street, Glendale, CA 91206
(818) 241-3111 | www.gusd.net | @GlendaleUSD



Register and submit questions at
www.gusd.net/September21



Questions?