



Glendale Educational Foundation Update

**Board of Education Presentation
September 14, 2021**

THANK YOU

Glendale Unified
School District **Community**

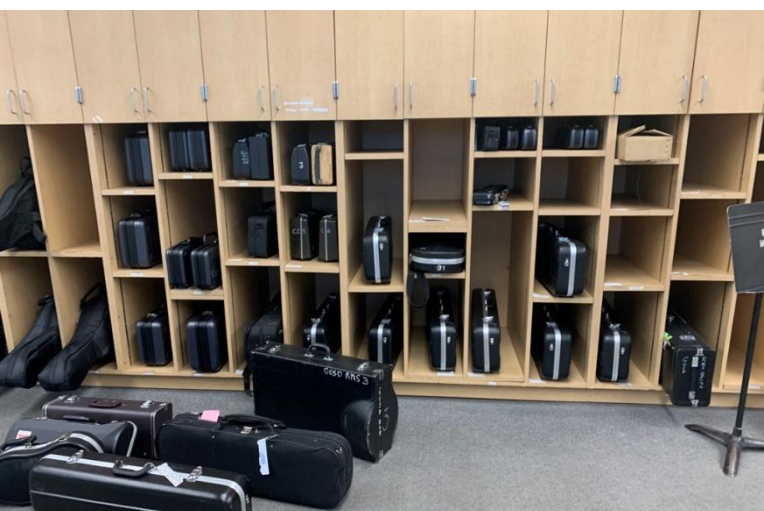


Together we are indeed better!

What did GEF fund in 2020-21?

(funds raised in 2019-20)

Key Focus Area	Purpose	Amount
Visual and Performing Arts (VAPA)	Music Matters <ul style="list-style-type: none">• 4 Middle Schools• 3 High Schools	\$58,600
Science & Technology	STEM Instruction/Engagement at 20 Elementary Schools	\$23,200
Health & Wellness	GUSD's Discretion <ul style="list-style-type: none">• PE equipment for 20 Elementary Schools and College View	\$23,200



What we saw on campus

Jefferson ES and Roosevelt MS



Funding Priorities for 2021-22

Science & Technology

- Pre-established emphasis on **Science, Technology, Engineering, Arts and Mathematics (STEAM)**
- GEF will direct **\$55,500** to the 20 elementary schools to support STEAM integration.
- Principal surveys show priority interest in coding, robotics, STEAM after school clubs and arts integration.
- GEF should provide guidelines to clarify its intention regarding use of funds for arts integration.
- **Distribution:** funds will be allocated per pupil per school (approximately \$4 per student)

GUSD Leaders' Input

- **STEAM** engagement opportunities are generally more robust across the middle and high school level.
- The Career and Technical Education (CTE) pathways that are **STEAM-based** are well-articulated at the middle and high school level.
- There is a need to **accelerate the elementary schools' access to STEAM engagement** so that the students have a deeper learning experience to leverage once they transition to middle school.

Principal Survey Findings

Survey window: April 22 - May 14, 2021

Respondents by School Type

18 responses; 1 duplicate response

- 2 high schools
- 2 middle schools
- 14 elementary schools (1 response received after the Committee analysis)
- 1 unknown type

Types of engagement desired– Elementary School

- Coding 4 schools
- Engineering 1 school
- Robotics 3 schools
- Afterschool STEAM clubs 3 schools
- Arts instruction 5 schools

(30 schools surveyed via email)



Funding Priorities to 2021-22

Visual and Performing Arts

- GEF will provide **\$25,000** to GUSD as a matching grant for a LA County Arts Ed Collective Advancement Grant that it will receive in 2021-22. The LA County grant award funding comes from the LA County Department of Arts and Culture.
- This funding priority project was approved by the GEF Board of Directors on March 4, 2021 via email polling.
- Grant will support the implementation of **Visual and Performing Arts** instruction through expert artists in four disciplines: music, dance, visual arts and theatre.
- Program will be delivered by video instruction and will reach all 20 elementary schools with 6-week lessons in all four disciplines.
- Distribution of funds to the Teaching and Learning division will be in October 2021.



Funding Priorities for 2021-22

Health and Wellness

GEF will direct **\$23,500** to the **Student Wellness** division to provide **stipends for the mental health interns** serving GUSD over the 2021-22 school year.

Program components:

- **28 mental health interns** (5 school counselors, 5 marriage and family therapists and 18 social work interns) will be supervised by the Student Wellness division.
- Internship runs from August 23rd until the **end of the school year**.
- Social work and MFT interns **serve two full days a week** at GUSD schools.

Anticipated outcomes

- Interns will see between 15-28 students a week (individual contact).
- Interns will run student groups, parent support groups and work on creating videos and newsletters which are utilized by our students, teachers and parents.
- **Approximately 700 students served.**



2021-2022 GEF Programs and Strategies

Teacher Grant Program

- \$20,000 to be available in direct grants to GUSD teachers to support our three priority areas. Awards average \$1,000 (except in the case of collaborative projects). **Applications due October 22, 2021.**
- Funds are raised through individual contributions, grants, corporate support
 - Diane Huntley, Hoover High School, 1969
 - USC Verdugo Hills Hospital
 - Sunrise Rotary Club
- 2021-2022 Program is underway. Applications are coming in. Information sessions scheduled for September 9th, 16th, and 22nd. We are adding a community of practice element to the program, with two touch points with the grantee cohort.

2018/19 Teacher Grant Recipient

Janet Goldsbury

Roosevelt Middle School

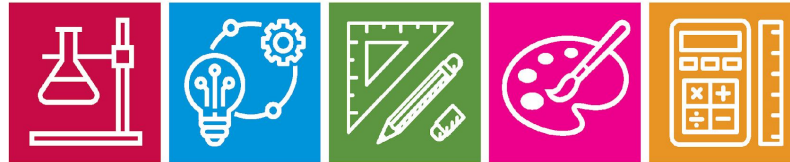
African Drum Circle!

The goal of this grant was to promote creative expression, expose students to the diversity of music from different cultures, and learn fundamental music theory. GEF grant funds helped purchase African drums.



Upcoming Event

THE 17TH ANNUAL *VIRTUAL*
State of the Schools Breakfast



THURSDAY, SEPTEMBER 30 | 8:00 - 9:00 AM

Live broadcast from the Glendale Civic Auditorium on
[www.Facebook.com/GlendaleEducationalFoundation](https://www.facebook.com/GlendaleEducationalFoundation) and www.glened.org

SALUTING OUR EDUCATIONAL EXCELLENCE AWARDEES —

California Credit Union and
Roxanne O'Rourke, Teacher of the Year, Horace Mann ES



VIRTUAL "TICKETS"		SPONSORSHIP	
Individual	\$35	Platinum	\$5,000
Family	\$250	Gold	\$2,500
		Silver	\$1,000
		Copper	\$500

Donate at <https://www.glened.org>

Proceeds to benefit *Science, Technology, Engineering, Arts and Mathematics (STEAM)* and other instructional programs. Contributions are tax deductible to the extent allowed by law. Tax ID #95-3815676

1125 East Broadway #391
 Glendale, CA 91205
 (818) 247-0466
www.glened.org



Like us on:
[Facebook.com/GlendaleEducationalFoundation](https://www.facebook.com/GlendaleEducationalFoundation)
[instagram.com/glened.org](https://www.instagram.com/glened.org)



Please follow GEF on Facebook, Twitter, Instagram and LinkedIn!

For more information, contact:

Jennifer Cano

Executive Director

818.247.0466

jennifer@glened.org