

GLENDALE UNIFIED SCHOOL DISTRICT

September 3, 2013

DISCUSSION REPORT NO. 3

TO: Board of Education

FROM: Dr. Richard M. Sheehan, Superintendent

SUBMITTED BY: Dr. Kelly King, Assistant Superintendent, Educational Services

SUBJECT: **Dual Immersion Program Update**

This report will provide information requested by Board members during the August 13, 2013 Board Meeting.

It is the District's intention to create a K-12 Dual Immersion Master Plan that details the matriculation pathways for each of the seven language programs. Decisions that need to be made include:

- Location of the current dual immersion programs.
- How far each program should be taken: K-6, K-8, or K-12.

In preparation for making these decisions, Board members asked for more information regarding the options for the Japanese dual immersion program currently housed at Verdugo Woodlands and the Korean dual immersion program that is housed at Monte Vista Elementary School.

This report will provide the Board of Education the opportunity to discuss the dual immersion program at these two schools in more depth, with continued discussion planned for the September 17, 2013 Board meeting.

Glendale Unified School District
Board of Education Meeting No. 4
September 3, 2013



Discussion Report No. 3
Dual Immersion Program Update

Elementary School Size Considerations

- Board Policy 7115, Section B(1)

“The District’s long-range goal should be to limit enrollment at elementary schools to approximately 600-800 students...”

Other Considerations

- Current Classroom Availability
- Space for Increased # of Classrooms
- Impact on Traffic (Drop off and Pick up)
- Impact on School Facilities (cafeteria, library, lunch, etc.)

Monte Vista

(Korean)

- Currently Monte Vista does not have the classroom space necessary to house the Korean program, K-6
- Need to decide where the K-6 Korean program will be housed and then decide where the students will matriculate to for middle and high school

Options for the Korean FLAG Program

1. Keep Korean program at Monte Vista by decreasing to one Kindergarten class
2. Keep Korean program at Monte Vista by adding classrooms to the school site
3. Move the Korean program, Gr. 4-6 to another school
4. Move the Korean program, K-6 to another school
5. Move the Korean program to middle school Gr. 6-8
6. Move all 6th graders to middle school

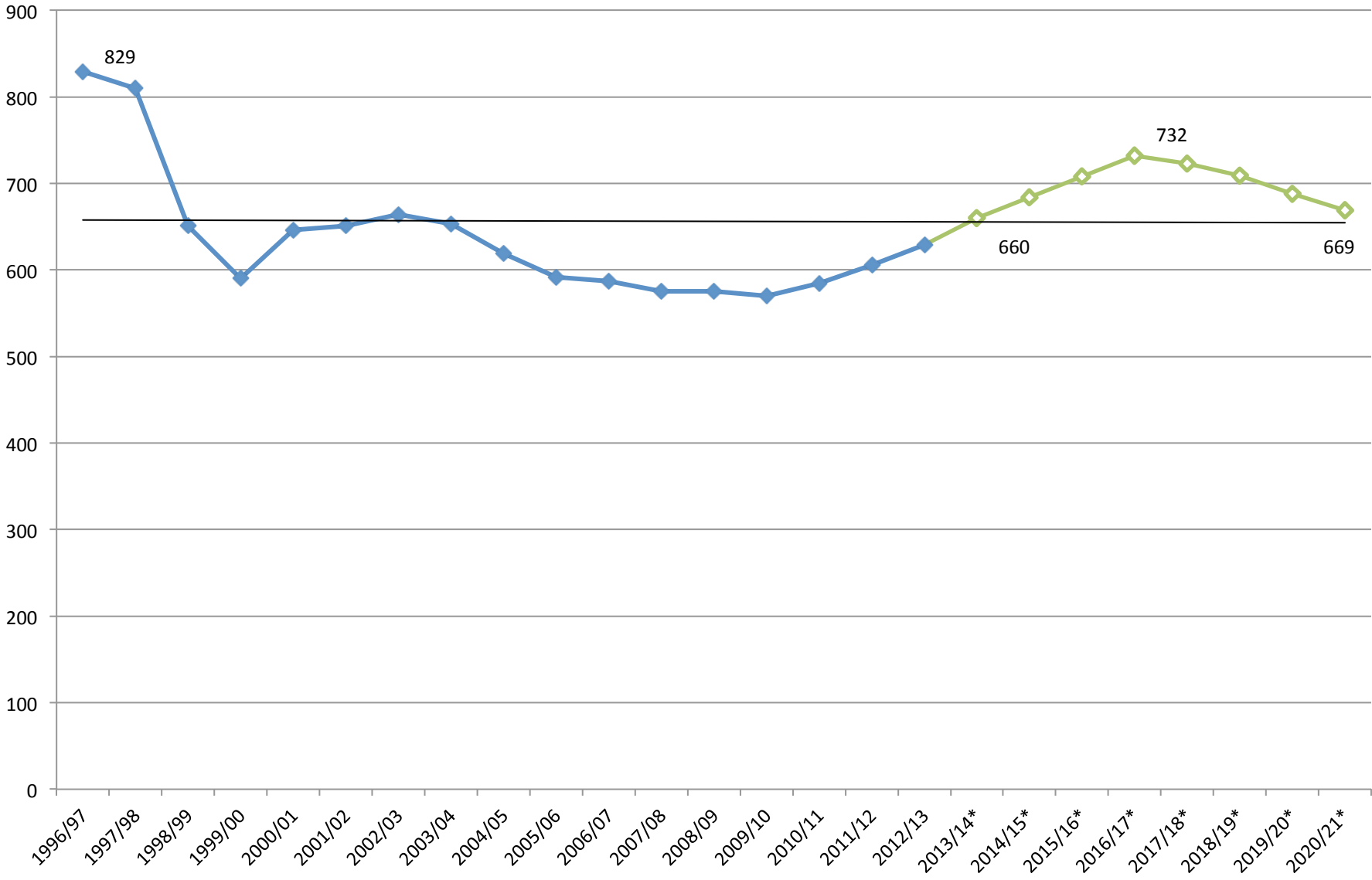
Option 1

Keep Korean program at Monte Vista by decreasing to one Kindergarten class

Pros: decreases the overall dual program size from 12 rooms to 6 rooms

Cons: change in the instructional model;
teachers would have to team across grade levels in primary grades (K&1, 2&3);
less access for new dual students

Monte Vista w/ 1 dual class per year, K-6



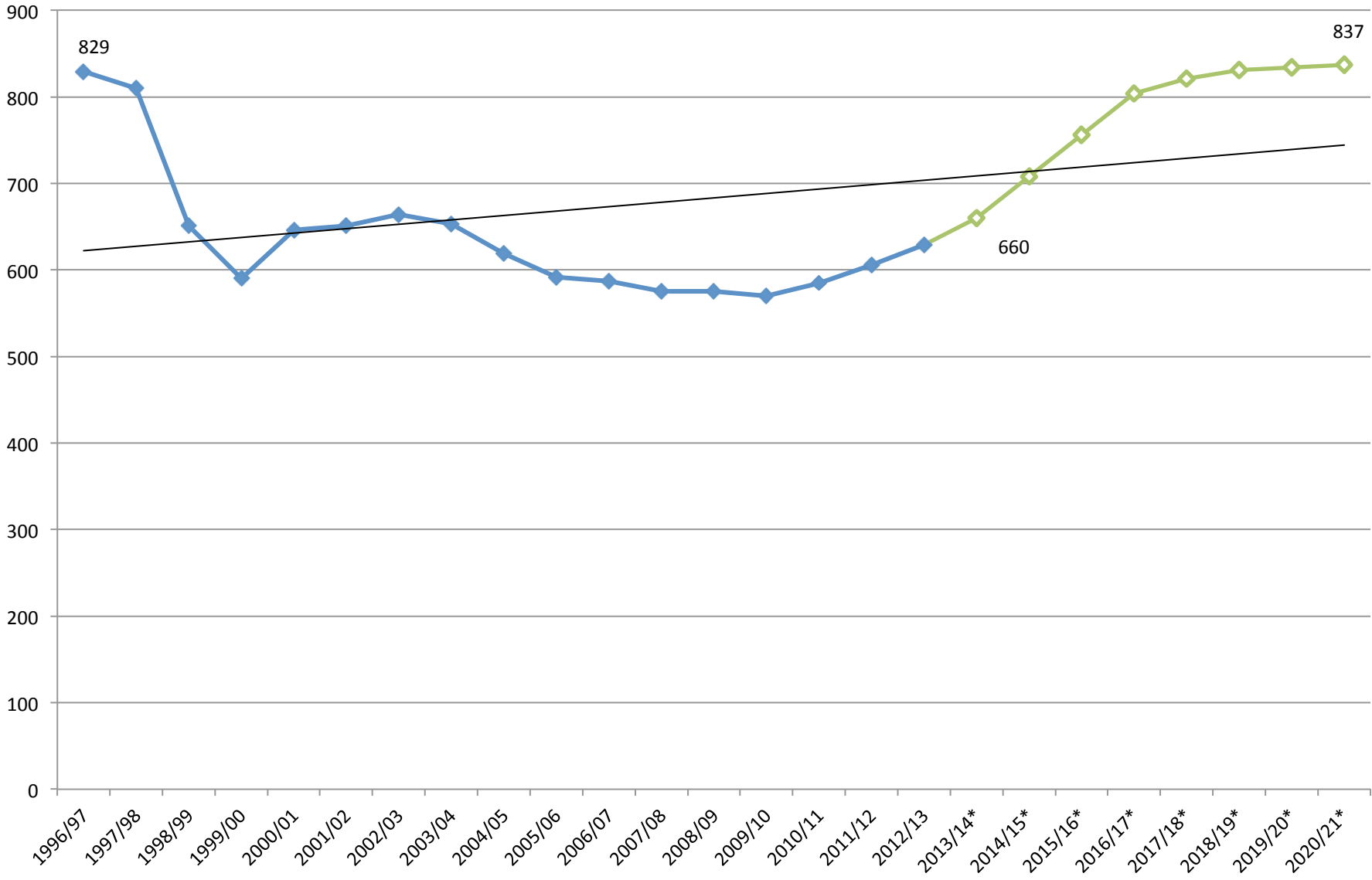
Option 2

Keep Korean program at Monte Vista by adding classrooms to the school site

Pros: program stays at original site, K-6;
total number of students would not exceed
previous enrollment

Cons: would need to add approximately 3 classrooms to
the site

Monte Vista w/ 2 dual classes per year, K-6



Option 3

Move the Korean program, Gr. 4-6 to another school

Pros: program stays at original site, K-3

Cons: families with multiple children would have more than one school;
difficulty establishing roots in a school for 3-4 years;
limited teaming opportunities for dual teachers

Option 4

Move the Korean program, K-6 to another school

Pros: program stays at a single site, K-6

Cons: would need a transition plan;
difficulty integrating into a new school community;
other school site may need more rooms

Option 5

Move the Korean program to middle school Gr. 6-8

Pros: all middle schools would be 6-8;
students would have three years at Rosemont

Cons: small number of 6th graders at Rosemont;
resistance to 6-8 middle school model;
attrition from dual program

Option 6

Move all Monte Vista 6th graders to middle school

Pros: all middle schools would be 6-8;
students would have three years at Rosemont

Cons: possible resistance to the 6-8 middle school model;
attrition from dual program

Verdugo Woodlands (Japanese)

- Currently Verdugo Woodlands does not have the classroom space necessary to house the Japanese program, K-6, and does not have enough rooms for 2014/2015
- Need to decide where the K-6 Japanese program will be housed and then decide where the students will matriculate to for middle and high school

Options for the Japanese FLAG Program

1. Keep Japanese program at Verdugo Woodlands by decreasing to one Kindergarten class
2. Keep Japanese program at Verdugo Woodlands by adding classrooms to the school site
3. Move the Japanese program, Gr. 4-6
4. Move the Japanese program, K-6
5. Move the Japanese program to middle school Gr. 6-8
6. Move all 6th graders to middle school

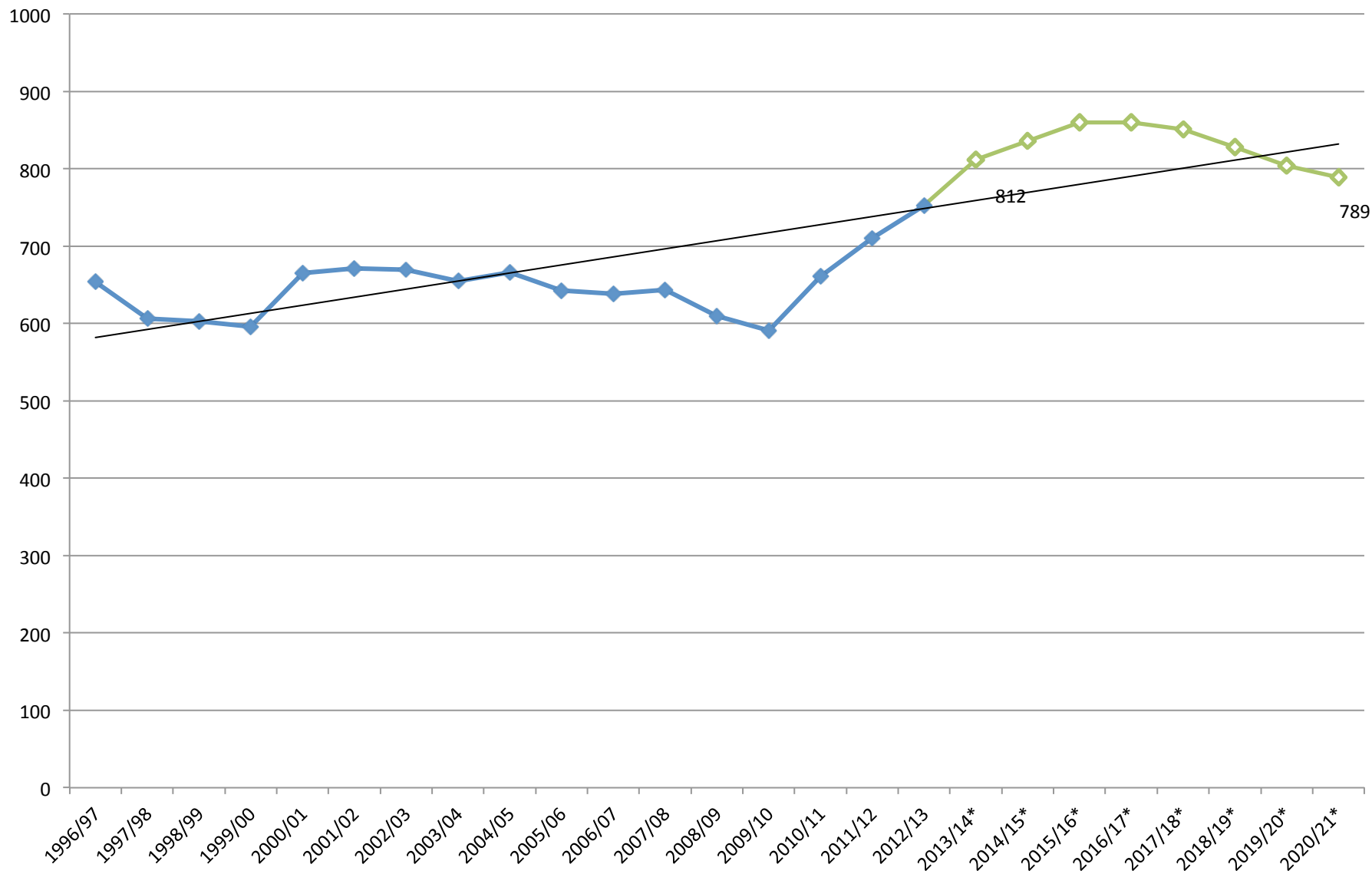
Option 1

Keep Japanese program at Verdugo Woodlands by decreasing to one Kindergarten class

Pros: decreases the overall dual program size from 12 rooms to 6 rooms

Cons: change in the instructional model;
teachers would have to team across grade levels in primary grades (K&1, 2&3);
less access for new dual students

Verdugo Woodlands w/ one dual class per year, K-6



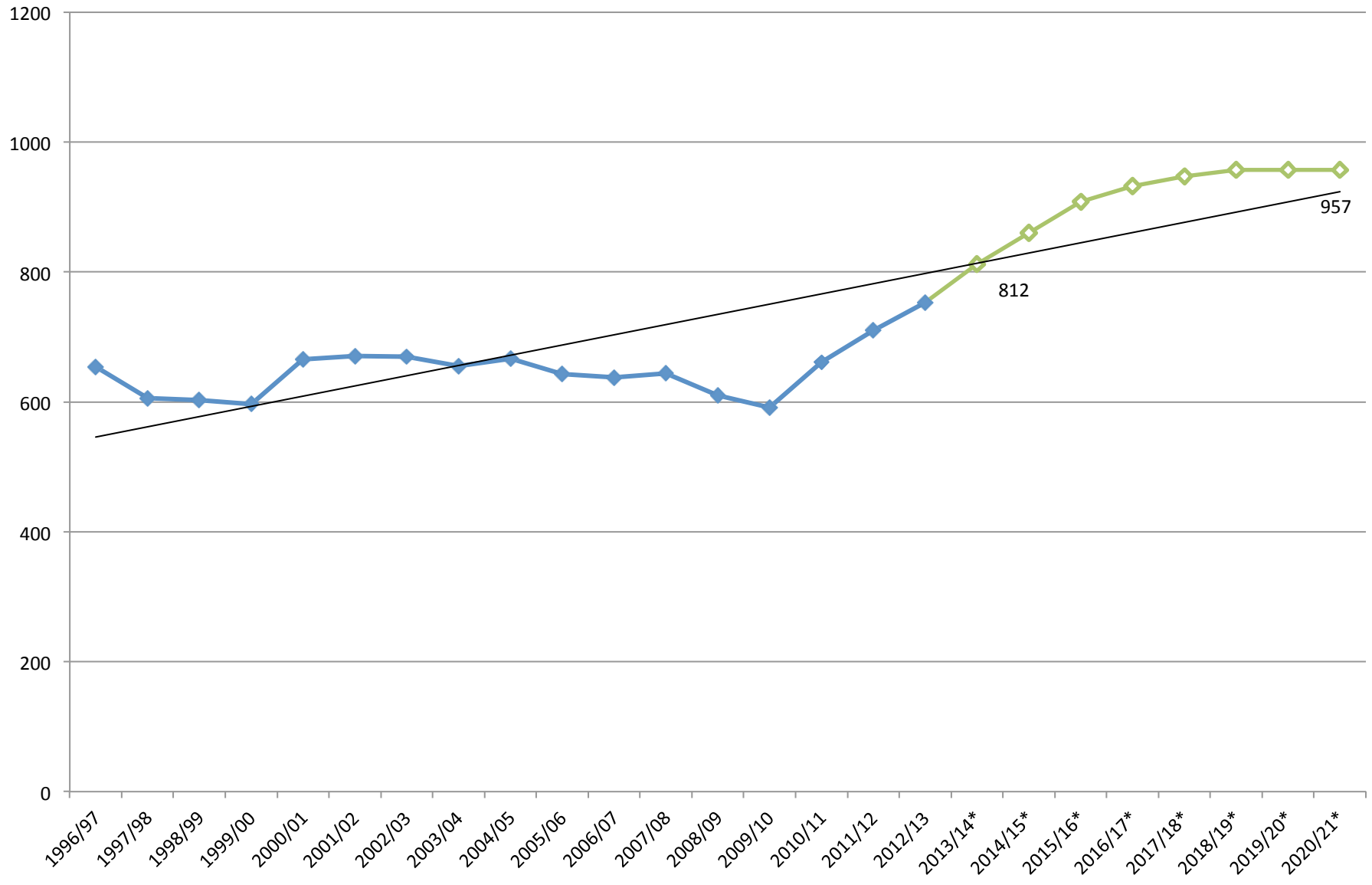
Option 2

Keep Japanese program at Verdugo Woodlands by adding classrooms to the school site

Pros: program stays at original site, K-6

Cons: would need to add 2-3 classrooms to the site even with the new construction of the new school building; traffic would be further impacted; not enough acreage for additional classrooms; school was not designed for that number of students; cafeteria capacity is already stretched

Verdugo Woodlands w/ two dual classes each year, K-6



Option 3

Move the Japanese program, Gr. 4-6 to another school

Pros: program stays at original site, K-3

Cons: families with multiple children would have more than one school;
difficulty establishing roots in a school for 3-4 years;
limited teaming opportunities for dual teachers

Option 4

Move the Japanese program, K-6 to another school

Pros: program stays at a single site, K-6

Cons: would need a transition plan;
difficulty integrating into a new school community;
other school site may need more rooms

Option 5

Move the Japanese program to middle school Gr. 6-8

Pros: all middle schools would be 6-8;
students would have three years in middle school

Cons: small number of 6th graders at Rosemont (if Rosemont is chosen as the receiving school);
resistance to 6-8 middle school model;
attrition from dual program

Option 6

Move all Verdugo Woodlands 6th graders to middle school

Pros: all middle schools would be 6-8;
students would have three years in middle school

Cons: possible resistance to the 6-8 middle school model;
attrition from dual program