

GLENDALE UNIFIED SCHOOL DISTRICT

August 13, 2013

DISCUSSION REPORT NO. 1

TO: Board of Education

FROM: Dr. Richard M. Sheehan, Superintendent

SUBMITTED BY: Dr. Kelly King, Assistant Superintendent, Educational Services

SUBJECT: **Dual Immersion Program Update**

This report will provide initial information requested by Board members during the August 7, 2013 Special Board Meeting. At the Special Board Meeting, a presentation was given regarding the history, current status, and future needs of the District's dual immersion programs.

It is the District's intention to create a K-12 Dual Immersion Master Plan that details the matriculation pathways for each of the seven language programs. Decisions that need to be made include:

- Location of the current dual immersion programs.
- How far each program should be taken: K-6, K-8, or K-12.

In preparation for making these decisions, Board members asked for more information regarding an analysis of school capacity, examples from other secondary schools that have dual immersion programs, and an analysis of the future recruitment pool for the programs and the possible impact other districts may have in granting or denying permits. In particular, information was requested regarding the options for the Japanese dual immersion program currently housed at Verdugo Woodlands and the Korean dual immersion program that is housed at Monte Vista Elementary School.

This report will provide the Board of Education the opportunity to discuss the dual immersion program in more depth, with continued discussion planned for the September 3, 2013 Board meeting.

Glendale Unified School District
Board of Education Meeting No. 3
August 13, 2013



Discussion Report No. 1
Dual Immersion Program Update

Strength of Recruitment

The table shows the size of the incoming Kindergarten class(es) by program and how many applicants are currently on the wait list for each program.

Program	# of Spaces for Kdgn	# Enrolled as of 8/12/13	# on Wait List as of 8/12, could be on multiple lists
Armenian - Jefferson	48	48	32
Armenian – RD White	48	48	29
French	24	24	83
German	24	24	23
Italian	24	24	54
Japanese	48	47	8
Korean – Keppel	48	44	7
Korean – Monte Vista	48	45	9
Spanish – Edison	72	72	102
Spanish – Franklin	24	24	113
Spanish - Muir	48	38	8

Elementary School Size Considerations

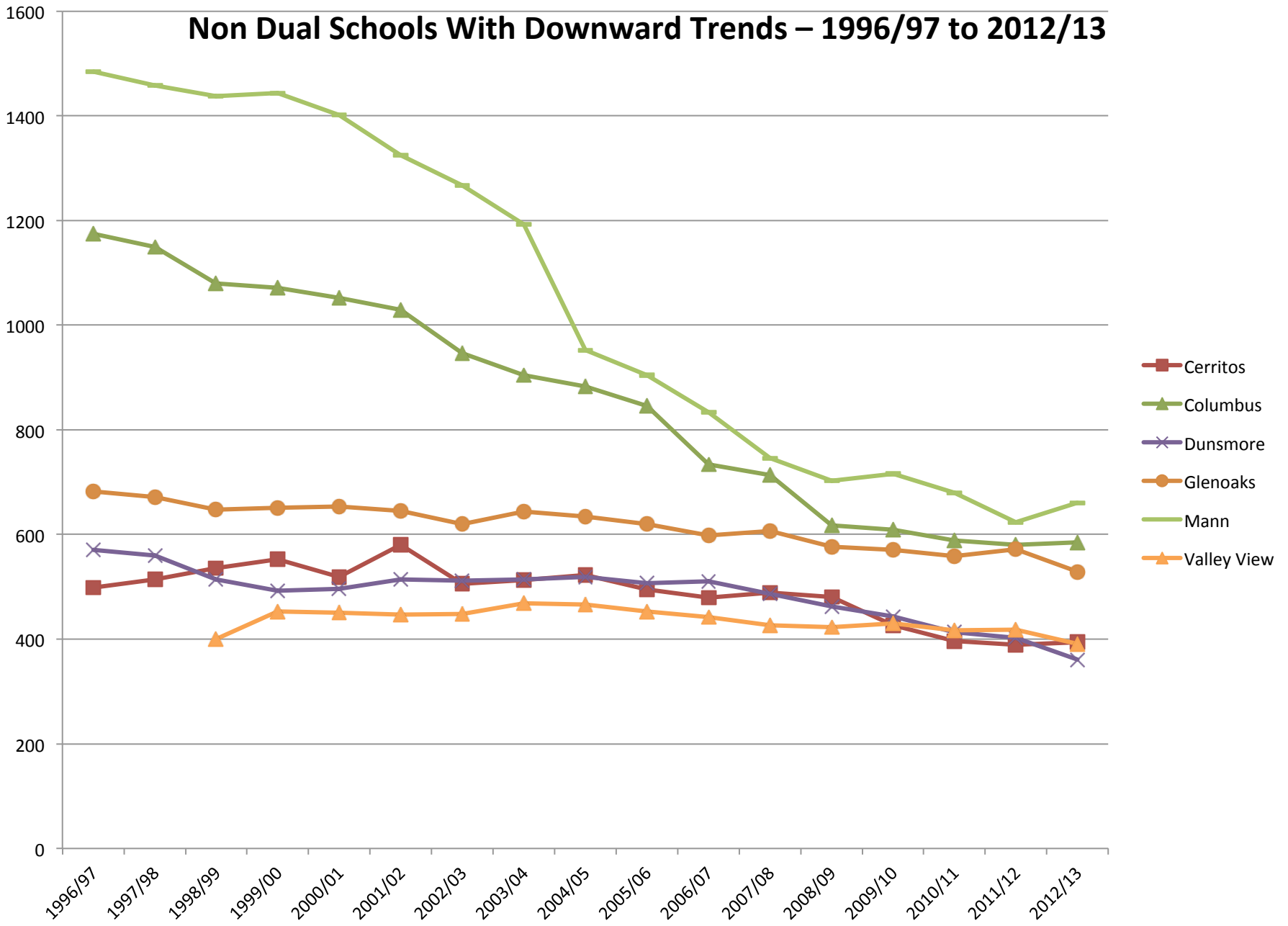
- Board Policy 7115, Section B(1)

“The District’s long-range goal should be to limit enrollment at elementary schools to approximately 600-800 students...”

Non-Dual Elementary Schools

- Balboa
- Cerritos
- Columbus
- Dunsmore
- Fremont
- Glenoaks
- La Crescenta
- Lincoln
- Mann
- Marshall
- Mountain Ave.
- Valley View

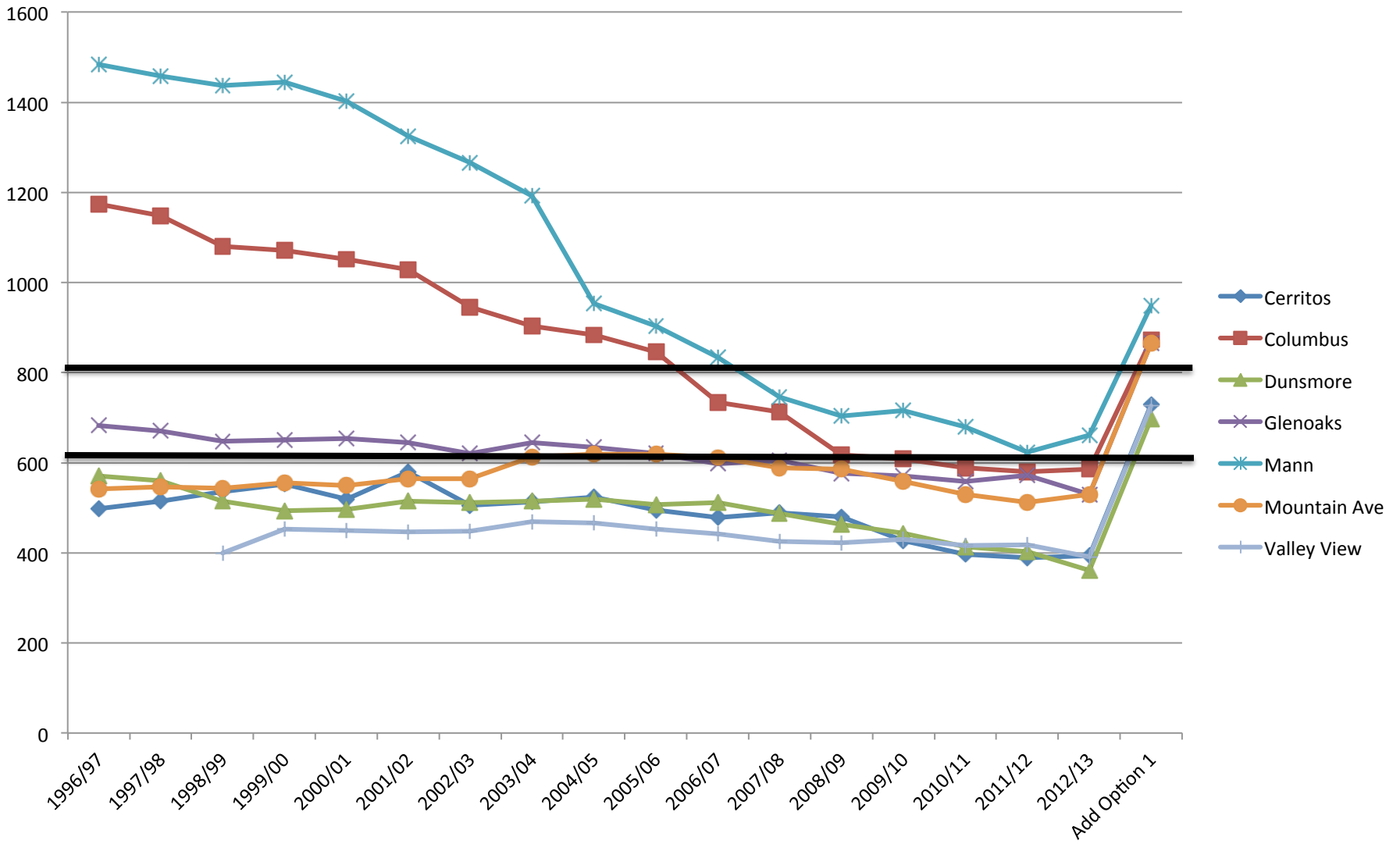
Non Dual Schools With Downward Trends – 1996/97 to 2012/13



Impact of Dual Program on Enrollment

- Option 1: Programs with two kindergarten classes:
 - 48 students x 7 grade levels (K-6) = 336 students not counting for attrition
 - 48 students x 6 grade levels (K-5) = 288 students not counting for attrition
- Option 2: Programs with only one kindergarten class:
 - 24 students x 7 grade levels (K-6) = 168 students not counting for attrition
 - 24 students x 6 grade levels (K-5) = 144 students not counting for attrition

School Size with Option 1
2 Dual Kdgn Classes Each Year
Addition of 336 (K-6) or 288 (K-5) Dual Students

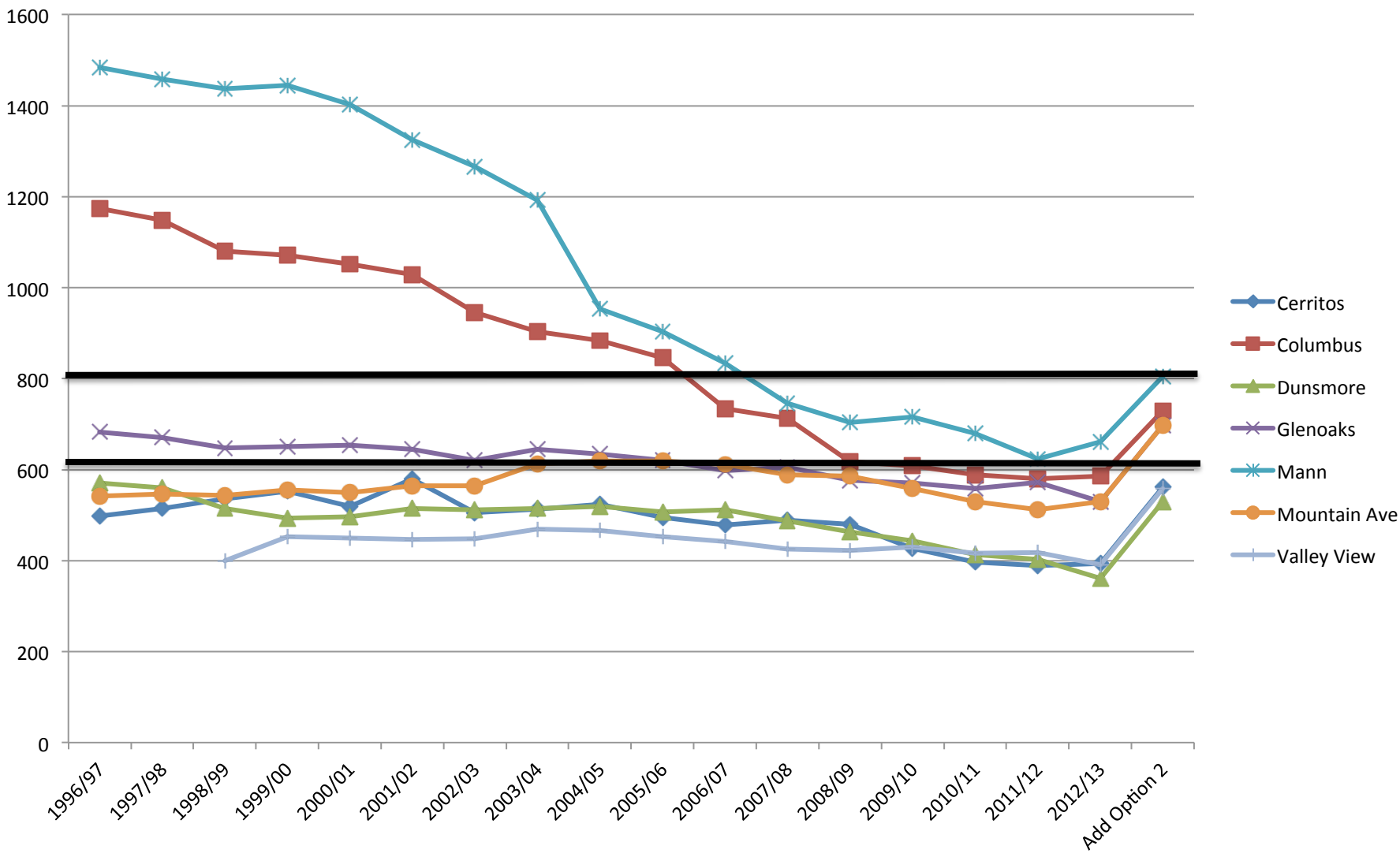


Potential Option 1 Schools

(2 Dual Kdgn Classes Each Year)

- Cerritos
- Dunsmore
- Valley View

Possible Option 2 Schools
1 Dual Kdgn Class Each Year
Addition of 168 (K-6) or 144 (K-5) Dual Students



Potential Option 2 Schools

(1 Dual Kdgn Class Each Year)

- Cerritos
- Columbus
- Dunsmore
- Glenoaks
- Mountain Avenue
 - Valley View

Other Considerations

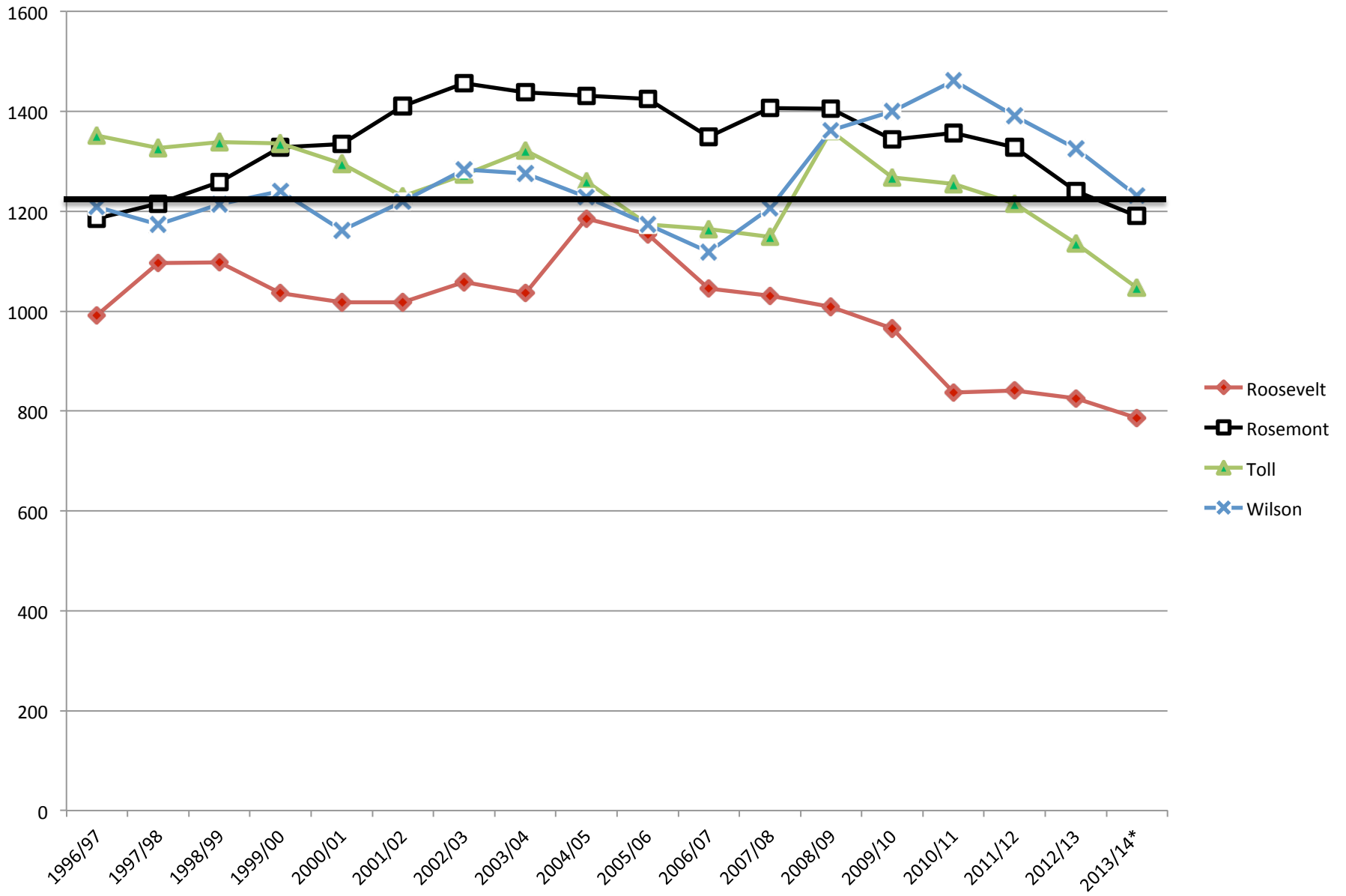
- Current Classroom Availability
- Space for Increased # of Classrooms
- Impact on Traffic (Drop off and Pick up)
- Impact on School Facilities (cafeteria, library, lunch, etc.)

Middle School Size Considerations

- Board Policy 7115, Section B(1)

The District's long-range goal should be to limit enrollment at ...middle schools to approximately 1200....

Middle School Enrollment Patterns

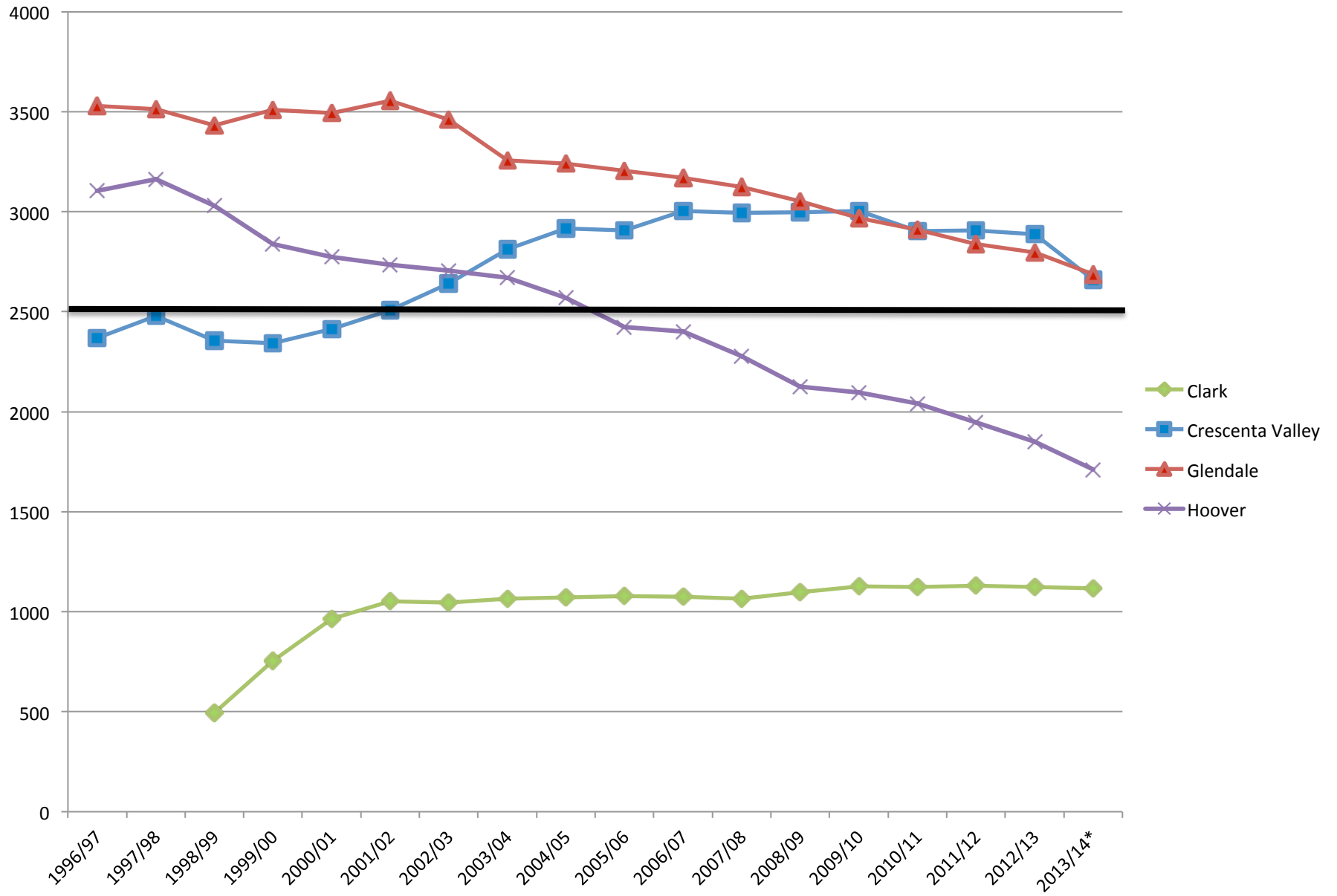


High School Size Considerations

- Board Policy 7115, Section B(1)

The District's long-range goal should be to limit enrollment at ...high schools to approximately 2500...

High School Enrollment Patterns

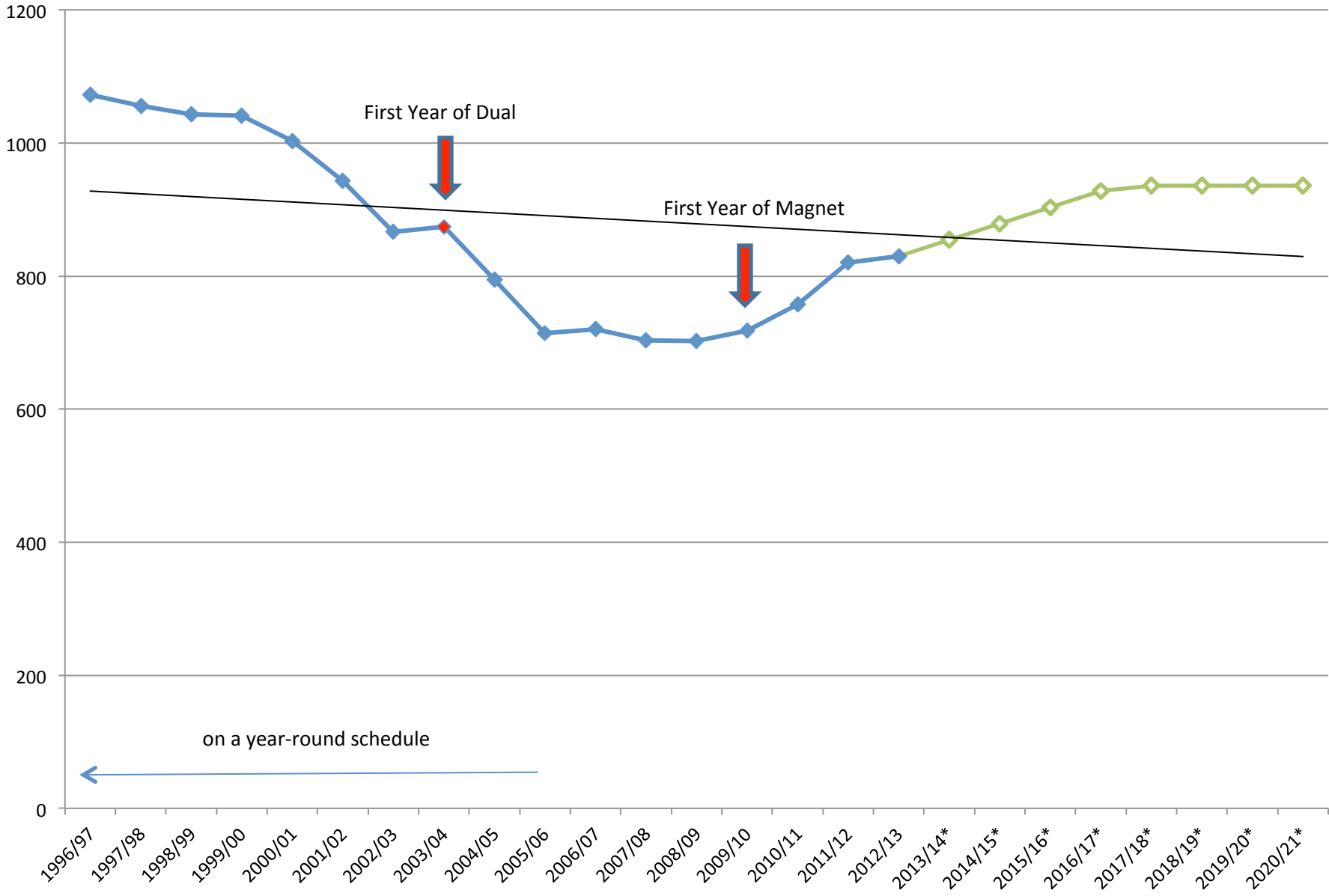


Additional Information Not
Included In the Presentation

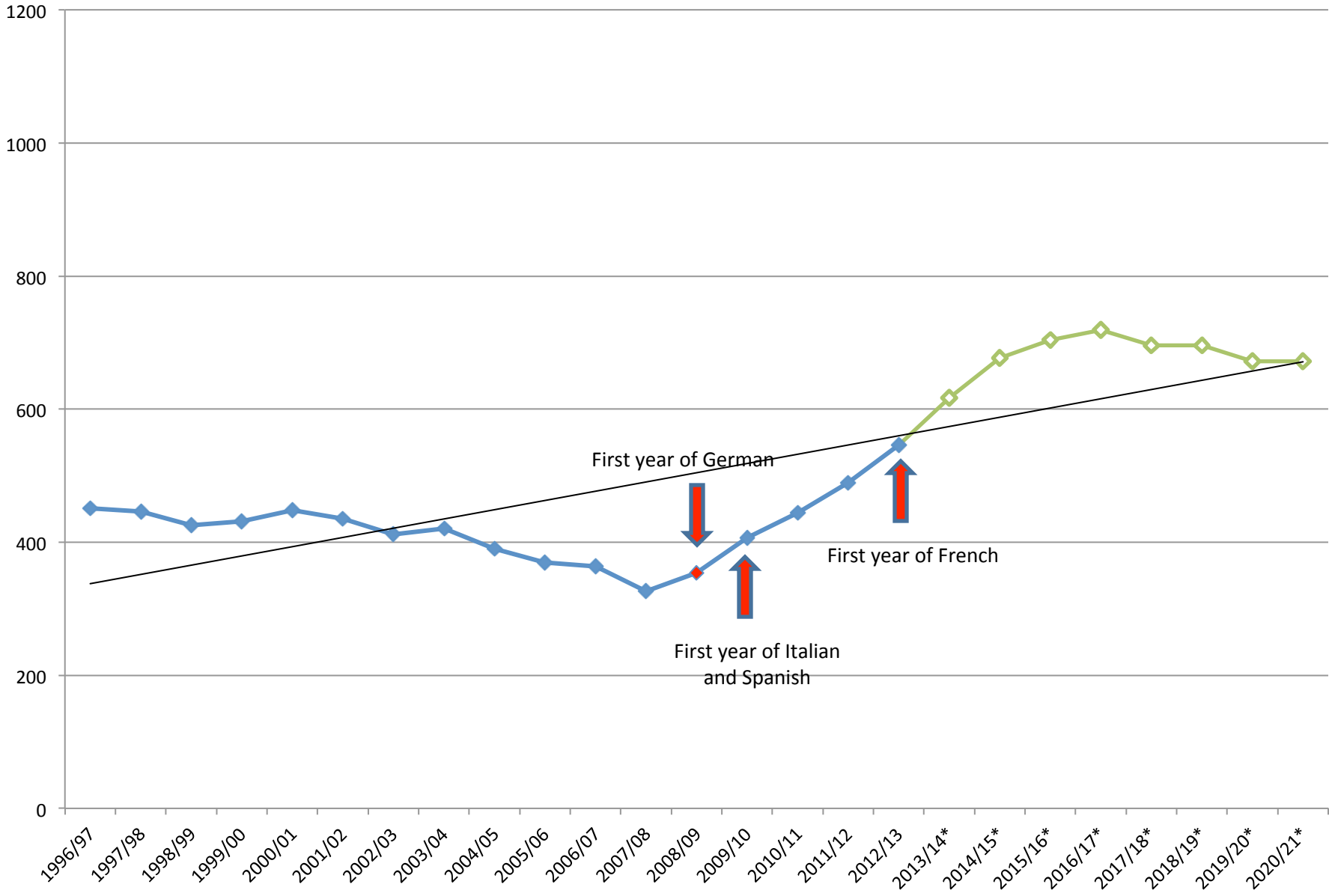
Analysis of Elementary School Capacity

- For current dual schools we've looked at the enrollment patterns of the English program compared to the growth of the dual immersion program and projected both 7 years
- For schools that do not have a dual program we've looked at their long-term enrollment pattern and projected it out 7 years

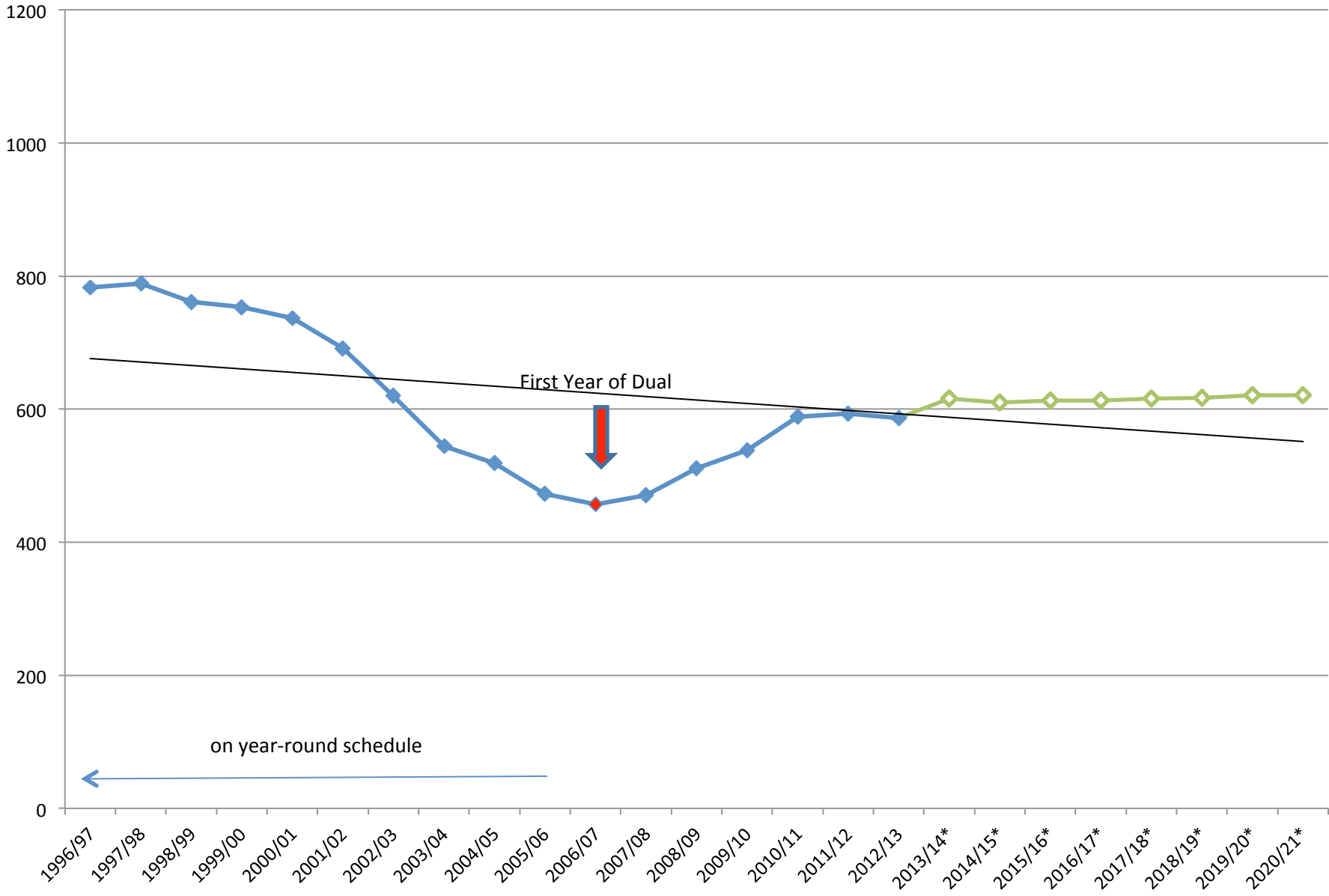
Edison



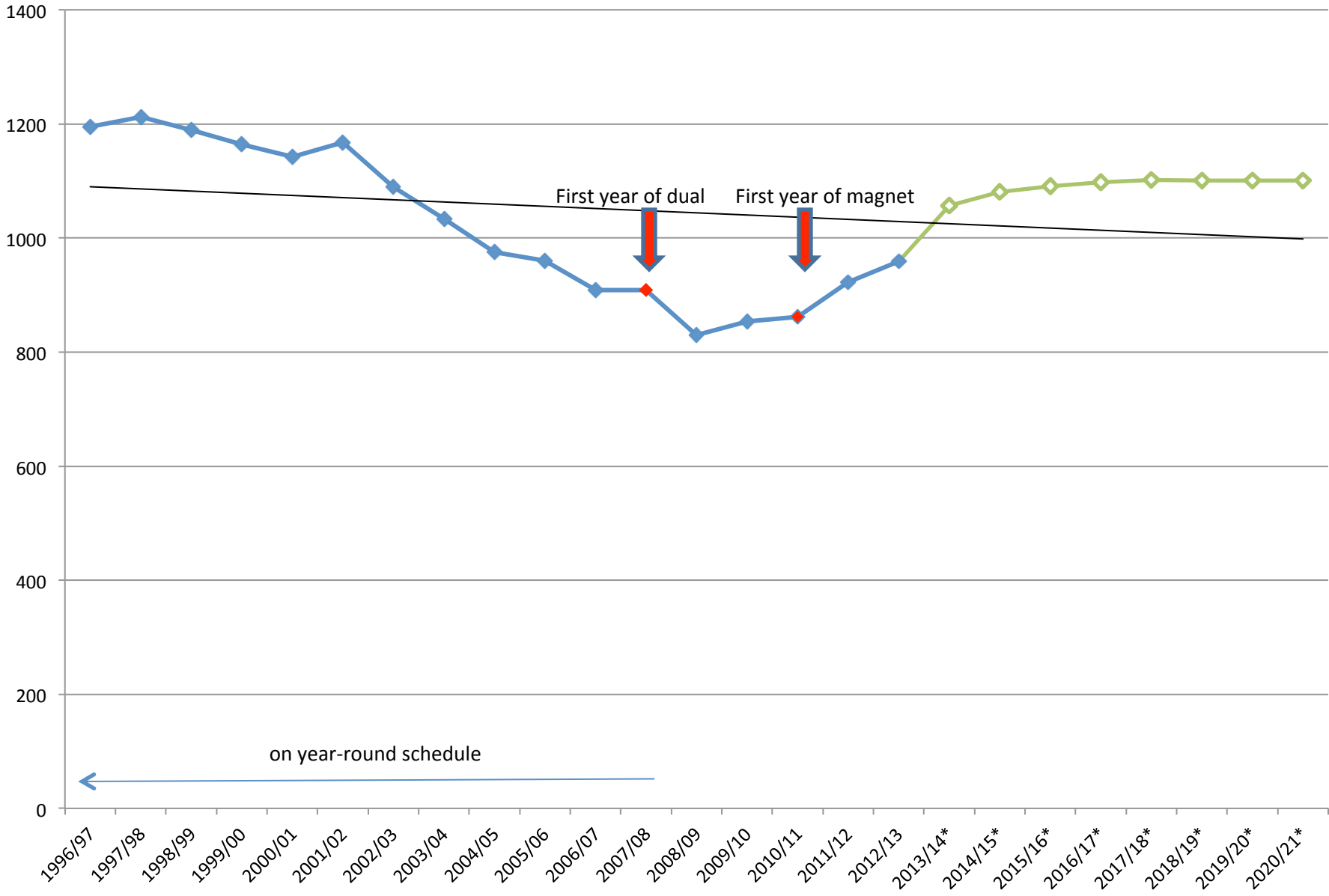
Franklin



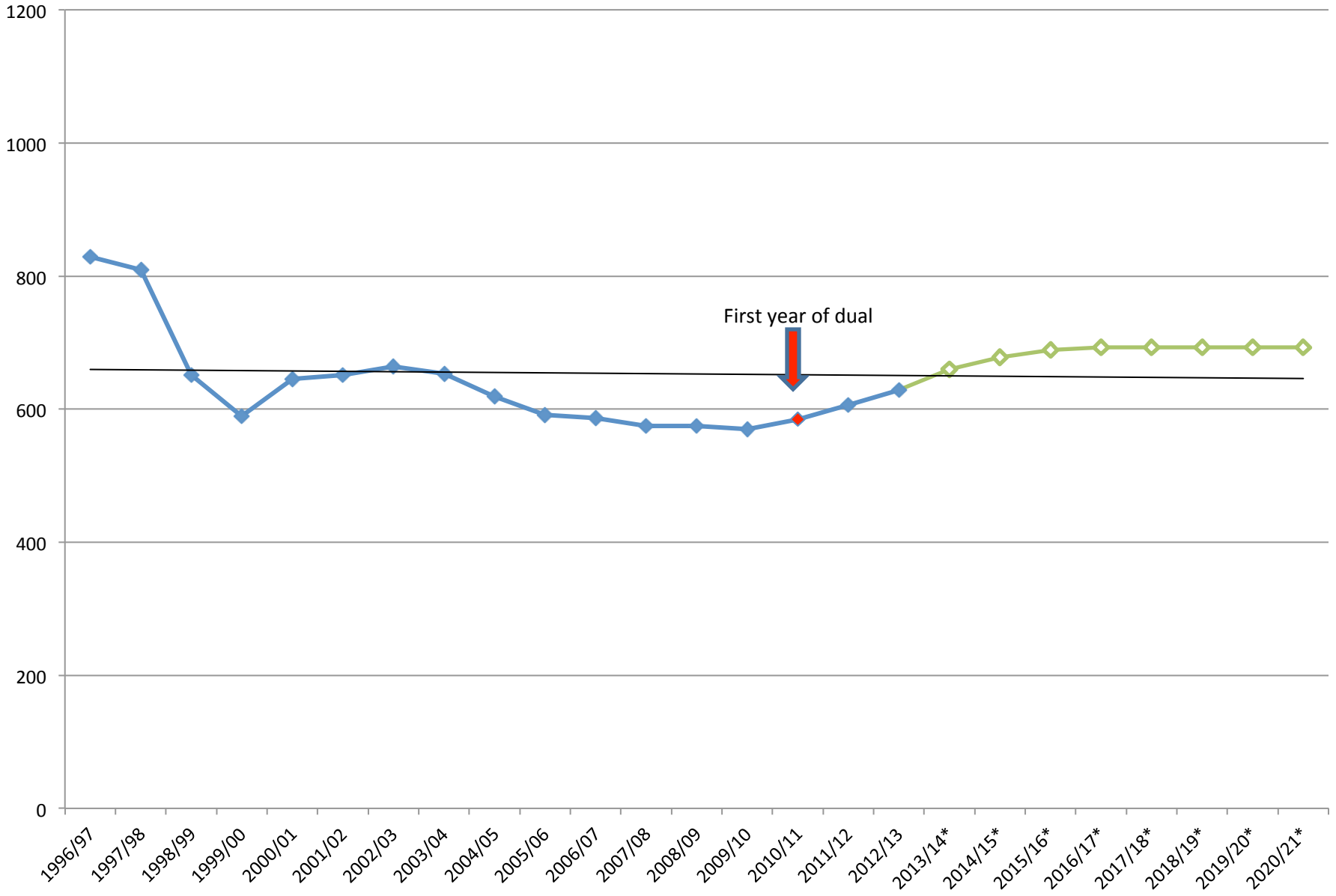
Jefferson



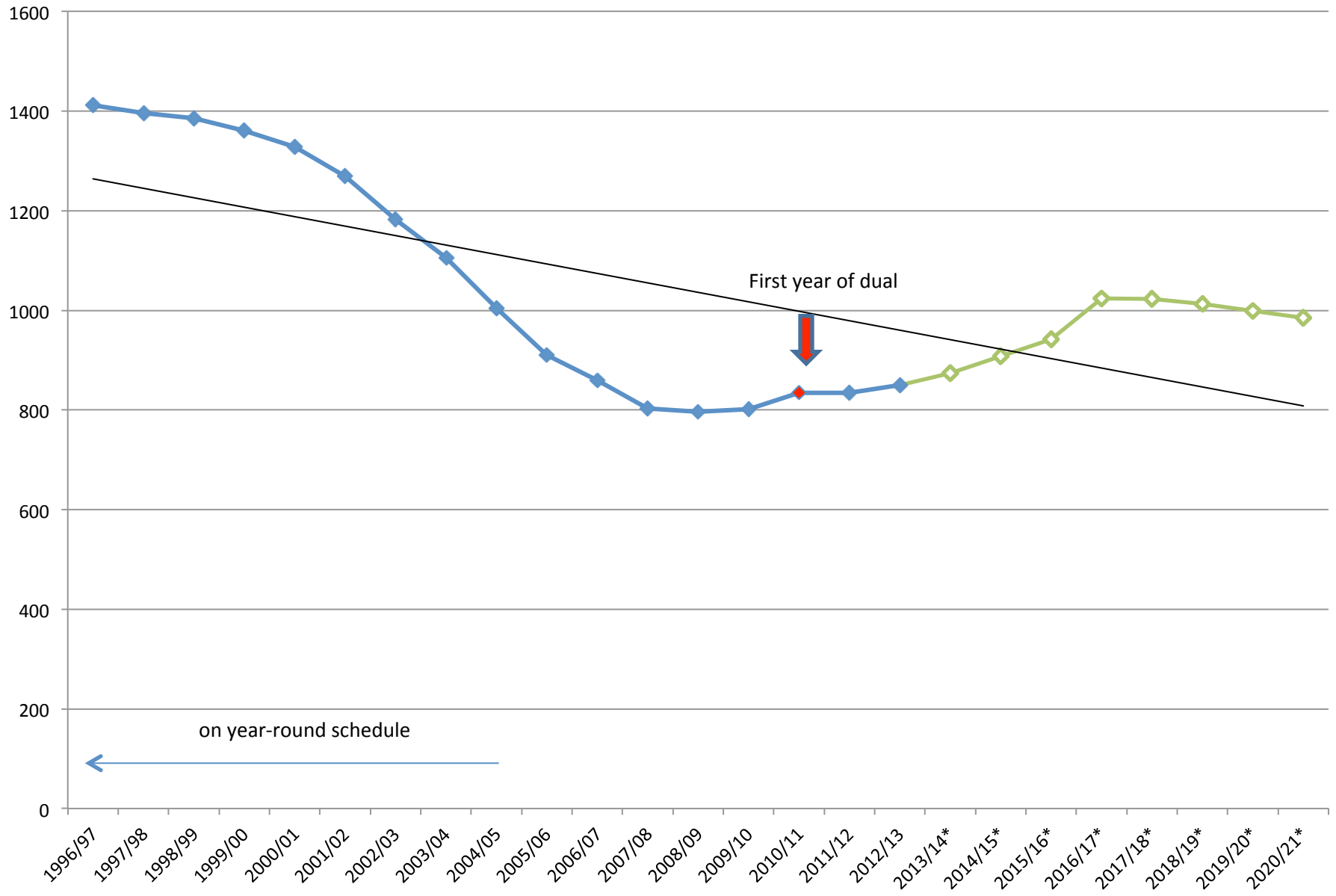
Keppel



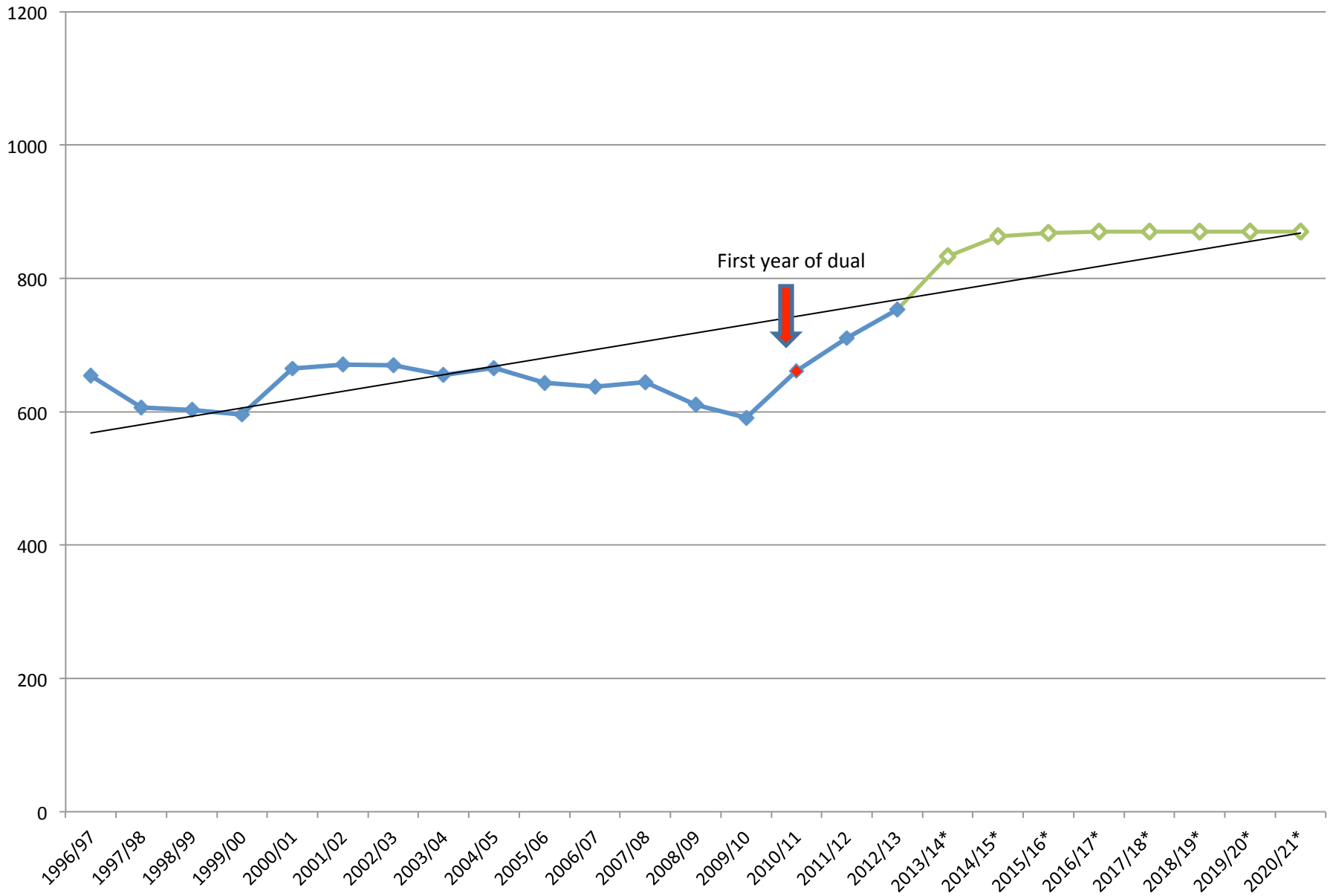
Monte Vista



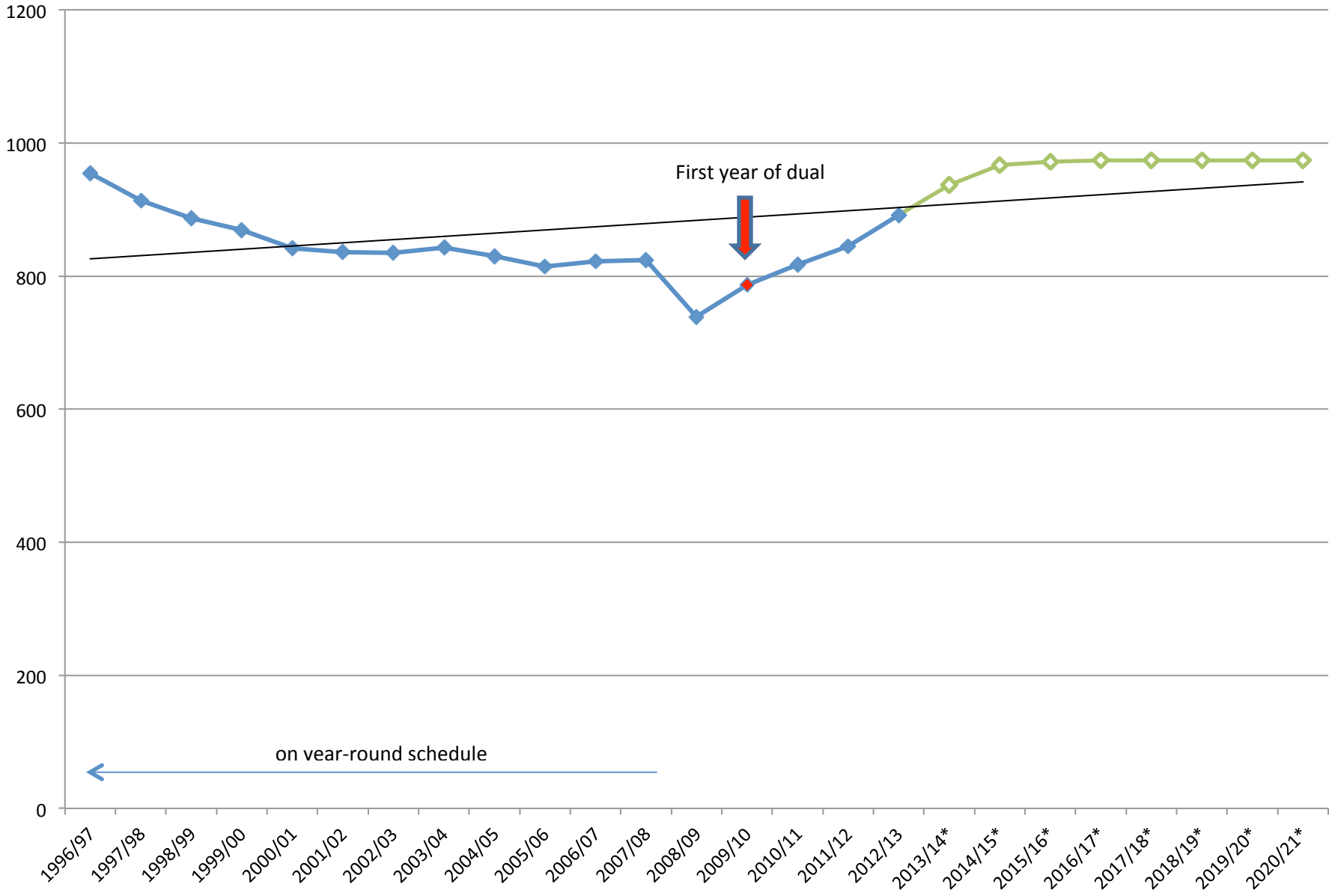
Muir



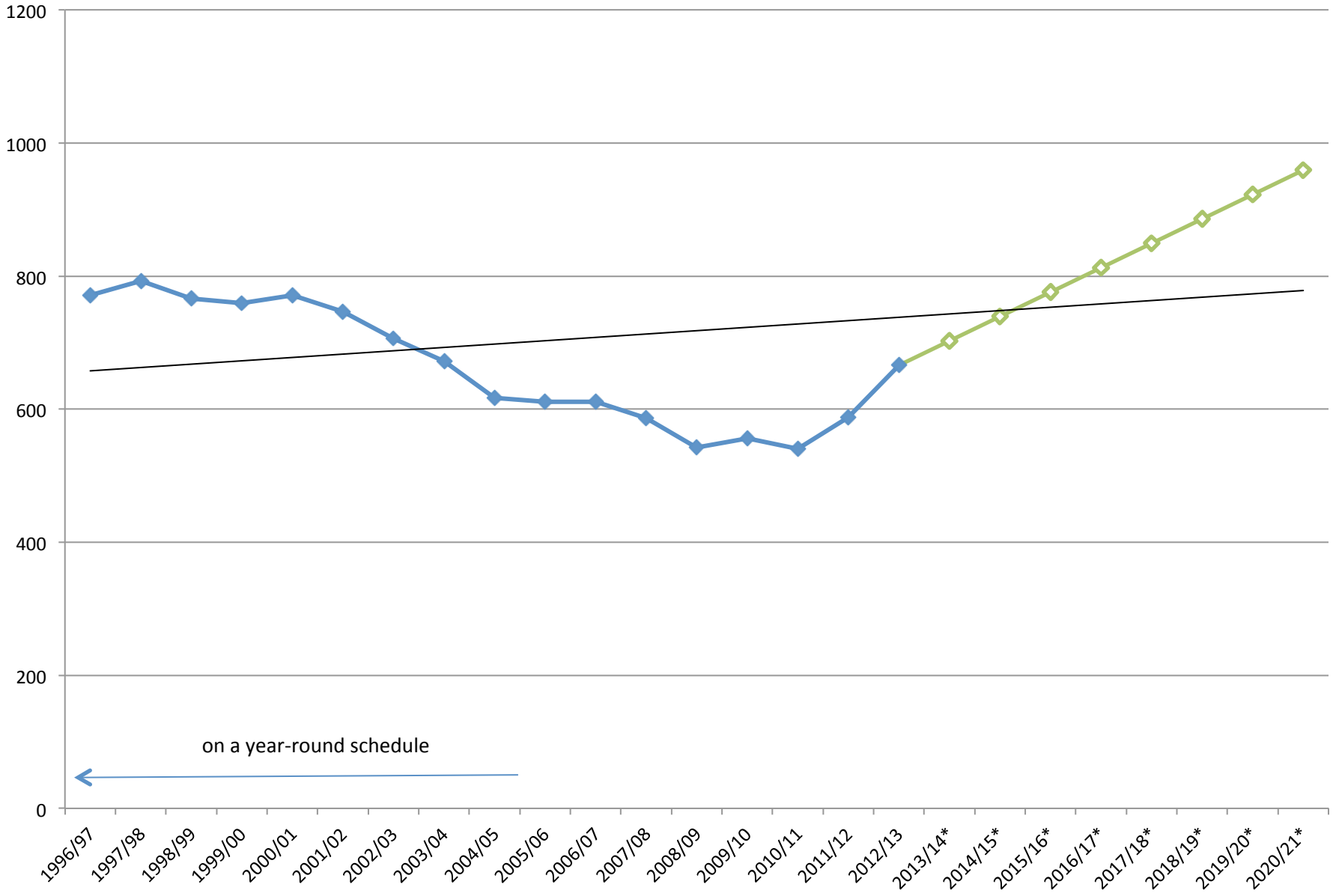
Verdugo Woodlands



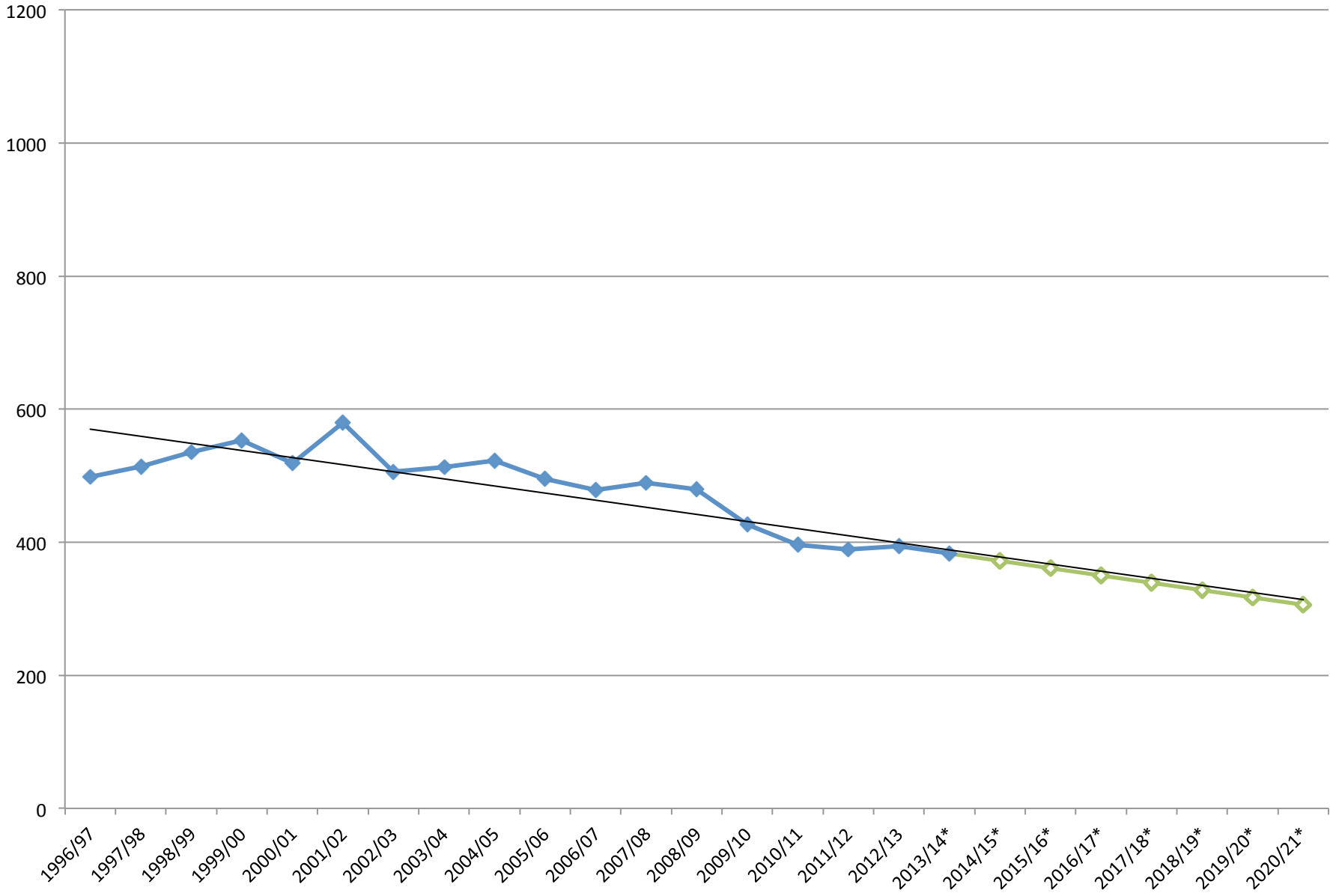
White



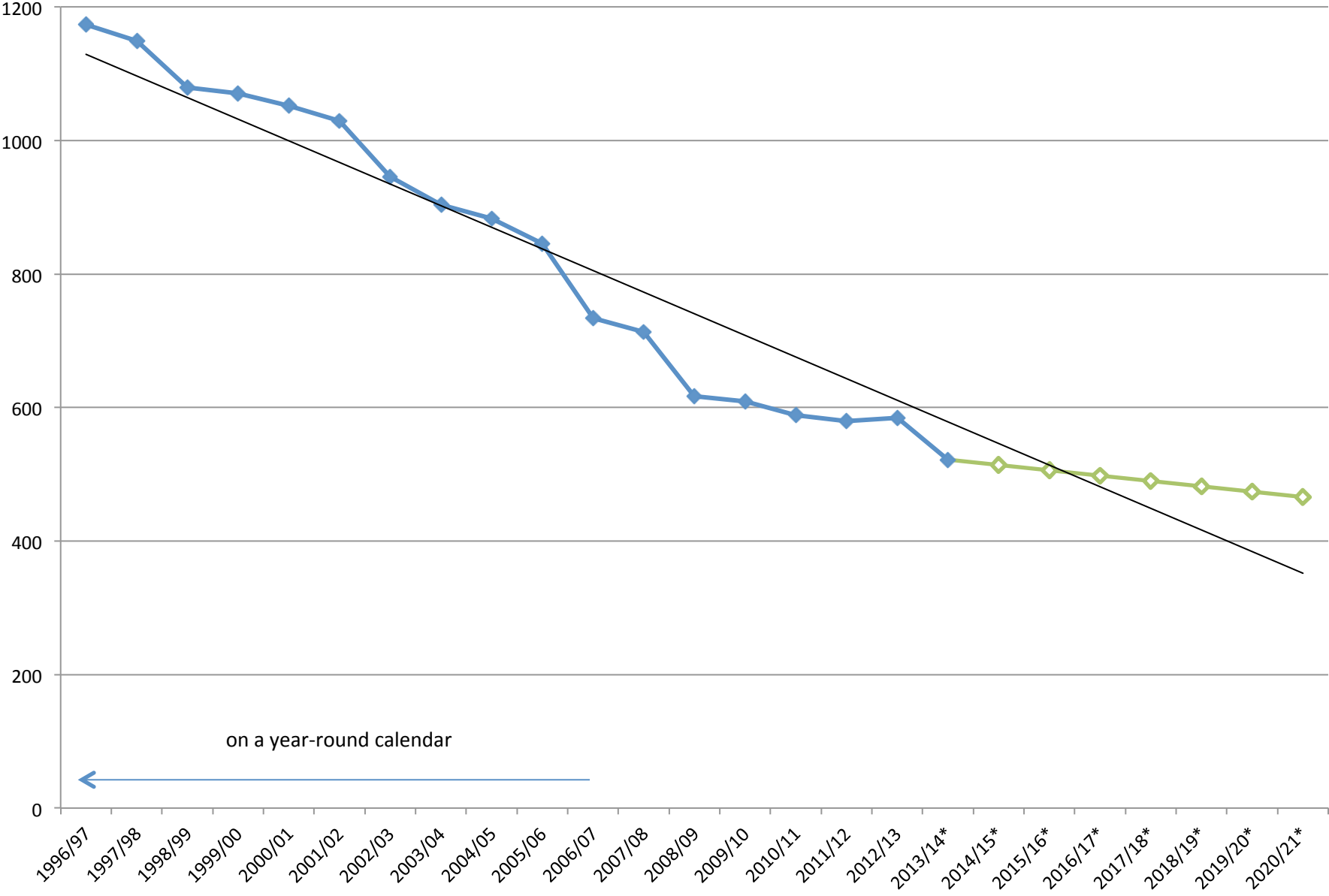
Balboa



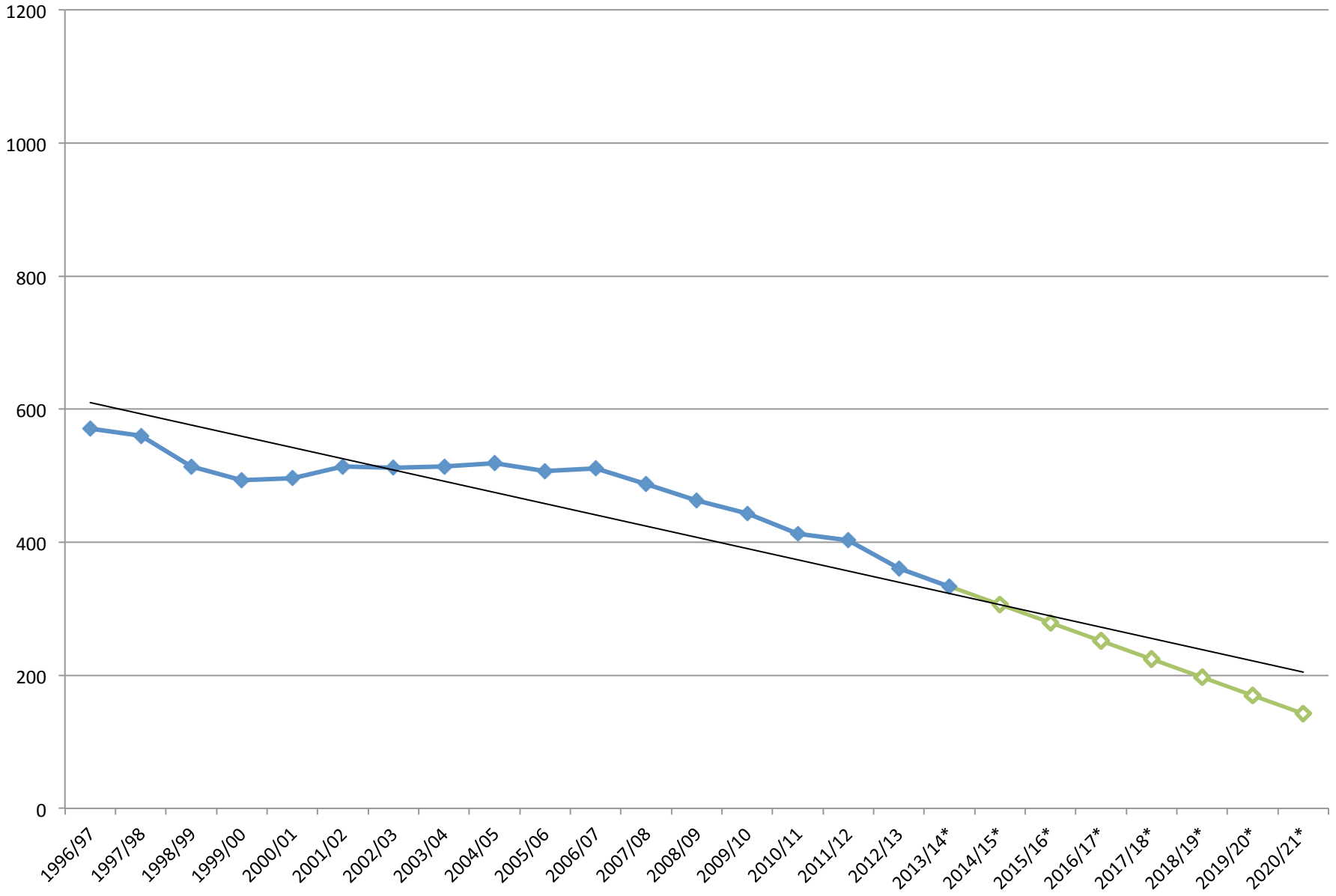
Cerritos



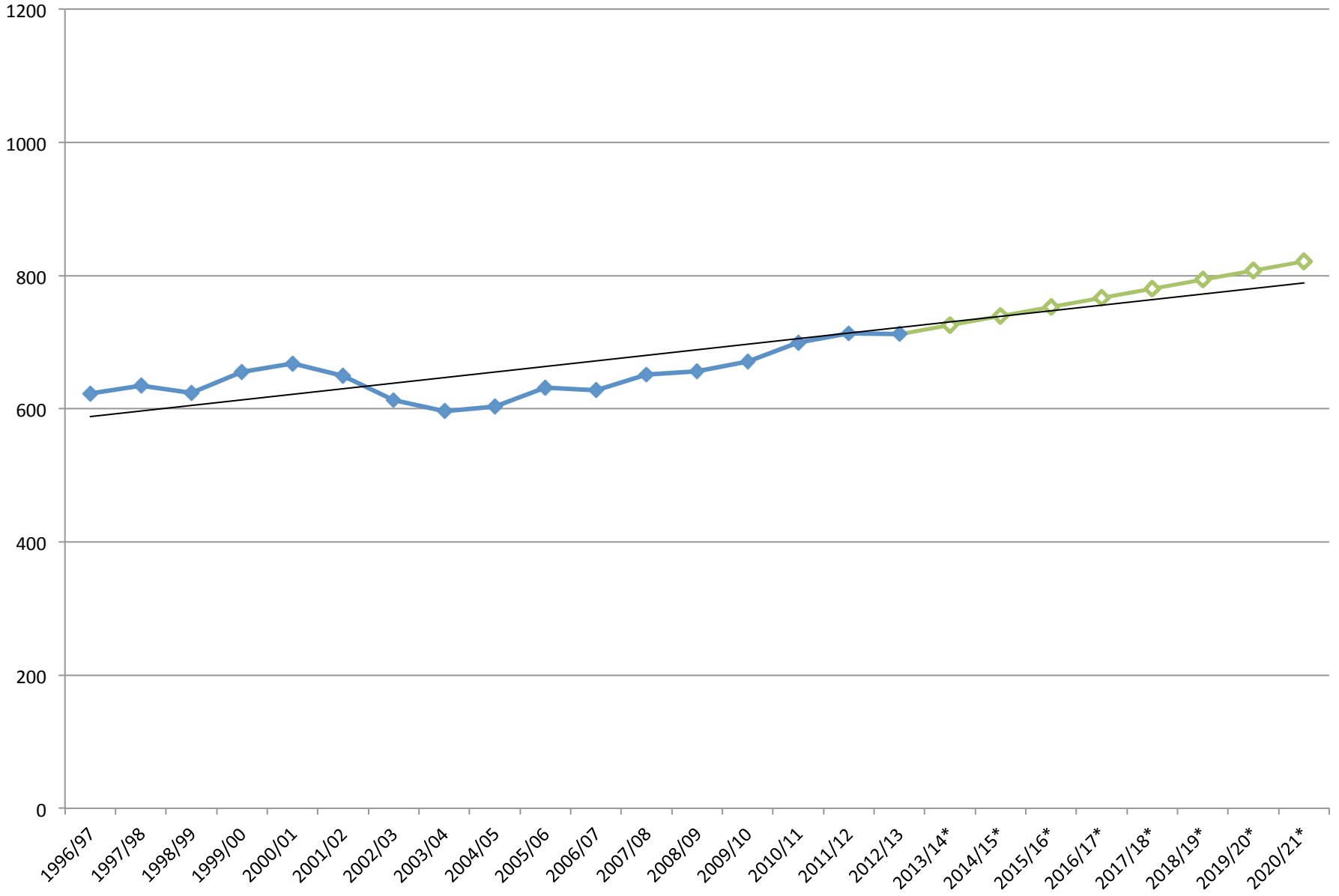
Columbus



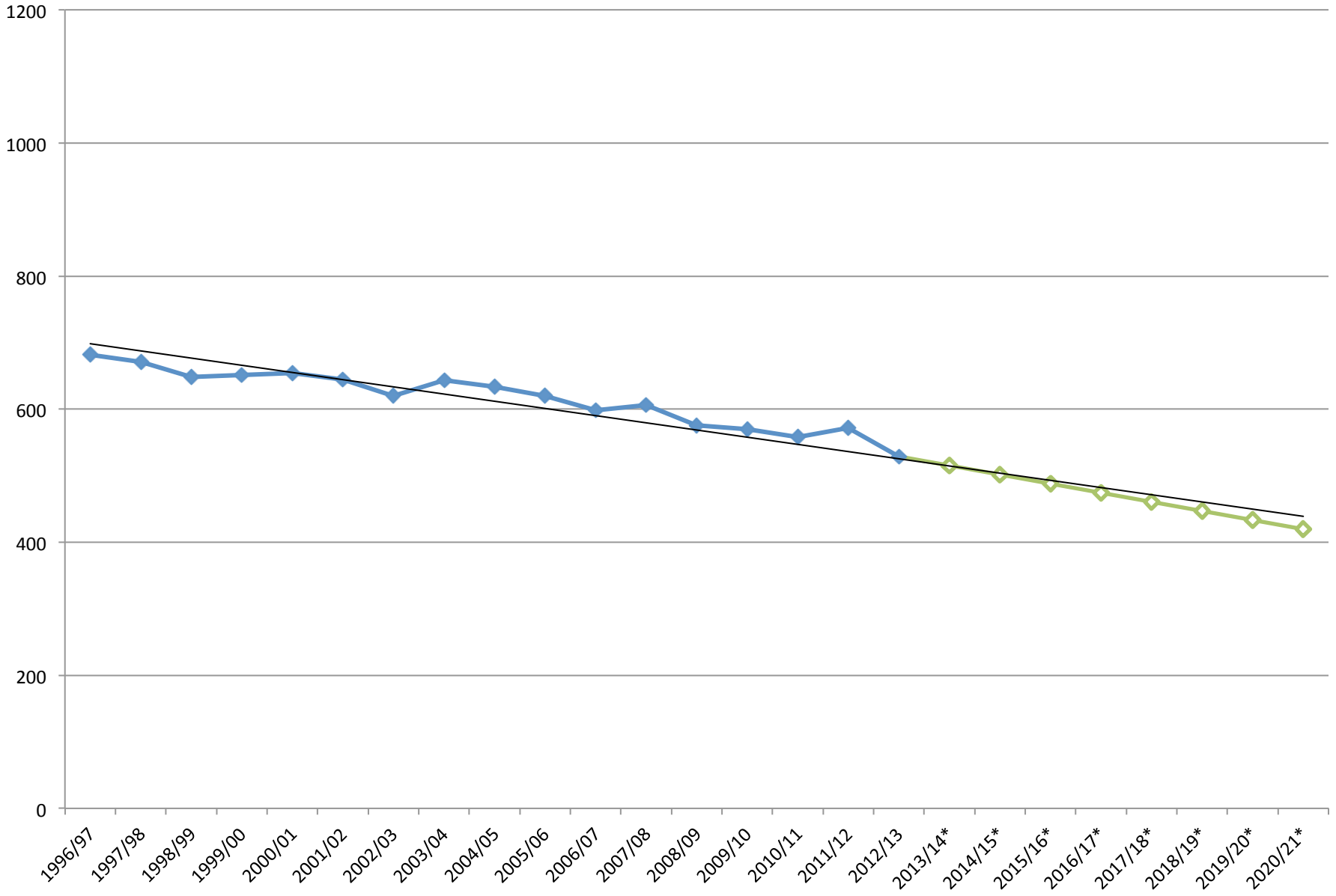
Dunsmore



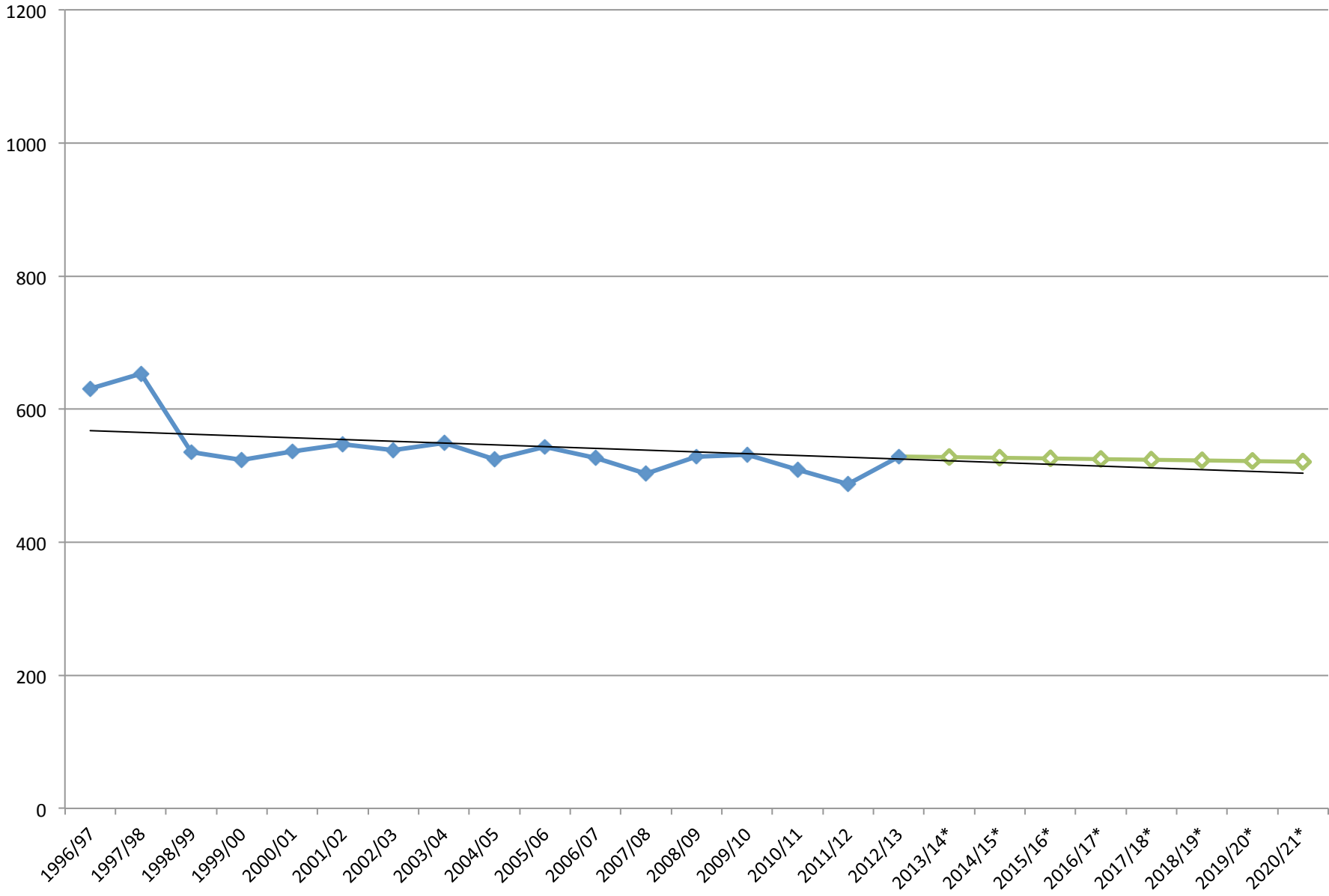
Fremont



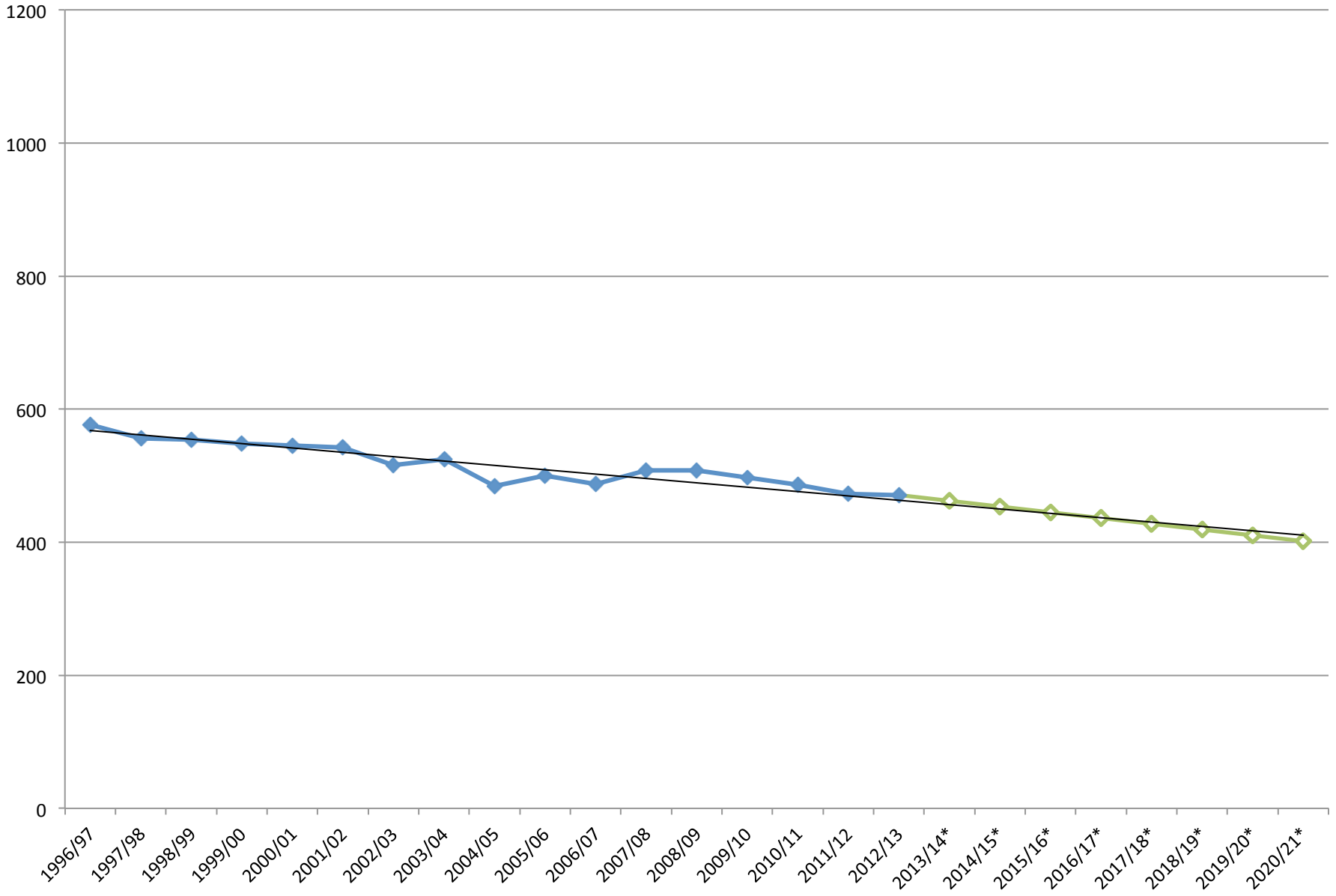
Glenoaks



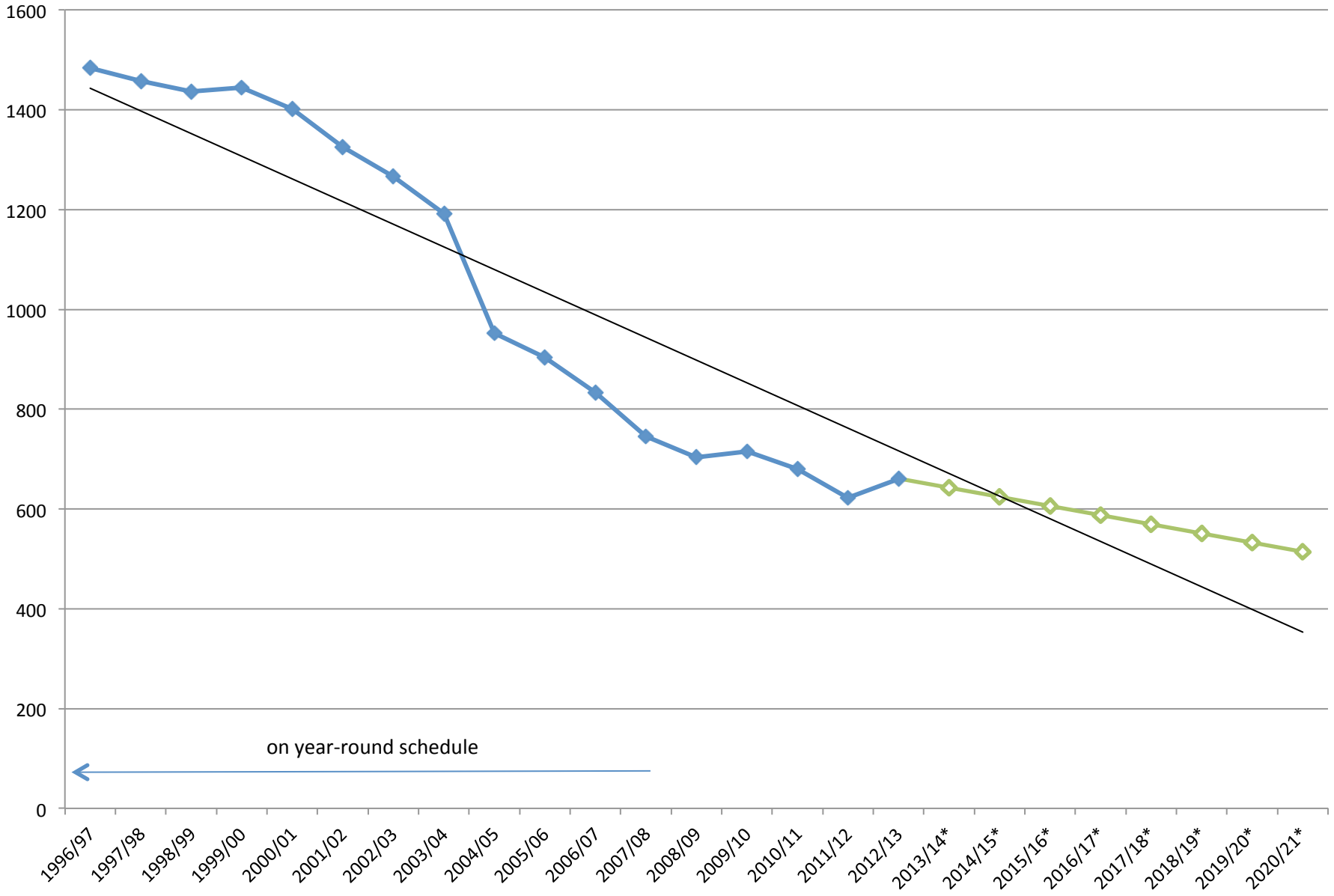
La Crescenta



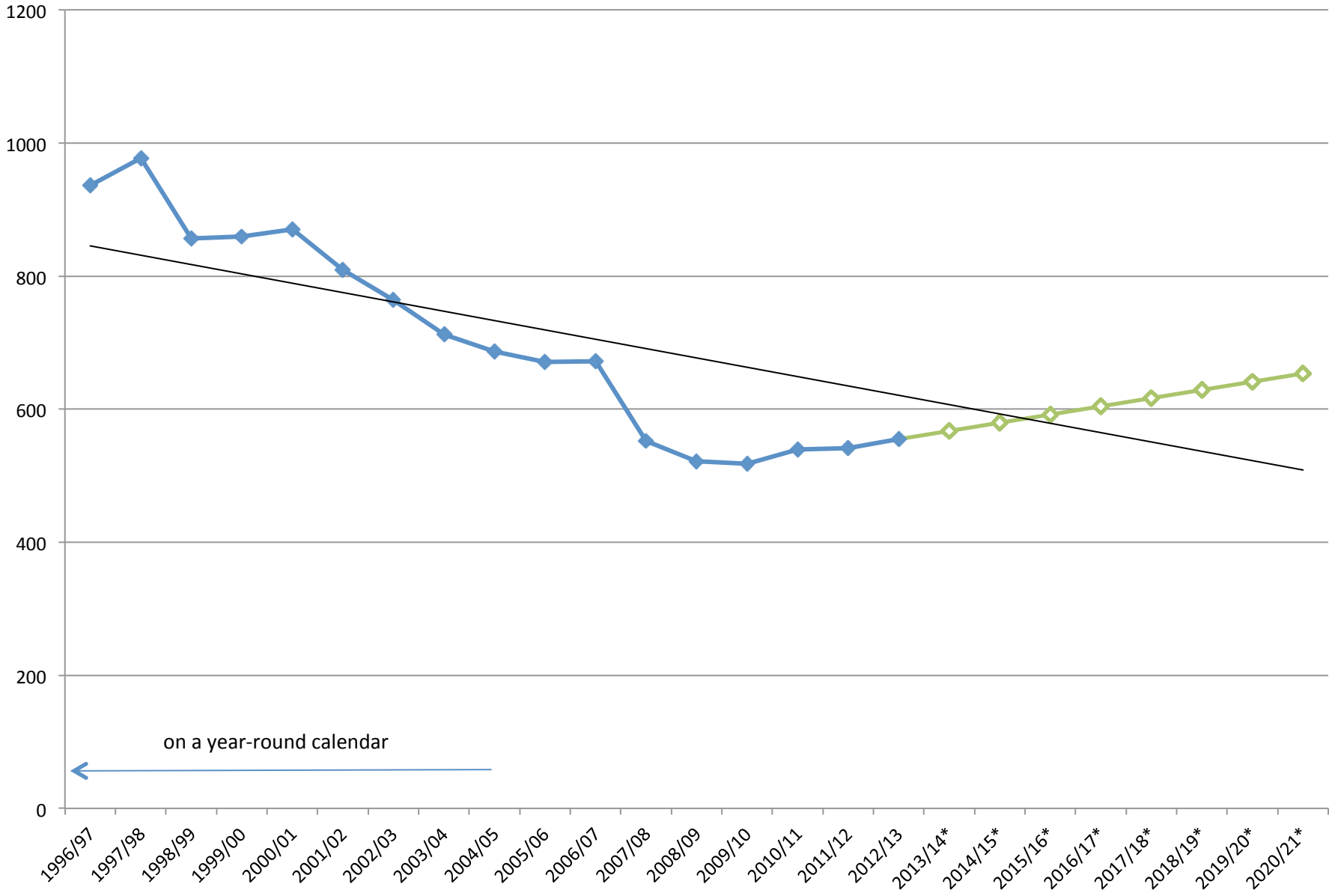
Lincoln



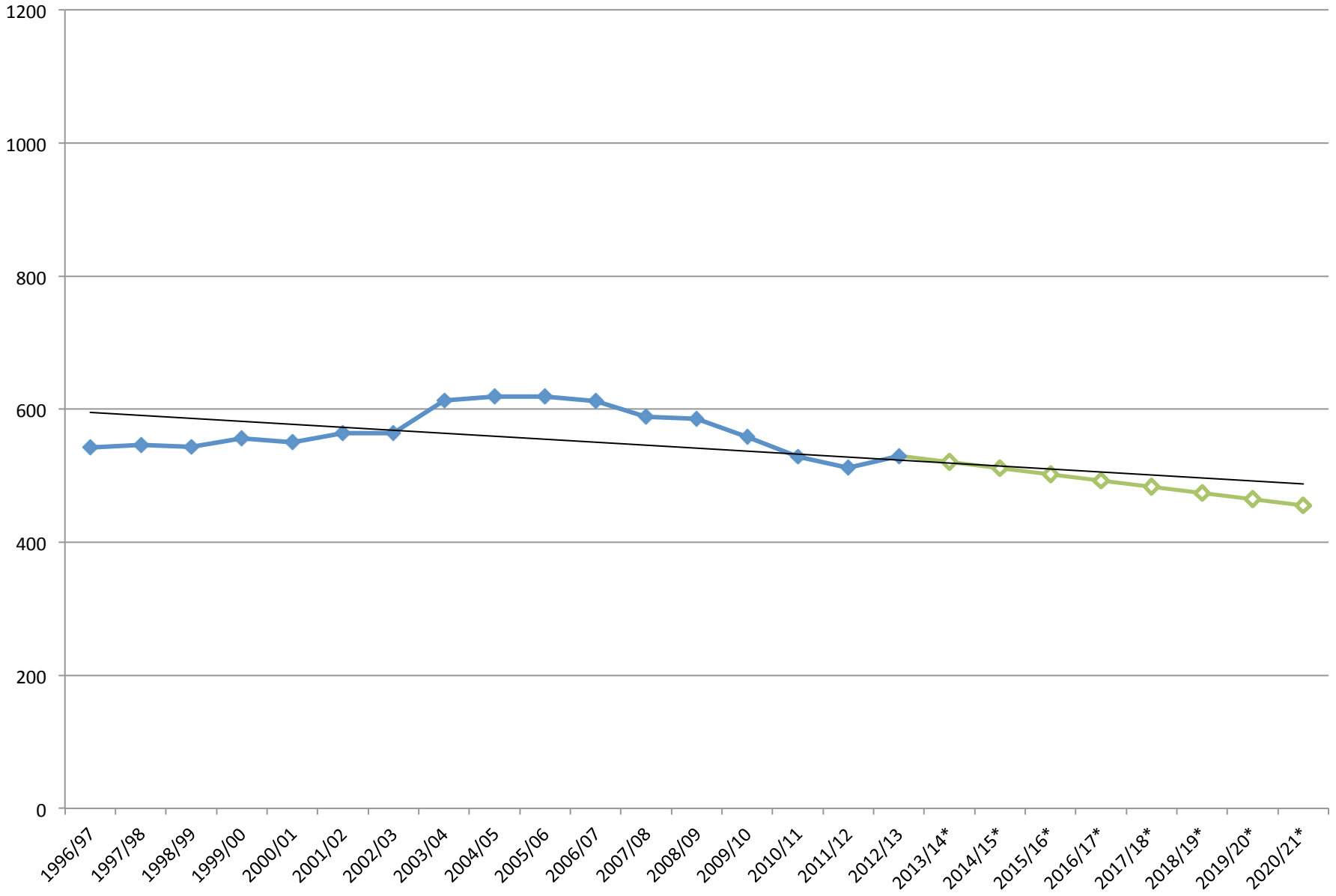
Mann



Marshall



Mountain Ave



Valley View

