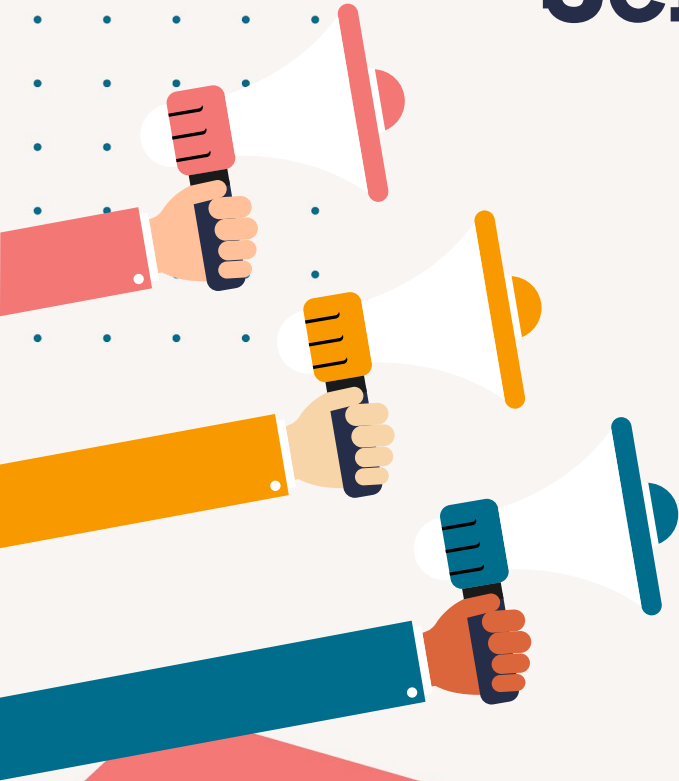


ELPAC Parent Info Session

January 13, 2020
Bonnie Cervantes, GUSD ELPAC Coordinator



Screenkeeping



- Mute when you're not speaking
- Meeting is recorded
- Chat feature will be captured
- Jot down or put questions in the chat; will be answered at the end
- bcervantes@gusd.net

Today's Agenda



01 OVERVIEW
Informational video from ELPAC

02 WHAT IS ELPAC?
Purpose and Goals

03 TEST ADMINISTRATION
How is the test given?

04 HOW CAN I HELP MY CHILD?
Test Preparation

05 QUESTIONS & ANSWERS



ELPAC OVERVIEW VIDEO

WHAT IS ELPAC?

- English Language Proficiency Assessments for California
- Two types; two purposes
 - Initial
 - Summative
- Four domains
 - Listening
 - Speaking
 - Reading
 - Writing



INITIAL ELPAC

- Given only once in a student's school career
- Used to identify students who need support in English Language acquisition
- Administered within 30 days of enrollment in CA school, July-June
- **Three possible outcomes**
 - Initial Fluent English Proficient (IFEP)
 - Novice English Learner
 - Intermediate English Learner



SUMMATIVE ELPAC

- Required to be given every spring to all EL students
- Used to monitor student progress in language acquisition
- Required criteria for reclassification per CDE
- Window to administer is Feb 1-May 31 each year
- Overall score of 4 makes them a candidate for reclassification



ADMINISTRATION OF ELPAC



- Initial - all 1:1
- Summative
 - K-12 Speaking Domain: 1:1
 - K-2 Reading, Writing, Listening Domain: 1:1
 - 3-12 Reading, Writing, Listening Domains: group proctoring

ADMINISTRATION OF ELPAC

- Teachers and Teacher Specialists administer during class
- District testers for 1:1 domains
- All trained and calibrated to ensure equitable administration of test



HOW TO ACCESS YOUR STUDENT'S SCORES FOR ELPAC OR CAASPP:

- 1 - Log into your Parent Connection account. If you have any trouble accessing your account, contact your child's school site.
- 2 - Once you have logged in, be sure to double-click on the line that has your child(ren) name.
- 3 - Once the screen has expanded, look on the left-hand side of the screen for "Testing". Click on that so it expands and you will see "California Electronic Score Reports" with CAASPP and ELPAC scores from previous years.
- 4 - Click on the particular score report you want to see, and it will download a PDF of the score report.



IN-PERSON OR REMOTE?

- Tests are designed to be delivered in person
- Waiting for further guidance and clarification from CDE
- Fall administration practices - COVID-19 safe



WHAT CAN I DO AT HOME TO HELP MY CHILD PREPARE?



- Read together
- Tell them a story and ask them to re-tell it to you
- Ask them to read to you
- Look at a picture and ask them to describe what's going on in the picture
- Listen to something together and have them tell you what it was about
- [Domain Information Sheets](#)
- <https://elpac.startingsmarter.org/>

■ **Testing Preparation**

- **Go to www.elpac.org**
- **Click on [Practice and Training Tests](#)**
- **Click on [Student Interface Practice and Training Tests](#)**
- **Sign in as Guest**
- **Choose appropriate grade level**
- **Practice as many times as you like!**



**Help for LEA
ELPAC
Coordinators—**
Hours: M-F, 7 a.m.
to 5 p.m. PT

Call 800-955-2954
Email caltac@ets.org
Online [Chat now](#)

Test Operations Management
System (TOMS)

Test Administrator Interface for
All Online Tests

Data Entry Interface (DEI)

California Educator
Reporting System (CERS)

Practice & Training Tests

Secure Browsers

Technology Readiness Checker
for Students

Smarter Balanced Digital Library

The ELPAC Website

The English Language Proficiency Assessments for California (ELPAC) website serves as the portal for resources that a local educational agency (LEA) will need to administer the ELPAC.

News and Tips for the ELPAC Administration

1. The Summative ELPAC *Directions for Administration (DFAs)* are now available for download in TOMS. Select the **[Resources]** button then select *Summative ELPAC DFAs* from the *Available Materials* list and download the *DFA(s)* that match the assigned form number.
2. The *Summative ELPAC Online Test Administration Manual (PDF)*, *Forms Assignments*, and *Summative ELPAC Estimated Testing Time* web pages are now available!
3. Form assignments for the 2019–20 Summative ELPAC administration are now available on the *ELPAC Forms Assignments* web page. Use the lookup tool to search the LEA and the form number to which the LEA has been assigned. Secure DFAs that correspond to these form assignments will be available for download in TOMS.
4. The next webcast, CAASPP and ELPAC Pretest *Webcast*, is scheduled for Friday, January 31, 2020, from 9 a.m. to 4 p.m.
5. Starting with the 2019–20 administration, Pre-ID labels will be provided for students in kindergarten through grade two for their Summative ELPAC Writing domain Answer Books at **no cost**. LEAs do not need to request or order these Pre-ID labels; they will be sent to the LEAs to return paper-scorable materials.
6. Registration has opened for the 2019–20 CAASPP and ELPAC Pretest Workshop. Access the workshop registration and dates on the *Training Dates* page.
7. The *Practice and Training Test Resources* web page contains links to the training tests and Training Test Directions for Administration (DFAs) that will help LEAs, test examiners, and students become familiar with the new computer-based platform for the Summative ELPAC that launches in February 2020.
8. To help introduce the new Alternate ELPAC, California is providing *The English Language Proficiency Assessments for California and Alternate ELPAC Communications Toolkit* web page. This toolkit can be used by LEAs in their outreach efforts to parents and guardians.
9. The new *ELPAC Student Accessibility Resources* web page provides a wide range of supports to better serve students with specific learning needs that may require accessibility resources on assessments.

Online Practice and Training Tests



**Help for LEA
ELPAC
Coordinators—**
Hours: M-F, 7 a.m.
to 5 p.m. PT

Call 800-955-2954
Email caltac@ets.org
Online Chat now

Test Operations Management
System (TOMS)

Test Administrator Interface for
All Online Tests

Data Entry Interface (DEI)

California Educator
Reporting System (CERS)

Practice & Training Tests

Secure Browsers

Technology Readiness Checker
for Students

Smarter Balanced Digital Library

Administration of Practice and Training Tests is optimized in supported versions of Chrome, Firefox, and Safari web browsers. Use of the Microsoft Edge and Internet Explorer web browsers is not recommended.

To access the online Practice and Training Tests, please select one of these buttons.



[Test Administrator and Test
Examiner Practice and
Training Site](#)

If you are a test examiner,
select this button to access
and administer the online
Practice and Training Tests.



[Test Examiner Resources for
Practice and Training Tests](#)

If you are a test examiner,
select this button to access
resources, including
*Directions for Administration
(DFAs)* and Scoring Guides.
Test examiners will need to
use the computer-based
ELPAC DFAs and follow the
instructions when
administering the online
practice and training tests.



[Student Interface Practice
and Training Tests](#)

If you are a student, select
this button to access the
Practice and Training Tests
for the online tests.



Please Sign In

ON

Guest User

Toggle to sign in as yourself

ON

Guest Session

Toggle to join an active session

Run Diagnostics

Browser: Chrome v79

Welcome to the Practice and Training Test site. You can use this site to take practice and training tests. Some questions require you to select one answer; others require you to type a short answer, draw a picture, or complete another type of open-ended task.

Your Tests

Select the test you need to take.

Grade:

Please select a grade:

- KG
- 1
- 2
- 3
- 4
- 5
- 6
- 7
- 8
- 9

Your Tests

Select the test you need to take.

Grade:

English Language Proficiency Assessments (ELPAC) Practice Test

→ Start ELPAC Grade 2 Listening Practice Test
This is opportunity 1 of 99

→ Start ELPAC Grade 2 Reading Practice Test
This is opportunity 1 of 99

→ Start ELPAC Grade 2 Speaking Practice Test
This is opportunity 1 of 99

English Language Proficiency Assessments (ELPAC) Training Test

→ Start ELPAC Grade 2 Listening Training Test
This is opportunity 1 of 99

→ Start ELPAC Grade 2 Reading Training Test
This is opportunity 1 of 99

→ Start ELPAC Grade 2 Speaking Training Test
This is opportunity 1 of 99

Be Sure to
Choose
ELPAC
Tests!



PRACTICE TESTS

What questions do
you have?



Contact info

- Bonnie Cervantes
- bcervantes@gusd.net

