



Glendale Unified School District

DISTRICT
ENGLISH
LEARNER
ADVISORY
COMMITTEE



October 14, 2020

Welcome!

We're so glad you're here.



English Learner District Leads:

Ms. Bonnie Cervantes
Coordinator of Categorical Programs

Ms. Sandra Espinoza
English/ELD Teacher Specialist

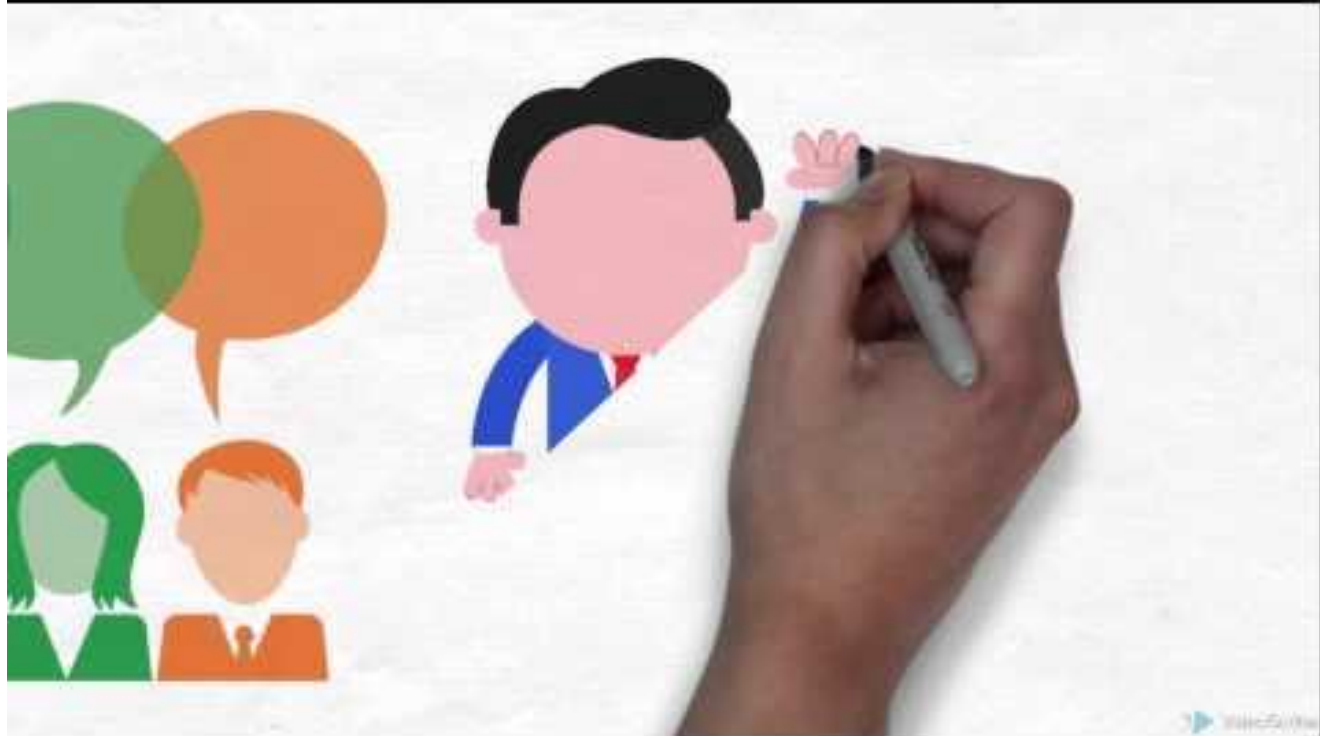
Your School's Teacher Specialist





DELAC:

A district-level advisory committee convened to give school district input on English Learner Programs





DELAC Officer Responsibilities:

Chairperson

- Helps develop agenda
- Facilitate meeting

Secretary

- Takes minutes & emails them to District



DELAC:

Responsibilities are to advise the district governing board on...

- District English Learner Master Plan
- District-wide needs assessment
- A plan to ensure compliance with teacher or instructional aide requirements
- Reclassification procedures
- Required written notifications to parents
- Local Control and Accountability Plan
- Establishment of EL program, goals, and objectives

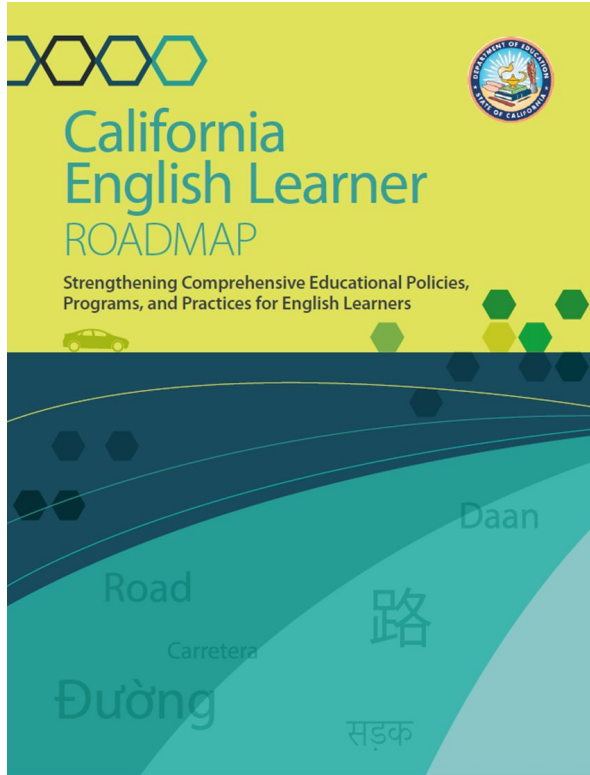




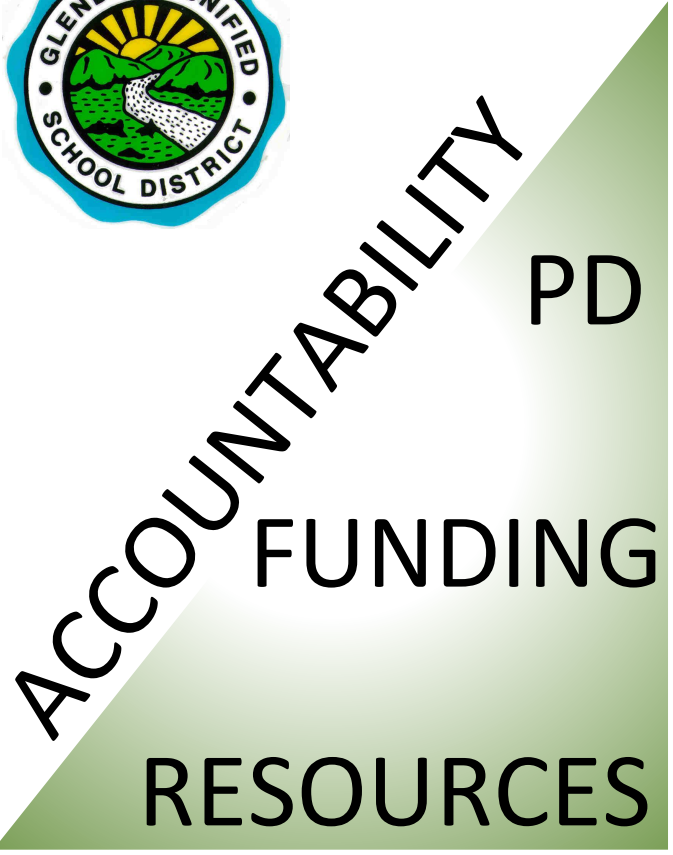
English Learner Program Overview

English Learner Roadmap Priorities

Adopted by CA State Board of Education July 12, 2017



- Assets-oriented & Needs-responsive Schools
- Intellectual Quality of Instruction & Meaningful Access
- Systems Conditions that Support Effectiveness
- Alignment & Articulation Within and Across Systems



EL Services



Obligations



Identification



Instructional Program



Exiting Services

GUSD ENGLISH LEARNER PROGRAM

Purpose

- Support students as they acquire both conversational and academic English language proficiency
- Honor heritage language and culture
 - Dual Immersion
 - World Language Programs
- Ensure student success in core academic classes
- Ensure student competitiveness in college admissions and world employment markets



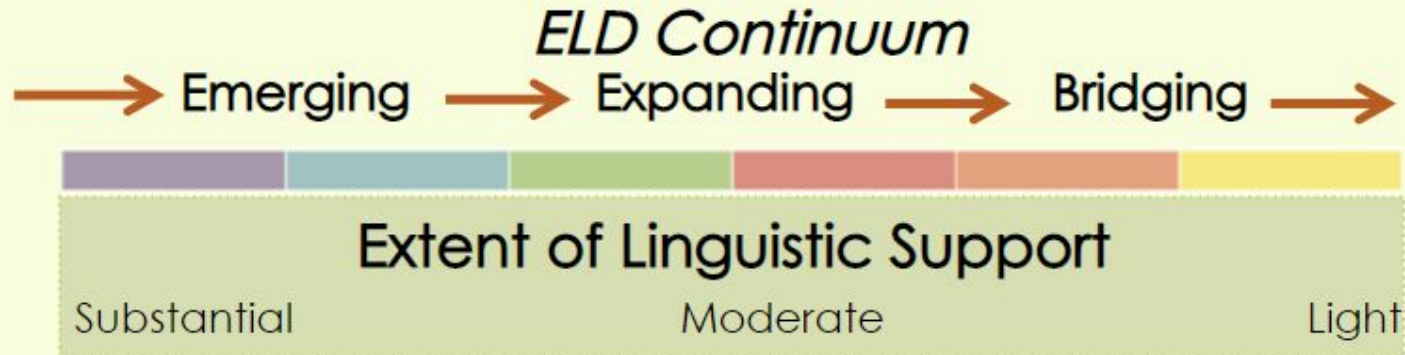
GUSD ENGLISH LEARNER PROGRAM

Identification

- Home Language Survey
 - To be completed only once in a student's career
- Welcome Center
- Initial ELPAC
 - Novice-EL Program
 - Intermediate-EL Program
 - Initially Fluent-No EL Program
- Identified EL until all Reclassification Criteria are met



ELD Proficiency Levels



**Use appropriate scaffolding strategies
for each level of the ELD continuum
to help English learners**





GUSD ENGLISH LEARNER PROGRAM

Instruction

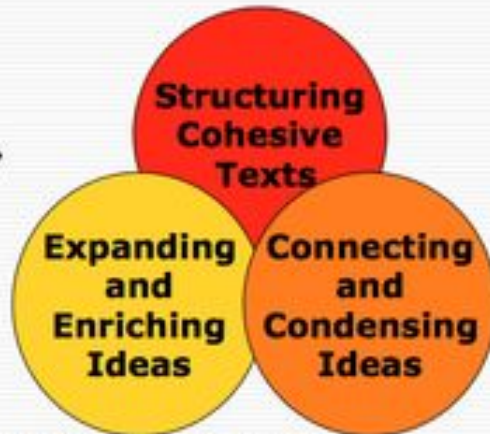
- Designated ELD Time
 - Based on English Language Development Standards
 - Emphasis on Academic Language
 - Benchmark (K-5)
 - Springboard (6-12)
- Integrated ELD Time
 - Throughout the day and across all disciplines
 - Teachers use strategies to support language acquisition as well as content knowledge

California ELD Standards

**Part I:
Interacting in Meaningful Ways**



**Part II: Learning About
How English Works**



ELD + Distance Learning

ENGLISH LANGUAGE DEVELOPMENT

Develop students'
English proficiency targeting
ELD Standards

Designated ELD Instruction



Provide meaningful access
to grade-level academic
content instruction

Integrated ELD Instruction





Synchronous ELD options

- “Live” virtual lessons
 - e.g. Google Meet & Zoom
- Phone calls
- Small group lessons
 - by proficiency level
 - with scaffolds
- Teacher feedback & support as needed

Asynchronous ELD options

- Previously-recorded lessons & videos
- Phone & text messages
- Independent ELD assignments or projects
 - e.g., Google Classroom
- Paper/pencil activities
- Reading logs & journals



Unit 1 English La...

EL Proficiency Levels

- Emerging
- Expanding
- Bridging

How can our *students* demonstrate what they have learned?



Teachers might ask students to **record & submit oral presentations or responses** using:

- [Flipgrid](#)
- [Screencastify](#)
- Use **Google Docs** to allow opportunities for peer collaboration

Helpful Apps and Websites:

How can we expose students to vocabulary in multiple ways?

- Use **cognates** to link native language + new learning
 - Cognate [guide](#) provides a helpful list of cognates in Spanish and English
- **Google Translate**
- **Microsoft Translator**

Offering Visual Cues & Multimedia

- Use **Google Images**
- Use **Closed Captioning when viewing videos**





GUSD ENGLISH LEARNER PROGRAM

Assessment

- Initial ELPAC
 - Taken only once in student's career
- Summative ELPAC
 - Taken annually by all students identified EL
 - Based on English Language Development standards
 - Monitors language acquisition progress of our ELs
 - Computer-based
- CAASPP
 - Taken annually by all CA students in grades 3-8 and 11
 - Monitors content knowledge and skills acquisition
 - Computer-based
- BCE
 - Gr 11-12 Optional Bilingual Competency Exam

GUSD ENGLISH LEARNER PROGRAM

Reclassification: All 4 criteria must be met

- Summative ELPAC
 - Overall score of 4 (new for 19-20)
- Comparison of Basic Skills
 - CAASPP
 - i-Ready
 - MAP Growth Assessment
 - SOLOM
- Teacher Feedback
 - Grades
 - ELD Descriptors
- Parental Input & Consent
 - Consultation or Signature





Reclassified Fluent English Proficient

Progress Monitoring

- RFEP Monitor Progress for 4 years
- Recent data analysis (i-Ready) shows reclassified students show higher growth performance in Reading and Math than their non-EL peers

A blurred background of a meeting with a table in the foreground holding a notebook and a pen. The scene is dimly lit, with a focus on the table and the objects on it. The background shows several people, some of whom appear to be in a meeting or discussion. The overall atmosphere is professional and focused.

DELAC Elections

OTHER TOPICS FROM THE FLOOR





THANK YOU!

Bonnie Cervantes-Coordinator
bcervantes @gusd.net

