

GENERAL STRUCTURAL NOTES

DESIGN CRITERIA:

BUILDING CODE: 2016 CALIFORNIA BUILDING CODE, (CBC)

WIND:
 V (3-SECOND GUST SPEED) = 115 MPH
 RISK CATEGORY = III
 EXPOSURE = C

SEISMIC:
 IMPORTANCE FACTOR, IE = 1.2
 MAPPED SPECTRAL RESPONSE ACCELERATIONS: S₀ = 2.742, S₁ = 1.004
 SITE CLASS = D
 SPECTRAL RESPONSE COEFFICIENTS: SDS = 1.020, SD1 = 1.004
 SEISMIC DESIGN CATEGORY = D

NOTES TO CONTRACTOR:

PROJECT SAFETY IS THE RESPONSIBILITY OF THE CONTRACTOR OR PERSONS IN CHARGE OF THE DAY-TO-DAY CONSTRUCTION. COMPLY WITH ALL OSHA REQUIREMENTS. PROVIDE TEMPORARY BRACING, SHORING, GUYING OR OTHER MEANS TO AVOID EXCESSIVE STRESSES AND TO HOLD STRUCTURAL ELEMENTS IN PLACE DURING ERECTION.

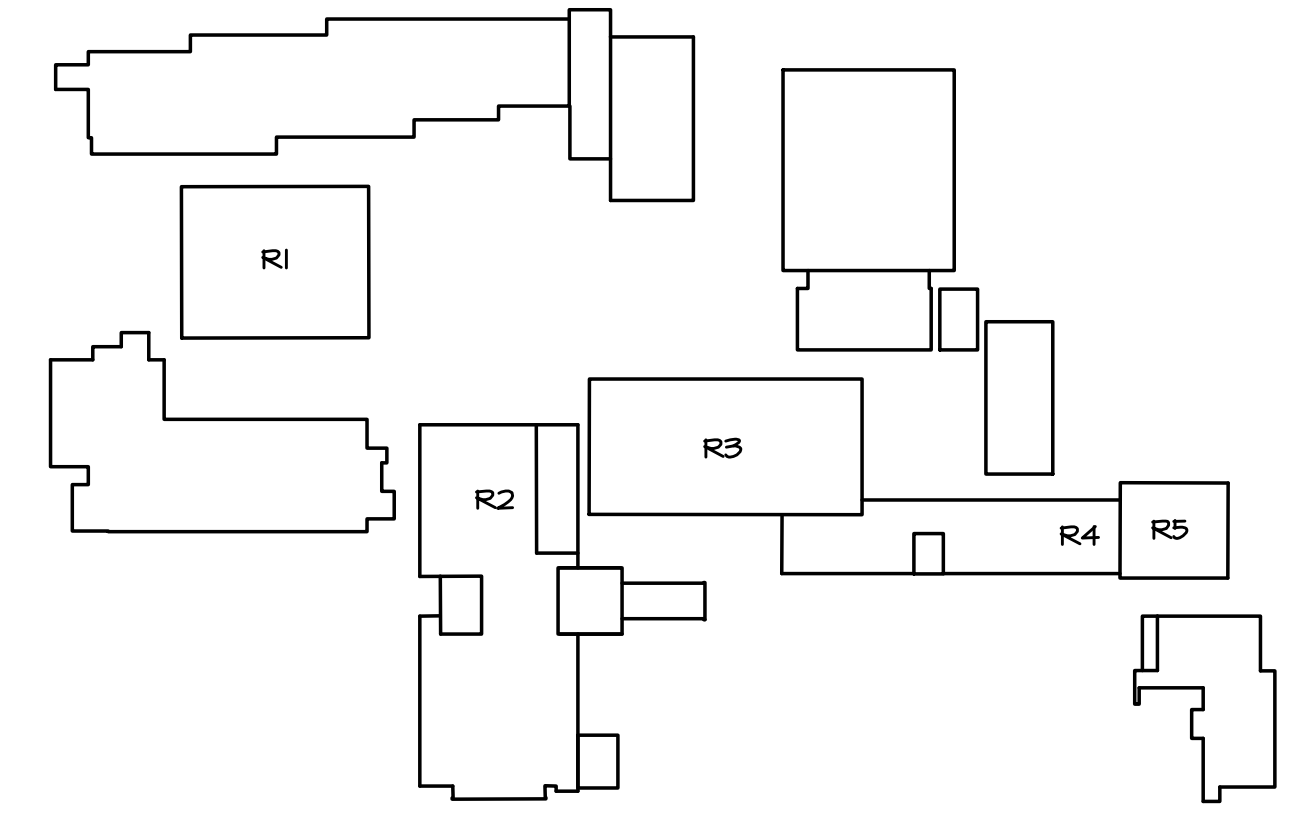
VERIFY EXISTING CONDITIONS SHOWN IN DRAWINGS. PROMPTLY NOTIFY THE ENGINEER IF DETAILS AND INFORMATION CONTAINED ON THESE PLANS DO NOT CONFORM TO THE CONSTRUCTION SITE CONDITIONS.

VERIFY ALL DIMENSIONS AND ELEVATIONS WITH THE DRAWINGS AND WITH ACTUAL FIELD CONDITIONS. DIMENSIONAL CONTROL IS THE RESPONSIBILITY OF THE GENERAL CONTRACTOR. ESTABLISH AND VERIFY ALL OPENINGS AND INSERTS FOR MECHANICAL, ELECTRICAL AND PLUMBING WITH APPROPRIATE TRADES, DRAWINGS AND SUBCONTRACTORS PRIOR TO CONSTRUCTION.

IF THERE ARE CONFLICTS IN THE DRAWINGS, THE COSTLIER ITEMS SHOWN SHALL GOVERN FOR BIDDING PURPOSES, OR SUBMIT A PRE-BID "REQUEST FOR CLARIFICATION".

ENGINEERING DESIGN PROVIDED BY OTHERS SHALL BEAR THE SEAL OF AN ENGINEER REGISTERED IN CALIFORNIA.

NOTE:
 DESIGN PROVIDED FOR SOLAR MODULE RACKING AND STANDOFF. ATTACHMENT TO ROOF SHALL BE PROVIDED BY OTHERS. THE CAPACITY OF THE EXISTING ROOF AND BUILDING STRUCTURE TO SUPPORT THE SOLAR ARRAY IS TO BE DETERMINED BY OTHERS.



KEY PLAN
 SCALE: _____ N.T.S.



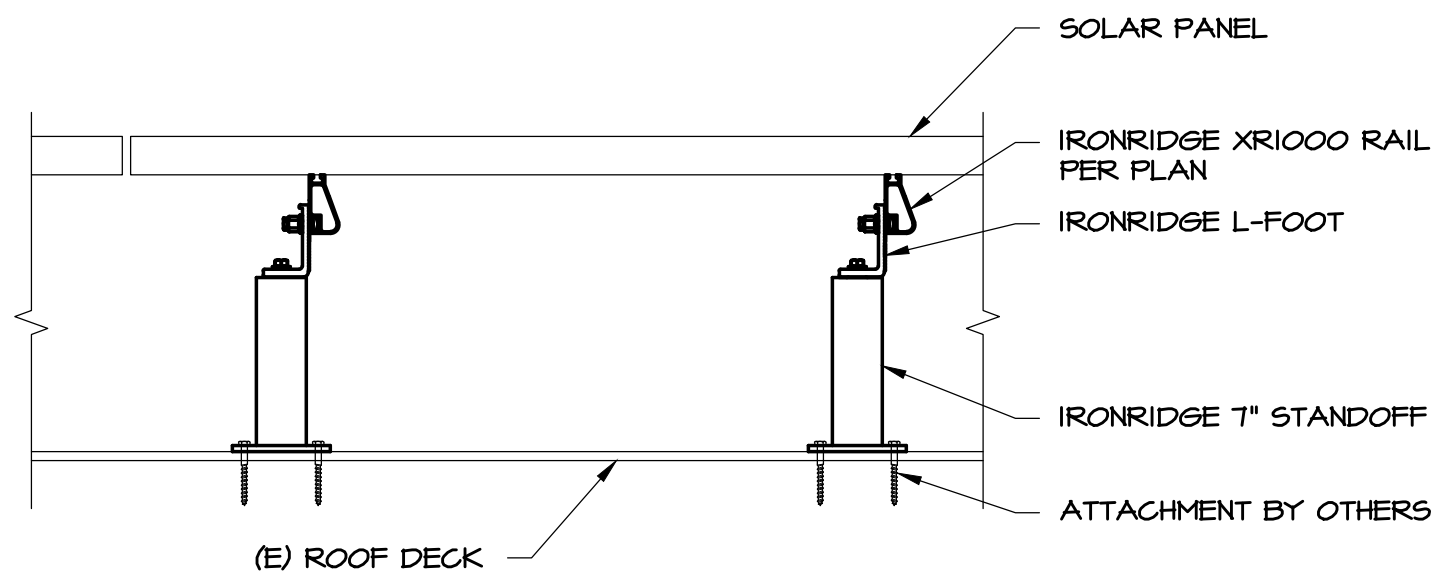
Starling Madison Lofquist, Inc.
 5224 S. 39th Street
 Phoenix, Arizona 85040
 (602) 438-2500
 fax: (602) 438-2505



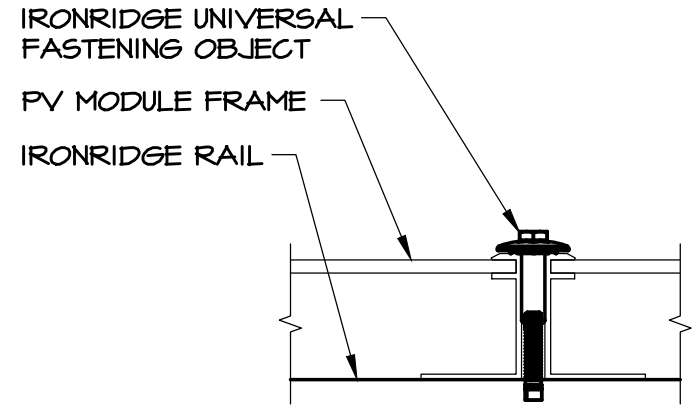
PRELIMINARY IF NOT SIGNED AND SEALED
 DESIGN BY: R.B. DRAWN BY: J.S. CHK. BY: D.H.
 065-13d

PV ARRAY - FLUSH MOUNT
 GLENDALE HIGH SCHOOL
 1440 E. BROADWAY
 GLENDALE, CA 91202

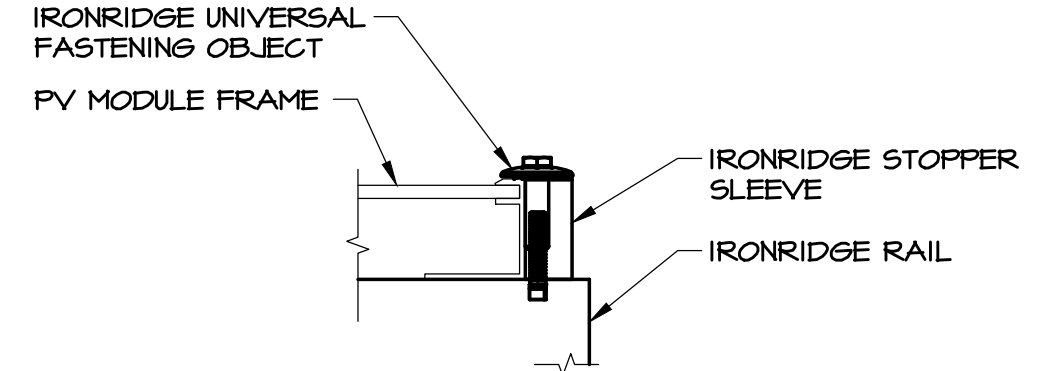
IRONRIDGE
 1495 ZEPHYR AVENUE
 HAYWARD, CA 94545



1 SECTION
 SCALE: 1/2"=1'-0"

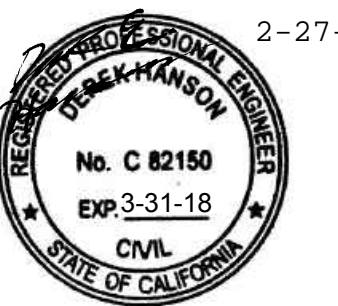


2 SECTION
 SCALE: N.T.S.



3 SECTION
 SCALE: N.T.S.

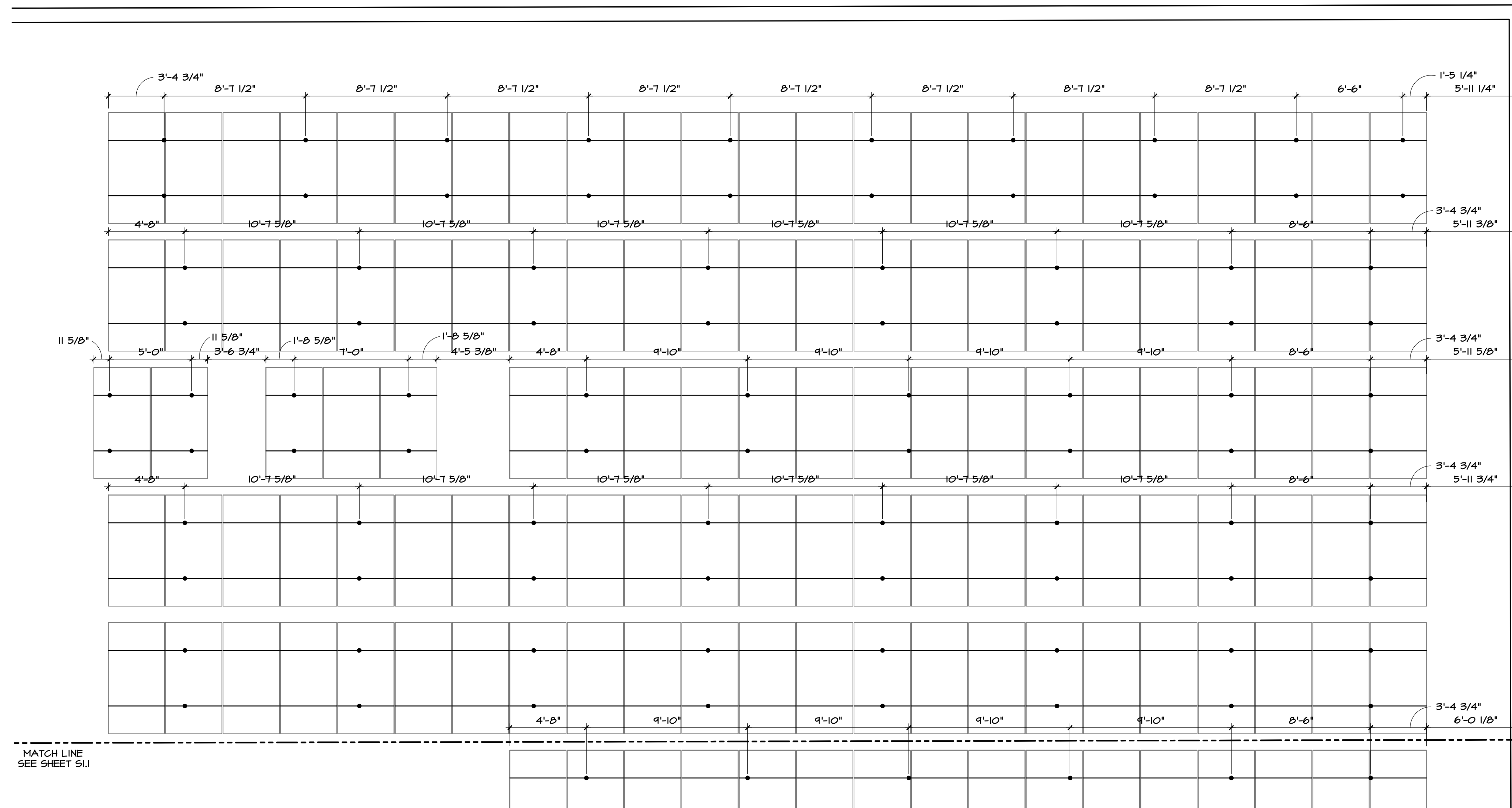
SHEET NUMBER	SHEET INDEX	REVISION	DATE
50.1	GENERAL STRUCTURAL NOTES SHEET INDEX, DETAILS	*	
51.0	PARTIAL ROOF FRAMING PLAN ROOF R1	*	
51.1	PARTIAL ROOF FRAMING PLAN ROOF R1	*	
52.0	PARTIAL ROOF FRAMING PLAN ROOF R2	*	
52.1	PARTIAL ROOF FRAMING PLAN ROOF R2	*	
52.2	PARTIAL ROOF FRAMING PLAN ROOF R2	*	
53.0	PARTIAL ROOF FRAMING PLAN ROOF R3	*	
53.1	PARTIAL ROOF FRAMING PLAN ROOF R3	*	
53.2	PARTIAL ROOF FRAMING PLAN ROOF R3	*	
53.3	PARTIAL ROOF FRAMING PLAN ROOF R3	*	
54.0	PARTIAL ROOF FRAMING PLAN ROOF R4	*	
55.0	PARTIAL ROOF FRAMING PLAN ROOF R5	*	



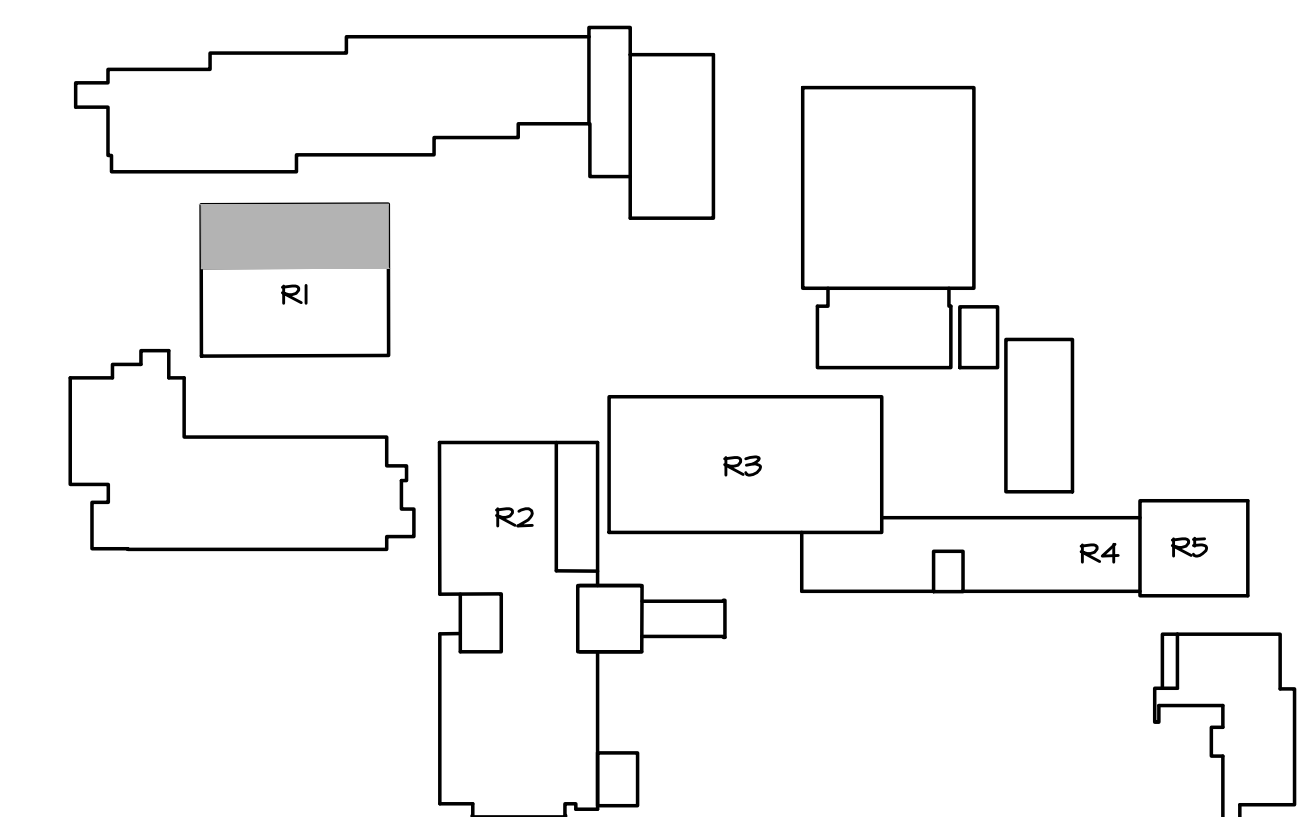
PRELIMINARY IF NOT SIGNED AND SEALED
 DESIGN BY: R.B. DRAWN BY: J.S. CHK. BY: D.H.
 065-13d

PV ARRAY - FLUSH MOUNT
 GLENDALE HIGH SCHOOL
 1440 E. BROADWAY
 GLENDALE, CA 91202

IRONRIDGE
 1495 ZEPHYR AVENUE
 HAYWARD, CA 94545

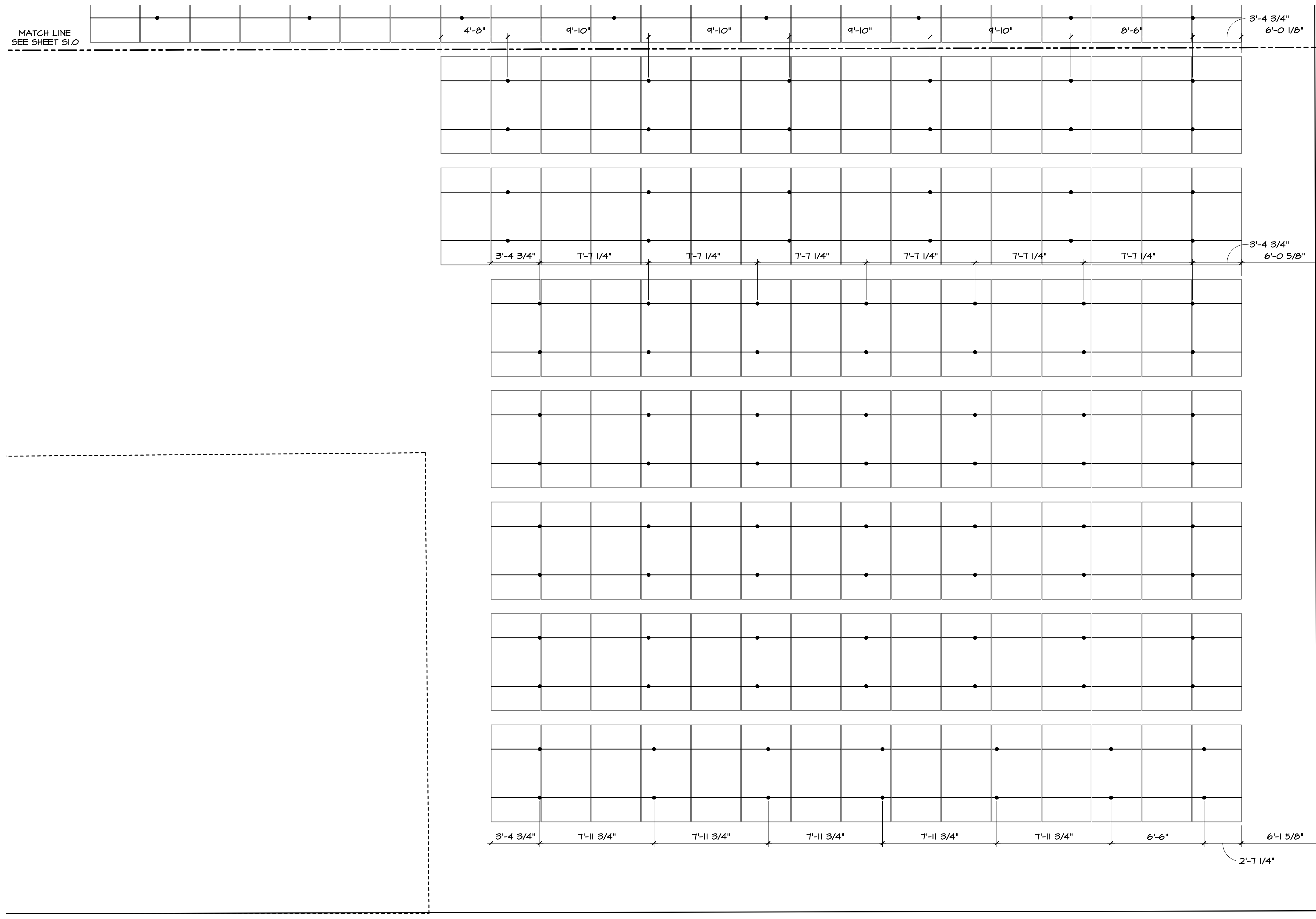


PARTIAL ROOF PLAN
 SCALE: 1/4"=1'-0"



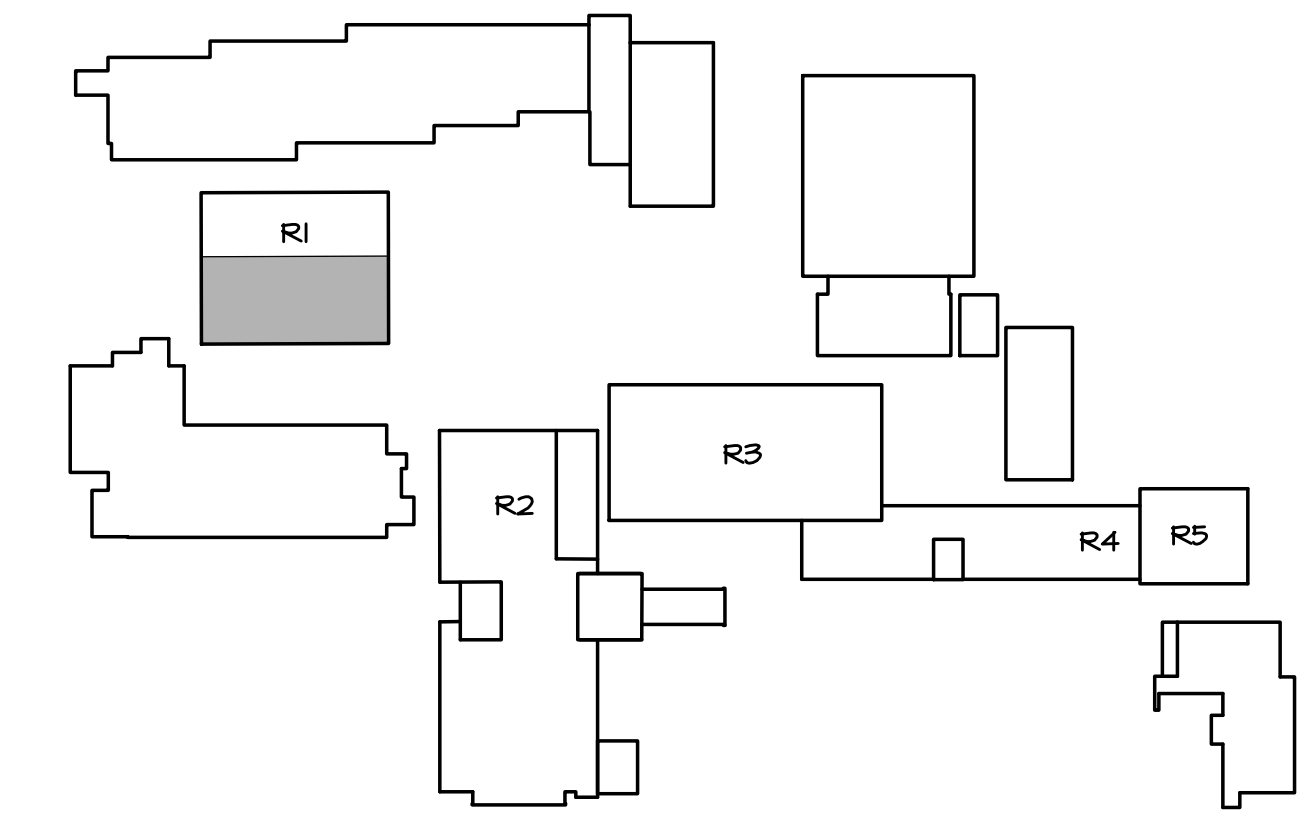
KEY PLAN
 SCALE: N.T.S.





MATCH LINE
SEE SHEET S1.0

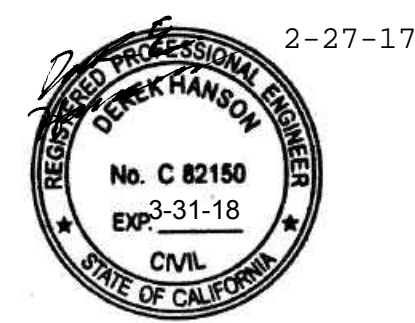
PARTIAL ROOF PLAN
SCALE: 1/4"=1'-0"



KEY PLAN
SCALE: N.T.S.



Starling Madison Lofquist, Inc.
5224 S. 39th Street
Phoenix, Arizona 85040
(602) 438-2500
fax: (602) 438-2505



PRELIMINARY IF NOT SIGNED AND SEALED
DESIGN BY: R.B. DRAWN BY: J.S. CHK. BY: D.H.
065-13d

PV ARRAY - FLUSH MOUNT
GLENDALE HIGH SCHOOL
1440 E. BROADWAY
GLENDALE, CA 91202

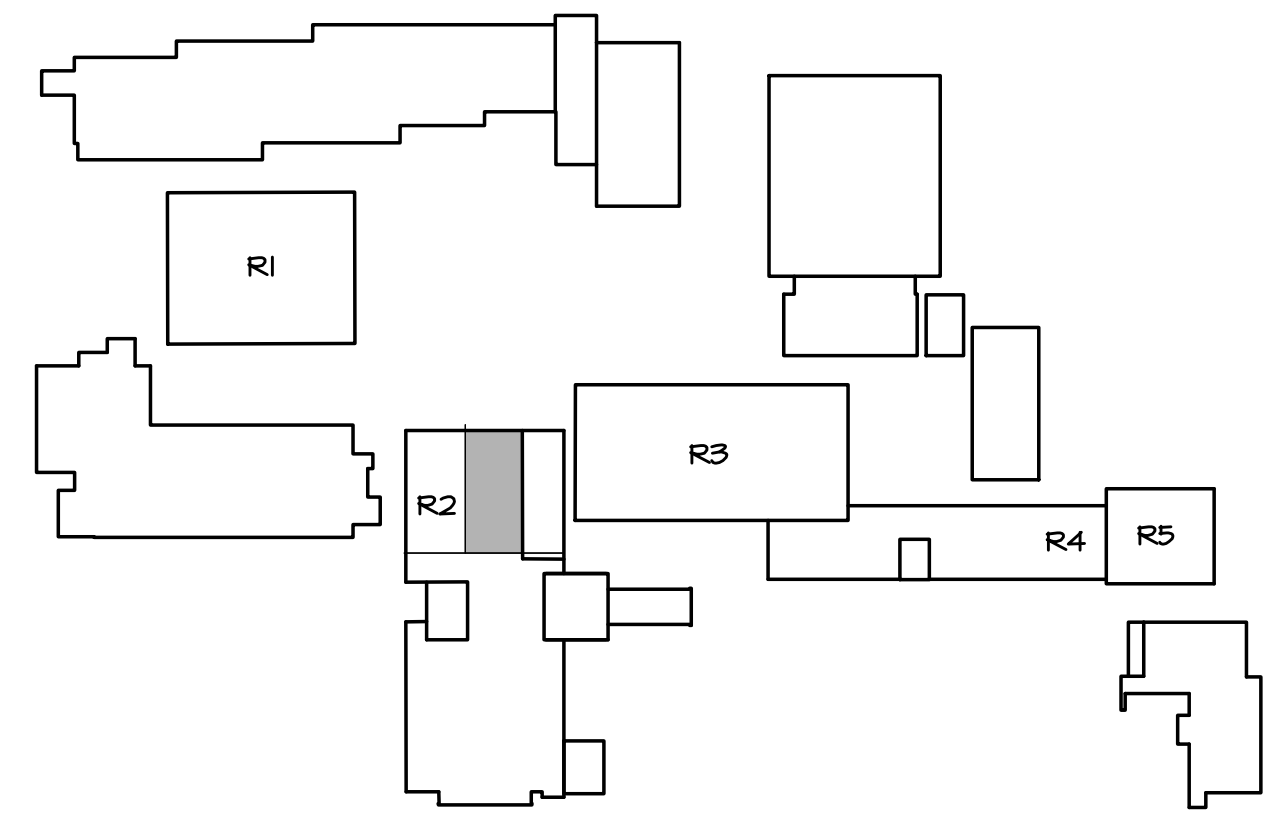
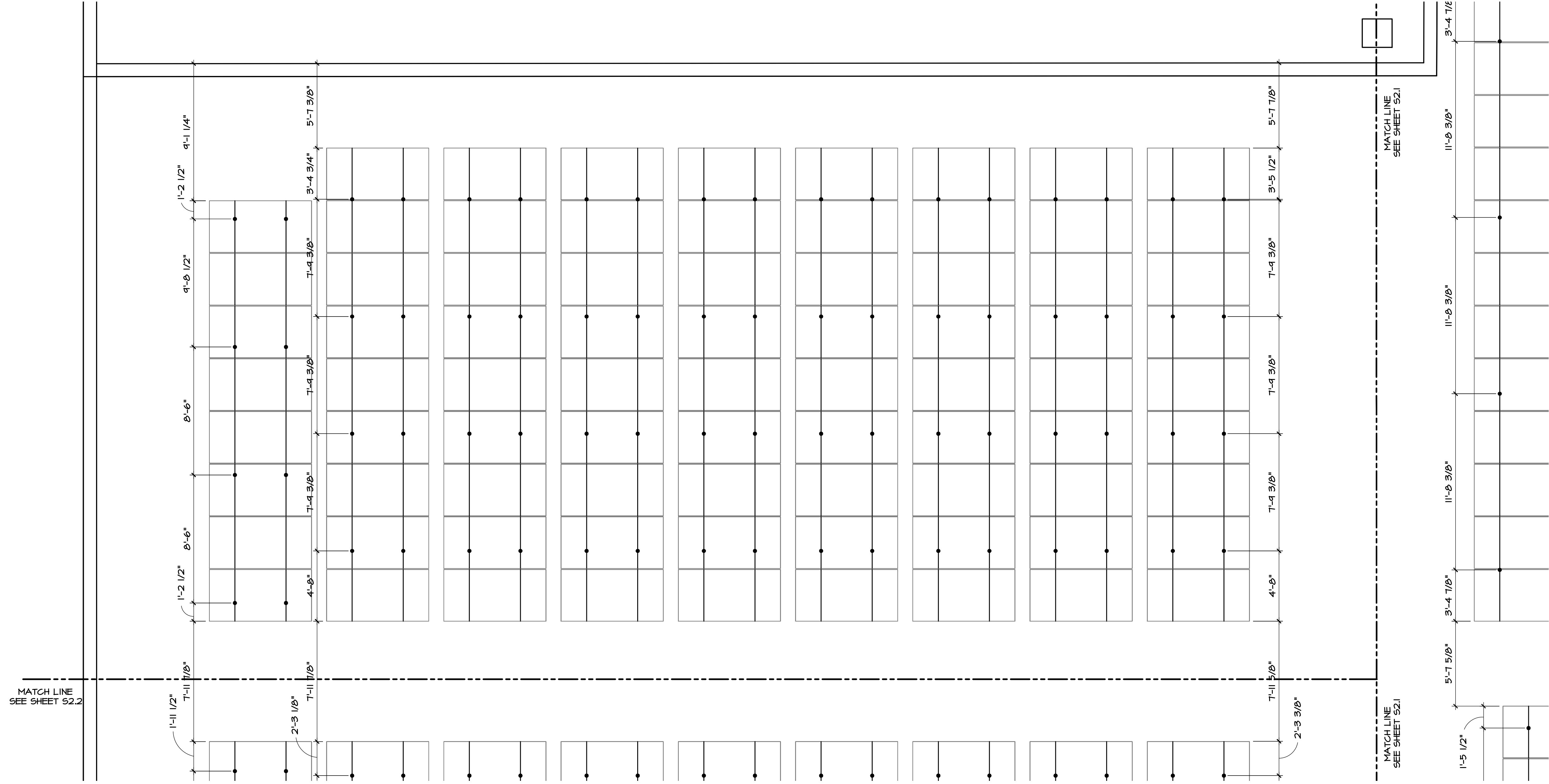
IRONRIDGE
1495 ZEPHYR AVENUE
HAYWARD, CA 94545



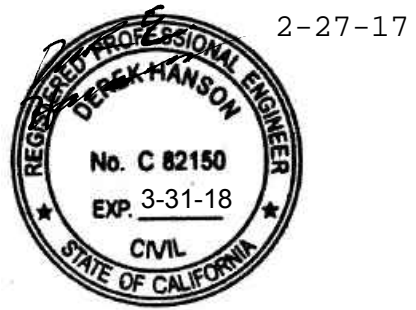
PRELIMINARY IF NOT SIGNED AND SEALED
 DESIGN BY: R.B. DRAWN BY: J.S. CHK. BY: D.H.
 065-13d

PV ARRAY - FLUSH MOUNT
 GLENDALE HIGH SCHOOL
 1440 E. BROADWAY
 GLENDALE, CA 91202

IRONRIDGE
 1495 ZEPHYR AVENUE
 HAYWARD, CA 94545



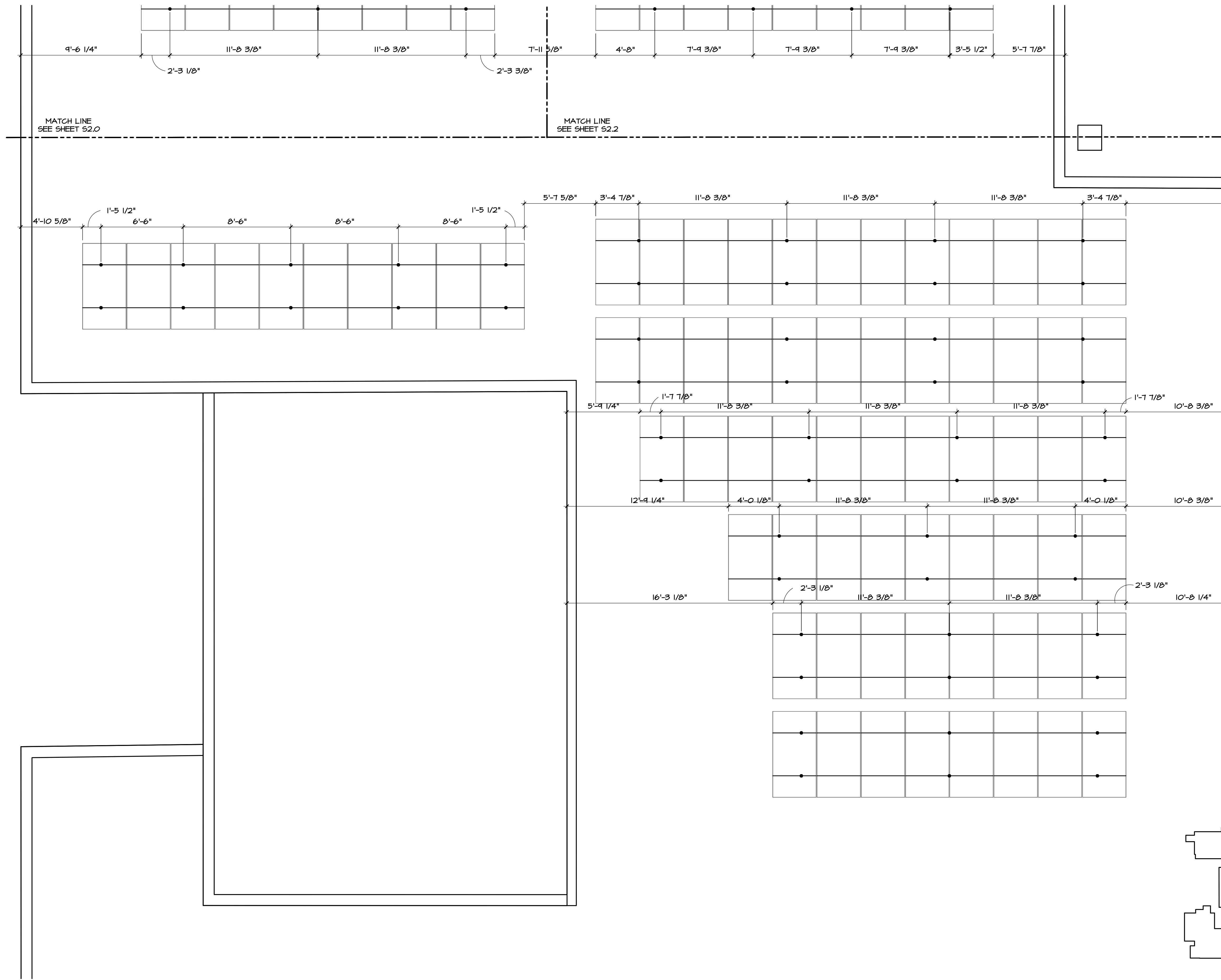
Starling Madison Lofquist, Inc.
 5224 S. 39th Street
 Phoenix, Arizona 85040
 (602) 438-2500
 fax: (602) 438-2505



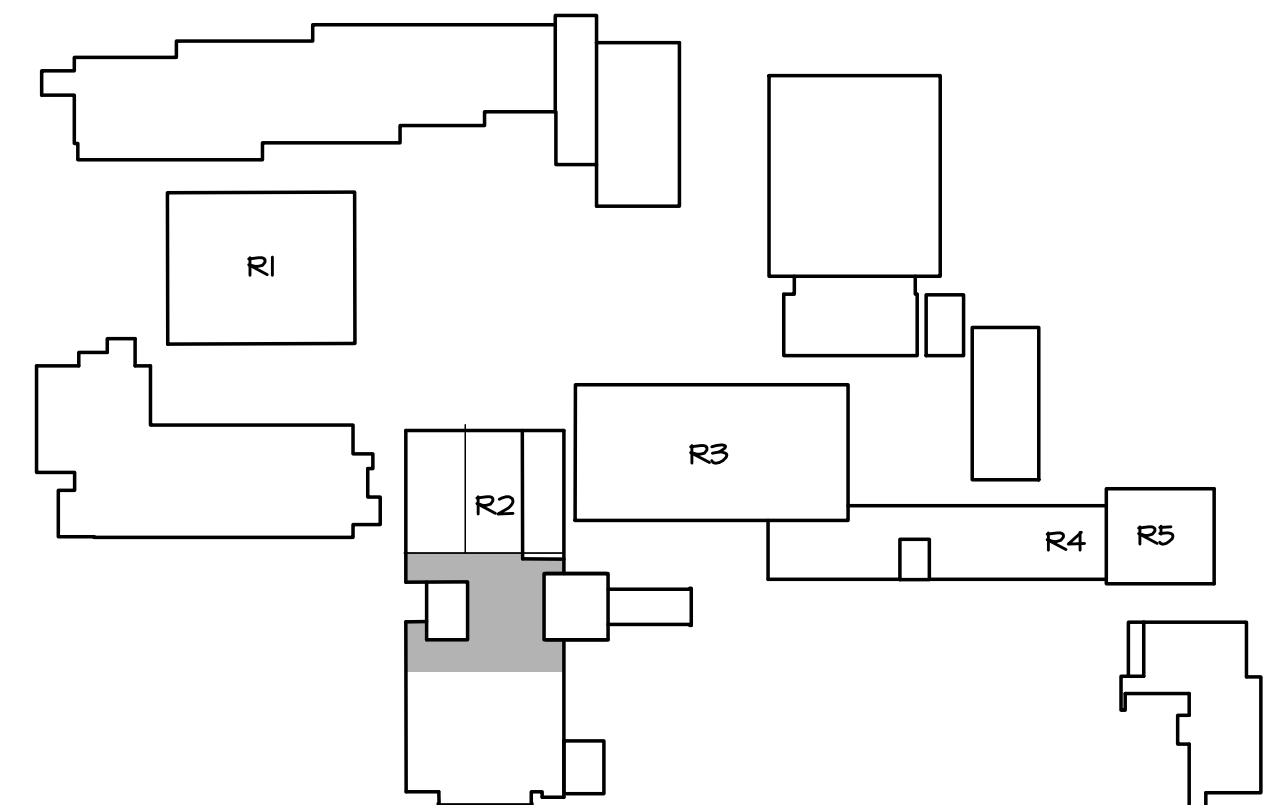
PRELIMINARY IF NOT SIGNED AND SEALED
 DESIGN BY: R.B. DRAWN BY: J.S. CHK. BY: D.H.
 065-13d

PV ARRAY - FLUSH MOUNT
 GLENDALE HIGH SCHOOL
 1440 E. BROADWAY
 GLENDALE, CA 91202

IRONRIDGE
 1495 ZEPHYR AVENUE
 HAYWARD, CA 94545

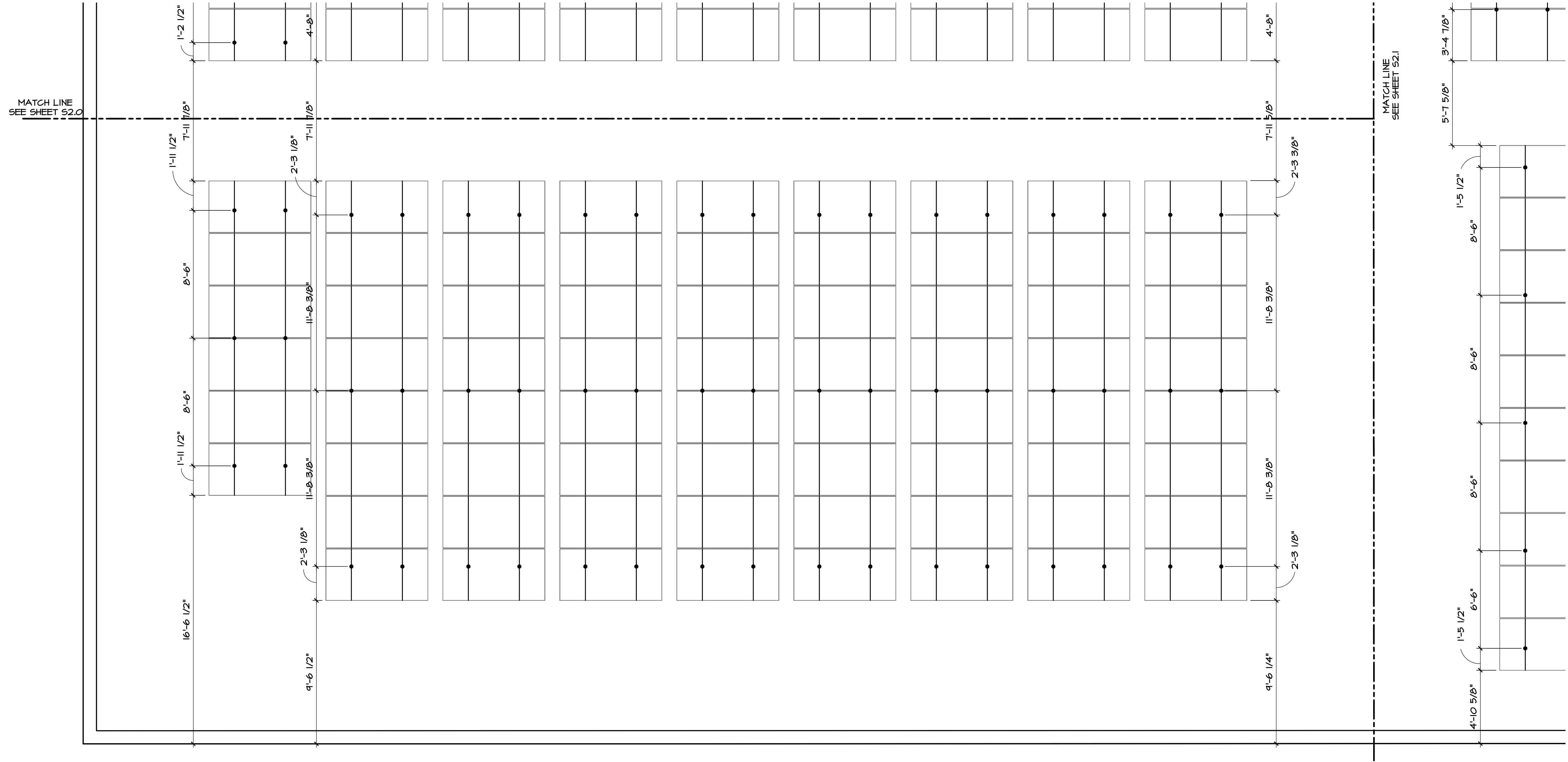


PARTIAL ROOF PLAN
 SCALE: 1/4"=1'-0"



KEY PLAN
 SCALE: N.T.S.



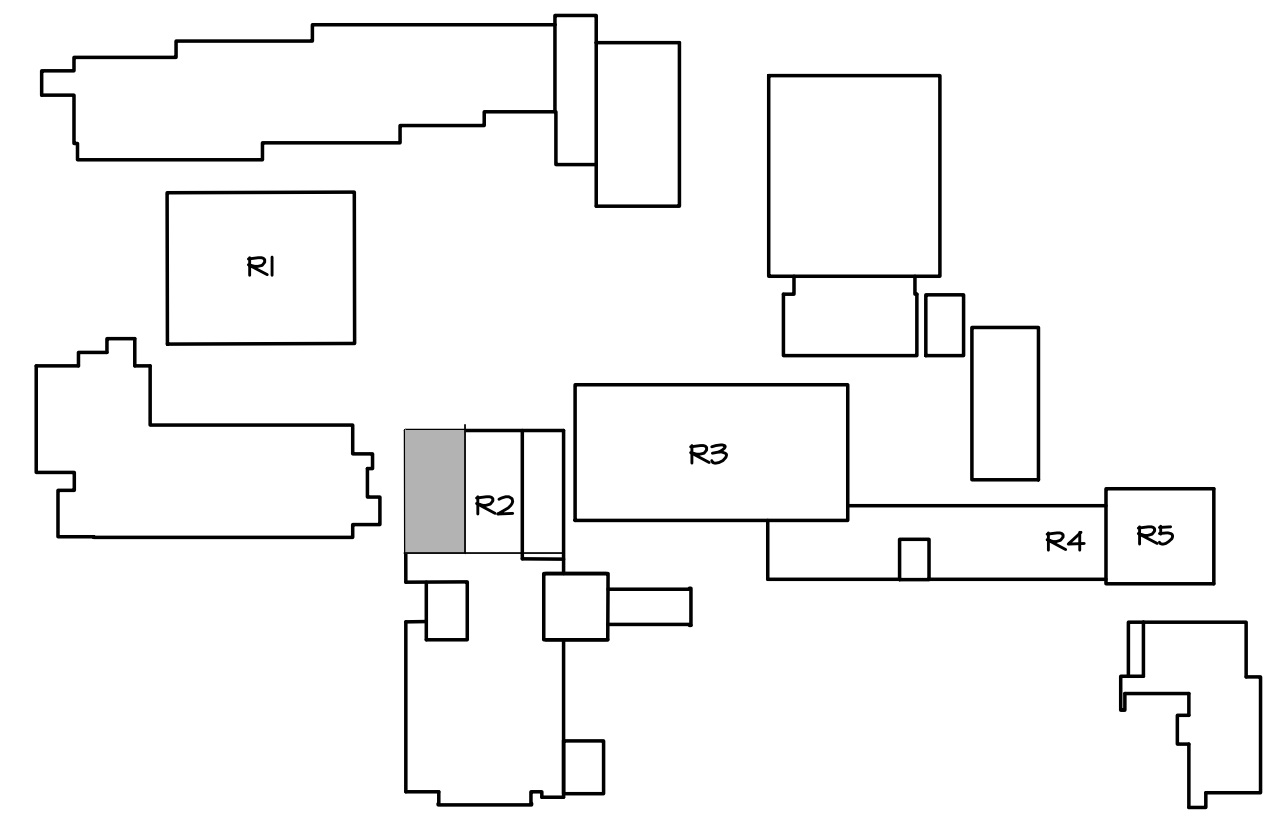


MATCH LINE
SEE SHEET S2.0

MATCH LINE
SEE SHEET S2.1

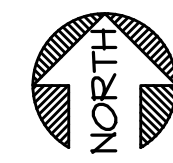
PARTIAL ROOF PLAN

SCALE: 1/4"=1'-0"

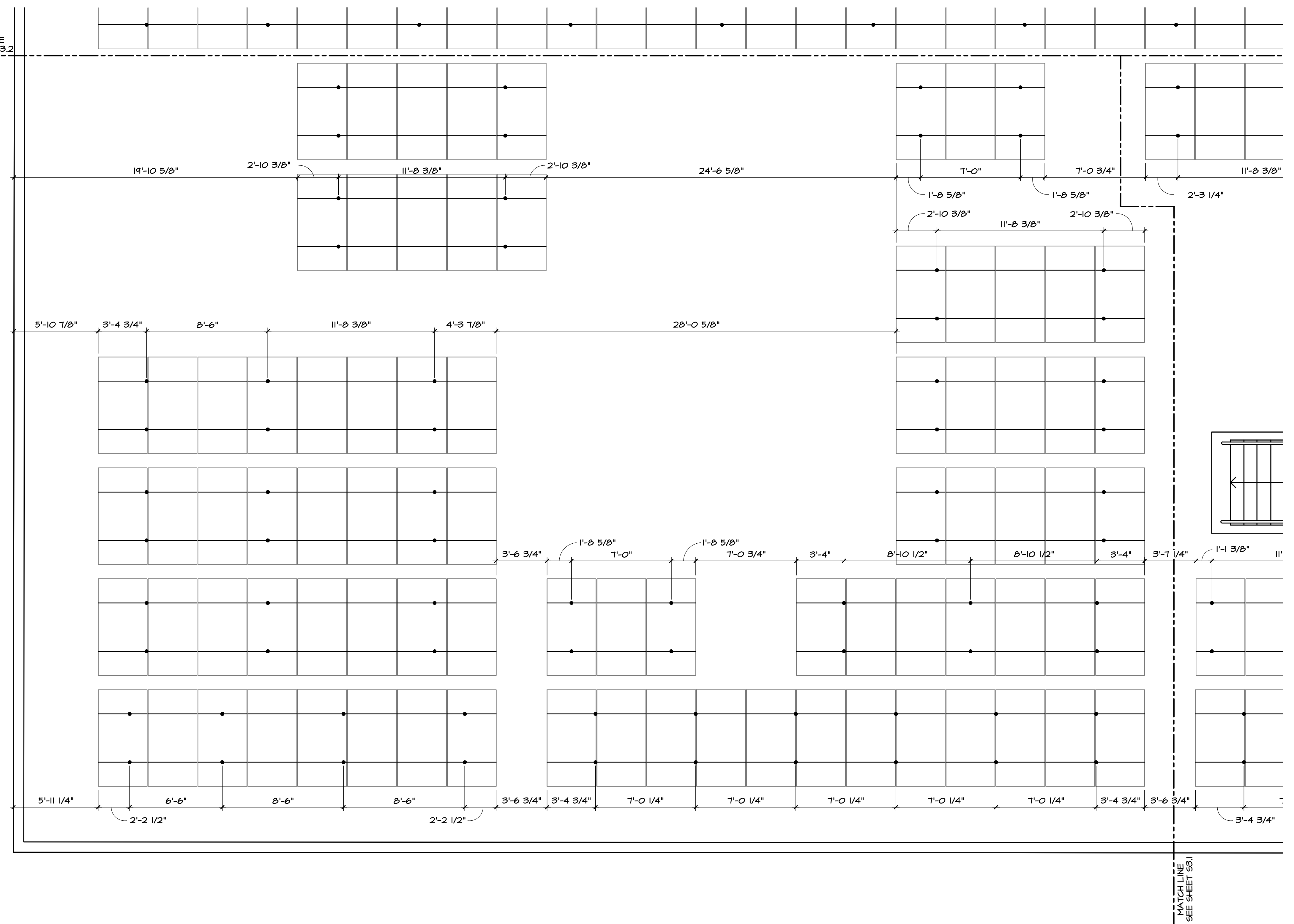


KEY PLAN

SCALE: N.T.S.

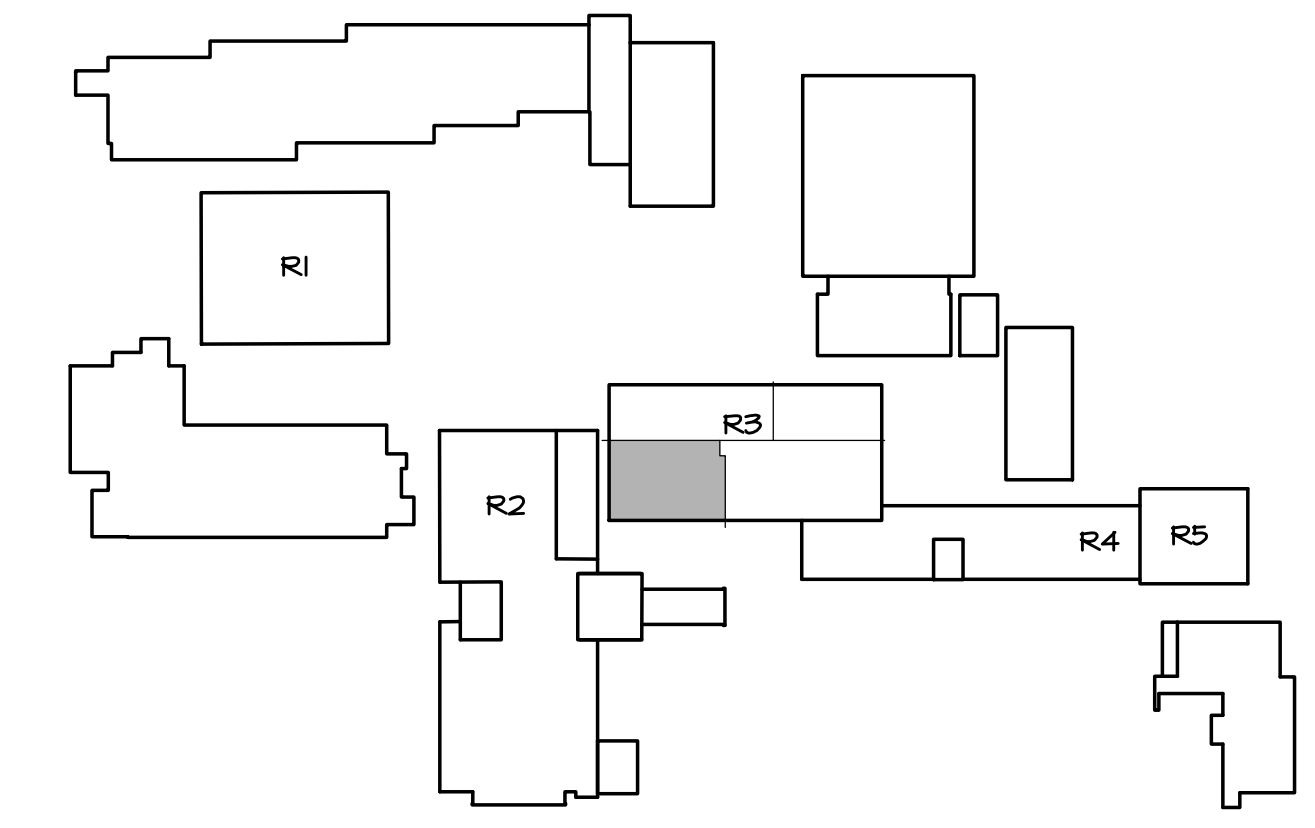


MATCH LINE
SEE SHEET S3.2

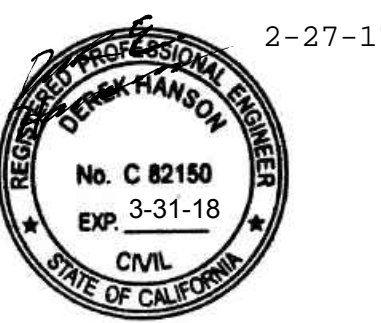


MATCH LINE
SEE SHEET S3.1

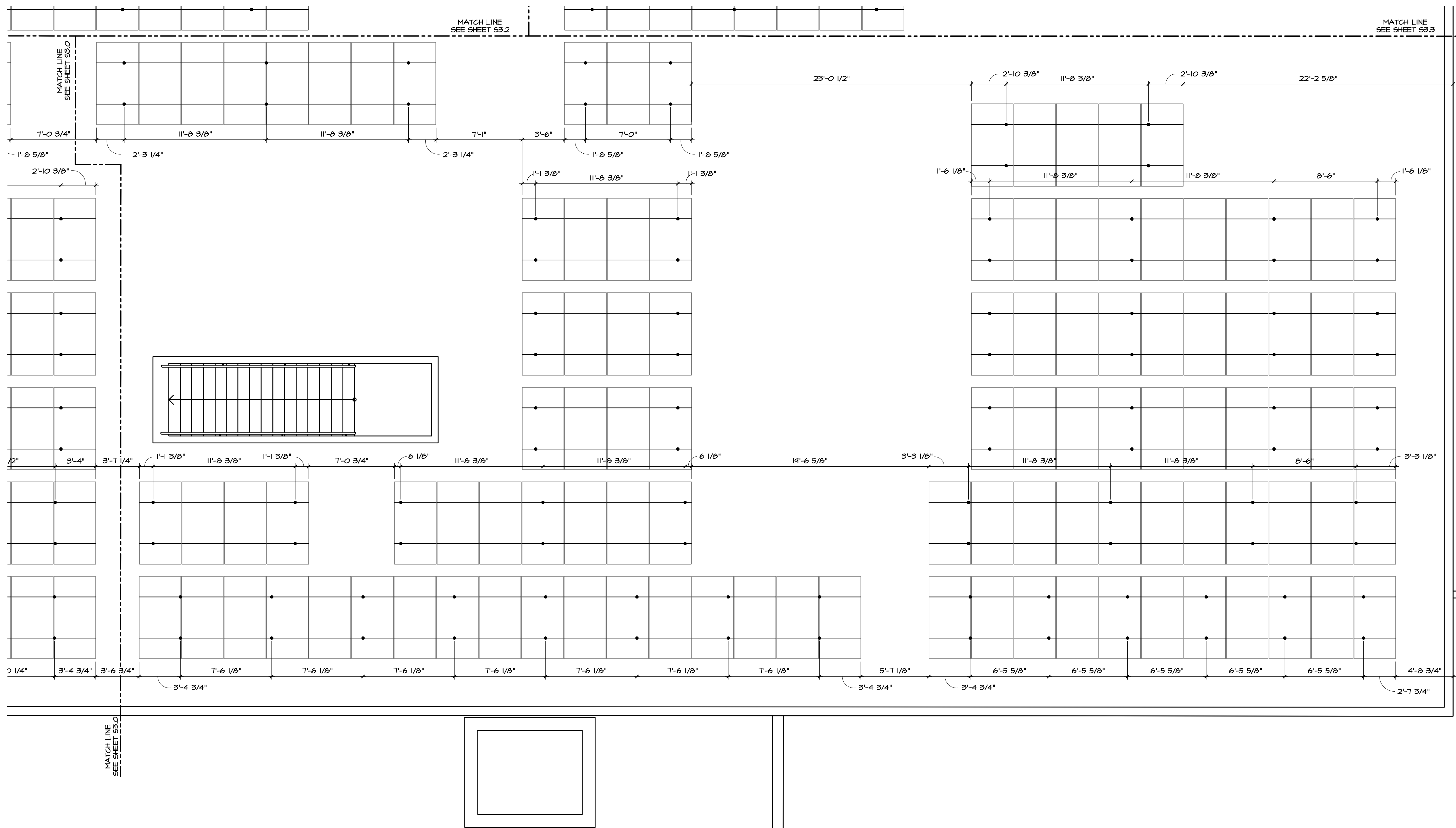
PARTIAL ROOF PLAN
SCALE: 1/4"=1'-0"



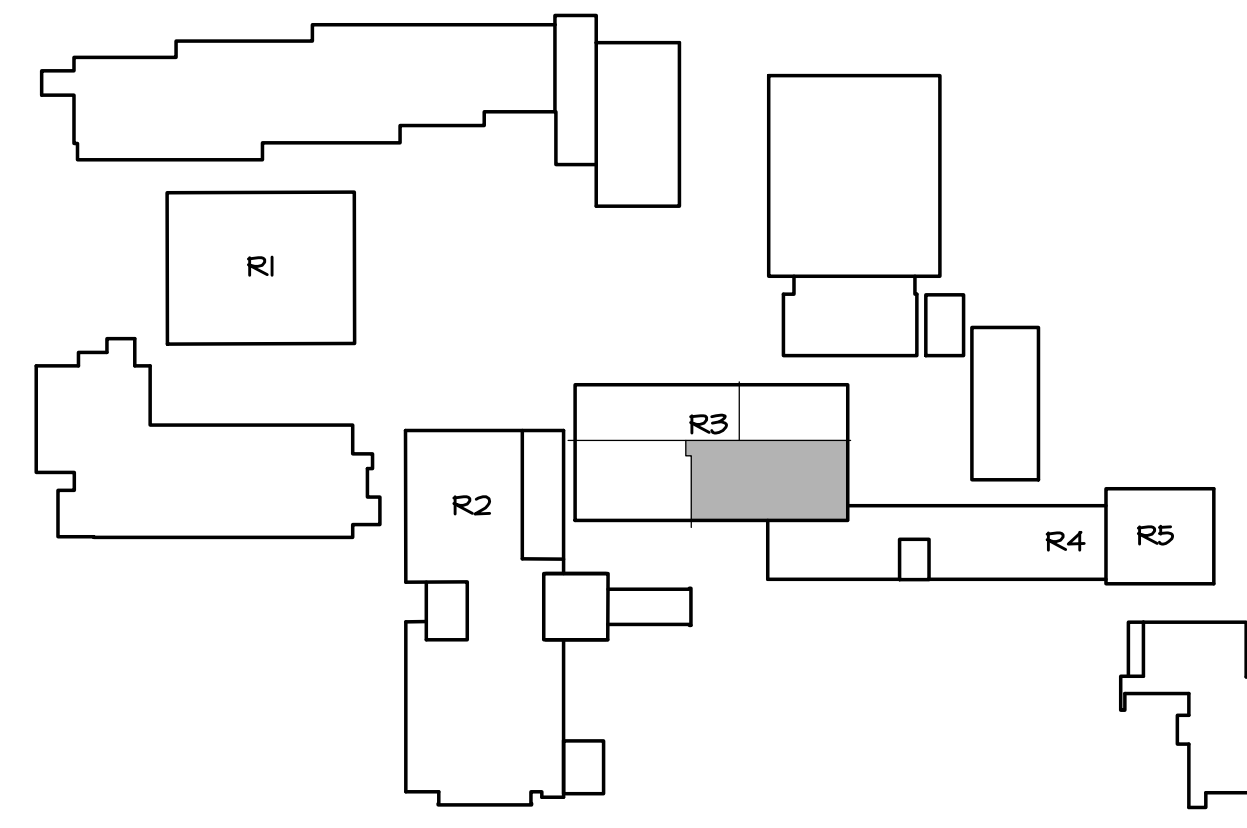
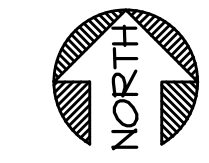
KEY PLAN
SCALE: N.T.S.



PRELIMINARY IF NOT SIGNED AND SEALED
DESIGN BY: R.B. DRAWN BY: J.S. CHK. BY: D.H.
065-13d

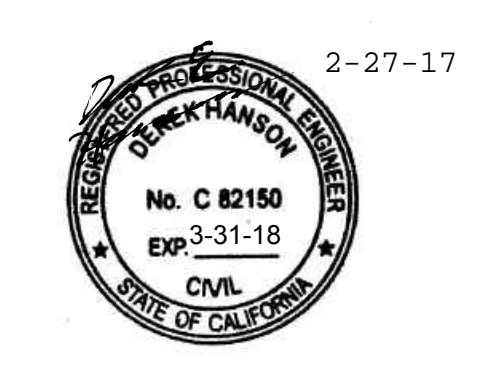


PARTIAL ROOF PLAN
SCALE: 1/4"=1'-0"



KEY PLAN
SCALE: N.T.S.

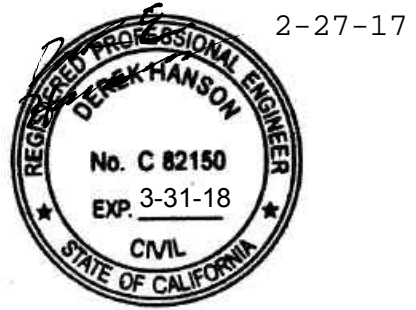
Starling Madison Lofquist, Inc.
5224 S. 39th Street
Phoenix, Arizona 85040
(602) 438-2500
fax: (602) 438-2505



PRELIMINARY IF NOT SIGNED AND SEALED
DESIGN BY: R.B. DRAWN BY: J.S. CHK. BY: D.H.
065-13d

PV ARRAY - FLUSH MOUNT
GLENDALE HIGH SCHOOL
1440 E. BROADWAY
GLENDALE, CA 91202

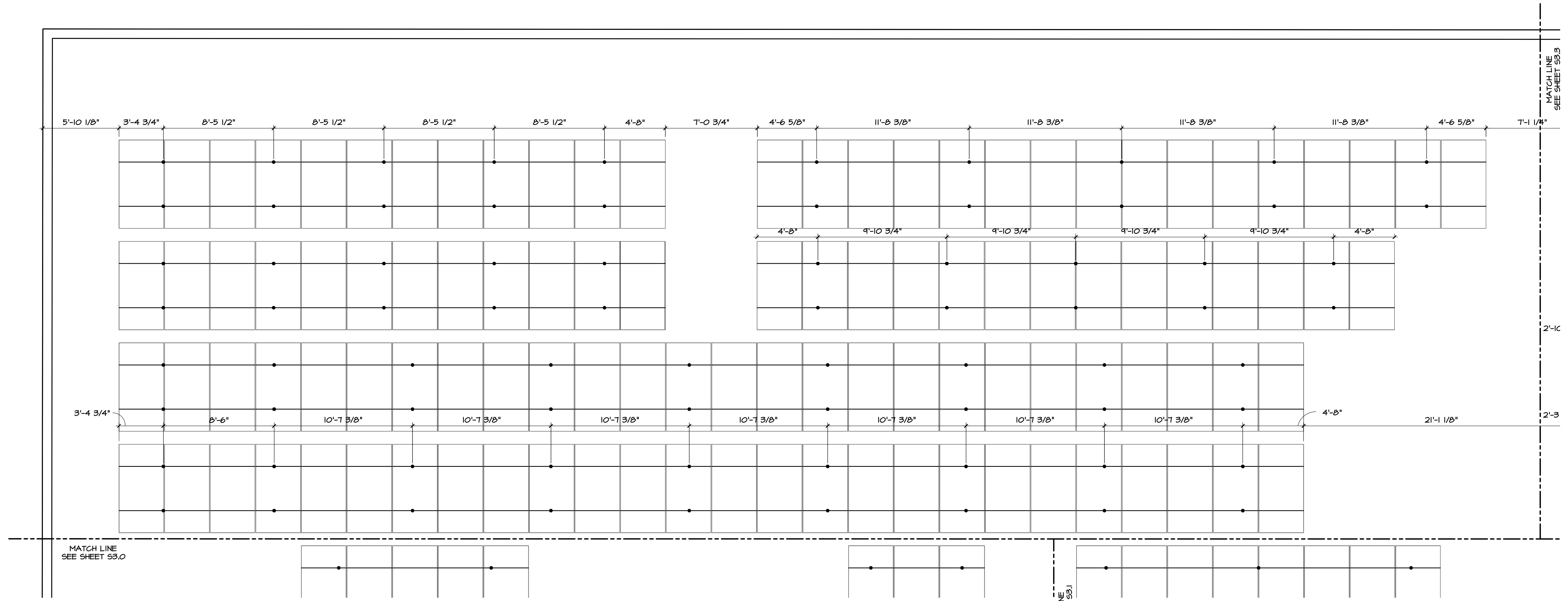
IRONRIDGE
1495 ZEPHYR AVENUE
HAYWARD, CA 94545



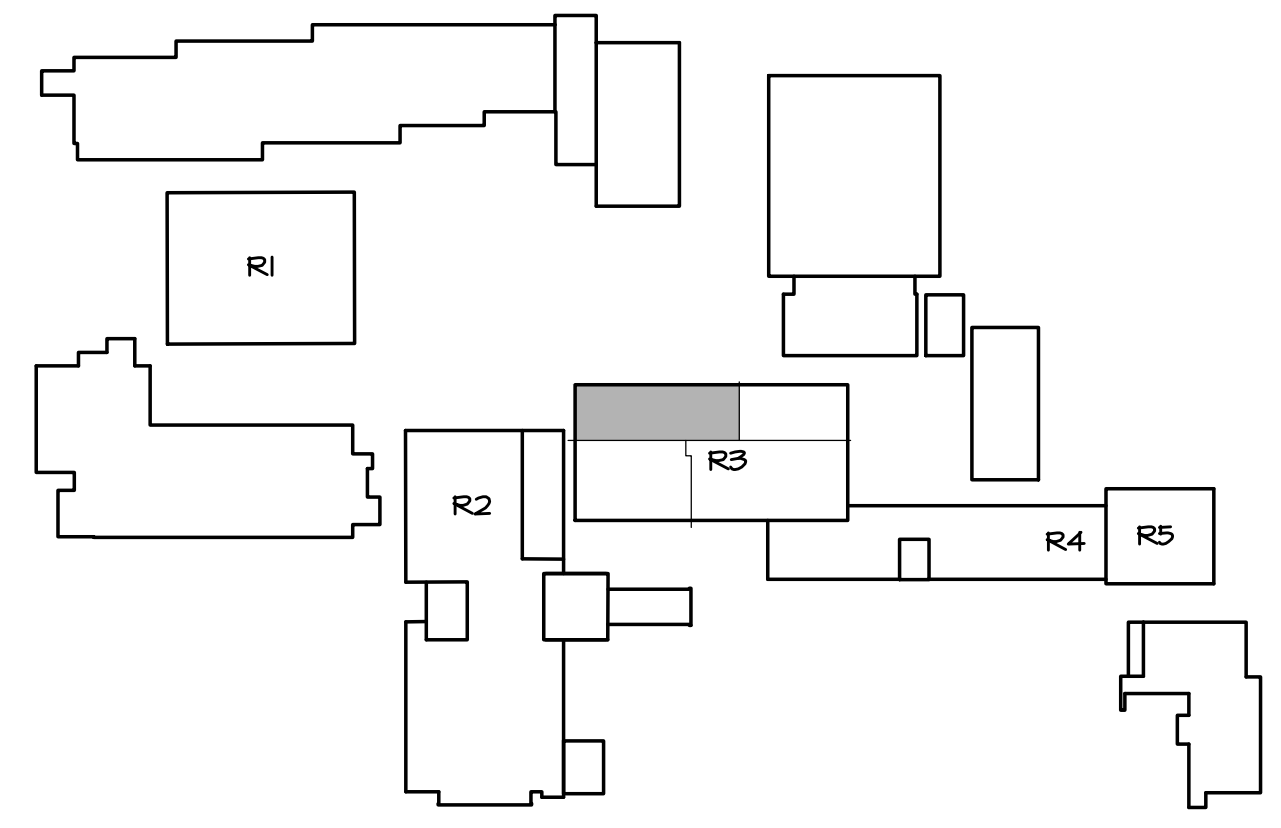
PRELIMINARY IF NOT SIGNED AND SEALED
 DESIGN BY: R.B. DRAWN BY: J.S. CHK. BY: D.H.
 065-13d

PV ARRAY - FLUSH MOUNT
 GLENDALE HIGH SCHOOL
 1440 E. BROADWAY
 GLENDALE, CA 91202

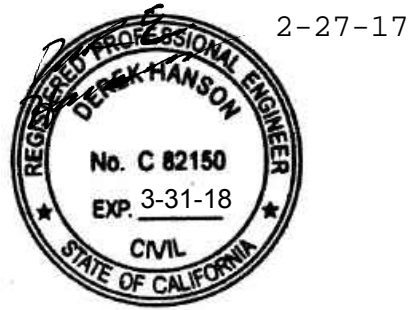
IRONRIDGE
 1495 ZEPHYR AVENUE
 HAYWARD, CA 94545



PARTIAL ROOF PLAN
 SCALE: 1/4"=1'-0"



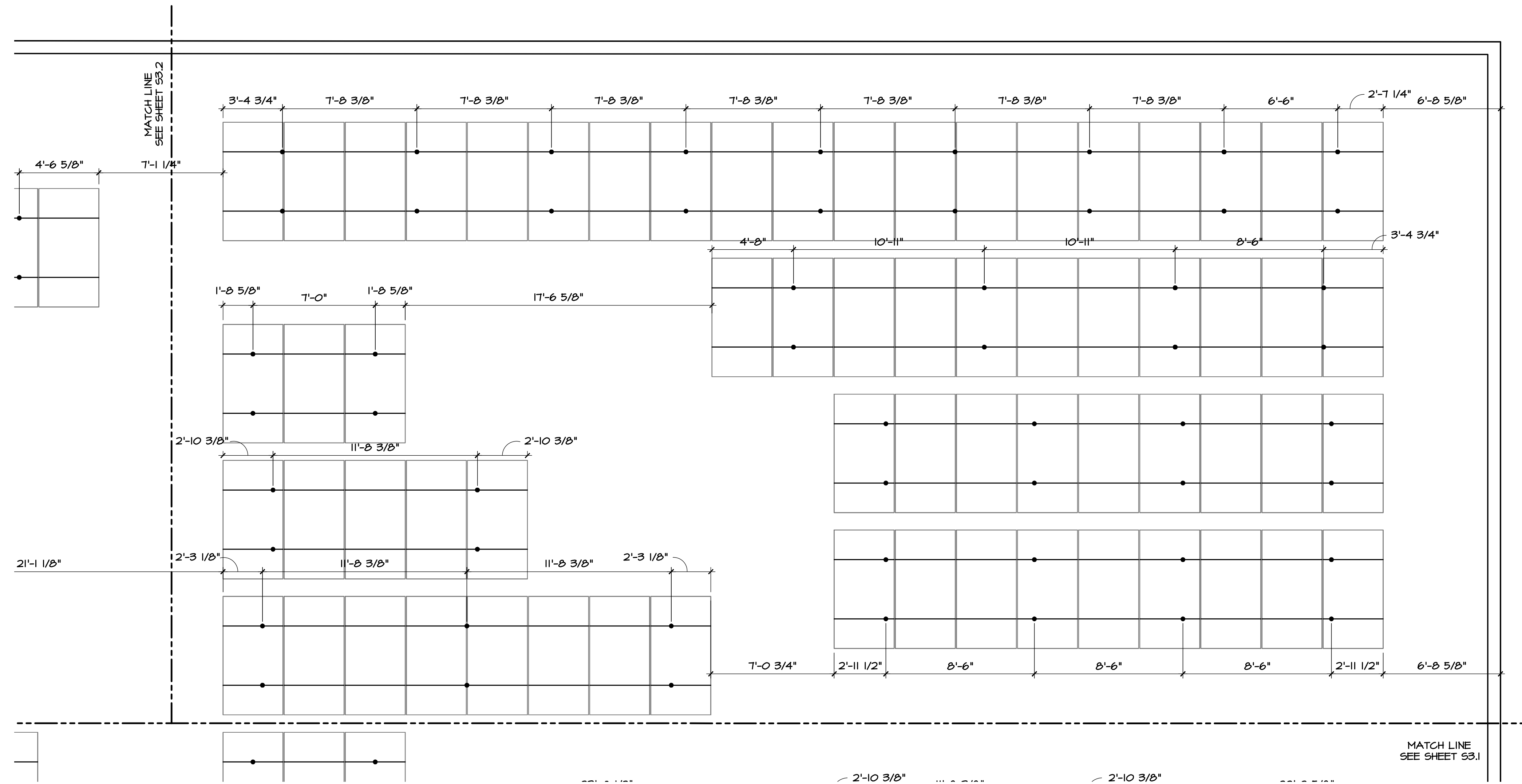
KEY PLAN
 SCALE: N.T.S.



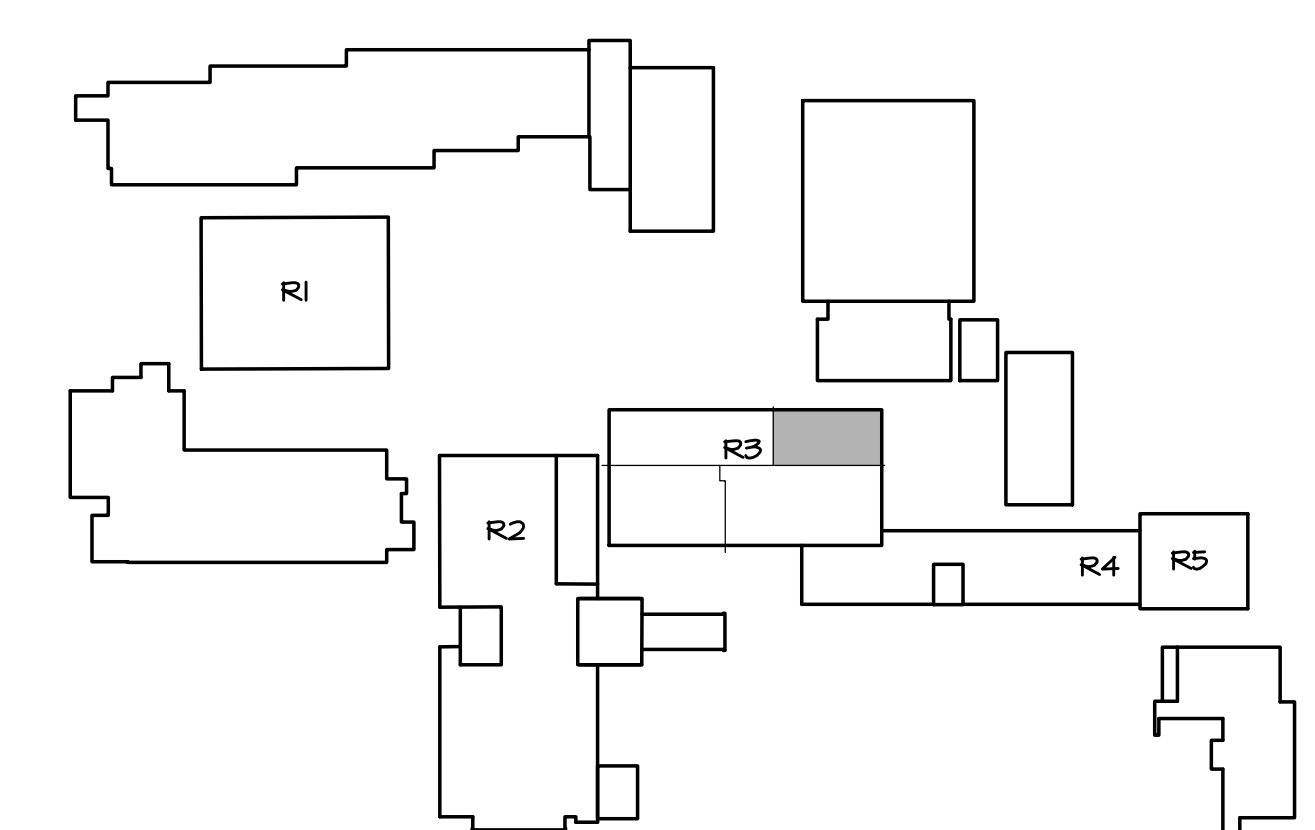
PRELIMINARY IF NOT SIGNED AND SEALED
DESIGN BY: R.B. DRAWN BY: J.S. CHK. BY: D.H.
065-13d

PV ARRAY - FLUSH MOUNT
GLENDALE HIGH SCHOOL
1440 E. BROADWAY
GLENDALE, CA 91202

IRONRIDGE
1495 ZEPHYR AVENUE
HAYWARD, CA 94545



PARTIAL ROOF PLAN
SCALE: 1/4"=1'-0"



KEY PLAN
SCALE: N.T.S.



Starling Madison Lofquist, Inc.
 5224 S. 39th Street
 Phoenix, Arizona 85040
 (602) 438-2500
 fax: (602) 438-2505

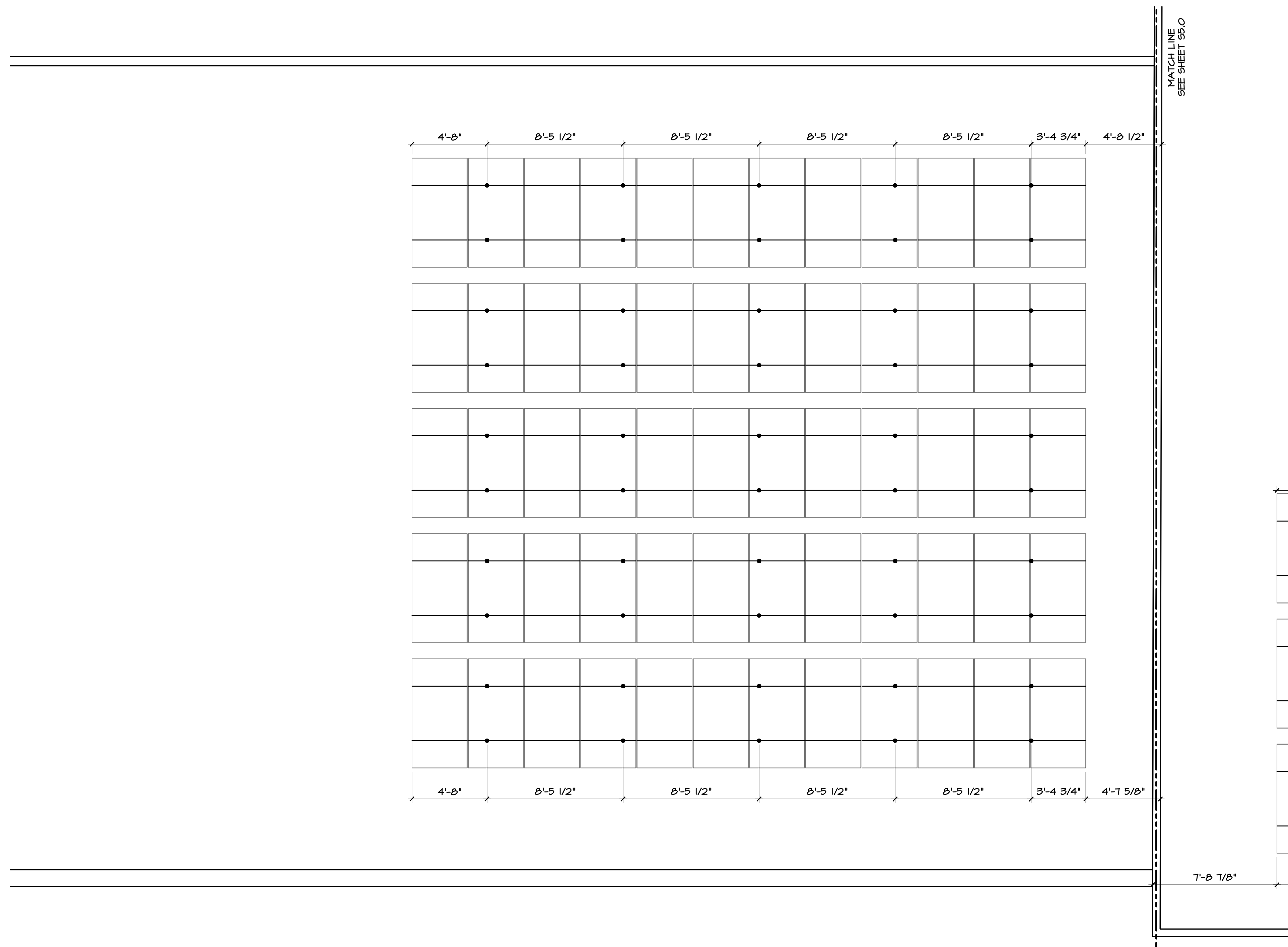


PRELIMINARY IF NOT SIGNED AND SEALED
 DESIGN BY: R.B. DRAWN BY: J.S. CHK. BY: D.H.
 065-13d

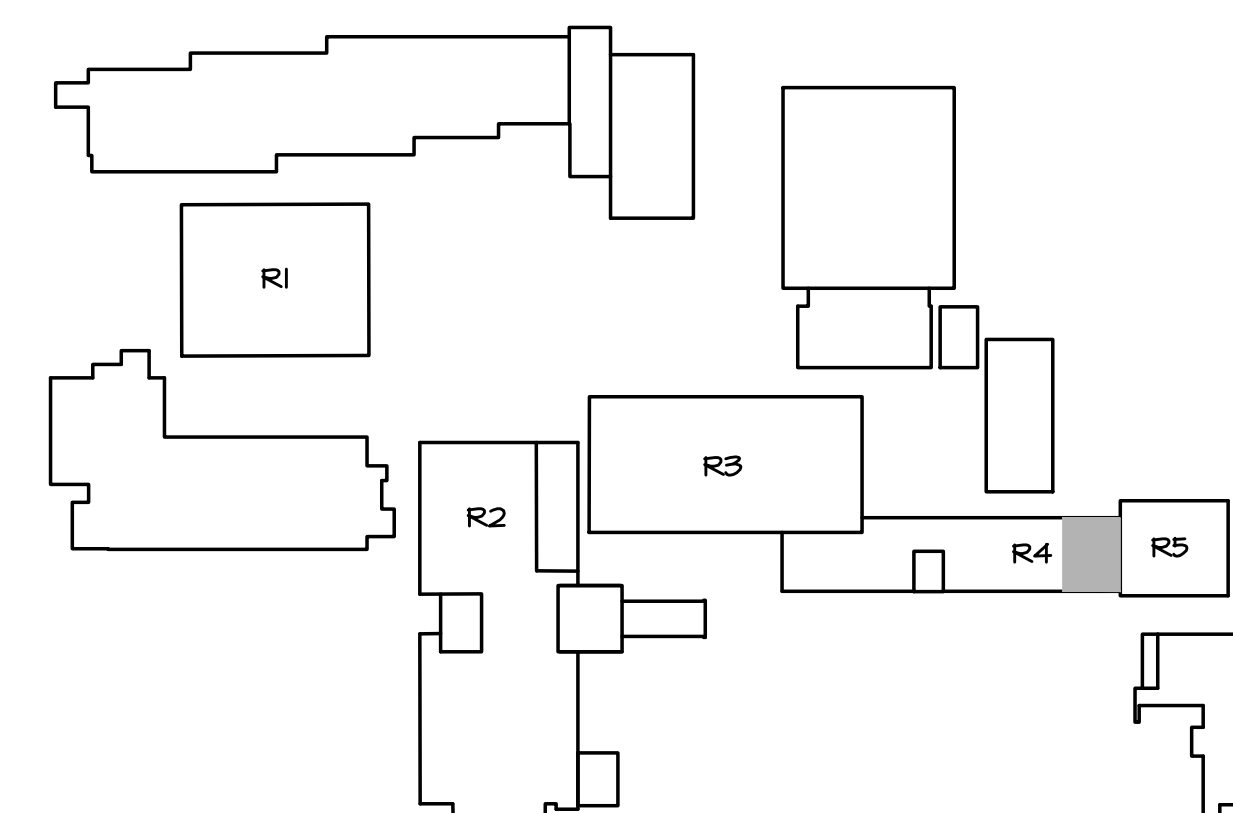
PV ARRAY - FLUSH MOUNT
 GLENDALE HIGH SCHOOL
 1440 E. BROADWAY
 GLENDALE, CA 91202

IRONRIDGE
 1495 ZEPHYR AVENUE
 HAYWARD, CA 94545

S4.0



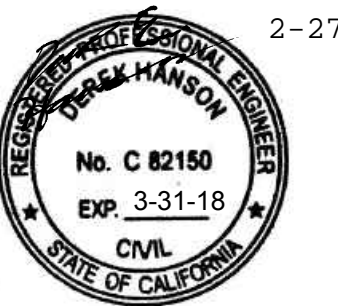
PARTIAL ROOF PLAN
 SCALE: 1/4"=1'-0"



KEY PLAN
 SCALE: N.T.S.



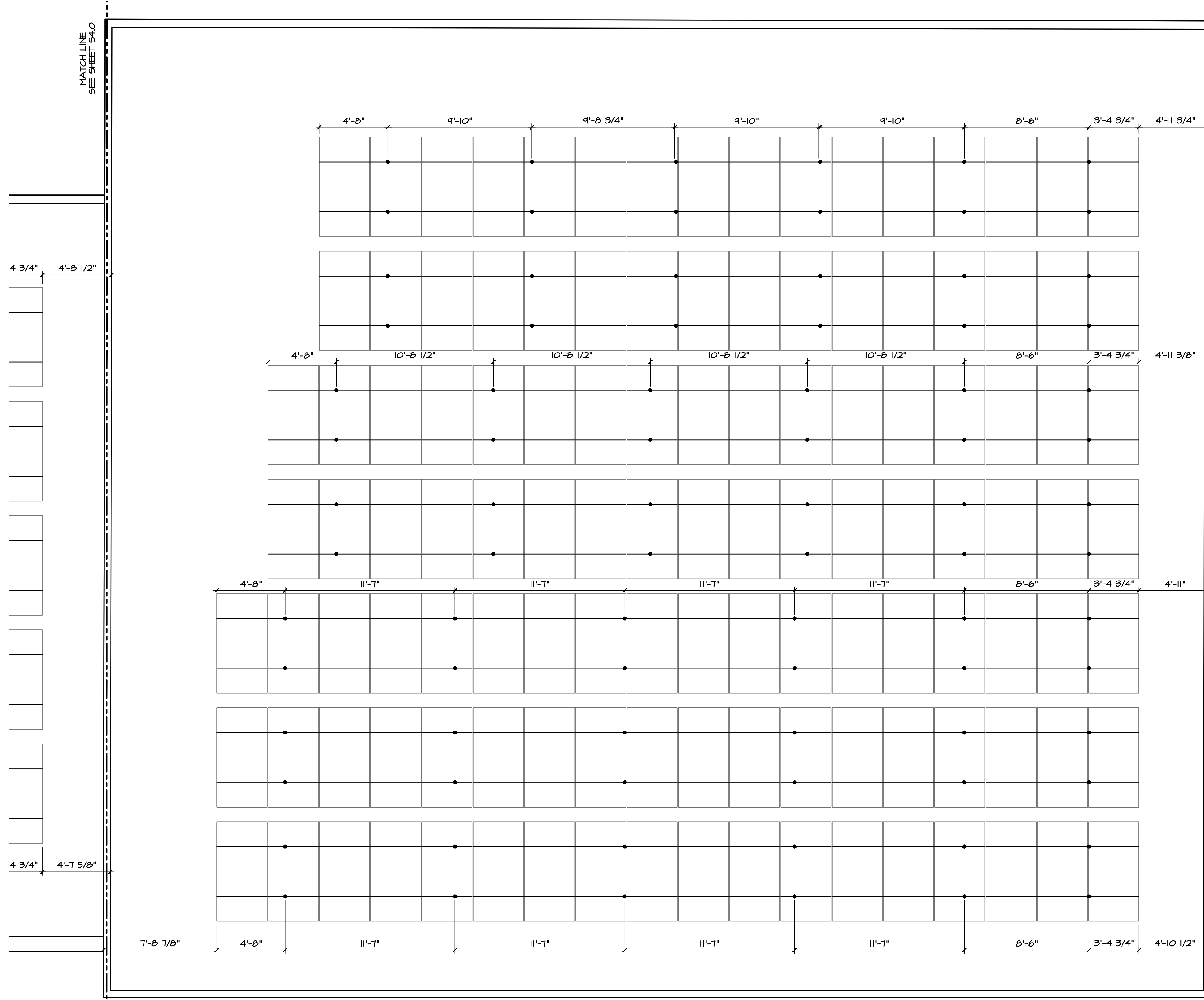
Starling Madison Lofquist, Inc.
 5224 S. 39th Street
 Phoenix, Arizona 85040
 (602) 438-2500
 fax: (602) 438-2505



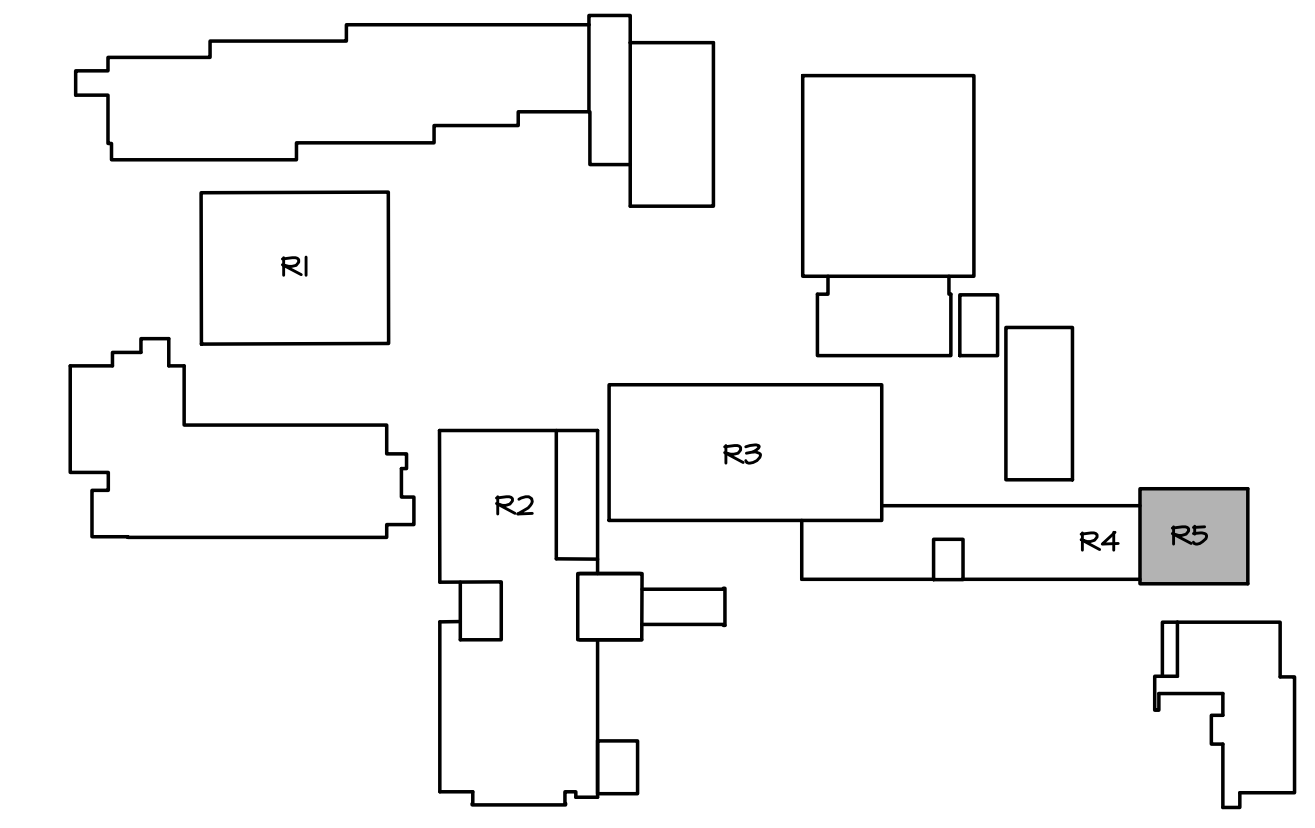
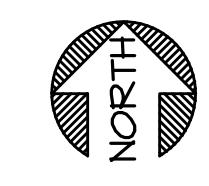
PRELIMINARY IF NOT SIGNED AND SEALED
 DESIGN BY: R.B. DRAWN BY: J.S. CHK. BY: D.H.
 065-13d

PV ARRAY - FLUSH MOUNT
 GLENDALE HIGH SCHOOL
 1440 E. BROADWAY
 GLENDALE, CA 91202

IRONRIDGE
 1495 ZEPHYR AVENUE
 HAYWARD, CA 94545



PARTIAL ROOF PLAN
 SCALE: 1/4"=1'-0"



KEY PLAN
 SCALE: N.T.S.

