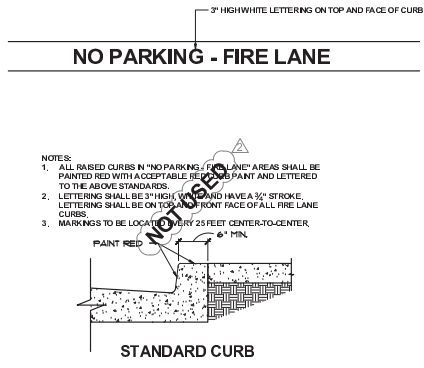
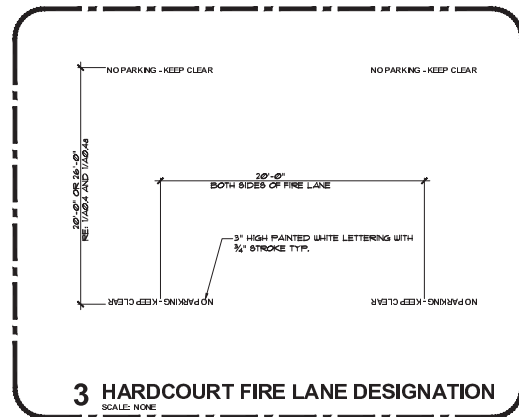


1 FIRE LANE STRIPING DETAIL
SCALE: NONE



2 FIRE LANE CURB
SCALE: NONE



3 HARD COURT FIRE LANE DESIGNATION
SCALE: NONE

ALL DETAILS ON THIS SHEET SHALL MEET OR EXCEED THE REQUIREMENTS AS SET FORTH BY THE CITY OF GLENDALE FIRE DEPARTMENT



ARCHITECTS & ENGINEERS STATE OF CALIFORNIA

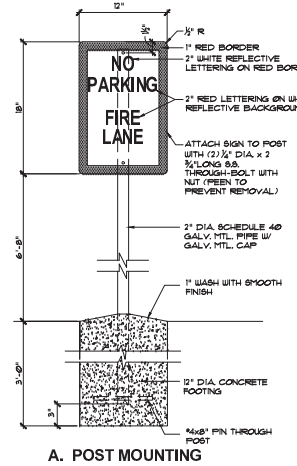
GLENDALE UNIFIED SCHOOL DISTRICT
SCHOOL DISTRICT
R. D. WHITE ELEMENTARY SCHOOL
NEW CLASSROOM BUILDING
141 EAST DORAN STREET, GLENDALE, CALIFORNIA



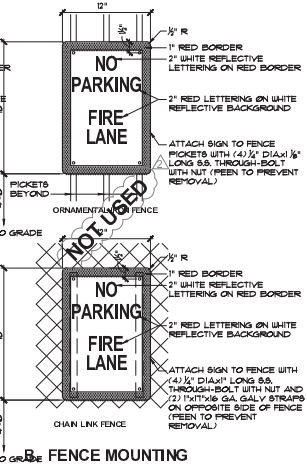
8816 Foothill Boulevard,
Suite 103-224
Rancho Cucamonga, CA 91730
AsstArchitect@chicheckered.com

Architecture PLLLP

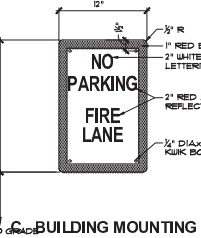
9
PHASE 2



A. POST MOUNTING

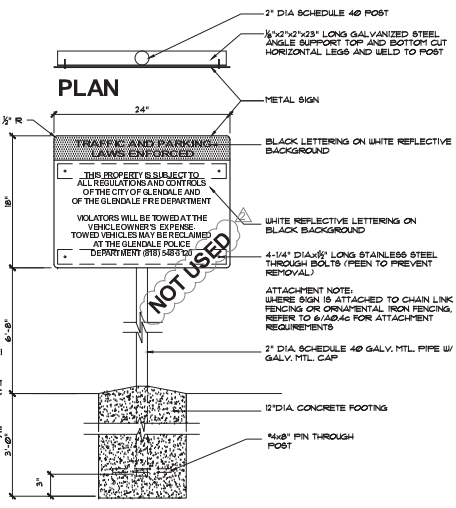


TO GRADE FENCE MOUNTING

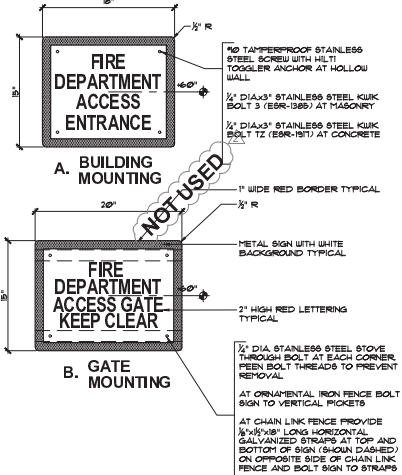


TO GRADE BUILDING MOUNTING

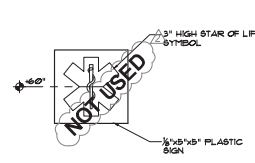
4 FIRE LANE SIGN
SCALE: 1 1/2" = 1'-0"
COMPLY WITH CITY OF GLENDALE FIRE DEPARTMENT STANDARDS



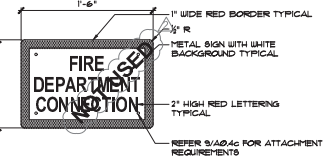
5 FIRE LANE ENTRANCE SIGN
SCALE: 1 1/2" = 1'-0"
COMPLY WITH CITY OF GLENDALE FIRE DEPARTMENT STANDARDS



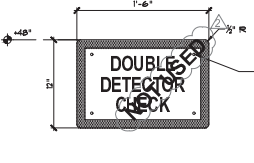
6 FIRE DEPARTMENT ACCESS SIGNS
SCALE: 1 1/2" = 1'-0"
COMPLY WITH CITY OF GLENDALE FIRE DEPARTMENT STANDARDS



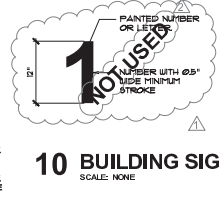
7 STAR OF LIFE SIGN
SCALE: 3" = 1'-0"



8 FDC SIGN
SCALE: 1 1/2" = 1'-0"



9 DDC SIGN
SCALE: 1 1/2" = 1'-0"



10 BUILDING SIGN
SCALE: NONE

THIS APPROVAL IS FOR ITEMS WITHIN CLAUDED AREAS ONLY. FOR OTHER INFORMATION NOT CONTAINED WITHIN CLAUDED AREAS, REFER TO ORIGINAL DSA APPROVED PLANS.
DO NOT USE THESE PLANS AS SUBSTITUTE FOR THE ORIGINAL DSA APPROVED PLANS.

REVISIONS

APPROVED
DIV. OF THE STATE ARCHITECT
LOS ANGELES BASIN REGIONAL OFFICE

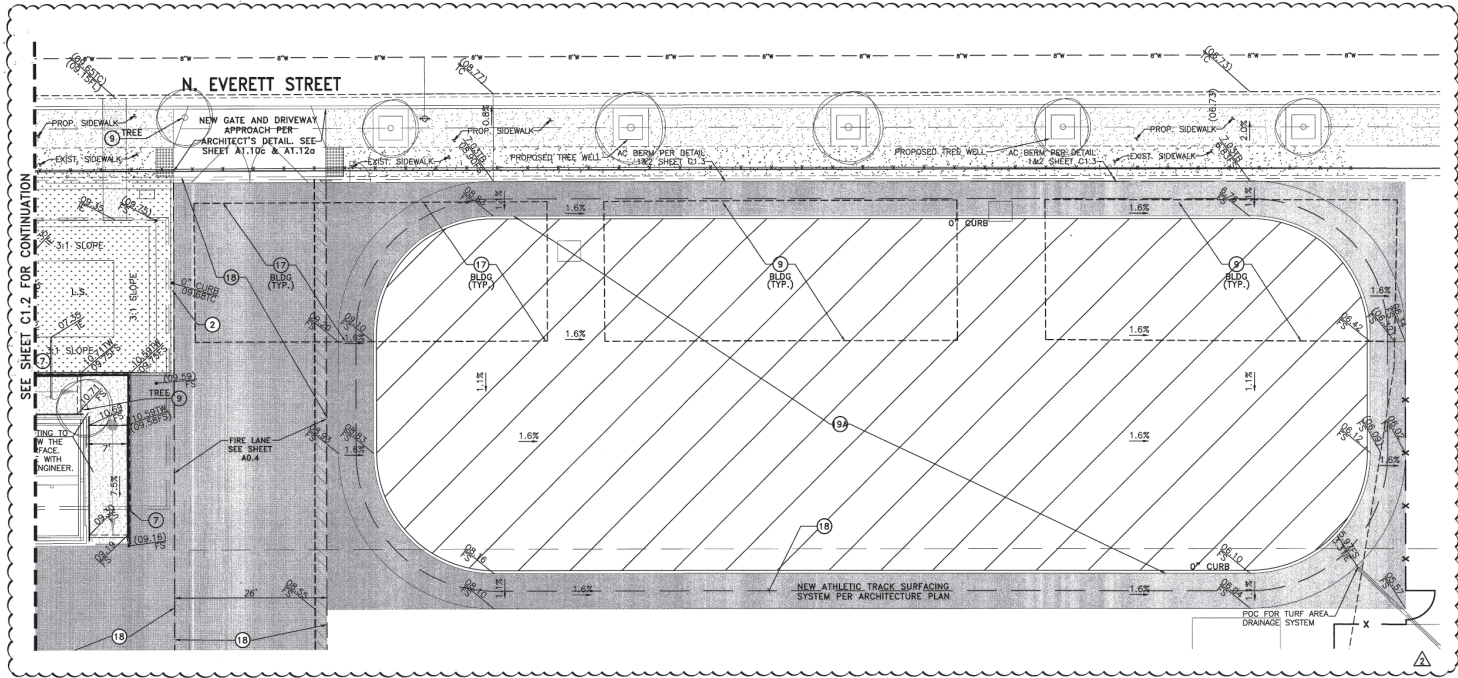
AC/AN FILE SS
APPL. NO. 03-114349 DATE: NOV 10 2015

DSA STAMP

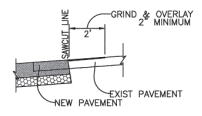
PROJECT NO.: 254801 DATE: 12-21-11
REVIS: 12-10-14
REVIS: 6-5-17

FIRE DEPARTMENT REQUIREMENTS - CITY OF GLENDALE SIGNAGE

A0.4c

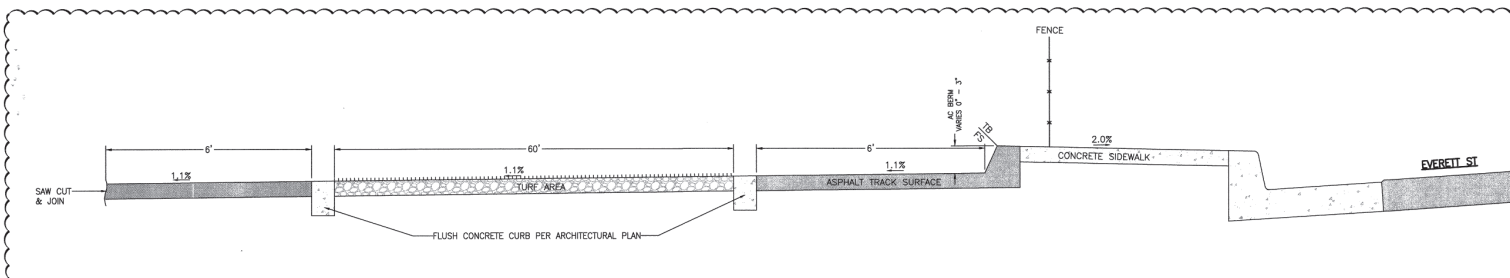


SEE SHEET C1.2 FOR CONTINUATION

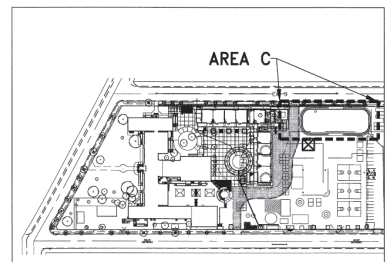


1 SAWCUT AND JOIN TYPICAL DETAIL
SCALE: NOT TO SCALE

AREA C ENLARGED DETAIL
SCALE: 1"=10'



2 ASPHALT BERM ALONG TURF AREA TYPICAL DETAIL
SCALE: NOT TO SCALE



HORIZONTAL CONTROL
A DIGITAL FILE CAN BE PROVIDED UPON REQUEST FOR HORIZONTAL CONTROL

LEGEND

PROP.	PROPOSED	FL	FLOW LINE
EXIS.	EXISTING	MIN	MINIMUM
TEMP.	TEMPORARY	MAX	MAXIMUM
FH	FIRE HYDRANT	TYP	TYPICAL
DCDA	DOUBLE CHECK DETECTOR ASSEMBLY	FG	FINISHED GROUND
A.C.	ASPHALTIC CONCRETE	FS	FINISHED SURFACE
A.B.	AGGREGATE BASE	R.L.	RIDGE LINE
P.C.C.	PORTLAND CONCRETE CEMENT	G.B.	GRADE BREAK
L.S.	LANDSCAPE	IE	INVERT ELEVATION
TC	TOP OF CURB	SUSMP	STANDARD URBAN STORMWATER MITIGATION PLAN
TG	TOP OF GRATE		
FF	FINISHED FLOOR		

[Symbol] = LANDSCAPE AREA
 [Symbol] = PORTLAND CONCRETE
 [Symbol] = ASPHALTIC CONCRETE
 [Symbol] = TURF AREA

- GRADING CONSTRUCTION NOTES**
- CONSTRUCT 6" P.C.C. WITH #3 @ 16" O.C. OVER 4" CLASS 2 AGGREGATE BASE. CONSTRUCT EXPANSION JOINTS 30' O.C. EW AND CONTROL JOINTS 10' O.C. EW. REFER TO SHEET 1/AD.4 FOR FIRE LANE DIMENSIONS AND AD.4A FOR FIRE LANE STRIPING AND SIGNAGE REQUIREMENTS.
 - CONSTRUCT 6" W X 12" D FLUSH CONCRETE CURB PER ARCHITECTURAL PLAN A1.2 SIM.
 - CONSTRUCT 4" THICK P.C.C. WITH 6X6-2 9X2.9 W/M. EXPANSION JOINTS TO BE 30' O.C. EW AND CONTROL JOINTS 10' O.C. EW. REFER TO DETAIL 1/AD.4 FOR AESTHETIC ENHANCEMENTS (SEE ARCHITECTURAL PLANS FOR AESTHETIC ENHANCEMENTS).
 - SAWCUT AND JOIN (0.1" MIN OVERLAY) PER DETAIL 1.
 - CONSTRUCT PLANTER WITH SEATING PER ARCHITECTURAL DETAILS.
 - FURNISH AND INSTALL BOLLARD PER ARCHITECTURAL SPECIFICATIONS.
 - RETAINING WALL (SEE STRUCTURAL PLANS FOR DETAILS).
 - CONSTRUCT RAILING PER ARCHITECTURAL DETAILS.
 - EXISTING ITEM, REMOVE COMPLETELY.
 - EXISTING ITEM, RELOCATED BY OTHERS.
 - EXISTING ITEM, RELOCATE AS INDICATED.
 - EXISTING ITEM, PROTECT IN PLACE.
 - EXISTING ITEM, ADJUST TO GRADE.
 - STORM DRAIN PER SHEET C2.1.
 - CONSTRUCT FLUSH TREE WELL PER ARCHITECTURAL PLANS.
 - CONSTRUCT CONCRETE BRICK PAVERS.
 - EXISTING BUILDING TO REMAIN FOR INTERIM HOUSING CONTRACTOR TO COMPLETE FIRE LANE LINER BUILDING AT COMPLETION OF CONSTRUCTION AFTER BUILDING IS REMOVED BY OTHERS.
 - INSTALL ASPHALTIC CONCRETE REFER TO ARCHITECTURAL & GEOTECHNICAL SPECIFICATION FOR THICKNESS.
 - REMOVED AND REPLACED CONCRETE.
 - CONSTRUCT NEW ARTIFICIAL TURF AREA WITH DRAINAGE SYSTEM AND FLUSH CONCRETE CURB PER MANUFACTURER'S RECOMMENDATION AND ARCHITECTURAL PLAN 1/AD.4.

DRAWN BY: **adkan ENGINEERS**
 Civil Engineering - Surveying - Planning
 6879 Airport Drive, Riverside, CA 92504
 Tel: (951) 508-0212 Fax: (951) 508-0989
 THIS APPROVAL IS FOR ITEMS WITHIN CLOUDED AREAS ONLY. FOR OTHER INFORMATION NOT CONTAINED WITHIN CLOUDED AREAS, REFER TO ORIGINAL DSA APPROVED PLANS.

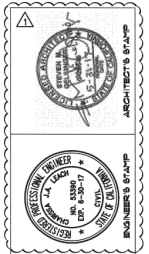
DO NOT USE THESE PLANS AS SUBSTITUTE FOR THE ORIGINAL DSA APPROVED PLANS.

APPROVED
 DIV. OF THE STATE ARCHITECT
 LOS ANGELES BASIN REGIONAL OFFICE

AC: [Signature] FLS: [Signature] SS: [Signature]
 APP# NO. 03-114360 DATE: NOV 09 2015
 DSA STAMP

PROJECT NO.: 254401	DATE: 02-25-14
REVISED DATE: 12.10.2014	
REVISED DATE: 07.16.2015	
CIVIL GRADING PLAN & DETAILS	

C1.3



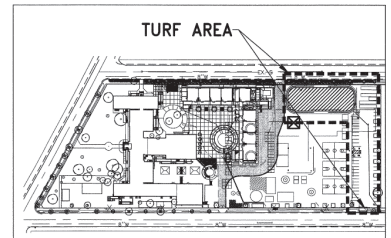
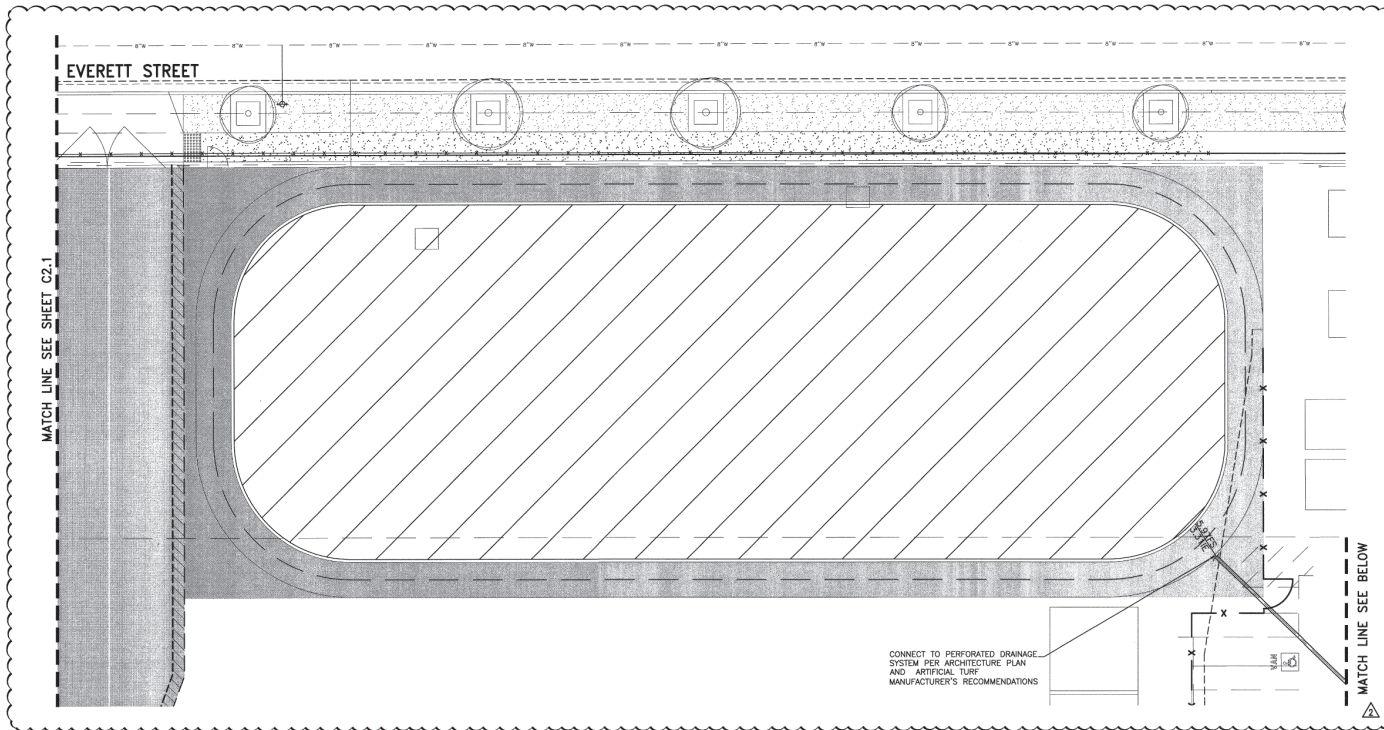
GLENDALE UNIFIED SCHOOL DISTRICT
R. D. WHITE ELEMENTARY SCHOOL
NEW CLASSROOM BUILDING



8816 Foothill Boulevard,
 Suite 103-224
 Rancho Cucamonga, CA 91730
 Alsocontact@architectad.com

Architecture PLLP
9

PHASE 2



HORIZONTAL CONTROL

A DIGITAL FILE CAN BE PROVIDED UPON REQUEST FOR HORIZONTAL CONTROL

LEGEND

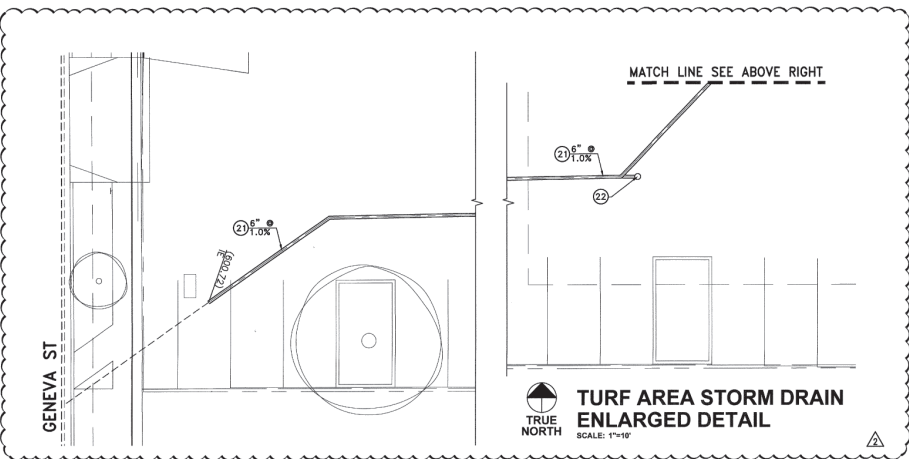
PROP.	PROPOSED	FL	FLOW LINE
EXIS.	EXISTING	MIN	MINIMUM
TEMP.	TEMPORARY	MAX	MAXIMUM
FI	FIRE HYDRANT	TYP	TYPICAL
DCDA	DOUBLE CHECK DETECTOR	FG	FINISHED GROUND
A.C.	ASPHALTIC CONCRETE	FS	FINISHED SURFACE
A.B.	AGGREGATE BASE	R.L.	RIDGE LINE
P.C.C.	PORTLAND CONCRETE CEMENT	G.B.	GRADE BREAK
L.S.	LANDSCAPE	IS	INVERT ELEVATION
TC	TOP OF CURB	SUSMP	STANDARD URBAN STORMWATER MITIGATION PLAN
TG	TOP OF GRATE		
FF	FINISHED FLOOR		

= LANDSCAPE AREA = ASPHALTIC CONCRETE
 = PORTLAND CONCRETE CEMENT = TURF AREA

STORM DRAIN CONSTRUCTION NOTES

- 1) CONNECT TO BUILDING STORM DRAIN. SEE PLUMBING PLANS SHEET P2.1
- 2) FURNISH AND INSTALL SDR-35 P.V.C. PIPE, SLOPE AND SIZE AS INDICATED
- 3) FURNISH AND INSTALL P.V.C. CLEANOUT PER DETAIL
- 4) FURNISH AND INSTALL AREA DRAIN PER DETAIL
- 5) FURNISH AND INSTALL BROOKS BOX CATCH BASIN (2474 SERIES) WITH RAFFIC RATED, HEEL PROOF, BOLT-DOWN STEEL GRATES (OR APPROVED EQUAL)
- 6) SEE WATER SHEET C3.1
- 7) CONSTRUCT PARKWAY DRAIN PER APWA STD. 151-1 (TYPE 2) SEE DETAIL
- 8) FURNISH AND INSTALL BRASS MITERED DRAIN PER DETAIL
- 9) FURNISH AND INSTALL KRISTAR FILTER (TYPE AS SHOWN) PER DETAIL
- 10) CONSTRUCT INFILTRATION BASIN PER DETAIL BELOW

TURF AREA STORM DRAIN ENLARGED DETAIL
SCALE: 1"=10'



TURF AREA STORM DRAIN ENLARGED DETAIL
SCALE: 1"=10'



**GLENDALE UNIFIED SCHOOL DISTRICT
R. D. WHITE ELEMENTARY SCHOOL
NEW CLASSROOM BUILDING**



Architecture PLLP
9
8846 Foothill Boulevard,
Suite 103-224
Rancho Cucamonga, CA 91730
A3conline@architectures.com

DESIGNED BY:
adkan ENGINEERS
Civil Engineering - Surveying - Planning
6879 Airport Drive, Riverside, CA 92504
Tel: (951) 888-0241 Fax: (951) 888-0599

THIS APPROVAL IS FOR ITEMS WITHIN CLOUDED AREAS ONLY. FOR OTHER INFORMATION NOT CONTAINED WITHIN CLOUDED AREAS, REFER TO ORIGINAL DSA APPROVED PLANS.

DO NOT USE THESE PLANS AS SUBSTITUTE FOR THE ORIGINAL DSA APPROVED PLANS.
REVISED

APPROVED
DIV. OF THE STATE ARCHITECT
LOS ANGELES BASIN REGIONAL OFFICE

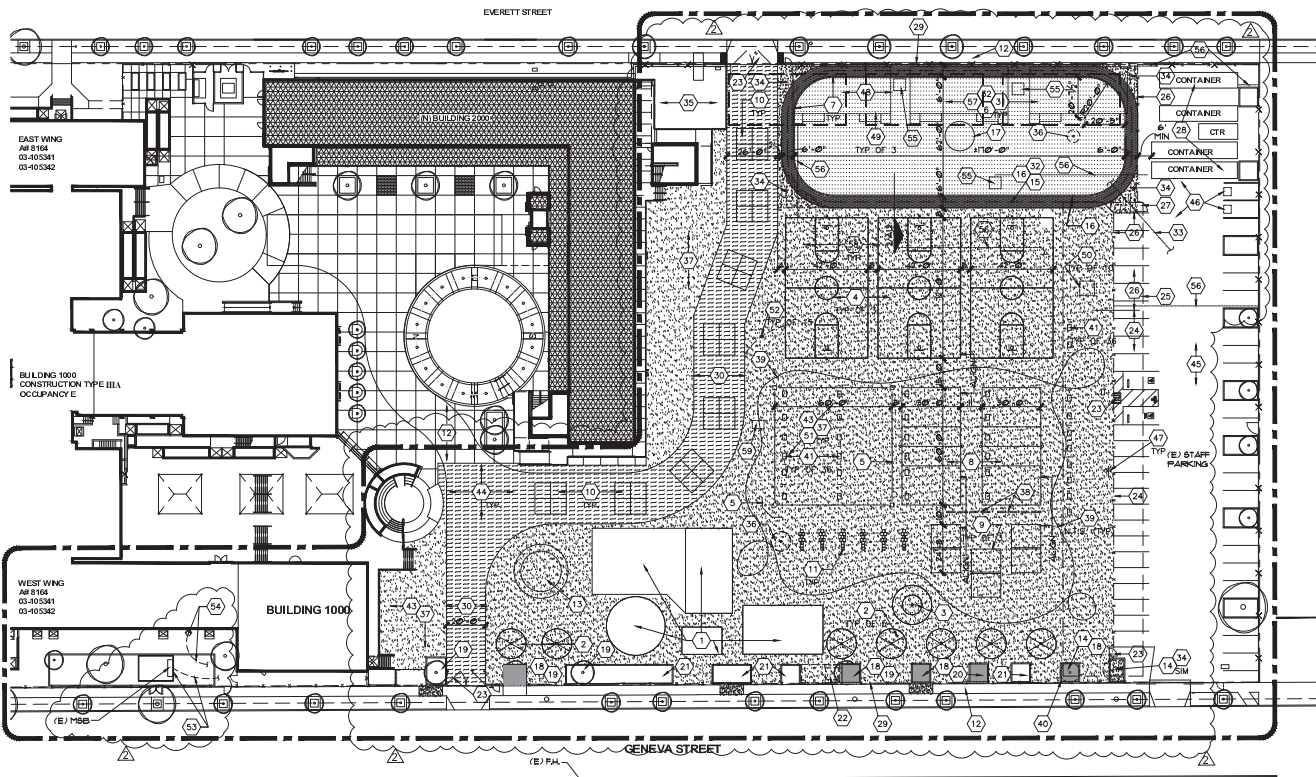
APPL. NO. 03-114340 DATE: NOV 09 2015
DSA STAMP

PROJECT NO. : 254801	DATE: 02-25-14
REVISED DATE	12.10.2014
REVISED DATE	07.16.2015

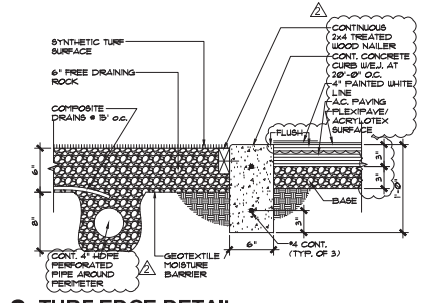
CIVIL STORM DRAIN PLAN

C2.3

PHASE 2



1 HARDCOURT LAYOUT PLAN
SCALE: 1" = 30'-0"
TRUE NORTH



2 TURF EDGE DETAIL
SCALE: 1/4" = 1'-0"

LEGEND:

[Pattern]	NEW ARTIFICIAL TURF
[Pattern]	NEW PLEXIPAVE SURFACE
[Pattern]	NEW ASPHALT PAVING REPAIR, CRACK FILLER, SEAL COATS AND RESTRIP
[Pattern]	NEW ASPHALT PAVING
[Pattern]	NEW FIRE LANE ASPHALT PAVING
[Pattern]	NEW 6'-0" CHAINLINK FENCE

KEYNOTES: NOTE: NOT ALL KEYNOTES MAY BE USED ON THIS SHEET.

- EXISTING APPARATUS AREAS TO REMAIN
- EXISTING TETHERBALL TO REMAIN, REPAINT STRIPING-RE: 7A1
- EXISTING BALL BASKET TO REMAIN, REPAINT POST & STRIPING
- NEW BASKETBALL COURT AND STRIPING, RE: 3A1
- NEW CHAIN LINK BACKSTOP, PAINTED 12" SQ. YELLOW BASES AND 4" WHITE FIELD LINES
- NEW ARTIFICIAL TURF WITH DRAINAGE SYSTEM, RE: 2A1.2, C1.3 & C2.3
- NEW CONTINGENTS FLUSH CONCRETE CURBS, RE: 2A1.2
- NEW VOLLEYBALL STRIPING, REMOVABLE POSTS AND SLEEVES, RE: 2A1.2
- NEW CHAIN LINK WALL, PAINT PURPLE, RE: 5A1.100
- NEW FOUR SQUARE COURT, RE: 6A1
- NEW HORSESHOE COURT, RE: 6A1
- EXISTING CONCRETE PAVING TO REMAIN
- NEW CIRCLES COURT, RE: 1A1
- REMOVE EXISTING TREE AND GRIND STUMP
- NEW 4" PAINTED WHITE LINE AT BOTH OUTSIDE EDGES AND WITH 4" PAINTED WHITE DASHED LINE IN CENTER
- NEW PLEXIPAVE / ACRYL/OTEX SURFACE (COLOR: PURPLE) ON NEW 3" ASPHALT PAVING OVER 3" AGGREGATE BASE, RE: 2A1.2
- NEW 15' DIA. PAINTED SCHOOL LOGO, RE: 4A1.20
- NEW ARTIFICIAL TURF WITHOUT DRAINAGE SYSTEM, RE: 2A1.2 SM
- EXISTING TREE TO REMAIN
- REMOVE EXISTING BRICK AND AGGREGATE BASE
- EXISTING ARTIFICIAL TURF TO REMAIN
- REMOVE EXISTING ABANDONED SWITCHGEAR CABINET, CONCRETE PAD AND CHAINLINK FENCE, ADD NEW ASPHALT PAVING
- EXISTING GATE TO REMAIN
- EXISTING C. L. FENCE TO REMAIN
- FUTURE PHOTOVOLTAIC PANELS, N.I.C.
- NEW 6"x11" CHAINLINK FENCE, RE: A1.11
- NEW 3"x11" CHAINLINK GATE WITH LOCKING HARDWARE SET RE: A1.11
- RE-GRUP EXISTING CARGO CONTAINERS AS SHOWN
- EXISTING DISCONTINUOUS METAL FENCE TO REMAIN
- NEW 6" RED FIRE LANE STRIPING, RE: 1.1A0.4c
- NEW IRRIGATION, RE: L2.A
- REMOVE EXISTING ASPHALT PAVING, AGGREGATE BASE AND SOLIAS REQUIRED TO PROVIDE MIN. 6" DEPTH FOR NEW WORK, RE: 2A1.2
- NEW SYNDRAIN, RE: C2.3
- NEW 3" ASPHALT PAVING AS REQUIRED DUE TO NEW CONSTRUCTION
- EXISTING LANDSCAPE AREA TO REMAIN
- REMOVE EXISTING BALL DROP GAME POST, INFILL HOLE
- REPAIR, CRACK FILLER, SEAL COATS AND RE-STRIP EXISTING ASPHALT PAVING
- REMOVE EXISTING WOOD BALL WALL, INFILL HOLES, FIELD VERIFY LOCATIONS
- NEW 3"x11" PLEXIPAVE/ACRYL/OTEX SURFACE WITH PLEXICHROME ADDITIVE (COLOR: PURPLE)
- WITH 4" W PAINT WHITE LINE ON EACH OUTSIDE EDGE
- NEW 6" W CONCRETE CURB TO MATCH EXISTING, RE: 5A1.100
- NEW 3"x11" x 12" H PAINTED YELLOW 4-DIGIT NUMBER AND LINE, FIELD VERIFY LOCATIONS, TYP OF 36, RE: 8A1
- EXISTING ASPHALT PAVING TO REMAIN
- REMOVE AND REPAIR EXISTING ASPHALT CRACKS GREATER THAN 1" AND ALL HEAVY ASPHALT (600 SFS), FIELD VERIFY LOCATIONS
- REMOVE EXISTING ASPHALT PAVING AND BASE, COMPACT SUBGRADE 12" WITH NEW 3" ASPHALTIC CONCRETE OVER 6" AGGREGATE BASE, RE: GEOTECHNICAL REPORT
- EXISTING PARKING LOT TO REMAIN, NO WORK EXCEPT AS NOTED
- BLACKOUT BLUE LINES AND ACCESSIBLE SYMBOLS, PAINT 4" WHITE PARKING STALL LINES
- REMOVE EXISTING BASKETBALL GOAL POSTS, INFILL HOLES, TYP OF 6, FIELD VERIFY LOCATIONS
- NEW ASPHALT BEAM, RE: 2C1.3
- EXISTING (3) 32 X 60" MODULAR BUILDINGS TO BE REMOVED BY OTHERS
- REMOVE EXISTING CONCRETE FOUNDATION, RAMPS, CURBS, RAILINGS, CHAIN LINK FENCE, AND PLANTS. CAP ALL UTILITIES BELOW GRADE
- REMOVE / SCAPE EXISTING ASPHALT 6" (X) 10' (X) 10' TRANSITION LANDINGS, TYP OF 10
- BLACKOUT ALL EXISTING LINES
- REMOVE EXISTING TEMPORARY POWER POLES, DATA, AND ELECTRICAL CABLEING, REPAIR ASPHALT PAVING, FIELD VERIFY LOCATION
- DISCONNECT TEMPORARY POWER CABLEING AT EXISTING MSB AND RETURN CABLE TO DISTRICT
- DISCONNECT TEMPORARY DATA CABLEING AT EXISTING WEATHER HEAD, CAP AND RETURN CABLE TO DISTRICT
- REMOVE EXISTING ELECTRICAL TRANSFORMER AND CONCRETE PAD, FIELD VERIFY LOCATION
- REMOVE EXISTING CHAIN LINK FENCE AND/OR GATE, PATCH PAVING, FIELD VERIFY LOCATIONS
- REMOVE AND CAP ALL EXISTING IN-GROUND UTILITY BOXES, TYP OF 12, FIELD VERIFY LOCATIONS
- REMOVE ALL EXPOSED TEMPORARY PLUMBINGS AND CAP BELOW GRADE, PATCH ASPHALT PAVING, FIELD VERIFY LOCATIONS
- ADD ASPHALT TO EXISTING HOLE

THIS APPROVAL IS FOR ITEMS WITHIN CLOUDED AREAS ONLY. FOR OTHER INFORMATION NOT CONTAINED WITHIN CLOUDED AREAS, REFER TO ORIGINAL USA APPROVED PLANS.

DO NOT USE THESE PLANS AS SUBSTITUTE FOR THE ORIGINAL USA APPROVED PLANS.

REVISED

APPROVED
DIV. OF THE STATE ARCHITECT
LOS ANGELES BASIN REGIONAL OFFICE

AD [Signature] FLR [Signature] SS [Signature]

APPL. NO. 03-114340 DATE: NOV 09 2015

DSA STAMP

PROJECT NO.: 254801

DATE: 12-11-11
REVISED: 12-10-14
REVISED: 6-17

HARDCOURT LAYOUT PLAN

CCD 70B

A1.2

PHASE 2

ARCHITECTURE PLLP

8816 Foothill Boulevard,
Suite 103-224
Rancho Cucamonga, CA 91730
Acontact@architecture9.com

9

GLENDALE UNIFIED SCHOOL DISTRICT

GLENDALE UNIFIED SCHOOL DISTRICT

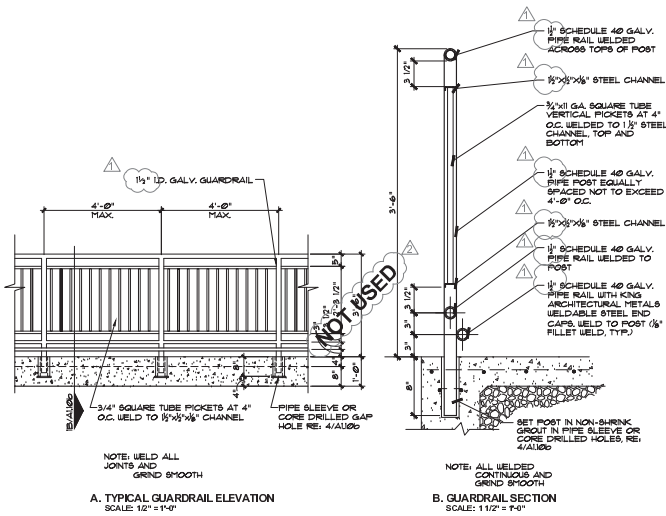
R.D. WHITE ELEMENTARY SCHOOL

NEW CLASSROOM BUILDING

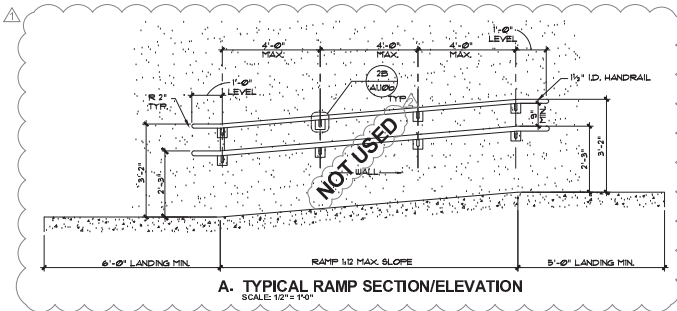
144 EAST DORAN STREET, GLENDALE, CALIFORNIA

ENGINEER'S STAMP

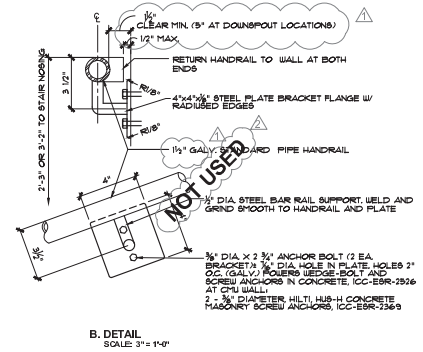
ARCHITECT'S STAMP



1 TYPICAL GUARDRAIL DETAIL
SCALE: VARIES



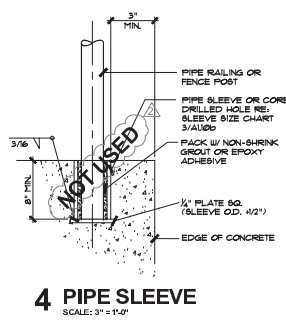
2 RAMP RAILING AT WALL CONDITION
SCALE: VARIES



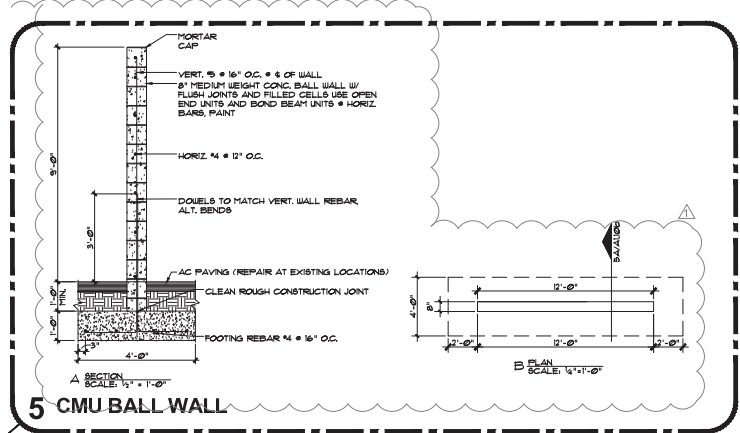
PIPE SLEEVE SIZE CHART

RAILING / PIPE POST		PIPE SLEEVE				
WEIGHT CLASS SCHED. NO.	NOMINAL DIAMETER	O. D.	WT. / SCHED.	I. D.	NOMINAL DIAMETER CLEARANCE I.D. SLEEVE - O.D. POST (INCHES)	
STD. WT. SCHED. 40	1-1/4"	1.660	EX. STRONG SCHED. 80	2.067	2"	0.407
STD. WT. SCHED. 40	1-1/4"	1.660	EX. STRONG SCHED. 80	1.939	2"	0.279
STD. WT. SCHED. 40	1-1/2"	1.900	EX. STRONG SCHED. 80	2.323	2-1/2"	0.423
STD. WT. SCHED. 40	2"	2.375	EX. STRONG SCHED. 80	2.900	3"	0.525
STD. WT. SCHED. 40	2-1/2"	2.875	EX. STRONG SCHED. 80	3.364	3-1/2"	0.489
STD. WT. SCHED. 40	3"	3.300	EX. STRONG SCHED. 80	4.026	4"	0.526
STD. WT. SCHED. 40	3-1/2"	4.000	EX. STRONG SCHED. 80	4.813	5"	0.813
STD. WT. SCHED. 40	4"	4.300	EX. STRONG SCHED. 80	5.047	5"	0.547
STD. WT. SCHED. 40	5"	5.383	EX. STRONG SCHED. 80	6.065	6"	0.582
STD. WT. SCHED. 40	6"	6.625	EX. STRONG SCHED. 80	7.625	8"	1.000
STD. WT. SCHED. 40	8"	8.625	EX. STRONG SCHED. 80	9.750	10"	1.125
STD. WT. SCHED. 40	10"	10.750	EX. STRONG SCHED. 80	11.750	12"	1.000

3 PIPE SLEEVE SIZE CHART
REFER TO ASTM A53, TABLE X2.2 FOR DIMENSIONS AND SIZES OF PIPE.



4 PIPE SLEEVE
SCALE: 3" = 1'-0"



5 CMU BALL WALL

AREA OF NEW WORK

THIS APPROVAL IS FOR ITEMS WITHIN CLAUDED AREAS ONLY. FOR OTHER INFORMATION NOT CONTAINED WITHIN CLAUDED AREAS, REFER TO ORIGINAL DSA APPROVED PLANS.
DO NOT USE THESE PLANS AS SUBSTITUTE FOR THE ORIGINAL DSA APPROVED PLANS.

REVISED

APPROVED
DIV. OF THE STATE ARCHITECT
LOS ANGELES BASIN REGIONAL OFFICE

APPL. NO. 03-114340 DATE: **NOV 09 2015**

DSA STAMP

PROJECT NO.: 254801 DATE: 12-21-11
REVIS: 12-10-14
REVIS: 6-5-17

SITE DETAILS-HANDRAILS & BALL WALL

A1.10b



ARCHITECTS & STAMP

GLENDALE UNIFIED SCHOOL DISTRICT
R.D. WHITE ELEMENTARY SCHOOL
NEW CLASSROOM BUILDING
141 EAST DORAN STREET GLENDALE, CALIFORNIA

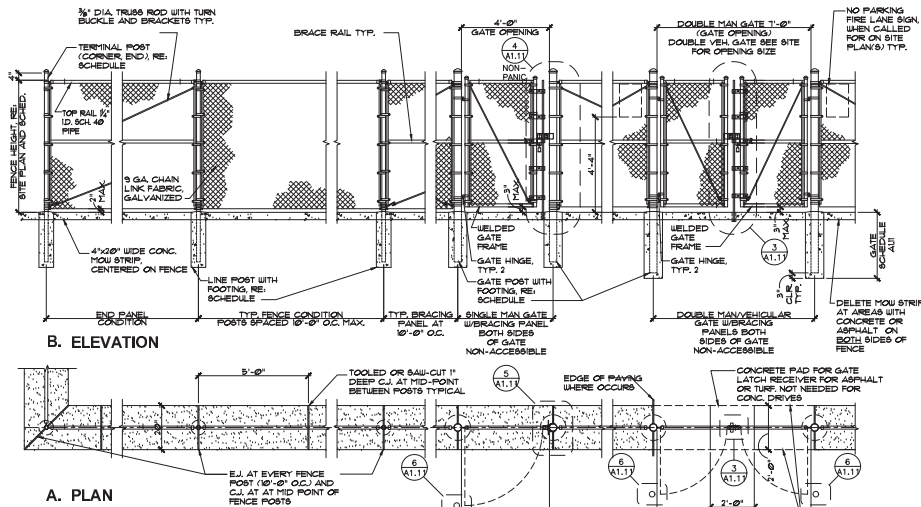


8806 Foothill Boulevard,
Suite 103-224
Rancho Cucamonga, CA 91730
AsstArchitect@architectures.com

Architecture PLLLP

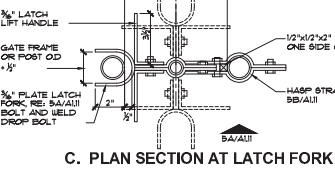
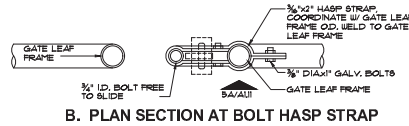
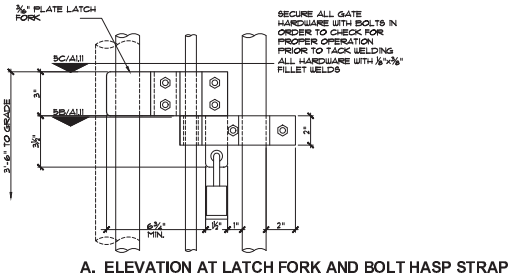
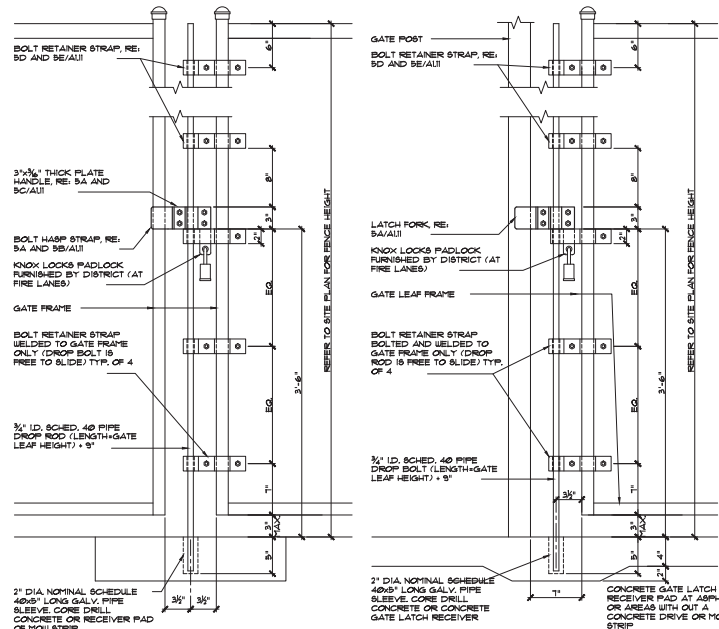
9

PHASE 2



1 TYPICAL CHAIN LINK FENCE
SCALE: 3/8" = 1'-0"

NOTE:
WHERE REQUIRED FOR GATES WITH
PANIC HARDWARE, REFER TO SHEET
A111a



5 GATE LATCH DETAILS
SCALE: 3" = 1'-0"

FENCE SCHEDULE

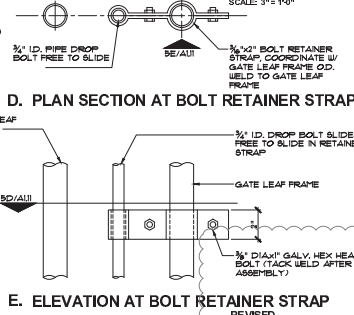
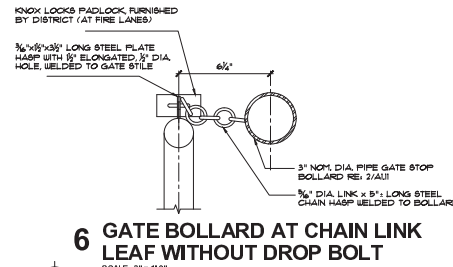
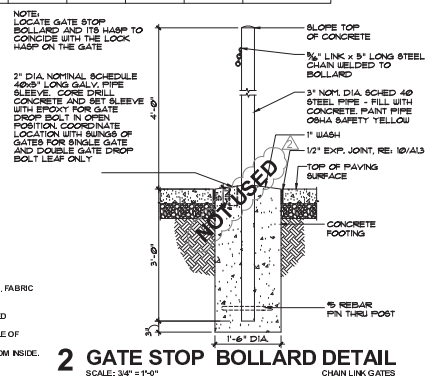
FENCE HEIGHT	TERMINAL POST SIZE			LINE POST SIZE			FOOTING SIZE		REQUIRED CENTER RAIL	REQUIRED DIAGONAL BRACING	FABRIC TENSION BANDS AT TERM. POST (QUANTITY)	
	DIA. (O.D.)	NOMINAL (I.D.)	HEIGHT	DIA. (O.D.)	NOMINAL (I.D.)	HEIGHT	DIA. (LINE POST)	DEPTH				
4'-0"	2.875"	2.5"	6'-4"	2.375"	2"	2'-2"	10"	8"	2'-0"	NO	NO	3
6'-0"	2.875"	2.5"	8'-7"	2.375"	2"	8'-4"	10"	8"	2'-6"	NO	NO	5
7'-0"	3.5"	3"	9'-10"	2.875"	2.5"	9'-4"	12"	10"	2'-9"	NO	YES	6
8'-0"	3.5"	3"	11'-4"	2.875"	2.5"	10'-2"	12"	10"	3'-0"	NO	YES	7
10'-0"	4.5"	4"	13'-2"	3.5"	3"	13'-4"	16"	12"	3'-6"	NO	YES	9
12'-0"	4.5"	4"	16'-4"	3.5"	3"	15'-2"	16"	12"	4'-0"	YES	YES	10

GATE SCHEDULE

GATE (FENCE) HEIGHT	GATE LEAF WIDTH	GATE POST SIZE			FOOTING SIZE	
		DIA. (O.D.)	NOMINAL (I.D.)	HEIGHT	DIA.	DEPTH
4'-0"	OR LESS	2.375"	2"	FENCE HT. + 2'-2"	10"	2'-6"
6'-0"	OVER 4'-0" TO 10'-0"	2.875"	2.5"	FENCE HT. + 3'-1"	12"	3'-0"
	OVER 10'-0" TO 18'-0"	4.0"	3.5"	FENCE HT. + 3'-1"	14"	3'-0"
	4'-0" OR LESS	3.5"	3.068"	FENCE HT. + 3'-1"	10"	3'-0"
7'-0"	OVER 6'-0" TO 10'-0"	4.0"	3.5"	FENCE HT. + 3'-1"	12"	3'-0"
10'-0"	OVER 10'-0" TO 18'-0"	6.625"	6"	FENCE HT. + 3'-2"	16"	3'-6"

GENERAL CHAIN LINK FENCE NOTES

1. ALL CHAIN LINK COMPONENTS TO MEET TO EXCEED ASTM STANDARDS.
2. ALL FENCE AND GATE COMPONENTS SHALL BE HOT-DIP GALVANIZED. GATE TO BE GALVANIZED AFTER ASSEMBLY. FABRIC TO BE GALVANIZED AFTER MANUFACTURE.
3. ALL FENCE FABRIC SHALL BE GALVANIZED AFTER WOVEN.
4. TRUSS BRACE ROD SHALL BE FABRICATED FROM 5/16" DIA. MIN. MERCHANT QUALITY ROD AND IT AND ALL RELATED DEVICES SHALL BE HOT-DIP GALVANIZED PER ASTM F696 (2003).
5. TRUSS ROD ATTACHED TO TERMINAL POSTS WITH ROD ASSEMBLY. TRUSS ROD AND ASSEMBLY SHALL BE CAPABLE OF WITHSTANDING A TENSION OF 2000 LBS.
6. POST, LINE CAPS AND RAIL ENDS SHALL BE DESIGNED TO FIT SNUGLY OVER POSTS AND EXCLUDE MOISTURE FROM INSIDE.
7. MOUV STRIP SHALL BE 20" WIDE EXPANSION JOINT AT EVERY LINE POST 10'-0" O.C., CONTROL JOINTS AT 7'-0" O.C.
8. SPOT WELD ALL BOLTED GATE HARDWARE. LINE RAIL ADJUSTERS TO MAINTAIN ALIGNMENT.
9. MAN GATES TO COMPLY WITH CBC 1003.3.1 REQUIREMENTS FOR DOORS.



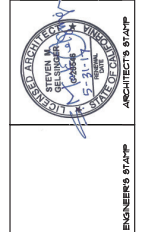
THIS APPROVAL IS FOR ITEMS WITHIN CLOUDED AREAS ONLY. FOR OTHER INFORMATION NOT CONTAINED WITHIN CLOUDED AREAS, REFER TO ORIGINAL DSA APPROVED PLANS.
DO NOT USE THESE PLANS AS SUBSTITUTE FOR THE ORIGINAL DSA APPROVED PLANS.

PROJECT NO.: 254801 DATE: 12-21-11
DATE: 12-10-14
REVISED: 6-5-17

CHAIN LINK FENCE AND GATE DETAILS

A111

APPROVED
DIV. OF THE STATE ARCHITECT
LOS ANGELES BASIN REGIONAL OFFICE
AC 111 FL 1 SS 1
APPL NO. 03-114340 DATE: 12/9/2015
DSA STAMP



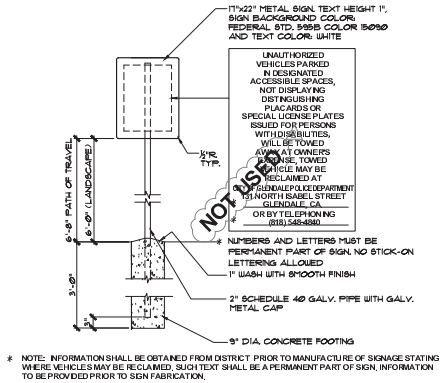
GLENDALE UNIFIED SCHOOL DISTRICT
SCHOOL DISTRICT
R.D. WHITE ELEMENTARY SCHOOL
NEW CLASSROOM BUILDING
14451 EAST DORAN STREET, GLENDALE, CALIFORNIA
ARCHITECTS & ENGINEERS



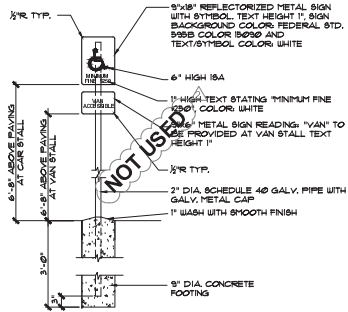
8816 Foothill Boulevard,
Suite 103-224
Rancho Cucamonga, CA 91730
Acontract@architect.com

Architecture PLLLP

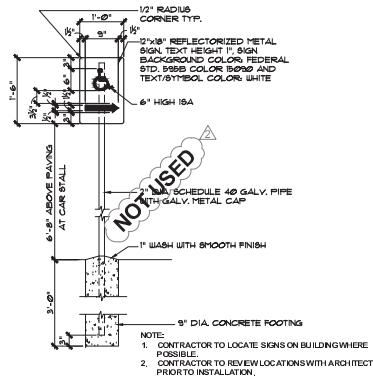
9
PHASE 2



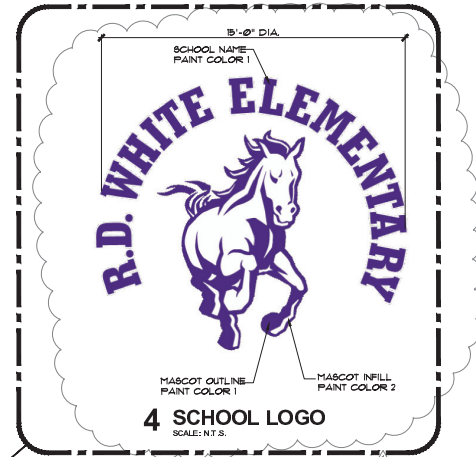
1 TOW AWAY SIGN
SCALE: 3/4" = 1'-0"



2 ACCESSIBLE PARKING STALL SIGN
SCALE: 3/4" = 1'-0"



3 PATH SIGN
SCALE: 3/4" = 1'-0"



AREA OF NEW WORK

NOTE: THE MINIMUM CHARACTER HEIGHT FOR ALL SIGNS 6'-0" ABOVE PAVING FINISH ELEVATION SHALL BE 3" U.O.N. (CBC 11178 24)

SIGN FASTENING GENERAL NOTES:

- ATTACH METAL SIGNS TO POSTS WITH 2-1/4" DIA. X 23/4" LONG GALVANIZED THROUGH BOLTS WITH WASHERS (BOTH ENDS) AND NUTS. PROVIDE 2BOLTS MINIMUM AT EACH SIGN.
- PEEN EXPOSED BOLTS THREADS TO PREVENT SIGN REMOVAL.

THIS APPROVAL IS FOR ITEMS WITHIN CLAUDED AREAS ONLY. FOR OTHER INFORMATION NOT CONTAINED WITHIN CLAUDED AREAS, REFER TO ORIGINAL DSA APPROVED PLANS.

DO NOT USE THESE PLANS AS SUBSTITUTE FOR THE ORIGINAL DSA APPROVED PLANS.

REVISED

APPROVED
DIV. OF THE STATE ARCHITECT
LOS ANGELES BASIN REGIONAL OFFICE

AC: *[Signature]* FLS: *[Signature]* SS: *[Signature]*

APPL NO. 03-114340 DATE: NOV 6 9 2014
DSA STAMP

PROJECT NO.: 254 801 DATE: 12-21-11
REVISED: 12-10-14
REVISED: 6-5-17

SITE SIGNAGE DETAILS

A1.20

ARCHITECTS & ENGINEERS REGISTERED PROFESSIONAL ARCHITECTS & ENGINEERS STATE OF CALIFORNIA

ARCHITECTS STATE OF CALIFORNIA

ENGINEERS STATE OF CALIFORNIA

GLENDALE UNIFIED SCHOOL DISTRICT
R.D. WHITE ELEMENTARY SCHOOL
NEW CLASSROOM BUILDING
144 EAST DORAN STREET GLENDALE, CALIFORNIA

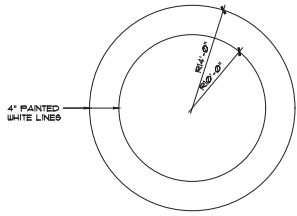
GLENDALE UNIFIED SCHOOL DISTRICT

8806 Foothill Boulevard,
Suite 103-224
Rancho Cucamonga, CA 91730
Acontractor@chitecture.com

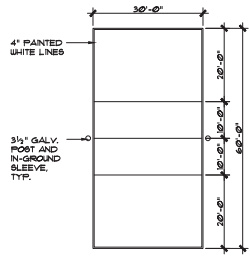
Architecture PLLLP

9

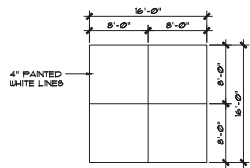
PHASE 2



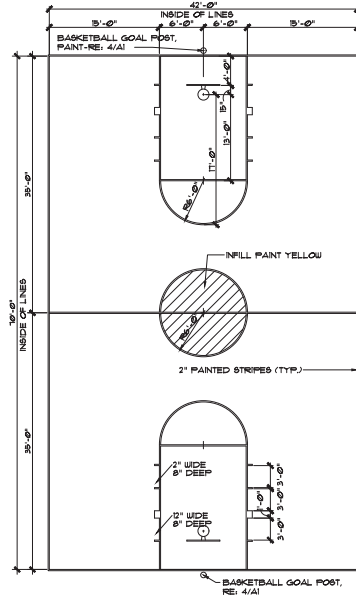
1 CIRCLE COURT
SCALE: 1/8" = 1'-0"



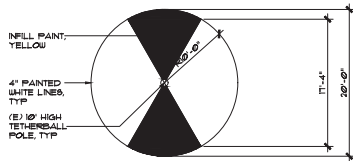
2 VOLLEYBALL COURT
SCALE: 1/16" = 1'-0"



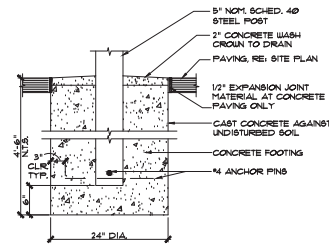
6 4 SQUARE COURT
SCALE: 1/8" = 1'-0"



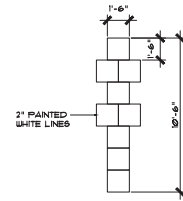
3 BASKETBALL COURT
SCALE: 1/8" = 1'-0"



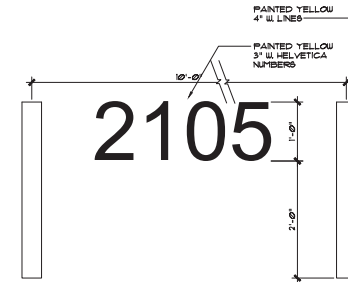
7 TETHERBALL COURT
SCALE: 1/8" = 1'-0"



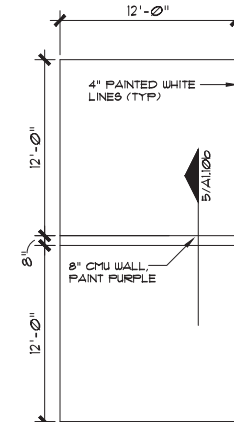
4 BASKETBALL GOAL POST DETAIL
SCALE: 1" = 1'-0"



5 HOPSCOTCH COURT
SCALE: 1/4" = 1'-0"



8 NUMBERS
SCALE: 1" = 1'-0"



9 BALL WALL COURT
SCALE: 1/4" = 1'-0"



ARCHITECTS & STAFF

ENGINEERS & STAFF

**GLENDALE UNIFIED
SCHOOL DISTRICT
R.D. WHITE ELEMENTARY SCHOOL
NEW CLASSROOM BUILDING**
144 EAST DORAN STREET, GLENDALE, CALIFORNIA



8816 Foothill Boulevard,
Suite 103-224
Rancho Cucamonga, CA 91730
Asoffice@architect9.com

Architecture
PLLLP
9

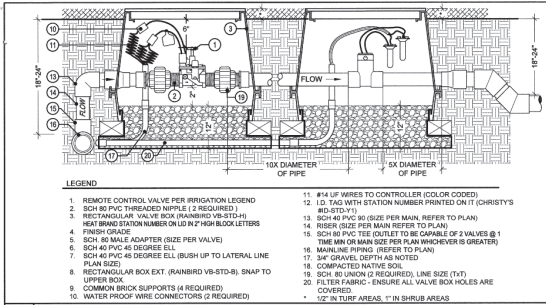
PROJECT NO.: 254801 DATE: 6-6-17

SITE DETAILS / PAVEMENT MARKINGS

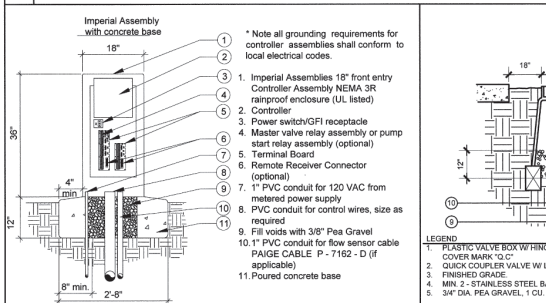
NEW SHEET

A1

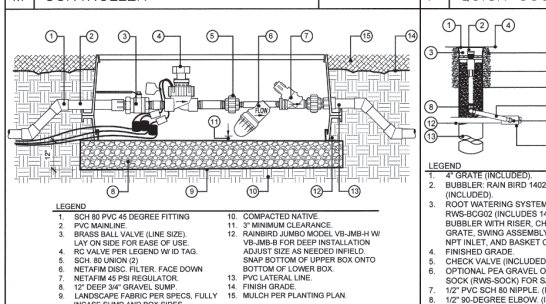
PHASE 2



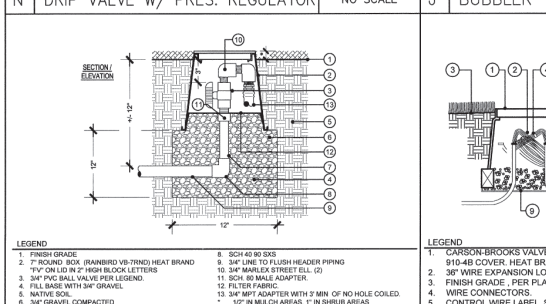
L MASTER VALVE AND FLOW SENSOR NO SCALE



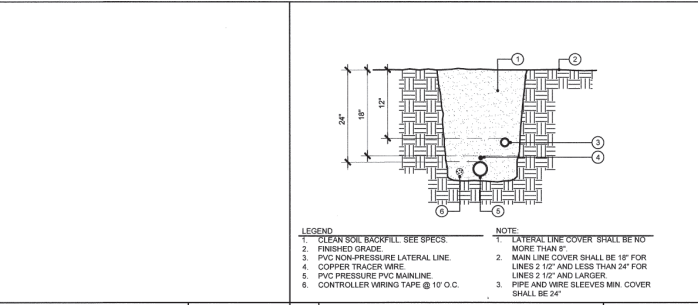
M CONTROLLER NO SCALE



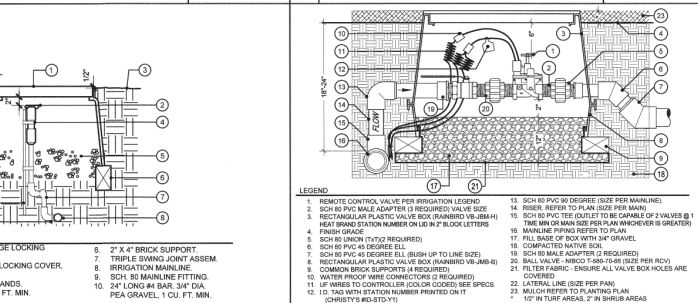
N DRIP VALVE W/ PRES. REGULATOR NO SCALE



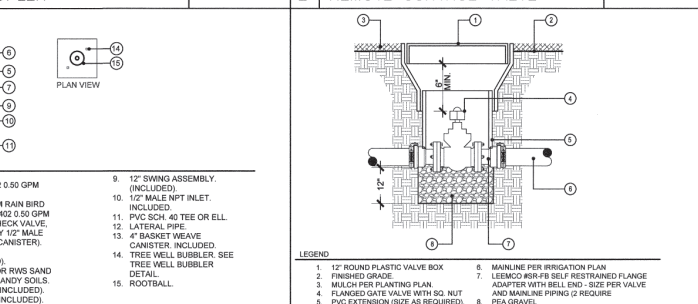
O FLUSH VALVE NO SCALE



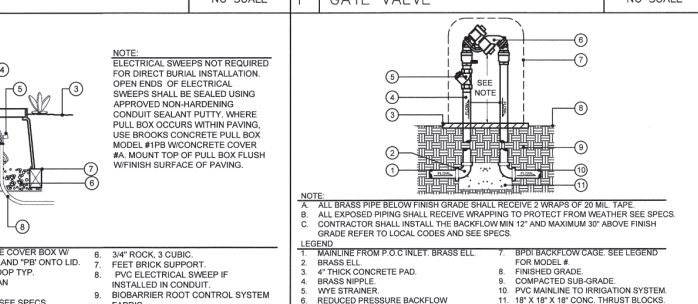
D TRENCHING NO SCALE



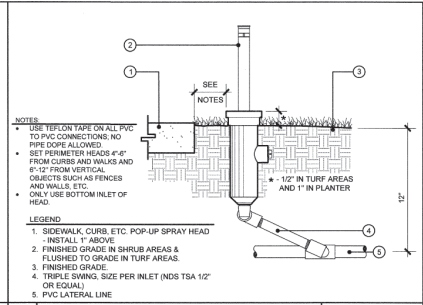
I QUICK COUPLER NO SCALE



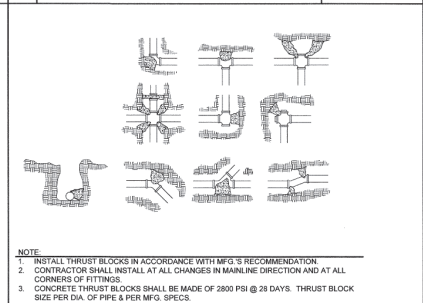
E REMOTE CONTROL VALVE NO SCALE



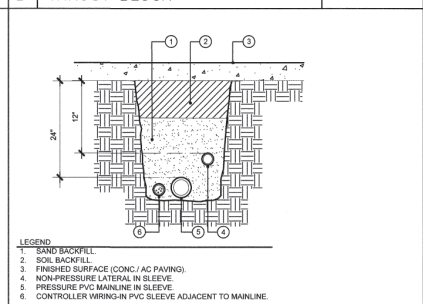
J BUBBLER NO SCALE



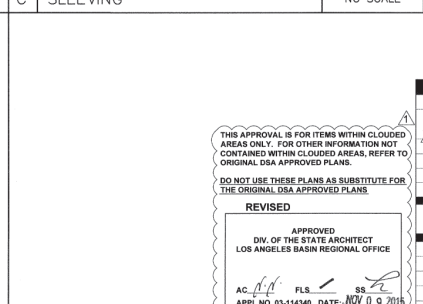
A POP-UP NO SCALE



B THRUST BLOCK NO SCALE



F GATE VALVE NO SCALE



C SLEEVING NO SCALE

L MASTER VALVE AND FLOW SENSOR NO SCALE

D TRENCHING NO SCALE

A POP-UP NO SCALE

M CONTROLLER NO SCALE

E REMOTE CONTROL VALVE NO SCALE

B THRUST BLOCK NO SCALE

N DRIP VALVE W/ PRES. REGULATOR NO SCALE

J BUBBLER NO SCALE

F GATE VALVE NO SCALE

O FLUSH VALVE NO SCALE

K PULL BOX NO SCALE

G REDUCED PRESSURE BACKFLOW NO SCALE

L MASTER VALVE AND FLOW SENSOR NO SCALE

D TRENCHING NO SCALE

A POP-UP NO SCALE

M CONTROLLER NO SCALE

E REMOTE CONTROL VALVE NO SCALE

B THRUST BLOCK NO SCALE

N DRIP VALVE W/ PRES. REGULATOR NO SCALE

J BUBBLER NO SCALE

F GATE VALVE NO SCALE

O FLUSH VALVE NO SCALE

K PULL BOX NO SCALE

G REDUCED PRESSURE BACKFLOW NO SCALE



GLENDALE UNIFIED SCHOOL DISTRICT
 R.D. WHITE ELEMENTARY SCHOOL
 NEW CLASSROOM BUILDING
 141 EAST GORDAN STREET, GLENDALE, CALIFORNIA



INTEGRATED DESIGN GROUP, LLP
 15000 Vanowen Street, Suite 100
 Van Nuys, California 91411
 818.709.9888

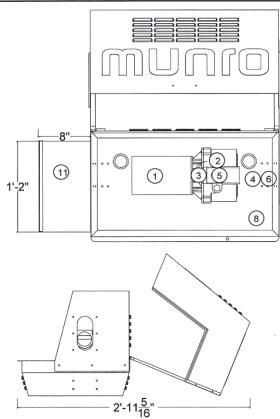
Architecture PLLP
 8846 Foothill Boulevard,
 Suite 103-224
 Rancho Cucamonga, CA 91730
 Rancho@architecture9.com

PROJECT NO.: 254801 DATE: 12-21-11
 DRAWN BY: JV REVISIONS: 08-14-15
 CHECKED BY: BMP
 SCALE: N.T.S.
 LANDSCAPE IRRIGATION DETAILS

NEW SHEET
 12.2

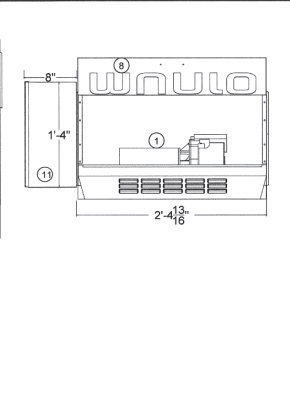
THIS APPROVAL IS FOR ITEMS WITHIN CLOUDED AREAS ONLY. FOR OTHER INFORMATION NOT CONTAINED WITHIN CLOUDED AREAS, REFER TO ORIGINAL DSA APPROVED PLANS.
 DO NOT USE THESE PLANS AS SUBSTITUTE FOR THE ORIGINAL DSA APPROVED PLANS.
 REVISION
 APPROVED
 DIV. OF THE STATE ARCHITECT
 LOS ANGELES BASIN REGIONAL OFFICE
 AC: _____ FLS: _____ SS: _____
 APR. NO. 03-11440 DATE: NOV 0 9 2010
 DSA STAMP

PHASE 2 (NOT ALL DETAILS MAY BE USED)

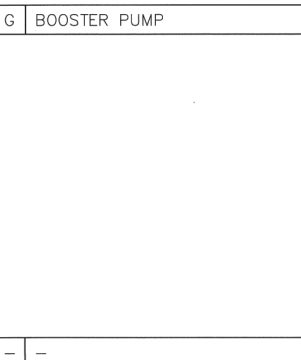


BOOSTER PUMP SYSTEM (MODEL: SCULISSIMPLICITY70VFD OR EQUIV.) MANUFACTURED BY MUNRO SYSTEMS, GRAND JUNCTION, COLORADO 81505-2208

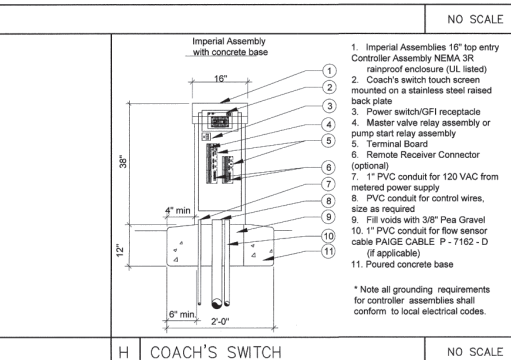
- A. Pump assembly:**
- Performance requirements: The pump and drive motor shall be capable of operating satisfactorily under the full range of conditions from shut-off through run-out. Motors shall be non-overloading throughout the range of operation.
 - The pump shall be of the horizontal end section self-priming centrifugal type back-suction design with flow and head defined in the attached technical specification. The horizontal pump shall be manufactured according to the standards of the Hydraulic Institute and to ANSI specification number, HSI-1. The pump casing shall be ASTM A8. Cast iron iron capable of hydraulic test @ 150% of maximum discharge. All castings shall have a regular fit to ensure alignment.
 - The impeller shall be brass. Completely machined on all outside surfaces and dynamically balanced at the time of pump assembly. The impeller shall be keyed to the shaft and securely fastened with a vibration resistant lock screw and washer.
 - The mechanical seal shall be a Type 1 design with silica carbon vs. silica carbon faces and Viton elastomer. Mechanical seal shall be installed on a bronze or stainless steel sleeve.
 - The pump and motor shall be connected by an ASTM A8, Class 30, and cast iron bracket incorporating a full isolating shaft with dual slinger rings to prevent rotation from causing the float motor bearing.
 - Pump shall be able to provide a 55 gpm flow @ 30 gallons per minute. Motor shall be a 3hp, 3ph, 208, and 240V 3 phase incoming pressure is 3/4" pig and maintaining 92 pig in irrigation system.
- B. Motors:**
- All motors shall be built in accordance in the latest NEMA, IEEE, ANSI and AFMA standards where applicable. The motor shall have Class F insulation with a temperature rise as specified by NEMA. Motor leads shall be terminated in a connection box and shall be clearly identified.
 - The motor shall be equipped with adequate bearings that are locally available and have minimum life of at the design condition of 40,000 hours. The motor shall be designed for access the line starting. Motors shall be DOD, 1 phase, 60 cycle, and 230/240 volt. Motors shall be non-overloading throughout the complete pump curve.
- D. Piping:**
- Sanction Piping shall be schedule 40 PVC or OTHER or heavier as required to maintain a 3 to 1 pressure safety factor. All piping shall be hydraulically tested to 150% of maximum discharge pressure. Piping between pumping system shall have 2" thick lining. Piping between system discharges shall have a flexible rubber hose with can



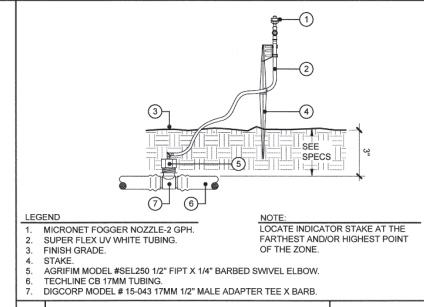
#	Description
1	55psig@30gpm three phase 208, with 37psig incoming
2	Isolation Valve Pressure Transducer 0-150 & Pressure Gauge 0-160
3	2" Check
4	Isolation Valve & Pressure Gauge incoming 4" x 2"
5	2" Hose with quick couplers
6	1-1/2" Quick-coupler on suction
7	NOT USED
8	Stainless Steel Enclosure with shield Pwd Coated
9	Not Used
10	Not Used
11	Variable Frequency Drive with 16 x 14 x 8 Panel Nema 3r



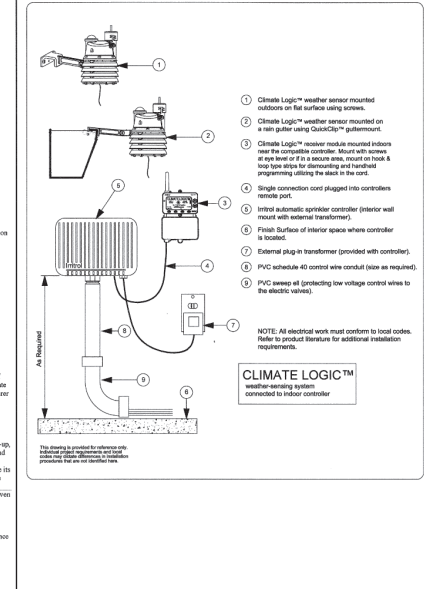
G BOOSTER PUMP NO SCALE



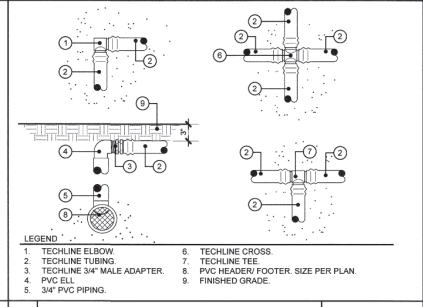
H COACH'S SWITCH NO SCALE



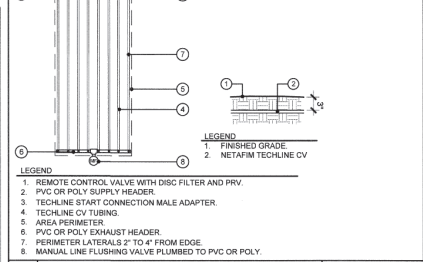
D	INDICATOR STAKE	NO SCALE
---	-----------------	----------



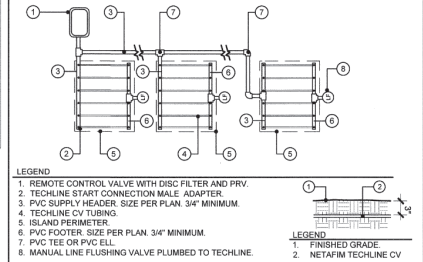
E CLIMATE LOGIC WEATHER SENSOR NO SCALE



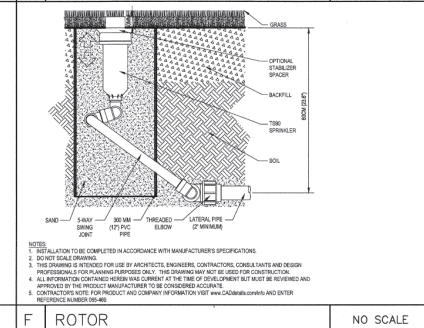
A	DRIP START CONNECTION	NO SCALE
---	-----------------------	----------



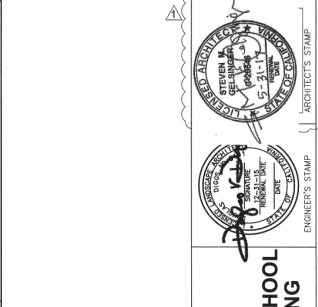
B	DRIP END FEED	NO SCALE
---	---------------	----------



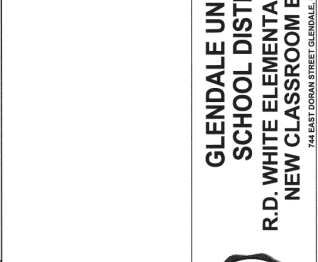
C DRIP ISLAND LAYOUT NO SCALE



F ROTOR NO SCALE



A	DRIP START CONNECTION	NO SCALE
---	-----------------------	----------



B	DRIP END FEED	NO SCALE
---	---------------	----------



C DRIP ISLAND LAYOUT NO SCALE

INTEGRATED DESIGN GROUP, LLP
 8815 Foothill Boulevard,
 Suite 102-224
 Rancho Cucamonga, CA 91730
 AAccount@igarchitects.com

Architecture PLLLP

PROJECT NO.: 254801 DATE: 12-21-11
 DRAWN BY: [Signature] CHECKED BY: BMP
 SCALE: 1"=10'-0" REVISED: 08-14-15
LANDSCAPE IRRIGATION DETAILS
NEW SHEET
12.3

THIS APPROVAL IS FOR ITEMS WITHIN CLOUDED AREAS ONLY. FOR OTHER INFORMATION NOT CONTAINED WITHIN CLOUDED AREAS, REFER TO ORIGINAL DSA APPROVED PLANS.
 DO NOT USE THESE PLANS AS SUBSTITUTE FOR THE ORIGINAL DSA APPROVED PLANS.

REVISIONS:
 APPROVED
 DIV. OF THE STATE ARCHITECT
 LOS ANGELES BASIN REGIONAL OFFICE
 AC: [Signature] FLS: [Signature] SS: [Signature]
 APP# NO. 03-114340 DATE: NOV. 9. 2015
 DSA STAMP

GLENDALE UNIFIED SCHOOL DISTRICT
 R.D. WHITE ELEMENTARY SCHOOL
 NEW CLASSROOM BUILDING
 742 EAST JORDAN STREET, GLENDALE, CALIFORNIA

PHASE 2 (NOT ALL DETAILS MAY BE USED)