



Balboa Elementary School  
1844 Bel Aire Drive, Glendale, CA 91201

DESIGNER



837 North Spring Street / Third Floor / Los Angeles, CA 9002  
Telephone (323) 959 3100 / Fax (323) 959 3100

CONSULTANTS

CIVIL ENGINEER  
BREIN ENGINEERING  
STRUCTURAL ENGINEER  
KPFF CONSULTING ENGINEERS  
MECHANICAL / PLUMBING / ELECTRICAL ENGINEER  
BREIN ENGINEERING  
FIRE PROTECTION ENGINEER  
BREIN ENGINEERING

DOOR HARDWARE CONSULTANT  
ARCHITECTURAL HARDWARE SERVICES

REGISTRATION



AGENCY APPROVAL

IDENTIFICATION STAMP  
DIVISION OF STATE ARCHITECT  
OFFICE OF REGULATION SERVICES  
FILE NO. 19-41  
APPL. NO. 03-116363  
AC \_\_\_\_\_ FL'S \_\_\_\_\_ SS \_\_\_\_\_  
DATE \_\_\_\_\_

ISSUE

03-21-17 CCDA-005

MARK DATE DESCRIPTION

DESIGNER PROJECT NO: A11047.05

DRAWN BY: Author

CHECKED BY: Checker

SCALE: As indicated

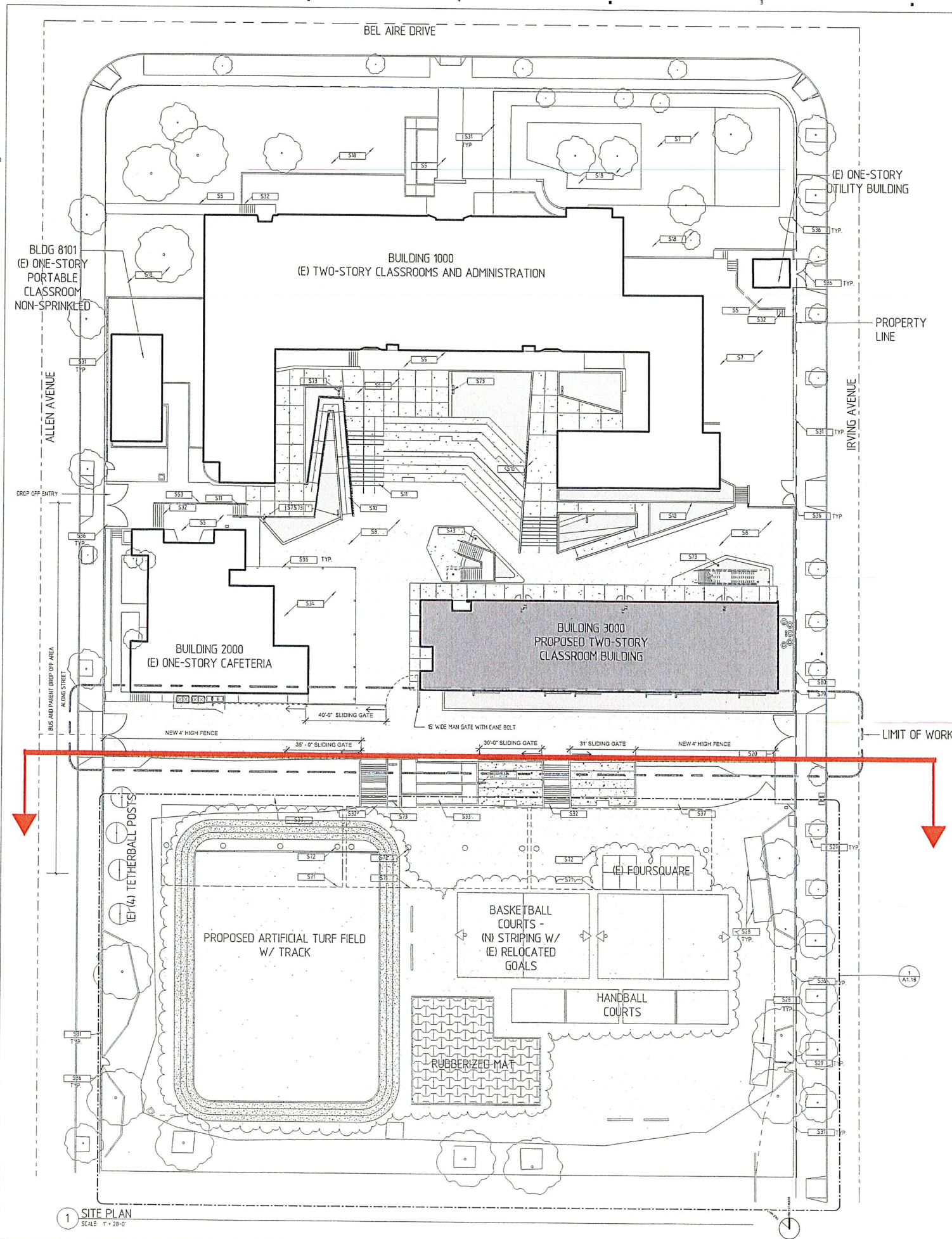
KEY PLAN

SHEET TITLE

SITE PLAN

SHEET NUMBER

A1.11



LEGEND

- EXISTING BUILDING
- NEW BUILDING
- CONCRETE PAVING
- EXISTING A/C PAVING
- A/C PAVING
- PLANTING AREA
- ARTIFICIAL TURF
- ATHLETIC SURFACE COATING
- RUBBERIZED TILE SURFACING
- LIMIT OF WORK

KEYNOTE

KEY	TEXT	KEY	TEXT
S5	(E) CONCRETE PAVING	S36	(E) GATE
S6	CONCRETE PAVING	S37	(E) ASPHALT BEEM
S7	(E) ASPHALT PAVING	S38	(E) GUARDRAIL
S8	ASPHALT PAVING	S39	(E) PV CANOPY
S10	CONCRETE RAMP	S72	(E) STEEL COLUMN/CONCRETE BASE
S11	CONCRETE STAIRS SEE 1/S500	S73	(E) POLE-MOUNTED SITE LIGHT, SEE S/A121 AND E-10
S18	(E) PLANTING AREA	S79	CHAINLINK FENCE
S20	(E) 20'-0" WIDE SWINGING GATE, DETAIL 2/A121	S80	CONCRETE RETAINING WALL SEE WALL TYPE RL 4/S500
S28	(E) STORAGE CONTAINER		
S29			
S31	(E) CHAIN LINK FENCE		
S32	(E) CONCRETE STAIRS		
S33	(E) CONCRETE RAMP		
S34	(E) LUNCH SHELTER		
S35	(E) COLUMN		

1 SITE PLAN  
SCALE: 1" = 20'-0"



Balboa Elementary School  
1844 Bel Aire Drive, Glendale, CA 91201

DESIGNER



837 North Spring Street / Third Floor / Los Angeles, CA 90012  
Telephone (323) 859 3100 / Fax (323) 859 3100

CONSULTANTS

CIVIL ENGINEER  
BREIN ENGINEERING  
STRUCTURAL ENGINEER  
KPFF CONSULTING ENGINEERS  
MECHANICAL / PLUMBING / ELECTRICAL ENGINEER  
BREIN ENGINEERING  
FIRE PROTECTION ENGINEER  
BREIN ENGINEERING  
DOOR HARDWARE CONSULTANT  
ARCHITECTURAL HARDWARE SERVICES

REGISTRATION



AGENCY APPROVAL

IDENTIFICATION STAMP  
DIVISION OF STATE ARCHITECT  
OFFICE OF REGULATION SERVICES  
FILE NO. 16-41  
APPL NO. 03-11-1363  
AC FL S SS  
DATE

ISSUE

03-29-17 CCD-035

MARK DATE DESCRIPTION

DESIGNER PROJECT NO.: A11047.05

DRAWN BY: Author

CHECKED BY: Checker

SCALE: As indicated

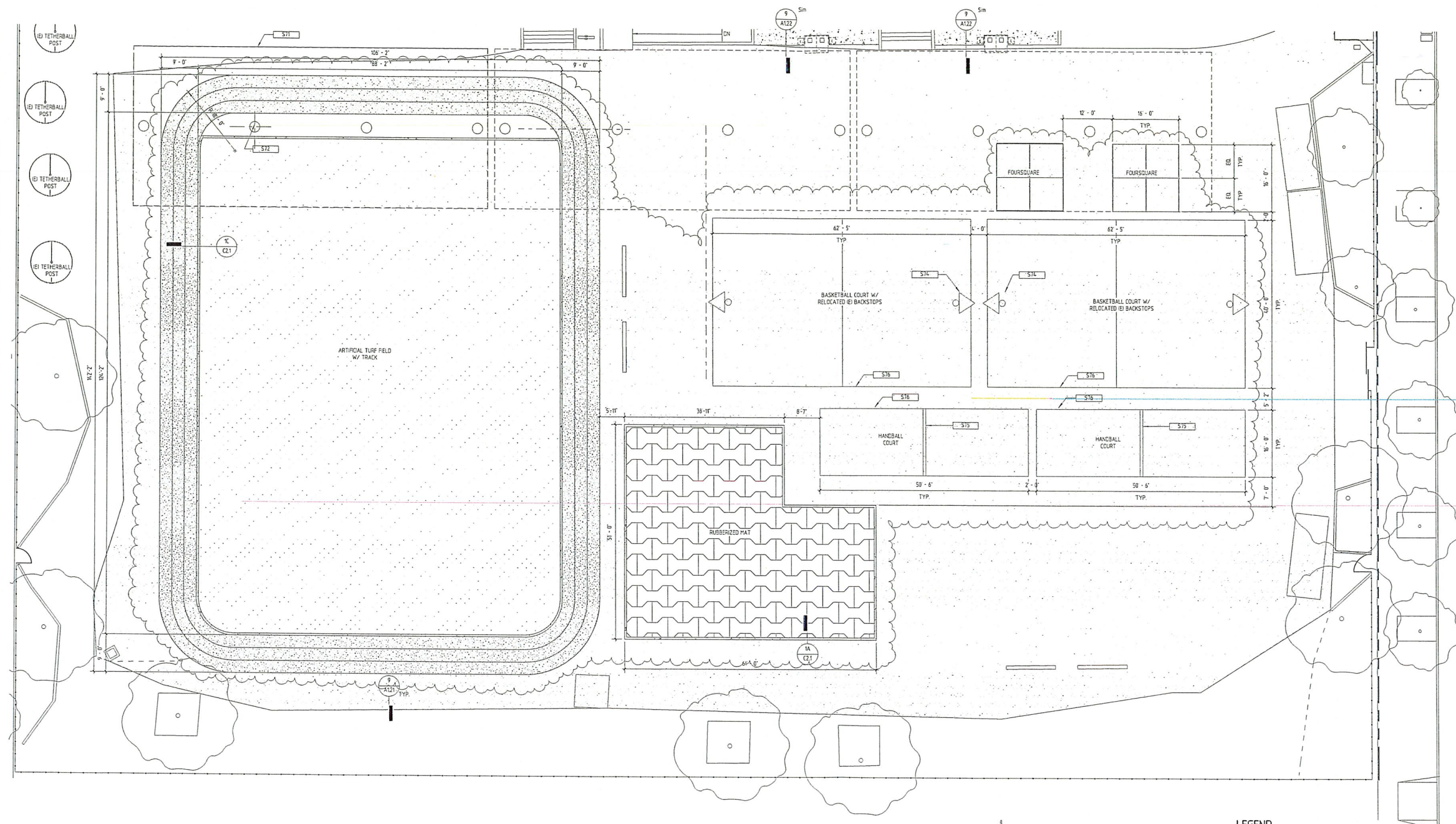
KEY PLAN

SHEET TITLE

PARTIAL SITE PLAN @ FIELD

SHEET NUMBER

A1.16



1 ENLARGED SITE PLAN @ FIELD  
SCALE: 1" = 10'-0"

KEYNOTES

KEY	TEXT
S11	(E) PV CANOPY
S12	(E) STEEL COLUMN/CONCRETE BASE
S14	RELOCATED (E) BASKETBALL BACKSTOP & GOAL (SEE 6/A121 FOR FOUNDATION DETAIL)
S15	HANDBALL COURT WALL. SEE 7/A121
S16	PAVEMENT STRIPING

LEGEND

	EXISTING BUILDING
	NEW BUILDING
	CONCRETE PAVING
	EXISTING A/C PAVING
	A/C PAVING
	PLANTING AREA
	ARTIFICIAL TURF
	ATHLETIC SURFACE COATING
	RUBBERIZED TILE SURFACES
	LIMIT OF WORK



Balboa Elementary School  
1844 Bel Aire Drive, Glendale, CA 91201

DESIGNER



837 North Spring Street / Third Floor / Los Angeles, CA 90012  
Telephone (323) 859 3100 / Fax (323) 859 3100

CONSULTANTS

CIVIL ENGINEER  
GREEN ENGINEERING  
STRUCTURAL ENGINEER  
KOFF CONSULTING ENGINEERS  
MECHANICAL / PLUMBING / ELECTRICAL ENGINEER  
GREEN ENGINEERING  
FIRE PROTECTION ENGINEER  
GREEN ENGINEERING

DOOR HARDWARE CONSULTANT  
ARCHITECTURAL HARDWARE SERVICES

REGISTRATION



AGENCY APPROVAL

IDENTIFICATION STAMP  
DIVISION OF STATE ARCHITECT  
OFFICE OF REGULATION SERVICES  
FILE NO. 19-41  
APPL. NO. 09-14363  
AC FL 55  
DATE

ISSUE

03-31-17 CCD-035

MARK DATE DESCRIPTION

DESIGNER PROJECT NO: A11047.05

DRAWN BY: Author

CHECKED BY: Checker

SCALE: As indicated

KEY PLAN

SHEET TITLE

ACCESSIBILITY SITE PLAN

SHEET NUMBER

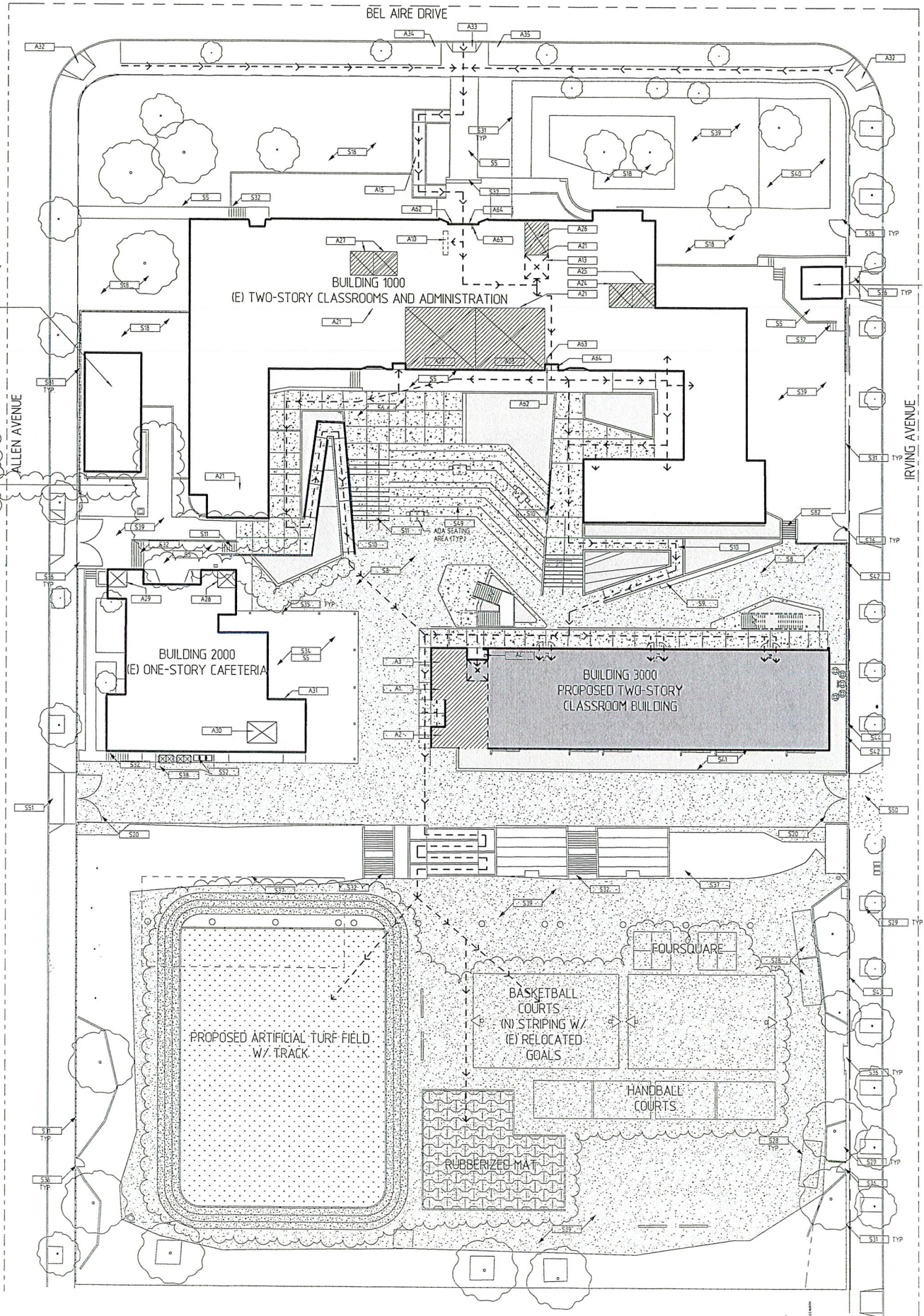
A0.30

BLDG 8101  
(E) ONE-STORY  
PORTABLE  
CLASSROOM

POT  
INDICATED  
REMOVED  
BUILDINGS NO  
IN SCOPE  
OF WORK

ALLEN AVENUE

IRVING AVENUE



GENERAL NOTES:

- 1. Site walkways shall provide a barrier free path of travel for a person in a wheelchair. The path of travel shall be a hard, stable and slip resistant surface a minimum of 48 inches in width and with a maximum gradient slope of 5% and maximum cross-slope of 2% abrupt changes in level shall not exceed beveled slope of 1:2 with a 1/2" in vertical height and 1/4" maximum in vertical differential levels.
2. Path of travel (P.O.T.) as indicated, is a common barrier free access route without any abrupt vertical changes exceeding 1/2" beveled at 1:2 maximum slope, except that level changes do not exceed 1/4" vertical and is at least 48" wide. The path surface is slip resistant, stable, firm, and smooth. Passing spaces (1193B.7.1) at least 60" x 60" are located not more than 200' apart. Parts of P.O.T. with continuous gradients have 60' level areas (1193B.7.5) not more than 4000' apart. The cross-slope does not exceed 2% and slope in the direction of travel and is less than 5% unless otherwise indicated. P.O.T. shall be maintained free of overhanging obstructions to 60" minimum (1193B.8.2) and protruding objects greater than 4" projection from wall and above 27" and less than 60" (1193B.8.1)
3. Gates in Path of travel shall have lever hardware and kick plates
4. For all site gradients see CIVIL PLANS
5. For accessible signage locations see A201 FLOOR PLANS
6. See A020 for Safe Dispersal Area
7. For ramps and stairs see A112

ACCESSIBILITY LEGEND

- EXISTING BUILDING
NEW BUILDING
CONCRETE PAVING
A/C PAVING
PLANTING AREA
LIMIT OF WORK
ACCESSIBLE PATH OF TRAVEL
ACCESSIBLE RESTROOMS
(IE) ACCESSIBLE RESTROOM
(IE) NON-ACCESSIBLE RESTROOM
ARTIFICIAL TURF FIELD
DECOMPOSED GRANITE

KEYNOTES

Table with 2 columns: KEY and TEXT. Lists various annotations like A01 ACCESSIBLE GIRL'S RESTROOM, A02 ACCESSIBLE BOYS RESTROOM, etc.

1 ACCESSIBILITY SITE PLAN-CCD-B\_010  
SCALE: 1" = 20'-0"

3/7/2018 14:35 PM