

ALL DETAILS ON THIS SHEET SHALL BE OR EXCEED THE REQUIREMENTS SPECIFIED BY THE CITY OF GLENDALE FIRE DEPARTMENT

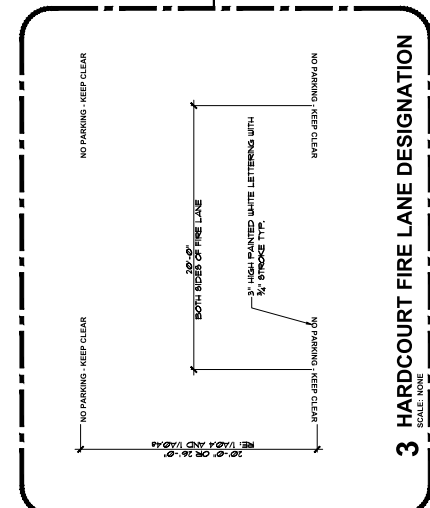


ENGINEERS 0174P
ARCHITECTS 0174P

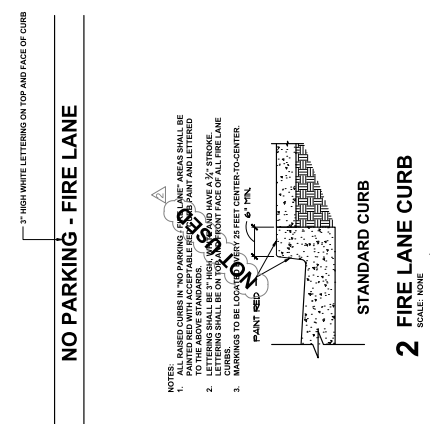
424 EAST DORNA STREET GLENDALE, CALIFORNIA
R.D. WHITE ELEMENTARY SCHOOL
SCHOOL DISTRICT
GLENDALE UNIFIED



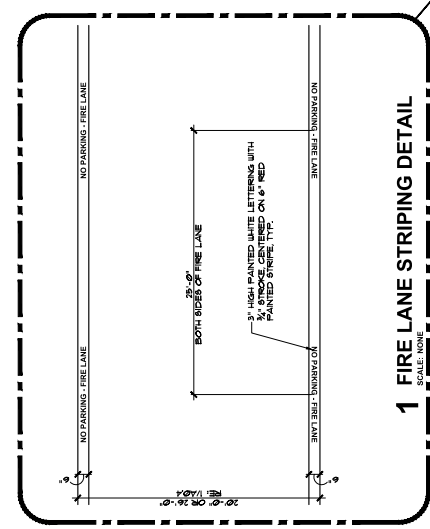
Architecture PLLP
8816 Foothill Boulevard,
Suite 103-224
Foothill Cucamonga, CA 91730
Architect@architectur9.com



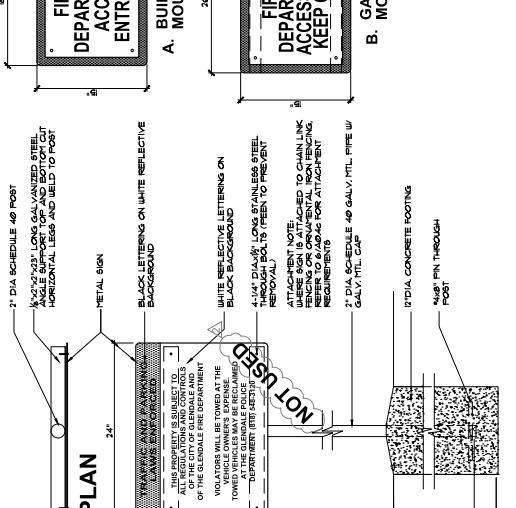
3 HARDCOURT FIRE LANE DESIGNATION
SCALE: NONE



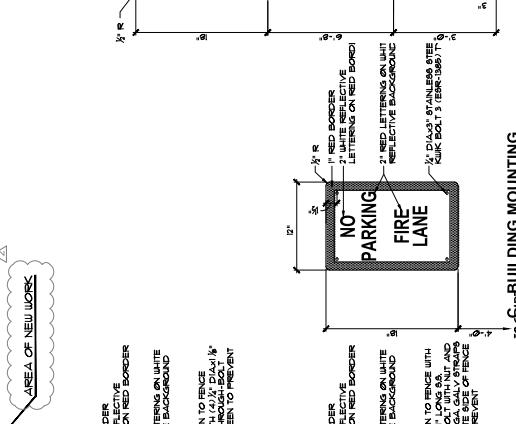
2 FIRE LANE CURB
SCALE: NONE



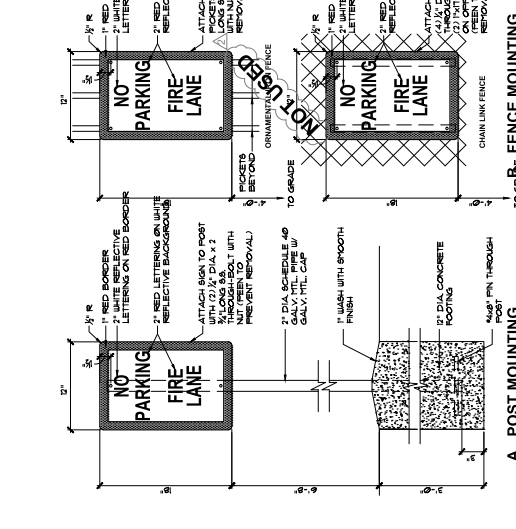
1 FIRE LANE STRIPING DETAIL
SCALE: NONE



5 FIRE LANE ENTRANCE SIGN
SCALE: 1/12\"/>



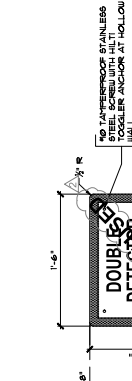
4 FIRE LANE SIGN
SCALE: 1/12\"/>



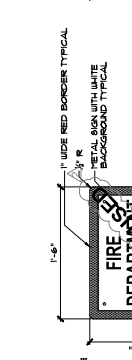
6 FIRE DEPARTMENT ACCESS SIGNS
SCALE: 1/12\"/>



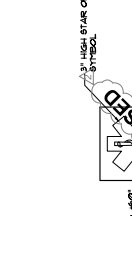
10 BUILDING SIGN
SCALE: NONE



9 DDC SIGN
SCALE: 1/12\"/>



8 FDC SIGN
SCALE: 1/12\"/>



7 STAR OF LIFE SIGN
SCALE: 3\"/>

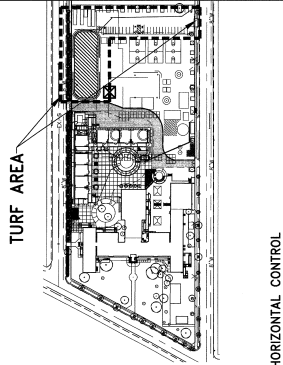
PROJECT NO.: 254801
DATE: 12-21-11
REVISED: 12-10-14
REVISED: 6-5-17
FIRE DEPARTMENT REQUIREMENTS -
CITY OF GLENDALE
SIGNAGE

THIS APPROVAL IS FOR ITEMS WITHIN CLOUDED AREAS ONLY. FOR OTHER INFORMATION NOT SHOWN, REFER TO ORIGINAL DSA APPROVED PLANS.
DO NOT USE THESE PLANS AS SUBSTITUTE FOR THE ORIGINAL DSA APPROVED PLANS.

REVISIONS:
DIV. OF THE STATE ARCHITECT
LOS ANGELES BASIN REGIONAL OFFICE
APR. NO. 03-14348 DATE: 08/16/93
ACCA FLS
APR. NO. 03-14348 DATE: 08/16/93

DSA STAMP

PHASE 2
A049



ARCHITECTS & ENGINEERS
 R.D. WHITE ELEMENTARY SCHOOL
 SCHOOL DISTRICT
 GLENDALE UNIFIED



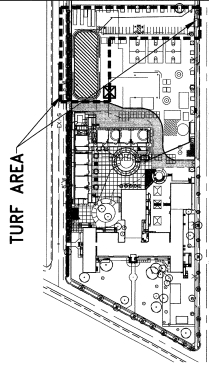
8816 Foothill Boulevard
 Suite 103-224
 Rancho Cucamonga, CA 91730
 Architecture@architectured.com

Architecture
 PLLP
 6

PHASE 2

PROJECT NO. 15-48801
 DATE: 05-25-14
 REVISED DATE: 12-19-2014
 REVISED DATE: 07-18-2015
 CIVIL STORM DRAIN PLAN

C2.3



TURF AREA

HORIZONTAL CONTROL
 A DIGITAL FILE CAN BE PROVIDED UPON REQUEST FOR HORIZONTAL CONTROL.

LEGEND

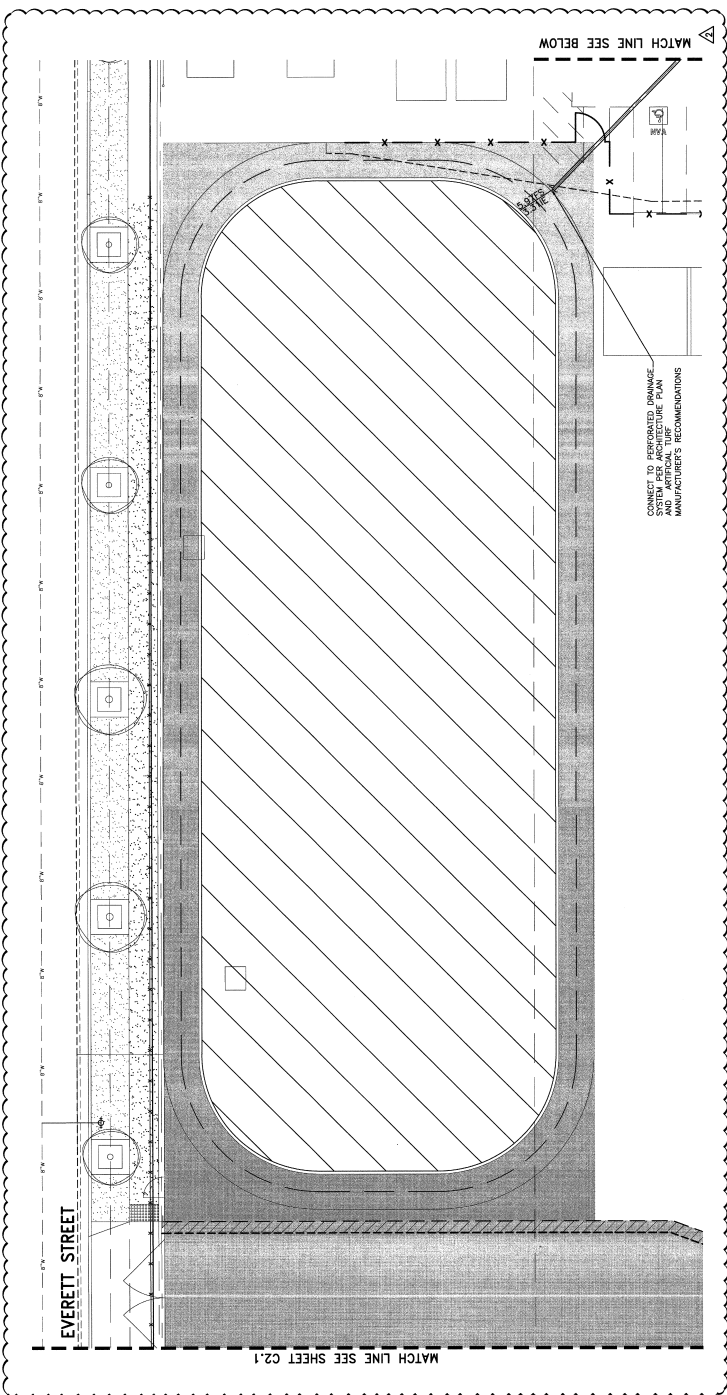
UNPAVED EXIST.	UNPAVED EXIST.	MIN.	MIN. LINE
TEMP.	TEMP.	MAX.	MAXIMUM
DDCA	DDCA	FT	FINISHED GROUND
A.C.	A.C.	FT	FINISHED SURFACE
A.B.	A.B.	R/S	ASPHALTIC CONCRETE
L.S.	L.S.	C.B.	GRADE BREAK
TC	TC	CONCRETE CURB	STANDARD URBAN
FF	FF	SUMP	STANDARD URBAN
			STORMWATER INFILTRATION PLAN
			ASPHALTIC CONCRETE
			PORTLAND CONCRETE CEMENT
			TURF AREA

STORM DRAIN CONSTRUCTION NOTES

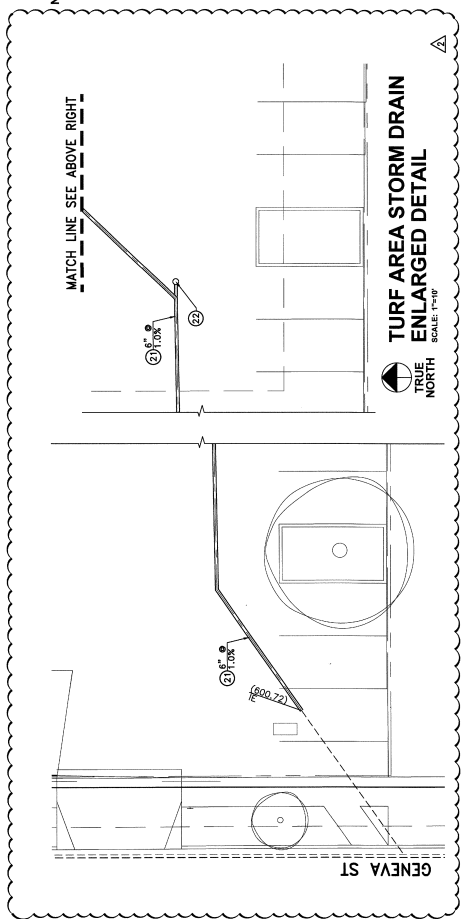
- CONNECT TO BUILDING STORM DRAIN. SEE PLUMBING FRAMES SHEET P2.1
- BRUSH AND INSTALL 3/4" P.V.C. PIPE, SLOPE AND SIZE AS INDICATED
- BRUSH AND INSTALL AREA DRAIN PER DETAIL (A)
- BRUSH AND INSTALL BROOKS BOX CATCHER (24" SERIES) WITH TRAFFIC SAFETY WHEEL PROOF BOLT-DOWN STEEL GRATES (OR APPROVED EQUAL)
- CONSTRUCT TURBOGRY BRASS PER APWA STD. 151-1 (TYPE 3) SEE DETAIL (B)
- BRUSH AND INSTALL BRASS WHEELED BRASS PER DETAIL (C)
- BRUSH AND INSTALL WOODRUFF FILTER (TYPE 16 SHOWN) PER DETAIL (D)
- CONSTRUCT INFILTRATION BASIN PER DETAIL (E)

Prepared by
adkan ENGINEERS
 Civil Engineering - Surveying - Planning
 8679 Airport Drive, Riverside, CA 92504
 (951) 514-1100
 THE APPROVAL IS FOR THE WORK RECORDED HEREON AND DOES NOT CONSTITUTE AN ENDORSEMENT OF ANY DESIGN OR MATERIALS PROVIDED WITHIN CLOSED AREAS. REFER TO ORIGINAL DRA APPROVED PLANS.
 DO NOT USE THESE PLANS AS SUBSTITUTE FOR THE ORIGINAL APPROVED PHASE.
 REVISIONS

APPROVED ARCHITECT
 LOS ANGELES BASIN REGIONAL OFFICE
 DATE: MAY 09 2015
 APPA NO. 03-115340
 DSA STAMP



TURF AREA STORM DRAIN ENLARGED DETAIL
 SCALE: 1"=10'

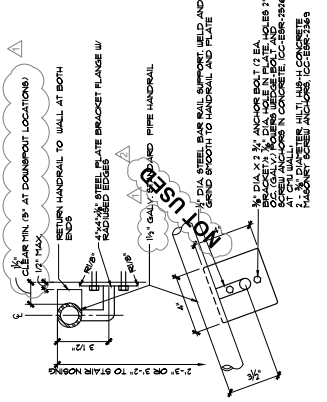


TURF AREA STORM DRAIN ENLARGED DETAIL
 SCALE: 1"=10'

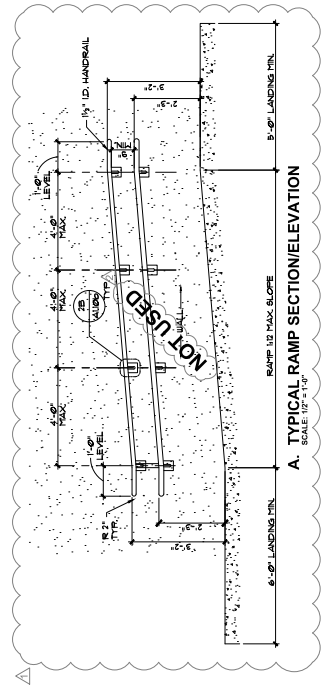
A1109

APPROVED
 DIV. OF THE STATE ARCHITECT
 LOS ANGELES BASIN REGIONAL OFFICE
 AC/FLS
 APR. NO. 03-14508 DATE: NOV 09 2015
 DSA STAMP

THIS APPROVAL IS FOR ITEMS WITHIN CLOUDED AREAS ONLY. FOR OTHER INFORMATION NOT SHOWN HEREON, REFER TO ORIGINAL DSA APPROVED PLANS.
 DO NOT USE THESE PLANS AS SUBSTITUTE FOR THE ORIGINAL DSA APPROVED PLANS.

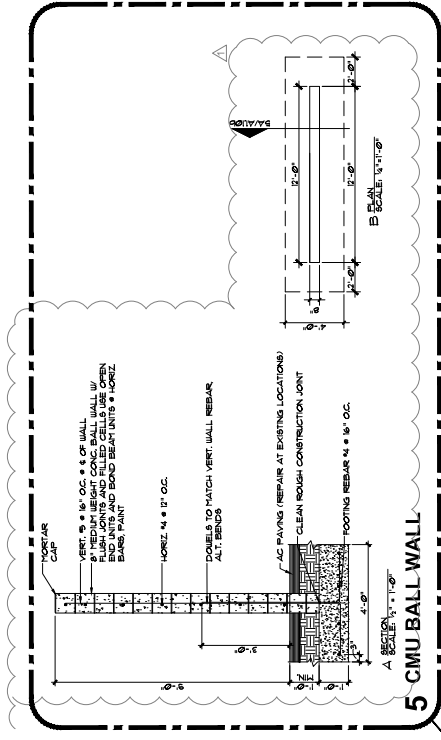


A. TYPICAL RAMP SECTION ELEVATION
 SCALE: 1/8" = 1'-0"

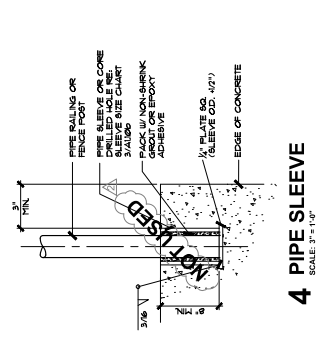


B. TYPICAL GUARDRAIL DETAIL
 SCALE: 1/8" = 1'-0"

2 RAMP RAILING AT WALL CONDITION
 SCALE VARIES

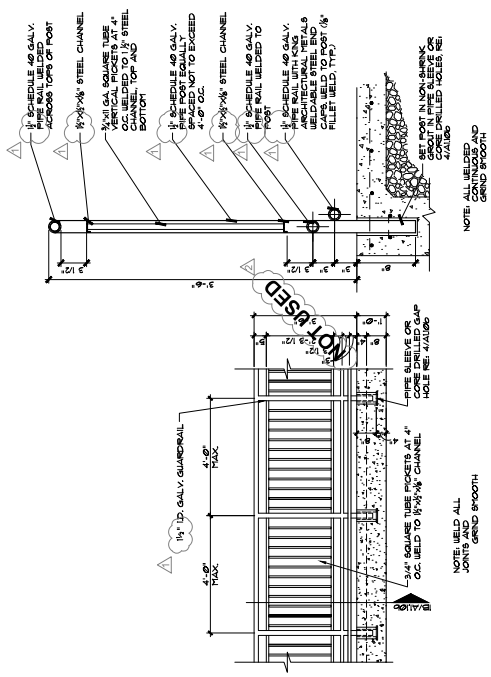


5 CMU BALL WALL
 SCALE: 1/4" = 1'-0"



4 PIPE SLEEVE
 SCALE: 1/4" = 1'-0"

AREA OF NEW WORK



1 TYPICAL GUARDRAIL DETAIL
 SCALE VARIES

3 PIPE SLEEVE SIZE CHART
 REFER TO ASTM A53, TABLE X2.2 FOR DIMENSIONS AND SIZES OF PIPE.

RAILING / PIPE POST	PIPE SLEEVE	W.T. SCHED.	O. D.	NOMINAL DIAMETER	CLEARANCE TO POST (INCHES)
STD. WT. SCHED. 40	STD. WT. SCHED. 40	1.660	2.087	2"	0.607
STD. WT. SCHED. 40	EX. STRONG SCHED. 40	1.660	1.938	2"	0.279
STD. WT. SCHED. 40	EX. STRONG SCHED. 40	1.900	2.322	2 1/2"	0.423
STD. WT. SCHED. 40	EX. STRONG SCHED. 40	2.375	2.990	3"	0.585
STD. WT. SCHED. 40	EX. STRONG SCHED. 40	3.500	3.364	3 1/2"	0.489
STD. WT. SCHED. 40	EX. STRONG SCHED. 40	4.500	4.026	4"	0.536
STD. WT. SCHED. 40	EX. STRONG SCHED. 40	4.850	4.613	5"	0.813
STD. WT. SCHED. 40	EX. STRONG SCHED. 40	5.647	5.047	5"	0.547
STD. WT. SCHED. 40	EX. STRONG SCHED. 40	5.503	6.085	6"	0.502
STD. WT. SCHED. 40	EX. STRONG SCHED. 40	6.625	7.625	8"	1.000
STD. WT. SCHED. 40	EX. STRONG SCHED. 40	8.625	9.750	10"	1.125
STD. WT. SCHED. 40	EX. STRONG SCHED. 40	10.150	11.750	12"	1.000

3 PIPE SLEEVE SIZE CHART
 REFER TO ASTM A53, TABLE X2.2 FOR DIMENSIONS AND SIZES OF PIPE.

FENCE SCHEDULE

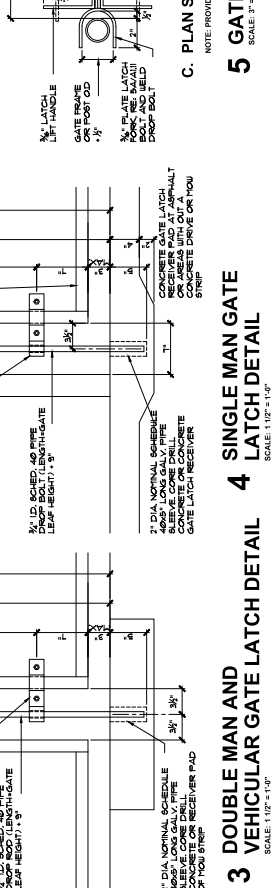
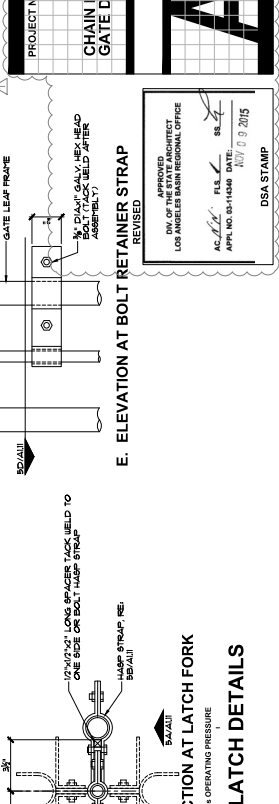
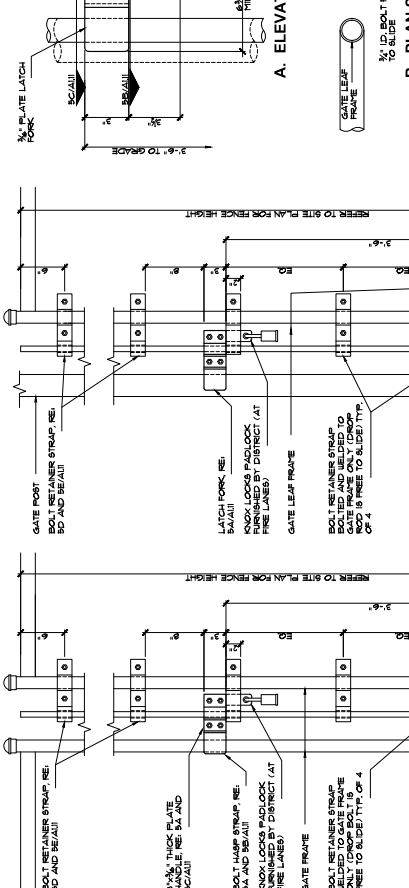
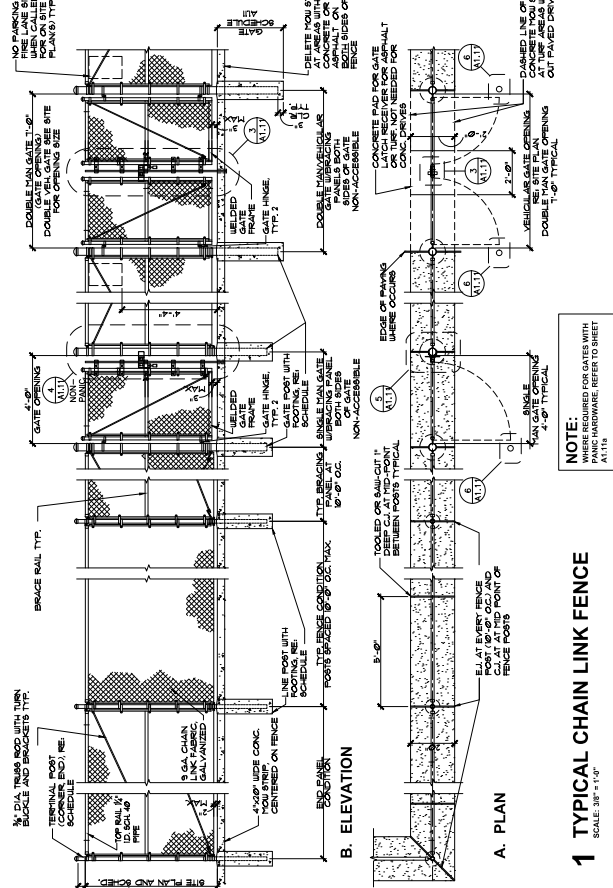
FENCE HEIGHT	TERMINAL POST SIZE	LINE POST SIZE	DIA. (O.D.)	NOMINAL HEIGHT	DIA. (O.D.)	DIA. (I.D.)	DEPTH	REQUIRED DIAGONAL BRACING	FABRIC TENSION BANDS AT TERMINAL POST (QUANTITY)
4'-0"	2.875" DIA. (O.D.)	2.5" NOMINAL	2.375" DIA. (O.D.)	6'-1" HEIGHT	2" DIA. (O.D.)	1.875" DIA. (I.D.)	8" DEPTH	NO	NO
6'-0"	2.875" DIA. (O.D.)	2.5" NOMINAL	2.375" DIA. (O.D.)	6'-7" HEIGHT	2" DIA. (O.D.)	1.875" DIA. (I.D.)	8" DEPTH	NO	NO
7'-0"	3.5" DIA. (O.D.)	3" NOMINAL	2.875" DIA. (O.D.)	9'-10" HEIGHT	2.5" DIA. (O.D.)	2.125" DIA. (I.D.)	10" DEPTH	NO	YES
8'-0"	3.5" DIA. (O.D.)	3" NOMINAL	2.875" DIA. (O.D.)	11'-1" HEIGHT	2.5" DIA. (O.D.)	2.125" DIA. (I.D.)	10" DEPTH	NO	YES
10'-0"	4.5" DIA. (O.D.)	4" NOMINAL	3.5" DIA. (O.D.)	13'-7" HEIGHT	3" DIA. (O.D.)	2.625" DIA. (I.D.)	12" DEPTH	NO	YES
12'-0"	4.5" DIA. (O.D.)	4" NOMINAL	3.5" DIA. (O.D.)	15'-1" HEIGHT	3" DIA. (O.D.)	2.625" DIA. (I.D.)	12" DEPTH	YES	YES

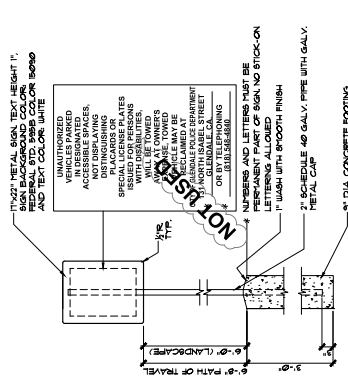
GATE SCHEDULE

FENCE HEIGHT	LEAF WIDTH	DIA. (O.D.)	NOMINAL HEIGHT	DIA. (O.D.)	NOMINAL HEIGHT	DEPTH
4'-0"	4'-0" OR LESS	2.375"	2"	2.375"	10"	2'-0"
6'-0"	OVER 4'-0" TO 4'-6"	2.875"	2.5"	2.375"	12"	3'-0"
7'-0"	OVER 4'-6" TO 4'-9"	3.5"	3.5"	2.875"	14"	3'-0"
8'-0"	OVER 4'-9" TO 4'-12"	3.5"	3.888"	3.5"	16"	3'-0"
10'-0"	OVER 4'-12" TO 4'-9"	4.5"	4.5"	3.5"	18"	3'-0"
12'-0"	OVER 4'-9" TO 4'-6"	4.5"	6.000"	4.5"	18"	3'-0"

GENERAL CHAIN LINK FENCE NOTES

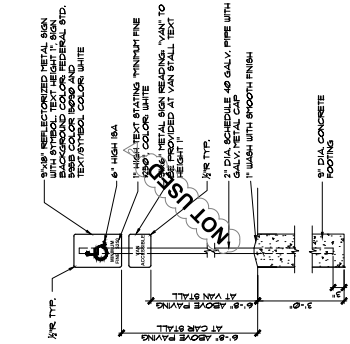
- ALL CHAIN LINK COMPONENTS TO MEET TO EXCEED ASTM STANDARDS.
- ALL FENCE AND GATE COMPONENTS SHALL BE HOT-DIP GALVANIZED. GATE TO BE GALVANIZED AFTER ASSEMBLY. FABRIC TO BE GALVANIZED AFTER ASSEMBLY.
- ALL FENCE FABRIC SHALL BE GALVANIZED AFTER WOVEN.
- POSTS SHALL BE HOT-DIP GALVANIZED AFTER WOVEN.
- POSTS SHALL BE GALVANIZED AFTER WOVEN.
- POST LINE CAPS AND BALL ENDS SHALL BE DESIGNED TO FIT SMOOTHLY OVER POSTS AND EXCLUDE MOISTURE FROM INSIDE.
- POSTS SHALL BE GALVANIZED AFTER WOVEN.
- SPOT WELD TO ALL GATE HARDWARE UPON FINAL ADJUSTMENTS TO MAINTAIN ALIGNMENT.
- MAN GATES TO COMPLY WITH CBC 1003.3.1 REQUIREMENTS FOR DOORS.



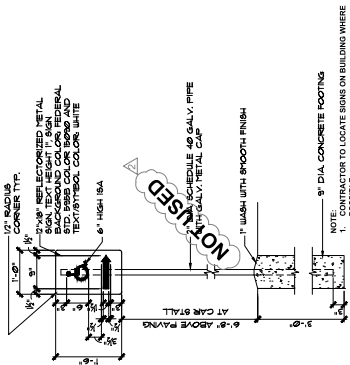


1 TOW AWAY SIGN
SCALE: 3/4" = 1'-0"

* NOTE: INFORMATION SHALL BE OBTAINED FROM DISTRICT PRIOR TO MANUFACTURE OF SIGNAGE STATING THAT THE SIGNAGE IS PERMANENT AND NOT TO BE REMOVED PRIOR TO SIGN FABRICATION.

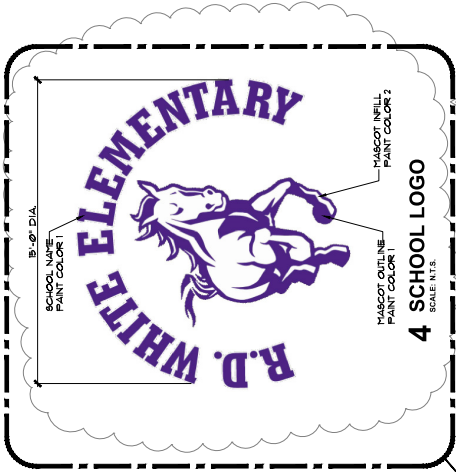


2 ACCESSIBLE PARKING STALL SIGN
SCALE: 3/4" = 1'-0"



3 PATH SIGN
SCALE: 3/4" = 1'-0"

AREA OF NEW WORK



4 SCHOOL LOGO
SCALE: N.T.S.

GLENDALE UNIFIED SCHOOL DISTRICT
R. D. WHITE ELEMENTARY SCHOOL
NEW CLASSROOM BUILDING
744 EAST DORANA STREET, GLENDALE, CALIFORNIA



Architecture
9 PLLP
816 Foothill Boulevard,
Suite 103-224
Pasadena, CA 91730
Architect@architect9.com



PROJECT NO.: 254801
DATE: 12-21-11
REVISID: 12-10-14
REVISED: 6-5-17

A1120

THIS APPROVAL IS FOR ITEMS WITHIN CLOUED AREAS ONLY. FOR OTHER INFORMATION NOT SHOWN HEREON, CONTRACTOR REFER TO ORIGINAL DSA APPROVED PLANS.
DO NOT USE THESE PLANS AS SUBSTITUTE FOR THE ORIGINAL DSA APPROVED PLANS.

REVISED

APPROVED
BY OF THE STATE ARCHITECT
LOS ANGELES BASIN REGIONAL OFFICE

AC/PL FLS ES
APPL. NO. 03-14360 DATE: 12/10/14

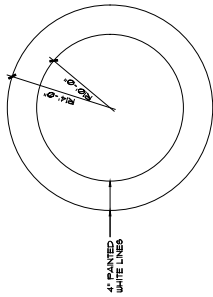
DSA STAMP

SIGN FASTENING GENERAL NOTES:

- ATTACH METAL SIGNS TO POSTS WITH 5/16" DIA. X 2,3/4" LONG GALVANIZED HEAD BOLT WITH WASHERS (BOTH ENDS) AND NUTS. PROVIDE 2 BOLTS MINIMUM AT EACH SIGN.
- PEEN EXPOSED BOLTS THREADS TO PREVENT SIGN REMOVAL.

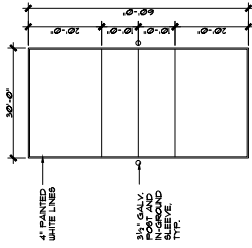
NOTE: THE MINIMUM CHARACTER HEIGHT FOR ALL SIGNS 6'-0" ABOVE PAVING FINISH ELEVATION SHALL BE 3" U.O.N. (CBC, 11178.5.4)

PHASE 2



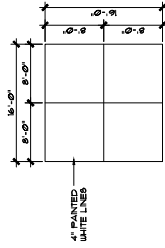
1 CIRCLE COURT

SCALE: 1/8" = 1'-0"



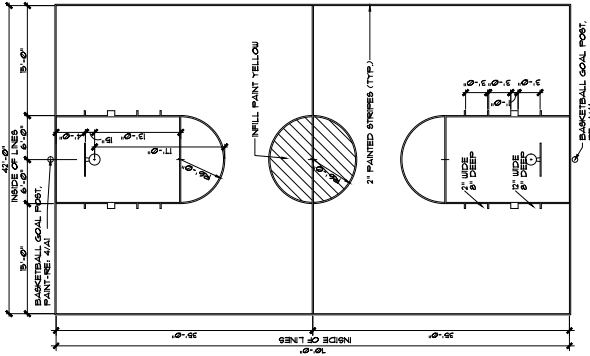
2 VOLLEYBALL COURT

SCALE: 1/16" = 1'-0"



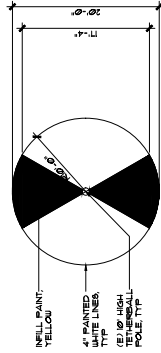
6 4 SQUARE COURT

SCALE: 1/8" = 1'-0"



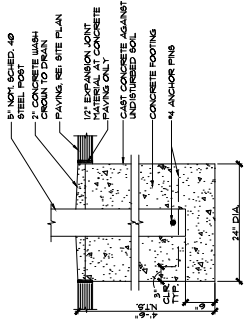
3 BASKETBALL COURT

SCALE: 1/8" = 1'-0"



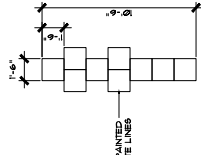
7 TETHERBALL COURT

SCALE: 1/8" = 1'-0"



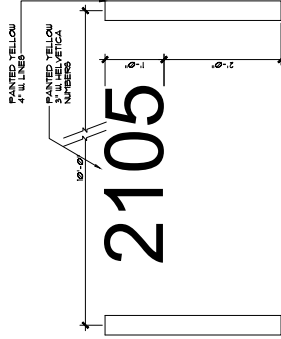
4 BASKETBALL GOAL POST DETAIL

SCALE: 1" = 1'-0"



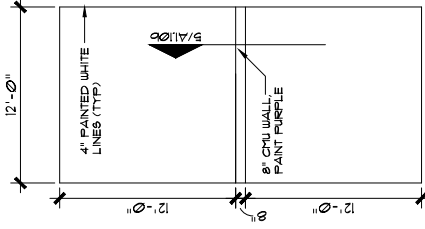
5 HOPSCOTCH COURT

SCALE: 1/4" = 1'-0"



8 NUMBERS

SCALE: 1" = 1'-0"



9 BALL WALL COURT

SCALE: 1/8" = 1'-0"



ARCHITECTS 01747P

GLENDALE UNIFIED SCHOOL DISTRICT
 R. D. WHITE ELEMENTARY SCHOOL
 NEW CLASSROOM BUILDING
 744 EAST DORAN STREET GLENDALE, CALIFORNIA



Architecture PLLP
 8816 Foothill Boulevard,
 Suite 103-224
 Rancho Cucamonga, CA 91730
 info@architectures.com

9

PROJECT NO.: 254801

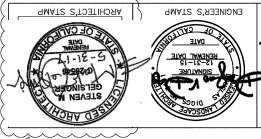
DATE: 4-25-17

SITE DETAILS / PAVEMENT MARKINGS

NEW SHEET

A1

PHASE 2



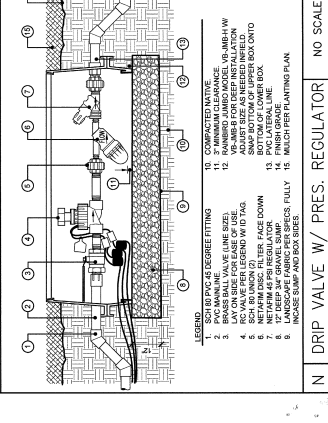
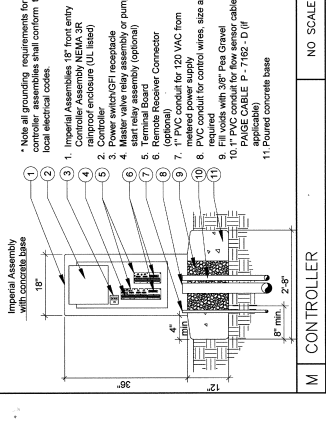
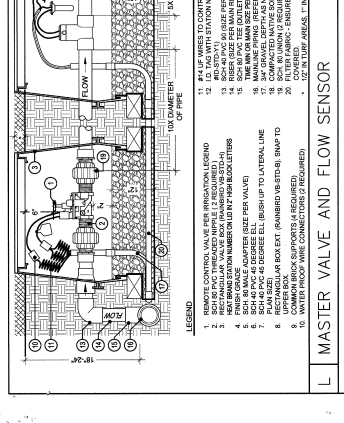
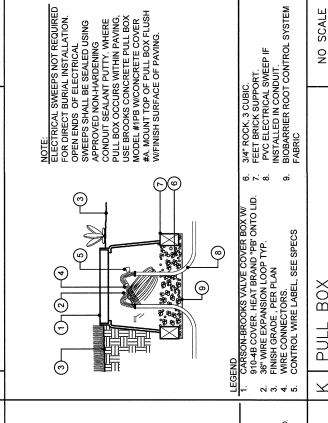
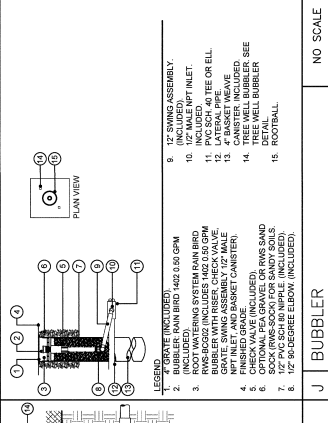
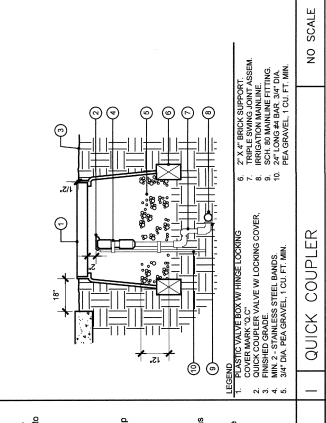
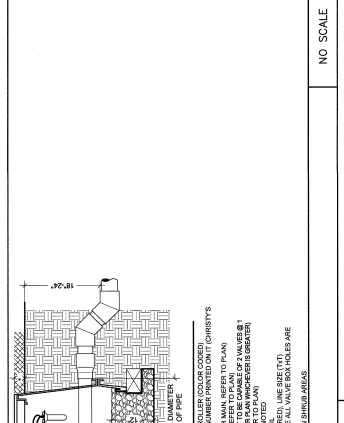
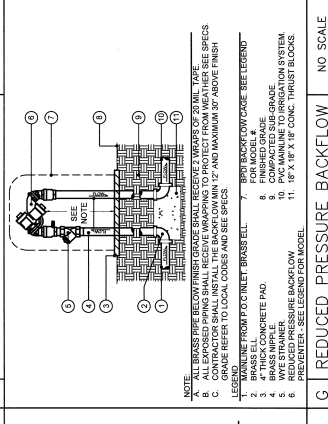
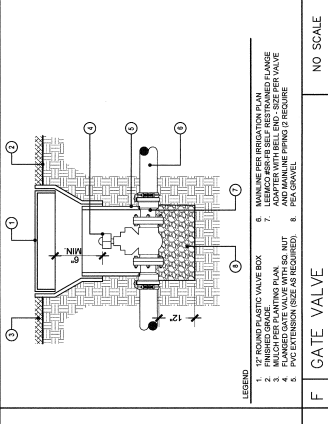
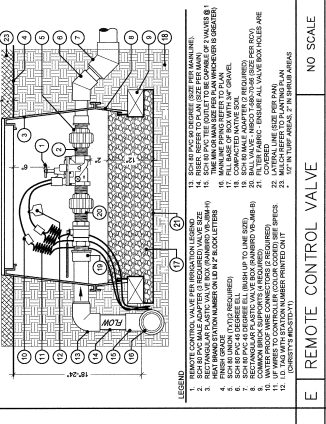
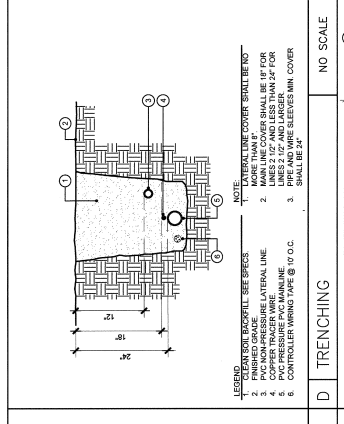
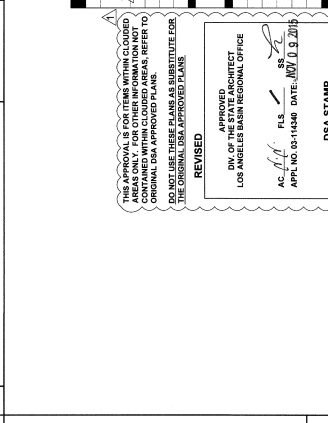
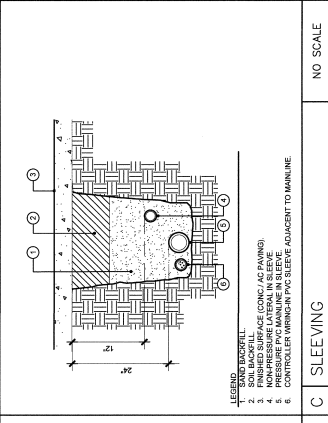
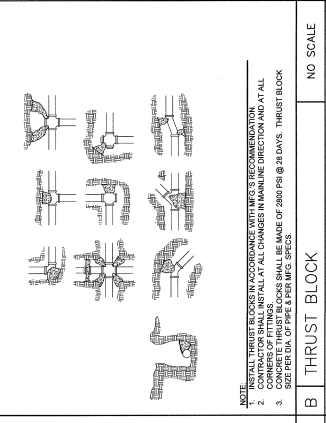
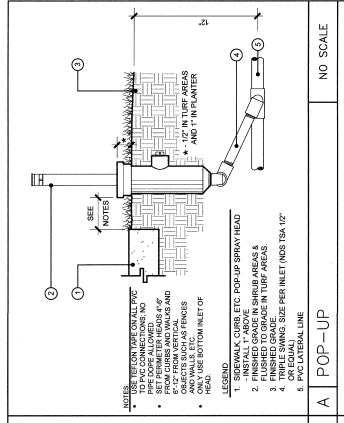
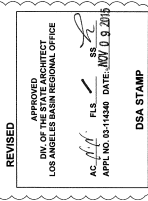
GLENDALE UNIFIED SCHOOL DISTRICT
R.D. WHITE ELEMENTARY SCHOOL
 744 EAST BORNAN STREET GLENDALE, CALIFORNIA
 ARCHITECT'S STAMP
 ENGINEER'S STAMP



Architecture
 PLLP
 6816 Foothill Boulevard,
 Suite 103-224
 Rancho Cucamonga, CA 91730
 Acontact@architectur.com



NEW SHEET
LANDSCAPE IRRIGATION DETAILS
 PROJECT NO.: 254801
 DRAWN BY: J.W.
 CHECKED BY: BMP
 SCALE: 1/4" = 1'-0"
 DATE: 12-21-11
 REVISED: 08-14-18

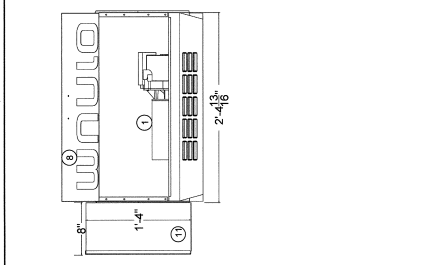
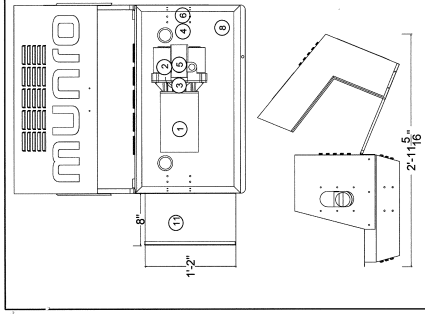


LEGEND:
 1. REMOTE CONTROL VALVE PER IRRIGATION LEGEND
 2. 1/2" DIA. PVC VALVE ADAPTER (REFER TO PLAN)
 3. 1/2" DIA. PVC VALVE ADAPTER (REFER TO PLAN)
 4. 1/2" DIA. PVC VALVE ADAPTER (REFER TO PLAN)
 5. 1/2" DIA. PVC VALVE ADAPTER (REFER TO PLAN)
 6. 1/2" DIA. PVC VALVE ADAPTER (REFER TO PLAN)
 7. 1/2" DIA. PVC VALVE ADAPTER (REFER TO PLAN)
 8. 1/2" DIA. PVC VALVE ADAPTER (REFER TO PLAN)
 9. 1/2" DIA. PVC VALVE ADAPTER (REFER TO PLAN)
 10. 1/2" DIA. PVC VALVE ADAPTER (REFER TO PLAN)
 11. 1/2" DIA. PVC VALVE ADAPTER (REFER TO PLAN)
 12. 1/2" DIA. PVC VALVE ADAPTER (REFER TO PLAN)
 13. 1/2" DIA. PVC VALVE ADAPTER (REFER TO PLAN)
 14. 1/2" DIA. PVC VALVE ADAPTER (REFER TO PLAN)
 15. 1/2" DIA. PVC VALVE ADAPTER (REFER TO PLAN)
 16. 1/2" DIA. PVC VALVE ADAPTER (REFER TO PLAN)
 17. 1/2" DIA. PVC VALVE ADAPTER (REFER TO PLAN)
 18. 1/2" DIA. PVC VALVE ADAPTER (REFER TO PLAN)
 19. 1/2" DIA. PVC VALVE ADAPTER (REFER TO PLAN)
 20. 1/2" DIA. PVC VALVE ADAPTER (REFER TO PLAN)
 21. 1/2" DIA. PVC VALVE ADAPTER (REFER TO PLAN)
 22. 1/2" DIA. PVC VALVE ADAPTER (REFER TO PLAN)
 23. 1/2" DIA. PVC VALVE ADAPTER (REFER TO PLAN)
 24. 1/2" DIA. PVC VALVE ADAPTER (REFER TO PLAN)
 25. 1/2" DIA. PVC VALVE ADAPTER (REFER TO PLAN)
 26. 1/2" DIA. PVC VALVE ADAPTER (REFER TO PLAN)
 27. 1/2" DIA. PVC VALVE ADAPTER (REFER TO PLAN)
 28. 1/2" DIA. PVC VALVE ADAPTER (REFER TO PLAN)
 29. 1/2" DIA. PVC VALVE ADAPTER (REFER TO PLAN)
 30. 1/2" DIA. PVC VALVE ADAPTER (REFER TO PLAN)

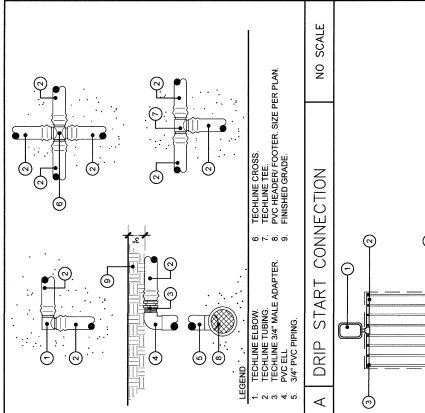
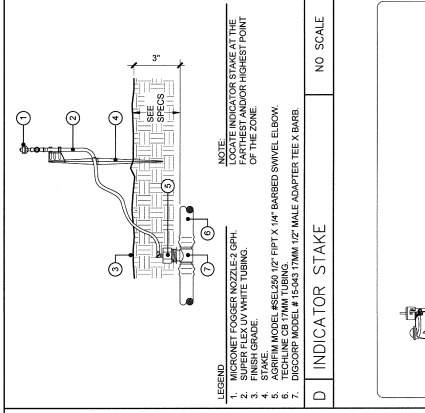
LEGEND:
 1. 1/2" DIA. PVC VALVE ADAPTER (REFER TO PLAN)
 2. 1/2" DIA. PVC VALVE ADAPTER (REFER TO PLAN)
 3. 1/2" DIA. PVC VALVE ADAPTER (REFER TO PLAN)
 4. 1/2" DIA. PVC VALVE ADAPTER (REFER TO PLAN)
 5. 1/2" DIA. PVC VALVE ADAPTER (REFER TO PLAN)
 6. 1/2" DIA. PVC VALVE ADAPTER (REFER TO PLAN)
 7. 1/2" DIA. PVC VALVE ADAPTER (REFER TO PLAN)
 8. 1/2" DIA. PVC VALVE ADAPTER (REFER TO PLAN)
 9. 1/2" DIA. PVC VALVE ADAPTER (REFER TO PLAN)
 10. 1/2" DIA. PVC VALVE ADAPTER (REFER TO PLAN)
 11. 1/2" DIA. PVC VALVE ADAPTER (REFER TO PLAN)
 12. 1/2" DIA. PVC VALVE ADAPTER (REFER TO PLAN)
 13. 1/2" DIA. PVC VALVE ADAPTER (REFER TO PLAN)
 14. 1/2" DIA. PVC VALVE ADAPTER (REFER TO PLAN)
 15. 1/2" DIA. PVC VALVE ADAPTER (REFER TO PLAN)
 16. 1/2" DIA. PVC VALVE ADAPTER (REFER TO PLAN)
 17. 1/2" DIA. PVC VALVE ADAPTER (REFER TO PLAN)
 18. 1/2" DIA. PVC VALVE ADAPTER (REFER TO PLAN)
 19. 1/2" DIA. PVC VALVE ADAPTER (REFER TO PLAN)
 20. 1/2" DIA. PVC VALVE ADAPTER (REFER TO PLAN)
 21. 1/2" DIA. PVC VALVE ADAPTER (REFER TO PLAN)
 22. 1/2" DIA. PVC VALVE ADAPTER (REFER TO PLAN)
 23. 1/2" DIA. PVC VALVE ADAPTER (REFER TO PLAN)
 24. 1/2" DIA. PVC VALVE ADAPTER (REFER TO PLAN)
 25. 1/2" DIA. PVC VALVE ADAPTER (REFER TO PLAN)
 26. 1/2" DIA. PVC VALVE ADAPTER (REFER TO PLAN)
 27. 1/2" DIA. PVC VALVE ADAPTER (REFER TO PLAN)
 28. 1/2" DIA. PVC VALVE ADAPTER (REFER TO PLAN)
 29. 1/2" DIA. PVC VALVE ADAPTER (REFER TO PLAN)
 30. 1/2" DIA. PVC VALVE ADAPTER (REFER TO PLAN)

LEGEND:
 1. 1/2" DIA. PVC VALVE ADAPTER (REFER TO PLAN)
 2. 1/2" DIA. PVC VALVE ADAPTER (REFER TO PLAN)
 3. 1/2" DIA. PVC VALVE ADAPTER (REFER TO PLAN)
 4. 1/2" DIA. PVC VALVE ADAPTER (REFER TO PLAN)
 5. 1/2" DIA. PVC VALVE ADAPTER (REFER TO PLAN)
 6. 1/2" DIA. PVC VALVE ADAPTER (REFER TO PLAN)
 7. 1/2" DIA. PVC VALVE ADAPTER (REFER TO PLAN)
 8. 1/2" DIA. PVC VALVE ADAPTER (REFER TO PLAN)
 9. 1/2" DIA. PVC VALVE ADAPTER (REFER TO PLAN)
 10. 1/2" DIA. PVC VALVE ADAPTER (REFER TO PLAN)
 11. 1/2" DIA. PVC VALVE ADAPTER (REFER TO PLAN)
 12. 1/2" DIA. PVC VALVE ADAPTER (REFER TO PLAN)
 13. 1/2" DIA. PVC VALVE ADAPTER (REFER TO PLAN)
 14. 1/2" DIA. PVC VALVE ADAPTER (REFER TO PLAN)
 15. 1/2" DIA. PVC VALVE ADAPTER (REFER TO PLAN)
 16. 1/2" DIA. PVC VALVE ADAPTER (REFER TO PLAN)
 17. 1/2" DIA. PVC VALVE ADAPTER (REFER TO PLAN)
 18. 1/2" DIA. PVC VALVE ADAPTER (REFER TO PLAN)
 19. 1/2" DIA. PVC VALVE ADAPTER (REFER TO PLAN)
 20. 1/2" DIA. PVC VALVE ADAPTER (REFER TO PLAN)
 21. 1/2" DIA. PVC VALVE ADAPTER (REFER TO PLAN)
 22. 1/2" DIA. PVC VALVE ADAPTER (REFER TO PLAN)
 23. 1/2" DIA. PVC VALVE ADAPTER (REFER TO PLAN)
 24. 1/2" DIA. PVC VALVE ADAPTER (REFER TO PLAN)
 25. 1/2" DIA. PVC VALVE ADAPTER (REFER TO PLAN)
 26. 1/2" DIA. PVC VALVE ADAPTER (REFER TO PLAN)
 27. 1/2" DIA. PVC VALVE ADAPTER (REFER TO PLAN)
 28. 1/2" DIA. PVC VALVE ADAPTER (REFER TO PLAN)
 29. 1/2" DIA. PVC VALVE ADAPTER (REFER TO PLAN)
 30. 1/2" DIA. PVC VALVE ADAPTER (REFER TO PLAN)

LEGEND:
 1. 1/2" DIA. PVC VALVE ADAPTER (REFER TO PLAN)
 2. 1/2" DIA. PVC VALVE ADAPTER (REFER TO PLAN)
 3. 1/2" DIA. PVC VALVE ADAPTER (REFER TO PLAN)
 4. 1/2" DIA. PVC VALVE ADAPTER (REFER TO PLAN)
 5. 1/2" DIA. PVC VALVE ADAPTER (REFER TO PLAN)
 6. 1/2" DIA. PVC VALVE ADAPTER (REFER TO PLAN)
 7. 1/2" DIA. PVC VALVE ADAPTER (REFER TO PLAN)
 8. 1/2" DIA. PVC VALVE ADAPTER (REFER TO PLAN)
 9. 1/2" DIA. PVC VALVE ADAPTER (REFER TO PLAN)
 10. 1/2" DIA. PVC VALVE ADAPTER (REFER TO PLAN)
 11. 1/2" DIA. PVC VALVE ADAPTER (REFER TO PLAN)
 12. 1/2" DIA. PVC VALVE ADAPTER (REFER TO PLAN)
 13. 1/2" DIA. PVC VALVE ADAPTER (REFER TO PLAN)
 14. 1/2" DIA. PVC VALVE ADAPTER (REFER TO PLAN)
 15. 1/2" DIA. PVC VALVE ADAPTER (REFER TO PLAN)
 16. 1/2" DIA. PVC VALVE ADAPTER (REFER TO PLAN)
 17. 1/2" DIA. PVC VALVE ADAPTER (REFER TO PLAN)
 18. 1/2" DIA. PVC VALVE ADAPTER (REFER TO PLAN)
 19. 1/2" DIA. PVC VALVE ADAPTER (REFER TO PLAN)
 20. 1/2" DIA. PVC VALVE ADAPTER (REFER TO PLAN)
 21. 1/2" DIA. PVC VALVE ADAPTER (REFER TO PLAN)
 22. 1/2" DIA. PVC VALVE ADAPTER (REFER TO PLAN)
 23. 1/2" DIA. PVC VALVE ADAPTER (REFER TO PLAN)
 24. 1/2" DIA. PVC VALVE ADAPTER (REFER TO PLAN)
 25. 1/2" DIA. PVC VALVE ADAPTER (REFER TO PLAN)
 26. 1/2" DIA. PVC VALVE ADAPTER (REFER TO PLAN)
 27. 1/2" DIA. PVC VALVE ADAPTER (REFER TO PLAN)
 28. 1/2" DIA. PVC VALVE ADAPTER (REFER TO PLAN)
 29. 1/2" DIA. PVC VALVE ADAPTER (REFER TO PLAN)
 30. 1/2" DIA. PVC VALVE ADAPTER (REFER TO PLAN)



#	Description
1	Simplex VFD
2	3-phase three 57psi incoming
3	Pressure Transducer Gauge 0-160
4	2" Check Isolation Valve & Flange
5	2" Hose with quick couplers
6	1-1/2" Quick-coupler
7	NOT USED
8	Stainless Steel End Piped Control
9	Not Used
10	Not Used
11	Variable Frequency Drive with 18 x 14 x 8 Panel Vents 3/8"



BOOSTER PUMP SYSTEM (MODEL: SENSUS/IMPACT/TOPO/DZ COLONIA/STANFORD)

PERFORMANCE REQUIREMENTS:

The pump shall be capable of providing the required flow through the system. The pump shall be capable of providing the required flow through the system. The pump shall be capable of providing the required flow through the system.

GENERAL NOTES:

All work shall be in accordance with the latest NEMA, IEEE, ANSI and applicable code requirements. The pump shall be installed in a dry location. The pump shall be installed in a dry location.

CLIMATE LOGIC™

The Climate Logic™ weather sensor shall be installed in a dry location. The sensor shall be installed in a dry location. The sensor shall be installed in a dry location.

NOTES:

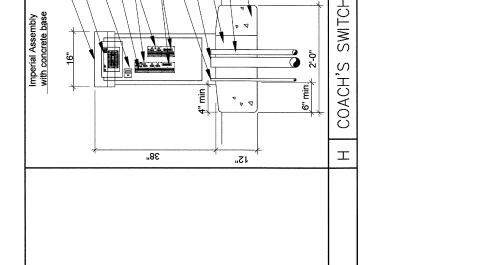
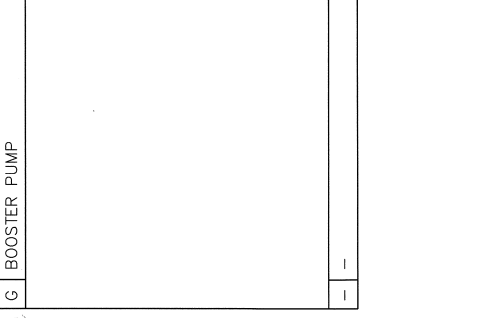
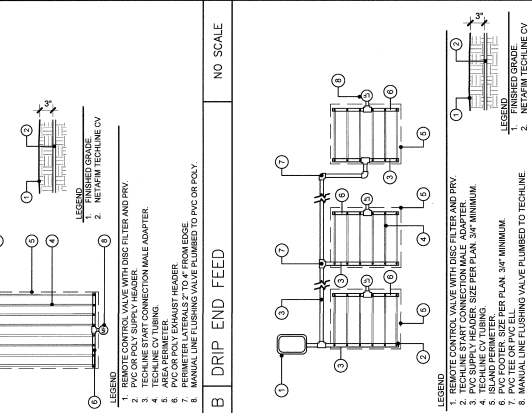
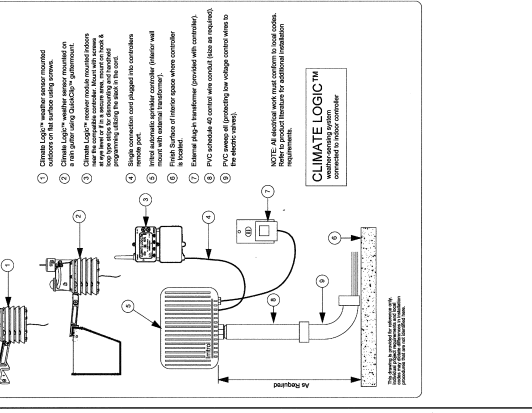
The manufacturer shall warrant the water pumping system to be free of defects in materials and workmanship for a period of two (2) years from the date of installation.

IMPERIAL ASSEMBLY

The Imperial Assembly shall be installed in a dry location. The assembly shall be installed in a dry location. The assembly shall be installed in a dry location.

NOTES:

The manufacturer shall warrant the Imperial Assembly to be free of defects in materials and workmanship for a period of two (2) years from the date of installation.

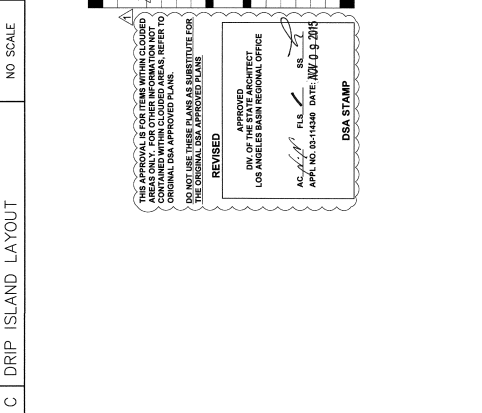
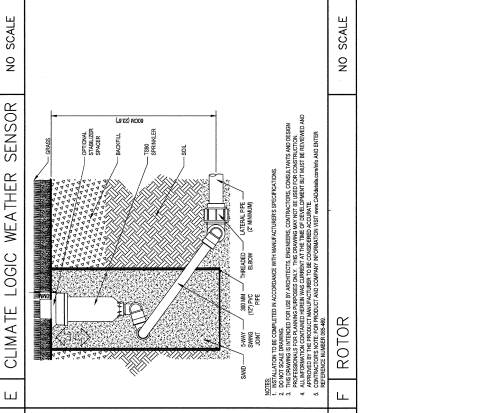


COACH'S SWITCH

The Coach's Switch shall be installed in a dry location. The switch shall be installed in a dry location. The switch shall be installed in a dry location.

NOTES:

The manufacturer shall warrant the Coach's Switch to be free of defects in materials and workmanship for a period of two (2) years from the date of installation.



ARCHITECT'S STAMP

ENGINEER'S STAMP

744 BAYVIEW STREET, GLENDALE, CALIFORNIA

R.D. WHITE ELEMENTARY SCHOOL

SCHOOL DISTRICT

GLENDALE UNIFIED

ARCHITECT'S STAMP

9 Architecture PLLP

8915 Foothill Boulevard, Rancho Cucamonga, CA 91730

Architect@architect9.com

DATE: 12-21-11

REVISED: 08-14-16

CHECKED BY: DRIP

DESIGNED BY: DRIP

LANDSCAPE IRRIGATION DETAILS

NEW SHEET

123

PROJECT NO.: 254801

DRAWN BY: SW

APPROVED: [Signature]

DATE: 08-14-16

APPROVED: [Signature]

DATE: 08-14-16

APPROVED ARCHITECT

DIV. OF CONSTRUCTION

LOS ANGELES BASIN REGIONAL OFFICE

AS: [Signature]

DATE: 08-14-16

DSA STAMP

A DRIP START CONNECTION

NO SCALE

B DRIP END FEED

NO SCALE

C DRIP ISLAND LAYOUT

NO SCALE

D INDICATOR STAKE

NO SCALE

E CLIMATE LOGIC WEATHER SENSOR

NO SCALE

F ROTOR

NO SCALE

G BOOSTER PUMP

NO SCALE

H COACH'S SWITCH

NO SCALE

I IMPERIAL ASSEMBLY

NO SCALE

J PHASE 2 (NOT ALL DETAILS MAY BE USED)