



The most Nty corner of Lot 5, Block K, Crescenta Canada, M.R. 5-574/575 established at rec. dist. of 122.58' from C/L LACFC, Right-of-Way, 50.00' wide with Tract No. 13310, M.B. 303-33/34.

Int. of C/L LACFC, Right-of-Way, 50.00' wide with Nty line Lot 5, Block K, Crescenta Canada, M.R. 5-574/575.

Int. of Nty line of Lot 5, Crescenta Canada, M.R. 5-574/575 with C/L line of LACFC, Right-of-Way, 50.00' wide established at rec. dist. of 122.58' from the most Sty cor. of Lot 14, Tract No. 13310, M.B. 303-33/34 per said Tract.

Int. of C/L of Cloudsdale Avenue with Nty line Lot 5, Block K, Crescenta Canada, M.R. 5-574/575 established at rec. dist. of 18.22' from C/L L.S. 7048 to SE per PWB 1921, Pg. 3089.

FD LT & T.S. 2048 per PWB 1921, Pg. 3089 Accepted as POI Nty Line Lot 5, Block K, Crescenta Canada, M.R. 5-574/575 per Tract No. 13310, M.B. 303-33/34.

50 feet wide flood control easement rec'd in BK 16500, Pg. 383, D.R.

Parcel 7

Nty line of Lot 5, Block K, Crescenta Canada, M.R. 5-574/575.

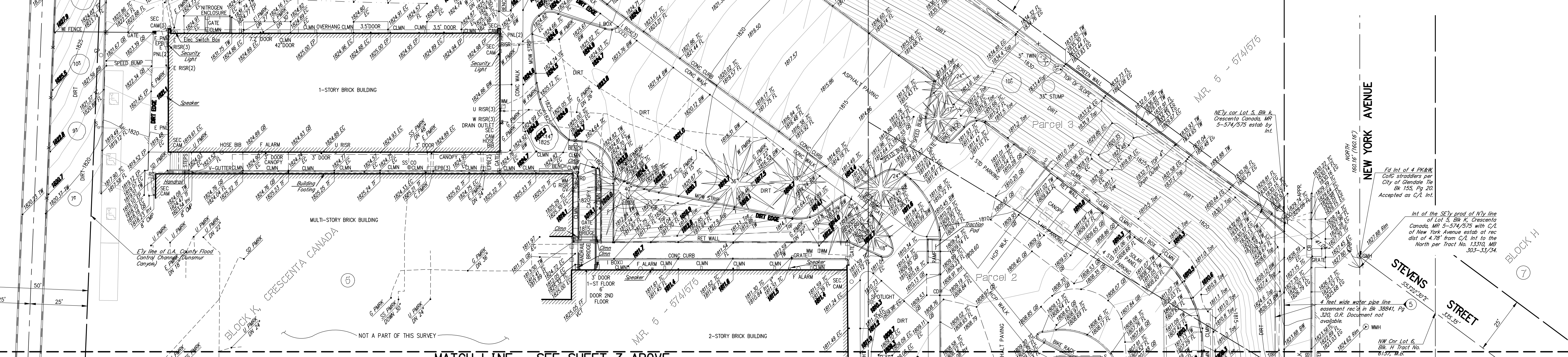
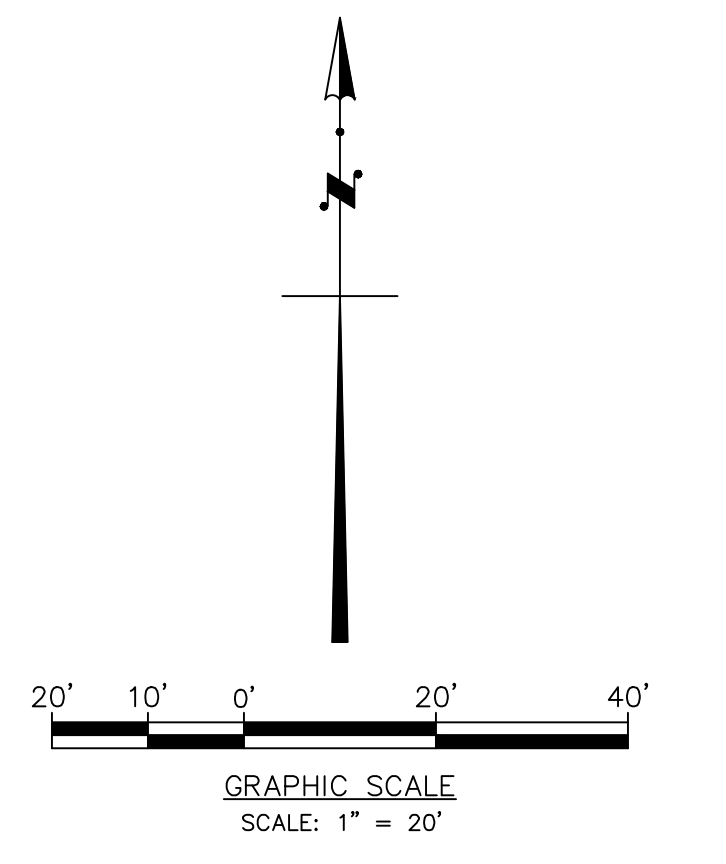
653.60' (666.00')

DUNSMUIR CANYON CHANNEL

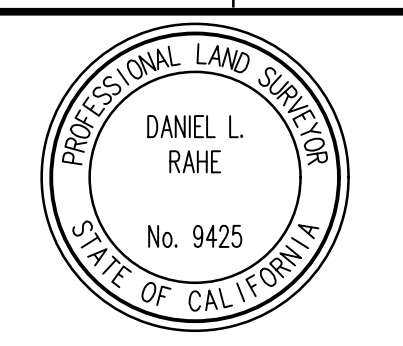
CLOUDSDALE AVE

BLOCK K, CRESCENTA CANADA

TRACT 13310, M.B. 303-33/34



MATCH LINE SEE SHEET 3 ABOVE



DESIGNED	SMB	
DRAWN	BBH	
CHECKED	DRH	04/21/20
REV	DATE	DESCRIPTION

REVISION	DATE	DESCRIPTION
LTL	DLR	ADDITIONAL UTILITY INFORMATION
BY	APPD	

(SEE VERTICAL CONTROL NOTE ON SHEET 1)

**PSOMAS**

555 South Flower Street, Suite 4300  
Los Angeles, CA 90071  
(213) 223-1400 (213) 223-1444 fax  
www.psomas.com

DATE: Apr. 22, 2020 - 16:46:21 DWG Name: W:\156150409\DESIGN\VL\PL-0502.dwg Updated By: toylar.kim

DESIGN SURVEY FOR:

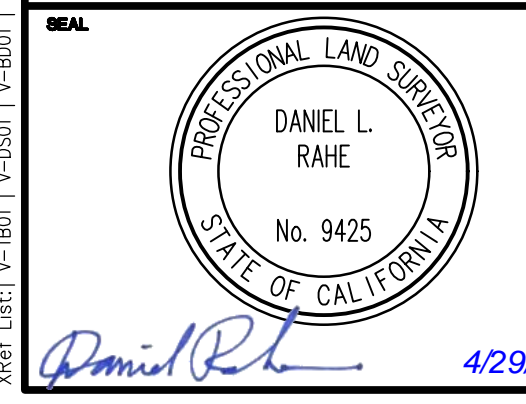
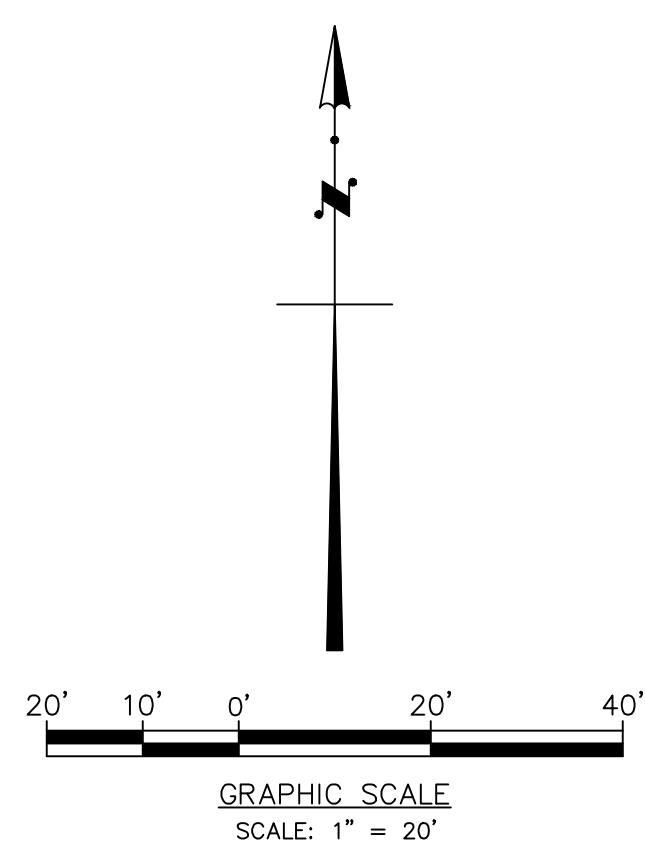
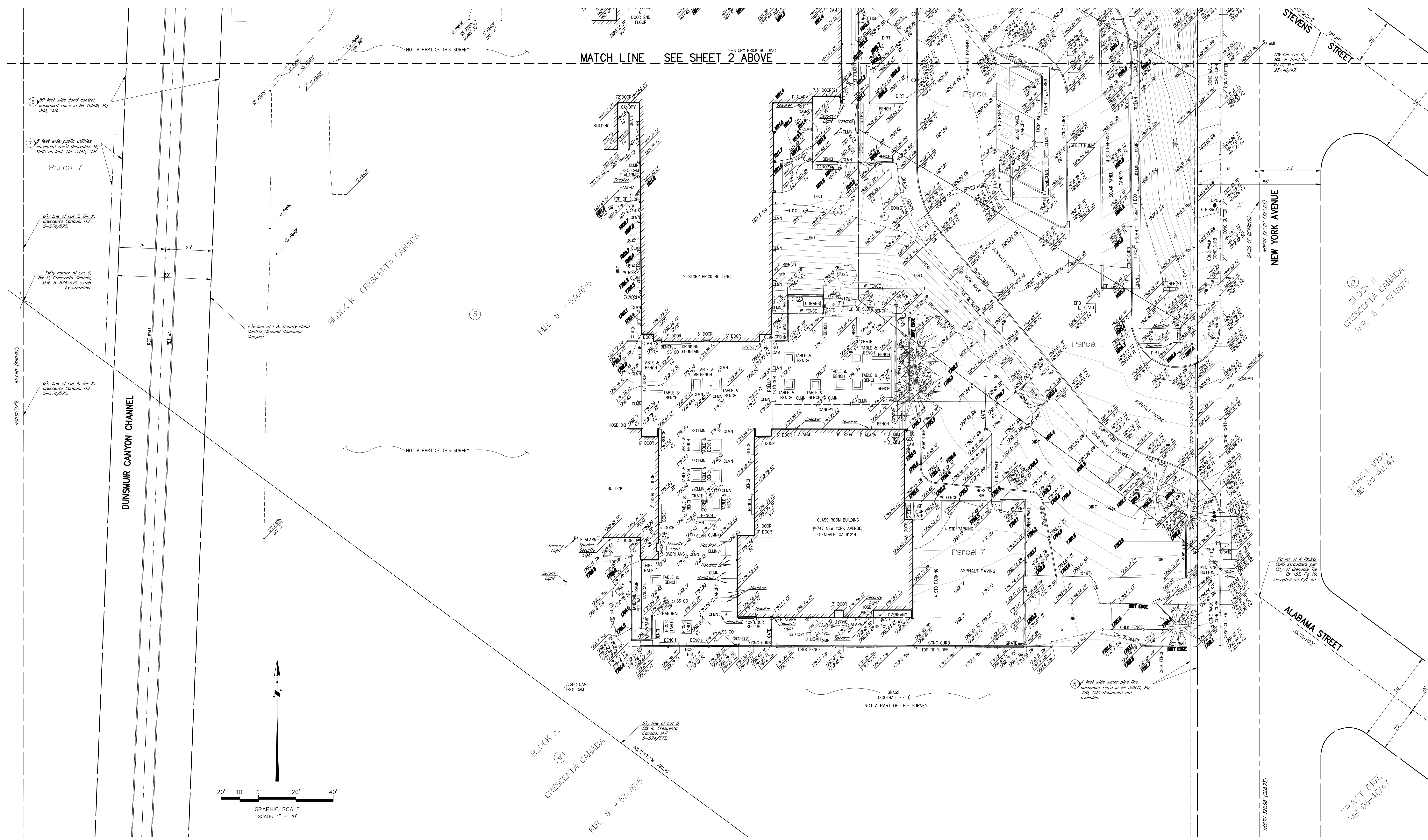
**GLENDALE UNIFIED SCHOOL DISTRICT**

ANDERSON W CLARK MAGNET HIGH SCHOOL

4747 NEW YORK AVENUE

IN THE CITY OF GLENDALE COUNTY OF LOS ANGELES STATE OF CALIFORNIA

DATE:	OCTOBER 24, 2019
SCALE:	1" = 20'
PROJECT NUMBER:	1GLE150400, T100
SHEET:	2 OF 3



DESIGNED	SMB				
DRAWN	BBH				
CHECKED	DRH	04/21/20			
REV	DATE	DESCRIPTION	LTL	DLR	APPD

BENCHMARK	
(SEE VERTICAL CONTROL NOTE ON SHEET 1)	
ELEVATION	
ADJUSTMENT	
PATHTYPE DATE	
Apr. 22, 2020 - 16:48:09 DWG Name: W:\16150400\SURVEY\DESIGN\PL\PL-0503.dwg Updated By: taylor.luo	

**PSOMAS**

555 South Flower Street, Suite 4300  
 Los Angeles, CA 90071  
 (213) 223-1400 (213) 223-1444 fax  
 www.psomas.com

DESIGN SURVEY FOR:  
**GLENDALE UNIFIED SCHOOL DISTRICT**  
 ANDERSON W CLARK MAGNET HIGH SCHOOL  
 4747 NEW YORK AVENUE  
 IN THE CITY OF GLENDALE COUNTY OF LOS ANGELES STATE OF CALIFORNIA

DATE	OCTOBER 24, 2019	SHEET	3
SCALE	1" = 20'		
PROJECT NUMBER	16LE150400, T100		3