



Balboa Elementary School
1844 Bel Aire Drive, Glendale, CA 91201

DESIGNER



837 North Spring Street / Third Floor / Los Angeles, CA 90007
Telephone (213) 959-3100 / Fax (213) 859-3100

CONSULTANTS

- ENV. ENGINEER: BREEN ENGINEERS
- STRUCTURAL ENGINEER: KPFF CONSULTING ENGINEERS
- MECHANICAL / PLUMBING / ELECTRICAL ENGINEER: BREEN ENGINEERS
- FIRE PROTECTION ENGINEER: BREEN ENGINEERS
- DOOR HARDWARE CONSULTANT: ARCHITECTURAL HARDWARE SERVICES

REGISTRATION

DAVID C. LEE R.C. E. THOBURN
WWW.BREEN-CA.COM

IDENTIFICATION STAMP
DIVISION OF STATE ARCHITECT
OFFICE OF REGULATION SERVICES
FILE NO. 15-41
APPL. NO. 03-10-363
AC FLS SS
DATE

ISSUE

05-04-2015 USA ADDENDUM #1

| MARK | DATE | DESCRIPTION |
|----------------------|----------|-------------|
| DESIGNER PROJECT NO. | | A1104.705 |
| DRAWN BY | EF | |
| CHECKED BY | JZ | |
| SCALE | 1" = 10' | |

KEY PLAN

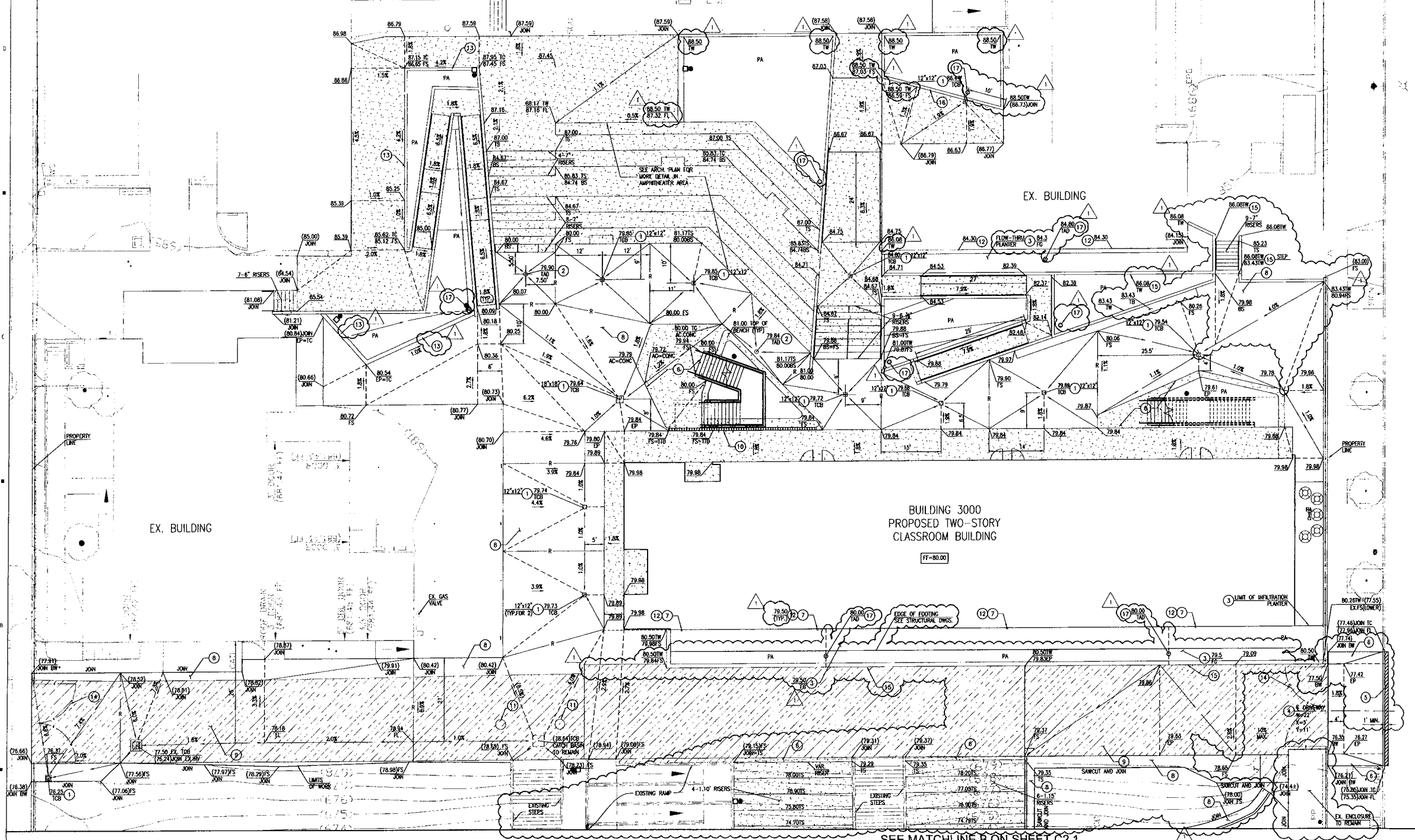
ATTEST:
DIV. OF THE STATE ARCHITECT
LOS ANGELES BASIN REGIONAL OFFICE
AC FLS SS
APPL. NO. 03-10-363
DATE 05/04/15
3-114363

SHEET TITLE

FINISH GRADING AND DRAINAGE PLAN

SHEET NUMBER

C2.0

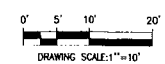


- LEGEND:**
- FIRE TRUCK RATED ASPHALT. REFER TO CONSTRUCTION NOTE 9 HEREON.
 - PEDESTRIAN CONCRETE. REFER TO CONSTRUCTION NOTE 6 HEREON.
 - PEDESTRIAN ASPHALT. REFER TO CONSTRUCTION NOTE 8 HEREON.
 - ACCESSIBLE PATH OF TRAVEL. REFER TO ARCHITECTURAL PLAN.

GENERAL NOTES:

*SURVEY PREPARED BY WESTERN STATES SURVEYING, INC. ON NOVEMBER 27, 2011. REFERENCES AN ARBITRARY BASIS OF BEARING POINT. CONTRACTOR TO VERIFY AND CONFIRM BASIS OF BEARING PRIOR TO CONSTRUCTION STAKING. REFER TO WESTERN STATES SURVEY PREPARED ON NOVEMBER 27, 2011.

- CONSTRUCTION NOTES:**
- CONSTRUCT CATCH BASIN PER DETAIL 4 ON SHEET C1.0.
 - CONSTRUCT AREA DRAIN PER DETAIL 10 ON SHEET C1.0.
 - CONSTRUCT FLOW-THROUGH PLANTER PER DETAIL 2 ON SHEET C1.1.
 - CONSTRUCT DRIVEWAY TYPE B PER SPPMC STD. PLAN 110-2.
 - CONSTRUCT ASPHALT PAVEMENT AND BASE TO MATCH EXISTING.
 - CONSTRUCT 4" CONCRETE PEDESTRIAN PAVEMENT PER DETAIL 8 ON SHEET C1.0.
 - DOWNSPOUT, SEE ARCHITECTURAL SHEET.
 - CONSTRUCT 3" ASPHALT PAVEMENT ON 3" AGGREGATE BASE PER DETAIL 3 ON SHEET C1.1.
 - CONSTRUCT 6" VEHICULAR ASPHALT PAVEMENT ON 6.5" AGGREGATE BASE PER DETAIL 4 ON SHEET C1.1. PAVEMENT TO HAVE ALL-WEATHER DRAWING CAPABILITIES AS PER GFC 502.2.3.
 - CONSTRUCT CONTECH SLOTTED DRAIN, OR EQUAL, PER DETAIL 8 ON SHEET C1.1.
 - CONSTRUCT TORRENT MAXWELL DRAINAGE SYSTEM OR EQUAL PER DETAIL 5 ON SHEET C1.2.
 - PROVIDE SPLASH BLOCK 12"x12"x4" THICK CONCRETE, ELEV.-TOP OF SPLASH BLOCK.
 - CONSTRUCT CONCRETE CURB PER DETAIL 7 ON SHEET C1.1.
 - CHAINLINK FENCE AND GATE PER ARCHITECTURAL PLANS.
 - RETAINING WALL PER ARCHITECTURAL PLANS.
 - SEAT WALL PER ARCHITECTURAL PLANS.
 - CONSTRUCT PLANTER AREA DRAIN PER DETAIL 10 ON SHEET C1.1.





Balboa Elementary School
1844 Bel Aire Drive, Glendale, CA 91201

DESIGNER

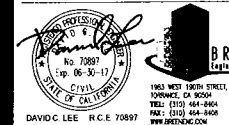


181 North Spring Street / Third Floor / Los Angeles, CA 90012
Telephone: (323) 639-3100 / Fax: (323) 639-3106

CONSULTANTS

- CIVIL ENGINEER
BREIN ENGINEERING
- STRUCTURAL ENGINEER
KPF CONSULTING ENGINEERS
- MECHANICAL / PLUMBING / ELECTRICAL ENGINEER
BREIN ENGINEERING
- FIRE PROTECTION ENGINEER
BREIN ENGINEERING
- DOOR HARDWARE CONSULTANT
ARCHITECTURAL HARDWARE SERVICES

REGISTRATION



AGENCY APPROVAL

IDENTIFICATION STAMP
DIVISION OF STATE ARCHITECT
OFFICE OF REGULATION SERVICES
FILE NO. 14-41
APPR. NO. 05-14363

AC _____ FLS _____ SS _____
DATE _____

ISSUE

05-04-2015 CSA ADDENDUM #1

MARK DATE DESCRIPTION

DESIGNER PROJECT NO. A11047.05

DRAWN BY EF

CHECKED BY JZ

SCALE 1" = 10'

KEY PLAN

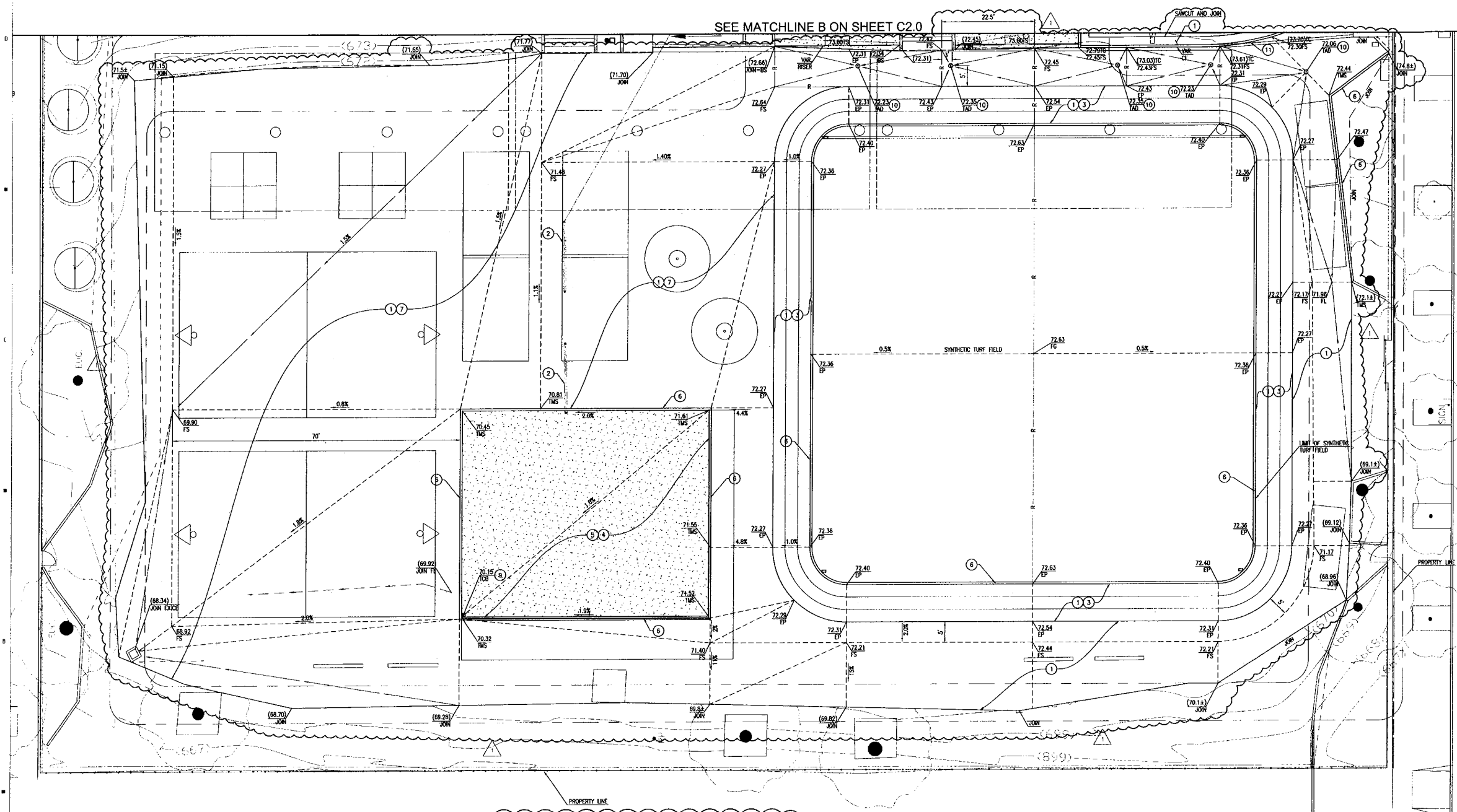
DIV. OF THE STATE ARCHITECT
LOS ANGELES BASIN REGIONAL OFFICE
AC _____ FLS _____ SS _____
APPR. NO. 05-14363
3 - 114363

SHEET TITLE

FINISH GRADING AND
DRAINAGE PLAN-FIELD

SHEET NUMBER

C2.1



LEGEND:

- FIRE TRUCK RATED ASPHALT. REFER TO CONSTRUCTION NOTE 9 HEREON.
- PEDESTRIAN CONCRETE. REFER TO CONSTRUCTION NOTE 6 HEREON.
- PEDESTRIAN ASPHALT. REFER TO CONSTRUCTION NOTE 8 HEREON.
- ACCESSIBLE PATH OF TRAVEL. REFER TO ARCHITECTURAL PLAN.

GENERAL NOTES:

1. REFERENCE SHEET C3.1 FOR SYNTHETIC TURF FIELD DRAINAGE LAYOUT.
2. SURVEY PREPARED BY WESTERN STATES SURVEYING, INC. ON NOVEMBER 27, 2011. REFERENCES AN ARBITRARY BASIS OF BEARING POINT. CONTRACTOR TO VERIFY AND CORRECT BASIS OF BEARING PRIOR TO CONSTRUCTION STAKING. REFER TO WESTERN STATES SURVEY PREPARED ON NOVEMBER 27, 2011.

CONSTRUCTION NOTES:

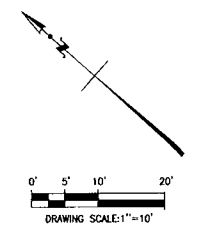
1. CONSTRUCT 3" ASPHALT PAVEMENT ON 3" AGGREGATE BASE PER DETAIL 3 ON SHEET C1.1.
2. REMOVE HANDRAIL WALLS PER ARCHITECTURE SHEET.
3. INSTALL ATHLETIC COURT SURFACING PER ARCHITECTURAL SPECIFICATIONS.
4. CONSTRUCT RUBBERIZED MAT SURFACE PER ARCHITECTURAL.
5. CONSTRUCT CONCRETE PAVING BENEATH RUBBERIZED SURFACING, 4" THICK PER DETAIL 8 ON SHEET C1.0.
6. CONSTRUCT MOWSTRIP PER DETAIL HEREON.
7. CONSTRUCT PLAYGROUND STRIPING PER ARCHITECTURAL.
8. NOT USED.
9. INSTALL CATCH BASIN BENEATH RUBBER SURFACING, SIMILAR TO DETAIL 4 ON SHEET C1.0.
10. CONSTRUCT AREA DRAIN PER DETAIL 10 ON SHEET C1.0.
11. CONSTRUCT CURB WALL PER DETAIL 6 ON SHEET C1.1.

1A RUBBERIZED SURFACE

1B PLANTING AREA

1C SYNTHETIC TURF

MOWSTRIP DETAIL NOT TO SCALE





Balboa Elementary School
1844 Bal Air Drive, Glendale, CA 91201

DESIGNER

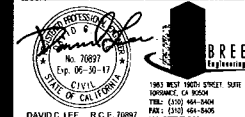


837 North Spring Street / Third Floor / Los Angeles, CA 90072
Telephone (323) 859-3800 / Fax (323) 859-3300

CONSULTANTS

- CIVIL ENGINEER: BREEN ENGINEERING
- STRUCTURAL ENGINEER: KPFF CONSULTING ENGINEERS
- MECHANICAL / PLUMBING / ELECTRICAL ENGINEER: BREEN ENGINEERING
- FIRE PROTECTION ENGINEER: BREEN ENGINEERING
- DOOR HARDWARE CONSULTANT: ARCHITECTURAL HARDWARE SERVICES

REGISTRATION



AGENCY APPROVAL

IDENTIFICATION STAMP
DIVISION OF STATE ARCHITECT
OFFICE OF REGULATION SERVICES
FILE NO. 18-21
APPL. NO. 03-14363

AC: _____ PLS: _____ SS: _____
DATE: _____

ISSUE

| | | |
|---|------------|------------------|
| 1 | 05-04-2015 | ISSA ADDENDUM #1 |
|---|------------|------------------|

MARK DATE DESCRIPTION

| | |
|----------------------|------------|
| DESIGNER PROJECT NO. | A1104.7.05 |
| DRAWN BY | EF |
| CHECKED BY | JZ |
| SCALE | 1" = 10' |

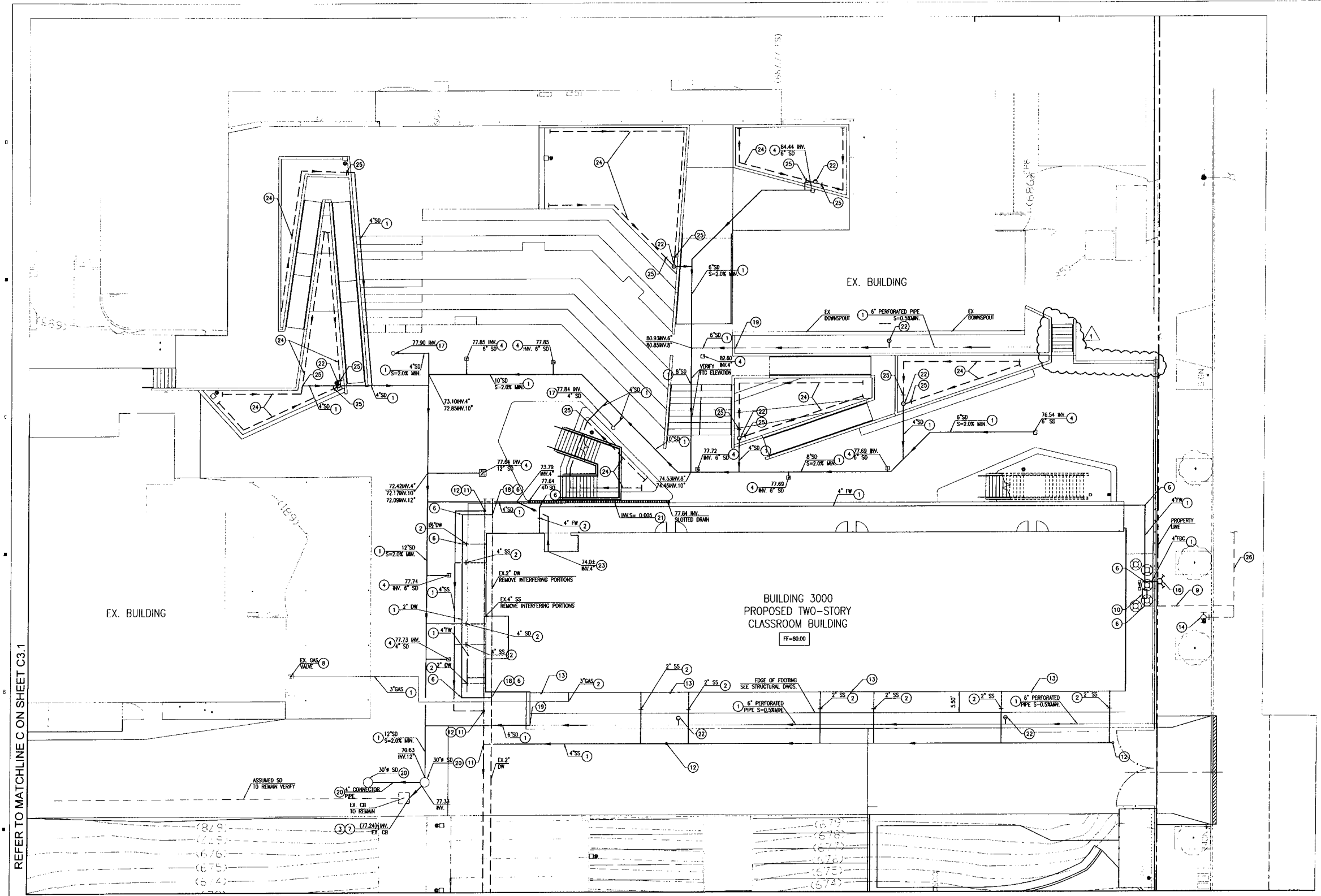
KEY PLAN

ARTIST
DIV. OF THE STATE ARCHITECT
LOS ANGELES BASIN REGIONAL OFFICE
AC: _____ PLS: _____ SS: _____
APPL. NO. 03-14363
3-114363

SITE UTILITIES PLAN

SHEET NUMBER

C3.0



REFER TO MATCHLINE C ON SHEET C3.1

REFER TO MATCHLINE B ON SHEET C3.1

GENERAL NOTES:

- AS REQUIRED BY THE GLENDALE WATER AND POWER (GWP), ALL EXISTING WATER SERVICE LINES SHALL BE UPGRADED WITH A NEW BACKFLOW PREVENTER DEVICE, UNLESS ON EXISTING SERVICE EXISTS, AS SPECIFIED BY GWP. CONTRACTORS SHALL VERIFY ALL EXISTING SERVICE LOCATIONS AND COORDINATE INSTALLATION WITH GWP.
- SURVEY PREPARED BY WESTERN STATES SURVEYING, INC. ON NOVEMBER 17, 2011. REFERENCES ON ARBITRARY POINTS. CONTRACTOR TO VERIFY SURVEY PRIOR TO CONSTRUCTION. BREEN ENGINEERING WILL NOT BE LIABLE FOR ACCURACY OF SURVEY.
- UTILITY LOCATIONS, SIZES AND INVERTS WERE DETERMINED FROM RECORD DRAWINGS. ACTUAL LOCATIONS, SIZES AND ELEVATIONS SHALL BE VERIFIED BY THE CONTRACTOR PRIOR TO CONSTRUCTION. ANY DISCREPANCIES SHALL BE REPORTED TO THE ENGINEER.

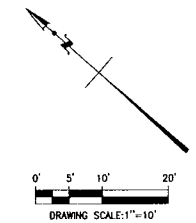
*CONTRACTOR SHALL OBTAIN SEPARATE PERMIT FROM THE CITY OF GLENDALE FOR ITEMS DESIGNATED

CONSTRUCTION NOTES: (LEFT)

- CONSTRUCT UTILITY IN TRENCH PER DETAIL 1 ON SHEET C1.0
- CONNECT TO BUILDING UTILITY PER PLUMBING PLAN.
- CONTRACTOR TO VERIFY INVERT ELEVATIONS, LOCATION AND SIZE OF EXISTING STORM DRAINS PRIOR TO CONSTRUCTION.
- CONSTRUCT CATCH BASIN PER NOTE 1 ON SHEET C2.0.
- PROVIDE AND INSTALL 2" REDUCED PRESSURE BACKFLOW ASSEMBLY PER GLENDALE WATER & POWER STD. PLAN 6528-A. REFER TO DETAIL 1 ON SHEET C1.1.
- CONSTRUCT THRUST BLOCK PER DETAIL 7 ON SHEET C1.0.
- CONNECT TO EXISTING CATCH BASIN PER DETAIL 6 ON SHEET C1.2. CONTRACTOR TO VERIFY INVERT ELEVATIONS AND LOCATIONS PRIOR TO CONSTRUCTION.
- CONNECT TO EXISTING CAMPUS UTILITY WITH STANDARD FITTINGS.
- GWP WILL CONNECT NEW WATER SERVICE TO EXISTING MAIN AND CONSTRUCT NEW 4" LATERAL. CONTRACTOR SHALL COORDINATE WITH GLENDALE WATER & POWER AND SHALL BE RESPONSIBLE FOR ALL PERMITS AND CONNECTION FEES.

- CONSTRUCT 4" DOUBLE CHECK DETECTOR ASSEMBLY PER GWP GUIDELINES, PER DETAIL 5 ON SHEET C1.1. REFER TO SPEC 221113, FACILITY WATER DISTRIBUTION.
- CONNECT TO EXISTING CAMPUS SEWER. ACTUAL SEWER LOCATION, SIZE AND ELEVATION SHALL BE VERIFIED BY THE CONTRACTOR PRIOR TO CONSTRUCTION.
- CONSTRUCT CLEANOUT IN YARD BOX PER DETAIL 2 ON C1.0.
- DOWNSPOUT PER ARCHITECT.
- PUBLIC FIRE HYDRANT BY GWP.
- PROVIDE AND INSTALL GATE VALVE. PROVIDE INDICATOR POST WHERE NOTED PV.
- PROVIDE AND INSTALL FIRE DEPARTMENT CONNECTION MOUNTED ON WALL. PROVIDE 4" WATER CHECK VALVE IMMEDIATELY DOWNSTREAM.
- CONSTRUCT AREA DRAIN PER NOTE 2 ON SHEET C2.0.
- CONNECT TO EXISTING CAMPUS WATER. ACTUAL WATER LOCATION, SIZE AND ELEVATION SHALL BE VERIFIED BY CONTRACTOR PRIOR TO CONSTRUCTION.
- CONNECT TO FLOW-THROUGH PLANTER PERFORATED PIPE. SEE NOTE 3 ON SHEET C2.0.

- INSTALL TORRENT MAXWELL DRAINAGE SYSTEM OR EQUAL PER NOTE 11 SHEET C2.0.
 - CONSTRUCT SLOTTED DRAIN PER NOTE 10 ON SHEET C2.0.
 - CONSTRUCT PLANTER AREA DRAIN PER NOTE 17 ON SHEET C2.0.
 - CONNECT TO ELEVATOR SUBDRAIN PER A1.03. TRANSITION TO SOLID PIPE.
 - SUBDRAIN PER ARCHITECTURAL PLANS. S=0.5% MIN.
 - TRANSITION TO SOLID PIPE.
 - NEW MAIN FROM BEL AIRE. SIZE, DESIGN AND INSTALLATION BY GWP.
- *NOTES NOT USED NOT ON THIS SHEET
- LEGEND:
 - - - - - REMOVE AND RELOCATE EXISTING CAMPUS UTILITY.





DESIGNER



837 North Spring Street / Third Floor / Los Angeles, CA 90012
Telephone (323) 859 3100 / Fax (323) 859 3110

CONSULTANTS

CIVIL ENGINEER
BREEN ENGINEERING
STRUCTURAL ENGINEER
KOPFF CONSULTING ENGINEERS
Mechanical / Plumbing / Electrical Engineer
BREEN ENGINEERING

FIRE PROTECTION ENGINEER
BREEN ENGINEERING

DOOR HARDWARE CONSULTANT
ARCHITECTURAL HARDWARE SERVICES

REGISTRATION



AGENCY APPROVAL

IDENTIFICATION STAMP
DIVISION OF STATE ARCHITECT
OFFICE OF REGULATION SERVICES
FILE NO. 19-41
APPL. NO. 03-14363
AC: FLS SS
DATE

ISSUE

5-1-15 DSA ADDENDUM #1
8-3-15 BULLETIN 3
10-22-15 ASK-001

MARK DATE DESCRIPTION

DESIGNER PROJECT NO. A1104.7.05

DRAWN BY Author

CHECKED BY Checker

SCALE As indicated

KEY PLAN

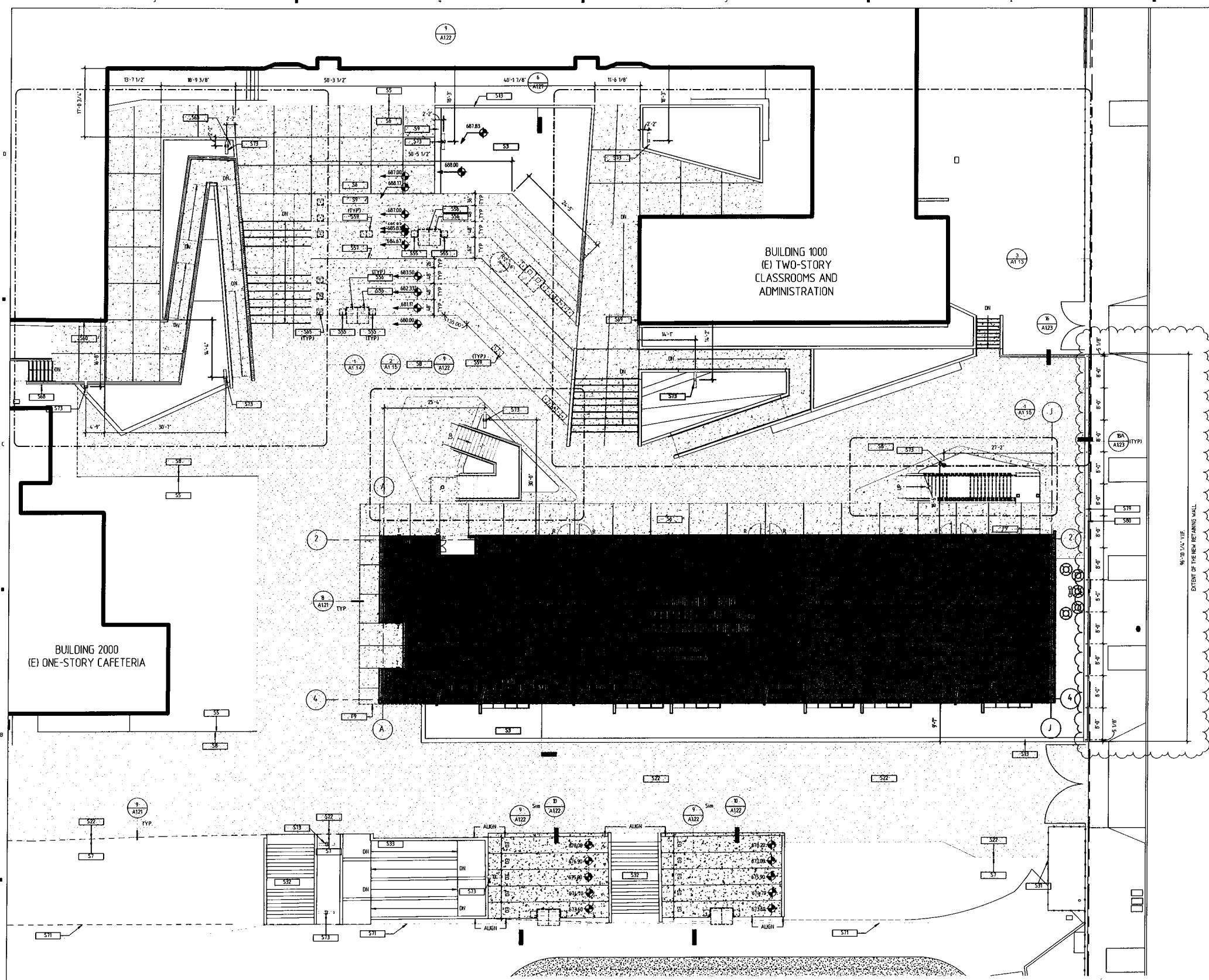
REF: R066 - 10/22/15
ASK 001 - 10/22/15

SHEET TITLE

PARTIAL SITE PLAN @
BUILDING

SHEET NUMBER

A1.12



1 ENLARGED SITE PLAN @ BUILDING
SCALE 1" = 10'-0"

KEYNOTES

| KEY | TEXT |
|-----|--|
| E14 | DOWNSPOUT |
| E15 | FIBER CEMENT BOARD HORIZ. SUN SHADE 10/7/021 |
| F9 | LINE OF FLOOR ABOVE |
| S3 | PLANTING AREA |
| S5 | 10' CONCRETE PAVING |
| S6 | CONCRETE PAVING |
| S7 | 10' ASPHALT PAVING |
| S8 | ASPHALT PAVING |
| S9 | CONCRETE BENCH SEE 4/A122 |
| S13 | CONCRETE RETAINING WALL SEE 4/5503 |
| S22 | FIRE TRUCK RATED ASPHALT |
| S31 | 10' CHAIN LINK FENCE |
| S32 | 10' CONCRETE STAIRS |

| KEY | TEXT |
|-----|--|
| S33 | 10' CONCRETE RAMP |
| S55 | COMPANION SEAT |
| S56 | ACCESSIBLE WHEELCHAIR SPACE WITH 15A SIGN (33'x48') |
| S57 | WHEEL GUARD RAIL SEE 16/A123 |
| S59 | SEMI-AMBULATORY SEATING AREA |
| S60 | ADA DIRECTIONAL SIGNAGE, WALL MOUNT PER 8E/A1000 |
| S65 | ASLE SEAT WITH 15A SIGN |
| S68 | ADA DIRECTIONAL SIGNAGE, POLE MOUNT PER 8E/A1000 AND 9/A1000 |
| S69 | AMBULATORY SEATING SIGN SEE 20/A1000 |
| S71 | 10' PV CANOPY |
| S73 | POLE-MOUNTED SITE LIGHT, SEE 5/A121 AND E-10 |
| S79 | CHARBARK FENCE |
| S80 | CONCRETE RETAINING WALL SEE WALL TYPE R4 4/5503 |

ACCESS CALCULATIONS

518' OF AMPHITHEATER SEATING
18' PER SEAT
518 / 18 = 28.78'
518 x 12' = 6,222'
4,212' / 18' PER SEAT = 345.33 = 346 SEATS
346 SEATS REQUIRES
6 ADA SEATS
6 COMPANION SEATS
1% OF 346 = 3.46 = 4 SEMI-AMBULATORY SEATS
1% OF 346 = 3.46 = 4 ASLE SEATS
NOTE: NO SEATS HAVE AN ARMREST OR
ASLES

LEGEND

- EXISTING BUILDING
- NEW BUILDING
- CONCRETE PAVING
- EXISTING A/C PAVING
- A/C PAVING
- PLANTING AREA
- ARTIFICIAL TURF
- ATHLETIC SURFACE COATING
- RUBBERIZED TLE SURFACING
- LIMIT OF WORK

10/22/2015 9:58:57 AM



Balboa Elementary School
1844 Bel Aire Drive, Glendale, CA 91201

DESIGNER

osborn

837 North Spring Street / Third Floor / Los Angeles, CA 90012
Telephone (213) 859 3300 / Fax (213) 859 3110

CONSULTANTS

CIVIL ENGINEER
GREEN ENGINEERING
STRUCTURAL ENGINEER
OFFICE CONSULTING ENGINEERS
MECHANICAL / PLUMBING / ELECTRICAL ENGINEER
GREEN ENGINEERING
FIRE PROTECTION ENGINEER
GREEN ENGINEERING
DOOR HARDWARE CONSULTANT
ARCHITECTURAL HARDWARE SERVICES

REGISTRATION



AGENCY APPROVAL

IDENTIFICATION STAMP
DIVISION OF STATE ARCHITECTS
OFFICE OF REGULATION SERVICES
FILE NO. 10-11
APPL. NO. 03-114363
AC _____ FLS _____ SS _____
DATE _____

ISSUE

5-4-15 USA ADDENDUM #1

MARK DATE DESCRIPTION

DESIGNER PROJECT NO. A11047105

DRAWN BY Author

CHECKED BY Checker

SCALE: As indicated

KEY PLAN

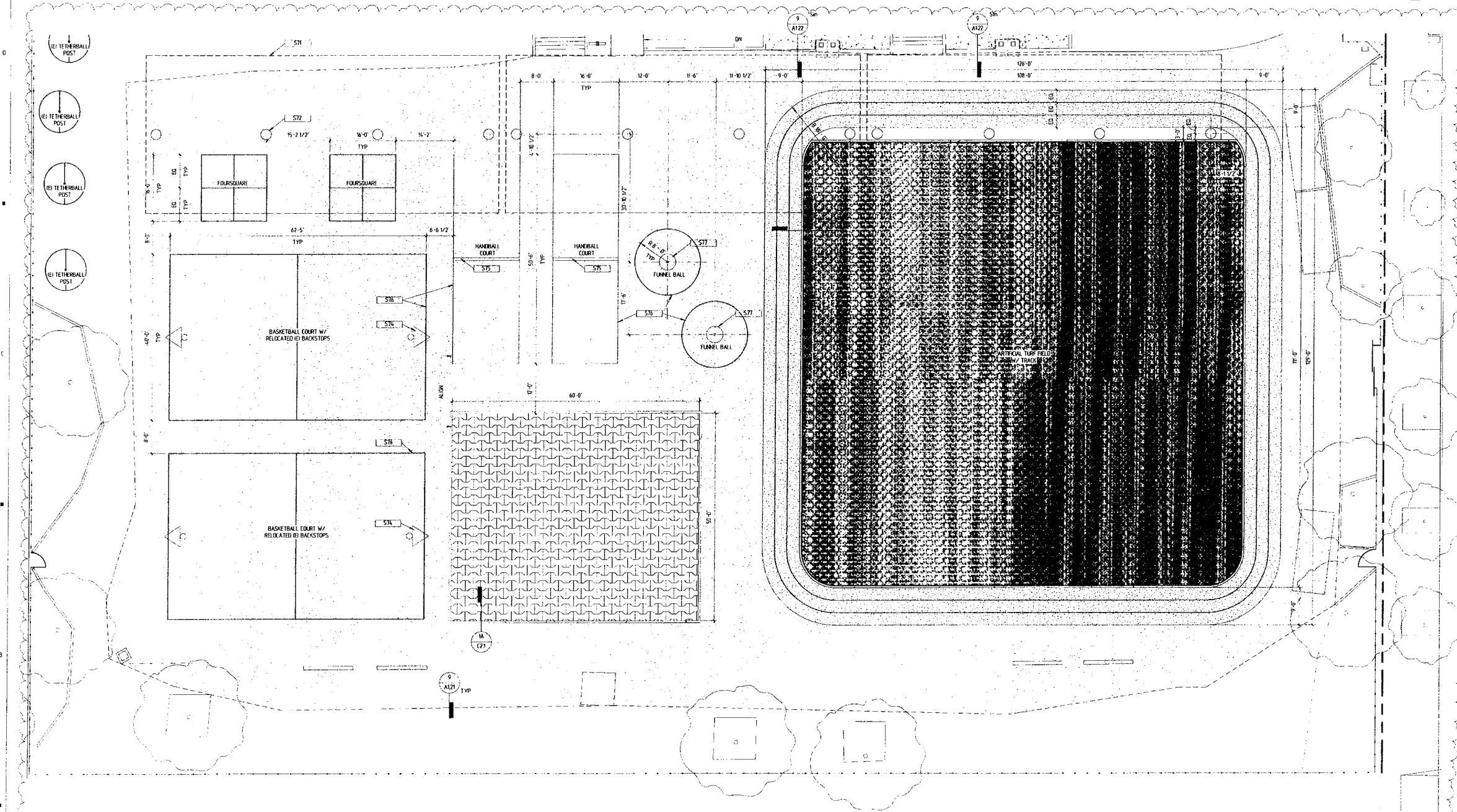
DIV. OF THE STATE ARCHITECTS
LOS ANGELES BASIN REGIONAL OFFICE
AC _____ FLS _____ SS _____
APPL. NO. 03-114363
3-114363

SHEET TITLE

PARTIAL SITE PLAN @ FIELD

SHEET NUMBER

A1.16



1 ENLARGED SITE PLAN @ FIELD
SCALE 1" = 8'-0"

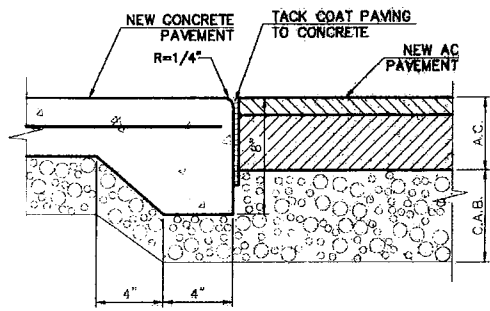
KEYNOTES

| KEY | TEXT |
|-----|--|
| S71 | 8' BY 6' CANOPY |
| S72 | 16' STEEL COLUMN/CONCRETE BASE |
| S74 | RELOCATED 10 BASKETBALL BACKSTOP & GOAL. SEE 6/A121 FOR FOUNDATION DETAIL. |
| S75 | HANDBALL COURT WALL. SEE 7/A121 |
| S76 | PAVEMENT STRIPING |
| S77 | FUNNEL BALL EQUIPMENT. SEE 6/A121 FOR FOUNDATION DETAIL. |

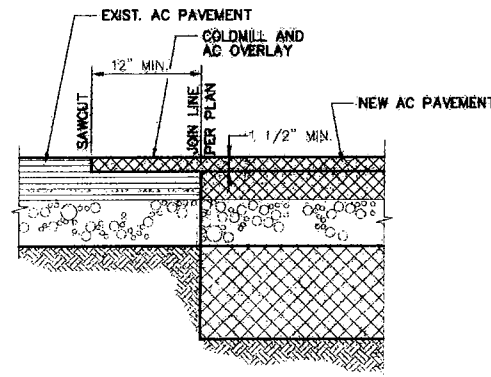
LEGEND

| | |
|----------|---------------------------|
| [Symbol] | EXISTING BUILDING |
| [Symbol] | NEW BUILDING |
| [Symbol] | CONCRETE PAVING |
| [Symbol] | EXISTING A/C PAVING |
| [Symbol] | A/C PAVING |
| [Symbol] | PLANTING AREA |
| [Symbol] | ARTIFICIAL TURF |
| [Symbol] | ATHLETIC SURFACE COATING |
| [Symbol] | RUBBERIZED TALE SURFACING |
| [Symbol] | LIMIT OF WORK |

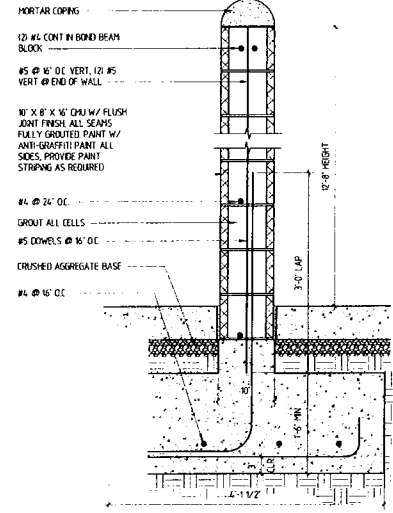
8/17/2015 10:50 AM



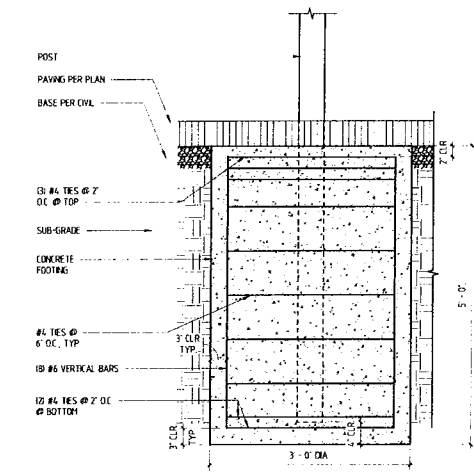
8 AC TO CONCRETE PAVEMENT TRANSITION
SCALE: NTS



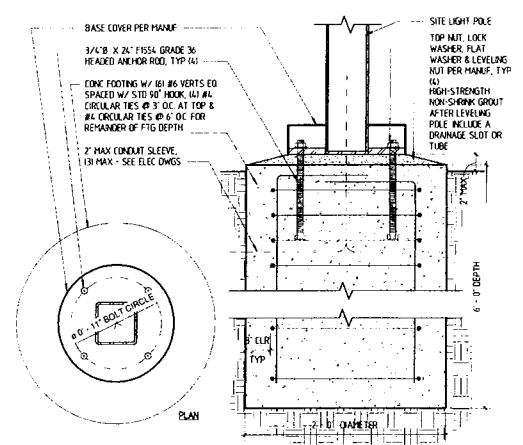
9 AC PAVEMENT JOINT
SCALE: NTS



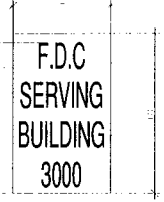
7 HANDBALL WALL DETAIL
SCALE: 1/2\"/>



6 BASKETBALL BACKSTOP/FUNNELBALL POST FOUNDATION
SCALE: 1/2\"/>



5 SITE LIGHT POLE FOUNDATION
SCALE: 1/2\"/>



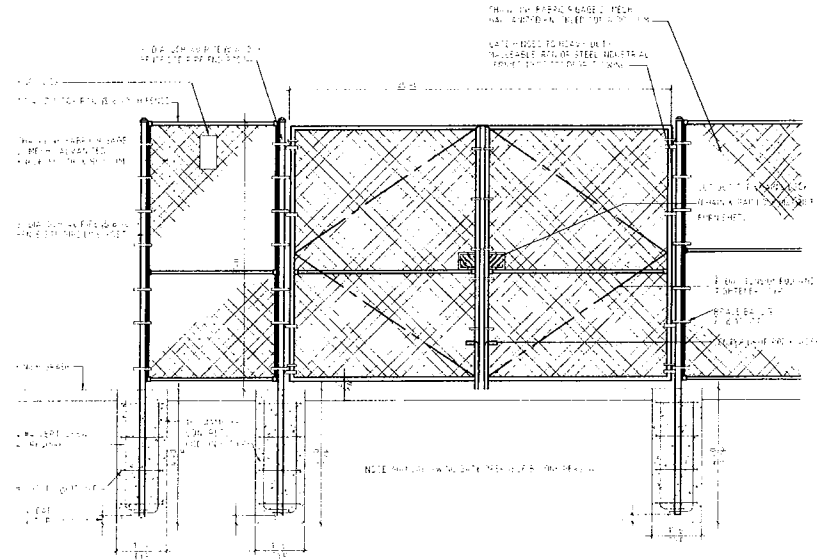
1. METAL REFLECTORIZED SIGN
2. SIZE: MINIMUM 12\"/>
- 3. MINIMUM 3\"/>
- 4. WHITE BACKGROUND WITH RED LETTERING
- 5. BOTTOM OF THE SIGN SHALL BE 7'-0\"/>

4 F.D.C. SIGNAGE
SCALE: 3/16\"/>



1. METAL REFLECTORIZED SIGN
2. SIZE: MINIMUM 12\"/>
- 3. MINIMUM 3\"/>
- 4. WHITE BACKGROUND WITH RED LETTERING
- 5. BOTTOM OF THE SIGN SHALL BE 7'-0\"/>

3 FIRE ACCESS SIGN
SCALE: 3/16\"/>



2 CHAIN LINK FENCE DETAIL
SCALE: 1/2\"/>



1. METAL REFLECTORIZED SIGN
2. SIZE: MINIMUM 12\"/>
- 3. MINIMUM 3\"/>
- 4. WHITE BACKGROUND WITH RED LETTERING
- 5. BOTTOM OF THE SIGN SHALL BE 7'-0\"/>

1 FIRE LANE SIGN
SCALE: 3/16\"/>



Balboa Elementary School
1844 Bel Aire Drive, Glendale, CA 91201

DESIGNER



877 North Spring Street / Third Floor / Los Angeles, CA 90012
Telephone (323) 859-3100 / Fax (323) 859-3100

CONSULTANTS

- CIVIL ENGINEER
- GREEN ENGINEERING
- STRUCTURAL ENGINEER
- OFFICE CONSULTING ENGINEERS
- MECHANICAL / PLUMBING / ELECTRICAL ENGINEER
- GREEN ENGINEERING
- FIRE PROTECTION ENGINEER
- GREEN ENGINEERING
- DOOR HARDWARE CONSULTANT
- ARCHITECTURAL HARDWARE SERVICES

REGISTRATION



AGENCY APPROVAL

IDENTIFICATION STAMP
DIVISION OF STATE ARCHITECT
OFFICE OF REGULATION SERVICES
FILE NO. 19-41
APPL. NO. 09-114363
AC FLS SS
DATE

ISSUE

5-14-15 DSA ADDENDUM #1

MARK DATE DESCRIPTION

DESIGNER PROJECT NO. A1047.05
DRAWN BY: Author
CHECKED BY: Checker
SCALE: As Indicated

KEY PLAN

Div. of the State Architect
LOS ANGELES BASIN REGIONAL OFFICE
AC FLS SS
APPL. NO. 15-114363
3-114363

SHEET TITLE

SITE DETAILS

SHEET NUMBER

A121



Balboa Elementary School
1844 Bel Aire Drive, Glendale, CA 91201

DESIGNER

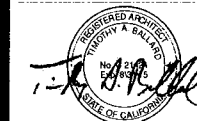


837 North Spring Street / Third Floor / Los Angeles, CA 90012
Telephone (323) 859-3100 / Fax (323) 859-3110

CONSULTANTS

- CIVIL ENGINEER: BRENN ENGINEERING
- STRUCTURAL ENGINEER: KPF CONSULTING ENGINEERS
- MECHANICAL / PLUMBING / ELECTRICAL ENGINEER: BRENN ENGINEERING
- FIRE PROTECTION ENGINEER: BRENN ENGINEERING
- DOOR HARDWARE CONSULTANT: ARCHITECTURAL HARDWARE SERVICES

REGISTRATION



AGENCY APPROVAL

IDENTIFICATION STAMP
DIVISION OF STATE ARCHITECT
OFFICE OF REGULATION SERVICES
FILE NO. 19-41
APPL. NO. 03-114-363
AC: FLS SS
DATE:

ISSUE

1 5-4-15 DSA ADDENDUM #1

MARK DATE DESCRIPTION

DESIGNER PROJECT NO. AT104705

DRAWN BY: Author

CHECKED BY: Checker

SCALE: As indicated

KEY PLAN

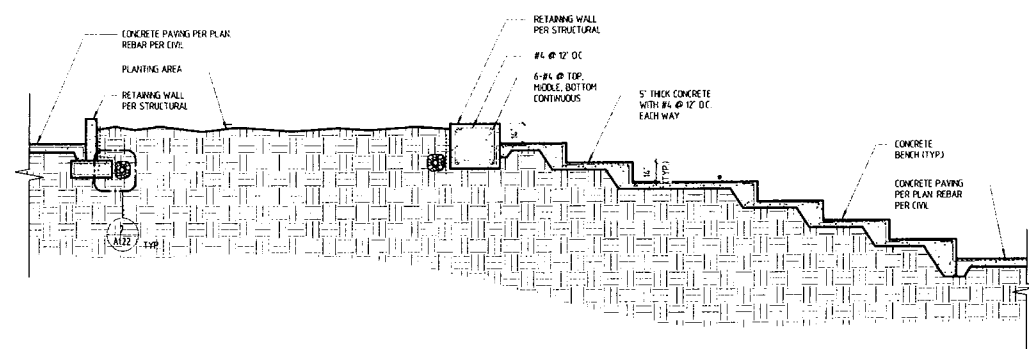
AT104705
DIV. OF THE STATE ARCHITECT
LOS ANGELES BASIN REGIONAL OFFICE
AC: FLS SS
APPL. NO. 1-14363
3-1-14 363

SHEET TITLE

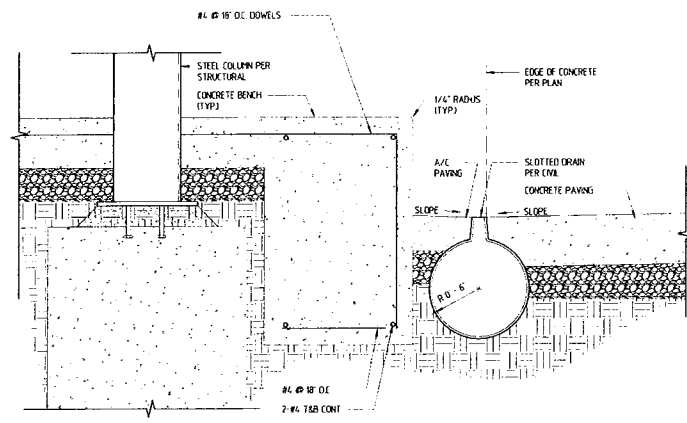
SITE DETAILS

SHEET NUMBER

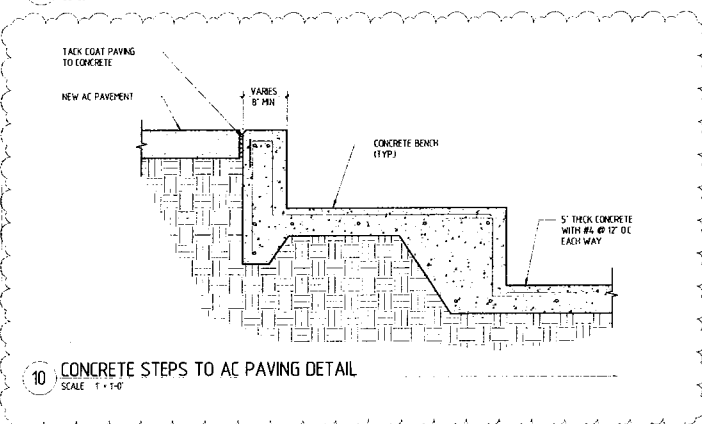
A1.22



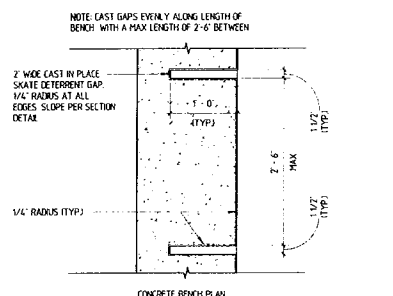
9 SECTION THROUGH SEATING AREA
SCALE 1/4" = 1'-0"



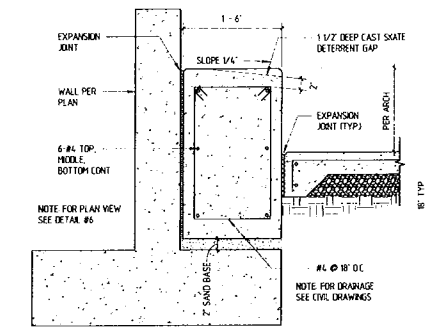
8 SLOTTED DRAIN DETAIL
SCALE 1 1/2" = 1'-0"



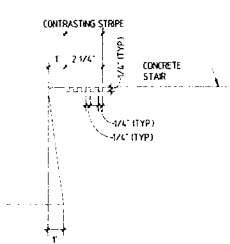
10 CONCRETE STEPS TO AC PAVING DETAIL
SCALE 1" = 1'-0"



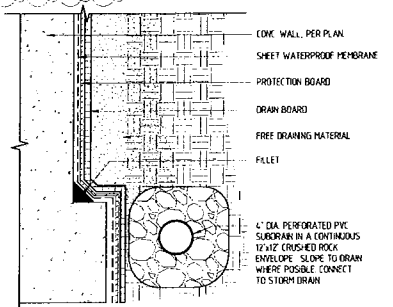
6 CONCRETE BENCH DETAIL
SCALE 1" = 1'-0"



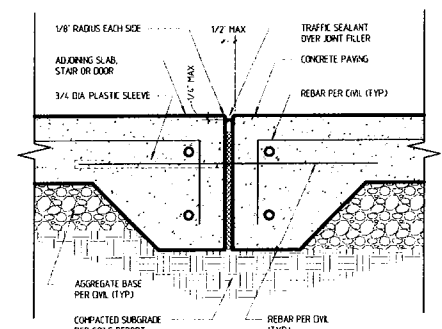
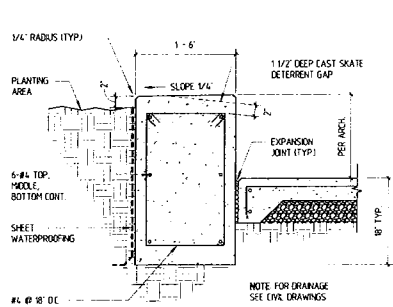
12 CONCRETE BENCH @ WALL
SCALE 1" = 1'-0"



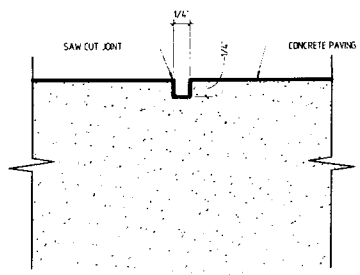
11 STAIR NOSING DETAIL
SCALE 3" = 1'-0"



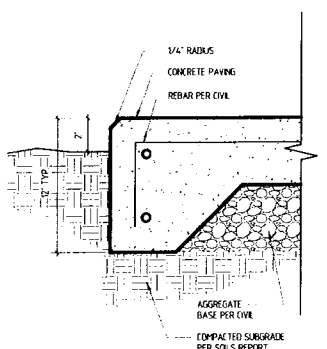
7 WALL DRAINAGE DETAIL
SCALE 1 1/2" = 1'-0"



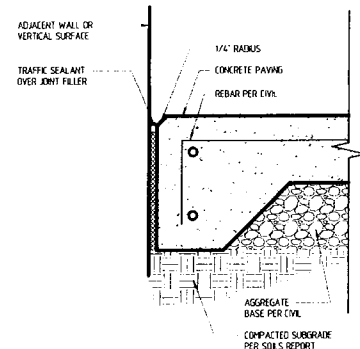
5 EXPANSION JOINT
SCALE 3" = 1'-0"



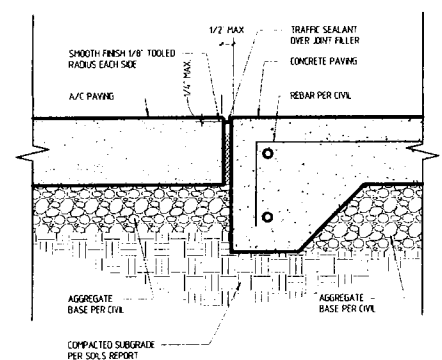
4 CONTROL JOINT
SCALE 12" = 1'-0"



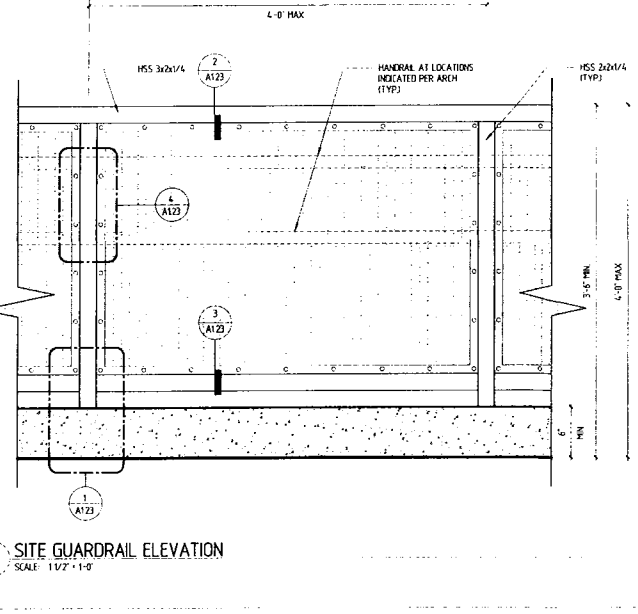
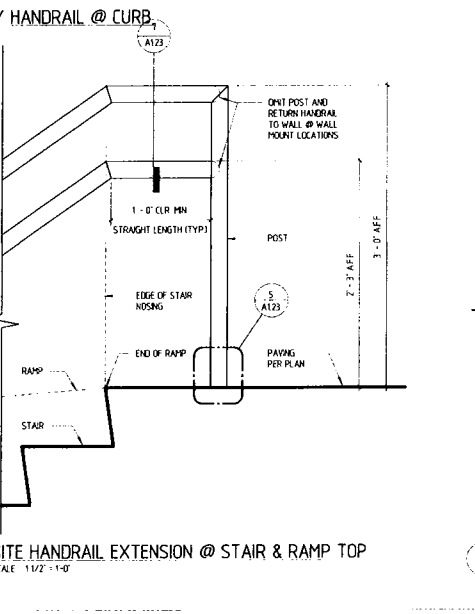
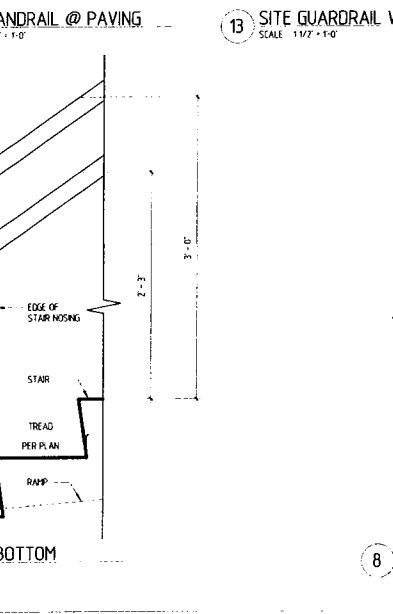
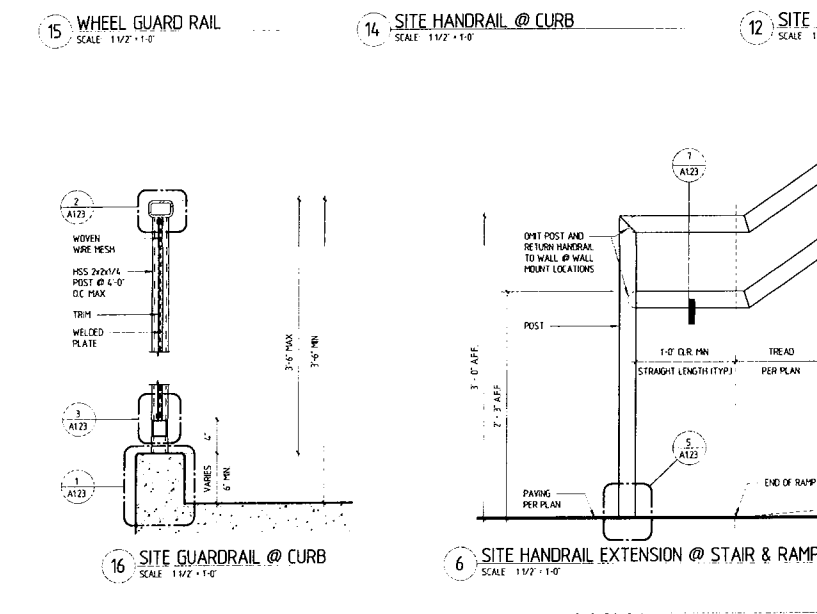
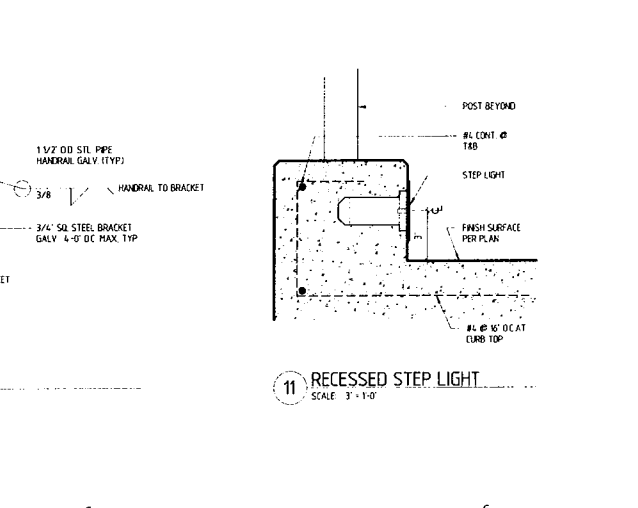
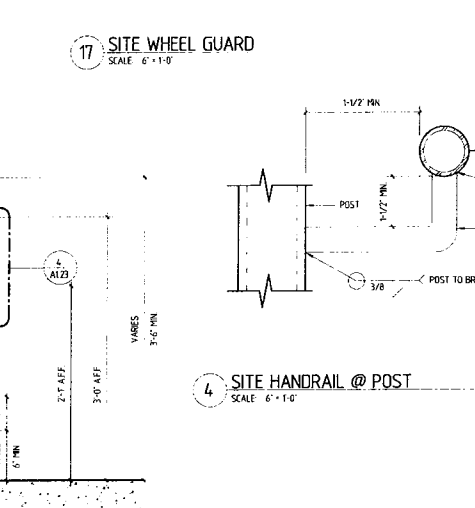
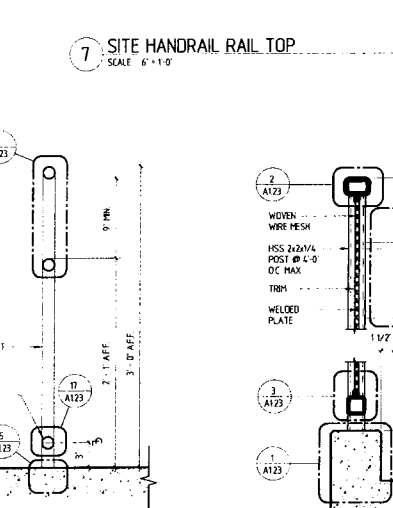
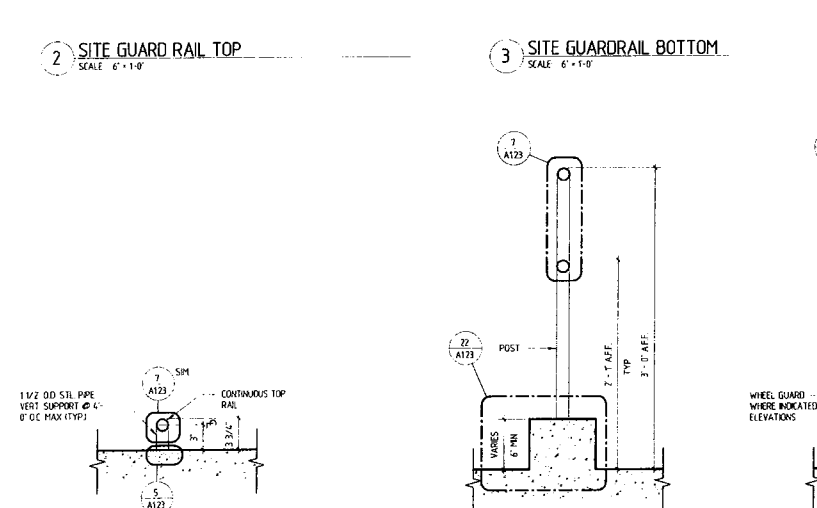
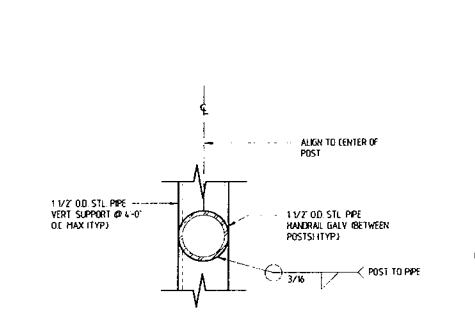
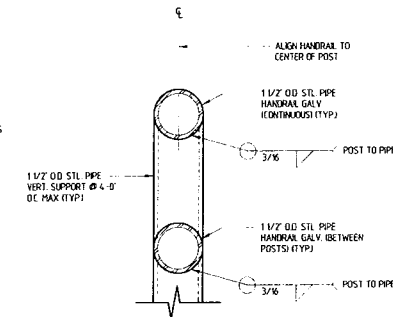
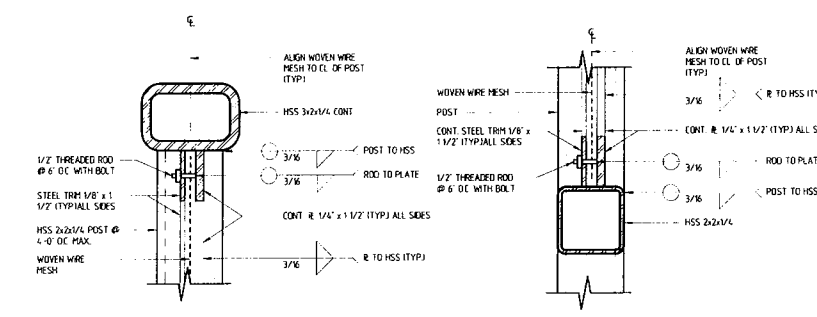
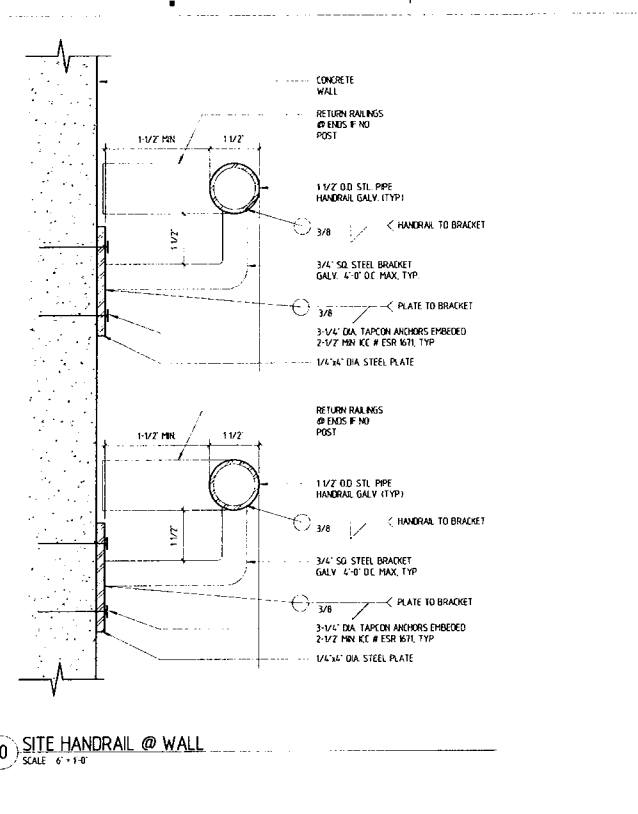
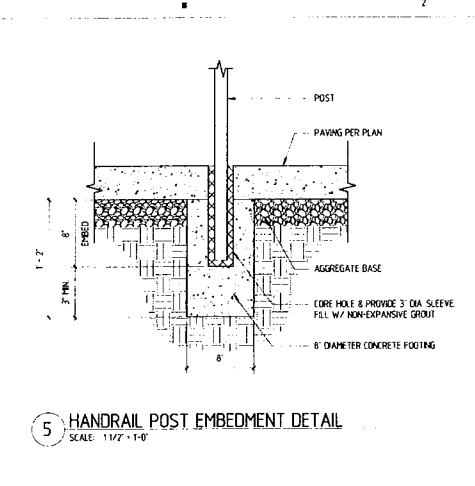
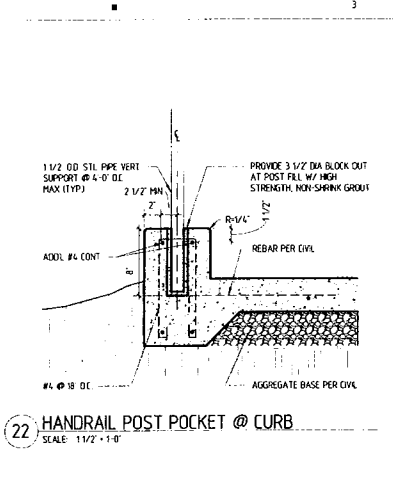
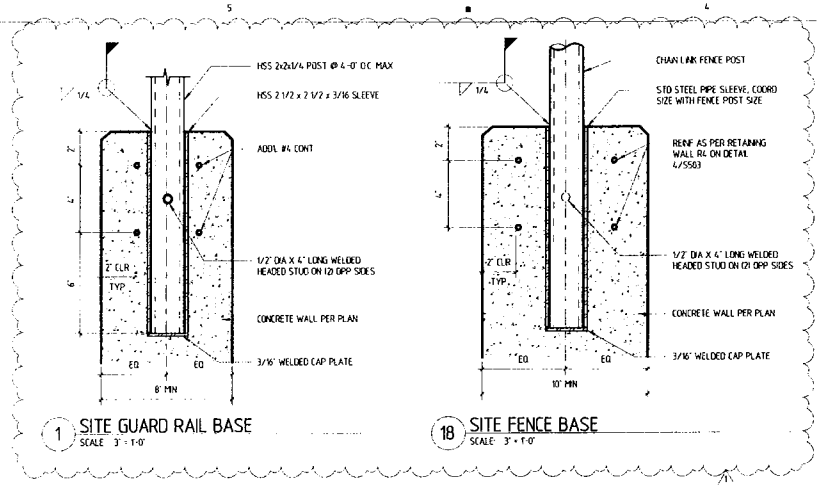
3 TYP. SLAB EDGE
SCALE 3" = 1'-0"



2 EXPANSION JOINT AT WALL
SCALE 3" = 1'-0"



1 A/C & CONCRETE SLAB TRANSITION
SCALE 3" = 1'-0"



Glendale Unified School District



Balboa Elementary School
1844 Bel Aire Drive, Glendale, CA 91201



837 North Spring Street / Third Floor / Los Angeles, CA 90012
Telephone (323) 859-7000 / Fax (323) 859-3100

DESIGNER
CONSULTANTS
CIVIL ENGINEER
GREEN ENGINEERING
STRUCTURAL ENGINEER
MECHANICAL / PLUMBING / ELECTRICAL ENGINEER
GREEN ENGINEERING
FIRE PROTECTION ENGINEER
GREEN ENGINEERING
DOOR HARDWARE CONSULTANT
ARCHITECTURAL HARDWARE SERVICES



AGENCY APPROVAL
IDENTIFICATION STAMP
DIVISION OF STATE ARCHITECT
OFFICE OF REGULATION SERVICES
FILE NO. 19-41
APP. NO. 03-114-363
AC FLS SS
DATE

ISSUE

| | | |
|---|--------|-----------------|
| 1 | 5-4-05 | DSA ADDENDUM #1 |
|---|--------|-----------------|

MARK DATE DESCRIPTION
DESIGNER PROJECT NO. A11047.05
DRAWN BY: Author
CHECKED BY: Checker
SCALE: As indicated

KEY PLAN
DIV. OF THE STATE ARCHITECT
LOS ANGELES BASIN REGIONAL
AC FLS SS
APPEL NO. 03-114-363
3-114363

SHEET TITLE
SITE DETAILS

SHEET NUMBER
A1.23

7/26/2016 10:30:03 PM