

GENERAL RCP NOTES

1. LIGHT FIXTURES TO AVOID MECHANICAL EQUIPMENT. COORDINATE EXACT LOCATION IN FIELD WITH ARCHITECT.
2. GENERALLY CENTER CEILING GRIDS IN EACH ROOM TO PROVIDE EQUALLY SIZED PANELS ON OPPOSITE WALLS. IF PLANS INDICATE A GRID ALIGNING WITH A COLUMN, WALL, SOFFIT, ETC. START GRID AT THE INDICATED SURFACE. AVOID PANELS LESS THAN 12" IN WIDTH.
3. SEE FINISH SCHEDULE FOR COLORS.
4. ALL WALLS EXTEND TO STRUCTURAL DECK ABOVE, UNLESS NOTED OTHERWISE. SEE CODE PLANS FOR ADDITIONAL INFORMATION.
5. SEE DETAILS X/G1 X FOR TYPICAL LATERAL BRACING OF SUSPENDED ACOUSTICAL PANELS.
6. ALL GYP BD CEILING AND SOFFITS TO BE PAINTED.
7. ALL EXPOSED STEEL FRAMING AND DECK AT CEILINGS TO BE PAINTED.
8. EXCEPT AT STORAGE, MECHANICAL AND ELECTRICAL UTILITY ROOMS PAINT ALL EXPOSED DUCTWORK, PIPING AND CONDUITS.
9. SEE DETAILS X,XX,XX,XX FOR TYPICAL SUSPENDED CEILING AND SOFFIT EDGES AND CONNECTIONS.
10. CEILING HEIGHT TO BE MEASURED FROM FINISH FLOOR LEVEL OF THE ROOM OR THE AREA WHERE CEILING IS IN. CEILING HEIGHT ABOVE RAMP TO BE MEASURED FROM BOTTOM OF LOWEST LEVEL LANDING OF RAMP.
11. ALL FIRE SPRINKLERS AT LINEAR METAL CEILING SYSTEM AND AT GYP BD CEILING CLOUDS TO BE RECESSED, TYP.

CEILING TYPES

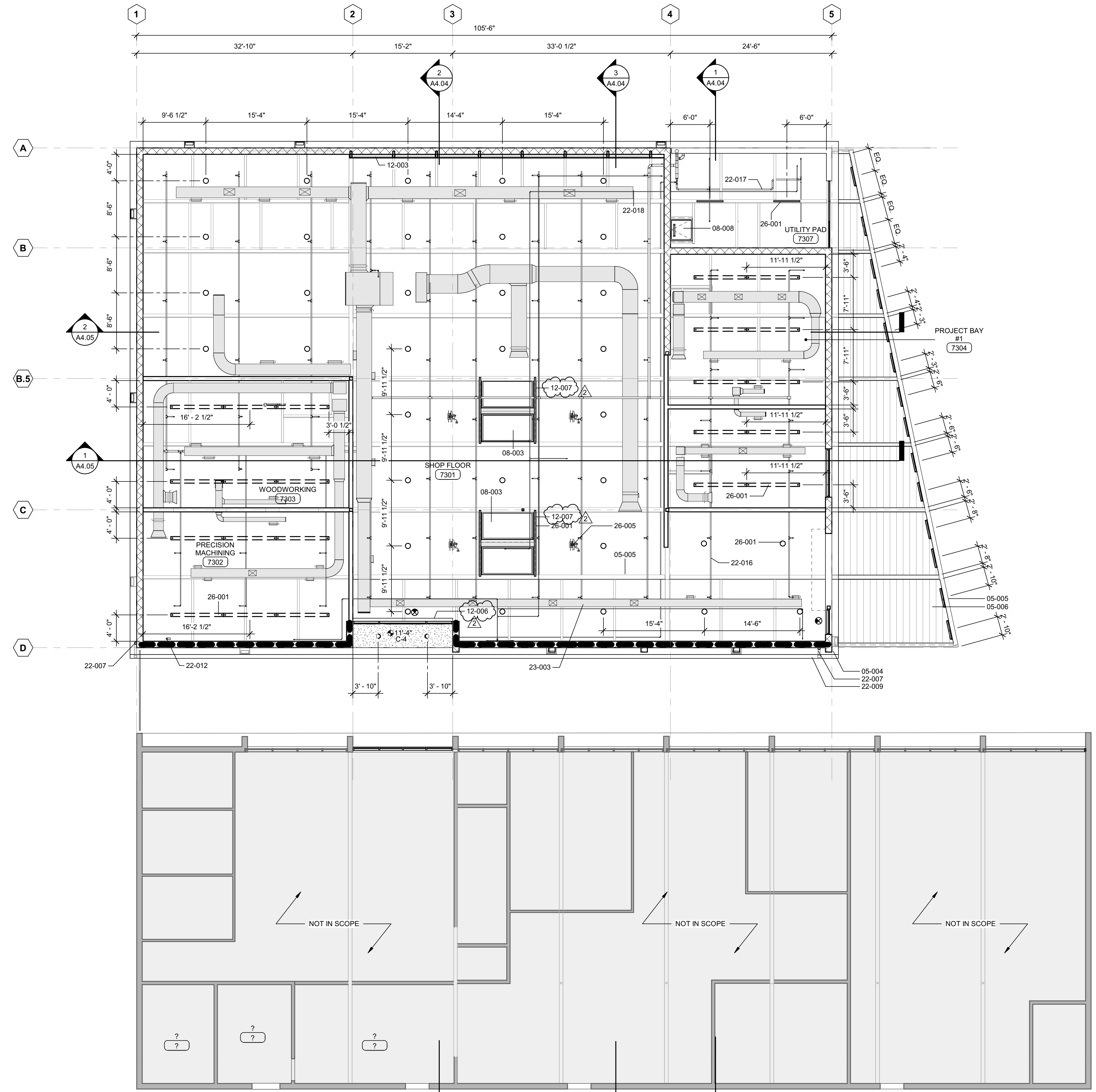
C-4 STUCCO SOFFIT

FILE NO. 19-H13  
 APPL NO. 03-120696

KEYNOTE LEGEND	
Key Value	Keynote Text
05-004	METAL DECK, PTD.
05-005	STEEL FRAMING, PTD.
05-006	WELDED CARBON STEEL BAR GRATING, PTD.
08-003	CURBED MOUNTED SKYLIGHT WITH ELECTRIC ROLLER SHADE
08-008	ROOF HATCH
12-003	MOTORIZED ROLLER SHADE WITH VISUALLY TRANSPARENT SINGLE-FABRIC SHADE/CLOTH
12-006	MANUAL ROLLER SHADE WITH VISUALLY TRANSPARENT SINGLE-FABRIC SHADE/CLOTH
12-007	MOTORIZED ROLLER SHADE WITH ROOM DARKENING SHADE/CLOTH
22-007	BROWN SPOT
22-009	GUTTER
22-012	GAS, SEE PLUMBING
22-016	PREACTION FIRE SPRINKLER
22-017	DRY FIRE SPRINKLER
22-018	COMPRESSED AIR PIPE
23-003	MECHANICAL DUCTS
26-001	LIGHT FIXTURE
26-005	RETRACTABLE POWER CORD REEL, SEE 9/S8.00

LEGEND

- FIRE-RATED WALL FULL HEIGHT TO DECK, SEE SHEET G1.03 FOR FIRE RATING REQUIREMENTS.
- METAL DECK
- STEEL BAR GRATING
- STUCCO SOFFIT
- LIGHT FIXTURES
- SUPPLY DIFFUSERS
- RETURN AIR REGISTER OR EXHAUST FAN
- EXIT LIGHT
- SMOKE DETECTOR
- HEAT DETECTOR
- INTERCOM
- PAGING SPEAKER
- INFRARED DETECTOR
- SPEAKER
- FIRE PROTECTION SPRINKLER
- VIDEO CAMERA
- DAYLIGHT SENSOR
- OCCUPANCY SENSOR
- MOTION DETECTOR
- ALARM SIREN
- FIRE ALARM HORN
- FIRE ALARM STROBE



1 REFLECTED CEILING PLAN  
 1/8" = 1'-0"

GLENDALE UNIFIED SCHOOL DISTRICT  
**CLARK MAGNET HIGH SCHOOL ENGINEERING AND TECHNOLOGY CENTER (BUILDING F)**  
 4747 NEW YORK AVE  
 GLENDALE, CA 91214



**NAC**  
 ARCHITECTURE

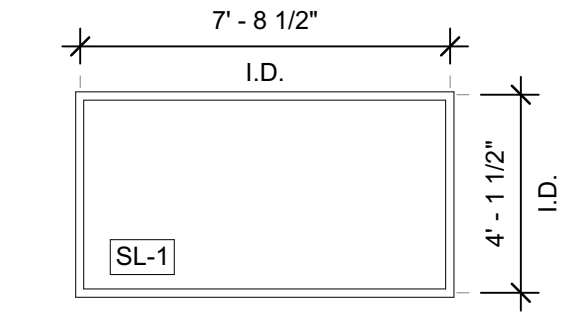
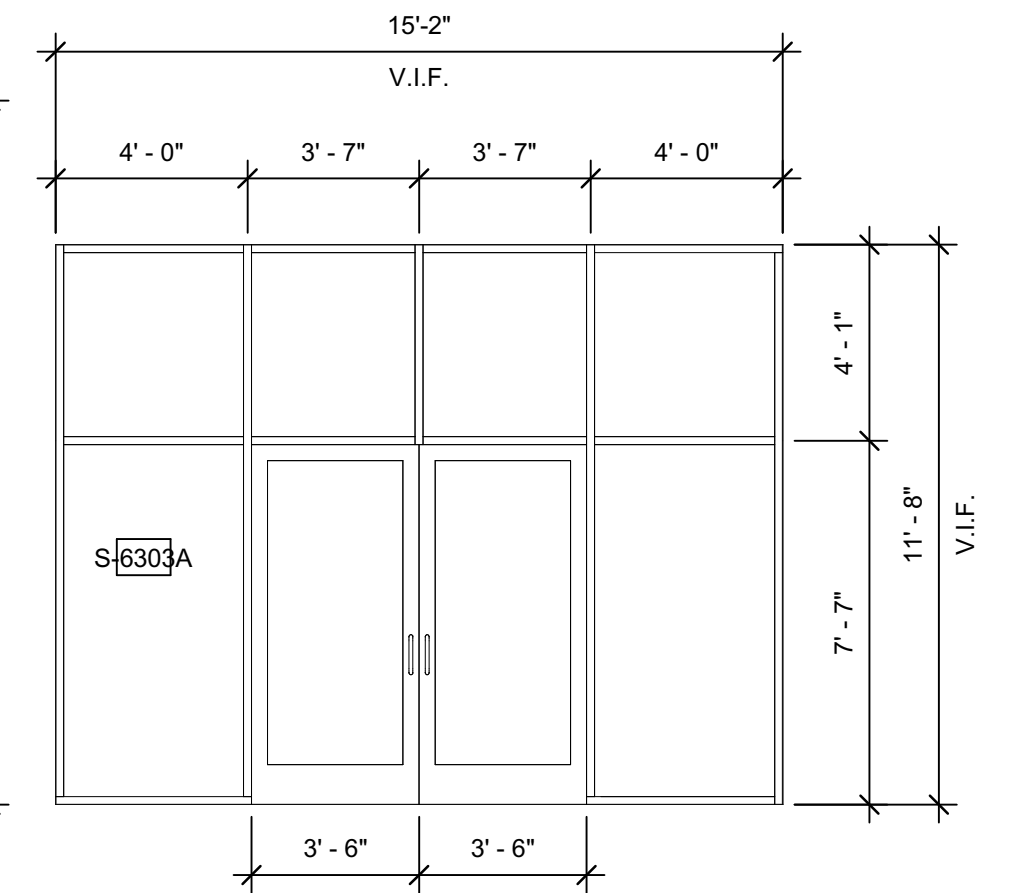
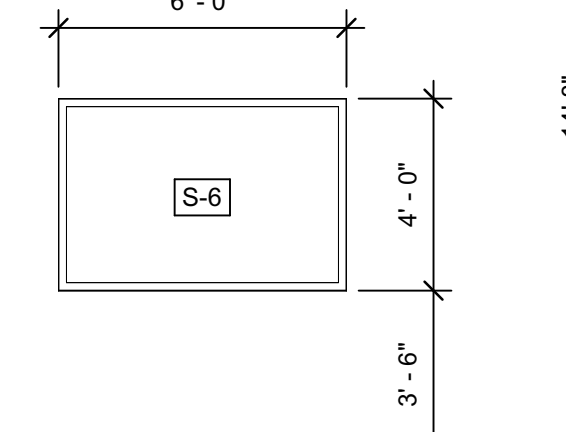
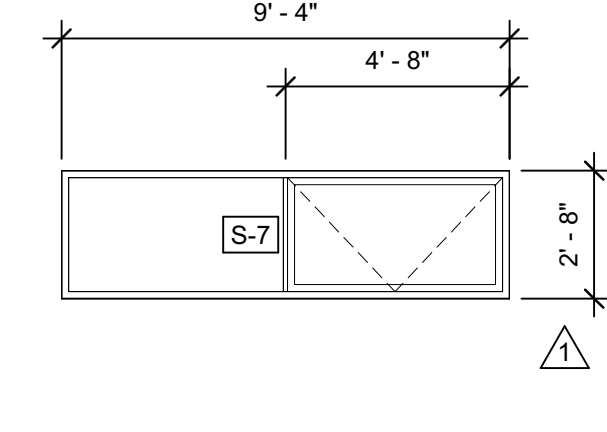
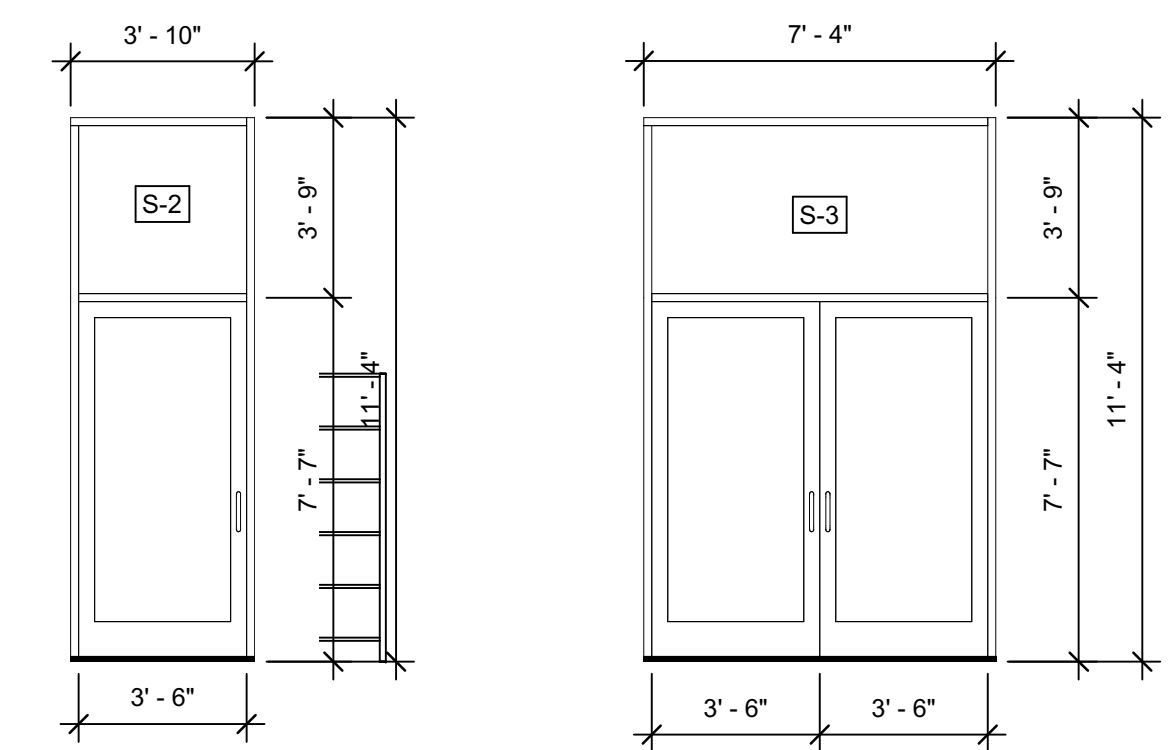
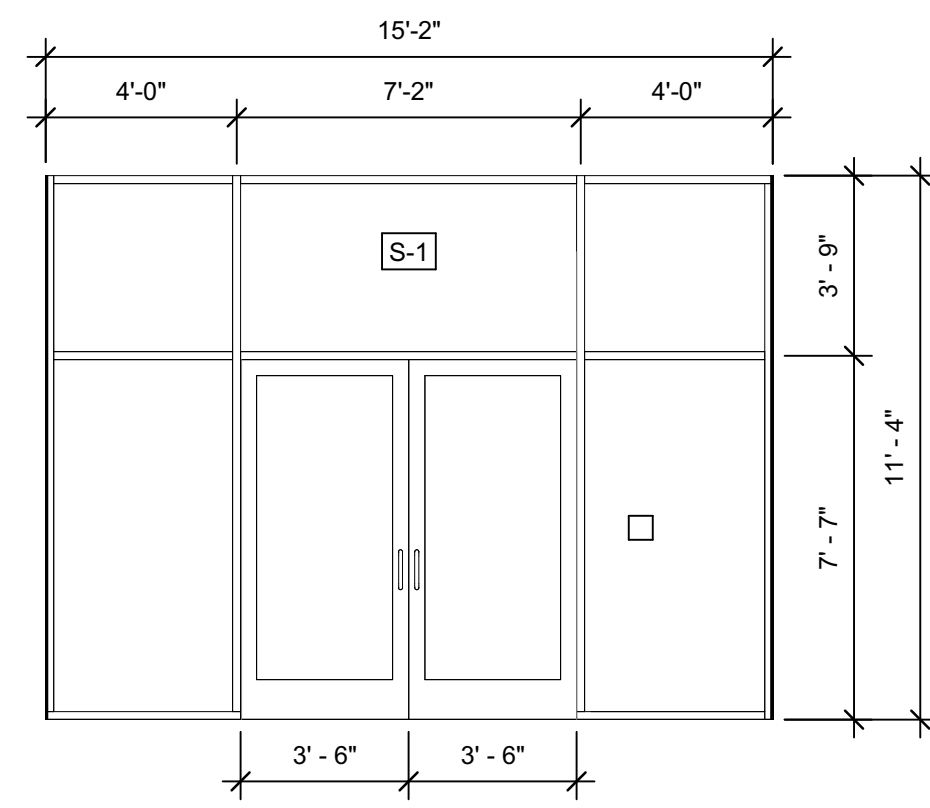
NAC NO. 161-19034  
 DATE 3/17/21

100%  
 CONSTRUCTION DOCUMENTS

REFLECTED CEILING PLAN

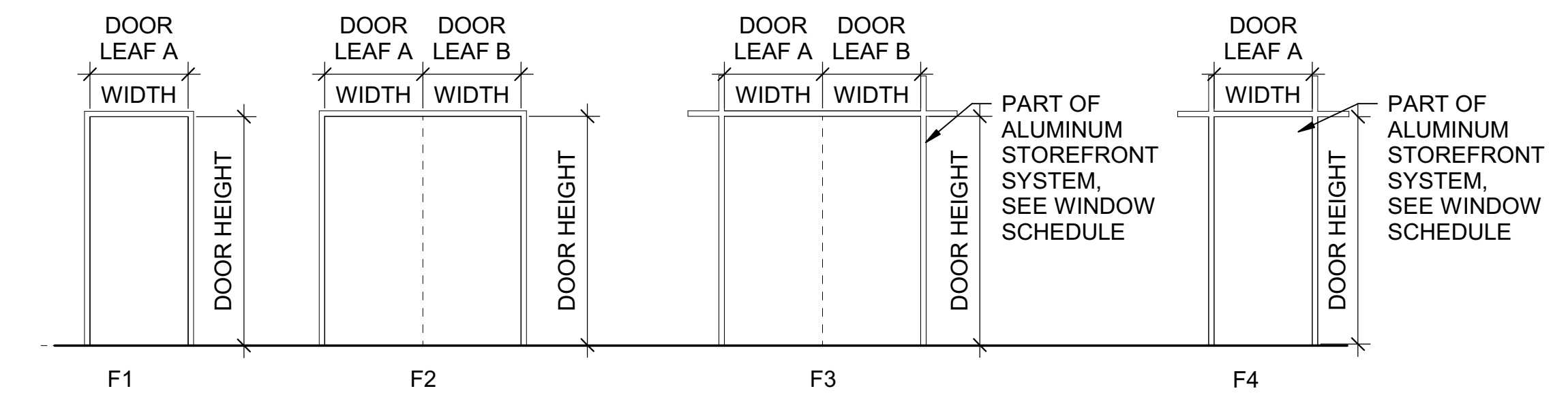
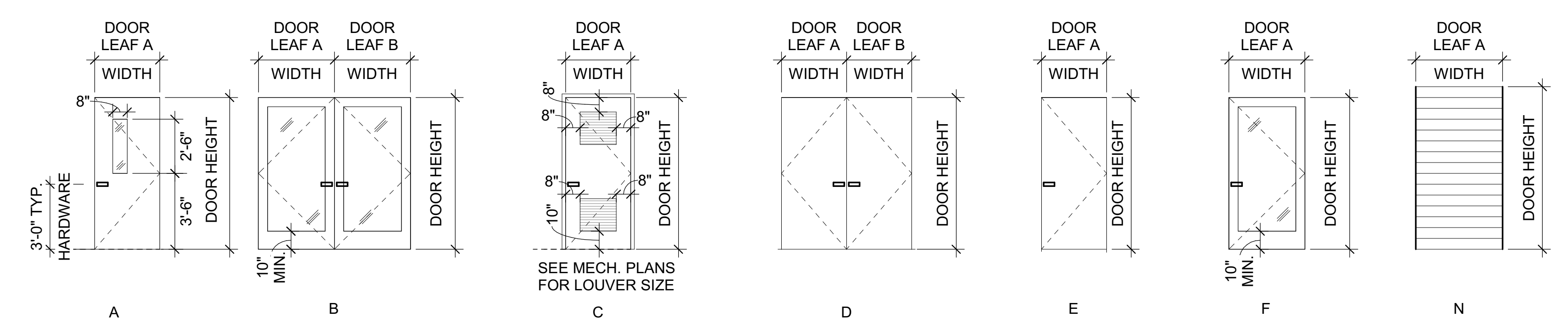
**A3.02**

- WINDOW NOTES**
1. ALL WINDOWS AND STOREFRONT SYSTEMS FACING EAST, NORTH AND SOUTH TO HAVE CLEAR LOW E INSULATING GLAZING, U-VALUE: 0.36, SHGC: 0.25, OR BETTER.
  2. WINDOW DIMENSIONS SHOWN INDICATE ROUGH OPENINGS. FIELD VERIFY ACTUAL OPENING DIMENSION.
  3. REFER TO SPECIFICATIONS FOR LOCATIONS OF LAMINATED AND TEMPERED GLASS.
  4. ALL EXTERIOR GLAZING TO BE CERTIFIED BY INDEPENDENT AGENCY FOR SOLAR HEAT GAIN COEFFICIENT AND U-VALUE.
  5. MOTORIZED ROLLER SHADE LOCATIONS INDICATED ON REFLECTED CEILING PLAN A3.02.



**SKYLIGHT**  
Scale: 1/4" = 1'-0"

**DOOR TYPES (ALL TYPES MAY NOT BE USED)**  
Scale: 1/4" = 1'-0"



**DOOR FRAMES (ALL TYPES MAY NOT BE USED)**  
Scale: 1/4" = 1'-0"

ROOM NUMBER	NAME	ROOM FINISH SCHEDULE													
		FLOOR		BASE		NORTH WALL		EAST WALL		SOUTH WALL		WEST WALL			
		MAT	FIN	FIN	CLR	MATL	FIN	CLR	MATL	FIN	CLR	MATL	FIN	CLR	
7301	SHOP FLOOR	CONC	POL	RB		GYP/CMU	PT		GYP/WC CMU	PT		CMU		GYP/CMU	PT
7302	PRECISION MACHINING	CONC	POL	RB		GYP	PT		GYP	PT		CMU		CMU	PT
7303	WOODWORKING	CONC	POL	RB		GYP	PT		GYP	PT		CMU		CMU	PT
7304	PROJECT BAY #1	CONC	POL	RB		CMU			CMU			GYP	PT	GYP/CMU	PT
7305	METAL FABRICATION	CONC	POL	RB		GYP	PT		GYP	PT		GYP	PT	GYP	PT
7307	UTILITY PAD	CONC	POL	RB		GYP	PT		GYP	PT		GYP	PT	GYP	PT

DOOR NO	PR	DOOR LEAF A	DOOR LEAF B	DOOR HT	DR THICKNESS	DOOR			FRAME			HARDWARE GROUP	DETAILS				REMARKS / CODED NOTES
						TYPE	MATERIAL	FINISH	TYPE	MATERIAL	FINISH		HEAD	HINGE JAMB	STRIKE JAMB	SILL	
6303A	PR	3'-6"	3'-6"	7'-0"	1 3/4"	B	AL	FF	F-3	AL	FF	HW-3	15/A5.20	16/A5.20	9/A5.20	14/A5.20	
7301A	PR	3'-6"	3'-6"	7'-6"	1 3/4"	B	AL	FF	F-3	AL	FF	HW-3	2/A5.02	4/A5.02	9/A5.20	6/A5.20	
7301B	PR	3'-6"	3'-6"	7'-6"	1 3/4"	F	AL	FF	F-4	AL	FF	HW-1	5/A5.21	1/A5.21	13/A5.20	6/A5.20	
7301C		11'-4"		11'-6"		N	STL	PT		SST			12/A5.20	11/A5.20	13/A5.20	10/A5.20	MOTORIZED
7302	PR	3'-6"	3'-6"	7'-0"	1 3/4"	B	HM	FF	F-2	STL	PT	HW-2	2/A5.20	1/A5.20	1/A5.20	5/A5.20	
7303	PR	3'-6"	3'-6"	7'-0"	1 3/4"	B	HM	FF	F-2	STL	PT	HW-2	2/A5.20	1/A5.20	1/A5.20	5/A5.20	
7304	PR	3'-6"	3'-6"	7'-0"	1 3/4"	B	HM	FF	F-2	STL	PT	HW-2	2/A5.20	3/A5.20	1/A5.20	5/A5.20	
7305A	PR	3'-6"	3'-6"	7'-0"	1 3/4"	B	HM	FF	F-2	STL	PT	HW-2	2/A5.20	1/A5.20	1/A5.20	5/A5.20	
7305B	PR	3'-6"	3'-6"	7'-6"	1 3/4"	B	AL	FF	F-3	AL	FF	HW-3	5/A5.21	1/A5.21	17/A5.20	6/A5.20	

- INTERIOR FINISH GENERAL NOTES**
1. ALL INTERIOR WALL AND CEILING FINISH MATERIALS FOR ROOMS AND ENCLOSED SPACES IN SPRINKLERED GROUP 'E' OCCUPANCY TO HAVE A MINIMUM CLASS C CLASSIFICATION PER TABLE 803.13

- FLOOR FINISH GENERAL NOTES**
1. ALL FLOORING MATERIAL TRANSITION AND COLOR CHANGES SHALL BE CENTERED UNDER DOOR, TYP.
  2. HATCH PATTERNS ARE ONLY USED TO DESIGNATE MULTIPLE FLOOR MATERIALS AND/OR COLORS USED WITHIN A ROOM. FOR ROOMS WITH ONLY ONE FLOORING TYPE SEE FINISH SCHEDULE.
  3. ALIGN ALL MATERIAL TRANSITIONS AND TILE JOINTS AS SHOWN WITH THE PATTERN AND IN RELATION TO ADJACENT ARCHITECTURAL ELEMENTS.
  4. ALL SUB-FLOORS AT THE FIRST FLOOR ARE TO BE CONCRETE. SEE FINISH PLAN FOR MATERIAL FINISH AND COLOR.
  5. FLOOR FINISHES AND RUBBER BASE SHALL EXTEND UNDER ALL MOVEABLE CASEWORK.

- GENERAL DOOR & RELITE NOTES**
1. ALL DOORS TO BE 1 3/4" THICK, UNLESS NOTED OTHERWISE.
  2. SEE SPECIFICATIONS FOR ALL DOOR, RELITE, SIDELITE AND TRANSOM GLAZING TYPES.
  3. LABEL COLUMN NUMBERS INDICATES THE RATING IN MINUTES, UNLESS NOTED OTHERWISE.
  4. GLAZING DIMENSIONS FOR DOOR TYPES ARE TO INSIDE OF FRAME (CLEAR GLAZING AREA). ACTUAL CUTOUT AND TOTAL FRAME WILL BE SLIGHTLY LARGER.
  5. RELITE GLAZING AND STOP TO OCCUR ON CORRIDOR SIDE OF FRAME, UNLESS NOTED OTHERWISE.
  6. ALL DOOR HANDLES TO BE LEVER TYPE COMPLYING WITH ADA.
  7. ALL RELITE GLAZING AND LITES INDOORS TO BE TEMPERED GLASS.

- DOOR & RELITE CODED NOTES**
1. DOOR OR WINDOW SEALED TO PREVENT PASSAGE OF SMOKE.
  2. TOTAL DOOR - VERIFY & FIT DOOR TO EXACT CORRIDOR WIDTH PRIOR TO DOOR FRAME FABRICATION.
  3. PADDING FULL WIDTH & HEIGHT (EXCEPT AREA OF LITE) OF ROOM ### FACE OF DOOR. SEE FINISH SCHEDULE FOR COORD WITH WALL PADDING.
  4. SCHEDULED DOOR WIDTH IS NOMINAL. EXACT DOOR WIDTH TO BE VERIFIED BASED ON ACTUAL MASONRY OPENING.
  5. POWER ASSISTED DOOR OPERATOR.
  6. PROVIDE LOUVERS IN DOOR.
  7. 4" HEAD FRAME.
  8. PROVIDE FRAME TYPE F-1 WITH NO RABBIT, AT OPENING.
  9. SINGLE RABBIT FRAME.
  10. PRE-HUNG WOOD DOOR & FRAME, NO TRIM.
  11. INSULATED ACCESS PANEL.

- ABBREVIATIONS**
- |      |                                    |
|------|------------------------------------|
| ALUM | ALUMINUM                           |
| APC  | ACOUSTICAL PANEL CEILING           |
| AWP  | ACOUSTICAL WALL PANEL              |
| CLR  | COLOR                              |
| CONC | CONCRETE                           |
| CPT  | CARPET                             |
| CT   | CERAMIC TILE                       |
| EM   | ENTRY MAT                          |
| EP   | EPOXY PAINT                        |
| EXP  | EXPOSED                            |
| FF   | FACTORY FINISHED                   |
| FIN  | FINISH                             |
| GLZ  | GLAZING                            |
| GYP  | GYP/PLUM BOARD                     |
| LN   | LINOLEUM                           |
| MATL | MATERIAL                           |
| MCSF | MINERAL COMPOSITE SCULPTURAL PANEL |
| MTC  | MORTAR TREATMENT COATING           |
| POL  | POLISHED CONCRETE                  |
| PT   | PAINT                              |
| RAF  | RESILIENT ATHLETIC FLOORING        |
| RB   | RUBBER BASE                        |
| RFT  | RESILIENT FLOORING TILE            |
| RSS  | RUBBER STAIR STRINGER              |
| SLR  | SEALER                             |
| SWC  | SANITARY WALL COVERING             |
| SV   | SHEET VINYL                        |
| UNO  | UNLESS NOTED OTHERWISE             |
| VCT  | VINYL COMPOSITION TILE             |
| VRB  | VENTILATING RUBBER BASE            |
| VWC  | VINYL WALL COVERING                |
| WP   | WALL PADS                          |

- REVISIONS**
1. ADDENDUM #1 2/12/21
  2. ADDENDUM #2 3/17/21

FILE NO. 19-H13  
APPL NO. 03-120696

GLENDALE UNIFIED SCHOOL DISTRICT  
**CLARK MAGNET HIGH SCHOOL ENGINEERING AND TECHNOLOGY CENTER (BUILDING F)**  
 4747 NEW YORK AVE  
 GLENDALE, CA 91214



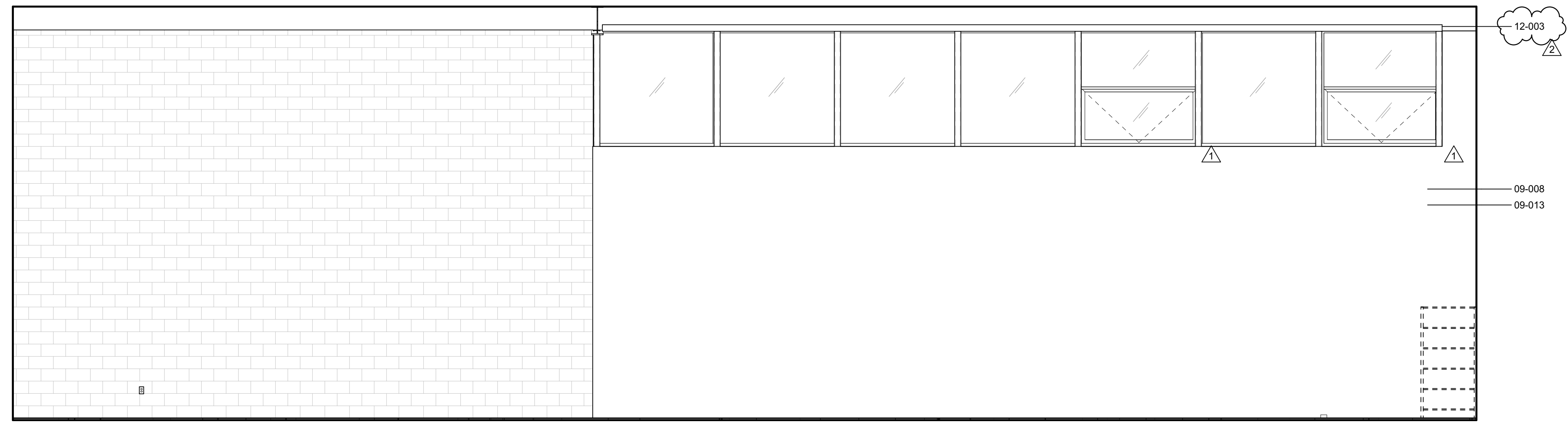
NAC NO. 161-19034  
DATE 3/17/21

100%  
CONSTRUCTION DOCUMENTS

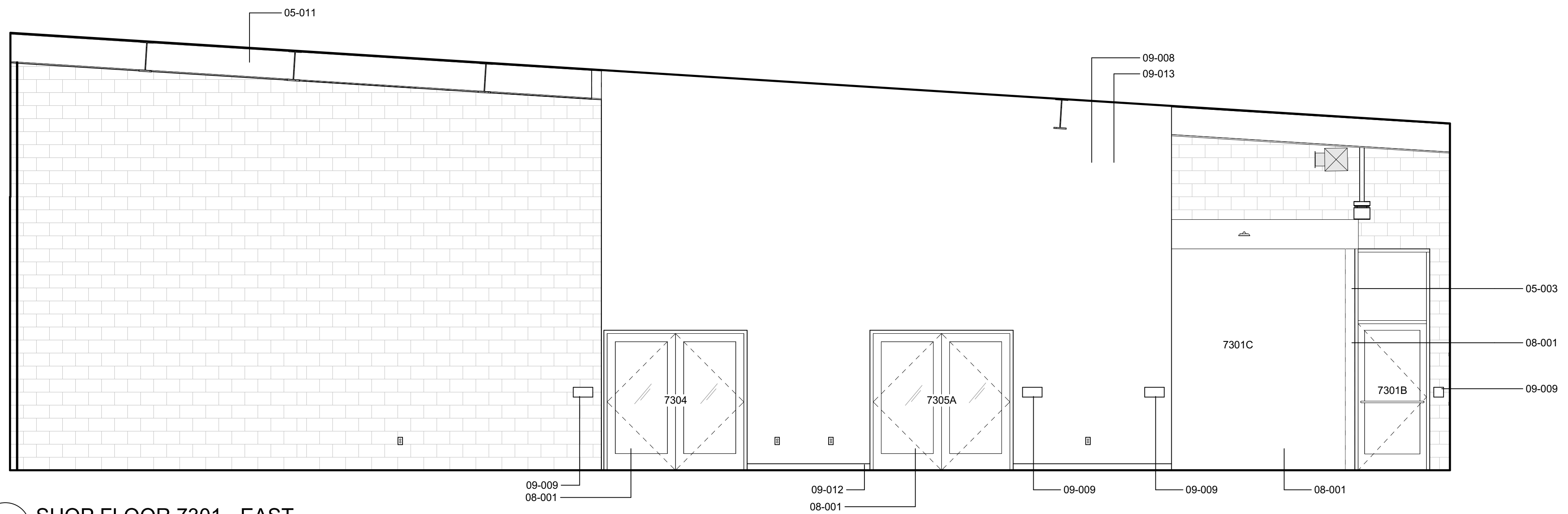
DOOR & FINISH SCHEDULES

**A3.10**

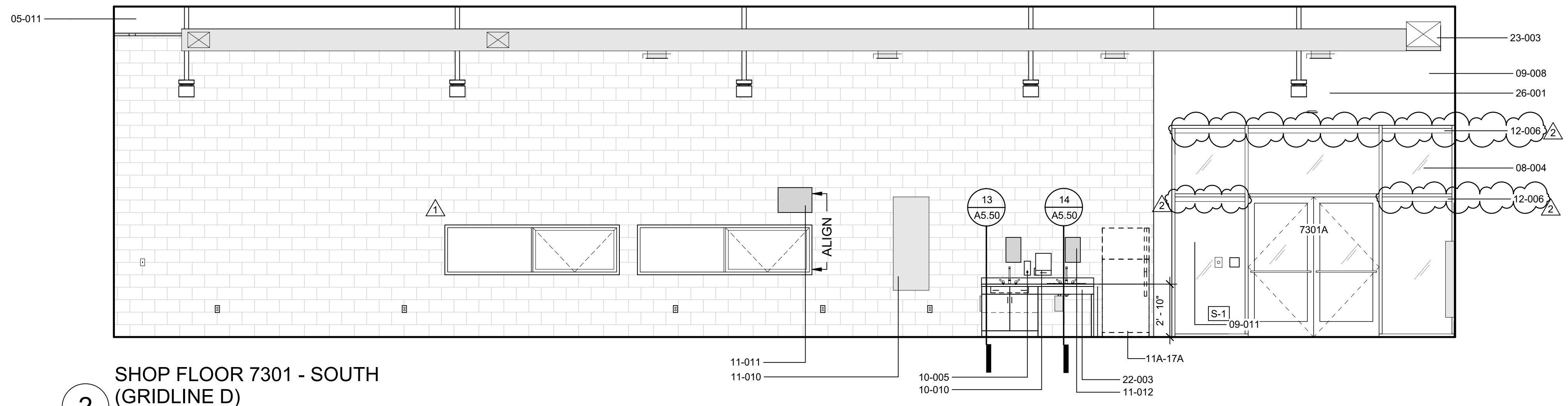
KEYNOTE LEGEND	
Key Value	Keynote Text
05-003	HSS, SEE STRUCTURAL
05-011	STRUCTURAL STEEL
08-001	DOOR, FRAME & HARDWARE PER DOOR SCHEDULE
08-004	ALUMINUM STOREFRONT
09-008	PAINT
09-009	ROOM IDENTIFICATION SIGNAGE
09-010	FIRE ALARM CONTROL PANEL SIGNAGE
09-011	EXIT SIGN
09-012	WALL BASE
09-013	VINYL GRAPHIC, DESIGN TO BE PROVIDED BY ARCHITECT
10-005	SOAP DISPENSER, GFCI
10-009	FIRE EXTINGUISHER WITH CABINET COMPARTMENT
10-010	PAPER TOWEL DISPENSER
10-012	PROVIDE BACKING TO ACCOMMODATE MONITOR MOUNT (BMS FPM-DDA-600 OR SIM.)
11-008	FIRE ALARM CONTROL PANEL
11-009	FIRE ALARM PULL
11-010	PULL BOX FOR SECURITY CABLING
11-011	FIRE ALARM SPEAKER
11-012	DISCONNECT SWITCH
12-003	MOTORIZED ROLLER SHADE WITH VISUALLY TRANSPARENT SINGLE-FABRIC SHADECLOTH
12-006	MANUAL ROLLER SHADE WITH VISUALLY TRANSPARENT SINGLE-FABRIC SHADECLOTH
23-003	MECHANICAL DUCTS
23-006	EXHAUST FAN
26-001	LIGHT FIXTURE
26-012	POWER AND DATA PORT



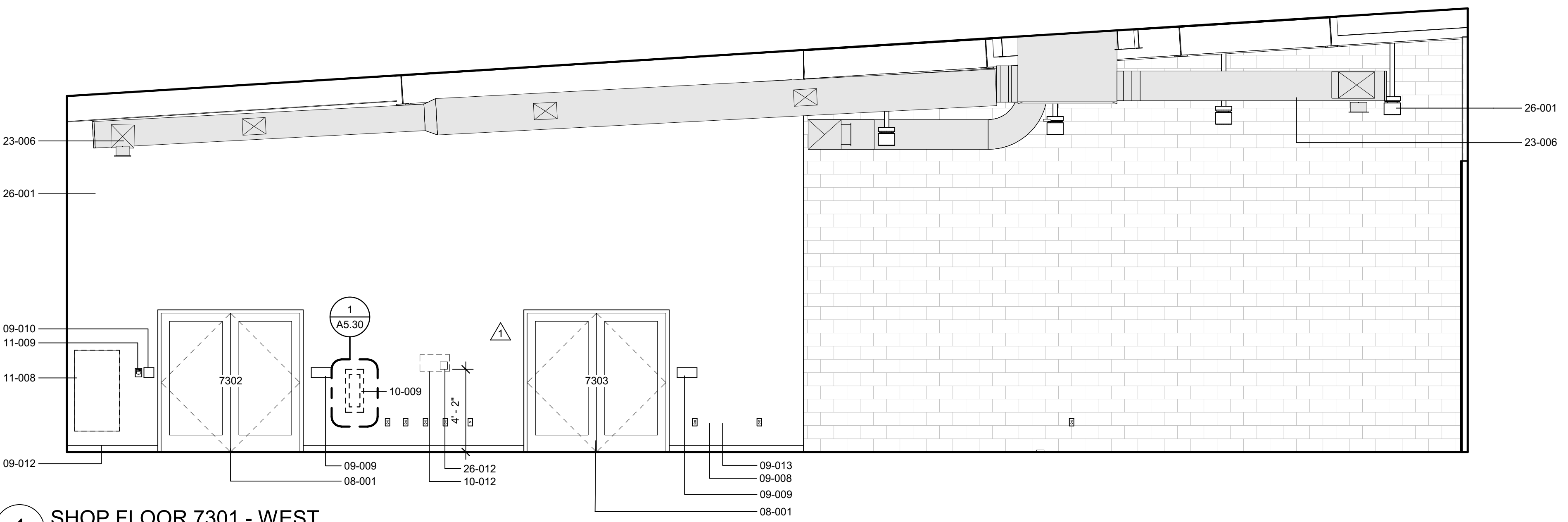
4 SHOP FLOOR 7301 - NORTH  
(GRIDLINE A)  
Scale: 1/4" = 1'-0"



3 SHOP FLOOR 7301 - EAST  
Scale: 1/4" = 1'-0"



2 SHOP FLOOR 7301 - SOUTH  
(GRIDLINE D)  
Scale: 1/4" = 1'-0"



1 SHOP FLOOR 7301 - WEST  
Scale: 1/4" = 1'-0"

REVISIONS

- 1. ADDENDUM #1 2/12/21
- 2. ADDENDUM #2 3/17/21

FILE NO. 19-H13  
APPL NO. 03-120696

GLENDALE UNIFIED SCHOOL DISTRICT  
**CLARK MAGNET HIGH SCHOOL ENGINEERING AND TECHNOLOGY CENTER (BUILDING F)**  
4747 NEW YORK AVE  
GLENDALE, CA 91214



**NAC**  
ARCHITECTURE

NAC NO. 161-19034  
DATE 3/17/21

100%  
CONSTRUCTION  
DOCUMENTS

INTERIOR ELEVATIONS

**A7.02**