



Addendum No. 1

November 9, 2017

Site Improvements at Franklin Elementary School

Bid Number 159-17/18

This addendum supercedes, supplements and has precedence over all portions of the bidding documents with which it differs. Acknowledge receipt of this Addendum in the space provided on the Bid Form. Failure to do so may subject the Bidder to disqualification.

Changes to the Bid Specifications:

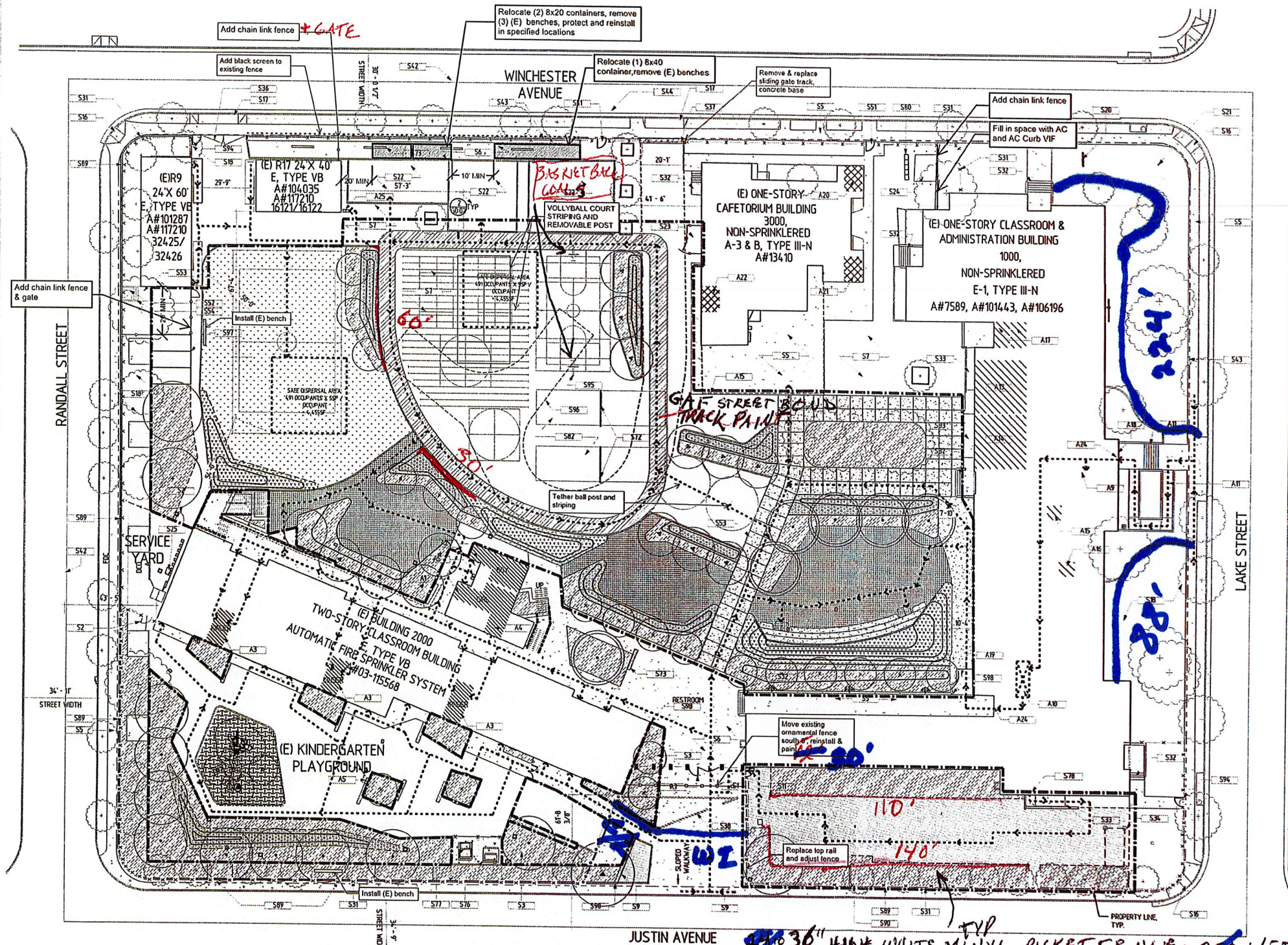
- Add approximately 320 linear feet of Picket Fence, per the revised detail to bring the total to approximately 670 linear feet.
- Add approximately 10' of Chain Link Fence, per revised detail
- Add 8 hours of Labor to for 24 3" Eye Hook Lag Bolts

Answers to Questions

Question: The vinyl picket fence have posts that need to go into the dirt for approximately 30". Do we have to provide concrete for this footings?

Answer: Yes, Contractor to provide 12" x 2' concrete footing.

End of Addendum No. 1.



KEY LEGEND

KEY	TEXT
A1	(E) ACCESSIBLE GIRL'S RESTROOM - A#11558
A2	(E) ACCESSIBLE BOY'S RESTROOM - A#11558
A3	(E) ACCESSIBLE RESTROOM - A#11558
A4	(E) ACCESSIBLE STAFF UNSEX RESTROOM - A#11558
A5	(E) ACCESSIBLE H-LD DRINKING FOUNTAIN - A#11558
A7	(E) ACCESSIBLE STEEL PEDESTRIAN GATE - A#11558
A9	(E) ACCESSIBLE ADMINISTRATION LOBBY VISITOR CHECK-IN - A#106196
A10	(E) ACCESSIBLE WHEELCHAIR LIFT - A#106196
A11	(E) ACCESSIBLE RAMP AND STAIRS - A#106196
A12	(E) ACCESSIBLE H-LD DRINKING FOUNTAIN - A#106196
A13	(E) ACCESSIBLE GIRL'S RESTROOM - A#106196
A14	(E) ACCESSIBLE BOY'S RESTROOM - A#106196
A15	(E) ACCESSIBLE UNSEX RESTROOM - A#106196
A16	(E) ACCESSIBLE STAFF UNSEX RESTROOM - A#106196
A17	(E) ACCESSIBLE STAFF UNSEX RESTROOM - A#106196
A18	(E) ISA SIGN ON DOOR
A19	(E) 5% SLOPED WALK
A20	(E) NON-ACCESSIBLE WOMEN'S RESTROOM
A21	(E) NON-ACCESSIBLE MEN'S RESTROOM
A22	(E) NON-ACCESSIBLE STAFF UNSEX RESTROOM
A24	(E) ACCESSIBLE ENTRY DOORS - A#106196
A25	(E) ACCESSIBLE DRINKING FOUNTAIN - A#103-117210
S1	(E) 6'-0" H STL FENCING, PAIR OF 6'-0" W GATES AND SINGLE 3'-0" W PEDESTRIAN GATE W/ WELDED WIRE MESH PANELS - A#11558
S2	(E) 6'-0" CHAIN LINK FENCE W/ 4'-0" W PEDESTRIAN GATE (E)
S3	(E) PLANTING AREA W/ 1' CUT BARK WOOD MULCH (OAK, PINE, OR REDWOOD) - A#11558
S5	(E) CONCRETE PAVING
S6	(E) CONCRETE PAVING
S7	(E) ASPHALT PAVING
S9	(E) RETAINING WALL & CONCRETE BENCH
S11	(E) 6'-0" H CHAIN LINK FENCE W/ 3'-0" W PEDESTRIAN GATE - A#11558
S14	(E) STEEL PLANTER HEADER
S15	(E) LUNCH SHELTER - A#104-10
S16	(E) CURB RAMP
S17	(E) CURB CUT
S18	(E) PLANTING AREA
S20	(E) MARQUEE
S21	(E) FLAGPOLE
S22	(E) RUBBER SURFACING
S23	(E) TRASH ENCLOSURE
S24	(E) ELECTRICAL EQUIPMENT
S25	(E) PV INVERTER ON CONCRETE PAD
S31	(E) CHAIN LINK FENCE
S32	(E) CONCRETE STAIRS
S33	(E) CONCRETE RAMP - A#106196
S34	(E) SHADE STRUCTURE
S36	(E) 20'-0" SWING GATE PROTECT IN PLACE
S37	(E) 10'-0" WIDE SLIDING GATE
S38	(E) STEEL ENTRY GATEWAY
S42	(E) STREET ENTRYLINE
S43	(E) PROPERTY LINE - TYP.
S44	(E) IMAGINARY PROPERTY LINE
S51	(E) 3'-0" HAN GATE
S52	(E) FIRE DEPARTMENT HAN GATE
S53	(E) CONCRETE PAVING
S54	(E) SITE STAIR
S72	(E) WOOD HANDBALL WALL
S73	(E) BENCH
S76	(E) ELECTRIC BOX - A#11558
S77	(E) TRANSFORMER - A#11558
S78	(E) LIMIT OF WORK
S80	(E) BIKE RACKS
S82	(E) STRIPES
S89	(E) RETAINING WALL
S90	(E) END OF (E) RETAINING WALL
S94	(E) 3'-0" CLF PEDESTRIAN GATE
S95	(E) BASKET BALL GOAL SEE 1/6002
S96	(E) FIRE LANE PER SEE REFERENCE
S97	(E) STORAGE CONTAINER, TYP. PLACED BY DISTRICT
S98	(E) ACCESSIBLE DIRECTIONAL SIGNAGE, SEE 3/6002
S99	(E) ALS SIGNAGE, ALS SYSTEM PROVIDED 03-11558 DEVICE AVAILABLE IN ADMIN OFFICE

ADD 320 1/2 FT PICKET FENCE
ADD 10' C/L FENCE
ADD 8 HRS LABOR + 24 3" EYE HOOK LAG BOLTS

1 CODE ANALYSIS & ACCESSIBILITY SITE PLAN
 SCALE: 1" = 20'-0"

LEGEND

(T) TREE	(E) TREE	(E) DECOMPOSED GRANITE	(E) ASPHALT PAVING	(E) CONCRETE PAVING	(E) LANDSCAPE AREA 2	(E) BRICK PAVING	(E) RUBBERIZED TILE SURFACING	(E) GRASS	(E) LANDSCAPE AREA 1	(E) ACCESSIBLE RESTROOMS	(E) ACCESSIBLE RESTROOMS	(E) NON-ACCESSIBLE RESTROOMS	(E) ELEVATOR OR WHEELCHAIR LIFT	(E) PERMEABLE PAVERS	(E) LIMIT OF WORK	(E) PROPERTY LINE	(E) ACCESSIBLE PATH OF TRAVEL	(E) LINE OF FLOOR/ROOF ABOVE	
(E) 6'-0" H CHAIN LINK FENCE	(E) 6'-0" H ORNAMENTAL FENCE	(E) LIGHT POLE	(E) 30 X 48 WHEELCHAIR ACCESSIBLE SPACE	(E) 6'-0" H CHAIN LINK FENCE	(E) 6'-0" H ORNAMENTAL FENCE	(E) LIGHT POLE	(E) 30 X 48 WHEELCHAIR ACCESSIBLE SPACE	(E) 6'-0" H CHAIN LINK FENCE	(E) 6'-0" H ORNAMENTAL FENCE	(E) LIGHT POLE	(E) 30 X 48 WHEELCHAIR ACCESSIBLE SPACE	(E) 6'-0" H CHAIN LINK FENCE	(E) 6'-0" H ORNAMENTAL FENCE	(E) LIGHT POLE	(E) 30 X 48 WHEELCHAIR ACCESSIBLE SPACE	(E) 6'-0" H CHAIN LINK FENCE	(E) 6'-0" H ORNAMENTAL FENCE	(E) LIGHT POLE	(E) 30 X 48 WHEELCHAIR ACCESSIBLE SPACE

PROJECT STATUS

DATE	DESCRIPTION
04/05/1931	CERTIFIED 04/05/1931
03/05/1928	CERTIFIED 03/05/1928
10/16/2001	LETTER TYPE 1 10/16/2001
07/25/2003	LETTER TYPE 2 07/25/2003
10/21/2001	LETTER TYPE 1 10/21/2001
10/31/2005	LETTER TYPE 1 10/31/2005
09/21/2016	LETTER TYPE 1 09/21/2016
UNDER CONSTRUCTION	

GENERAL NOTES:

- Site walkways shall provide a barrier free path of travel for a person in a wheelchair. The path of travel shall be a hard, durable and slip resistant route a minimum of 48 inches in width (118-403.5) Exception 3) and with a maximum gradient slope of 5% and maximum cross-slope of 2% (118-403.3) abrupt changes in level shall not exceed a beveled slope of 12 with a 1/2" vertical height and 1/4" maximum in vertical differential levels. Concrete finish shall be medium salted.
- Path of travel (P.O.T.) as indicated, is a common barrier free egress/access route without any abrupt vertical changes exceeding 1/2" beveled at 12 maximum slope, except that level changes do not exceed 1/4" vertical and is at least 48" wide. The path surface is slip resistant, stable, firm, and smooth. Passing spaces (118-403.5) at least 60" x 60" are located not more than 200' apart. Parts of P.O.T. with continuous gradients have 60' level areas (118-403.3) not more than 400' apart. The cross-slope does not exceed 2% and slope in the direction of travel and is less than 5% unless otherwise indicated. P.O.T. shall be maintained free of overhanging obstructions to 80" minimum (118-307.4) and protruding objects greater than 4" projection from wall and above 27" and less than 80" (118-307.2). Architect shall verify that there are no barriers in the P.O.T.
- Gates in Path of travel shall have emergency hardware and kick plates.
- For all site gradients see CIVIL PLANS.
- Contractor to adjust door operation pressure to be 5 lb. MAX at all doors along the path of travel.

FLOOD ZONE

BASED ON FLOOD INSURANCE RATE MAP DATED SEP 16 2008
 FLOOD ZONE: X
 BASE FLOOD ELEVATION: N/A

PATH OF TRAVEL STATEMENT

The POT identified in these construction documents is compliant with the current applicable California Building Code accessibility provisions for path of travel requirements for alterations, additions and structural repairs. As part of the design of this project, the POT that were determined to be noncompliant have been identified and the corrective work necessary to bring them into compliance has been included within the scope of this project's work through details, drawings and specifications incorporated into these construction documents. Any noncompliant elements, components or portions of the POT that will not be corrected by this project based on valuation threshold limitations or a finding of unreasonable hardship are so indicated in these construction documents.

During construction, if POT items within the scope of the project represented as code compliant are found to be nonconforming beyond reasonable construction tolerances, they shall be brought to compliance with the CBC as a part of this project by means of a construction change document.

REVISIONS

CONSTRUCTION DOCUMENTS



CERTIFICATION STAMP
 DIVISION OF STATE ARCHITECTURE
 OFFICE OF REGULATION SERVICES
 FILE NO. 14-000000
 APR. 16. 2017
 JUN 15 2017

UNIFIED SCHOOL DISTRICT
FRANKLIN E.S. URBAN GREENING GRANT
 1010 LAKE STREET, GLENDALE CA 91201
 837 N SPRING STREET | LOS ANGELES CA 90012-2325 | P: 323-475-8075 | F: 323-475-8074



NAC
 ARCHITECTURE
 nacarchitecture.com
 837 N SPRING STREET | THIRD FLOOR
 LOS ANGELES CA 90012
 PO BOX 818789

161-14031
 Author
 5-30-2017
 Checker

G1.01