

Date: May 24, 2019

DSA Appl. No. 03-118726  
DSA File No. 19-H13

**ADDENDUM NO. 3**

To Project Bidding Documents for:

**GLENDALE HIGH SCHOOL  
AQUATICS CENTER  
GLENDALE UNIFIED SCHOOL DISTRICT**

**tBP/ARCHITECTURE**  
4611 Teller Avenue  
Newport Beach, CA 92660  
949/673-0300

TO: PROSPECTIVE BIDDERS

This Addendum forms a part of the Contract Documents and modifies the original Bidding Drawings and Specifications dated March 20, 2019. Acknowledge receipt of this Addendum in space provided on the Bid Form. Failure to acknowledge may subject Bidder to disqualification.

**ATTACHMENTS**

The following attachments are a part of Addendum No. 3:

- 1. Pre-Bid RFI Responses (Total 8)**  
PB-RFI-008



---

Hung L. Cheng, **tBP/Architecture**

Date: May 24, 2019

**GLENDALE HIGH SCHOOL  
AQUATICS CENTER  
GLENDALE UNIFIED SCHOOL DISTRICT**

tBP Proj. No. 20916.00

tBP/ARCHITECTURE  
4611 Teller Avenue  
Newport Beach, CA 92660  
949-673-0300

TO: PROSPECTIVE BIDDERS

**RESPONSES TO PRE-BID RFI'S**

PB RFI-008

Reference Sheet SPS-2

Sheet SPS-2 indicates the pool floor slab elevation at the main drains to be -12'-6". The floor slab elevation at the deep end corner and edges of the lowest section of pool floor slab is indicated at -13'-0". This creates a condition where the floor slopes away from the drains. Please clarify the proper elevations for the pool floor at the deep end.

**Response** – Revised elevations in Addendum 2 **Revision to SPS-2.**

Reference Sheet SPS-2

Sheet SPS-2, Note 1, indicates the pool floor slab to be 5" thick with #4 rebar @18" OC each way at 2" below top of slab. Sheet SPS-1, Reinforced Concrete Note 4, indicates 3" of concrete cover for concrete formed against earth. As specified, the 5" thick concrete floor slab will not accommodate the rebar and the required clearances. Please clarify the requirements for the pool floor slab.

**Response** – Revised Note 1 in Addendum 2 **Revision to SPS-2.**

Reference Sheet SP1-1

Sheet SP1-1 indicates doweled expansion joints in the concrete deck at each corner of the pool. These appear to be the only expansion joints indicated for the pool deck area. Is this correct?

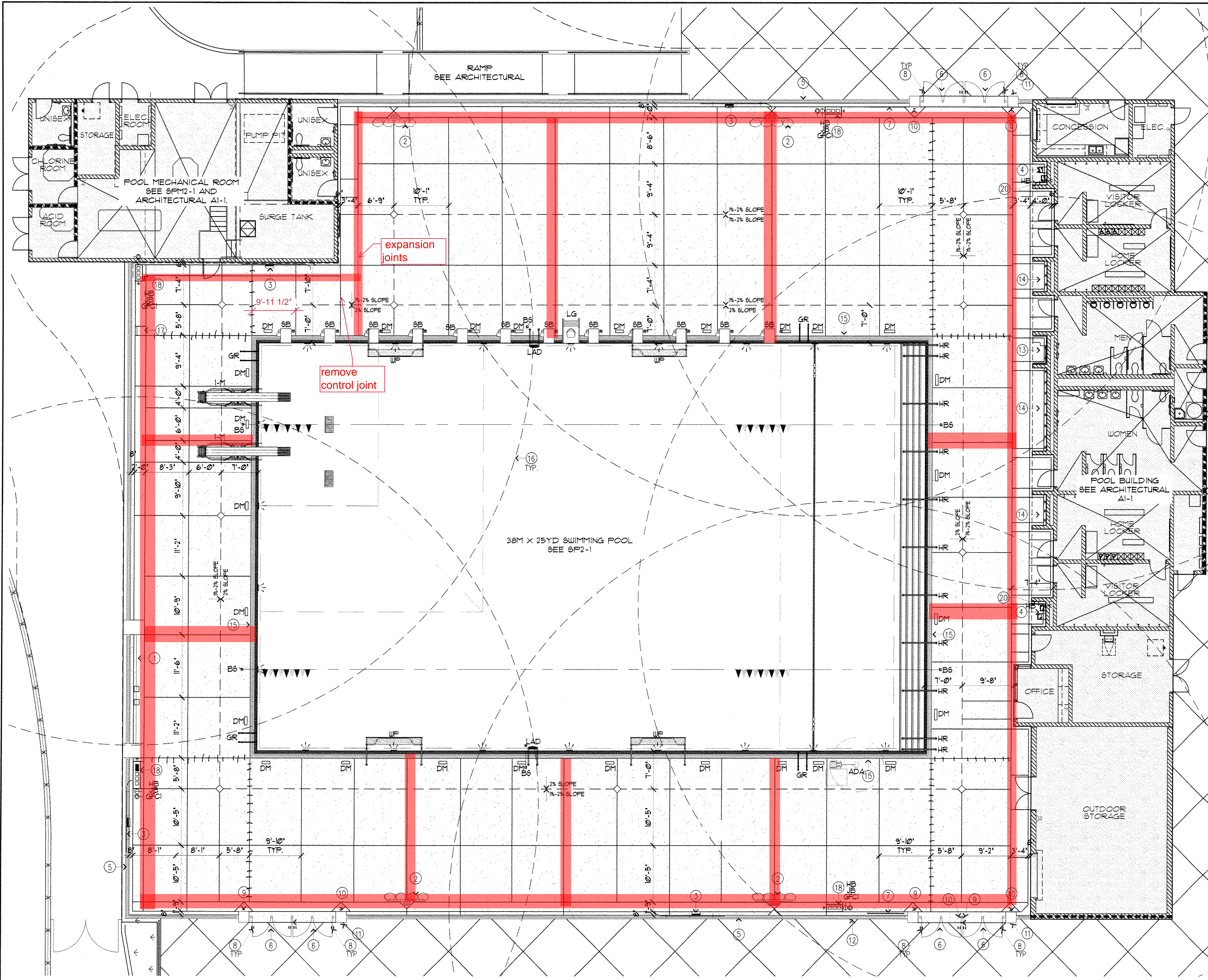
**Response** – See attached plan showing location of expansion joints. Doweled expansion joints and control joints to remain unchanged.

Reference Sheet SP4-1

Note 9, Sheet SP4-1 indicates "Concrete deck...w/ Xypex". Spec Section 033110 does not include a reference to the Xypex admixture as part of the mix design for the pool deck concrete. Please clarify if Xypex is required for this application. If so, please specify the quantity required in the mix (lbs. of Xypex per CY of concrete).

**Response** – Ignore reference to Xypex on SP4-1. Build per specifications.





**KEY NOTES**

1. SCOREBOARD, SEE SP3-12 AND ARCHITECTURAL 12/209. SEE ARCHITECTURAL A0-1 FOR LOCATION.
2. SPORTS LIGHTS, SEE E6-1
3. LIFE HOOK, LIFE RING & ROPE
4. ACCESSIBLE DRINKING FOUNTAIN, SEE ARCHITECTURAL 13/6/01
5. ENCLOSURE, SEE ARCHITECTURAL A0-1
6. SELF CLOSING & SELF LATCHING GATES W/ PANIC HARDWARE, SEE ARCHITECTURAL 15/2/05
7. POOL SIGNS, SEE 5-A/SP3-4
8. KEEP GATE CLOSED SIGN, SEE 5-B/SP3-4
9. EXIT W/ BRAILLE SIGN, SEE 5-B/SP3-4
10. EXIT ILLUMINATION SIGN, SEE 5-B/SP3-4
11. ACCESSIBLE SIGN, SEE 5-C/SP3-4
12. ADA POOL LIFT SIGN, SEE 5-C/SP3-4
13. ADA SHOWERS, SEE ARCHITECTURAL 11/6/01
14. SHOWERS, SEE ARCHITECTURAL 11/6/01
15. EXPANSION JOINT BETWEEN MYRTHA PANEL SYSTEM AND CONCRETE DECK. SEE 6/SP3-5
16. 15 FT. REACH RADIUS AROUND EACH HOSE BIB LOCATION.
17. SOUNDING WELL & ACCESS PANEL, SEE 1/SP3-5
18. TOMBSTONE, SEE 1/SP3-10. SEE CIVIL SHEET C111 FOR HOSE BIB P.O.C.
19. NOT USED.
20. HOSE BIB AT POOL BUILDING, SEE ARCHITECTURAL A1-1.

**LEGEND**

- = 5" CONCRETE POOL DECK, W/ 4" @ 12" O.C.E.W. TYP. SEE 5/SP3-5
- = SLOT DRAIN, SEE 4/SP3-5
- = CONTROL JOINT, SEE 5/SP3-5
- = EXPANSION JOINT, SEE 5/SP3-5
- = DOUBLED EXPANSION JOINT, SEE 5/SP3-5

**GENERAL NOTES**

- A. EXTERIOR SLAB TO HAVE 2% MAX CROSS SLOPE.
- B. CONCRETE DECK TO HAVE MEDIUM BROOM FINISH. TEXTURE TO BE PERPENDICULAR TO EDGE OF POOL.
- C. CONCRETE DECK TO SLOPE 2% MAX. AWAY FROM POOL TO STORM TYP.
- G. SEALANT AT ALL EXPANSION JOINTS FOR CONCRETE DECK & POOL.
- E. ANCHORS & DEPTH MARKER W/ DECK JOINTS TO HAVE 6" MIN. SEPARATION.
- F. ALL CLIMBABLE OBJECTS SUCH AS TREES, PLANTER BOXES, HOSE BIBS, GAS METERS, ELECTRICAL BOXES & WATER PIPES ARE 5'-0" CLEAR OF FENCES ON OUTSIDE OF FENCE.
- G. ALL ANCHORS & STRUCTURAL STEEL IN POOL DECK TO BE BONDED & GROUNDED WITHIN 5' OF POOL. SEE 149/SP3-10
- H. 588.25 POOL WATER LEVEL USED AS ELEVATION REFERENCE.
- I. POOL BUILDING BY 'tBP' ARCHITECTS MUST DRAIN TO SANITARY SEWER & NOT TO POOL SLOT DRAIN/ STORM SEWER. SEE ARCHITECTURAL.
- J. FOR POOL TIMING SYSTEM SEE SPT-1.

**EXITING**  
PER CBC 1004.5, 1005.11, 1005.2.2 & 1002.2.2

<b>DECK:</b>	
TOTAL DECK AREA	= 14,586 SQ. FT.
DECK OCCUPANCY (1/15)	= 912
<b>POOL:</b>	
TOTAL POOL AREA	= 9,367 SQ. FT.
POOL OCCUPANCY (1/50)	= 181

TOTAL OCCUPANCY	= 1,415
TABLE 1005.1 (02)	= 283'
NET WIDTH REQ'D	= 23'-5"
NET WIDTH PROVIDED	= 42'-0"

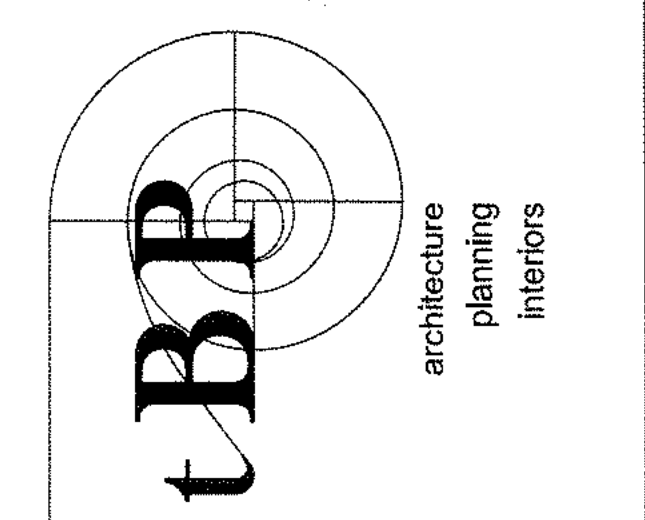
(6) 7'-0" GATE W/ 3'-6" LEAVES

**POOL DECK PLAN**  
1/8" = 1'-0"  
NORTH

NOTE:  
SEE CIVIL SHEET C111 FOR DECK ELEVATIONS  
SEE CIVIL SHEET C111 FOR SLOT DRAIN POINT OF CONNECTION TO STORM DRAIN.

**EQUIPMENT LIST & SYMBOLS**

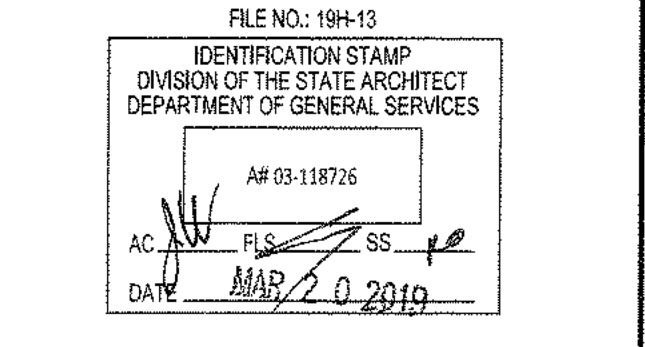
ITEM	DESCRIPTION DETAIL	MAKE AND CATALOG #	REMARKS	REF.	ITEM	DESCRIPTION DETAIL	MAKE AND CATALOG #	REMARKS	REF.
LG	LIFE GUARD W/ UMBRELLA	SEE DETAIL	56 T304 130' OD 145' THK WALL	7 SP3-2	SB	STARTING BLOCK	SEE DETAIL	56 304L 130' OD 145' THK WALL	4 SP3-2
HR	HANDRAIL	SEE DETAIL	56 T304 130' OD 145' THK WALL	2 SP3-5	UP	WATER POLO GOAL	SEE DETAIL	DECK MOUNTED	6 SP3-5
BS	BACKSTROKE STANCHION	SEE DETAIL	56 T304 23' SQ. 180' THK WALL	1 SP3-3	ADA	ACCESSIBLE LIFT	SEE DETAIL	COORD. STANCHION W/ LIFT	8 SP3-2
BSF	BACKSTROKE FLAGS	LINCOLN 53-020		1 SP3-3	LAD	LADDER W/ HINGE	SEE DETAIL	56 T304 130' OD 145' THK WALL, LONG REACH	5 SP3-2
DM	DEPTH MARKERS & WARNING TILES	SEE DETAIL	6' SQ. NON-SLIP ON DECK, 2FT. FROM POOL EDGE TYP.	3 SP3-4	DM	DIVING BOARD	SEE DETAIL		3 SP3-5
GR	GRABRAILS	SEE DETAIL	56 T304 130' OD 145' THK WALL, LONG REACH	6 SP3-2	HB GFCI	TOMBSTONE	SEE DETAIL	JB = JUNCTION BOX, HB = HOSE BIBS W/ VACUUM BREAKER, GFCI = OUTLET	1 SP3-10



tBP Architecture  
4611 Teller Avenue  
Newport Beach, CA 92660  
ph: 949.673.0300 fx: 949.732.3895



ARCH-PAC  
1241 DISTRIBUTION WAY - SUITE 11,  
VISTA, CA 92081  
ph: 760-734-1000  
fx: 760-734-1011



DEPARTMENT OF GENERAL SERVICES  
DSA Los Angeles Regional Office  
700 N. Alameda Street, Suite 5-500  
Los Angeles, California 90012  
ph: (213)897-3995 fx: (213)897-3158/0726

**GLENDALE HIGH SCHOOL  
AQUATIC CENTER**  
GLENDALE UNIFIED SCHOOL DISTRICT  
1440 EAST BROADWAY AVE.  
GLENDALE, CALIFORNIA 91205

tBP project number : 20916.00  
file name:  
drawn by: RT checked by: RM  
date: DECEMBER 13, 2016  
Rev: date: description:

drawing title:  
**POOL DECK PLAN**  
drawing no.:  
**SP1-1**  
drawing of