

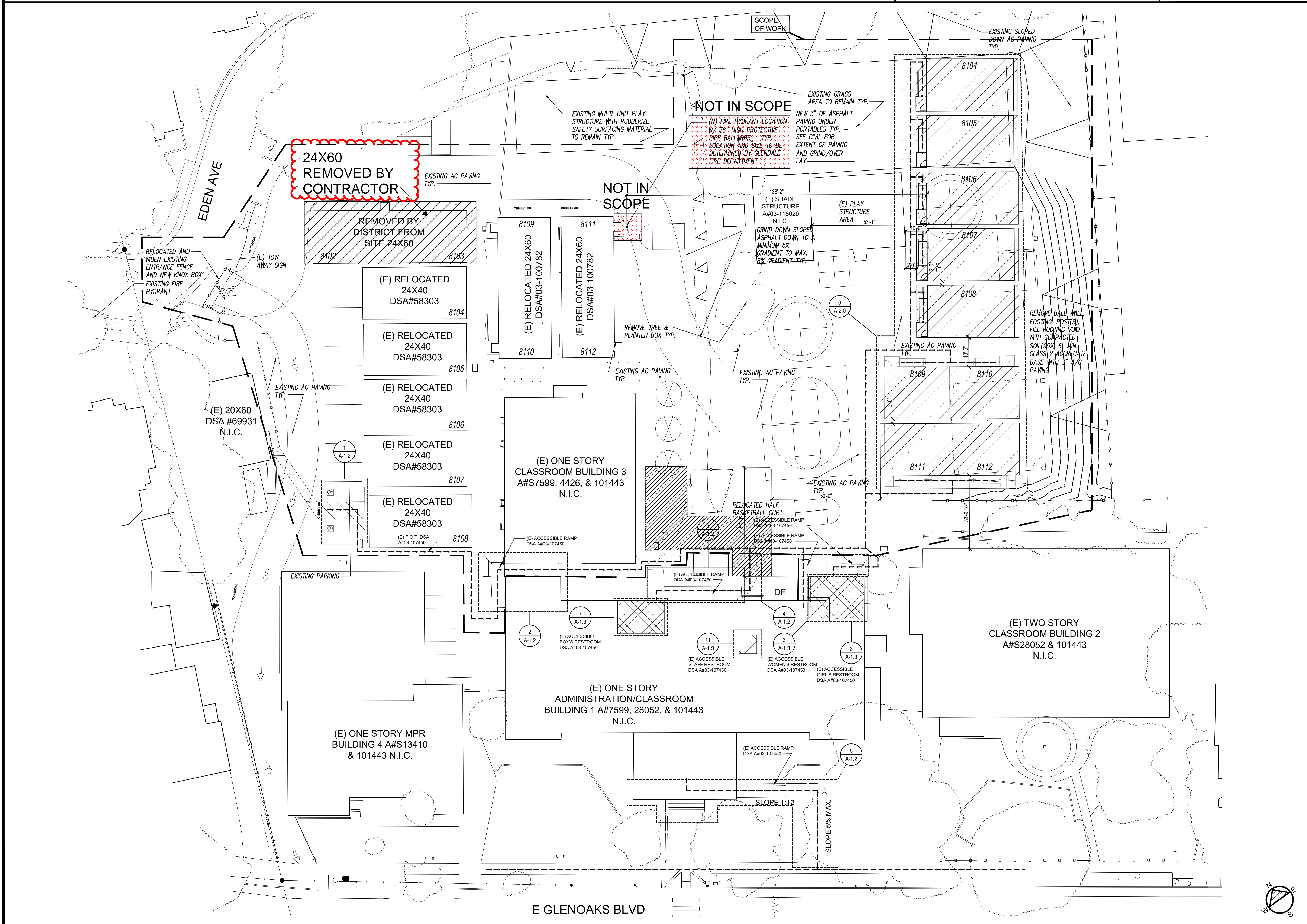
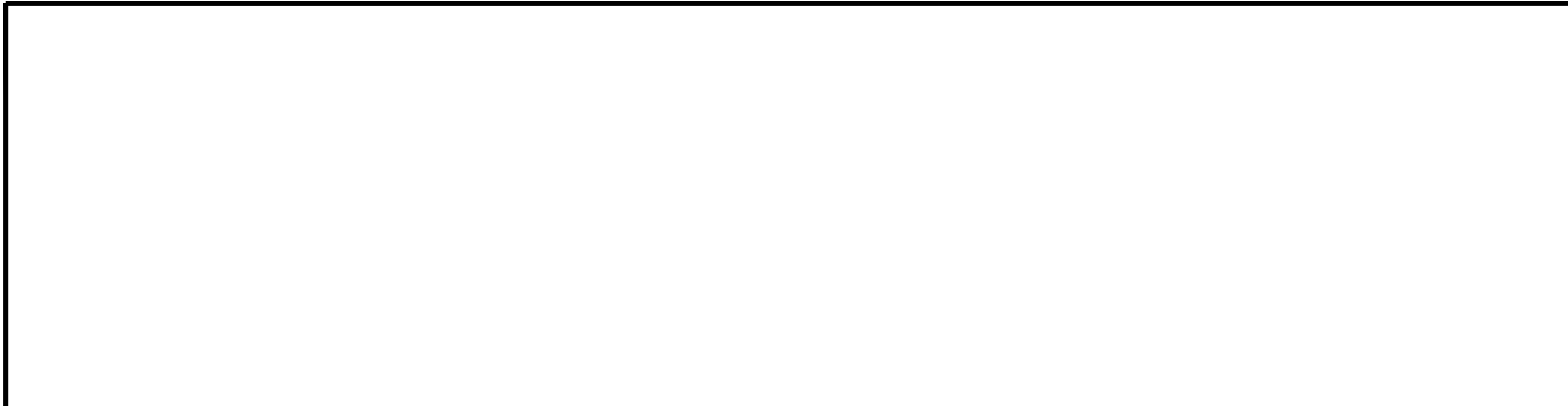
BUILDING DATA					
BLDG.	DESCRIPTION	OCCUPANCY CONST. TYPE	TOTAL AREA	BASIC ALLOWABLE	ACTUAL < ALLOWABLE
1 THRU 5, 8 THRU 11	(5) 24' X 40' PORT. BLDGS. (2) 24' X 60' PORT. BLDGS.	OCC. "E" TYPE VB	1,128 S.F. X 5=5,640 1,536 S.F. X 2=3,072 =8,712 S.F. <small>*PORTABLE OVERHANGS INCLUDED IN CALCULATIONS</small>	9,500 S.F.	8,712 S.F. < 9,500 S.F.
BUILDING HEIGHT: ONE STORY AUTOMATIC FIRE SPRINKLER: NO PROVISION NOT REQUIRED				OCC. CALCULATION	
				24' X 40' PORT. BLDG. = 960 SQ. FT. /20 = 48 OCC. PER ROOM	
				24' X 60' PORT. BLDGS. (2 ROOMS PER 24' X 60' BLDG) = 720 SQ. FT. /20 = 36 OCC PER ROOM	
8108 = 1990 MOBILE MODULAR DSA #53703 SERIAL #1176/1177 8107 = 1992 AURORA DSA #58303 SERIAL #12136/12139 8106 = 1992 AURORA DSA #58303 SERIAL #12136/12137 8105 = 1992 AURORA DSA #58303 SERIAL #12134/12135 8104 = 1992 AURORA DSA #58303 SERIAL #16471/16472 8109/8110 = 1997 MODTECH DSA # 03-100782 SERIAL #19230/19231 8111/8112 = 1997 MODTECH DSA #03-100782 SERIAL # 29109/29110					

SCOPE OF WORK	
RELOCATION OF 5-24' X 40' AND 2-24' X 60' TEMPORARY PORTABLE CLASSROOM BUILDING SUPPORTED ON NEW NON CONFORMING WOOD FOUNDATION BY MANUFACTURER. NEW WOOD FOUNDATION TO COMFORM WITH CBC 2016. PROVIDE NEW ADA DOOR SIGNAGE, ALS SIGNAGE AND RECEIVERS, NEW ELECTRICAL DATA AND FIRE ALARM DEVICES.	
SITE LEGEND / NOTES	
	RELOCATED PORTABLE BUILDING
	EXISTING BUILDINGS
	ACCESSIBLE PATH OF TRAVEL
	(E) GENDER NEUTRAL TOILET
	(E) BOYS/GIRLS TOILET
	(E) DRINKING FOUNTAIN

GENERAL PATH OF TRAVEL ADA NOTES

*DESIGN PROFESSIONAL IN GENERAL RESPONSIBLE CHARGE STATEMENT: THE POT IDENTIFIED IN THESE CONSTRUCTION DOCUMENTS IS COMPLIANT WITH THE CURRENT APPLICABLE CALIFORNIA BUILDING CODE ACCESSIBILITY PROVISIONS FOR PATH OF TRAVEL REQUIREMENTS FOR ALTERATIONS, ADDITIONS AND STRUCTURAL REPAIRS. AS PART OF THE DESIGN OF THIS PROJECT, THE POT WAS EXAMINED AND ANY ELEMENTS, COMPONENTS OR PORTIONS OF THE POT THAT WERE DETERMINED TO BE NONCOMPLIANT 1) HAVE BEEN IDENTIFIED AND 2) THE CORRECTIVE WORK NECESSARY TO BRING THEM INTO COMPLIANCE HAS BEEN INCLUDED WITHIN THE SCOPE OF THIS PROJECT'S WORK THROUGH DETAILS, DRAWINGS AND SPECIFICATIONS INCORPORATED INTO THESE CONSTRUCTION DOCUMENTS. ANY NONCOMPLIANT ELEMENTS, COMPONENTS OR PORTIONS OF THE POT THAT WILL NOT BE CORRECTED BY THIS PROJECT BASED ON VALUATION THRESHOLD LIMITATIONS OR A FINDING OF UNREASONABLE HARDSHIP ARE SO INDICATED IN THESE CONSTRUCTION DOCUMENTS. DURING CONSTRUCTION, IF POT ITEMS WITHIN THE SCOPE OF THE PROJECT REPRESENTED AS CODE COMPLIANT ARE FOUND TO BE NONCONFORMING BEYOND REASONABLE CONSTRUCTION TOLERANCES, THEY SHALL BE BROUGHT INTO COMPLIANCE WITH THE CBC AS A PART OF THIS PROJECT BY MEANS OF A CONSTRUCTION CHANGE DOCUMENT."

PARKING TABULATION	
(E) PARKING AREA 6 (A#04-107450)	
TOTAL (E) PARKING SPACES PROVIDED	= 14
TOTAL ACCESSIBLE PARKING SPACES REQUIRED	= 1
TOTAL ACCESSIBLE PARKING SPACES PROVIDED	= 2
1 - 9' x 18' VAN ACCESSIBLE PARKING STALL	
1 - 9' x 18' STANDARD ACCESSIBLE PARKING STALL	



OVERALL SITE PLAN 1" = 60'-0" 1

DC ARCHITECTS
 820 N. MOUNTAIN AVENUE
 UPLAND, CA 91786
 (909) 985-6838 OFFICE
 (909) 985-0864 FAX

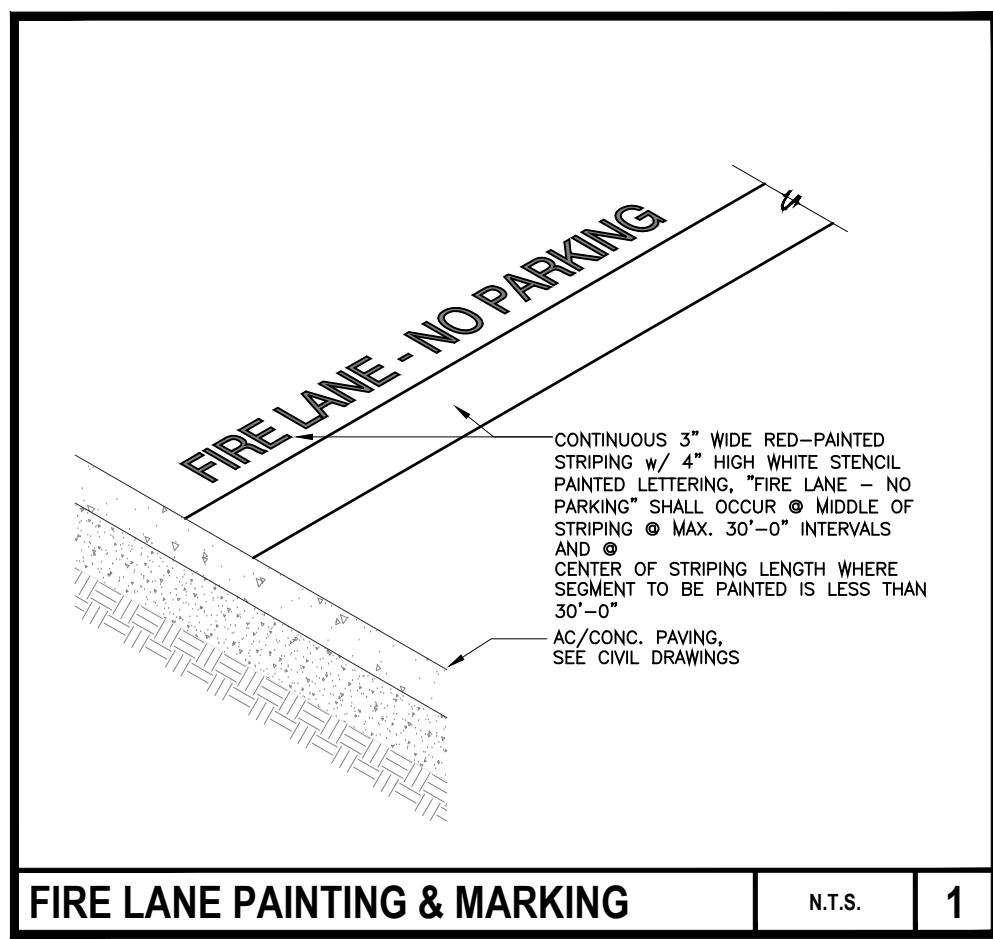
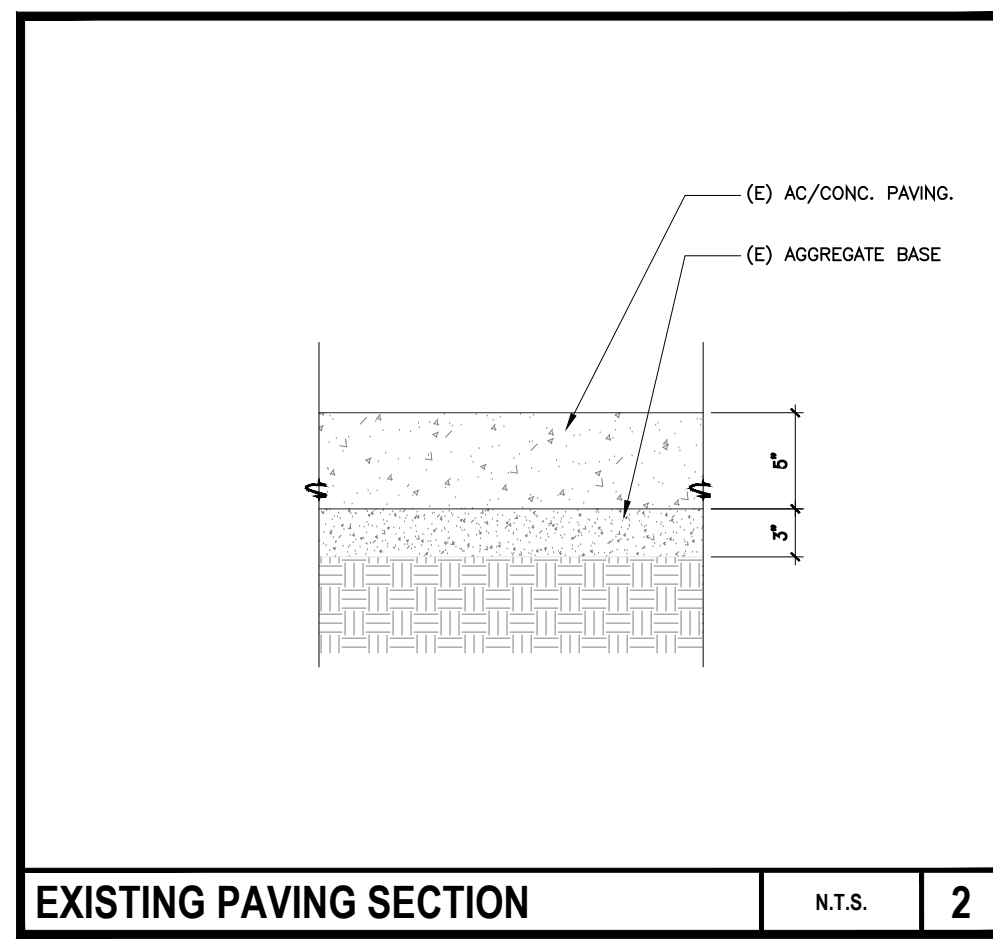
INTERIM PORTABLE CLASSROOM RELOCATION
 GLENOAKS ELEMENTARY SCHOOL
 2015 E. GLENOAKS BLVD.
 GLENDALE, CALIFORNIA 91206
 GLENDALE UNIFIED SCHOOL DISTRICT

OVERALL SITE PLAN
 INTERIM HOUSING

DATE: 03.16.2021
 DRAWN BY: [Name]
 CHECKED BY: [Name]
 00-00000

A-1.0

BID NO. 210-20/21



Glendale Fire Department Fire Flow Information

11/20/2019 RELEASED TO: FACILITIES PLANNING, DEVELOPMENT & SUPPORT OPERATIONS

City of Glendale
 300 W. Magnolia Avenue
 Glendale, CA 91204

Subject: 2015 East Glendale Blvd
 Fire Flow Test, Fire Hydrant No. 1618-032

Dear Mr. Smith:

Per your request, the City has conducted a fire flow test at a fire hydrant near your proposed project at 2015 East Glendale Blvd. Hydrant ID # 1618-032 was used to determine the theoretical fire flow available with a residual pressure of 20 pounds psi (see Appendix A) in the water distribution piping. The test shows a calculated discharge of 300 gpm (see Appendix B).

The fire flow test results have been forwarded to the Glendale Fire Department. Verification of the sufficiency of the flow for your project may be obtained from them. The Glendale Fire Department Fire Flow Information data of the fire flow test has been enclosed with this letter.

If you have any questions regarding the fire flow test, you may contact me at (818) 951-6906 or via email at GFD@glendale.gov.

Very Truly Yours,
 Sarah J. Smith
 Senior Civil Engineer

Attachment: Glendale Fire Department Fire Flow Information

BUILDING DATA						
BLDG.	DESCRIPTION	OCCUPANCY CONST. TYPE	TOTAL AREA	BASIC ALLOWABLE	ACTUAL < ALLOWABLE	
1 THRU 5	(5) 24' X 40' PORT. BLDGS.	OCC. "E"	1,128 S.F. X 5 = 5,640	9,500 S.F.	8,712 S.F. < 9,500 S.F.	
8 THRU 11	(2) 24' X 60' PORT. BLDGS.	TYPE VB	1,536 S.F. X 2 = 3,072			
			= 8,712 S.F.			
BUILDING HEIGHT: ONE STORY				OCC. CALCULATION		
AUTOMATIC FIRE SPRINKLER: NO PROVISION NOT REQUIRED				24' X 40' PORT. BLDG. = 960 SQ. FT. /20 = 48 OCC. PER ROOM		
				24' X 60' PORT. BLDGS. (2 ROOMS PER 24' X 60' BLDG) = 720 SQ. FT. /20 = 36 OCC PER ROOM		

- ### FIRE MARSHAL SITE NOTES
- PLANS SHALL BE SUBMITTED FOR FIRE APPARATUS ACCESS ROADS FOR REVIEW AND APPROVAL PRIOR TO CONSTRUCTION. FOR EMERGENCY ACCESS AND FIRE FIGHTING PURPOSES, 20 FEET IS REQUIRED PRIOR, DURING CONSTRUCTION AND AFTER PORTABLE BUILDING FINAL, AND SHALL BE MAINTAINED AT ALL TIMES.
 - THE EXISTING ADDRESS IS PROVIDED ON THE ADMINISTRATION BUILDING WITH 12' NUMBERS PLAINLY VISIBLE AND LEGIBLE FROM THE STREET.
 - EXISTING SURFACE - FIRE APPARATUS ACCESS ROADS ARE DESIGNED AND MAINTAINED TO SUPPORT THE IMPOSED LOADS OF FIRE APPARATUS AND ARE PROVIDED WITH A SURFACE SO AS TO PROVIDE ALL-WEATHER DRIVING CAPABILITIES.
 - COMMERCIAL DUMPSTERS OR CONTAINERS WITH AN INDIVIDUAL CAPACITY OF 1.5 CUBIC YARDS OR GREATER SHALL NOT BE STORED OR PLACED WITHIN FIVE FEET OF COMBUSTIBLE ROOF EAVE LINES UNLESS AREAS CONTAINING DUMPSTERS ARE PROTECTED BY AN APPROVED SPRINKLER SYSTEM. FIRE CODE CHAPTER 3.
 - EXISTING KNOX PAD LOCKS ON ALL FIRE DEPT. ACCESS AS PER FIRE DEPARTMENT REQUIREMENTS. INSPECTOR WILL PLACE AT WALK THRU FOR BUILDING FINAL. A KNOX BOX IS REQUIRED AT THE MAIN BUILDING.
 - ALL FIRE HYDRANTS ARE EXISTING HYDRANTS 2 1/2" X 4". HYDRANTS ARE INSTALLED PER SPECIFICATION OF CITY GLENDALE WATER AND POWER.
 - THE EXISTING ALL WEATHER SURFACE ACCESSIBLE TO NEW CLASSROOMS SHALL BE PROVIDED AND MAINTAINED.
 - EXIT DOORS SHALL BE OPENABLE FROM THE INSIDE WITHOUT USE OF A KEY OR ANY SPECIAL KNOWLEDGE OR EFFORT. CBC 2019 TITLE 24 1010.
 - WIDTH AND HEIGHT OF REQUIRED EXIT DOORWAYS TO COMPLY WITH CBC 2019 TITLE 24 1003, 1005, 1010.
 - EXITS SHALL BE ILLUMINATED AT ANY TIME THE BUILDING IS OCCUPIED WITH LIGHT HAVING AN INTENSITY OF NOT LESS THAN (1) FIVE FOOT-CANDELS AT FLOOR LEVEL. CBC 2019 TITLE 24 1006.
 - FENCES AND GATES TO COMPLY WITH CBC 2019 TITLE 24 1008. LOCKING DEVICES TO COMPLY WITH CITY OF GLENDALE FIRE DEPARTMENT REGULATIONS.
 - FIRE RESISTANCE OF EXTERIOR WALLS SHALL COMPLY WITH C.B.C. TABLE 601.

SCOPE OF WORK

RELOCATION OF 5-24' X 40' AND 2-24' X 60' TEMPORARY PORTABLE CLASSROOM BUILDING SUPPORTED ON NEW NON-CONFORMING WOOD FOUNDATION BY MANUFACTURER. NEW WOOD FOUNDATION TO CONFORM WITH CBC 2016. PROVIDE NEW ADA DOOR SIGNAGE, ALS SIGNAGE AND RECEIVERS, NEW ELECTRICAL DATA AND FIRE ALARM DEVICES.

SITE LEGEND / NOTES

	RELOCATED PORTABLE BUILDING		GENDER NEUTRAL TOILET
	EXISTING BUILDINGS		BOYS/GIRLS TOILET
	ACCESSIBLE PATH OF TRAVEL		FIRE ACCESS LANE
	(E) FLOOR LIGHT		

LOCAL FIRE AUTHORITY REVIEW

DSA 810
FIRE & LIFE SAFETY SITE CONDITIONS SUBMITTAL

Division of the State Architect (DSA) documents referenced within this publication are available on the [DSA Website](http://www.dsa.ca.gov) or www.dsa.ca.gov website.

To facilitate the Division of the State Architect's (DSA) fire and life safety plan review of project site conditions, DSA requires the design professional to provide the following information at the time of project submittal for project construction of a new campus, construction of new buildings, additions to existing buildings, and for site alternate design means for the department emergency vehicle access, and fire suppression water supply information associated with compliance items 1 through 3 below is to be provided for all project types indicated above. Information associated with items 4 through 7 is to be completed when an alternate means is utilized. Acknowledgment by the school district and signature from the Local Fire Authority (LFA) is only required when an alternate design means is being requested.

The Project Information and Fire & Life Safety Information sections are to be completed for all projects and stamped onto the fire access site plan. When an alternate design means is proposed, all sections on pages 1 and 2 are to be completed and stamped on the fire access site plan.

For additional information refer to the instructions at the end of this form and DSA Policy PL 09-01: Fire Flow for Buildings.

PROJECT INFORMATION

School District/Owner: Glendale Unified School District
 Project Name/School: Glendale Fire Prevention (818) 958-4810
 Project Address: 2015 E. Glendale Blvd. FEB 17 2021
 Approved by: [Signature]

FIRE & LIFE SAFETY INFORMATION

1. Has a fire hydrant flow test been performed within the past 12 months? (If not, provide a copy of the test.)	Yes <input checked="" type="checkbox"/>	No <input type="checkbox"/>
2. Was the fire hydrant water flow test performed as part of the LFA review?	Yes <input checked="" type="checkbox"/>	No <input type="checkbox"/>
3. Is the project located within a designated fire hazard severity zone (FHSZ) as established by Cal-Fire? (If yes, indicate FHSZ classification.)	Yes <input type="checkbox"/>	No <input type="checkbox"/>

Refer to the following website for FHSZ locations: Moderate High Very High

Wildland Interface Area (WIFA) (If any designations are checked, project design must meet the requirements of CBC Chapter 7A.)

Wildland Interface Area (WIFA) High WIFA

DSA 08A 810 (Rev. 12/2020) DIVISION OF THE STATE ARCHITECT DEPARTMENT OF GENERAL SERVICES STATE OF CALIFORNIA Page 1 of 4

DSA 810 FIRE & LIFE SAFETY SITE CONDITIONS SUBMITTAL

CONDITION MEANS AND METHODS RESOLUTION

CONDITION MEANS AND METHODS RESOLUTION	ALTERNATE ACCEPTED		
	YES	NO	N/A
4. Emergency vehicle access roadways do not meet CFC requirements.			X
4a. Acceptable Alternative: Emergency vehicle and personnel access as proposed by the project architect is acceptable for providing fire suppression and protection of life and property.	X		
5. Fire Hydrants: Number and spacing does not meet CFC requirements.			X
5a. Acceptable Alternative: Number of fire hydrants and spacing as proposed by the project architect is acceptable for fire suppression and protection of life and property.	X		
6. Fire Hydrants: Water flow and pressure are less than CFC minimum.			X
6a. Acceptable Alternative: The available flow and pressure is acceptable for providing fire suppression and protection of life and property.	X		
7. Location of fire department connection(s) serving the sprinkler system or standpipe system does not meet CFC requirements.			X
7a. Acceptable Alternative: The location of fire department connection serving the fire sprinkler system and/or standpipe system is acceptable for providing fire suppression and protection of life and property.	X		

School District Acceptance of Acceptable Design Alternates

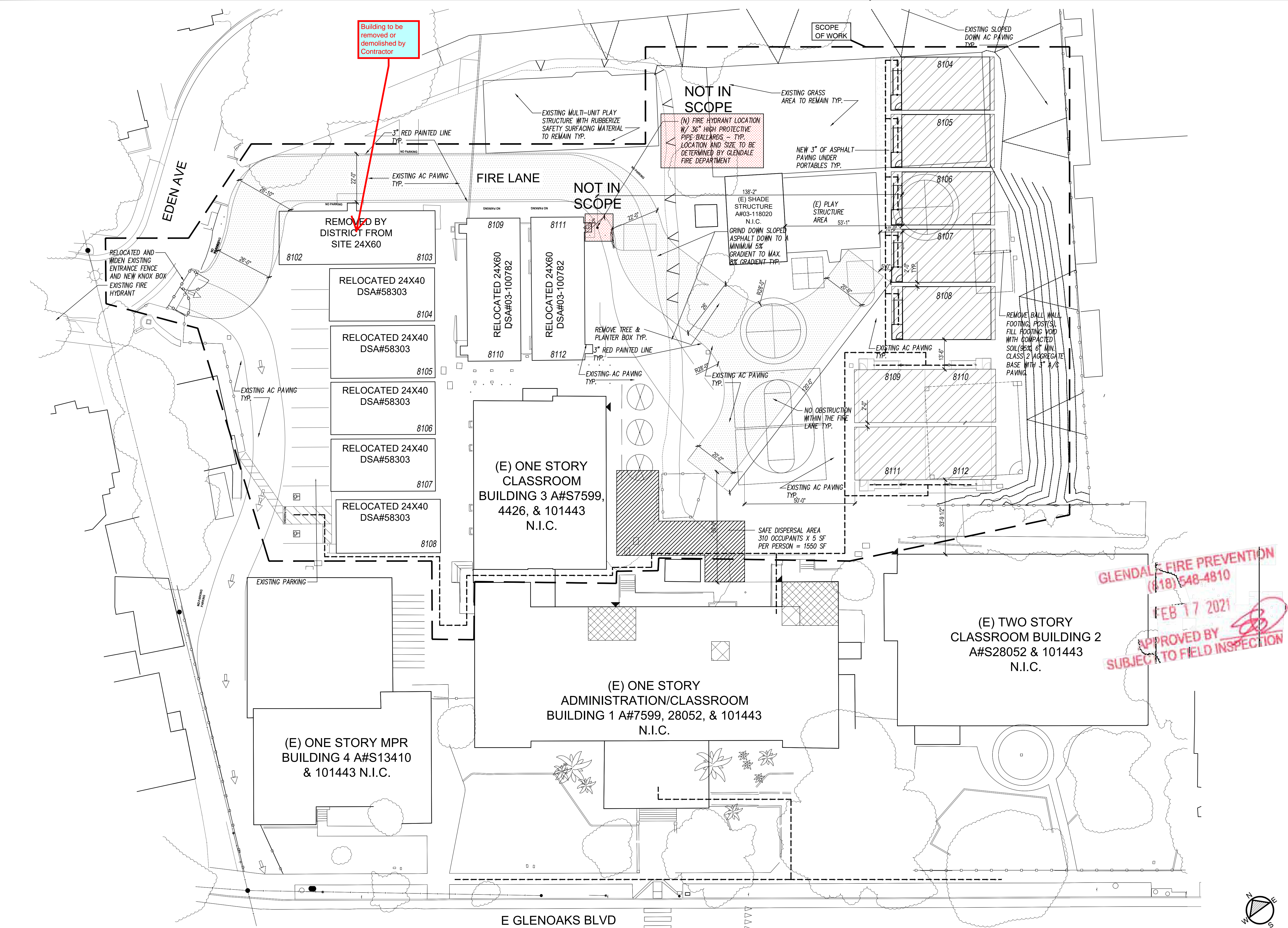
By signing this form, the school district acknowledges and accepts the proposed design as an alternative to California Building Code (CBC) and California Fire Code (CFC) minimum requirements, as indicated by one or more of the conditions indicated at items 4a, 5a, 6a, 6c or 7a, for providing fire and life safety protection of life and property.

Accepted by: _____ Title: _____
 Signature: _____ Date: _____

LOCAL FIRE AUTHORITY (LFA) INFORMATION

LFA Agency Name: Glendale Fire Department
 LFA Review Official: Lisa Demjan
 Title: Sr. Fire Flow Safety Specialist
 Work Email: lsdemjan@glendaleca.gov
 Work Phone: (818) 937-8105

LFA Reviewer's Signature: [Signature] Date: 02-17-2021



Signature: _____ Date: _____

LOCAL FIRE AUTHORITY (LFA) INFORMATION

LFA Agency Name: Glendale Fire Department
 LFA Review Official: Lisa Demjan
 Title: Sr. Fire Flow Safety Specialist
 Work Email: lsdemjan@glendaleca.gov
 Work Phone: (818) 937-8105

LFA Reviewer's Signature: [Signature] Date: 02-17-2021

DSA 08A 810 (Rev. 12/2020) DIVISION OF THE STATE ARCHITECT DEPARTMENT OF GENERAL SERVICES STATE OF CALIFORNIA Page 2 of 4

REVISIONS

DC ARCHITECTS

820 N. MOUNTAIN AVENUE
 UPLAND, CA 91786
 (909) 985-6838 OFFICE
 (909) 985-0864 FAX

INTERIM PORTABLE CLASSROOM RELOCATION
 GLENOAKS ELEMENTARY SCHOOL
 2015 E. GLENOAKS BLVD.
 GLENDALE, CALIFORNIA 91206
 GLENDALE UNIFIED SCHOOL DISTRICT

OVERALL SITE PLAN -
 LOCAL FIRE AUTHORITY -
 INTERIM HOUSING

A-1.1

BID NO. 210-20/21