

Date: 3/21/2022

ADDENDUM 01

To Project Bidding Documents for:

**GLENDALE HIGH SCHOOL
ADMIN. ENTRY REMODEL
GLENDALE UNIFIED SCHOOL DISTRICT**

DSA Appl. No. 03-121680
DSA File No. 19-H13

tBP Project No. 21059.00

tBP/ARCHITECTURE
4611 Teller Avenue
Newport Beach, CA 92660
949-673-0300

TO: PROSPECTIVE BIDDERS

This Addendum forms a part of the Contract Documents and modifies the original Bidding Drawings and Specifications dated December 9, 2021. Acknowledge receipt of this Addendum in space provided on the Bid Form. Failure to acknowledge may subject Bidder to disqualification.

CHANGES TO DRAWINGS

1. SHEET A-1 DEMO AND REMODEL FLOOR PLAN
Replace Sheet A-1 Demo and Remodel Floor Plan in its entirety issued with this addendum. Changes include:
 - a. Update wall mounted equipment.
 - b. Patch and replace drinking fountain tile as required – match existing.
2. SHEET A-2 DEMO AND REMODEL CEILING PLAN
Replace Sheet A-2 Demo and Remodel Plan in its entirety issued with this addendum. Changes include:
 - a. Update ceiling mounted equipment.
3. SHEET A-3 INTERIOR ELEVATIONS AND DETAILS
Replace Sheet A-3 Interior Elevations and Details in its entirety issued with this addendum. Changes include:
 - a. Update interior elevations per equipment.
4. SHEET E-2.0 ENLARGED ELECTRICAL DEMOLITION PLAN
Replace Sheet Enlarged Electrical Demolition Plan in its entirety issued with this addendum. Changes include:
 - a. Revised Demolition Plan to show the CCTV camera as remove and relocated as shown in clouded area on drawing.
 - b. Added Plan Note 6 as shown in clouded area of drawing.

5. SHEET E-2.1 ENLARGED RENOVATION ELECTRICAL PLANS
Replace Sheet E-2.1 Enlarged Renovation Electrical Plans in its entirety issued with this addendum. Changes include:
- a. Revised Renovation Power and Signal Plan to show the location of the relocated CCTV camera as shown in clouded area on Drawing.
 - b. Added Plan Note 3 as shown in clouded area of Drawing.

ATTACHMENTS

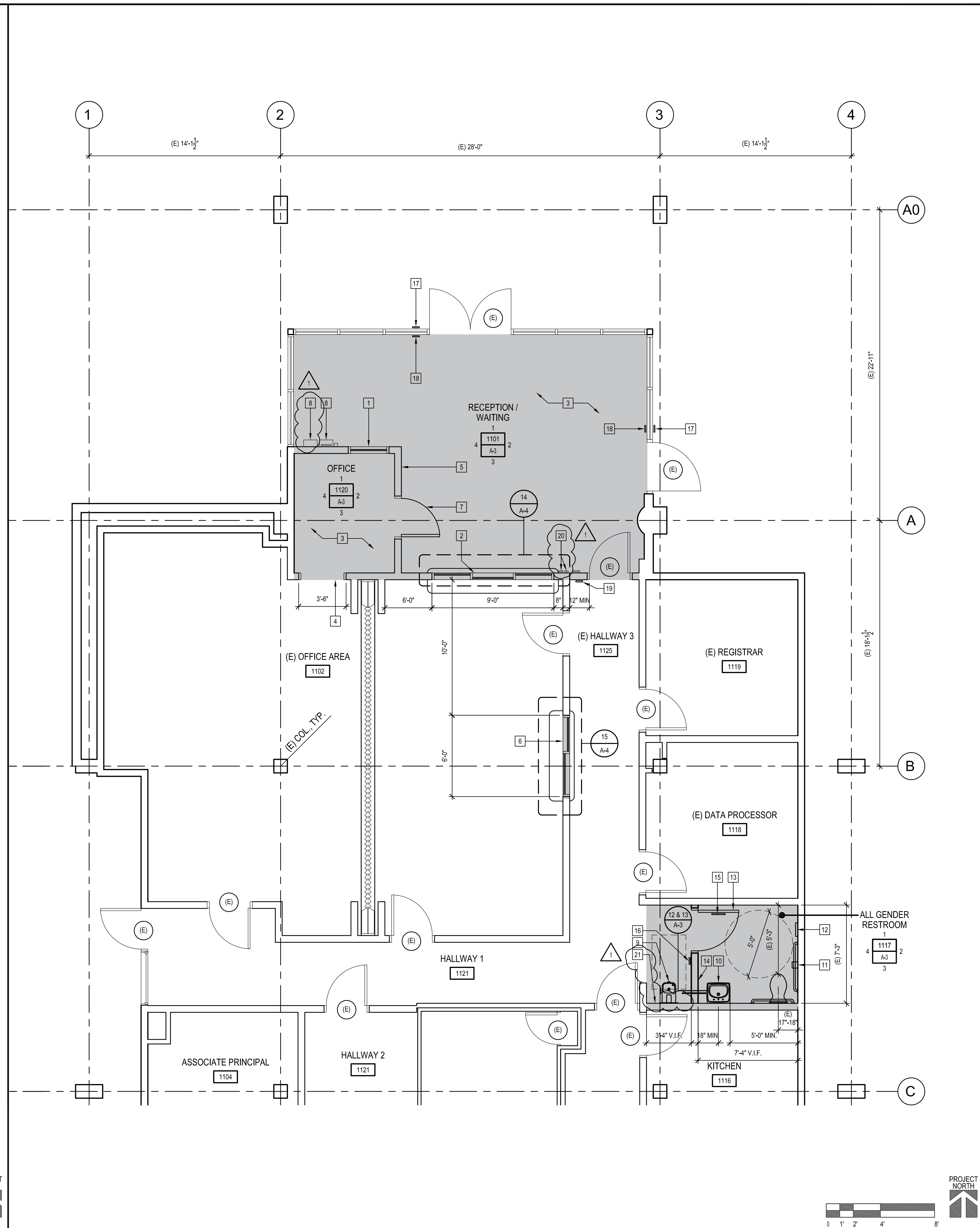
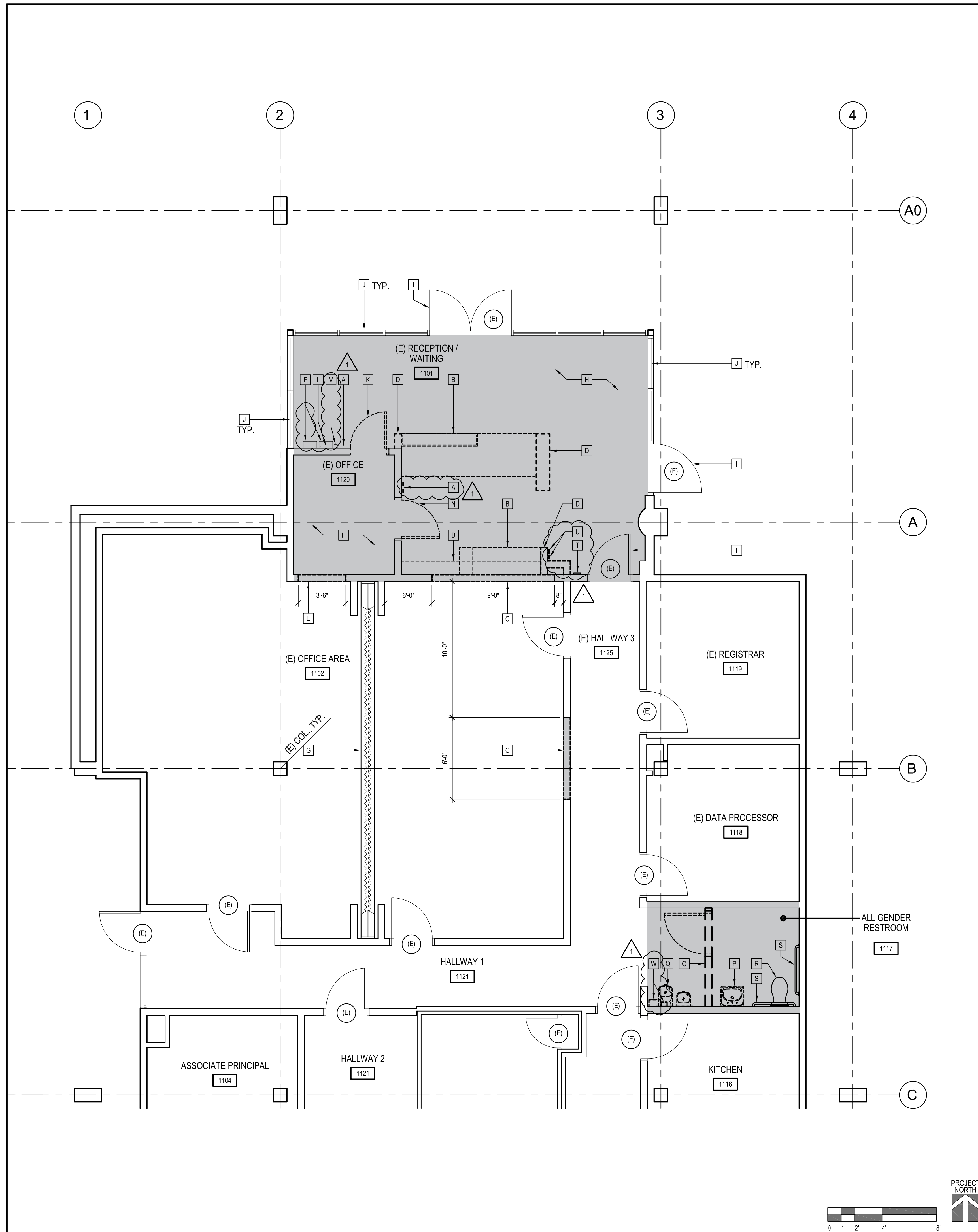
The following attachments are a part of Addendum 01:

1. **Full Size Documents (30" x 42") Drawings: (Total 5)**

A-1
A-2
A-3
E-2.0
E-2.1



Hung Cheng
tBP/Architecture



ENLARGED DEMOLITION FLOOR PLAN 1
SCALE: 1/4" = 1'-0"

ENLARGED REMODEL FLOOR PLAN 2
SCALE: 1/4" = 1'-0"

LEGEND
AREA OF WORK
ITEMS TO BE REMOVED
GENERAL NOTES
1. NO DEMOLITION SHALL BEGIN UNTIL PLANS INCLUDING THE DEMOLITION WORK HAVE BEEN APPROVED BY DSA.

DEMOLITION KEYNOTES	
A REMOVE (E) ROOM SIGNAGE	P REMOVE AND RELOCATE (E) LAV. - PATCH AND REPAIR (E) WALL FINISH AS REQUIRED
B REMOVE (E) BUILT-IN CASEWORK	Q REMOVE (E) DRINKING FOUNTAIN - PATCH AND REPAIR (E) WALL FINISH AS REQUIRED
C DEMO PORTION OF (E) WALL FOR NEW WINDOW - SEE REMODEL PLAN	R (E) ACCESSIBLE TOILET TO REMAIN - PROTECT IN PLACE
D REMOVE (E) WALL	S (E) GRAB BARS TO REMAIN - PROTECT IN PLACE
E REMOVE PORTION OF (E) WALLS AND PROVIDE OPENING	T (E) FIRE PULL DOWN TO REMAIN - PROTECT IN PLACE
F (E) FIRE ALARM NOTIFIER AND FIRE ALARM BLDG PLAN TO REMAIN	U REMOVE AND RELOCATE (E) THERMOSTAT
G (E) FOLDING PARTITION WALL TO REMAIN - PROTECT IN PLACE	V (E) FIRE ALARM STROBE LIGHT TO REMAIN - PROTECT IN PLACE
H REMOVE (E) FLOORING	W REMOVE (E) DISPENSERS - RETURN TO THE DISTRICT
I (E) DOOR - PROTECT IN PLACE	
J (E) WINDOW SYSTEM - PROTECT IN PLACE	
K REMOVE (E) DOOR AND FRAME	
L (E) FIRE ACCESS MAP TO REMAIN	
M (E) ROOM IDENTIFICATION SIGNAGE TO REMAIN	
N REMOVE (E) DOOR - (E) FRAME TO REMAIN - SALVAGE (E) DOOR HARDWARE	
O REMOVE AND RELOCATE (E) DOOR AND WALL - PATCH AND REPAIR (E) WALL FINISH AS REQUIRED	

LEGEND
AREA OF WORK
(E) DOORS #A03-110374
GENERAL NOTES
1. PATCH AND REPAIR (E) WALLS AND PAINT AS REQUIRED FOR REMODEL AREAS.
2. CAP ALL UNUSED ELECTRICAL OUTLETS AND DATA JACKS AS REQUIRED.

REMODEL KEYNOTES	
1 INFILL DOOR OPENING FOR (N) WINDOW, PATCH, REPAIR, AND PAINT - SEE DETAIL 17/A-4	14 (N) WALL TO MATCH EXISTING WALL TYPE AND FINISH
2 PROVIDE STOREFRONT WITH COUNTER WITH SLIDING WINDOW AND INTERCOM - PATCH AND REPAIR OPENING AS REQUIRED - SEE DETAIL 14/A-4	15 DOOR MOUNTED RESTROOM SIGN - SEE DETAIL 5/A-4
3 (N) VCT FLOORING - MATCH (E) COLOR AND PATTERN	16 WALL MOUNTED RESTROOM SIGN - SEE DETAIL 6/A-4
4 PROVIDE FRAME AND THRESHOLD FOR NEW OPENING, PATCH AND REPAIR EXISTING FLOORING - SEE DETAIL 16/A-4	17 ISA SIGN - SEE DETAIL 17/A-3
5 PATCH/REPLACE (E) GYP. BD.	18 EXIT SIGN - SEE DETAIL 18/A-3
6 PROVIDE STOREFRONT WITH COUNTER WITH SLIDING WINDOW AND INTERCOM - PATCH AND REPAIR OPENING AS REQUIRED - SEE DETAIL 15/A-4	19 EXIT ROUTE SIGN - SEE DETAIL 16/A-3
7 REPLACE (E) DOOR WITH HOLLOW METAL DOOR W/ VISION LITE. USE (E) DOOR HARDWARE - SEE DETAIL 12/A-4	20 RELOCATED (E) THERMOSTAT
8 (E) FIRE ALARM NOTIFIER TO REMAIN	21 PATCH AND REPLACE DRINKING FOUNTAIN TILE AS REQUIRED - MATCH EXISTING
9 ACCESSIBLE DRINKING FOUNTAIN WITH BOTTLE FILLER - SEE DETAIL 18/A-5	
10 RELOCATED (E) LAV. - SEE DETAIL 5/A-5	
11 TOILET PAPER DISPENSER	
12 SEAT COVER DISPENSER	
13 RELOCATED (E) DOOR FRAME - DOOR HARDWARE PER 11/A-3	

AF 03 - 121680
 DIVISION OF THE STATE ARCHITECT
 355 S. GRAND AVE., SUITE 2100
 LOS ANGELES, CA 90071
 ph: 213.897.3995 fx: 213.897.3159/0726

agency

architecture
 planning
 interiors

LICENSED ARCHITECT
 WALTER L. COOPER
 No. 43475
 STATE OF CALIFORNIA

IBP Architecture
 4611 Teller Avenue
 Newport Beach, CA 92660
 ph: 949.673.0300

architect

consultant

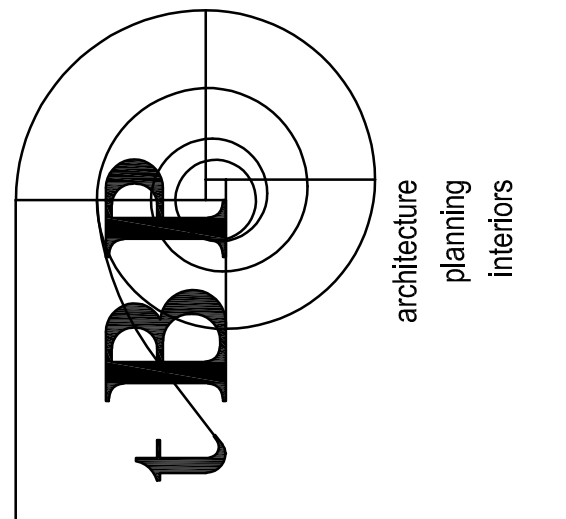
owner

GLENDALE HIGH SCHOOL
ADMIN. ENTRY REMODEL
 GLENDALE UNIFIED SCHOOL DISTRICT
 1440 EAST BROADWAY
 GLENDALE, CALIFORNIA 91205

IBP project number : 21059.00
 file name: A-1_Demo Floor Plan.dwg
 drawn by: JG checked by:
 date: 7/29/2021
 Rev: date: description:
 3/21/2022 ADDENDUM 1

THE DRAWING AND THE DESIGN, SPECIFICATIONS, MEASUREMENTS AND OTHER INFORMATION CONTAINED HEREIN CONSTITUTE UNPUBLISHED WORK OF ARCHITECTURE AND SHALL REMAIN THE PROPERTY OF ARCHITECTURE IN PERPETUITY. NO PART THEREOF SHALL BE REPRODUCED, DISCLOSED, DISTRIBUTED, SOLD, RENTED OR OTHERWISE USED IN ANY MANNER WITHOUT THE ADVANCED EXPRESS WRITTEN CONSENT OF ARCHITECTURE.

drawing title:
DEMO AND REMODEL FLOOR PLAN
 drawing no.:
A-1
 drawing 6 of 8



William L. Gordon
 LICENSED ARCHITECT
 No. 6419
 STATE OF CALIFORNIA
 tBP Architecture
 4611 Teller Avenue
 Newport Beach, CA 92660
 ph: 949.673.0300

**GLENDALE HIGH SCHOOL
 ADMIN. ENTRY REMODEL**
 GLENDALE UNIFIED SCHOOL DISTRICT
 1440 EAST BROADWAY
 GLENDALE, CALIFORNIA 91205

owner

tBP project number : 21059.00

file name: A-1_Demo Floor Plan.dwg

drawn by: JG checked by:

date: 7/29/2021

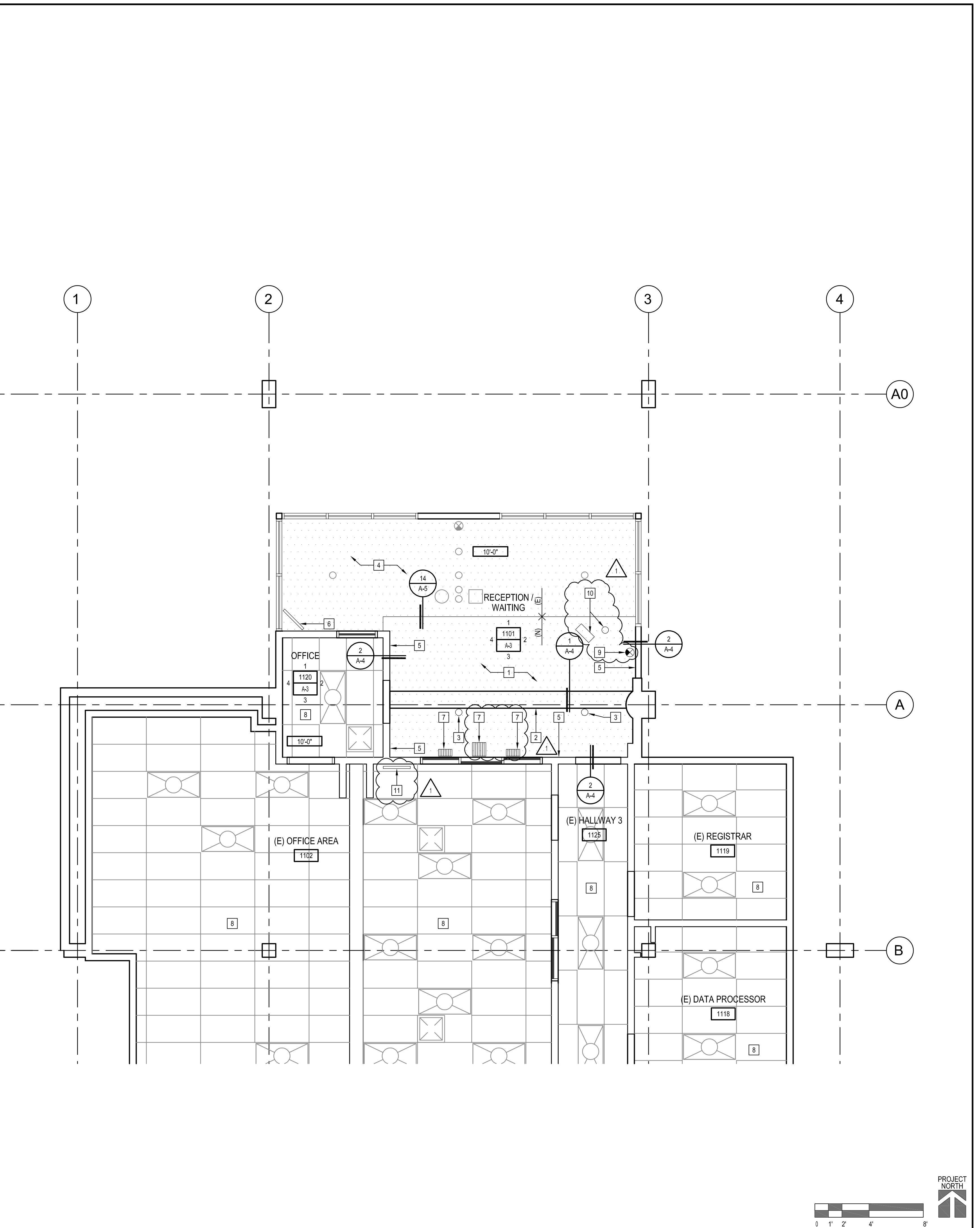
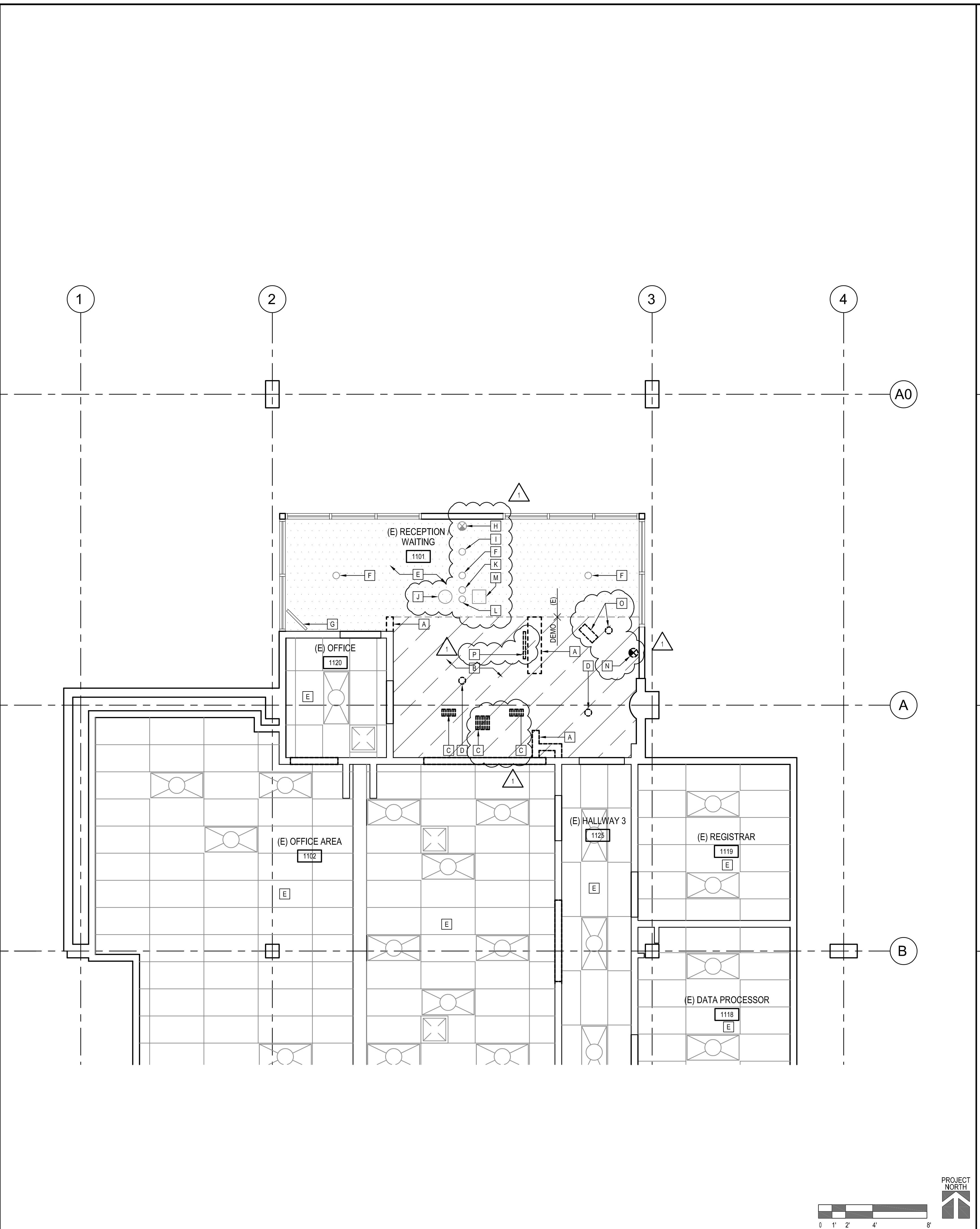
Rev: date: description:

3/21/2022 ADDENDUM 1

THIS DRAWING AND THE DESIGN, SPECIFICATIONS, EXAS AND OTHER INFORMATION CONTAINED HEREIN CONSTITUTE UNPUBLISHED WORK OF ARCHITECTURE AND SHALL REMAIN THE PROPERTY OF ARCHITECTURE. NO PART THEREOF SHALL BE REPRODUCED, DISCLOSED, DISTRIBUTED, MADE PUBLIC OR OTHERWISE USED IN ANY MANNER WITHOUT THE EXPRESS WRITTEN CONSENT OF ARCHITECTURE.

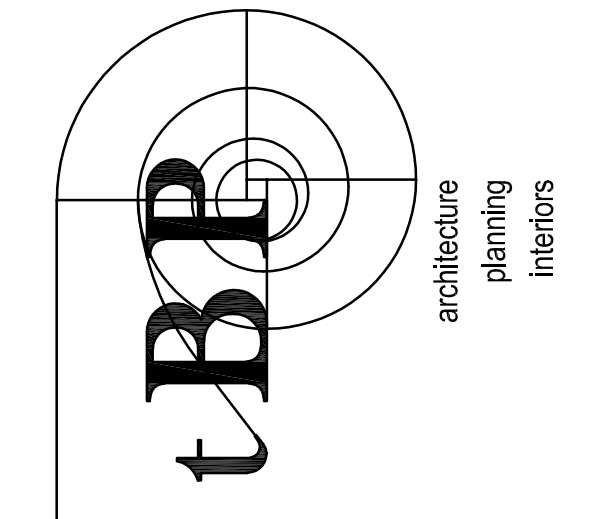
drawing title:
**DEMO AND REMODEL
 CEILING PLAN**

drawing no.:
A-2
 drawing 6 of #



ENLARGED DEMO CEILING PLAN 1	
GENERAL NOTES	LEGEND
1. NO DEMOLITION SHALL BEGIN UNTIL PLANS INCLUDING THE DEMOLITION WORK HAVE BEEN APPROVED BY DSA.	DEMO PORTION OF CEILING
DEMOLITION KEYNOTES	
<ul style="list-style-type: none"> [A] REMOVE (E) WALL [B] DEMO PORTION OF (E) GYP. BD. CEILING [C] (E) MECHANICAL GRILL TO BE RAISED TO (N) CEILING HEIGHT [D] RELOCATE EXISTING LIGHT FIXTURE [E] CEILING TO REMAIN [F] (E) LIGHT FIXTURE TO REMAIN [G] (E) MONITOR TO REMAIN - PROTECT IN PLACE [H] (E) EXIT SIGN TO REMAIN - PROTECT IN PLACE [I] (E) INTRUSION DETECTOR DEVICE TO REMAIN - PROTECT IN PLACE [J] (E) SPEAKER TO REMAIN - PROTECT IN PLACE [K] (E) HEAT DETECTOR TO REMAIN - PROTECT IN PLACE [L] (E) SMOKE DETECTOR TO REMAIN - PROTECT IN PLACE [M] (E) CEILING ACCESS DOOR TO REMAIN - PROTECT IN PLACE [N] REMOVE AND RELOCATE (E) EXIT SIGN PER (N) CEILING HEIGHT [O] REMOVE AND RELOCATE (E) CAMERA PER (N) CEILING HEIGHT [P] REMOVE AND RELOCATE (E) MONITOR PER (N) CEILING HEIGHT 	

ENLARGED REMODEL CEILING PLAN 2	
GENERAL NOTES	REMODEL KEYNOTES
1. PATCH AND REPAIR (E) WALLS AND PAINT AS REQUIRED FOR REMODEL AREAS.	<ul style="list-style-type: none"> [1] NEW GYP. BD. CEILING - SEE DETAIL 2/A-4 [2] (E) CONCRETE BEAM - PROTECT IN PLACE [3] RELOCATED LIGHT FIXTURE [4] (E) CEILING TO REMAIN - PATCH AND REPAIR CEILING AS REQUIRED [5] PROVIDE GYP. BD. ON WALL PER (N) CEILING HEIGHT [6] (E) MONITOR TO REMAIN - PROTECT IN PLACE [7] RELOCATED MECHANICAL GRILL - RELOCATE DUCTWORK AS REQUIRED [8] (E) SUSPENDED CEILING TO REMAIN [9] RELOCATED EXIT SIGN [10] RELOCATED CAMERAS [11] RELOCATED MONITOR



BBP Architecture
 4611 Teller Avenue
 Newport Beach, CA 92660
 ph: 949.673.0300

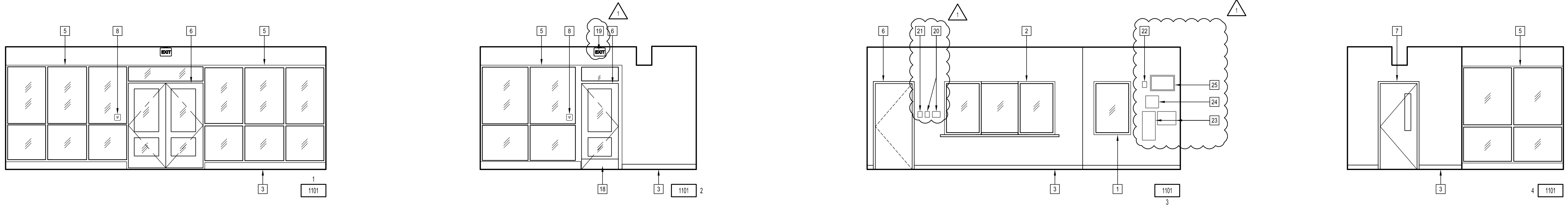
**GLENDALE HIGH SCHOOL
 ADMIN. ENTRY REMODEL**

GLENDALE UNIFIED SCHOOL DISTRICT
 1440 EAST BROADWAY
 GLENDALE, CALIFORNIA 91205

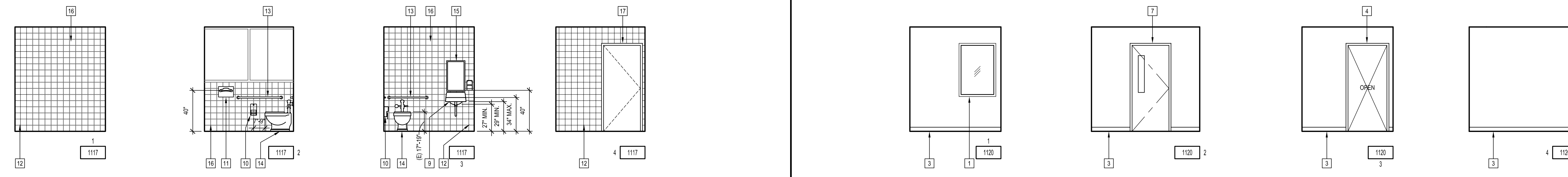
IBP project number : 21059.00
 file name: A-3_interior Elevations.dwg
 drawn by: JG checked by:
 date: 7/29/2021
 Rev: date: description:
 3/21/2022 ADDENDUM 1

drawing title:
**INTERIOR ELEVATIONS
 AND DETAILS**

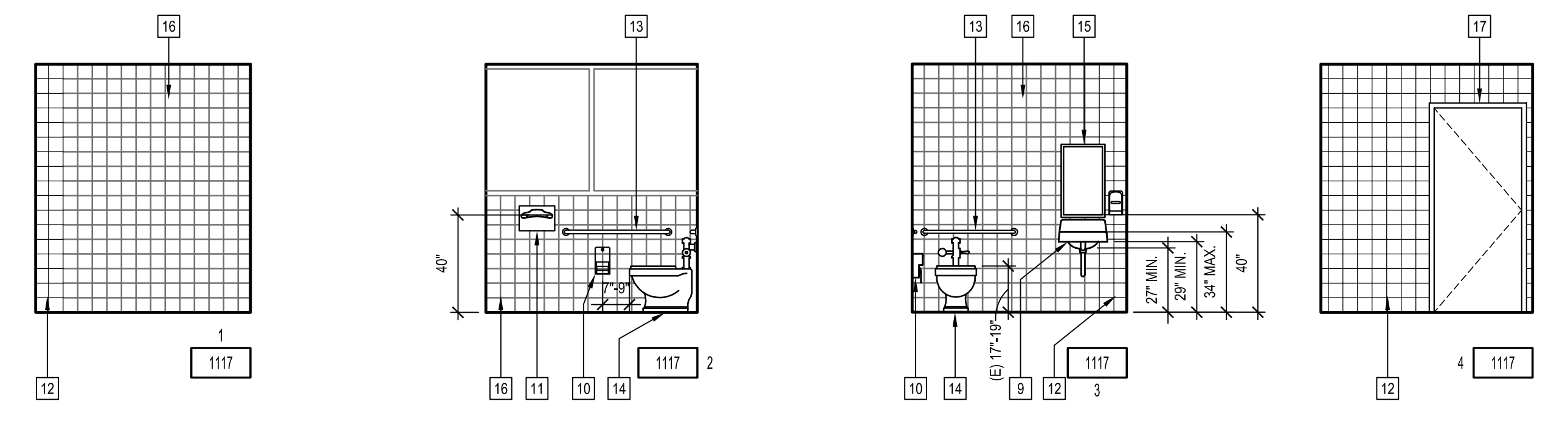
drawing no.:
A-3
 drawing 6 of 9



RECEPTION / WAITING
 SCALE: 1/4" = 1'-0"



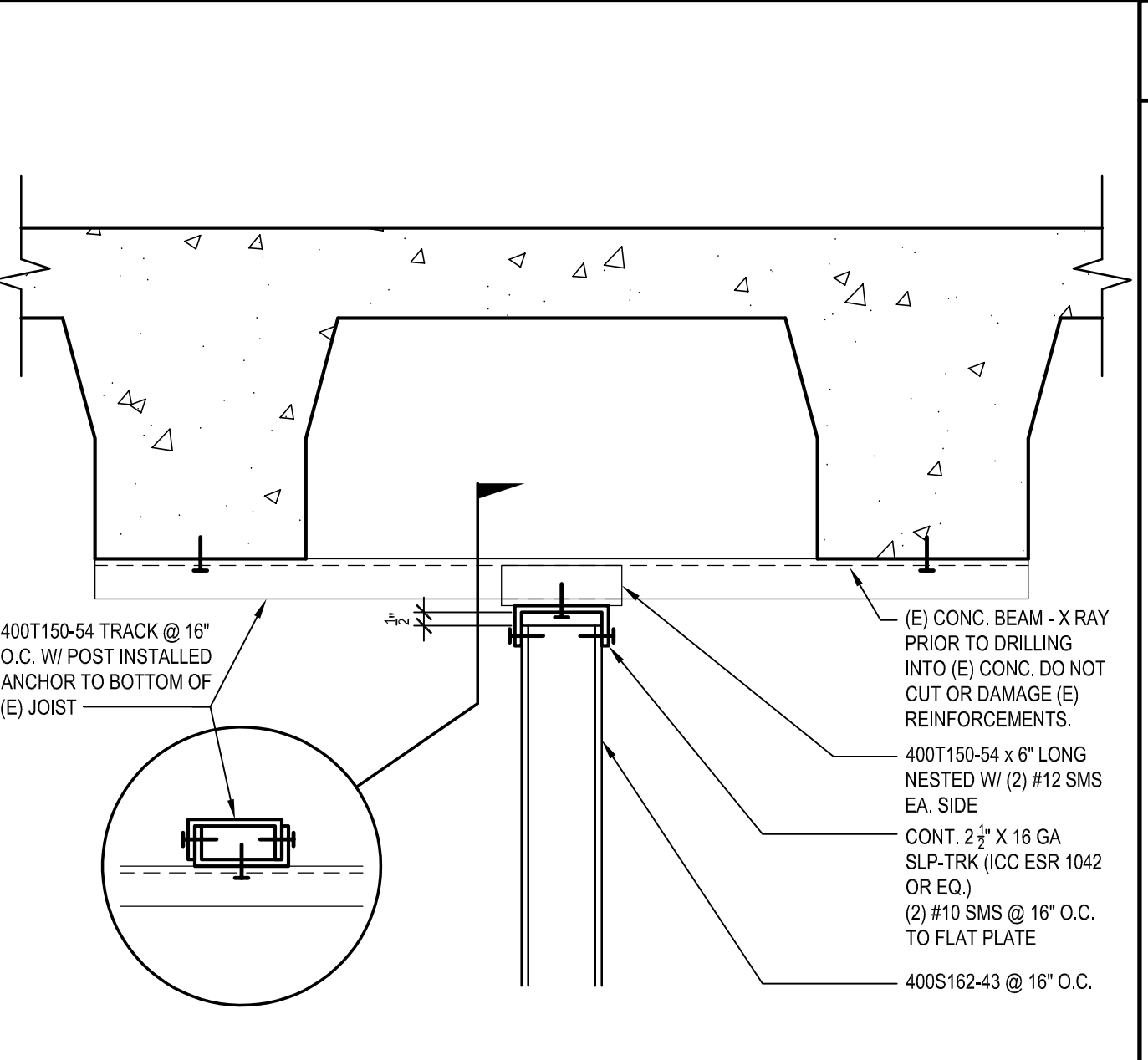
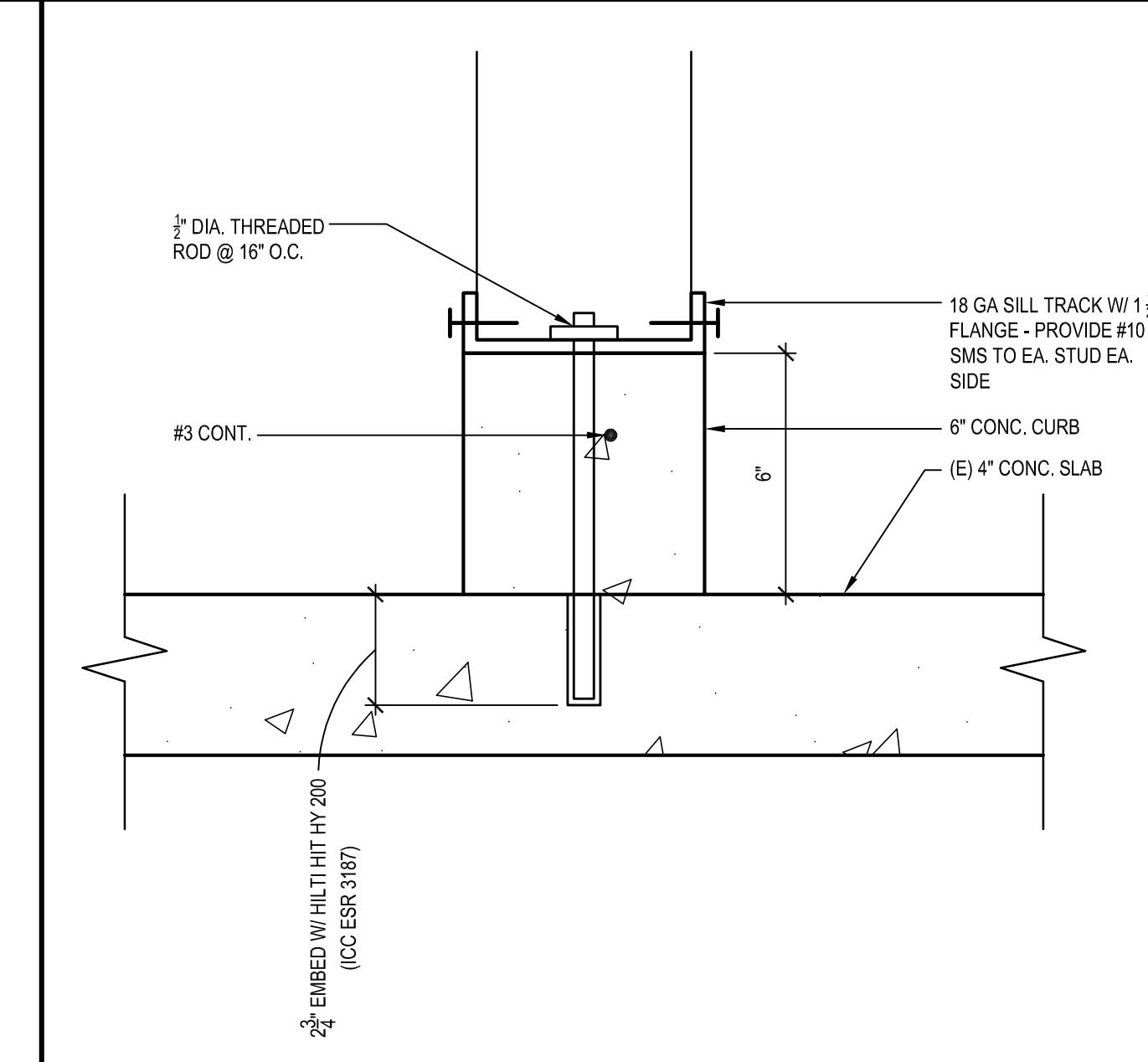
OFFICE
 SCALE: 1/4" = 1'-0"



ALL GENDER RESTROOM
 SCALE: 1/4" = 1'-0"

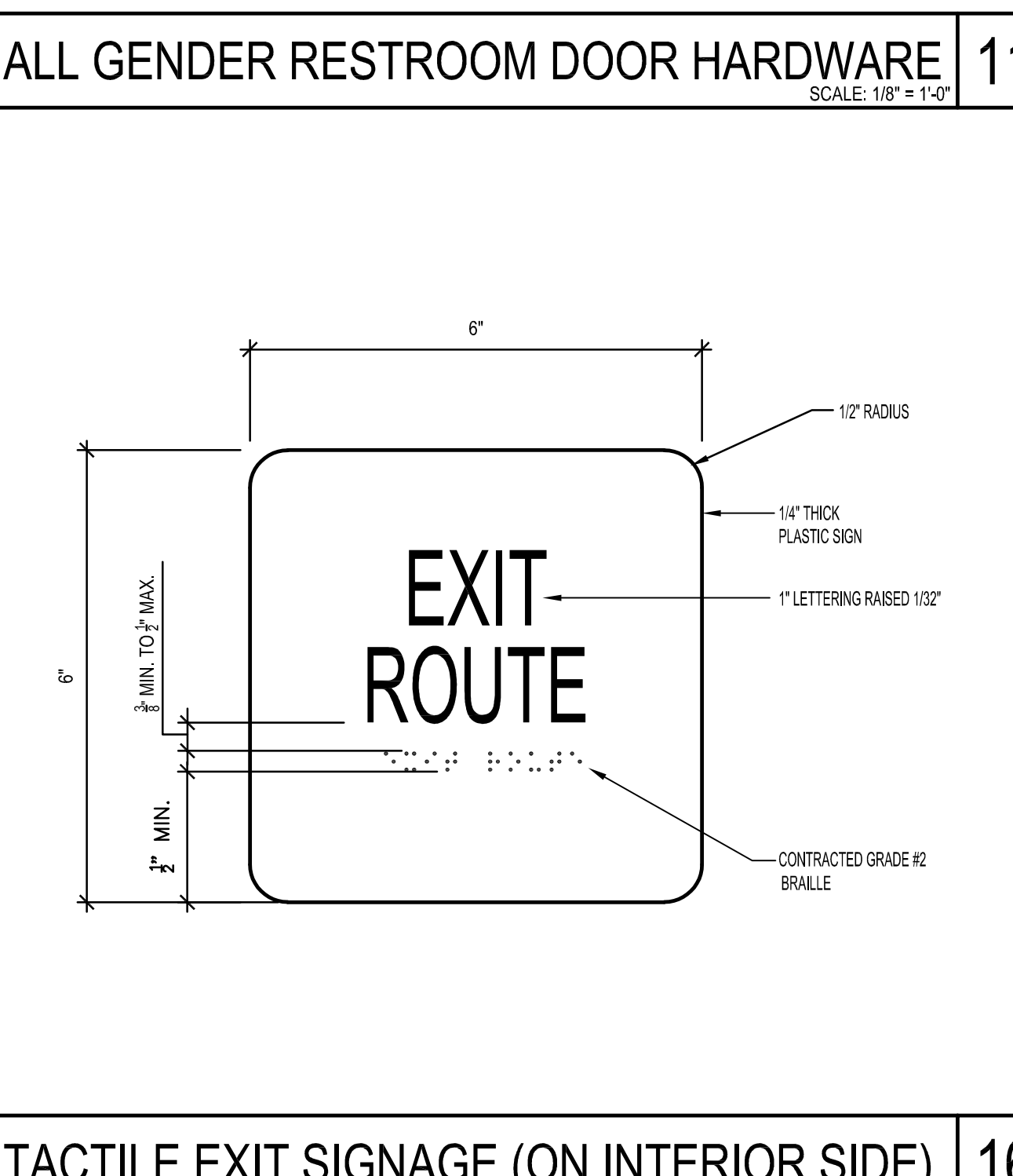
1 SGL DOOR AT ALL GENDER RESTROOM

TOTALS	EACH ASSEMBLY TO HAVE:			
(3)	(3) EA HINGE	58B1 4.5 X 4.5	652	IVE
(1)	(1) EA PRIVACY SET	LV9040 06A L583-363 L283-722	626	SCH
(1)	(1) EA SURFACE CLOSER	4040XP RW/PA	689	LCN
(1)	(1) EA KICK PLATE	8400 10" X 35" B-CS	630	IVE
(1)	(1) SET SEALS	1885 17"	BLK	ZER

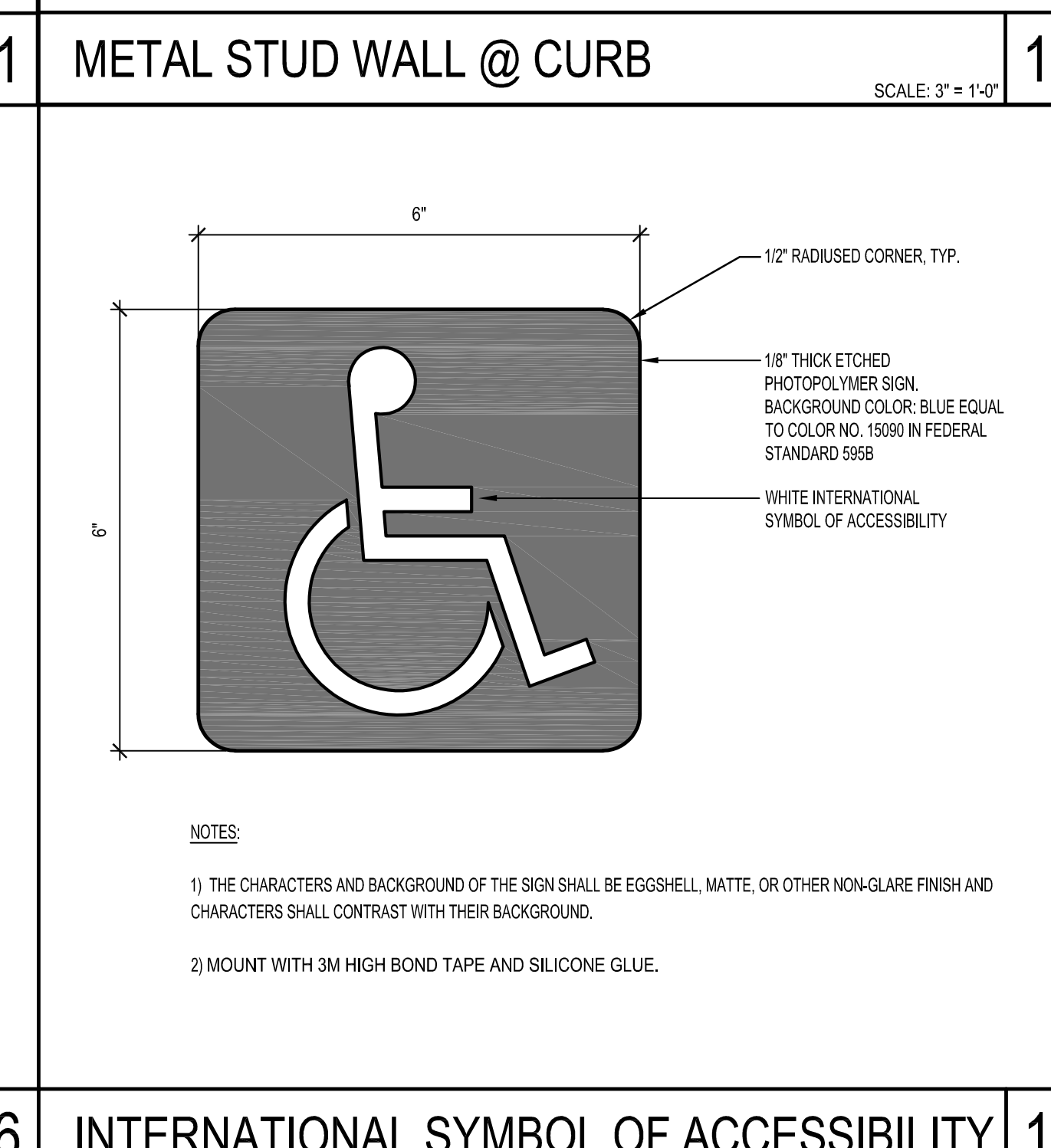


KEYNOTES

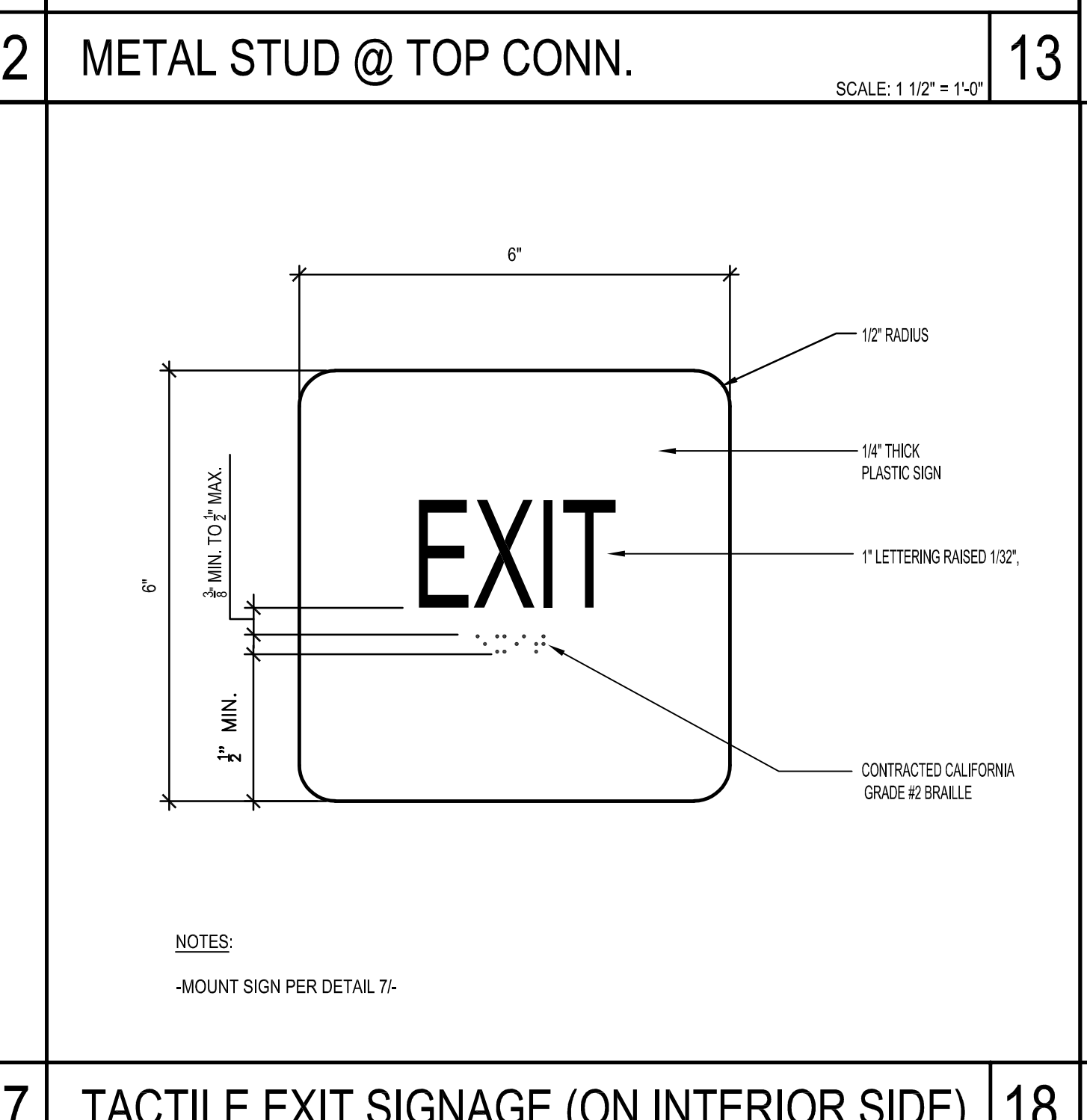
- INFILL DOOR OPENING FOR (N) WINDOW, PATCH, REPAIR, AND PAINT - SEE DETAIL 18/A-4
- PROVIDE GLASS STOREFRONT WITH COUNTER WITH SIDING WINDOW AND INTERCOM - PATCH AND REPAIR OPENING AS REQUIRED - SEE DETAIL 14/A-4
- (N) 4" RUBBER WALL BASE - MATCH (E)
- PROVIDE FRAME AND THRESHOLD FOR NEW OPENING, PATCH AND REPAIR EXISTING FLOORING - SEE DETAIL 18/A-4
- (E) STOREFRONT TO REMAIN.
- (E) DOOR TO REMAIN - (E) OPERATING FORCE SLBS MAX.
- REPLACE (E) DOOR WITH HOLLOW METAL DOOR WITH VISION LIGHT - SEE DETAIL 12/A-4
- EXIT SIGN - SEE DETAIL 18/A-3
- RELOCATED (E) LAV.
- TOILET PAPER DISPENSER
- SEAT COVER DISPENSER
- (N) WALL TO MATCH EXISTING WALL TYPE AND FINISH
- (E) GRAB BAR TO REMAIN PROTECT IN PLACE
- (E) ACCESSIBLE TOILET TO REMAIN - PROTECT IN PLACE
- STAINLESS STEEL MIRROR
- (E) WALL FINISH - PROTECT IN PLACE
- RELOCATED (E) DOOR AND FRAME - DOOR HARDWARE PER 111-
- 10" HEIGHT MIN. KICK PLATE
- RELOCATED EXIT SIGN
- RELOCATED THERMOSTAT
- (E) FIRE PULL DOWN TO REMAIN - PROTECT IN PLACE
- (E) FIRE ALARM STROBE LIGHT TO REMAIN - PROTECT IN PLACE
- (E) FIRE ALARM NOTIFIER TO REMAIN - PROTECT IN PLACE
- (E) FIRE ACCESS MAP TO REMAIN - PROTECT IN PLACE
- (E) MONITOR TO REMAIN - PROTECT IN PLACE



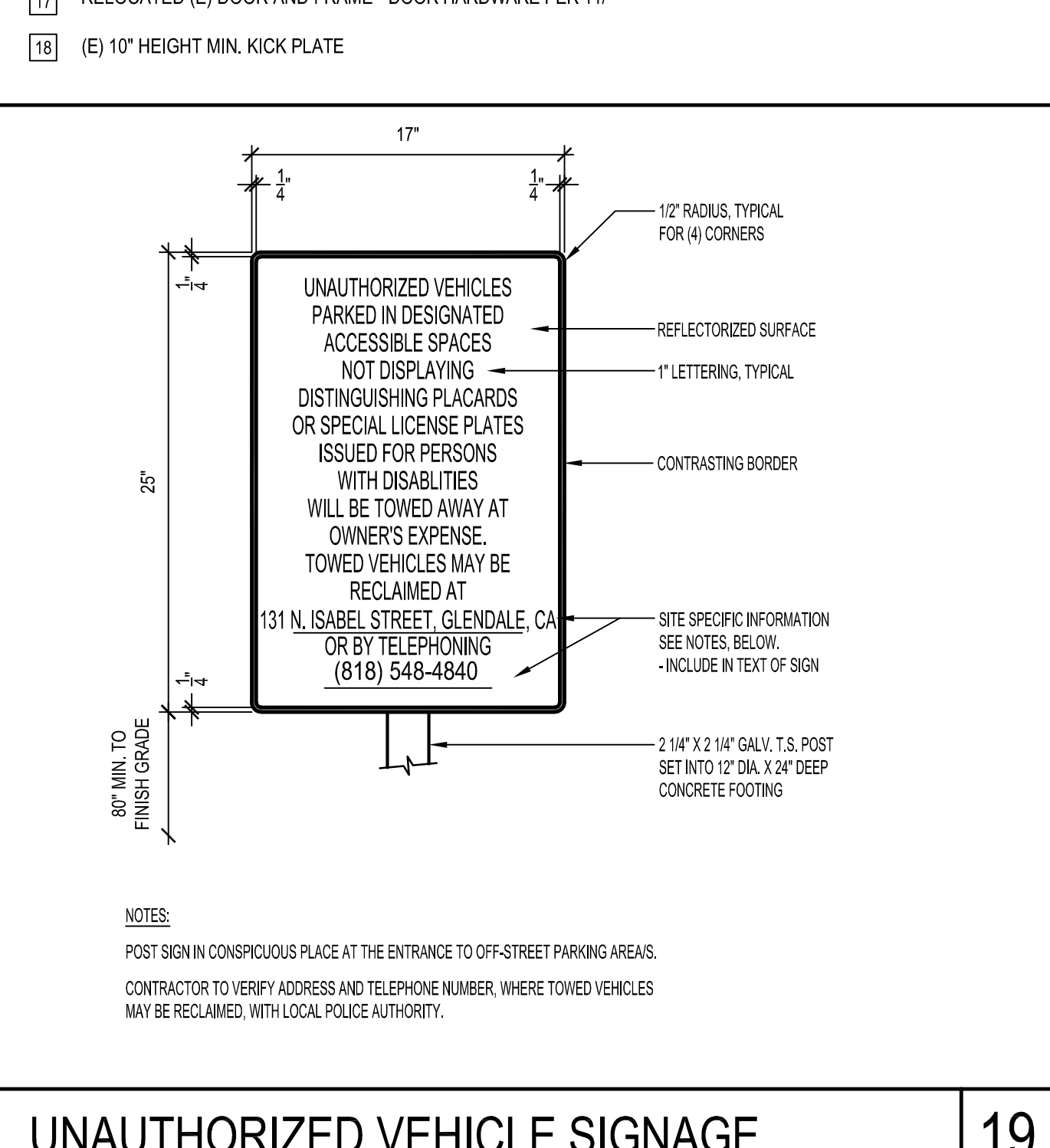
TACTILE EXIT SIGNAGE (ON INTERIOR SIDE)
 SCALE: 1/2"



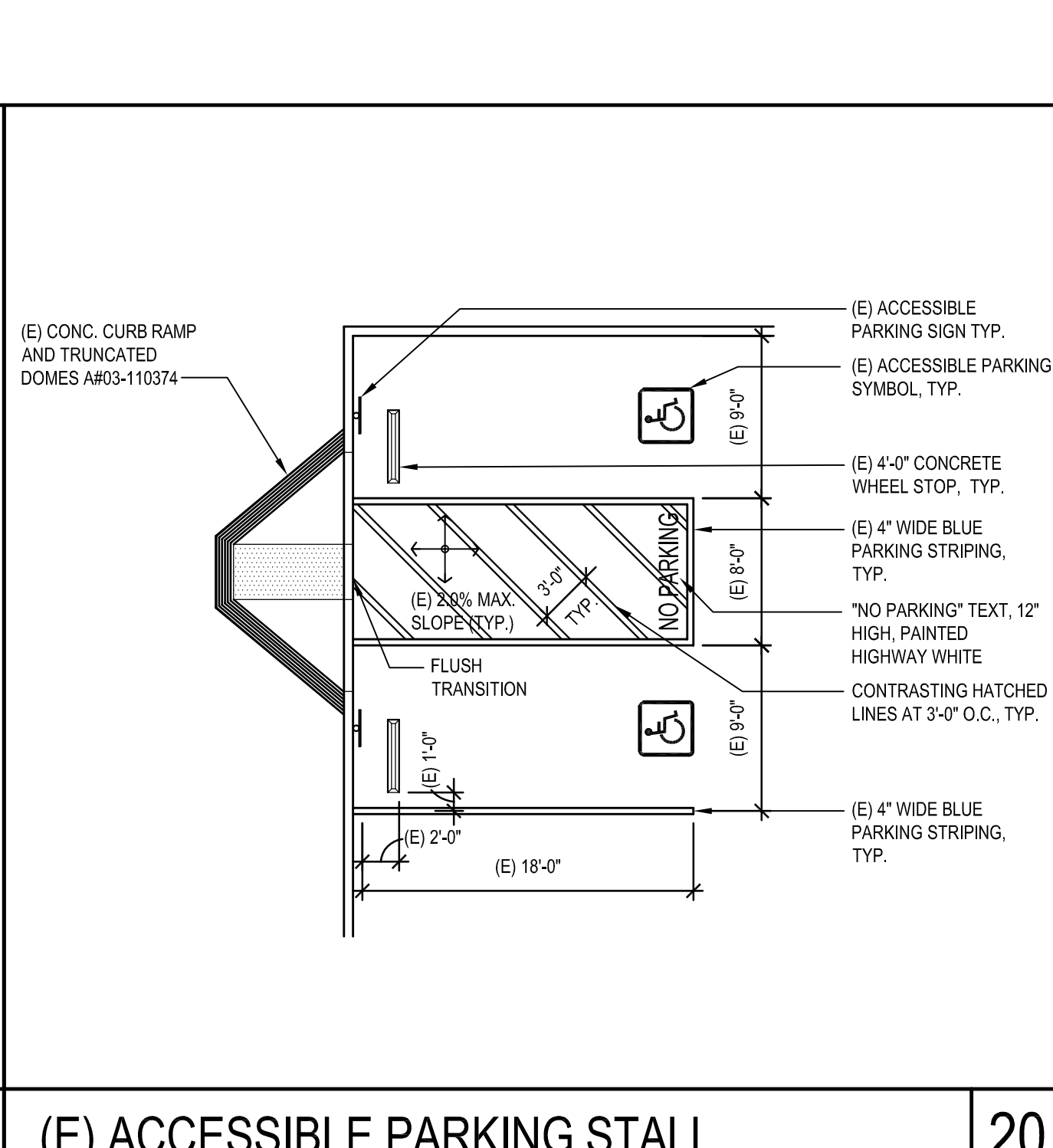
INTERNATIONAL SYMBOL OF ACCESSIBILITY
 SCALE: 1/2"



TACTILE EXIT SIGNAGE (ON INTERIOR SIDE)
 SCALE: 1/2"

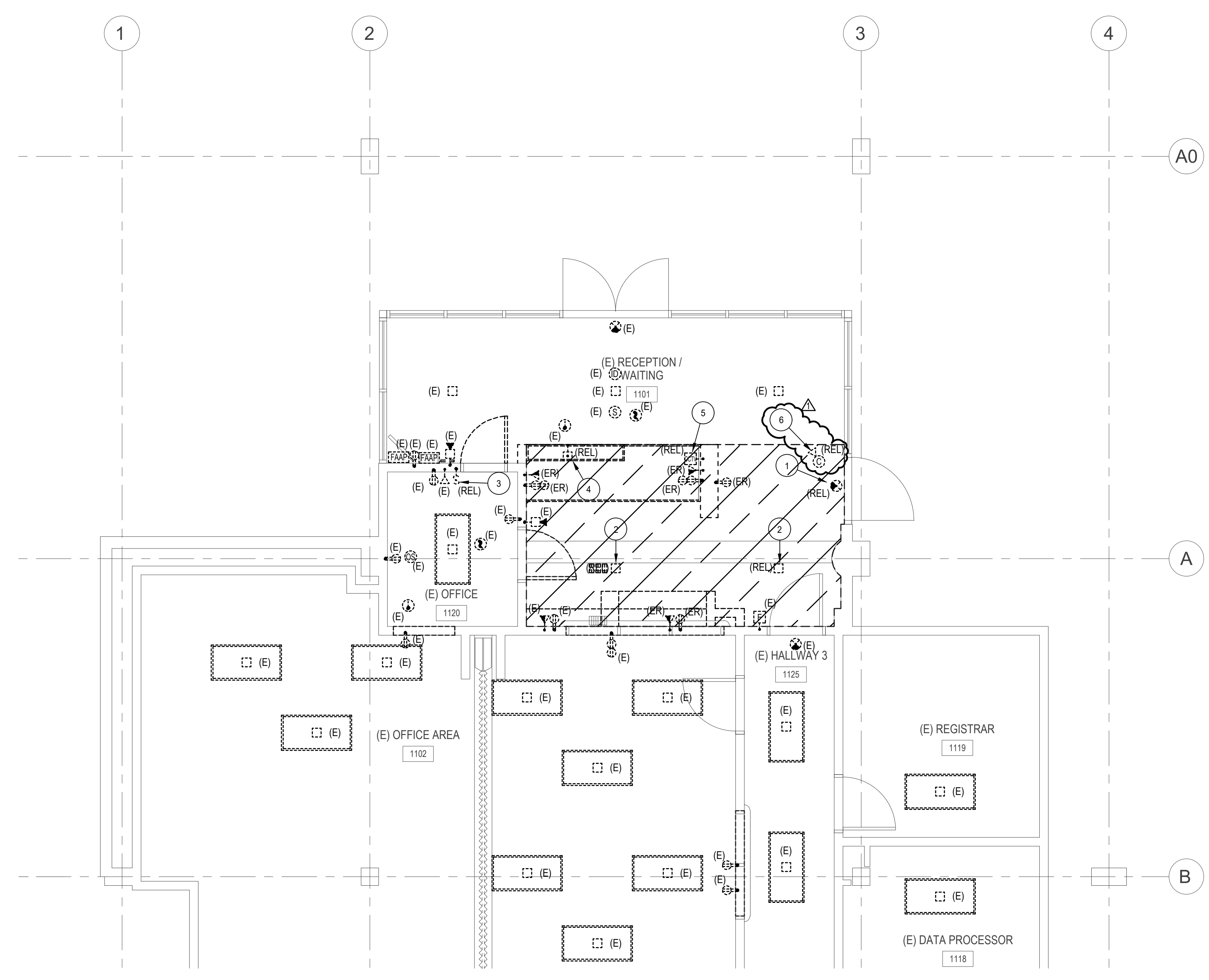


UNAUTHORIZED VEHICLE SIGNAGE
 SCALE: 1/2" = 1'-0"



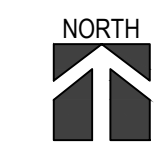
(E) ACCESSIBLE PARKING STALL
 SCALE: 1/8" = 1'-0"

FBA Engineering / Plot Date: 3/21/2022 12:44 PM / Drawing Location: I:\21279\21279.dwg / Plotted by: Don Fleishman / Drawing Location: I:\21279\21279.dwg / E-2.0 Enlarged Electrical Demolition Plan.dwg



LEGEND

- (E) - EXISTING TO REMAIN
- (RE) - EXISTING DEVICE TO BE REMOVED
- (REL) - EXISTING DEVICE TO BE RELOCATED



ENLARGED ELECTRICAL DEMOLITION PLAN

SCALE: 1/4" = 1'-0" **1**

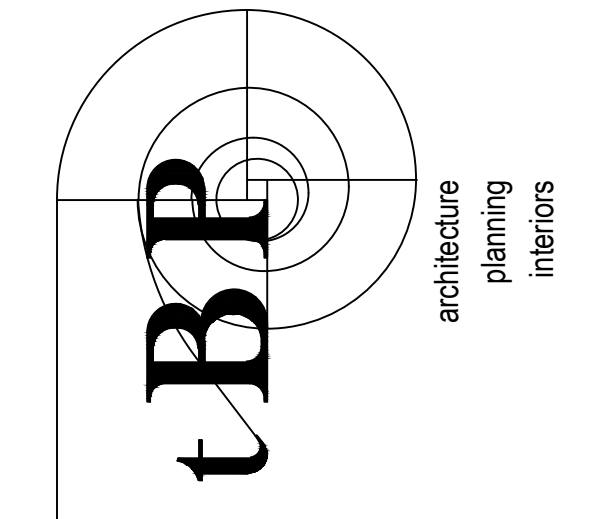
DEMOLITION PERFORMANCE NOTES

1. ALL EXISTING ELECTRICAL WITHIN THE DEMOLITION AREAS OF THE BUILDING SHALL REMAIN UNLESS SPECIFICALLY INDICATED OTHERWISE ON THE ELECTRICAL DRAWINGS. REFER TO ARCHITECTURAL WALL DEMOLITION DRAWINGS INCLUDED IN THIS SET FOR DEMOLITION AREAS AND EXISTING WALLS. THE SCOPE OF THE DEMOLITION WORK SHALL INCLUDE ALL LABOR, MATERIALS, SERVICES AND EQUIPMENT REQUIRED FOR THE REMOVAL OF ALL EXISTING ELECTRICAL NOT INDICATED AS BEING REUSED. THIS WORK INCLUDES, BUT IS NOT LIMITED TO, THE FOLLOWING:
 - a. ALL EXISTING WIRE SHALL BE REMOVED FROM CONDUIT.
 - b. ALL EXISTING CONDUIT, THAT INTERFERES WITH ANY NEW CONSTRUCTION SHALL BE CUT BACK AS REQUIRED TO CLEAR NEW CONSTRUCTION.
 - c. REMOVE ALL EXISTING EXPOSED CONDUIT, SURFACE RACEWAYS AND CONDUIT CONCEALED IN EXISTING CONSTRUCTION THAT IS TO BE REMOVED. RECONNECT OUTLETS AND LIGHTING FIXTURES WHICH ARE NOW FED THROUGH THE OUTLETS TO BE REMOVED.
 - d. EXCEPT WHERE EXPOSED CONDUITS ARE SHOWN ON PLANS, INSTALL ALL NEW CONDUITS CONCEALED IN WALLS, FURRED CEILING, OR UNDER FLOOR SPACE.
 - e. LIGHT FIXTURES AND ELECTRICAL DEVICES INDICATED TO BE REMOVED AND REINSTALLED SHALL BE REMOVED AND PROPERLY STORED TO PROTECT FROM DAMAGE UNTIL SUCH TIME THAT IT IS REINSTALLED. ALL FIXTURES TO BE REINSTALLED SHALL BE FULLY OPERABLE AND SHALL FIRST BE CLEANED, RELAMPED, DEFECTIVE BALLASTS REPLACED AND CRACKED OR BROKEN DIFFUSERS/LENSES REPLACED.
 - f. ALL REMOVED MATERIALS AND EQUIPMENT WHICH IN THE OPINION OF THE OWNER ARE SALVAGEABLE, SHALL REMAIN THE PROPERTY OF THE OWNER.
- g. DO NOT REUSE SALVAGED MATERIALS AND EQUIPMENT, UNLESS SPECIFICALLY INDICATED ON PLANS OR SPECIFIED. REMOVE FROM PREMISES AND DISPOSE OF ALL MATERIALS CONSIDERED BY THE OWNER TO BE SCRAP.
- h. ALL FIRE ALARM EQUIPMENT IS TO REMAIN. PROTECT IN PLACE.

DEMOLITION PLAN NOTES

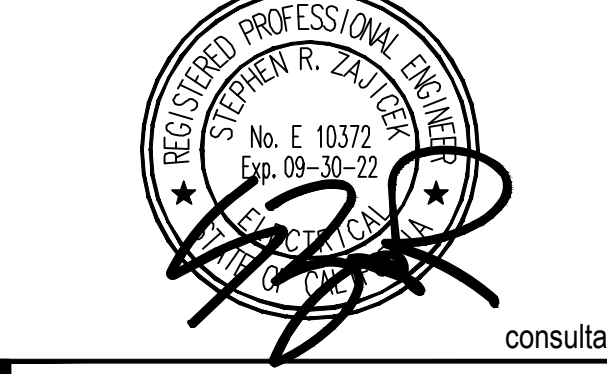
- 1 DISCONNECT AND REMOVE EXISTING EXIT SIGN AND STORE IN SAFE PLACE TO BE CLEANED AND RE INSTALLED IN THE RENOVATION PHASE OF THE PROJECT. PROTECT, MARK AND SAFE OFF EXISTING CONDUCTORS, IN J BOX ABOVE CEILING BEING DEMOLISHED, FOR CONNECTION TO RE INSTALLED EXIT SIGN.
- 2 DISCONNECT AND REMOVE EXISTING DOWN LIGHT FIXTURE AND STORE IN SAFE PLACE TO BE CLEANED AND RE INSTALLED IN THE RENOVATION PHASE OF THE PROJECT. PROTECT, MARK AND SAFE OFF EXISTING CONDUCTORS UP TO ABOVE ACCESSIBLE CEILING BEING DEMOLISHED FOR CONNECTION TO RE INSTALLED DOWN LIGHT FIXTURE.
- 3 DISCONNECT AND REMOVE EXISTING WALL MOUNTED LIGHT SWITCH. REMOVE EXISTING CONDUIT AND CONDUCTORS UP TO ABOVE ACCESSIBLE CEILING SPACE. PROVIDE J BOX FOR EXTENDING CONDUCTORS TO NEW LOCATION INDICATED IN THE RENOVATION PHASE OF THE PROJECT.
- 4 DISCONNECT AND REMOVE EXISTING PUSH BUTTON FOR DOOR RELEASE AND STORE IN SAFE PLACE TO BE RE INSTALLED IN THE RENOVATION PHASE OF THE PROJECT. REMOVE AND COIL EXISTING CABLING UP TO ABOVE CEILING SPACE FOR EXTENSION TO THE NEW LOCATION INDICATED IN RENOVATION PHASE OF PROJECT.
- 5 DISCONNECT AND REMOVE EXISTING CCTV MONITOR AND STORE IN SAFE PLACE TO BE RE INSTALLED IN THE RENOVATION PHASE OF THE PROJECT. REMOVE AND COIL EXISTING CABLING UP TO ABOVE CEILING SPACE FOR EXTENSION TO THE NEW LOCATION INDICATED IN RENOVATION PHASE OF PROJECT.
- 6 DISCONNECT AND REMOVE EXISTING CCTV CAMERA AND STORE IN SAFE PLACE TO BE CLEANED AND RE INSTALLED IN THE RENOVATION PHASE OF THE PROJECT. PROTECT, MARK AND SAFE OFF EXISTING CONDUCTORS IN J BOX ABOVE CEILING BEING DEMOLISHED FOR CONNECTION TO RE INSTALLED CCTV CAMERA.

AS 03 - 188888
 DIVISION OF THE STATE ARCHITECT
 355 S. GRAND AVE., SUITE 2100
 LOS ANGELES, CA 90011
 ph: 213.897.3995 fx: 213.897.3159/0726
 agency



tBP Architecture
 4611 Teller Avenue
 Newport Beach, CA 92660
 ph: 949.873.0300
 architect

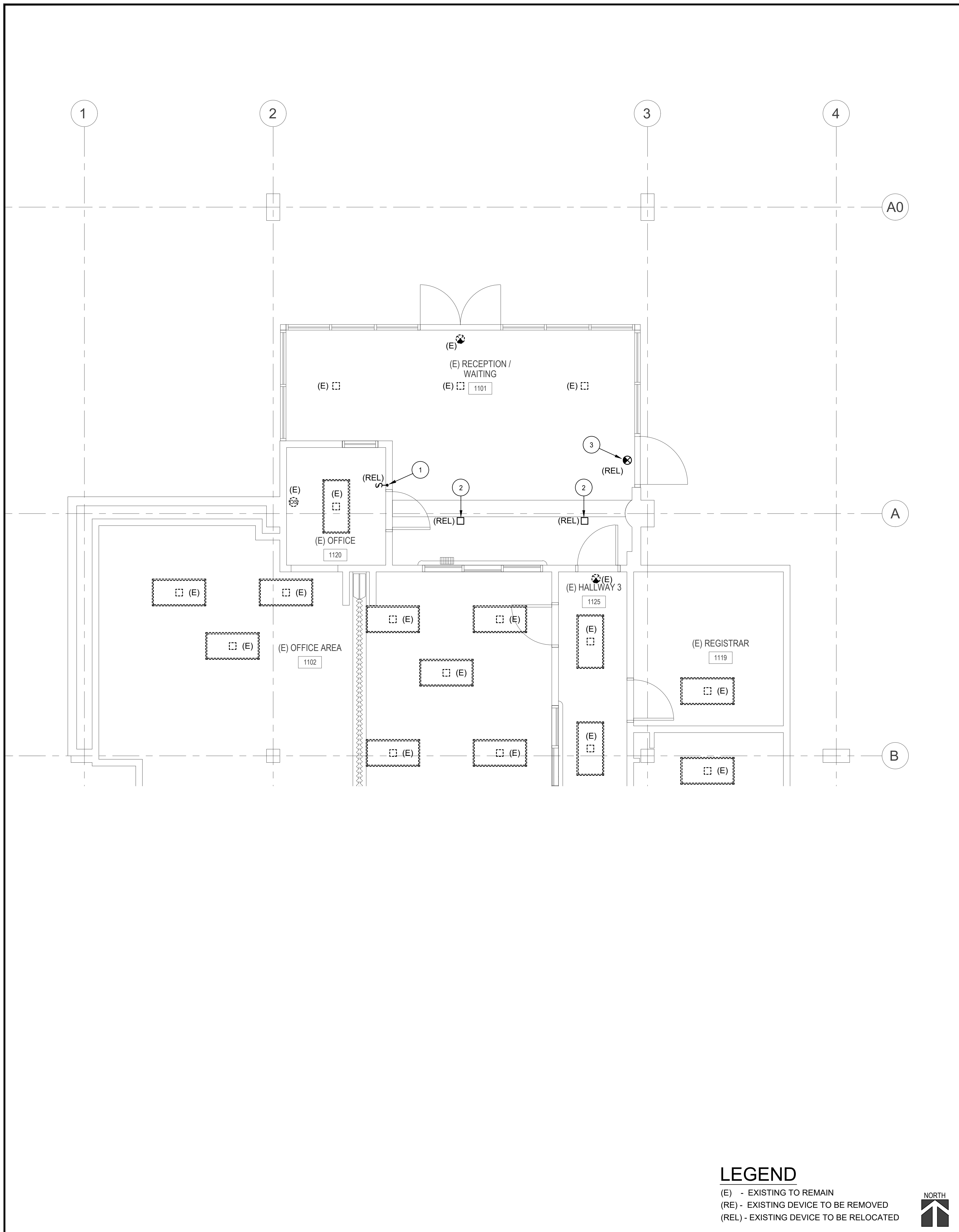
FBA Engineering
 Consulting Electrical Engineers
 150 Palmdale Avenue Suite A120
 Costa Mesa, CA 92626
 949.852.8995 • 949.852.1657 (fax)
 fbaeng.com
 FBA Job Number: 212.279



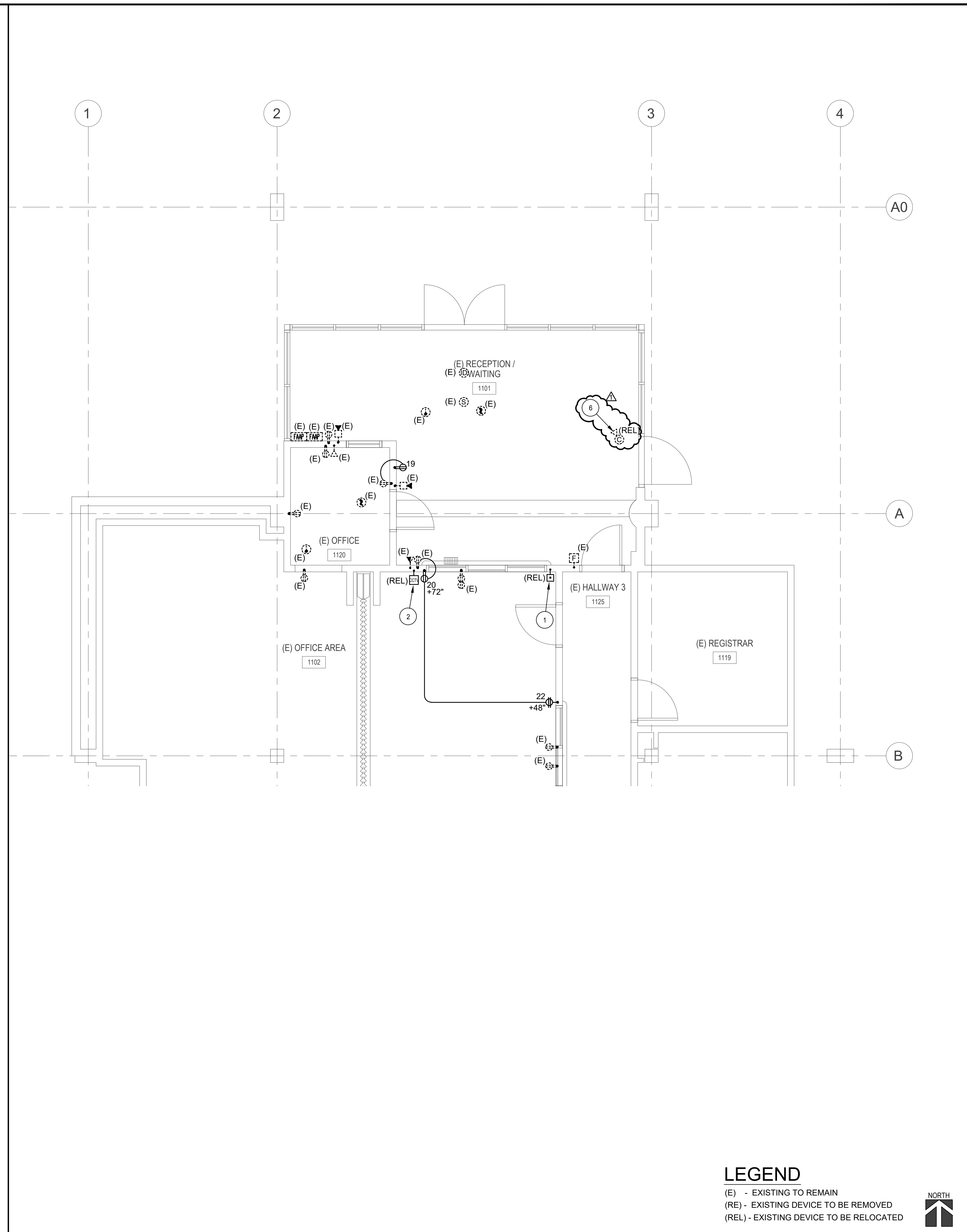
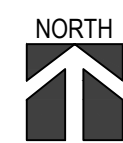
**GLENDALE HIGH SCHOOL
 ADMIN. ENTRY REMODEL**
 GLENDALE UNIFIED SCHOOL DISTRICT
 1440 EAST BROADWAY
 GLENDALE, CALIFORNIA 91205
 owner

tBP project number : 21059.00
 file name:
 drawn by: FBA checked by: FBA
 date: 2/23/2021
 Rev: date: description:
 3/21/2022_ADDENDUM 1

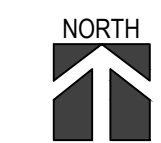
THE DRAWING AND THE DESIGN, SPECIFICATIONS, IDEAS AND OTHER INFORMATION CONTAINED HEREIN CONSTITUTE UNPUBLISHED WORK OF ARCHITECTURE AND SHALL REMAIN THE PROPERTY OF tBP ARCHITECTURE IN PERPETUITY. NO PART THEREOF SHALL BE REPRODUCED, DISCLOSED, DISTRIBUTED, SOLD, RENTED OR OTHERWISE USED IN ANY MANNER WITHOUT THE ADVANCED EXPRESS WRITTEN CONSENT OF tBP ARCHITECTURE.
 drawing title:
**ENLARGED ELECTRICAL
 DEMOLITION PLAN**
 drawing no.:
E-2.0
 drawing of #



LEGEND
 (E) - EXISTING TO REMAIN
 (RE) - EXISTING DEVICE TO BE REMOVED
 (REL) - EXISTING DEVICE TO BE RELOCATED



LEGEND
 (E) - EXISTING TO REMAIN
 (RE) - EXISTING DEVICE TO BE REMOVED
 (REL) - EXISTING DEVICE TO BE RELOCATED



RENOVATION LIGHTING PLAN		SCALE: 1/4" = 1'-0" 1
LIGHTING PERFORMANCE NOTES	LIGHTING PLAN NOTES	
<ol style="list-style-type: none"> ALL BRANCH CIRCUIT WIRING SHALL BE IN A MINIMUM 3/4" CONDUIT, UNLESS IT IS A SINGLE WHIP TO TERMINATE AT LIGHT FIXTURE. THEN CONDUIT SIZE CAN BE REDUCED TO 1/2" IN SIZE. PROVIDE GROUND WIRE IN ALL LIGHTING BRANCH CIRCUIT CONDUITS. 	<ol style="list-style-type: none"> PROVIDE AND INSTALL NEW LIGHT SWITCH TO MATCH EXISTING THAT WAS REMOVED IN DEMOLITION PHASE. INTERCEPT AND EXTEND EXISTING CIRCUITRY AND CONTROL FROM REMOVED SWITCH TO NEW LOCATION INDICATED. PROVIDE DEVICE, BOXES, CONDUIT, CABLING ETC FOR A COMPLETE AND OPERABLE SYSTEM. CLEAN AND RE-LAMP FIXTURE. REPLACE ANY DAMAGED LENSES, MOUNTING HARDWARE, ETC.. CONTRACTOR TO SECURE FIXTURE IN NEW LOCATION TO THE NEW ROOF JOISTS IN ACCORDANCE WITH MANUFACTURER'S REQUIREMENTS. REFER TO DETAILS 1/A-4 AND 2/A-4 FOR ROOF JOIST. VERIFY EXACT LOCATION WITH ARCHITECT AND DISTRICT BEFORE ROUGH IN. INSTALL EXISTING DOWN LIGHT FIXTURE THAT WAS REMOVED IN DEMOLITION PHASE TO LOCATION INDICATED. INTERCEPT AND EXTEND EXISTING CABLING AND CONTROL TO NEW LOCATION. PROVIDE ALL BOXES, MOUNTING HARDWARE, CONDUIT, CABLING ETC FOR A COMPLETE AND OPERABLE SYSTEM. PROVIDE NEW DUPLEX RECEPTACLE BEHIND MONITOR AS INDICATED. REFER TO DETAIL 11/A-4 FOR BACKING DETAIL FOR THE MOUNTING OF THE MONITOR, BY OTHERS. VERIFY EXACT LOCATION WITH ARCHITECT AND DISTRICT PRIOR TO ROUGH IN. INSTALL EXISTING EXIT SIGN FIXTURE THAT WAS REMOVED IN DEMOLITION PHASE TO LOCATION INDICATED. INTERCEPT AND EXTEND EXISTING CABLING AND TO NEW LOCATION. PROVIDE ALL BOXES, MOUNTING HARDWARE, CONDUIT, CABLING ETC FOR A COMPLETE AND OPERABLE SYSTEM. CLEAN FIXTURE AND REPLACE ANY BROKEN OR DAMAGED PARTS. VERIFY EXACT LOCATION WITH ARCHITECT AND DISTRICT BEFORE ROUGH IN. 	

RENOVATION POWER AND SIGNAL PLAN		SCALE: 1/4" = 1'-0" 2
TELECOM PERFORMANCE NOTES	POWER AND SIGNAL PLAN NOTES	
<ol style="list-style-type: none"> THE CONTRACTOR WILL BE HANDLING THE WAPs & TELEPHONES INCLUDING REMOVAL, PACKING, STORAGE, REINSTALLATION & PROGRAMMING TO THESE DEVICES. VERIFY EXACT LOCATION OF EQUIPMENT/TELECOMMUNICATION OUTLETS WITH ARCHITECT/SCHOOL DISTRICT REPRESENTATIVE PRIOR TO ROUGH-IN. EXISTING TELEPHONE BOXES, CONDUIT PATHWAY AND CABLING SHALL BE PROTECTED IN PLACE FOR TELEPHONE TO BE REINSTALLED BY THE DISTRICT IN SAME LOCATION AFTER CONSTRUCTION IS COMPLETE AS REQUIRED. EXISTING DATA OUTLETS TO REMAIN. PROTECT IN PLACE, UNLESS NOTED OTHERWISE. 	<ol style="list-style-type: none"> INSTALL EXISTING PUSH BUTTON FOR DOOR RELEASE THAT WAS REMOVED IN DEMOLITION PHASE INTO LOCATION INDICATED. INTERCEPT AND EXTEND EXISTING CABLING TO NEW LOCATION. PROVIDE ALL BOXES, CONDUIT, WIRING ETC. FOR A COMPLETE AND OPERABLE SYSTEM. VERIFY EXACT LOCATION WITH ARCHITECT AND DISTRICT PRIOR TO ROUGH IN. INSTALL EXISTING CCTV MONITOR OUTLET BOX THAT WAS REMOVED IN DEMOLITION PHASE TO LOCATION INDICATED. INTERCEPT AND EXTEND EXISTING CABLING TO NEW LOCATION. PROVIDE ALL BOXES, MOUNTING HARDWARE, CONDUIT, CABLING ETC FOR A COMPLETE AND OPERABLE SYSTEM. PROVIDE NEW DUPLEX RECEPTACLE BEHIND MONITOR AS INDICATED. REFER TO DETAIL 11/A-4 FOR BACKING DETAIL FOR THE MOUNTING OF THE MONITOR, BY OTHERS. VERIFY EXACT LOCATION WITH ARCHITECT AND DISTRICT PRIOR TO ROUGH IN. INSTALL EXISTING CCTV CAMERA THAT WAS REMOVED IN DEMOLITION PHASE TO LOCATION INDICATED. INTERCEPT AND EXTEND EXISTING CABLING TO NEW LOCATION. PROVIDE ALL BOXES, MOUNTING HARDWARE, CONDUIT, CABLING ETC FOR A COMPLETE AND OPERABLE SYSTEM. VERIFY EXACT LOCATION WITH ARCHITECT AND DISTRICT PRIOR TO ROUGH IN. 	
POWER PERFORMANCE NOTES	<ol style="list-style-type: none"> PROVIDE GREEN GROUND WIRE IN ALL POWER CONDUITS. 	

AS 03 - 188888
 DIVISION OF THE STATE ARCHITECT
 355 S. GRAND AVE, SUITE 2100
 LOS ANGELES, CA 90011
 ph: 213.897.3995 fx: 213.897.3159/0726
 agency

tBP
 architecture
 planning
 interiors

tBP/Architecture
 4611 Teller Avenue
 Newport Beach, CA 92660
 ph: 949.873.0300
 architect

FBA Engineering
 Consulting Electrical Engineers
 150 Palmdale Avenue Suite A120
 Costa Mesa, CA 92626
 949.852.9995 • 949.852.1657 (fax)
 fbaeng.com
 FBA Job Number: 212.279

REGISTERED PROFESSIONAL ENGINEER
 STEPHEN R. BAKER
 No. E. 10372
 Exp. 09-30-22
 consultant

owner

**GLENDALE HIGH SCHOOL
 ADMIN. ENTRY REMODEL**

GLENDALE UNIFIED SCHOOL DISTRICT
 1440 EAST BROADWAY
 GLENDALE, CALIFORNIA 91205

tBP project number : 21099.00

file name:
 drawn by: FBA checked by: FBA

date: 2/23/2021

Rev: date: description:
 3/21/2022_ADDENDUM 1

drawing title:
**ENLARGED RENOVATION
 ELECTRICAL PLANS**

drawing no.:
E-2.1
 drawing of #