



# Youth & Family Services Community Resource Guide



**Community Services  
& Parks**

## Services for Persons with Intellectual and Physical Disabilities

City of Glendale (Therapeutic Recreation)	(818) 548-3783 <a href="http://Glendaleca.gov">Glendaleca.gov</a>	820 E. Maple St, Glendale, CA 91205
Ability First	(818) 507-1969 <a href="http://abilityfirst.org">abilityfirst.org</a>	711 E. Maple St, Suite 114, Glendale, CA 91205
Ahead with Horses	(818) 767-6373 <a href="http://aheadwithhorsesla.org">aheadwithhorsesla.org</a>	10157 Johanna Ave, Shadow Hills, CA 91040
California Department of Rehabilitation	(818) 551-2141 <a href="http://dor.ca.gov">dor.ca.gov</a>	425 W Broadway #200, Glendale, CA 91204
Campbell Center	(818) 242-2434 6512 <a href="http://thecampbell.org">thecampbell.org</a>	San Fernando Rd, Glendale, CA 91201
Easter Seals	(818) 551-0128 <a href="http://easterseals.com">easterseals.com</a>	710 W. Broadway, Glendale, CA 91204
F.A.C.T.S.	(818) 241-7702 <a href="http://gusd.net">gusd.net</a>	440 W Lomita Avenue, Glendale, CA 91204
Goodwill	(323) 223-1211 <a href="http://goodwillsocal.org">goodwillsocal.org</a>	6343 San Fernando Road, Glendale, CA 91201
Hamilton House	(818) 502-9188 <a href="http://lanterman.ca.networkofcare.org">lanterman.ca.networkofcare.org</a>	739 W Glenoaks Blvd, Glendale, CA 91202
Modern Support Services	(818) 244-2677 <a href="http://modernsupportservices.org">modernsupportservices.org</a>	
Rights of People with Disabilities	<a href="http://lawhelpca.org">lawhelpca.org</a>	

## Domestic Violence and Rapid Rehousing

Family Promise of the Verdugos	(818) 847-1547 <a href="http://familypromiseverdugos.org">familypromiseverdugos.org</a>	P.O. Box 1307 Burbank, CA 91507
Rape, Abuse & Incest National Network (RAINN)	(800) 656-4673 <a href="http://rainn.org">rainn.org</a>	
YWCA of Glendale	(818) 242-4155 <a href="http://glendaleywca.org">glendaleywca.org</a>	735 E Lexington Dr, Glendale, CA 91206

## City of Glendale Departments

City Clerk	(818) 548-2090 <a href="http://Glendaleca.gov">Glendaleca.gov</a>	613 E Broadway, Suite 110, Glendale CA 91206
Community Development	(818) 548-3200 <a href="http://Glendaleca.gov">Glendaleca.gov</a>	633 E. Broadway Ave, Suite 101, Glendale, CA 91206
Community Services and Parks	(818) 548-2000 <a href="http://Glendaleca.gov">Glendaleca.gov</a>	613 E. Broadway, Suite 120, Glendale CA 91206
Glendale Fire	(818) 548-4800 <a href="http://Glendaleca.gov">Glendaleca.gov</a>	421 Oak St., Glendale CA 91204
Glendale Police	(818) 548-4840 <a href="http://Glendaleca.gov">Glendaleca.gov</a>	131 N Isabel St, Glendale, CA 91206
Glendale Water and Power	(818) 548-3300 <a href="http://Glendaleca.gov">Glendaleca.gov</a>	141 N. Glendale Ave, Glendale CA 91206
Human Resources	(818) 548-2110 <a href="http://Glendaleca.gov">Glendaleca.gov</a>	613 Broadway Suite 100, Glendale CA 91206
Library, Arts & Culture	(818) 548-2021 <a href="http://Glendaleca.gov">Glendaleca.gov</a>	222 East Harvard Street, Glendale, CA 91205

<b>Management Services</b>	(818) 548-4844 <b>Glendaleca.gov</b>	613 E. Broadway Suite 200, Glendale, CA 91206
<b>Public Works</b>	(818) 548-3900 <b>Glendaleca.gov</b>	633 E. Broadway Suite 209, Glendale, CA 91206

## Homeless Programs

<b>City of Glendale (Homeless Services)</b>	(818) 548-3720 <b>Glendaleca.gov</b>	613 E. Broadway, Suite 120, Glendale CA 91206
<b>Ascencia</b>	(818) 246-7900 <b>ascenciaca.org</b>	1851 Tyburn St. Glendale, CA 91204
<b>Catholic Charities</b>	(213) 318-5707 <b>catholiccharitiesla.org</b>	4322 San Fernando Rd. Glendale, CA 91204
<b>Door of Hope</b>	(626) 304-9130 <b>doorofhope.us</b>	669 N. Los Robles Ave. Pasadena, CA 91101
<b>Salvation Army</b>	(818) 246-5586 <b>glendale.salvationarmy.org</b>	320 W. Windsor Road, Glendale CA 91204
<b>YMCA of Glendale</b>	(818) 241-4130 <b>glendaleymca.org</b>	140 N Louise St, Glendale, CA 91206

## Hospitals/Medical/Dental

<b>Adventist Health Glendale Hospital</b>	(818) 409- 8202 <b>adventisthealth.org</b>	1509 Wilson Terrace, Glendale CA
<b>All for Health</b>	(818) 409-3020 <b>all4health.org</b>	519 E. Broadway, Glendale CA 91205
<b>Center for Disease Control</b>	(800) 232-4636 <b>cdc.gov</b>	
<b>Center for Health Care Rights</b>	(213) 383-4519 <b>cahealthadvocates.org</b>	520 S Lafayette Park Pl # 214, Los Angeles, CA 90057
<b>Children's Hospital of Los Angeles</b>	(323) 361-2112 <b>chla.org</b>	4650 Sunset Blvd, Los Angeles, CA 90027
<b>Comprehensive Community Health Centers</b>	(818) 265-2264 <b>cchccenters.org</b>	801 S. Chevy Chase Dr., Suite 20 Glendale, CA 91205
<b>Dignity Health Glendale Memorial Hospital</b>	(818) 502-1900 <b>services.dignityhealth.org</b>	1420 S. Central Ave, Glendale CA 91204
<b>First 5 LA</b>	(213) 482-5902 <b>first5la.org</b>	750 N. Alameda St, Los Angeles, CA 90012
<b>Glendale Community Free Health Clinic</b>	(818) 245-8109 <b>glendaleclinic.org</b>	134 N. Kenwood, Room 330, Glendale, CA 91206
<b>Health and Nutrition Hotline (DPSS)</b>	(877) 597-4777 <b>ccrcca.org</b>	
<b>Immunization Clinic</b>	(323) 660-3722 <b>yellowpages.com</b>	660 W Broadway, Glendale, CA 91204
<b>Kids Community Dental Clinic</b>	(818) 841-8010 <b>kidsclinic.org</b>	400 W Elmwood Ave, Burbank, CA 91506
<b>Medi-Cal for Families</b>	(800) 880-5305 <b>dhcs.ca.gov</b>	PO Box 7187, Pasadena, CA 91109
<b>Saban Free Health Clinic</b>	(323) 653-1990 <b>sabancommunityclinic.org</b>	8405 Beverly Blvd, Los Angeles, CA 90048
<b>USC Verdugo Hills Hospital</b>	(818) 790-7100 <b>uscvh.org</b>	1812 Verdugo Blvd, Glendale, CA 91208

## Housing & Utilities

City of Glendale (Housing)	(818) 548-3936 <b><i>Glendaleca.gov</i></b>	141 N. Glendale Ave, Suite 202, Glendale, CA 91206
Department of Housing and Urban Development (HUD)	(213) 894-8000 <b><i>hud.gov</i></b>	300 N. Los Angeles Street, Los Angeles, CA 90002
Glendale Tenants Union	(818) 630-9795 <b><i>glendaletenants.org</i></b>	glendaletenantsunion@gmail.com
Home Energy Assistance Program (HEAP)	(213) 353-3982 <b><i>pacela.org</i></b>	1055 Wilshire Blvd, Suite 1475, Los Angeles CA 90017
Housing Authority (City of Los Angeles)	(213) 252-2500 <b><i>hud.gov</i></b>	1515 E 105th St, Los Angeles, CA 90002
Housing Rights Center	(626) 791-0211 <b><i>housingrightscenter.org</i></b>	1020 N. Fair Oaks Ave, Pasadena, CA 91103
IHSS (In Home Supportive Services)	(888) 822-9622 <b><i>dpss.lacounty.gov</i></b>	2707 S Grand Ave, Los Angeles, CA 90007

## Legal Services

Armenian Bar Association	(323) 666-6288 <b><i>armenianbar.org</i></b>	
Bet Tzedek	(323) 939-0506 <b><i>bettzedek.org</i></b>	145 S. Fairfax Avenue, Suite 200, Los Angeles, CA 90036
LA Consumer Action Center	(213) 624-4631 <b><i>consumer-action.org</i></b>	523 W 6th St #1105, Los Angeles, CA 90014
Legal Aid Association of California	(510) 893-3000 <b><i>laaconline.org</i></b>	1550 W 8th St, Los Angeles, CA 90017
Legal Services	(818) 507.1933 <b><i>unitedhumanrights.org</i></b>	104 N. Belmont St. Suite 313, Glendale, CA 91206
Los Angeles County Superior Court	(213) 351-8739 <b><i>lacourt.org</i></b>	
Neighborhood Legal Services	(818) 291-1761 <b><i>nlsa.org</i></b>	1104 E. Chevy Chase Dr, Glendale, CA 91205
Nick of Time Project	(818) 861-7442 <b><i>nickoftimeproject.org</i></b>	1946 W. Glenoaks Blvd, Glendale CA 91201
International Rescue Committee	(818) 550-6220 <b><i>rescue.org</i></b>	625 N. Maryland Ave, Glendale, CA 91206

## LGBTQ Services

Gay and Lesbian Armenian Society	(310) 203-1587 <b><i>galasla.org</i></b>	8721 Santa Monica Blvd #654, West Hollywood, CA 90069
GLBT National Hotline	(888) 843-4564	
Los Angeles LGBT Center	(323) 993-7400 <b><i>lalgbtcenter.org</i></b>	1625 N. Schrader Blvd, Los Angeles, CA 90038



## Mental Health Services

<b>ARK Family Center</b>	(818) 662-7045 <a href="http://arkfamilycenter.org">arkfamilycenter.org</a>	135 S. Jackson St, Glendale, CA 91205
<b>Didi Hirsch</b>	(818) 244-7257 <a href="http://didihirsch.org">didihirsch.org</a>	1540 E. Colorado St, Glendale, CA 91205
<b>Foothill Family Mental Health</b>	(626) 993-3000 <a href="http://foothillfamily.org">foothillfamily.org</a>	897 Granit Drive, Pasadena, CA 91101
<b>Glendale Unified School District (Mental Wellness)</b>	(818) 241-3111 <a href="http://gusd.net">gusd.net</a>	223 N. Jackson St, Glendale, CA 91206
<b>Institute for Multicultural Counseling Services</b>	(818) 240-4311 <a href="http://imces.org">imces.org</a>	121 W. Lexington Dr #300, Glendale, CA 91203
<b>LA County Department of Mental Health Hotline</b>	(800) 854-7771	
<b>Mental Health Advocacy Services</b>	(213) 389-2077 <a href="http://mhas-la.org">mhas-la.org</a>	3255 Wilshire Blvd UNIT 902, Los Angeles, CA 90010
<b>NAMI</b>	(323) 478-1656 <a href="http://namiglendale.org">namiglendale.org</a>	1540 E Colorado St, Glendale, CA 91205
<b>National Suicide Prevention Lifeline</b>	(800) 273-8255	
<b>Pacific Clinics</b>	(818) 547-9544 <a href="http://pacificclinics.org">pacificclinics.org</a>	237 N. Central Ave, Glendale CA 91203

## Nutrition

<b>City of Glendale (Elderly Nutrition Program)</b>	(818) 548-3775 <a href="http://Glendaleca.gov/parks">Glendaleca.gov/parks</a>	201 E. Colorado St. Glendale, CA 91205
<b>Cal Fresh</b>	(877) 847-3663 <a href="http://getcalfresh.org">getcalfresh.org</a>	744 P Street, Sacramento, CA 95814
<b>Grace Resource Center (Groceries and Hot Meals)</b>	(661) 940-5272 <a href="http://graceresources.org">graceresources.org</a>	45134 Sierra Hwy, Lancaster, CA 93534
<b>Healing Urban Barrios Food Pantry</b>	(323) 504-6070	
<b>Houses of Light Church Corporation</b>	(818) 998-2931 <a href="http://housesoflight.org/">housesoflight.org/</a>	19408 Londelius St, Northridge, CA 91324
<b>Los Angeles Regional Food Bank</b>	(323) 234-3030 <a href="http://lafoodbank.org">lafoodbank.org</a>	1734 E. 41st St, Los Angeles, CA 90058
<b>Pasadena Meals On Wheels</b>	(626) 449-6815 <a href="http://pasadenamealsonwheels.org">pasadenamealsonwheels.org</a>	500 E. Colorado, Pasadena CA 91101
<b>Project Angel Food</b>	(323) 845-1800 <a href="http://angelfood.org">angelfood.org</a>	922 Vine St. Los Angeles CA 90038
<b>Salvation Army Food Pantry</b>	(818) 246-5586 <a href="http://glendale.salvationarmy.org">glendale.salvationarmy.org</a>	320 W Windsor Road, Glendale, CA 91204
<b>Shekinah Worship Center (Free Groceries)</b>	(661) 940-8378	42640 10th St W, Lancaster, CA 93534
<b>SOVA (Community Food and Resource Program)</b>	(818) 988-7682 <a href="http://jfsla.org">jfsla.org</a>	16439 Vanowen St. Van Nuys, CA 91406
<b>WIC Office (Women, Infants and Children)</b>	(818) 361-7541 <a href="http://fns.usda.gov/wic">fns.usda.gov/wic</a>	801 S. Chevy Chase Dr. #801, Glendale, CA 91205

## Parenting/Women's/Child Services

<b>Avenues Pregnancy Clinic</b>	(323) 913-1975 <b><i>avenuespc.org</i></b>	1911 W Glenoaks Blvd, Glendale, CA 91201
<b>Child Care Resource Center</b>	(818) 717-1000 <b><i>ccrcca.org</i></b>	20001 Prairie Street, Chatsworth, CA 91311
<b>March of Dimes</b>	(818) 539-2195 <b><i>marchofdimes.org</i></b>	700 N. Brand Blvd., Suite 950. Glendale, CA 91203
<b>Soroptimist of Glendale</b>	<b><i>soroptimistglendale.com</i></b>	PO Box 826 Glendale, CA 91209
<b>FPA Women's Health</b>	(818) 502-1341 <b><i>fpawomenshealth.com</i></b>	372 W. Arden Avenue Suite 200, Glendale, CA 91203

## Senior Services

<b>City of Glendale (Adult Recreation Center)</b>	(818) 548-3775 <b><i>Glendaleca.gov/parks</i></b>	201 E. Colorado Street, Glendale, CA 91205
<b>City of Glendale (Sparr Heights Community Center)</b>	(818) 548-2187 <b><i>Glendaleca.gov/parks</i></b>	1613 Glencoe Way, Glendale, CA 91208
<b>A1 Home Care</b>	(562) 929-8400 <b><i>a-1homecare.com</i></b>	690 East Green Street, Suite 204, Pasadena, CA 91101
<b>Adult Protective Services</b>	(213) 351-5401	3333 Wilshire Blvd, Los Angeles, CA 90010
<b>Alternatives for Seniors</b>	(888) 932-7747 <b><i>alternativesforseniors.com</i></b>	
<b>Alzheimer's Association</b>	(800) 272-3900 <b><i>alz.org/socal</i></b>	9606 S. Santa Monica Blvd #200, Beverly Hills, CA 90210
<b>American Association of Retired Persons (AARP)</b>	(866) 448-3614 <b><i>states.aarp.org</i></b>	200 S. Los Robles Ave #400, Pasadena, CA 91101
<b>Autumn Hills Health Care</b>	(818) 246-5677	430 N. Glendale Ave, Glendale, CA 91206
<b>Broadview Residential Care</b>	(818) 246-4951 <b><i>broadviewresidential.com</i></b>	535 W. Broadway #1131, Glendale, CA 91204
<b>Elder Abuse Hotline</b>	(877) 477-3646 <b><i>da.lacounty.gov</i></b>	
<b>Emerald City Assisted Living</b>	(818) 241-2273	205 E. Los Feliz Rd, Glendale, CA 91205
<b>Glenoaks Convalescent Hospital</b>	(818) 240-4300 <b><i>nursinghomes.com</i></b>	409 W. Glenoaks Blvd, Glendale, CA 91202
<b>Glen-Park Assisted Living</b>	(800) 495-5005 <b><i>glenparkhealthyliving.com</i></b>	1220 Mariposa St, Glendale, CA 91205
<b>Home Care Assistance</b>	(626) 250-0558 <b><i>homecareassistance.com</i></b>	
<b>Home Instead</b>	(818) 381-4740 <b><i>homeinsteadofburbank.com</i></b>	
<b>Joslyn Senior Center</b>	(818) 238-5353 <b><i>burbankca.gov</i></b>	1301 W. Olive Ave, Burbank, CA 91506
<b>LA4Seniors</b>	<b><i>la4seniors.com</i></b>	
<b>Leisure Vale Retirement Home</b>	(818) 244-2323 <b><i>leisurevale.com</i></b>	413 E. Cypress St, Glendale, CA 91205
<b>Parkview of Glendale</b>	(818) 246-7457 <b><i>parkviewofglendale.com</i></b>	426 Piedmont Ave, Glendale, CA 91206

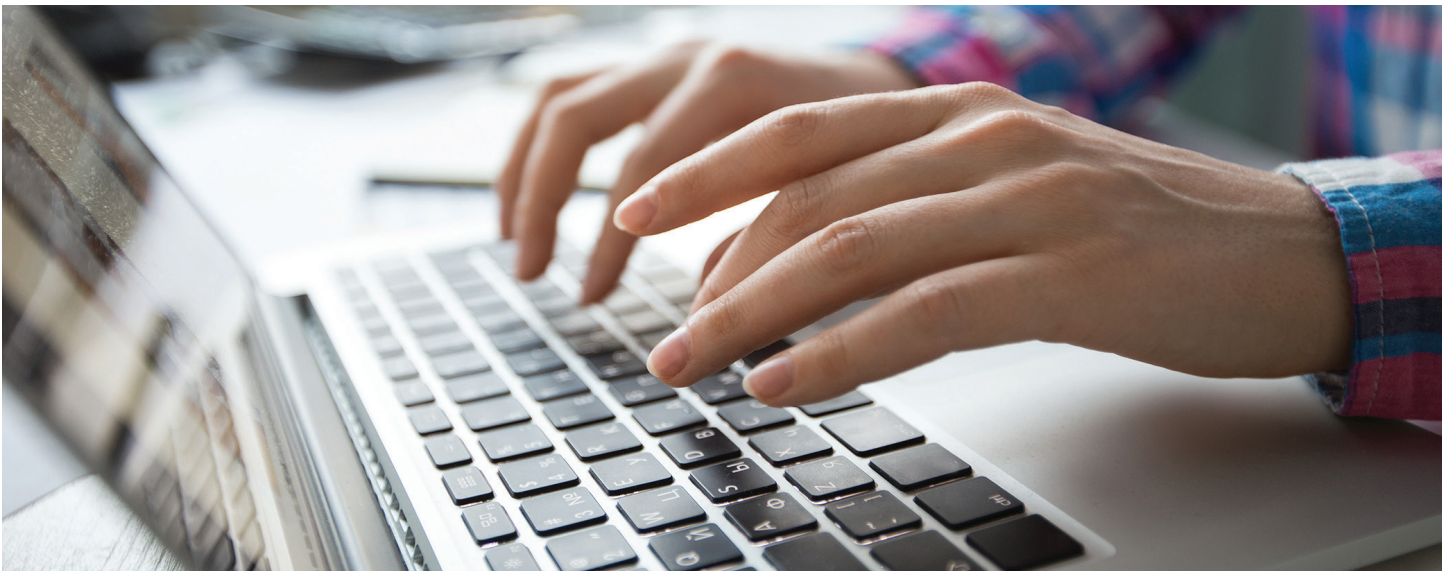
<b>Seniors Helping Seniors</b>	(626) 337-6606 <b>seniorshelpingseniors.com</b>	
<b>Social Security Administration</b>	(800) 772-1213 <b>ssa.gov</b>	225 W. Broadway #600, Glendale, CA 91204
<b>Windsor Senior Living Community</b>	(747) 800-4941 <b>humangood.org</b>	1230 E. Windsor Rd, Glendale, CA 91205

## Transportation

<b>Access</b>	(800) 883-1295 <b>accessla.org</b>	3449 Santa Anita Ave, El Monte CA 91731
<b>Amtrak</b>	(800) 872-7245 <b>amtrak.com</b>	400 W. Cerritos Ave, Glendale, CA 91204
<b>California Department of Motor Vehicles</b>	(800) 777-0133 <b>dmv.ca.gov</b>	1335 W. Glenoaks Blvd., Glendale, CA 91201
<b>Dial-A-Ride</b>	(818) 548-3960 <b>Glendaleca.gov</b>	633 E. Broadway, Room 300, Glendale, CA 91206
<b>Glendale Beeline</b>	(818) 548-3960 <b>Glendaleca.gov</b>	613, E. Broadway, Glendale, CA 91206
<b>Greyhound</b>	(213) 629-8401 <b>greyhound.com</b>	1716 E. 7th St, Los Angeles, CA 90021
<b>Metrolink</b>	(800) 872-7245 <b>metrolinktrains.com</b>	400 W. Cerritos Ave, Glendale, CA 91204
<b>TAP (Transit Access Pass)</b>	(866) 827-8646 <b>taptogo.net</b>	

## Veteran's Resources

<b>LA County Bar Association</b>	(213) 896-6564 <b>lacba.org</b>	1055 W. 7th St #2700, Los Angeles, CA 90017
<b>Military Women in Need (Homeless Prevention)</b>	(310) 733-2450 <b>foundationforwomenwarriors.org</b>	5062 Lankershim Blvd, #3013, North Hollywood, CA 91601
<b>US Veterans Inc. (Housing, Employment &amp; Training)</b>	(213) 542-2604 <b>usvetsinc.org</b>	800 W. 6th St, Los Angeles, CA 90017
<b>Wellness Works</b>	(818) 247-2062 <b>wellnessworks4veterans.org</b>	540 W. Broadway, Glendale, CA 91204



## Youth & Family Services Support

City of Glendale (Youth & Family Services)	(818) 937-7247 <b>Glendaleca.gov</b>	501 S. Pacific Glendale, CA 91204
Action Teen/Parent Support Group	(800) 367-8336 <b>actiondrugrehab.com</b>	220 N. Kenwood St, Room 104, Glendale CA 91206
Armenian Relief Society	(818) 241-7533 <b>arswestusa.org</b>	517 W Glenoaks Blvd, Glendale, CA 91202
Armenian Youth Association of California	(818) 552-2922 <b>ayacalifornia.org</b>	1811 S. Glendale Ave. Glendale, CA 91205
American Red Cross	(818) 243-3121 <b>Redcross.org</b>	1501 S. Brand Blvd, Glendale, CA 91204
Assistance League of Glendale	(818) 246-2294 <b>alglendale.org</b>	314 E. Harvard St, Glendale, CA 91205
Committee for Armenian Students in Public Schools	(310) 471-8209 <b>casps.org</b>	6252 Honolulu Ave, Glendale, CA 91214
Covenant House (Youth Homeless Shelter)	(323) 461-3131 <b>covenanthousecalifornia.org</b>	1325 N. Western Ave, Los Angeles, CA 90027
D.A.R.E. (Drug Abuse Resistance Education)	(310) 215-0575 <b>dare.org</b>	9800 La Cienega Blvd, #401, Inglewood, CA 90301
Friday Night Live Initiative	(800) 782-4264 <b>wp.sbcounty.gov</b>	351 N. Mountain View Ave, San Bernardino CA 92415
GenNext AGBU After School Program	(626) 794-7942 <b>agbuwesterndistrict.org</b>	Glendale YWCA, 735 E. Lexington Drive, Glendale, CA 91206
Girls on the Run of LA County	(323) 221-0265 <b>gotrla.org</b>	556 S. Fair Oaks Ave, #101, Pasadena, CA 91105
Glendale Community College	(818) 240-1000 <b>glendale.edu</b>	1500 N. Verdugo Rd, Glendale, CA 91208
Glendale Education Foundation	(818) 247-0466 <b>glened.org</b>	223 N. Jackson St, Glendale, CA 91205
Glendale Historical Society	info@glendalehistorical.org <b>glendalehistorical.org</b>	PO Box 4173, Glendale, CA 91202
Glendale Parks & Open Space Foundation	(818) 548-2000 <b>glendaleparksfoundation.org</b>	613 East Broadway, Room 120
Glendale Youth Alliance (GYA)	(818) 937-8056 <b>Glendaleca.gov</b>	1255 S. Central Ave. Glendale CA 91204
GUSD Student Wellness Office	(818) 241-3111 <b>Gusd.net</b>	223 N. Jackson St, Glendale, CA 91206-
Homenetmen Western US Region	(323) 344-4300 <b>homenetmen.net</b>	2324 Colorado Blvd., Los Angeles, CA 90041
Elks Lodge	(818) 242.2105 <b>elks.org</b>	120 E. Colorado Blvd., Glendale, CA 91205
Kiwanis Glendale	(818) 957-7765 <b>glendalekiwanis.info</b>	120 E Colorado St, Glendale, CA 91205
New Directions for Youth	(818) 375-1000 <b>ndfy.org</b>	7315 Lankershim Blvd, North Hollywood, CA 91605
Optimist Youth Homes	(323) 444-3175 <b>oyhfs.org</b>	6957 N. Figueroa St, Los Angeles, CA 90041
Our House Grief Support	(310) 473-1511 <b>ourhouse-grief.org</b>	1663 Sawtelle Blvd #300, Los Angeles, CA 90025
Rotary Club of Glendale Sunrise	(213) 342-6332 <b>glendalesunriserotary.org</b>	109 E. Harvard St, Glendale, CA 91205
SafetyNet Wireless	(888) 224-3213 <b>safetynetwireless.com</b>	
Salvation Army The Zone	(818) 246-5586 <b>glendale-ca.salvationarmy.org</b>	320 W. Windsor Rd, Glendale, CA 91204
Students Training As Role Models (STAR)	(818) 937-7247 <b>Glendaleca.gov</b>	501 S. Pacific, Glendale, CA 91204
YMCA of the Foothills (Youth Drug and Alcohol Pre)	(818) 790-0123 <b>ymcafoothills.org</b>	1930 Foothill Blvd, La Cañada Flintridge, CA 91011