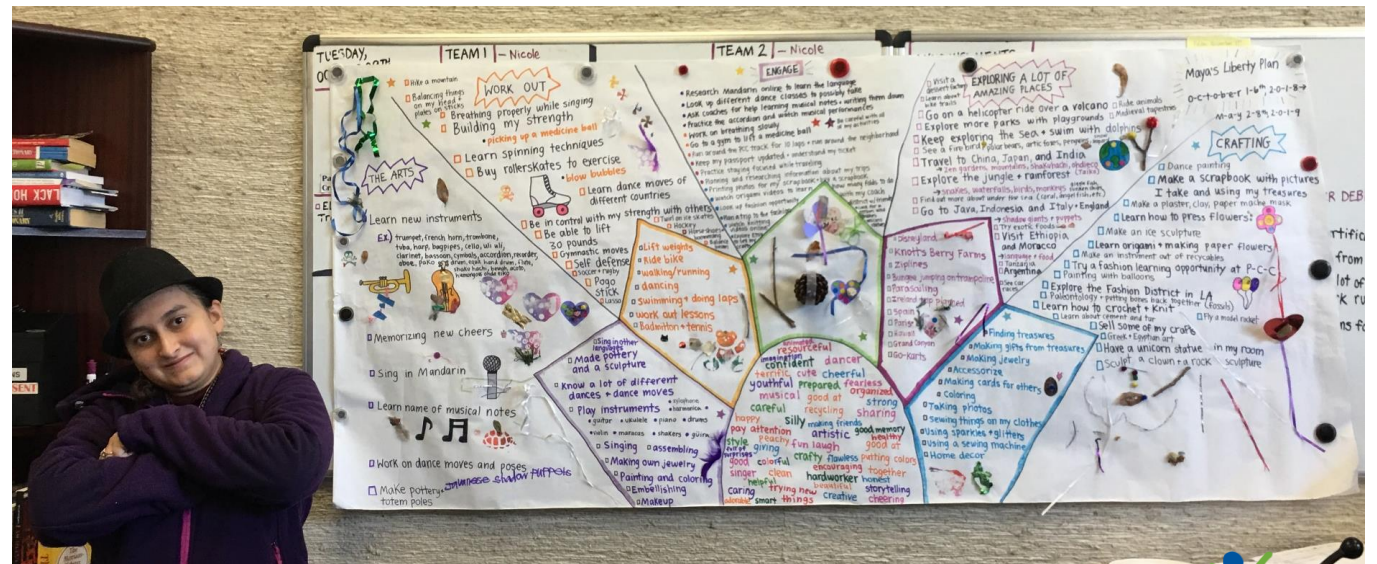




College to Career

What is College to Career?

College to Career provides support to young adults with developmental disabilities who demonstrate the *desire* and *potential* to succeed in a postsecondary educational setting in order to achieve their educational goals and future career.



College to Career Video



<https://www.youtube.com/watch?v=WWQuRDpxJRY>

Why College to Career?

- Provides academic support in the postsecondary and emphasizes:
 - Independence
 - Personal decisions/autonomy
 - The use of community resources
 - Self-discovery
 - Community exploration
- Transition to employment, internships, or volunteering after completing the educational phase.
- Program is Mon – Fri, 6 hours/day (*with flexible scheduling during remote/online learning*).
- Educational Coaches support 2 students a day.
- Programming provided online at multiple schools and in person in Glendale/Pasadena/LACC

How can College to Career Support?

An Educational Coach will...

Guide student with questions

Support *in* the classroom by clarifying questions

Support the student *outside* the classroom with understanding assignments

Support student with developing skills and capacity

Take notes for themselves to best support the student after class

Support the student with reminders

Provide information that will support students' decision making

Inform student of resources such as tutoring, academic advising and other supports

Encourage communication with their circle of support (i.e., family, tutor, counselor, professors)

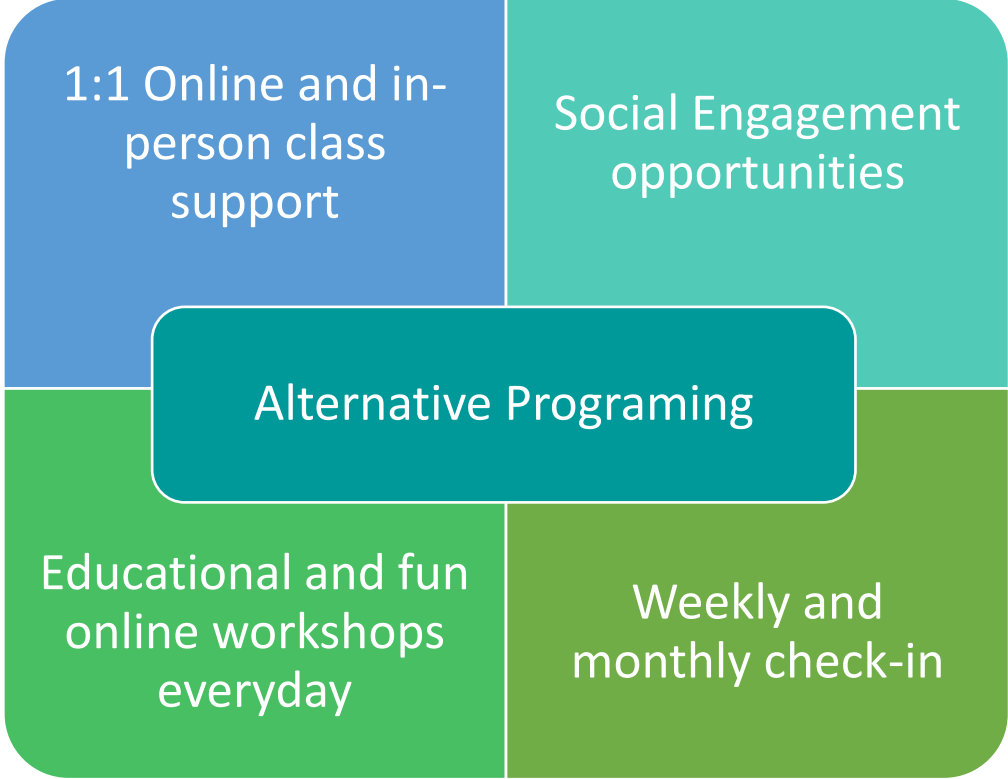
Serve as an ally and partner

Encourage autonomy and independence



Remote Programing

Art Activities



Dance



Sample schedule of student taking two college classes



Monday	Tuesday	Wednesday	Thursday	Friday
Check-in with Educational Coach 9am – 10am	Check-in with Educational Coach 10am – 11pm	Check-in with Educational Coach 9am – 10am	Check-in with Educational Coach 10am – 11pm	Check-in with Educational Coach 9am – 10am
College Counseling Class 10am – 11am Online on Zoom *Coach attends class with student	Yoga Class – Online 11am – 12pm	College Counseling Class 10am – 11am Online on Zoom *Coach attends class with student	Yoga Class – Online 11am – 12pm	Work on/Review HW with Coach 10am – 12pm
Debrief on course material with Educational Coach 11am – 12pm	Lunch 12pm – 1pm	Debrief on course material with Educational Coach 11am – 12pm	Lunch 12pm – 1pm	Lunch 12pm – 1pm
Lunch 12pm – 1pm	Independent Living Skills 1pm – 2pm	Lunch 12pm – 1pm	Independent Living Skills 1pm – 2pm	Independent Living Skills 1pm – 2pm
Work on homework with Coach 1pm – 2pm	College to Career Study Group 1pm – 2pm	Work on homework with Coach 1pm – 2pm	College to Career Study Group 1pm – 2pm	Fun based workshop hosted by College to Career 2pm – 2:45pm
Fun based workshop hosted by College to Career 2pm – 2:45pm	Review HW and Debrief/review the day with Educational Coach 2:00pm – 2:30pm	Fun based workshop hosted by College to Career 2pm – 2:45pm	Review HW and Debrief/review the day with Educational Coach 2:00pm – 2:30pm	Debrief/review the day with Educational Coach 2:45pm – 3pm
Debrief/review the day with Educational Coach 2:45pm – 3pm		Debrief/review the day with Educational Coach 2:45pm – 3pm		

Interested in applying?

- Contact your Regional Center's Service Coordinator to inform them of your interest in our program(s).
- Your Service Coordinator will send us your (your loved one's) referral packet.
- Once reviewed by our team, we will arrange a meeting with you and your team to discuss goals, expectations, and plan.
- College to Career offers two main enrollment periods
 - Summer to begin supports for Fall Semester
 - Winter to begin supports for Spring Semester
- Upcoming Enrollment dates:
 - Fall 2022 – Program Begins July 18, 2022
 - Spring 2023 – Program Begins January 16, 2023
- Current College Students may be eligible to begin receiving services mid-semester

College to Career is ideal for adults who....

Completed high school

Motivated to learn

Willing to be coached

Willing to receive feedback

Open to trying new things

Have an educational goal

Able to navigate a campus independently without supervision*

Able to remain safe on campus and community without supervision*

Colleges where services are provided

- Glendale Community College
- Pasadena City College
- Los Angeles City College
- CSU Channel Islands
- The School of Visual Arts, NY
- UCLA
- Fullerton College



College to Career Contact

**Araceli Conejo—Education Navigator,
Supervisor**

Habla Español

Phone: 323-636-4654

Email: aconejo@abilityfirst.org