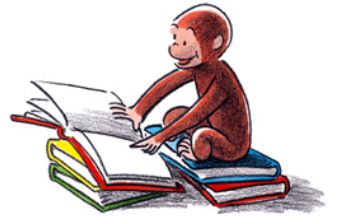


Weekly Extended Learning Opportunity

- * Students can be read to, can listen to story of the week or can read the books themselves. It is encouraged that they read the same book for the whole week.
- * Students might need parent support and can do the written work orally with parents, please note that on the work.
- * Please complete monthly family project.
- * Please complete monthly reading log.
- * Please complete monthly choice board
- * High-Frequency word practice two times a night.



The following is the schedule in which to complete the extended learning opportunity.

Monday:

- Reading I-Ready 20 minutes
- Math I-Ready 20 minutes
- Read Fluency Passage
- Read (or listen to weekly story) for 15 minutes
can find worksheet on site

Tuesday:

- Choice Board
- Beyond the Basic Facts – 15 minutes
- Read (or listen to weekly story) for 15 minutes
can find worksheet on site

Wednesday:

- Reading I-Ready 20 minutes
- Math I-Ready 20 Minutes
- Read (or listen to weekly story) for 15 minutes
can find worksheet on site

Thursday:

- Read Fluency Passage
- Math EnVision 20 Minutes
- Write 1 to 2 sentences in Discovery Journal about something you learned.
- Read (or listen to weekly story) for 15 minutes
can find worksheet on site

Friday:

- EnVisions Math Worksheet
- Beyond the Basic Facts – 15 minutes
- Write a letter to someone
can find worksheet on site
- Read (or listen to weekly story) for 15 minutes
can find worksheet on site

I-Ready:

Login Information:

Username: _____

Password: _____

EnVision:

Username: _____

Password: _____

Google Doc:

Username: _____

Password: _____

Beyond the Basic Facts:

Swun Math

www.swunmath.com

Go to Fact Practices at the top
Select Addition Mon., Wed., and
Fri.

Select Subtraction Tues. and
Thurs.

*If you have any questions please
feel free to message me ... 😊

**All worksheets and supports with
homework can be found on my page
on the John Marshall Website**

www.johnmarshallschool.com

<https://monkeymischiefclassroom.shutterfly.com/>