

# Pacific Battles of World War II

Ms. Krall



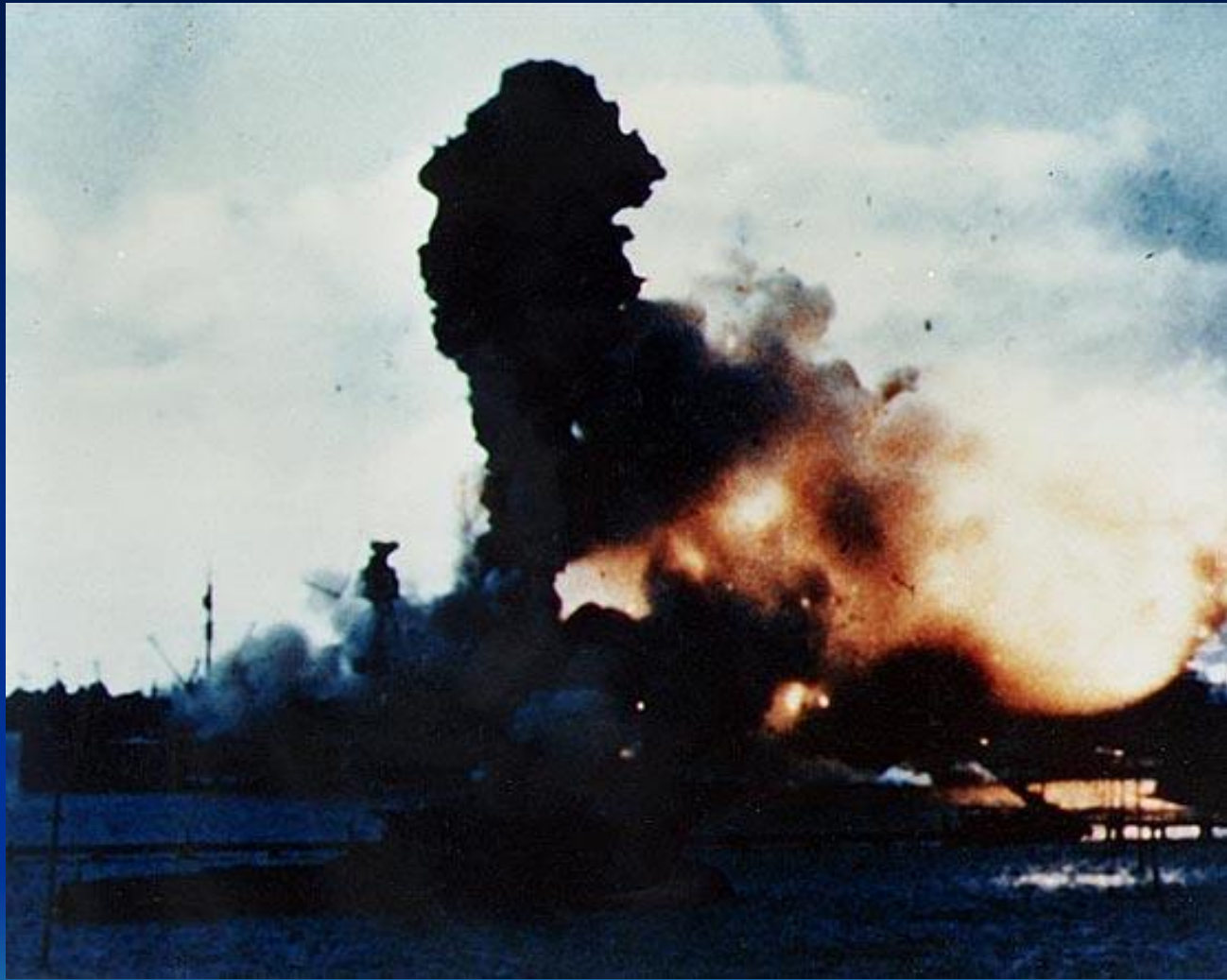
# Pearl Harbor

## December 7, 1941

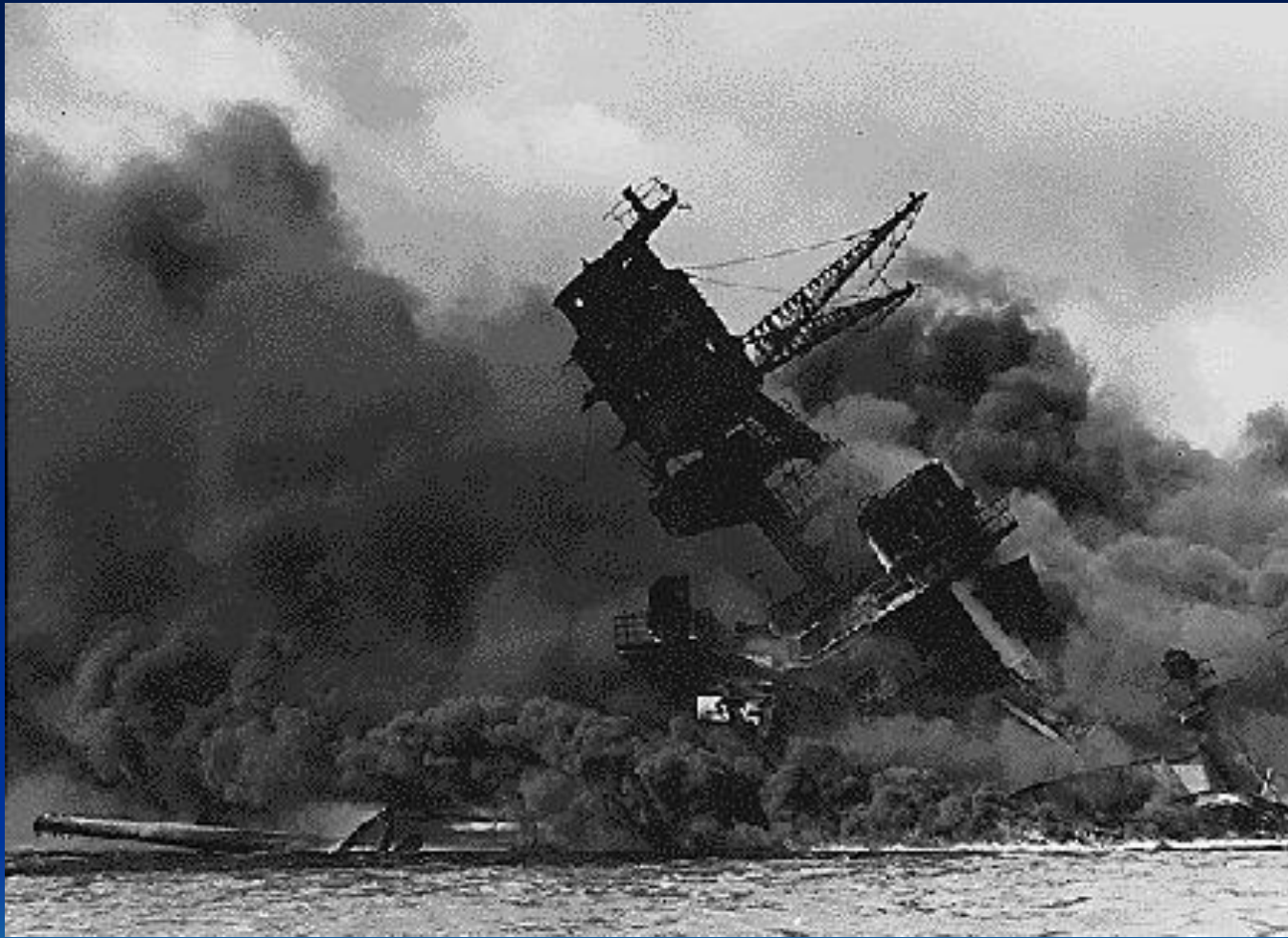
- Planned by Prime Minister Hideki Tojo
- Attack began at 7:55 am. Two waves.
- Total US casualties: 3581, 21 ships damaged.
- Interesting note! For torpedoes to work in shallow water, wooden fins were used.
- US declares war on 12/8/1941











# Pearl Harbor Speech

DRAFT No. 1

December 7, 1941.

## PROPOSED MESSAGE TO THE CONGRESS

Yesterday, December 7, 1941, a date which will live in ~~infamy~~ <sup>infamy</sup> the United States of America was ~~suddenly~~ <sup>suddenly</sup> and deliberately attacked by naval and air forces of the Empire of Japan, ~~with out warning~~.

The United States was at the moment at peace with that nation and was ~~conducting the~~ <sup>still in</sup> conversation with its Government and its Emperor looking toward the maintenance of peace in the Pacific. Indeed, one hour after Japanese air squadrons had commenced bombing in ~~the~~ <sup>Dahu</sup>

the Japanese Ambassador to the United States and his colleague delivered to the Secretary of State a formal reply to a ~~former~~ <sup>recent transmission</sup> message, ~~in which~~ <sup>While</sup> ~~it~~ <sup>stated</sup> that diplomatic negotiations must be considered ~~at an end~~ <sup>it</sup> and contained no threat ~~of~~ <sup>or</sup> hint of ~~an~~ <sup>war or</sup> armed attack.

It will be recorded that the distance ~~between~~ <sup>of</sup> Hawaii from Japan makes it obvious that the ~~attack~~ <sup>was</sup> deliberately planned many days ago. During the intervening time the Japanese Government has deliberately sought to deceive the United States by false statements and expressions of hope for continued peace.

*infamy*  
*suddenly*  
*at the solicitation of Japan*  
*Dahu*  
*recent transmission*  
*While stated it seemed unlikely*  
*or war or*  
*to hasten to 2/15/42*

# Welcome Back!!!

- Bell Ringer: What was the Date of Pearl Harbor? What was one example of the attack that you observed in yesterday's film clip?
- Agenda: Notes, Story time!
- Objective: Through discussion and notes student will identify major battles of the pacific and the fighting experience.





"All the News That's  
Fit to Print."

# The New York Times.

LATE CITY EDITION

Published six days a week  
except on Sundays, legal  
holidays and days of  
observance. Founded 1851.  
Copyright 1941 by The New York Times Company

VOL. 81, NO. 10, 1941

Published for the Proprietor

NEW YORK, MONDAY, DECEMBER 8, 1941

THREE CENTS PER COPY

## JAPAN WARS ON U. S. AND BRITAIN; MAKES SUDDEN ATTACK ON HAWAII; HEAVY FIGHTING AT SEA REPORTED

### CONGRESS DECIDED

Roosevelt Will Address  
It Today and Find It  
Ready to Vote War

### CONFERENCE IS HELD

Legislative Leaders and  
Cabinet in Sober White  
House Talk

By H. H. HENNING.  
Special to the New York Times.  
WASHINGTON, Dec. 8.—(The Associated Press)—President Roosevelt will address a joint session of Congress tomorrow and will find the country ready to vote for war against Japan, according to a confidential source here.

The President will appear personally at 12:45 P. M. Wednesday to make his first broadcast of the year. Japan has not been declared an enemy by Congress.

### TOKYO ACTS FIRST

Declaration Follows Air  
and Sea Attacks on  
U. S. and Britain

### TOGO CALLS ENVOYS

After Fighting in On, Grew  
Gets Japan's Reply to  
Hull Note of Nov. 25

At the moment, the Japanese declaration follows the attack on Pearl Harbor and the attack on British ships in the Pacific.

After fighting in On, Grew gets Japan's reply to Hull note of Nov. 25. The Japanese declaration follows the attack on Pearl Harbor and the attack on British ships in the Pacific.



PACIFIC OCEAN: THEATRE OF WAR INVOLVING UNITED STATES AND ITS ALLIES

Events after the outbreak of hostilities in America with Japan were added from the left. At Shanghai (1) a British merchant was sunk and an American glider lost for the Japanese. On the right, at the Malacca (2), the British battleship was sunk. Tokyo from a Japanese landing on Guadalcanal (3) and the Japanese submarine (4) was sunk. The British battleship was sunk at the Philippines (5).

### GUAM BOMBED; ARMY SHIP IS SUNK

U. S. Fliers Head North From Manila—  
Battleship Oklahoma Set Afire by  
Torpedo Planes at Honolulu

### 104 SOLDIERS KILLED AT FIELD IN HAWAII

Japanese Envoys, at Moment of Attack, Deliver  
Reply to U. S. Note—President Sees Cabinet  
and Drafts Message to Congress

By FRANK L. MACKENZIE.  
Special to the New York Times.  
WASHINGTON, Monday, Dec. 8.—(The Associated Press)—U. S. fliers headed north from Manila, and the battleship Oklahoma was set on fire by torpedo planes at Honolulu.

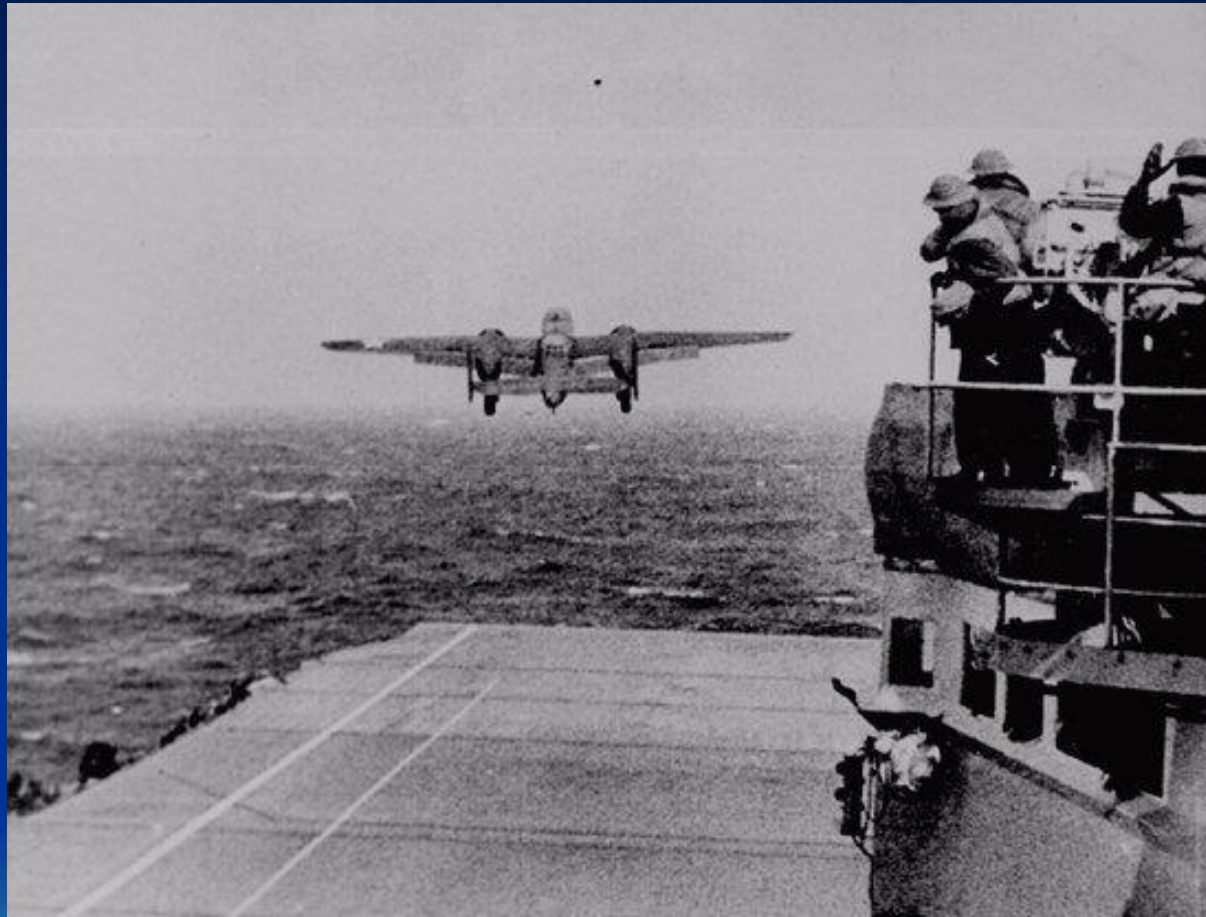
The initial attack in Hawaii, apparently launched by torpedo-planting battleships and submarines, exacted widespread damage and death. It was quickly followed by others. These were reported by the Japanese, which participated in the attack. U.S. ships were sunk from the air, an Army plane on the island of Midway, and Army ships were in Northern Luzon, and in the Philippines. General Douglas MacArthur...

# US Response-Doolittle Raid

## April 1942

- Known as “Tokyo Project” led by Col. James Doolittle
- Outcome: 16 B-25’s lost. 7 injured, 3 killed, 8 taken prisoner.
- Object was to bomb Tokyo (16 pilots) and land in Nationalist China.
- Considered a moral victory





# Strategy in the Pacific

- “Island Hopping”
- Led by General Douglas MacArthur-move north to Australia through New Guinea and back to the Philippines.
- Fighting the Japanese and defeating them Island by Island.
- And Admiral Chester Nimitz-move west from Hawaii towards Japanese outposts in the Pacific.





# Battle of Coral Sea

May 4-8 1942

- Allied objective was to stop Japanese advance towards Australia.
- Air battle (ships did not fire upon each other)
- First time Japanese advance had been stopped.
- 543 American casualties



# Battle of Midway

## June 3-6 1942

- US intercept Japanese fleet trying to take Islands
- Japanese casualties- 4 carriers, 3 destroyers, 275 planes, 4,800 men
- US casualties-one carrier, one destroyer, 150 planes, 307 men
- First defeat for the Japanese in the Pacific
- Japanese never fully recover.









# Battle of Guadalcanal

## August 1942

- Located in the Solomon Islands
- First Allied offensive (19,000 troops)
- Took six months for the Japanese to abandoned.
- Called “island of Death” for its hand-to-hand combat.
- Involved a total of seven naval battles
- Was Japan’s first defeat on land



# Philippine Campaign

October 1944 - August 1945

- March 1942, after 3 months in the Bataan peninsula, MacArthur evacuated the Philippines (“I shall return” )which led to Japanese control of the Islands.
- 76,000 Filipino and American soldiers became captive
- Due to large numbers, many had to walk up to 60 miles to reach a rail center for transport to prison.
- Known as the [Bataan death march.](#)
- Over 5,200 US soldiers died.





# Philippine Campaign

## Battle of Leyte Gulf

- MacArthur returns in September 1944 on the island of Leyte.
- Ground fighting lasted for 2 months
- Japanese tried to destroy landing by launching a massive attack by sea
- Japanese use the tactic of the **Kamikaze** (“divine wind”.)
- An attack where Japanese pilots crashed their planes on suicide missions into Allied ships
- Ends up a disaster for Japan-500 planes lost.



# Welcome Back! Bell Ringer...

- What was the name of the plan to retaliate against the Japanese for Pearl Harbor?
- Explain the strategy in the Pacific.
- What was the outcome of the battle of Midway?
- What was the outcome of the battle of Coral Sea?
- What tactic did the Japanese use in the battle of Leyte Gulf?



# Article Questions...Bataan Death March

- What was the root of Japanese brutality?
- Why was the account of Lt. Colonel Dyess originally withheld from the public?
- What was the purpose of the “Clean up squad?”









# Battle of IWO JIMA

Feb. 19-March 16 1945



# IWO JIMA

## (Sulfur Island)

- US needed island for an airbase (660 miles south of Tokyo .)
- Many large cannons were hidden on Mount Suribachi, a volcano in the middle of the island
- 22,000 Japanese defended the island building caves.
- Between December-February 1945 US continually bombed the island.





# IWO JIMA

- On Feb. 19<sup>th</sup> first wave of Marines land (total 30,000). Within four days Mt. Suribachi was taken.
- Would take another month to secure the island.
- 6,000 Marines died, only 200 Japanese survived.



# Okinawa

## April-June 1945

- Considered Japanese territory
- First time US invades Japanese land
- More than 1900 Kamikazi planes used
- 7,600 US soldiers die along with 110,000 Japanese.
- Give US a naval base 350 miles from mainland Japan



<http://www.militaryhistoryonline.com>



- Soldiers passing through “Death Valley” on Okinawa
- Took 8 hours and 125 lives lost.

# Navajo Code Talkers

- Throughout the Pacific campaign Navajo language was used to secure information from the Japanese
- 400 Navajo were recruited into the Marine Corps. Duty was to transmit telephone and radio messages.

