



**EARLY CHILDHOOD ALLIANCE**  
Uniting for Young Children...the Heart of our Community  
Framingham, MA

# Resource Guide For Early Childhood

- **Choosing Child Care**
  - **Child Care Programs & Preschools**
  - **Preparing Your Child for Kindergarten**
    - **Helpful Community Resources**



**ParentChild+**  
*Equal Possibilities From The Start*



The Early Childhood Alliance of Framingham is funded through the Massachusetts Department of Early Education and Care Coordinated Family and Community Engagement grant, administered by the Framingham Public Schools, and kindly supported by community partners.



# Your Child's Early Development is a Journey

Check off the milestones your child has reached and share your child's progress with the doctor at every visit.

From hospital to home



## 6 months

|  |  |   |   |
|--|--|---|---|
| <input type="checkbox"/> Copies sounds                 | <input type="checkbox"/> Likes to play with others, especially parents | <input type="checkbox"/> Strings vowels together when babbling ("ah", "eh", "oh") | <input type="checkbox"/> Responds to own name |
| <input type="checkbox"/> Begins to sit without support |  |   |   |

## 12 months (1 year)

|   |   |  |   |
|---|---|--|---|
| <input type="checkbox"/> Says "mama" and "dada" | <input type="checkbox"/> Responds to simple spoken requests | <input type="checkbox"/> Copies gestures | <input type="checkbox"/> Uses simple gestures such as shaking head for "no" or waving "bye bye" |
|   | <input type="checkbox"/> Pulls up to stand                  |  |   |

## 18 months (1 1/2 years)

|   |  |  |                                      |
|---|--|--|--------------------------------------|
| <input type="checkbox"/> Knows what ordinary things are for; for example, telephone, brush, spoon | <input type="checkbox"/> Plays simple pretend      | <input type="checkbox"/> Points to show others something interesting | <input type="checkbox"/> Walks alone |
|   | <input type="checkbox"/> Says several single words |  |                                      |

## 2 years

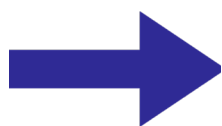
|  |  |  |  |
|--|--|--|--|
| <input type="checkbox"/> Gets excited when with other children | <input type="checkbox"/> Says sentences with 2-4 words | <input type="checkbox"/> Follows simple instructions | <input type="checkbox"/> Points to things or pictures when they're named |
|  |  | <input type="checkbox"/> Kicks a ball                |  |

## 3 years

|   |  |  |  |
|---|--|--|--|
| <input type="checkbox"/> Copies adults and friends (like running when other children run) | <input type="checkbox"/> Carries on a conversation using 2-3 sentences | <input type="checkbox"/> Plays make-believe with dolls, animals and people | <input type="checkbox"/> Shows affection for friends without prompting |
| <input type="checkbox"/> Climbs well  |  |  |  |

## 4 years

|  |   |   |  |
|--|---|---|--|
| <input type="checkbox"/> Tells stories | <input type="checkbox"/> Would rather play with other children than alone | <input type="checkbox"/> Draws a person with 2-4 body parts | <input type="checkbox"/> Hops and stands on one foot for up to 2 seconds |
|  |   |   | <input type="checkbox"/> Plays cooperatively                             |



I am 5!

Welcome to Kindergarten!!

These are just a few of many important milestones to look for. For more complete checklists by age visit [www.cdc.gov/ActEarly](http://www.cdc.gov/ActEarly) or call 1-800-CDC-INFO.

# Resources During Your Journey

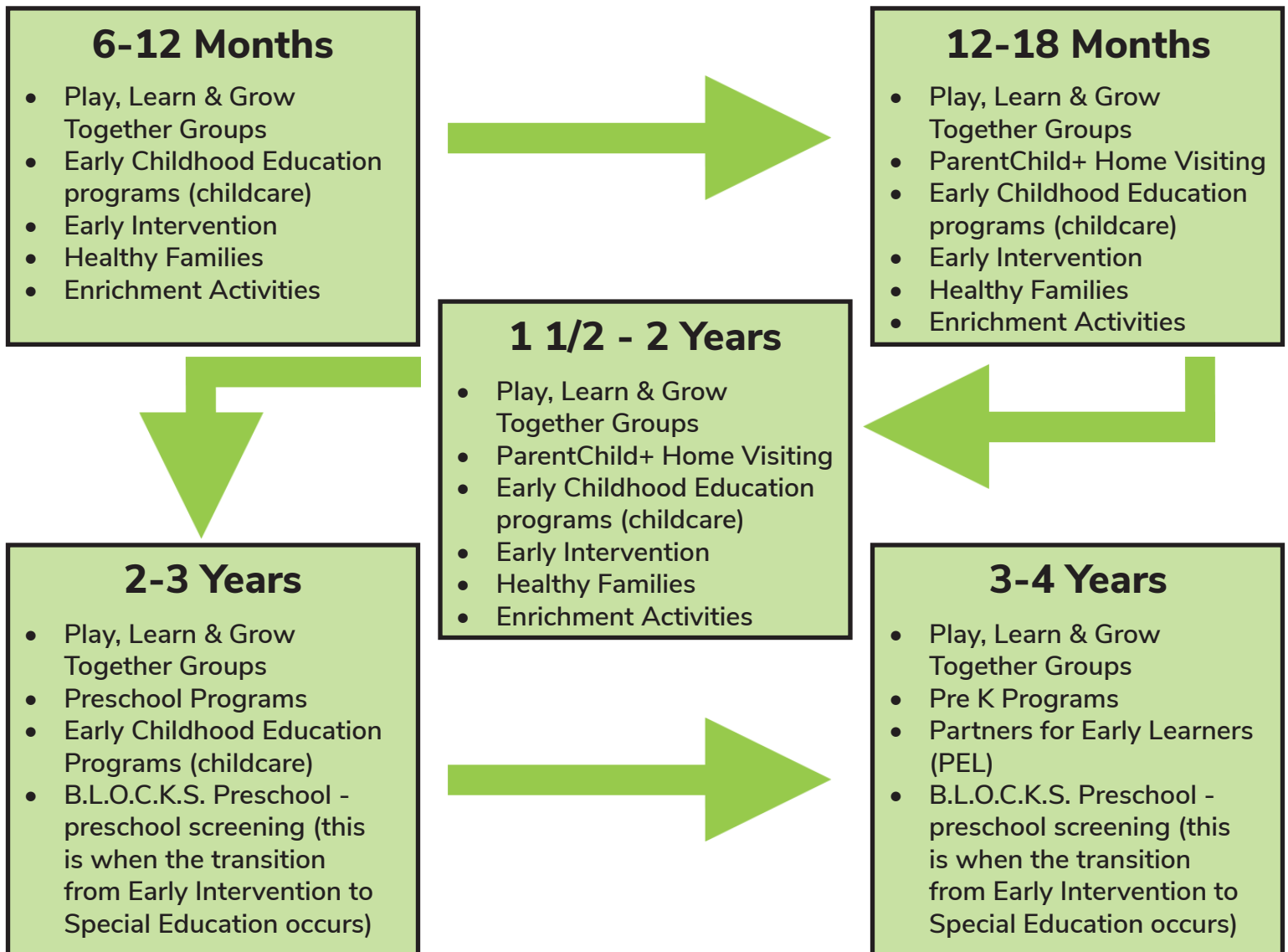
What to do, where to go, and helpful steps along the way.

- OBGYN
- Pediatrician
- WIC
- Visiting Nurse
- Healthy Families
- Federation for Children with Special Needs Library
- Early Childhood Alliance of Framingham
- Early Intervention 0-3
- Child Care Financial Assistance
- Enrichment Activities
- Framingham Public Library

Refer to Resource Guide for Early Childhood for more early childhood resources within our community.

## Common Stops Along the Road

Places throughout Framingham that can play key roles in you and your child's learning path.



# Index

|  |       |
|--|-------|
| <b>Introduction</b> .....                                | 1-3   |
| <b>Choosing Child Care</b>                               |       |
| Types of Early Childhood Education Programs.....         | 4     |
| Licensing Information.....                               | 4     |
| Family “Homework”.....                                   | 5     |
| Visits and Interviews.....                               | 6     |
| Preparing Your Child.....                                | 7-8   |
| <b>Early Childhood Education Programs and Preschools</b> |       |
| About Our Preschool Partners.....                        | 9     |
| Center Based Programs.....                               | 9-10  |
| Providers at-a-Glance.....                               | 11    |
| Family Based Providers.....                              | 12    |
| <b>Framingham Public Schools</b>                         |       |
| Preparing Your Child for Kindergarten.....               | 13    |
| Understanding the Special Education Process.....         | 14    |
| Framingham Public Schools.....                           | 15    |
| Out of School Programs.....                              | 15    |
| Map of Public Schools.....                               | 16    |
| <b>Helpful Community Resources</b>                       |       |
| City of Framingham.....                                  | 17    |
| Important Numbers.....                                   | 17    |
| Emergency Support Services.....                          | 17    |
| Health.....  | 18    |
| Infant and Child Safety/CPR.....                         | 18    |
| Transportation.....                                      | 19    |
| Literacy programs.....                                   | 19    |
| Family Support.....                                      | 20-21 |
| Special Needs Services.....                              | 21    |
| Universities / Colleges.....                             | 22    |
| Recreational Activities.....                             | 23-24 |
| Parks, Beaches, Sports, Playgrounds.....                 | 25-27 |
| Social Media Pages.....                                  | 27    |
| Ready for School Checklist.....                          | 28    |
| For the Record.....                                      | 29    |
| Referral Form.....                                       | 30-31 |



**EARLY CHILDHOOD ALLIANCE**  
Uniting for Young Children...the Heart of our Community  
Framingham, MA

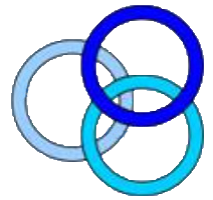


**ParentChild+**  
Equal Possibilities From The Start



# Introduction

*Our vision is a welcoming community for families and professionals that provides comprehensive resources and support for the healthy growth and development of our children.*



Children depend on nurturing caregivers to enrich their environments with activities that nourish early learning. The first critical experiences are those of empowerment, pride, and a love of exploration that makes children eager to discover as they grow.

The Early Childhood Alliance of Framingham encourages you to take the time to do your own exploration when choosing an early learning environment. One of our goals is to make the process of selecting child care less overwhelming and more efficient. We hope the information in these pages will be a useful tool and that the choice you make will lay the foundation for many successful years of learning.

Another priority of the ECAF is to give early childhood educators opportunities to network and enhance their programs. Our dedicated Council consists of directors, educators, parents, and community liaisons that guide the Alliance in developing and implementing initiatives that will strengthen service delivery to young children and their families.

We, at the Early Childhood Alliance of Framingham are proud to make quality child care more accessible. We are happy to discuss how you can pursue a quality early learning setting!



# Overview

## OUR HISTORY

- **1993** - the Massachusetts Department of Education introduced the Community Partnership for Children (CPC) grant program to support local communities in their efforts to develop comprehensive programs and services for children ages 3-5. In Framingham, the program was known as Framingham Family Central.
- **2001**- funding was received to implement the Parent-Child Home Program (PCHP), now known as ParentChild+, a nationally recognized early literacy home visitation program.
- **2005** - the Department of Early Education and Care (EEC) was established and the CPC program became the responsibility of the new agency.
- **2009** - EEC launched a consolidation effort bringing former CPC early childhood programs, services and funding streams together to rename the program the Coordinated Family and Community Engagement Grant (CFCE). The Framingham CFCE, under the auspices of the Framingham Public Schools, launched an initiative in collaboration with community partners, early childhood educators and families to identify and respond to the needs of the early childhood community under the newly formed Early Childhood Alliance of Framingham (ECAAF).

## WHAT WE DO

- Provide a point of entry to **Resources and Services** to help families identify Early Childhood Programs and Community Supports
- Sponsors signature early literacy **“Play, Learn, and Grow Together”** groups
- Ensure quality Early Childhood Education through **Professional Development for Early Childhood Educators**
- Collaborate with the **Family Support and Education Programs** such as Home Visiting and Supportive Services
- Offer home visitation through the **ParentChild+**
- Direct **Kindergarten and Special Education Transition Activities** in collaboration with the Welcome Center
- Have a **Resource Center with Internet Access**
- Promote **Community Advocacy Efforts** that are responsive to the current needs of children prenatal through age 8
- Work with the Community to sponsor **Early Childhood Enrichment Activities**
- Establish **Cross Community Partnerships** to support the Early Childhood Community

## OUR VISION & MISSION

**Our Vision** is a welcoming community for families and professionals that provides comprehensive resources and support for the healthy growth and development of our children.

**Our Mission** is promoting and supporting the healthy growth and development of young children prenatal to age 8 by strengthening families and advocating for high quality learning experiences.

**The Alliance** fulfills its mission by ensuring access to:

1. Early Learning Experiences for Children Prenatal Through Age 8
2. School Readiness Activities
3. Early Childhood Resources and Information
4. Family Support and Education
5. Professional Development for Early Childhood Educators
6. Community Advocacy for Early Childhood Issues
7. Transition supports from home to school, early intervention, preschool, kindergarten, special education and out-of-school time
8. Leadership Opportunities



**EARLY CHILDHOOD ALLIANCE**  
Uniting for Young Children...the Heart of our Community  
Framingham, MA





# About Our Organization and Programs

Early Childhood Alliance of Framingham is a collaboration of community advocates who believe in and actively promote early education.



## Early Childhood Alliance of Framingham (ECAF)

Works in conjunction with the programs below, as well as a dedicated Leadership Council, to advocate on behalf of the Early Childhood Community, to assess community needs, and to ensure the coordination of services.

## Coordinated Family and Community Engagement Program (CFCE)

Sponsors signature early literacy “Play, Learn, and Grow Together” groups for family education & support, resource & referral, school readiness & transition activities for families with young children prenatal to 8 years.

## ParentChild+ Equal Possibilities from the Start

A nationally recognized early literacy program that provides home visits to bring early literacy activities to families with young children ages 18 months to 3 years old.

## Educator and Provider Support Services

Offers early childhood directors and educators access to professional development opportunities whereby they may receive, share, and exchange information through a variety of means such as: a Directors’ Collaborative, e-mail and peer to peer support networks, curriculum exchanges, guest speakers, and ongoing communication providing links to community, regional, and statewide resources.



**EARLY CHILDHOOD ALLIANCE**  
Uniting for Young Children...the Heart of our Community  
Framingham, MA

### For information contact:

Early Childhood Alliance of Framingham  
Framingham, MA 01702  
508-782-6932

[jcohen@framingham.k12.ma.us](mailto:jcohen@framingham.k12.ma.us)

<http://www.framingham.k12.ma.us/Page/2587>

# Types of Early Childhood Education Programs

## Center-Based

Centers serve children full or part-time in groups or classrooms of children. Children are usually grouped according to age:

- **Infant/Toddler:** birth through two years and nine months old
- **Nursery Schools, Preschools, and Pre-K:** two years and nine months old to kindergarten
- **Head Start / Home Based:** ages 3 through Pre-K whose families receive public assistance, children with a disability, and low-income families

## Family Child Care

Family child care is delivered in a provider's home. Children in a family child care home setting may range in age from infant through school age and programs may serve between a maximum of six or ten children (with an additional assistant).

Some Family Child Care Providers are part of a *Family Child Care System*, which provide additional support to providers and families.

## Other Authorized Programs

EEC also authorizes programs that are license-exempt, such as **Public School Preschool Programs**.

To find out if your local Public School offers an early childhood program, call your local public school, or visit The Department of Education's website at: [www.profiles.doe.mass.edu](http://www.profiles.doe.mass.edu)



## Licensing Information

State Licensure and Beyond

### LOOK FOR THE EEC LICENSE

The EEC License means:

- Programs must be healthy, safe, and offer activities that help your child develop and grow.
- Providers have training in first aid and are CPR certified.
- Providers have specialized training in child development, and curriculum implementation.
- All employees are required to undergo a criminal background check.
- Programs must maintain appropriate ratios of teachers to children.



To view EEC licensing regulations and teacher/provider requirements, please visit:

[www.mass.gov/edu/government/departments-and-boards/departments-of-early-education-and-care](http://www.mass.gov/edu/government/departments-and-boards/departments-of-early-education-and-care)

The current state license for all these programs will be posted in a prominent location, so look for the license. You may also see an additional, nationally recognized accreditation on site from the National Association for the Education of Young Children (NAEYC), or, the National Association of Family Child Care (NAFCC).

To learn more about these accreditation agencies visit their sites on the web:

National Association for the Education of Young Children: [www.naeyc.org](http://www.naeyc.org)

National Association for Family Child Care: [www.nafcc.org](http://www.nafcc.org)



# Family “Homework”

## Step 1: Consider Your Options

You know your child best. Make a list of your child’s needs and how he/she would best be satisfied. This can help you make a decision about the most appropriate childcare environment for your child. You have many options, such as:

- Childcare centers are early education programs where your child is in a group setting with children the same age and multiple childcare providers.
- Family childcare where your child stays at someone’s home and the children might range in age.
- In-home care where a childcare provider comes to your home and looks after your child.
- Nursery or pre-schools where your child is in a group setting that is generally not year-round or full-day and has planned educational activities.

## Step 2: Start Your Search Early

If possible, begin visiting childcare settings ahead of time. Ask to see the provider’s license to operate, written health, safety, and emergency procedures, staff qualifications and requirements, including First Aid/CPR and background checks, and staff to child ratios. After you narrow down the choices, plan a visit with your child and see if he/she is comfortable and how he/she interacts with other children and caregivers.

## Step 3: Think About Your Schedule

Make sure the childcare setting meets the needs of your schedule, is easily accessible to you via whatever means of transportation you use, and is in a convenient location to work or home.

## Step 4: Consider Your Financial Situation

Make sure the setting you choose provides quality childcare that is affordable to you. Understand the calendar for the year, tuition schedule, and penalties in case you need to move or leave the provider. Do not necessarily let your choice be affected by your financial situation. There are programs such as **Child Care Resources, Inc. ([www.sevenhills.org](http://www.sevenhills.org))** that can assist you in paying for childcare or provide you with a voucher. You can visit [www.mass.gov/edu/government/departments-and-boards/departments-of-early-education-and-care](http://www.mass.gov/edu/government/departments-and-boards/departments-of-early-education-and-care) to find your local child care resource and referral agency and ask about financial assistance.

## Step 5: Communicate With Caregivers

Don’t be afraid to ask a lot of questions, after all, the caregiver you choose is taking care of someone very special to you. It is important to communicate with childcare providers about your child. Let them know about your child’s personality, likes and dislikes, medical needs, eating and sleeping habits, and other information that will help them get to know and interact with your child. Make sure you check in with them regularly to ask about how your child interacts with other children, how he/she behaves, and what he/she is doing.



# Visits and Interviews

## WHAT TO LOOK FOR ON YOUR VISIT:

- 1 The EEC license!
- 2 Space is clean and inviting.
- 3 You can imagine your child learning and having fun.
- 4 Activity level in the program matches your child's personality.
- 5 Behavior management policies of the program are compatible with your parenting philosophy.
- 6 Daily routine includes indoor and outdoor play and a mix of active and quiet activities.
- 7 Teachers are qualified to work with children and are warm and welcoming.
- 8 Snacks and meals are nutritious and well-balanced.
- 9 Parents are invited to play an active role.
- 10 Staff engages children in activities and conversation.
- 11 Books and toys match the age of the children.

## QUESTIONS TO THINK ABOUT FOR THE INTERVIEW OF THE PROSPECTIVE CHILD CARE PROVIDERS:

- 1 Is your program EEC licensed or authorized as license exempt?
- 2 Do you have any other credentials such as accreditation from the National Association for the Education of Young Children or National Association of Family Child Care?
- 3 What is your educational background and experience?
- 4 Do you hold a Child Development Associate Certificate (CDA) or early childhood or related field degree?
- 5 Do you have any openings?
- 6 What hours are you open?
- 7 What are the ages of the other children my child would be grouped with?
- 8 What is the ratio of adults to children?
- 9 Are there holidays or other dates that the program closes?
- 10 Do you offer part-time or flexible care?
- 11 What backup care is provided in case of provider illness?
- 12 What activities would my child experience?
- 13 How will you accommodate my child with special needs?
- 14 What is your policy when a child is ill?
- 15 Do you have a written discipline policy?
- 16 What type of indoor and outdoor activities do you provide?



# Preparing Your Child For Preschool

Starting preschool is one of the many exciting milestones of childhood. However, it can also be a stressful time for both children and parents, especially if it is your child's first time going to school. If you take some steps to prepare yourself and your child for this new experience, you can ease some of the anxiety you both may have about starting preschool.

## Ease your child in

Begin to prepare your child at least a week before you start leaving him/her in child care. See if you can take your child for short visits a few times before he/she starts the preschool schedule. Talk to your child about the activities he/she will be doing, and where in the schedule, for example after nap or lunch, you will pick him/her up. Allow extra time for dropping your child off for the first few weeks in case he/she has trouble saying good-bye. Even if your child is upset, it is important that he/she knows you are leaving instead of you slipping out while he/she is distracted. Develop and practice a routine for getting ready to go so neither you nor your child are anxious and stressed in the morning.

## Keep everyone calm

It is natural for your child to express fear and anxiety about going to preschool and for you to be nervous, too. Talk to your child about going to preschool and what he/she will do there. If you have older children, children of friends, or nieces and nephews, have them share their stories with your soon-to-be preschooler. Try to keep these conversations casual so your child does not feel intimidated or overwhelmed.

## Go for a visit

Find out if your child's preschool has a visiting day or orientation for parents and children. This is an opportunity for you to talk with the teacher(s) about the preschool, daily activities, and anything else you may have questions about, and for your child to experience the preschool with you present.

## Meet other preschoolers

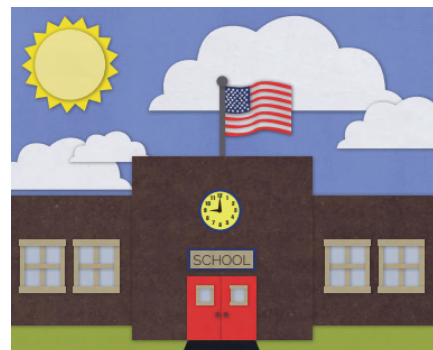
If possible, organize a play date or two with children who will be in your child's preschool class. You may already know families with children the same age as yours, or you might meet some when you visit the school. You can also ask the preschool if there are any families close by to you or new to the school, as well. This way, not every face in the classroom will be unfamiliar when your child goes to preschool the first day, and you can find other parents with whom to share experiences.

## Get into a routine

Start to adjust your child's sleeping and eating schedules slowly in the weeks leading up to the first day of preschool. This may help smooth the transition and make him/her more comfortable when school finally starts and you have to be out the door at a certain time. You can even create a schedule during the day, similar to that which your child will experience in preschool, to get him/her familiar to the structure of switching activities and having set times for lunch, snack, nap, etc.

## Use books to prepare

Include some children's books about the first day of school along with the other books you and your child read together. This will give your child the opportunity to ask questions and express any fears he/she may have. You can ask his/her new teacher(s) or the librarian at your public library for recommendations.



# Preparing Your Child For Preschool

## Practice saying goodbye

Create a “goodbye routine” with your child before the first day of school and talk about what will happen. This can be something as simple as a kiss or a hug, a secret handshake, or a special way of saying goodbye. When it is time for you to leave, make a point of saying good-bye even though it may be difficult for both of you. Sneaking out of the classroom when your child is not looking will make the transition far more difficult for him/her and he/she may become scared and upset when he/she realizes that you are gone.

Thanks to the Massachusetts Department of Early Education and Care (EEC) and excerpts from One Tough Job, a trademark from the Massachusetts Children’s Trust Fund, for granting permission to replicate information from “Choosing ChildCare”, “Types of Child Care”, “Preparing Your Child for Preschool” and “Preparing Your Child for Kindergarten” for this handbook.

## Give it time

Leave plenty of time on the first day to arrive at school and be prepared to spend some time in the classroom with your child. Some preschools even request that parents stay in the classroom on the first day with their child, or at least for part of the day. Anticipate some ups and downs the first few weeks of school as your child gets adjusted. Even children are allowed to have bad days.

## About Our Early Childhood Educators

ECAF is proud to provide families with a comprehensive local listing of high quality early childhood education opportunities in a variety of settings that meet the individual child’s needs and family philosophy for early learning. Center based and family home care providers strive to reach the latest in best practices outlined in the field of early childhood and the National Association for the Education of Young Children (NAEYC). Some of the providers listed here have received credentials beyond the state licensing requirements and deserve the recognition for their dedication to upholding the rigorous standards to obtain such credentials.

We take special note of those early childhood education programs who go above and beyond the EEC Licensing standards. These programs demonstrate a commitment to ECAF’s goals through their achievement of NAEYC accreditation and continued active participation and support on the Directors Collaborative and/or the ECAF Council. Take note of the NAEYC logo when doing your research.

We sponsor educational events and access to professional development activities to enrich the early childhood community. These valuable partners provide expertise as to the direction of where the field of early learning is going in the future so we can stay cutting edge in curriculum development, best practice standards, professional growth opportunities for educators and so on. Their collaborative efforts support ECAF’s mission to provide ALL children with a quality early learning experience. We are fortunate to have these educators give us a true pulse of the early childhood community’s needs in order to design responsive early learning programs for our young children and families.

# Center Based Childcare Programs & Preschools- Framingham

Early Childhood centers where your child is in a group setting with children the same age and multiple childcare providers.

Some programs accept the EEC financial assistance vouchers for child care.

The Early Childhood Alliance does not endorse any one program. Our purpose is to provide educational and resource information only.

For a comprehensive listing of programs go to: [www.eeclead.force.com/EEC\\_ChildCareSearch](http://www.eeclead.force.com/EEC_ChildCareSearch)

---

## **B.L.O.C.K.S Preschool**

Serves Ages: 3yrs - 5yrs  
29 Upper Joclyn Ave.,  
Framingham  
508-788-2380  
[www.framingham.k12.ma.us/blocks.cfm](http://www.framingham.k12.ma.us/blocks.cfm)

## **Circle of Friends**

Serves Ages: 8 wks - 6 yrs  
61 Nicholas Rd., Framingham  
508-877-2593  
[www.cofps.org](http://www.cofps.org)

## **First Circle Learning**

Serves Ages: 15 mos - 5 yrs  
27 Cherry St., Framingham  
508-875-4215  
[www.firstcirclelearning.com](http://www.firstcirclelearning.com)

## **Framingham Centre Nursery School**

Serves Ages: 2 yrs - Pre-K  
24 Vernon St., Framingham  
508-875-8260  
[www.fcnsma.org](http://www.fcnsma.org)

## **Framingham State University Centers for Early Childhood Education**

Serve Ages: 2 yrs 9 mos - 5 yrs  
[www.framingham.edu/  
the-fsu-difference/cen-  
ters-and-institutes/cen-  
ters-for-early-childhood-educa-  
tion/index](http://www.framingham.edu/the-fsu-difference/centers-and-institutes/centers-for-early-childhood-education/index)

## **Early Childhood Center**

2 Church St., Framingham  
508-626-4084

## **Jeanne M. Canelli Child Development Lab**

100 State St., Hemenway Hall  
106, Framingham  
508-626-4739

## **Kiddie Academy**

Serves Ages: Infant – 6 yrs  
1292 Worcester Rd.,  
Framingham  
508-270-2700  
[www.kiddieacademy.com/fram-  
ingham](http://www.kiddieacademy.com/framingham)

## **KinderCare at Work**

Serves Ages: 6 wks-8 yrs  
770 Cochituate Rd, Framingham  
508-390-2700  
[www.kindercare.com](http://www.kindercare.com)

## **KinderCare Learning Center**

Serves Ages: 6 wks-5 yrs  
73 Harrington Rd., Framingham  
508-877-7383  
[www.kindercare.com/our-cen-  
ters/framingham/ma/300689/](http://www.kindercare.com/our-centers/framingham/ma/300689/)

## **Little Acorns Children's Center**

Serves Ages: 2 mos – 5 yrs  
300 Pleasant St., Framingham  
508-470-6330  
[www.littleacornschilrenscenter.  
com](http://www.littleacornschilrenscenter.com)

## **Little Footprints in the Sand**

Serves Ages: 3 mos – 6 yrs  
89 Bethany Rd., Framingham  
508-875-5777



# Center Based Childcare Programs & Preschools - Framingham

Early Childhood centers where your child is in a group setting with children the same age and multiple childcare providers.

Some programs accept the EEC financial assistance vouchers for child care.

The Early Childhood Alliance does not endorse any one program. Our purpose is to provide educational and resource information only.

For a comprehensive listing of programs go to: [www.eeclead.force.com/EEC\\_ChildCareSearch](http://www.eeclead.force.com/EEC_ChildCareSearch)

---

## Loving Nest

Serves Ages: 2.9 yrs – 5 yrs  
562 Waverly St., Framingham  
508-309-6729  
[www.lovingnestpreschool.com](http://www.lovingnestpreschool.com)

## MetroWest YMCA Early Childhood Center

Serves Ages: 15 mos – 6 yrs  
282 Old Connecticut Path,  
Framingham  
508-879-4420 (ext. 251)  
[www.metrowestymca.org/programs/early-learning-center-framingham-branch](http://www.metrowestymca.org/programs/early-learning-center-framingham-branch)

## Mountainside Children's Center

Serves Ages: Infants - 5 yrs  
100 Pennsylvania Ave.,  
Framingham  
508-820-9300  
[www.mountainsideschool.org](http://www.mountainsideschool.org)

## Over the Rainbow

Serves Ages: Infants - 6 yrs  
76 Salem End Rd., Framingham  
508-877-9237  
[www.overtherainbownursery-school.com](http://www.overtherainbownursery-school.com)

## Plymouth House Nursery School

Serves Ages: 2 yrs - 5 yrs  
87 Edgell Rd., Framingham  
508-875-1001  
[www.plymouthhousenursery-school.com](http://www.plymouthhousenursery-school.com)

## Shining Stars Preschool

Serves Ages: 2 yrs 9 mos - 5 yrs  
214 Concord St., Framingham  
508-848-2402  
[www.shiningstarspreschool.org](http://www.shiningstarspreschool.org)

## SMOC Child Care & Head Start

Serves Ages: Infant - 5th Grade  
12 Roxanna St., Framingham  
General: 508-620-2373  
Intake: 508-820-8380  
[www.smoc.org](http://www.smoc.org)

## Staples Child Care-Bright Horizons

Serves Ages: Infant - 5 yrs  
600 Staples Dr., Framingham  
508-253-0555  
[centers.bright Horizons.com/staples](http://centers.bright Horizons.com/staples)

## Suburban Child

Serves Ages: 18 wks - 14 yrs  
10 Roxanna St., Framingham  
508-879-6544  
[suburbanchild.org](http://suburbanchild.org)

## Summit Montessori

Serves Ages: 18 mos - 5 yrs  
283 Pleasant St., Framingham  
508-872-3630  
[www.summitmontessori.org](http://www.summitmontessori.org)

## Partnerships for Early Learners (PEL) at Framingham Public Schools

Partnerships for Early Learners (PEL) offers 4-year-old children in Framingham the opportunity to attend their first PreK experience before entering Kindergarten. To be eligible, children must not have had an early childhood learning experience due to lack of access, resources, finances or opportunity and be four-years-old by August 31.

For more information, contact Christina Shea; Early Education Manager at [cshea@framingham.k12.ma](mailto:cshea@framingham.k12.ma).

# Framingham Center-Based Providers At-A-Glance

| Provider Name                             | Year Round | School Year | Summer | Full Day | Half Day (AM/PM) | Extended Day | Infant - 3 yrs | 2 yrs - 5 yrs | School Age | Meals Included |
|---|------------|-------------|--------|----------|------------------|--------------|----------------|---------------|------------|----------------|
| B.L.O.C.K.S. Preschool                    |            | X           |        | X        | X                | X            |                | X             |            |                |
| Circle of Friends                         | X          | X           | X      | X        | X                | X            | X              | X             |            |                |
| Early Childhood Center @ Framingham State | X          | X           | X      | X        |                  |              |                | X             |            |                |
| First Circle Learning                     | X          | X           | X      | X        |                  |              | X              | X             |            |                |
| Framingham Centre Nursery School          |            | X           | X      | X        | X                | X            |                | X             | X          |                |
| Framingham State Child Development Lab    |            | X           |        |          | X                |              |                | X             |            |                |
| Kiddie Academy                            | X          | X           | X      | X        | X                |              | X              | X             |            | X              |
| KinderCare Learning Center                | X          | X           | X      | X        | X                | X            | X              | X             | X          | X              |
| Little Acorns                             | X          |             |        | X        |                  |              | X              | X             | X          | X              |
| Little Footprints in the Sand             | X          | X           | X      | X        | X                |              | X              | X             |            |                |
| Loving Nest                               | X          |             |        | X        |                  |              |                | X             |            |                |
| Metrowest YMCA Early Learning Center      | X          |             |        | X        |                  |              |                | X             |            | X              |
| Mountainside Children's Center            | X          |             |        | X        |                  |              | X              | X             |            |                |
| Over the Rainbow                          | X          | X           | X      | X        | X                | X            | X              | X             |            |                |
| Plymouth House Nursery School             |            | X           |        |          | X                | X            |                | X             |            |                |
| Shining Stars Preschool                   | X          | X           | X      | X        | X                | X            |                | X             |            |                |
| SMOC Child Care and Head Start            | X          |             |        | X        |                  |              | X              | X             | X          | X              |
| Staples Child Care / Bright Horizons      | X          |             |        | X        |                  |              | X              | X             |            |                |
| Suburban Child                            | X          |             | X      | X        | X                | X            | X              | X             | X          |                |
| Summit Montessori                         |            | X           | X      | X        | X                | X            |                | X             | X          |                |



# Preparing Your Child For Kindergarten

Starting kindergarten is a big but exciting transition in a child's life. It can be scary and stressful for both you and your child, especially if this is your child's first experience in school. However, if you take some steps to prepare yourself and your child for this new experience, you can ease some of the anxiety and get your child's schooling off to a great start!

## Start talking early

Start talking about kindergarten a few weeks before school starts. Tell your child all of the positive and exciting things about kindergarten, but also listen to him/her and answer his/her questions. Be sure to listen for emotions such as excitement, fear, anxiety, and confusion. Provide answers to his/her questions, but also comfort and reassurance to help him/her feel more confident about going to kindergarten.

## Go for a visit

Find out if your child's kindergarten class has an orientation or a visiting day. You and your child can meet the teacher(s) and other children who will be in the class as well as other parents, and you can find out what his/her daily schedule will be like. If not, take your child to the school, walk around the grounds together, and play on the playground.

## Get to know other kindergarteners.

If possible, organize a playdate or two with children who will be in your child's class. You may already know families with children the same age as yours, or you might meet some when you visit the school. You can also ask the teacher(s) if there are any families close by to you. This way, not every face in the classroom will be unfamiliar when your child goes to school the first day, and you can find other parents with whom to share the experiences.



## Get into a routine

In the weeks before your child starts kindergarten, establish a school day routine. Put your child to bed as if it were a school night and have him/her wake up in the morning and get ready (get dressed, have breakfast, wash up) as if it were a school morning. If this is your child's first experience in a school setting, create a schedule during the day similar to that which she will experience in preschool to get her used to the structure. If your child will be taking a lunch or snack, make sure that any containers and packages are user-friendly. If your child takes a backpack to school, make sure it is a good fit and easy for her to get on and off.

## Practice everyday activities

If your child has never been to school before, there may be a few things you want to practice with your child in the weeks leading up to kindergarten. If you are not sure your child can do things like use the bathroom on his/her own, take off and put on his/her shoes, or put his/her jacket on, you may want to work on these things with him/her. Ask the classroom teacher(s) what your child will be expected to know how to do, and let them know if there is anything with which he/she struggles.

## Give it time

Leave plenty of time on the first day to arrive at school, especially if this is your child's first school experience. When it is time for you to leave, make a point of saying goodbye. Sneaking out of the classroom when your child is not looking will make the transition far more difficult for him/her and may even scare him/her when he realizes that you are gone. It takes some children longer than others to adjust and become comfortable with the new school routine. Anticipate some ups and downs during the first few weeks. If you are struggling or have concerns about how the transition is going, ask your child's teacher(s) for some ideas.



# Understand the Special Education Process

## A brief overview for students eligible for Special Education

Below is a brief overview of how a student is found eligible for special education, how the IEP is developed and implemented, and how progress is measured.





# Framingham Public Schools

[www.framingham.k12.ma.us](http://www.framingham.k12.ma.us)

## Contact Information:

|  |              |
|--|--------------|
| Superintendent's Office.....                               | 508-626-9117 |
| Student Registration (Welcome Center).....                 | 508-424-3420 |
| Special Education Department .....                         | 508-626-9123 |
| Office of Equity, Diversity and Community Engagement ..... | 508-626-6878 |
| Transportation.....  | 508-626-9179 |

## Early Education:

|                                  |              |
|----------------------------------|--------------|
| Early Childhood Alliance .....   | 508-782-6932 |
| B.L.O.C.K.S. Preschool.....      | 508-788-2380 |
| Partners for Early Learners..... | 508-782-6898 |

| Elementary Schools |              |
|--------------------|--------------|
| Barbieri           | 508-626-9187 |
| Brophy             | 508-626-9158 |
| Dunning            | 508-626-9155 |
| Harmony Grove      | 508-626-9164 |
| Hemenway           | 508-626-9149 |
| King               | 508-782-7201 |
| McCarthy           | 508-626-9161 |
| Potter Road        | 508-626-9110 |
| Stapleton          | 508-626-9143 |

| Middle Schools           |              |
|--------------------------|--------------|
| Cameron                  | 508-879-2290 |
| Fuller                   | 508-620-4956 |
| Walsh                    | 508-626-9180 |
| McAuliffe Charter School | 508-879-9000 |

| High Schools                     |              |
|----------------------------------|--------------|
| Framingham High School           | 508-620-4963 |
| FHS- Thayer Campus               | 508-626-9191 |
| Joseph P. Keefe Technical School | 508-416-2100 |

## Out-of-School Time

### Boys & Girls Club of Metrowest

25 Clinton St., Framingham  
508-620-7145  
[www.bgcmetrowest.org](http://www.bgcmetrowest.org)

### Explorers

The in-house Elementary Out of School Time program of Framingham Public Schools is housed at BLOCKS and all elementary schools.  
508-782-6887  
[www.pscrd.org](http://www.pscrd.org)

### Hoops and Homework

Two Locations:  
9 Pusan Rd., Framingham  
12 Interfaith Terrace,  
Framingham  
508-380-1196  
[www.info@hoopsandhomeworkinc.com](mailto:www.info@hoopsandhomeworkinc.com)

### Metrowest YMCA Framingham

280 Old Connecticut Path,  
Framingham  
508-879-4420  
[www.metrowestymca.org](http://www.metrowestymca.org)

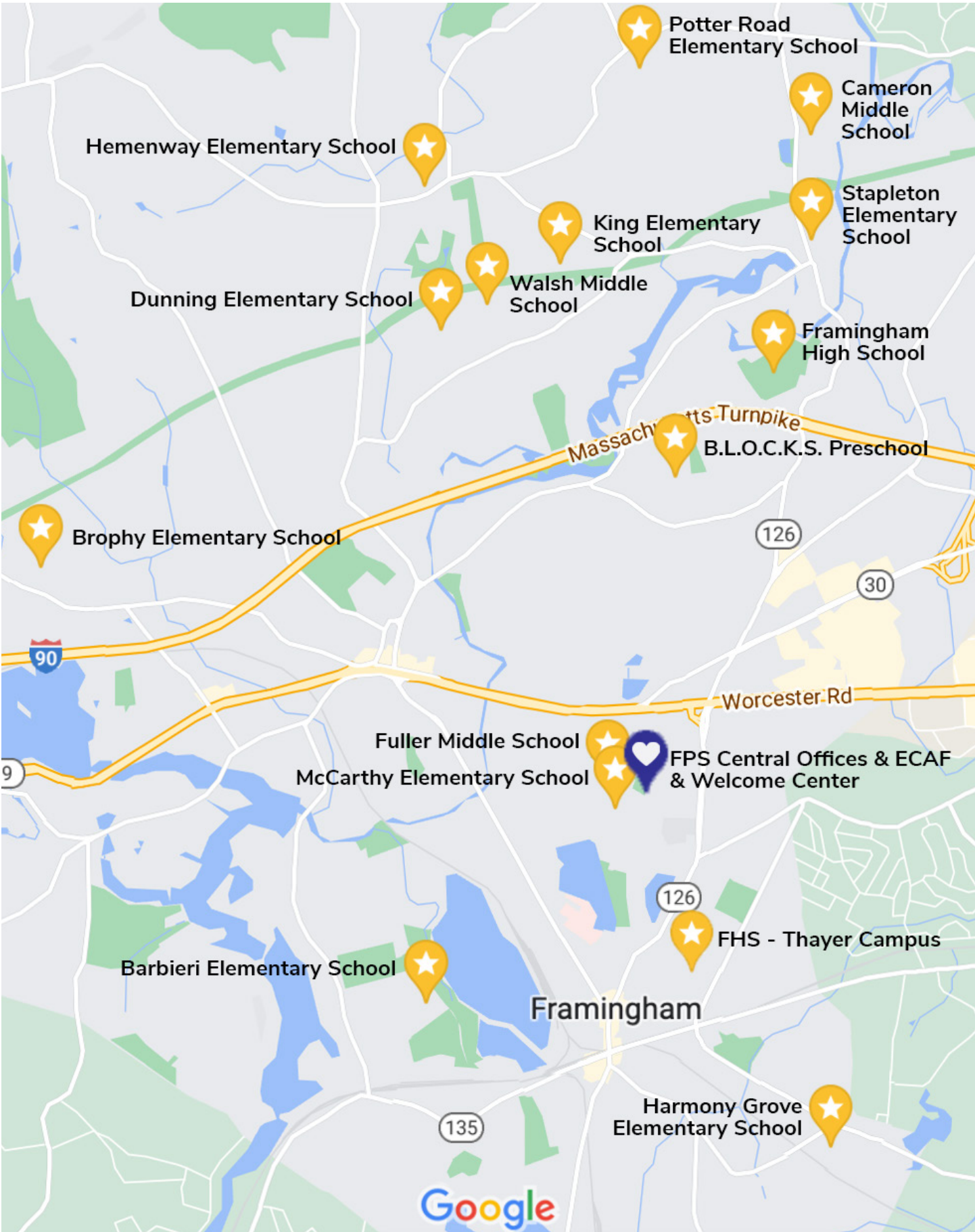
### SMOC

12 Roxanna St., Framingham  
508-620-2373  
[www.smoc.org](http://www.smoc.org)

### Suburban Child

10 Roxanna St., Framingham  
508-879-6544  
[suburbanchild.org](http://suburbanchild.org)

# Map of Elementary Schools



# Helpful Community Resources

## City of Framingham

Framingham City Hall - Memorial Building, 150 Concord Street. City Offices, Nevins Hall  
[www.framinghamma.gov](http://www.framinghamma.gov)

### Important Numbers

---

|  |  |
|--|--|
| EMERGENCY .....                            | 911  |
| Poison Control .....                       | 800-682-9211   |
| Mass 211 Information & Referral Line ..... | 1-877-211-6277                                       |
| .....                                      | <a href="http://www.mass211.org">www.mass211.org</a> |

---

### Emergency Assistance / Crisis Intervention

#### A Place To Turn

99 Hartford St. Rear, Natick  
508-655-8868  
[www.aplacetoturn-natick.org](http://www.aplacetoturn-natick.org)  
Services include: emergency food and clothing to individuals and families.

#### Advocates Incorporated

1881 Worcester Rd., Framingham  
508-628-6300  
[www.advocates.org](http://www.advocates.org)  
Meeting the needs of individuals and families facing diverse life challenges through the provision of counseling, residential and home based support, school and court outreach.

#### Advocates Psychiatric Emergency Services (PES)

Local: 508-872-3333  
General: 1-800-640-5432  
A team provides mobile crisis intervention services to individuals & families of all ages.

#### Daniel's Table

10 Pearl St., Framingham  
508-405-0769  
[www.danielstable.org](http://www.danielstable.org)

#### Framingham Housing Authority

1 John J. Brady Dr., Framingham  
508-879-7562  
[www.framha.org](http://www.framha.org)  
Family, Veterans, elderly and congregate housing, Section 8, and housing rehabilitation program.

#### Metrowest Harvest Food Bank

300 Howard St., Framingham  
508-788-3663  
Emergency food assistance.

#### Parental Stress Hotline

800-632-8188

#### Pearl Street Cupboard and Café

46 Park St., Framingham  
888-811-3291  
[www.uwotc.org/pearl](http://www.uwotc.org/pearl)

#### South Middlesex Opportunity Council

7 Bishop St., Framingham  
508-788-3663  
[www.smoc.org](http://www.smoc.org)  
Social service agency providing behavioral health services, substance abuse services, crisis intervention, criminal justice/re-entry programs, employment/adult education, fuel/financial assistance, housing assistance.



# Helpful Community Resources

## Health

**MassHealth**..... 800-841-2900

**Dental Health**..... 800-207-5019

Consumers of MassHealth may receive funds for transportation services for health care services.

### **Edward M. Kennedy Community Health Center**

354 Waverly Street, Framingham..... 508-852-1805

Optometry Department

72 Union Ave., Framingham .....508-852-1805 ext. 1765

Dental Clinic

32 Concord St., Framingham.....508-852-1805 ext. 1115

[www.kennedychc.org](http://www.kennedychc.org)

### **Latino Health Insurance Program**

88 Waverly St., Framingham..... 508-875-1237

[www.lhiprogram.org](http://www.lhiprogram.org)

Provides assistance applying for health insurance through the Health Connector, offers preventative medical services to uninsured and underinsured; provides community health education and service coordination for seniors and other adults.

### **Metro West Medical Center**

Pediatric Clinic

115 Lincoln St., Framingham..... 508-383-1000

**MA Lead Poisoning Prevention Program** ..... 800-532-9571

### **SMOC Behavioral Health Services (BHS)**

7 Bishop St., Framingham ..... 508-879-2250

[www.smoc.org/behavioral-health-services.php](http://www.smoc.org/behavioral-health-services.php)

SMOC BHS provides family stabilization services as well as outpatient mental health services and in-home therapy to children, families and adults. SMOC has the language capacity to serve families speaking Spanish, Portuguese and other languages.

### **Visiting Nurse Association (VNA)**

55 West St., Walpole ..... 508-653-3081

[www.natickvna.org](http://www.natickvna.org)

### **WIC Nutrition Program**

7 Bishop St., Framingham ..... 508-620-1445

[www.mass.gov/wic](http://www.mass.gov/wic)

Provides nutrition and health education, healthy food and other free services to qualified families.

---

## **Infant & Child Safety / CPR**

### **American Red Cross Century Health Systems**

209 W. Central St., Suite 311, Natick..... 508-595-3700

[www.centuryhealth.org](http://www.centuryhealth.org)

Adult/pediatric CPR & First Aid.

# Helpful Community Resources

## Transportation

### Metrowest Regional Transit Authority (formerly LIFT)

15 Blandin Ave., Framingham ..... 508-935-2222  
[www.mwrta.com](http://www.mwrta.com)

Local scheduled bus service in Framingham with connections to Natick Neighborhood Bus and other surrounding towns.

### Massachusetts Bay Transportation Authority (MBTA)

10 Park Plaza, Boston..... 800-392-6100  
[www.mbta.com](http://www.mbta.com)

---

## Literacy Programs

### Early Childhood Alliance - Coordinated Family and Community Engagement (CFCE)

19 Flagg Dr., Framingham..... 508-782-6932  
[www.framingham.k12.ma.us/Domain/72](http://www.framingham.k12.ma.us/Domain/72)

Early literacy signature “Play Learn and Grow Together” groups, family education & support, resource & referral, school readiness & transition activities for families with young children prenatal to 8 years.

### ParentChild+

19 Flagg Dr., Framingham..... 508-782-6932  
[www.framingham.k12.ma.us/Domain/72](http://www.framingham.k12.ma.us/Domain/72)

Home visiting early literacy and school readiness program for children ages 18 months to 3 years.

### Framingham Adult English As A Second Language + Program

19 Flagg Dr., Framingham..... 508-626-4282  
[www.faesl.org](http://www.faesl.org)

English classes at six levels, GED, citizenship classes and more. New classes begin in September and January. All classes are free. Spaces are determined by lottery.

### Framingham Public Library

#### Main Branch

49 Lexington St., Framingham..... 508-532-5570

#### McAuliffe Branch

746 Water St., Framingham ..... 508-532-5636  
[www.framinghamlibrary.org](http://www.framinghamlibrary.org)

### Joan Brack Adult Learning Center

7 Bishop St., Framingham ..... 508-620-2677  
[www.smoc.org/joan-brack-adult-learning-center.php](http://www.smoc.org/joan-brack-adult-learning-center.php)

Offers free GED and ESL classes for adults.

### Literacy Unlimited

49 Lexington St., Framingham..... 508-532-5574  
[www.framinghamlibrary.org/literacy/our-program/](http://www.framinghamlibrary.org/literacy/our-program/)

1:1 tutoring for adults in basic education, reading, writing, GED and ESL.



# Helpful Community Resources

## Family Support Services

### Community Kangaroo

[www.communitykangaroo.com](http://www.communitykangaroo.com)

Sign up for a free weekly e-newsletter to get connected to family friendly activities!

### Department of Children & Family Services

300 Howard St., Framingham..... 508-424-0100

[www.mass.gov/dcf](http://www.mass.gov/dcf)

Family support, child abuse prevention, and crisis intervention.

### Department of Transitional Assistance

300 Howard St., Framingham..... 508-661-6600

[www.mass.gov/dta](http://www.mass.gov/dta)

Services include: food/nutrition assistance, employment support, and financial assistance.

### Healthy Families of Framingham

375 Fortune Blvd., Milford..... 508-482-5939

[www.criterionchild.com/index.php/programs/newborn-home-visiting](http://www.criterionchild.com/index.php/programs/newborn-home-visiting)

Home visiting, family support, and education on child development from pre-natal to age 3, for first time parents age 20 and under.

### Jewish Family Service of Metrowest

475 Franklin St., Suite 101, Framingham..... 508-875-3100

[www.jfsmw.org](http://www.jfsmw.org)

Services include: adoption, elder care, citizenship assistance, parent education/support, and food assistance.

### Metrowest Legal Services

63 Fountain St., Suite 304, Framingham..... 508-620-1830

[www.mwlegal.org](http://www.mwlegal.org)

Free civil legal services to eligible people especially around housing, government, government benefits, and domestic violence.

### Parents Helping Parents

108 Water St., Watertown ..... 800-882-1250

[www.parentshelpingparents.org](http://www.parentshelpingparents.org)

### Pelham Life Long Learning Center

103 Second St., Framingham..... 508-879-5484

[www.pelhamlearningcenter.org](http://www.pelhamlearningcenter.org)

Offers a variety of programs for children, youth, and adults including homework help, drop-in youth programs, information & referral services, and more.

### Social Security Administration

100 Concord St., Framingham..... 508-875-5047

..... 1-800-772-1213

Administration of social security and social security insurance programs; issuing of social security identification numbers.

# Helpful Community Resources

## Family Support Services

### United Way of Massachusetts Tri-County

46 Park St. # 2, Framingham..... 508-872-3291

[www.uwotc.org](http://www.uwotc.org)

Supporting families through health, education, income, and basic needs initiatives that include: MASS 211, Distribution Centers, and Food Bank.

### The Freedman Center for Child and Family Development

1 Wells Ave., Newton ..... 617-332-3666

[www.mspp.edu/freedman](http://www.mspp.edu/freedman)

Providing family education to young children, families and educators. Interface referral service.

### Wayside Youth & Family Support Network

88 Lincoln St., Framingham ..... 508-620-0010

[www.waysideyouth.org](http://www.waysideyouth.org)

Offers family support group programs and more at the Family Resource Center.

---

## Special Needs Services

### Criterion-Middlesex Early Intervention

651 Franklin St., Framingham ..... 508-620-1442

[www.criterionchild.com/index.php/programs/early-intervention/26](http://www.criterionchild.com/index.php/programs/early-intervention/26)

Screens children under 3 years for developmental delays and provides services at home and at the center in a group setting. Covered by health insurance. Parents can make the referral.

### Federation for Children with Special Needs

The Schrafft Center

529 Main St., Suite 1M3 Boston,..... 617-236-7210

..... 800-331-0688

[www.fcsn.org](http://www.fcsn.org)

An organization that works with parents and other parent organizations to assist children with special needs and their families. Offers several free workshops for parents.

### South Bay Early Childhood

1 Grant St., Framingham..... 508-834-3100

[www.southbaycommunityservices.com/services/early-childhood-servicesc](http://www.southbaycommunityservices.com/services/early-childhood-servicesc)

Offers Early Intervention services for children 3 and under. Services are available in homes and onsite.

### Special Education Parent Advisory Council- F-SEPAC

See Framingham Public Schools Website:..... [www.framingham.k12.ma.us](http://www.framingham.k12.ma.us)

### Special Needs Advocacy Network

P.O. Box 269, Natick..... 508-655-7999

[www.spanmass.org](http://www.spanmass.org)

# Helpful Community Resources

## Universities / Colleges / Continuing Education

### Framingham State University

100 State St., Framingham ..... 508-626-1220  
[www.framingham.edu](http://www.framingham.edu)

Framingham State University offers a 4 year degree for undergraduate and graduate college education.



**Framingham**  
State University

### Joseph P. Keefe Technical High School

750 Winter St., Framingham ..... 508-416-2100  
[www.keefetech.org](http://www.keefetech.org)

Adult education evening classes, recreational swim, summer career exploration and sports camps.



### MassBay Community College

19 Flagg Dr., Framingham ..... 508-270-4000  
[www.massbay.edu](http://www.massbay.edu)

MassBay offers numerous programs of study. They include Associate degrees, Certificate programs, and Corporate & Community Education.



### Regis College

235 Wellesley St., Weston ..... 781-768-7000  
[www.regiscollege.edu](http://www.regiscollege.edu)

Many degree programs are offered at the associate, bachelor, master and doctorate levels and online.



**Regis**  
COLLEGE

# Helpful Community Resources

## Recreational & Enrichment Activities

### **ātac downtown art + music**

160 Hollis St., Framingham..... 508-405-ARTS(2787)

[atac160.org](http://atac160.org)

Musical & theatrical performances & art displays.

### **Brazilian American Center (BRACE)**

560 Waverly St., Framingham ..... 508-628-0360

[www.brazilianamericancenter.org](http://www.brazilianamericancenter.org)

Education, cultural programs, sports, the arts and services for immigrants.\*Open only 6-9pm.

### **Concerts on the Green**

Town Common - Edgell Rd., Framingham

Every Friday evening, 6:30pm, June - August. Free live, outdoor concerts (including swing, rock, jazz, etc.). Buy food there or bring your own - picnicking encouraged. Bring blankets and/or chairs for seating.

### **Chris Walsh Center for Educators and Families of MetroWest**

Framingham State University, 100 State St., Framingham..... 508-626-4050

[www.framingham.edu](http://www.framingham.edu)

Education for families and educators. Stem learning at planetarium, space education and exhibits for general public.

### **Danforth Art**

Framingham State University, 100 State St., Framingham..... 508-215-5110

[www.danforth.framingham.edu/](http://www.danforth.framingham.edu/)

Galleries, special exhibits, introductory through advanced courses for all ages.

### **Framingham.com**

[www.framingham.com](http://www.framingham.com)

Community calendar, news, and businesses.

### **Framingham Historical Society**

16 Vernon St., Framingham ..... 508-872-3780

[www.framinghamhistory.org/](http://www.framinghamhistory.org/)

Collection of historical artifacts and a research archive relating to five centuries of history in Framingham.

### **Framingham Parks & Recreation Department**

475 Union St., Framingham ..... 508-532-5960

[www.framinghamma.gov/parks](http://www.framinghamma.gov/parks)

A variety of activities offered to children and adults every season including lessons in all kinds of sports, kids crafts, family and adult trips.

# Helpful Community Resources

## Recreational & Enrichment Activities

### Framingham Public Library

#### Main Branch

49 Lexington St., Framingham..... 508-532-5570

#### McAuliffe Branch

746 Water St., Framingham ..... 508-532-5636

[www.framinghamlibrary.org](http://www.framinghamlibrary.org)

### Loring Skating Arena

165 Fountain St., Framingham..... 508-620-4877

[www.framingham.gov/974/Loring-Arena](http://www.framingham.gov/974/Loring-Arena)

Public ice skating, lessons and leagues September - April.

### MetroWest YMCA

280 Old Connecticut Path, Framingham ..... 508-879-4420

[www.metrowestymca.org](http://www.metrowestymca.org)

Pool, fitness center, sports classes, child care & preschool programs, school vacation & summer camps.

### N.E. Wild Flower Society – Garden in the Woods

180 Hemenway Rd., Framingham..... 508-877-7630

[www.newenglandwild.org](http://www.newenglandwild.org)

45 acre botanical garden operated by the New England Wild Flower Society. Classes offered.

### Performing Arts Center of MetroWest

3 Maple St., Framingham..... 508-875-5554

[www.pacmetrowest.org](http://www.pacmetrowest.org)

Private and group lessons for instruments, voice; group classes in dance and drama. All ages.

### Suburban Child

10 Roxanna St., Framingham..... 508-879-6544

[www.suburbanchild.org](http://www.suburbanchild.org)

Pool, child care & preschool programs, school vacation & summer camps.



**Framingham**  
**PUBLIC LIBRARY**  
Look here first.



# Outdoor Adventures & Sport Programs

## Town & Skate Parks

### Callahan State Park

Millwood Street across from golf course. Walking and hiking. Dogs & horses allowed. Cross country skiing.

### Farm Pond

Dudley Rd., Framingham  
Walking trails, fishing, non-powered boats, and group outings.

### Tercentennial Park

Dudley Rd., Framingham

### Carol Getchell Trail

Walking trail (1/2 mile) behind Stapleton School along Sudbury River. Enter at Sudbury Landing (by Old Danforth St. Bridge) behind school or end of Little Farms Rd

### Macomber

Conservation area located on Badger Road.

### Wittenborg Woods

Conservation area. Wayside Inn Road

### Cushing Memorial Park

Dudley Rd., Framingham  
Walking, public restrooms, and playground equipment.

### Nobscot Boy Scout Reservation

Edgell Road on the Sudbury Town line. Hiking.

### Roosevelt Park

Fay Rd., Framingham



## Beaches

Framingham has three public beaches with day passes. Season passes and swim lessons available through the Framingham Parks & Recreation Department.

### Learned Beach

Learned Pond at Lower Shawmut Terrace (off Prindiville Ave).

### Saxonville Beach

Lake Cochituate at Lake Road (off Old Connecticut Path, near Wayland town line).

### Waushakum Beach

Waushakum Pond at Nipmuc Road (off Winthrop St, near Rt. 126 and Ashland town line).

## Sports

Check web links on Framingham Parks & Recreation/ Other Groups/ Youth Groups website.

**Bay Path Figure Skating Club** ..... 508-877-2662

Tots - Adults Programs

**Framingham United Soccer Club** ..... [www.fsuc.org](http://www.fsuc.org)

Ages 6 & up

**Framingham Youth Lacrosse** ..... [www.framinghamyouthlacrosse.org](http://www.framinghamyouthlacrosse.org)

Ages 6 & up

**Girls Softball** ..... 508-405-1716

For grades 4 and older.

### Youth Hockey

All levels up to 16 years of age. Beginners ages 5-9.

# Sports, Fields, Playgrounds

The following fields are for public use for school, league sports, or other scheduled events.

## **Anna Murphy**

Cove St. and Lake Ave.  
Playground, (2) Tennis Courts,  
Baseball (Little League)

## **Apple Street Playground**

Bethany Rd.  
Playground

## **Arlington Street Playground**

Arlington St. and Gordon St.  
Playground

## **Bates Road**

Off Hollis St.  
Playground

## **Barbieri School**

Dudley Rd.  
Playground

## **Brophy School**

Pleasant St.  
Playground, Soccer

## **Bowditch Field**

Union Ave.  
Playground, Lighted  
Baseball, (4) Lighted Tennis  
Courts, Lighted Football,  
Lighted Outdoor Basketball, 3/4  
Mile Jogging Area, Track, Fitness  
Course with (20) Exercise  
Stations, Stadium Seating

## **Butterworth Park**

Grant St. and Bishop St.  
Playground, (4) Lighted Tennis  
Courts

## **Cameron School**

Elm Street  
Soccer

## **Carter**

Dudley Rd. (in Long's Field  
Complex)  
Baseball (Little League)

## **Charlotte Dunning School**

Frost St.  
Playground

## **Cushing Memorial Park**

Dudley Rd.  
Playground

## **Danforth Park**

Danforth St.  
Playground

## **Furber**

Fairbanks Rd.  
Playground, Baseball  
(Little League)

## **Harmony Grove School**

Beaver St. and Leland St.  
Playground

## **Hemenway School**

Water St.  
Playground

## **Juniper Hill School**

Upper Jocelyn Rd.  
Playground

## **King School**

Water St.  
Playground

## **Long's Complex**

Dudley Rd. (next to Keefe Tech)  
Lighted Softball, Lighted Base-  
ball Little League, Outdoor  
Lighted Basketball, Football,  
Soccer

## **Mary Dennison Park**

Beaver St.  
(2) Softball Fields (one lighted),  
Baseball, Football, Soccer,  
(2) Outdoor Basketball Courts,  
Playground

## **Mason Park**

Maple St. and Franklin St.  
Playground

## **McCarthy School**

Flagg Drive  
Playground

## **Merloni**

Fountain St. (in Long's Field  
Complex)  
Baseball (Little League)

## **Mt. Wayte**

Chautauqua Ave.  
Playground

## **Musterfield**

Guadalcanal Road  
Soccer

## **Oakvale**

Burbank Cir., off Hadley Rd.  
Playground, Baseball  
(Little League)

## **Potter Road School**

Potter Rd.  
Playground, Baseball  
(Little League)

## **Reardon Park**

Brownlea Rd., off Old Conn.  
Path  
Playground, Baseball  
(Little League)

# Sports, Fields, Playgrounds

The following fields are for public use for school, league sports, or other scheduled events.

## South Field

Guadalcanal Rd. (at end)  
Softball, Soccer, Lacrosse

## Stapleton School

Elm St.  
Playground

## Temple Street Playground

Temple St.  
Playground

## Tusoni

Dudley Rd. (in Long's Field  
Complex)  
Baseball (Little League)

## Victory Field

Auburn St.  
Home of Framingham  
United Soccer Club

## Walsh Middle School

Brook St.  
Playground, (4) Lighted Tennis  
Courts

## Winch Park

"A" St.  
Playground, (6) Lighted Tennis  
Courts, Baseball, Softball, Foot-  
ball, Soccer, Outdoor Lighted  
Basketball

## Woodfield

Sloane Dr. and Gregory Rd.  
Playground



Make sure to follow, like, or subscribe to all of our social media pages!



@earlychildhoodallianceofframingham



@strongstart16



@janececaf



Early Childhood Alliance of Framingham

# Ready-For-School Checklist

The following checklist, although not exhaustive, can help to guide you as you prepare your child for school. It's best to look at the items on the list as goals toward which to aim. They should be accomplished, as much as possible, through everyday routines or by enjoyable activities that you've planned with your child. If your child lags behind in some areas, don't worry. Remember that children grow and develop at different rates.

## Good Health and Physical Well-Being

### My child:

- Eats a balanced diet.
- Gets plenty of rest.
- Receives regular medical and dental care.
- Has had all the necessary immunizations.
- Runs, jumps, plays outdoors and does other activities that help develop his/her large muscles and provide exercise.
- Does puzzles, scribbles, colors, paints and does other activities that help develop his/her small muscles.

## Social and Emotional Preparation

### My child:

- Is learning to explore and try new things.
- Is learning to work well alone and to do many tasks for him/herself.
- Has many opportunities to be with other children and is learning to cooperate with them.
- Is curious and is motivated to learn.
- Is learning to finish tasks.
- Is learning to use self-control.
- Can follow simple instructions.
- Helps with family chores.

## Language and General Knowledge

### My child:

- Has many opportunities to talk and listen.
- Is read to every day.
- Has access to books and other reading materials.
- Is learning about print and books.
- Has his television viewing monitored by an adult.
- Is encouraged to ask questions.
- Is encouraged to solve problems.
- Has opportunities to notice similarities and differences .
- Is encouraged to sort and classify things.
- Is learning to write his/her name and address.
- Is learning to count and plays counting games.
- Is learning to identify and name shapes and colors.
- Has opportunities to draw, listen to and make music and to dance.
- Has opportunities to get first-hand experiences to do things in the world - to see and touch objects, hear new sounds, smell and taste foods and watch things move.

# For The Record

Fill in YOUR child's information and post in a handy location:

Child's Bus Number/Route: \_\_\_\_\_

Bus Stop: \_\_\_\_\_

**Transportation Office: 508-626-9179**

Child's School: \_\_\_\_\_

School Address: \_\_\_\_\_

Classroom Number: \_\_\_\_\_

Classroom Teacher's Name: \_\_\_\_\_

School Office Number: (508)- \_\_\_\_\_

Absentee Line: (508)- \_\_\_\_\_

School Nurse: (508)- \_\_\_\_\_

Teacher Contact Information: \_\_\_\_\_

Parent-Teacher Conference Appointments: \_\_\_\_\_

Fall- \_\_\_\_\_

Spring- \_\_\_\_\_

"Specials" Schedule: (don't forget sneakers on gym day!)

\_\_\_\_\_  
\_\_\_\_\_  
\_\_\_\_\_

Other Notes:

Early Release Days: \_\_\_\_\_

\_\_\_\_\_  
School Events: \_\_\_\_\_

\_\_\_\_\_  
Celebrations: \_\_\_\_\_

\_\_\_\_\_  
PTO Meetings: \_\_\_\_\_

\_\_\_\_\_  
Other: \_\_\_\_\_

\_\_\_\_\_  
Other: \_\_\_\_\_

Be sure to notify the school of any changes in home, work and cell, telephone numbers, addresses and email, so the school can reach you in an emergency.





# EARLY CHILDHOOD ALLIANCE

Uniting for Young Children...the Heart of our Community  
Framingham, MA

## Your One Stop Shop for Strengthening Families

### By Providing Access To:

1. Signature Play, Learn, and, Grow Together Groups
  2. Internationally Recognized ParentChild+ Home Visitation Program  
(For eligible families with children age 18 to 36 months old)
  3. Family Education & Support
  4. Resource & Referral Services
  5. Resource Guide for Early Education
  6. Transition Support
  7. Family & Community Leadership Opportunities
- And More!**

Contact us at 508-782-6932 or  
[jcohen@framingham.k12.ma.us](mailto:jcohen@framingham.k12.ma.us)

<http://www.framingham.k12.ma.us/Domain/72>





# EARLY CHILDHOOD ALLIANCE

Uniting for Young Children...the Heart of our Community  
Framingham, MA

If you are a parent of a child 0-5 years old, and live in Framingham, you are welcome to attend our FREE PLAYGROUPS that are open to ALL Framingham residents. All groups require a parent or caregiver to participate. Our structured play-based groups are designed for parents and children to Play, Learn, and Grow Together. We have groups for mixed ages (0-5) and groups specifically designed for children 3-5 years old, baby groups, parent chats, and other special events. We are also available to help refer you to early childhood resources in the community.

You may also be eligible for the ParentChild Plus (formerly the Parent-Child Home Program). This program is for Framingham residents only. The program provides a home visitor that comes to your home twice a week with a gift of free educational books and toys for your child. Contact us to find out if you and your child are eligible.

Fill out the form below to receive more information about any of our programs. Return it to the agency that provided this form, or, to the Early Childhood Alliance office, located at 19 Flagg Drive.

Contact Jane at 508-782-6932 or [jcohen@framingham.k12.ma.us](mailto:jcohen@framingham.k12.ma.us)  
<http://www.framingham.k12.ma.us/domain/72>

---

Parent Name (s): \_\_\_\_\_

Address: \_\_\_\_\_

Email Address: \_\_\_\_\_

Phone Number: \_\_\_\_\_

Child's Name: \_\_\_\_\_

Child's Date of Birth: \_\_\_\_\_

Language (s) Spoken at Home: \_\_\_\_\_

Referral Source: \_\_\_\_\_

Check all areas of interest:

Home Visits    Groups    Childcare / Preschool    Other Community Resources

**Special thanks to our collaborating  
partners that include:  
Framingham Public Schools, Framingham Public Library,  
early childhood program providers and educators,  
community agencies, advocacy  
organizations and families!**



**2022 Edition**

The Early Childhood Alliance of Framingham does not endorse any one program. Our purpose is to provide educational and resource information only. For a comprehensive listing of programs go to:  
[www.eeclead.force.com/EEC\\_ChildCareSearch](http://www.eeclead.force.com/EEC_ChildCareSearch)

### **NONDISCRIMINATION POLICY STATEMENT**

The Framingham Public Schools do not discriminate based on race, color, age, gender, sexual orientation, religion, ethnic or national origin, disability, veteran's status, or any other protected by law. Any concern related to the implementation of this policy may be addressed directly to the building Principal or the Superintendent of Schools (508-626-9117). The Boston Office of the Massachusetts Commission Against Discrimination is located at  
One Ashburton Place, Boston, Ma 02108.

**Revised 12/2022**

Translated by the Early Childhood Alliance of Framingham/Framingham Public Schools



**EARLY CHILDHOOD ALLIANCE**  
Uniting for Young Children...the Heart of our Community  
Framingham, MA