

# Drinking Water Best Management Practices

For Schools and Child Care Facilities Served by  
Municipal Water Systems



# Drinking Water Best Management Practices

## For Schools and Child Care Facilities Served by Municipal Water Systems

This guide is intended for use by school officials and child care providers responsible for the maintenance and/or safety of school and child care facilities including the drinking water. The purpose of this guide is to describe the importance of implementing best management practices for drinking water in schools and child care facilities and how a school or child care facility would go about implementing these practices. This guide is specifically for schools and child care facilities that receive water from water utilities or water suppliers such as cities, towns and water districts. This guide is not a regulation itself, nor does it change or substitute for those provisions and regulations. Thus, it does not impose legally binding requirements on EPA, states, municipal water systems, schools or child care facilities. This guide does not confer legal rights or impose legal obligations upon any member of the public. While EPA has made every effort to ensure the accuracy of the information in this guide the obligations of the regulated community are determined by statutes, regulations or other legally binding requirements. In the event of a conflict between the information in this guide and any statute or regulation, this document would not be controlling.

### Table of Contents

<b>What Decision Makers Should Know</b> .....	1
Bacteria.....	2
Lead .....	2
Copper .....	4
<b>Drinking Water Best Management Practices</b> .....	5
Bacteria.....	5
Lead .....	7
Additional Considerations.....	12
<b>Resources</b> .....	14
<b>State Drinking Water and Lead Prevention Information Sources</b> .....	14
<b>Glossary</b> .....	15

# What Decision Makers Should Know

On any given day in America nearly 50 million public school students spend a significant portion of their day in school buildings. Exposure to environmental hazards in schools can negatively impact the health of children and school staff. Moreover, studies have shown that poor indoor environments in schools have negative impacts on teacher productivity and student performance.<sup>1,2,3</sup>

Schools and child care facilities receive their drinking water from nearby municipal water systems or their own on-site water system. Facilities that receive their water from a water provider can be assured that the water is regularly tested to ensure it meets federal and state drinking water standards, such as for bacteria and chemicals.

Even if the water meets federal and state standards at the municipal water supply, the water pipes and plumbing fixtures in your facility can affect the quality of water. Therefore, it is important to perform routine measures to limit bacteria or lead contamination and to implement other best management practices for drinking water to ensure your school or child care facility is providing safe drinking water to students and staff.

<sup>1</sup> Vinciullo F. The relationship between multi-component school health programs and school achievement. Paper presented at: Annual Conference of the National Association of School Nurses, 2008; Albuquerque, NM.

<sup>2</sup> Stolz A, Knickelbein, A., Coburn, S. Linking coordinated school health to student success. Paper presented at: Annual Conference of the National Association of School Nurses, 2008; Albuquerque, NM.

<sup>3</sup> NRC (National Research Council). Green Schools: Attributes for Health and Learning. Washington D.C.: The National Academies; 2006.

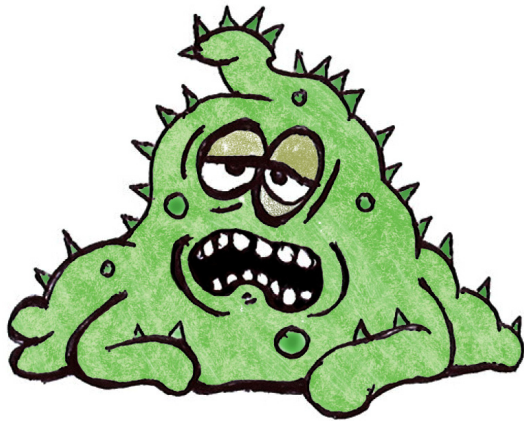
This guide identifies best management practices for drinking water in schools and child care facilities that are served by municipal drinking water systems to address the following issues:

- Bacteria that may grow within the plumbing system and hot water tanks, on water fountains and faucets, or enter the facility's distribution system (the building's pipes and plumbing) through cross connections;
- Elevated lead levels as a result of contamination from the facility's plumbing and drinking water fixtures; and
- Additional measures such as water conservation and educating students about drinking water.

## Top Five Actions to Protect Drinking Water at Schools and Child Care Facilities

1. Clean drinking water fountains daily using procedures found in this guide.
2. Clean debris out of all outlet screens or aerators on a regular basis using the procedures found in this guide.
3. Test the facility's drinking water for lead. If lead is present, follow the actions for addressing lead contamination outlined in this guide.
4. Evaluate your facility for the presence of cross-connections and address any issues related to cross-connections by following the recommendations found in this guide.
5. If elevated lead levels are found, regularly flush all water outlets used for drinking or food preparation and install point-of-use devices, to provide additional treatment of drinking water at the outlet.

## Bacteria



Bacteria are present throughout our environment. They have adapted to live and reproduce in a variety of environments, including inside animals and humans, and in water, soil and food. If harmful bacteria are present in drinking water sources, most are removed during the disinfection process. However, some may survive and enter the distribution system (the building's pipes and plumbing). Bacteria can also grow within the plumbing system, water fountains and faucets. Therefore, it is important to regularly clean your facility's water fountains, faucets and hot water tanks.

## Lead

### Understanding Lead Exposure

School officials and child care providers need to know whether the students, teachers and staff consume elevated levels of lead when drinking water in their facility, because exposure to lead can cause serious health problems, particularly for young children.

Lead in drinking water is primarily from materials and components associated with service lines and facility plumbing. Your municipal water supplier is responsible for providing high quality drinking water, but cannot control the variety of materials contained in the plumbing components used within your facility.

### Health Effects of Lead

Lead can cause serious health problems if too much enters your body from drinking water or other sources. Some facts about lead exposure include:

- Infants, young children and pregnant women are at greatest risk to lead exposure;
- Increased lead levels have been shown to cause damage to the brain and kidneys;
- Increased lead levels interfere with the production of red blood cells that carry oxygen to all parts of your body;

### Reduction of Lead in Drinking Water Act

A new requirement, signed into law by President Obama in January 2011, will further reduce lead in pipes, pipe fittings, plumbing fittings and fixtures to a weighted average of 0.25 percent. The Reduction of Lead in Drinking Water Act redefines "lead free" under the Safe Drinking Water Act to mean: not containing more than 0.2 percent lead when used with respect to solder and flux, the material used to join pipes and fixtures together (current law) and not more than a weighted average of 0.25 percent lead when used with respect to the wetted surfaces of pipes, pipe fittings, plumbing fittings and fixtures. The new requirements will become effective in January 2014.

- Scientists have linked the effects of lead on the brain with lowered intelligence quotient (IQ) in children;
- Adults with kidney problems and high blood pressure can be affected by lower levels of lead more than healthy adults;
- Lead is stored in the bones and it can be released later in life; and
- During pregnancy, the fetus receives lead from the mother's bones which may affect brain development.



*Example of lead pipes in a plumbing system.*

## How Lead Gets into Drinking Water

Soft water has a low pH, which is corrosive. Other factors however also contribute to the corrosion potential of the water and include water velocity, temperature, alkalinity, the type of disinfectant, the age and condition of plumbing and the amount of time water is in contact with plumbing. Of note, recent construction work on your facility's plumbing system (e.g., pipe replacement and utility lead service line replacement with copper components) may result in corrosion of remaining lead pipes or disturbance of settled debris within larger pipes in the system which may create new sources of contamination. The occurrence and rate of corrosion depend on the complex interaction between a number of these and other chemical, physical and biological factors.

Municipal water systems take steps to reduce the corrosiveness of the water. However, if the plumbing in your facility is made of lead or contains lead parts, corrosion may occur as the water moves through your facility's plumbing.

## Potential Sources of Lead in Drinking Water

- Lead pipes in plumbing:
  - Dull gray in color and will appear shiny when scratched
  - Banned since 1986 and not widely used since the 1930s
- Copper pipes joined by lead solder:
  - Solder will be dull gray in color and will appear shiny when scratched
  - Banned since 1986 and many communities banned prior to 1986
- Brass pipes, faucets, fittings and valves:
  - May contain alloys of lead
- Sediments in screens on faucets:
  - Debris from plumbing can collect on screens and may contain lead
- Water service line to facility is made of lead:
  - Pipes that carry water from the municipal water system main to the facility may contain lead
- Water fountains in the facility may contain lead parts:
  - Specific brands of water fountains contain lead parts or have lead lined water tanks
  - Since 1988 it has been mandated that water fountains be lead free but older facilities may have outdated models



*Copper pipes joined by lead solder.*

## Copper

Copper is widely used in household plumbing, sometimes without proper consideration of water quality. Excess copper exposure can cause stomach and intestinal distress, liver or kidney damage and complications of Wilson's disease. Children's bodies absorb more lead

and copper than the average adult because of their rapid development. Copper leaches into water through corrosion of the plumbing system – primarily from pipes, but fixtures, faucets and fittings made of brass can also be a source. The amount of copper in your water strongly depends on the acidity and types and amounts of minerals in the water, whether or not it is oxygenated or disinfected, how long the water stays in the pipes, the length of time the pipes have been in use and the water's temperature. Especially when the water pH is below neutral (7) and when the alkalinity of the water (bicarbonate content) is high, very high concentrations of copper can persist for many years in copper pipes and fittings found in new construction and remodeled or renovated buildings. Blue staining of water, sinks and fixtures can be an indicator of extreme copper plumbing corrosion.



# Drinking Water Best Management Practices

## Bacteria

### Drinking Water Fountains

Drinking water fountains should be cleaned on a daily basis to reduce possible bacterial contamination. Fountains should also be included in the regular flushing of the facility's plumbing system (as described in the section Routine Measures for Reducing Lead Exposure).

#### Drinking Water Fountain Daily Cleaning Procedures<sup>1</sup>

The following procedures should be considered for daily cleaning:

- Gather necessary materials and suggested protective equipment;
- Obtain Material Safety Data Sheets (MSDS) for all chemicals being used and review manufacturer's instructions for use;
- Check the flow of the water to make sure there is a constant stream;
- Spray disinfectant cleaner solution on the inside surfaces of the mouthpiece and protective guard;
- Using a scrub brush, clean the inside and outside of the mouthpiece and protective guard;
- Rinse the mouthpiece and protective guard with water; and
- Wipe drinking fountain surfaces with a clean cloth dampened with water.

It is also important to clean drinking water fountains to remove lime and calcium build-up. Lime and calcium build-up can begin to block

<sup>1</sup> Iowa State University Facilities Planning & Management – Custodial Task Procedures



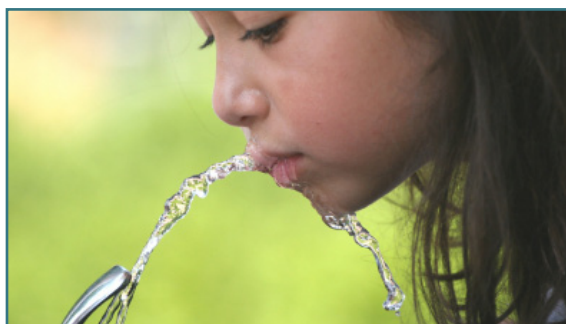
*Lime build-up on mouthpiece and protective guard of drinking fountain.*

the water from coming through the mouthpiece and going down the drain.

#### Removing Lime Build-up on Drinking Fountains or Ice Machines

- Spray descaler onto the bowl and back of the drinking fountain;
- Use a clean, lint-free cloth saturated with the descaler. Apply to the surfaces with the lime build-up. Let stand for the length of time recommended on the label;
- Wring out all excess solution from the cloth;
- Wipe the surface clean with the cloth. If necessary, use a brush or scrub pad to remove hard build-up. Be careful not to damage surfaces while scrubbing; and
- Thoroughly rinse the surfaces with clean water.

For a list of EPA-approved disinfectants to use in your facility, please visit: <http://www.epa.gov/oppad001/chemregindex.htm>



## Hot Water Tanks

Hot water tanks are susceptible to the development of biofilm, which is a surface deposit of bacteria that accumulates creating a slime layer. Similar to the plaque that forms on teeth biofilms accumulate over time. It is recommended that you consult with an experienced professional to have your hot water tank periodically cleaned to remove existing biofilms and sediments.<sup>2</sup>



*A cross connection between a dishwasher drain (copper pipe) and a main pipe.*

## Cross Connections

A cross connection is an actual or potential connection between your facility's drinking water system and other liquids or substances. It is important to be aware of cross connections within your facility, as contamination can occur. Cross contamination from backflow of harmful substances may occur as a result of reduced pressure in the drinking water system or because of increased pressure in the contaminating source. Be aware, cross contamination may not be immediately apparent because a contaminant may not have a strong taste, odor or color.

<sup>2</sup> National Environmental Services Center, Tech Brief. Biofilm Control in Distribution Systems, Summer 2008, Vol. 8, Issue 2.

Boil water orders are issued by your municipal water system when elevated levels of bacteria and viruses are a concern. However, boiling water does not reduce lead levels in drinking water. Because some of the water evaporates during the boiling process, the lead concentration of the water actually increases as the water is heated. Hot tap water also dissolves lead more readily than cold tap water. If you are concerned about lead levels in your water and your municipal water system issues a boil water alert for reducing bacteria or viruses, you should find alternate sources of drinking water until the alert is over.

Cross contamination can happen at facilities under a number of circumstances, including:

- When a tube or hose from a faucet is submerged in a solution, beaker or custodian's sink;
- A pipe is connected from a drinking water source to chemical lab equipment, a storage tank or cafeteria equipment; or
- A hose is dropped into a waste/floor drain in an automotive shop, boiler room or cafeteria.



*A garden hose creates a dangerous cross connection between potable and non-potable water.*



Other sources of potential cross contamination include cross connections between the drinking water system and heating system boilers, water coolers, lawn sprinkler systems, fire sprinkler systems or soft drink machines.

Cross contamination can be prevented by using backflow prevention devices that only allow water to flow in one direction, from the source to the tap, so liquid cannot flow back down the tap and contaminate the water in the distribution system. Backflow prevention devices should be tested annually. If you have questions about cross connections and contamination, contact the local building/plumbing inspector or for more information on cross contamination please visit: <http://water.epa.gov/infrastructure/drinkingwater/pws/crossconnectioncontrol/index.cfm>.

Lastly, inspect your facility's pipes to make sure there are no leaks or outside indications of corrosion. Leaks in your plumbing system can be a way for bacteria to get into your water.

## Lead

### Voluntary Testing of Lead in Drinking Water

You cannot see, taste or smell lead in your drinking water. As such, testing the facility's water is the only sure way to know if there are elevated levels of lead in the water.

EPA developed the 3Ts for Reducing Lead in Drinking Water in Schools, Revised Technical Guidance (Training, Testing and Telling) to help schools and child care facilities implement simple strategies for managing the health risks of lead in drinking water. The 3Ts include:



*Lead exposure poses a great risk to young children.*

- **Training** school and child care facility officials to raise awareness of the potential occurrences, causes and health effects of lead in drinking water, assist facilities in identifying potential areas where elevated lead may occur, and establish a testing plan to identify and prioritize testing sites;
- **Testing** drinking water in the facility to identify potential problems and take corrective actions as necessary; and
- **Telling** students, parents, staff and the larger community about monitoring programs, potential risks, the results of testing and remediation actions.

The 3Ts for Reducing Lead in Drinking Water in Child Care Facilities is available at: <http://water.epa.gov/infrastructure/drinkingwater/schools/guidance.cfm#3ts>

EPA also developed the, “What Your School or Child Care Facility Should Know About Lead in Drinking Water” DVD available for order from the National Service Center for Environmental Publications (NSCEP) at: <http://water.epa.gov/infrastructure/drinkingwater/schools/guidance.cfm><sup>3</sup>

## Test the Facility’s Drinking Water for Lead



It is important to test all of the drinking water outlets in your facility, especially those that provide water for drinking, cooking and preparing juice and infant formula. Lead in drinking water can be a very localized problem and can vary from tap to tap. Just because there is lead getting into your water from one outlet does not mean that all your taps are vulnerable or contaminated. At the same time, just because one tap sample is free from lead does not mean that all your taps are clear. It is a good idea to test ALL outlets including drinking fountains and water faucets where water will be used for drinking or cooking. Unusual sources of drinking water, such as locker room shower heads and other non-drinking water taps used to fill water jugs and carboys, should also be included when tested for lead.

If your sink has separate hot and cold water knobs then samples should be collected from cold water as hot tap water is not recommended for food preparation or direct consumption. If

<sup>3</sup> Also available by calling NSCEP at 1-800-490-9198. For International Orders: Call NSCEP at (301) 519-6640 or e-mail NSCEP at [nscep@bps-lmit.com](mailto:nscep@bps-lmit.com)

you have one lever, be sure to turn it on to the cold water side. The 3Ts for Reducing Lead in Drinking Water in Schools, Revised Technical Guidance, provides step-by-step guidance on how to properly collect samples and test your facility’s drinking water outlets for lead.<sup>4</sup>

The concentration of lead in your drinking water samples will be reported in metric form, such as milligrams per liter (mg/L) or micrograms per liter (µg/L), or as parts per million (ppm) or parts per billion (ppb).

EPA recommends that schools and child care facilities take action if samples from any drinking water outlets show lead levels greater than 20 parts per billion.

## Routine Measures for Reducing Lead Exposure

Whether you have tested your water or not, or even if you have and your water has shown low levels of lead, there are best practices that will further reduce the potential for lead exposure at your facility as well as reduce sediment in your water.

### Develop a flushing plan

- Determine how water enters and flows through your facility by developing a plumbing profile.<sup>5</sup> Consult with your maintenance personnel, licensed plumber or local water service provider to develop a plumbing profile;
- Locate all water outlets that are used for consumption;

<sup>4</sup> See Section II: Testing of the 3Ts for Reducing Lead in Drinking Water in Schools, Revised Technical Guidance, available at: <http://water.epa.gov/infrastructure/drinkingwater/schools/guidance.cfm#3ts>

<sup>5</sup> See Section II: Testing of the 3Ts for Reducing Lead in Drinking Water in Schools, Revised Technical Guidance, available at: <http://water.epa.gov/infrastructure/drinkingwater/schools/guidance.cfm#3ts>

- Identify the drinking water outlet(s) farthest from the main water service line (Note: If your facility has multiple wings there will be more than one outlet farthest from the main service line);
- Determine the best order to open and flush drinking water outlets, starting with those farthest from the main service line;
- Identify options for collection and non-potable re-use of flushed water (e.g., plant watering); and
- Develop a system for accountability, including identifying one person who is in charge and developing a record keeping system.

### Flush all water outlets used for drinking or food preparation

- At the start of each day, before using any water for drinking or cooking, flush the cold water faucet by allowing the water to run for a period of time. Contact your municipal water system to find out what the recommended flushing time is for your facility based on your system size and piping. This should be done for all water outlets used for drinking or food preparation.
- Flushing, or opening up a tap and letting the water run, replaces the stagnant water that may have been in contact with lead-containing plumbing fixtures overnight or over the weekend. The longer water is exposed to lead pipes or solder the greater the likelihood of lead contamination.
- Flushing times vary depending on your buildings pipes and outlets, refrigerated water fountains can take as long as 15 minutes to properly flush out the reservoir.
- If many taps need flushing, the tap farthest from the main pipe should be opened for approximately ten minutes to flush out the main pipe. Then, individual drinking water taps should be flushed to rid stagnant water from the pipes. Keep in mind that if your facility has more than one wing there may be

more than one tap that is furthest from the water line.<sup>6</sup>

### Use only cold water to prepare food and drinks

- Hot water dissolves lead more quickly than cold water and is therefore more likely to have greater amounts of lead.
- If hot water is needed, water should be drawn from the cold tap and heated.
- Use only thoroughly flushed water from the cold water tap for drinking and when making mixed baby formula, juices or foods.

### Clean debris out of all outlet screens or aerators on a regular basis

- Small screens on the end of a faucet can trap sediments containing lead. Note: Aerators are often used to regulate flow, reduce splash and conserve water. Check to see if your faucets have aerators, since not all faucets have them.



### Faucet Aerators

Many taps that are used to provide water for human consumption have an aerator as part of the faucet assembly. Aerators serve to introduce air into the water flow which makes it feel as if a larger water flow is coming out of the tap. The use of aerators is a common water conservation practice. Screens are not intended to remove contaminants in the water, but may trap sediment or debris as water passes through the faucet. Lead bearing sediment may end up in drinking water from physical corrosion of leaded solder and can build up in the aerator over time.

<sup>6</sup> Lead in School Drinking Water Program (<http://www.mass.gov/dep/water/drinking/sclcatlg.pdf>).

### Faucet Aerators Cleaning Procedures

- Remove the aerator by twisting off with hands or pliers;



- One or more parts are contained within the aerator. Note the order and orientation of the parts as you remove them;



- Rinse the pieces with water and brush off the debris. For deposits that are difficult to remove, soak the parts in water for a few minutes and scrub with a new toothbrush. Backwashing aerator components is also an effective cleaning method for many aerator types. Hold removed aerator upside down under flowing water to backwash screens and mesh filters;



- If any parts are cracked or broken, replace them. If the washer has hardened it should be replaced; and



- Reassemble the aerator by screwing it back onto the faucet and hand-tighten.

It is not recommended that aerators be removed from faucets immediately before sampling for lead as the sample will fail to identify the typical available contribution of particulate lead from that tap and thus additional actions needed to reduce exposure to lead in drinking water will fail to be taken.

However, if the results from the initial sample are above the action level, you can consider taking a second sample to determine whether particulate matter is the source of lead. For this sample, the aerator would be cleaned or removed prior to sampling so that the two samples could be compared.<sup>7</sup> It is advised that a regular cleaning schedule be established for aerators.

The frequency of cleaning depends on how quickly the debris builds up on the inside walls of the aerator. Generally, the aerator should be cleaned at least quarterly. If blockages from scale or particulate accumulation are noticed, the frequency should be increased to monthly. Flow pattern changes are an indication of buildup.

<sup>7</sup> EPA, Oct 2006. Memorandum: Management of Aerators during Collection of Tap Samples to Comply with the Lead and Copper Rule. Available at: [http://water.epa.gov/lawsregs/rulesregs/sdwa/lcr/upload/2006\\_10\\_27\\_lcrmr\\_memo\\_tapsamples-aerators\\_10202006.pdf](http://water.epa.gov/lawsregs/rulesregs/sdwa/lcr/upload/2006_10_27_lcrmr_memo_tapsamples-aerators_10202006.pdf).

### Follow-up lead monitoring

Water quality changes over time and it is important to make sure that the water in your facility remains free of lead. Periodic retesting of fixtures is recommended.

### Respond to Elevated Lead Levels

EPA recommends that schools and child care facilities take action if samples from drinking water outlets show lead levels greater than 20 ppb. Any outlet with test results above this level should not be used until the source of the contamination is found and the lead levels are reduced to 20 ppb or less. If you are going to stop using an outlet due to high lead levels you should place a physical barrier, such as tape or an illustrative sign over the faucet so that everyone knows it should not be used until it is fixed. In addition, you should encourage parents to have their children's blood tested for lead if high lead levels are detected in the water. Facilities should develop Standard Operating Procedures (SOPs) for responding to elevated lead levels and administrators or directors should be encouraged to communicate this information to parents (or the teachers) so they can protect their children. The following remedies can be used to respond to elevated lead levels:

#### Provide an alternative "lead-free" drinking water

- Bottled water can be used as a temporary measure; and
- Make sure the bottled water distributor meets federal and state bottled water quality standards (which are different than tap water) and that their filtration technology is National Sanitation Foundation International (NSF) certified for lead reduction (<http://www.nsf.org/>).

### Remove sources of lead in the plumbing system

These remedies are most appropriate for localized contamination problems and are best handled by a licensed plumber:

- Replace solder joints with lead-free joints;
- Replace the outlet or fixture/faucet with "lead-free" materials (according to NSF/American National Standards Institute (ANSI) Standards 61 and 372; or
- Replace piping with "lead-free" materials (according to NSF/ANSI Standards 61 and 372).

You can search for NSF Drinking Water System Components here: <http://www.nsf.org/certified/pwscomponents/>

Prior to replacing fixtures when elevated lead levels are determined, be sure to test the new fixtures to ensure the fixtures are "lead free." If you are purchasing a large volume of faucets ask the manufacturer or vender to test the faucets with your local tap water to make sure no lead is leached out of the faucets. If you are only purchasing a few faucets make sure the fixtures are certified as lead-free according to NSF/ANSI Standard 61 for lead content.

### Install point-of-use treatment devices



*A faucett filtration system.*

- A point-of-use (POU) device is a filtration system that can be installed directly on a drinking water outlet.
- Use a device that is certified by NSF

International to remove lead.<sup>8</sup>

- Maintaining POU treatment devices is very important. Refer to the manufacturer's instructions for maintenance procedures. If not maintained properly, some treatment devices may increase lead and other contaminant levels.
- If using a POU device you should do follow up testing to make sure the water is still below the action level.
- With the use of a POU device, flushing is not necessary.
- If using POU devices on some faucets, but not all, make sure that faucets without a POU device are clearly labeled that they are not for drinking or cooking water.

### Communicate with Your Community about the Voluntary Lead Testing Program

It is important to communicate early and often about your testing plans, results and next steps. Telling parents and staff about your voluntary lead testing program will demonstrate your proactive commitment to protecting the health of your students and staff and build confidence in your facility's ability to provide a safe and healthy environment, whether or not elevated lead levels are found in your facility.

## Additional Considerations

### Copper

Testing for copper may be appropriate if your water is somewhat acidic (with a pH below 7) and when it is disinfected. Copper corrosion decreases steadily over time under normal water usage conditions, but elevated copper levels can persist for many years in new copper pipes. If you are experiencing blue staining of your water, sinks, bathtubs or showers or if there is growing blue encrustation on the fixtures, this may be an indicator of high copper levels, and you should have your water tested for both copper and lead. If you are experiencing elevated copper levels in the drinking water system, the easiest method for reducing exposure to copper is to flush the system to avoid drinking or cooking with water that has been in contact with the plumbing system for more than four hours. Particularly when first drawing water in the morning, flush the system by running the cold water faucet long enough to get fresh water from the main, which could vary from about two minutes to five or ten minutes, depending on the size and length of the pipes and the flow rate. Each faucet where water is drawn for drinking or cooking purposes should be flushed separately, starting with the faucet or outlet farthest from where the fresh water enters the building.

---

<sup>8</sup> The Lead and Copper Rule: Quick Reference Guide for Schools and Child Care Facilities that are Regulated Under the Safe Drinking Water Act, available at: [http://water.epa.gov/infrastructure/drinkingwater/schools/upload/2006\\_1\\_11\\_schools\\_lead\\_sqrg\\_lcr\\_schools.pdf](http://water.epa.gov/infrastructure/drinkingwater/schools/upload/2006_1_11_schools_lead_sqrg_lcr_schools.pdf).

## Water Conservation

Schools and child care facilities use large amounts of water every day for heating and cooling systems, restrooms, drinking water, cooking, locker rooms, cafeterias, laboratories and outdoor playing fields and lawns. Options to conserve water for these facilities include:

- Consider replacing old equipment such as dishwashers with energy and water saving devices;
- Repair water leaks and leaky toilets;
- Install aerators and automatic shut-off devices on faucets;
- Using low-flow shower heads and timer shut-off devices to reduce water use during showers;
- Installing timers on sprinklers;
- Installing toilet dams on older models;
- Replacing plants and grasses that require a lot of water with native sustainable vegetation; and
- Using rain barrels and teach the students about green roofs.

## WaterSense

The WaterSense program promotes water efficiency and enhancing the market for water-efficient products, programs and practices. Since the program's inception in 2006, WaterSense has helped consumers save a cumulative 46 billion gallons of water and \$343 million in water and sewer bills. For additional information, visit: <http://www.epa.gov/watersense/>

## Teaching Students about Drinking Water

There are a variety of ways to teach students about drinking water:

- Early science classes demonstrating the water cycle;
- Mathematics classes demonstrating supply and demand principles;

- History lessons discussing early settlement patterns near water sources and our nation's system of government, laws and regulations provide important knowledge for water resource decision-making.
- Involve students in the voluntary lead testing program to make it a teaching moment, ensuring that the students wear proper safety equipment and are not exposed to lead.

EPA has developed numerous resources and activities for students and teachers, including:

### Drinking Water in Schools and Child Care Facilities (EPA)

Provides multiple resources regarding lead in drinking water, including health information, an overview of laws and regulations and guidance. Website: <http://water.epa.gov/infrastructure/drinkingwater/schools/index.cfm>

### Kid's Stuff: Drinking Water and Ground Water (EPA)

Provides activities and materials for students and teachers for grades K-3, 4-8 and 9-12. Website: <http://water.epa.gov/learn/kids/drinkingwater/index.cfm>

### Water Science and Technology for Students and Educators (EPA)

Water-related activities and resources for students and teachers. Website: <http://water.epa.gov/learn/resources/index.cfm>

### That Magnificent Ground Water Connection (New England Interstate Water Pollution Control Commission in coordination with EPA)

Classroom activities for students demonstrating the many characteristics, uses and threats to ground water resources in New England. Available for grades K-6 and 7-12. Selected activities are available at: <http://www.epa.gov/region1/students/teacher/groundw.html>

## Resources

### 3Ts for Reducing Lead in Drinking Water in Schools

Provides detailed guidance for schools that receive their drinking water from municipal water supplies regarding training and testing for and communicating about lead in drinking water.

Website: <http://water.epa.gov/infrastructure/drinkingwater/schools/guidance.cfm#3ts>

### 3Ts for Reducing Lead in Drinking Water in Child Care Facilities

Provides detailed guidance for child care facilities that receive their drinking water for municipal water supplies regarding training and testing for and communicating about lead in drinking water.

Website: <http://water.epa.gov/infrastructure/drinkingwater/schools/guidance.cfm#3ts>

### EPA's Website on Lead

<http://www.epa.gov/lead/>

### EPA's Website on Lead in Drinking Water

<http://water.epa.gov/drink/info/lead/index.cfm>

### EPA's Website on Reducing Lead in Drinking Water in Schools and Day Care Centers

[http://water.epa.gov/drink/info/lead/schools\\_index.cfm](http://water.epa.gov/drink/info/lead/schools_index.cfm)

### Centers for Disease Control and Prevention's Website on Lead

<http://cdc.gov/lead/>

### National Lead Information Center Hotline:

(800) 424-LEAD

### EPA's Safe Drinking Water Hotline:

(800) 426-4791

### Are You Providing Safe Drinking Water at Your School or Child Care Facility?

For Schools and Child Care Facilities With Their Own Drinking Water Source

### Caring for Our Children: National Health and Safety Performance Standards Guidelines for Early Care and Education Programs, 3rd Edition (2011)

Provides national standards that represent the best evidence, expertise and experience in the country on quality health and safety practices and policies that should be followed in today's early care and education settings. Chapter 5 covers drinking water safety, lead testing and appropriate plumbing.

Website: <http://nrckids.org/CFOC3/index.html>

## State Drinking Water and Lead Prevention Information Sources

State drinking water programs can describe state-specific requirements and provide additional guidance materials for schools. For a complete list of State Drinking Water program contacts and lead prevention information sources, see:

### Implementing the Lead Public Education Provision of the Lead and Copper Rule for Non Transient, Non Community Water Systems, Appendix C:

<http://water.epa.gov/lawsregs/rulesregs/sdwa/lcr/upload/Implementing-the-Lead-Public-Education-Provisions-of-the-Lead-and-Copper-Rule-A-Guide-for-Non-Transient-Non-Community-Water-Systems.pdf>



**Implementing the Lead Public Education Provision of the Lead and Copper Rule for Community Water Systems, Appendix C:**  
<http://water.epa.gov/lawsregs/rulesregs/sdwa/lcr/upload/Implementing-the-Lead-Public-Education-Provisions-of-the-Lead-and-Copper-Rule-A-Guide-for-Community-Water-Systems.pdf>

## Glossary

### Acidic:

The condition of water or soil which contains a sufficient amount of acidic substances to lower the pH below 7.0.

### Action Level:

The level of lead or copper which, if exceeded, triggers treatment or other requirements that a water system must follow.

### Alkalinity:

The capacity of water to neutralize acids. This capacity is caused by the water's content of carbonate, bicarbonate, hydroxide and occasionally borate, silicate and phosphate. Alkalinity is expressed in milligrams per liter of equivalent calcium carbonate. Alkalinity is not the same as pH because water does not have to be strongly basic (high pH) to have a high alkalinity. Alkalinity is a measure of how much acid can be added to a liquid without causing a significant change in pH.

### Alloy:

A solution made of two or more elements, at least one of which is a metal.

### Backflow:

A reverse flow condition created by a difference in water pressures which causes water to flow back into the distribution pipes of a potable water supply from any source or sources other than an intended source.

### Backwashing:

The process of reversing the flow of water back through the filter media to remove the entrapped solids.

### Bacteria:

Microscopic living organisms usually consisting of a single cell. Bacteria can aid in pollution control by consuming or breaking down organic matter in sewage or by similarly acting on oil spills or other water pollutants. Some bacteria in soil, water or air may also cause human, animal and plant health problems.

### Contaminant:

Anything found in water (e.g., microorganisms, minerals, chemicals, radionuclides, etc.) which may be harmful to human health.

### Corrosion:

The gradual decomposition or destruction of a material by chemical action often due to an electrochemical reaction. Corrosion may be caused by: 1) stray current electrolysis, 2) galvanic corrosion caused by dissimilar metals or 3) differential concentration cells. Corrosion starts at the surface of a material and moves inward.

### Cross-Connection:

Any actual or potential connection between a drinking (potable) water system and an unapproved water supply or other source of contamination. For example, if you have a pump moving non-potable water and hook into the ground water system to supply water for the pump seal a cross-connection or mixing between the two water systems can occur. This mixing may lead to contamination of the drinking water.

### Descaler:

A solution used to remove and/or prevent limescale and fouling on water taps, kettles, coffeemakers, toilets and water pipes.

**Disinfectant:**

A chemical (commonly chlorine, chloramine or ozone) or physical process (e.g., ultraviolet light) that kills microorganisms such as bacteria, viruses and protozoa.

**Distribution System:**

A network of pipes leading from a treatment plant to customers' plumbing systems or the pipes and plumbing within a building that distribute water to all of the water outlets.

**Ground Water:**

The water that systems pump and treat from aquifers (natural reservoirs below the earth's surface).

**Lead Service Line:**

A service line made of lead which connects the water main to the building inlet and any lead pigtail, gooseneck or other fitting which is connected to such a lead line.

**Monitoring Program:**

Testing that water systems must perform to detect and measure contaminants. Specifically, measuring concentrations of certain substances within environmental media (e.g., drinking water) at regularly scheduled intervals.

**Municipal Water System:**

A network of pipes, pumps and storage and treatment facilities designed to deliver potable water to homes, schools, businesses and other users in a city or town.

**Non-Potable Water:**

Water that may contain objectionable pollution, contamination, minerals or infective agents and is considered unsafe and/or unpalatable for drinking.

**pH:**

A measurement of how acidic or basic a substance is. It ranges from 0 to 14. A pH of 7 is neutral. A pH less than 7 is acidic and a pH greater than 7 is basic.

**Point-of-Use Device:**

A treatment device applied to a single tap used for the purpose of reducing contaminants in drinking water at that one tap.

**Potable Water:**

Water that is safe and satisfactory for drinking and cooking.

**Remediation:**

Removal of pollution or contaminants from environmental media such as soil, ground water, sediment or surface water for the general protection of human health and the environment.

**Samples:**

The water that is analyzed for the presence of EPA-regulated drinking water contaminants. Depending on the regulation, EPA requires water systems and states to take samples from source water, from water leaving the treatment facility or from the taps of selected consumers.

**Soft Water:**

Water having a low concentration of polyvalent cations, such as calcium and magnesium ions. According to U.S. Geological Survey guidelines, soft water is water having a hardness (concentration of polyvalent cations) of 60 milligrams per liter or less.

**Solder:**

A metallic compound used to seal the joints between pipes. Until recently, most solder contained 50% lead. The use of lead solder containing more than 0.2% lead is now prohibited for pipes carrying potable water.

**Toilet Dam:**

A water-conservation device that is placed inside the tank portion of a toilet to reduce the amount of water the tank will hold by partitioning off part of the tank.