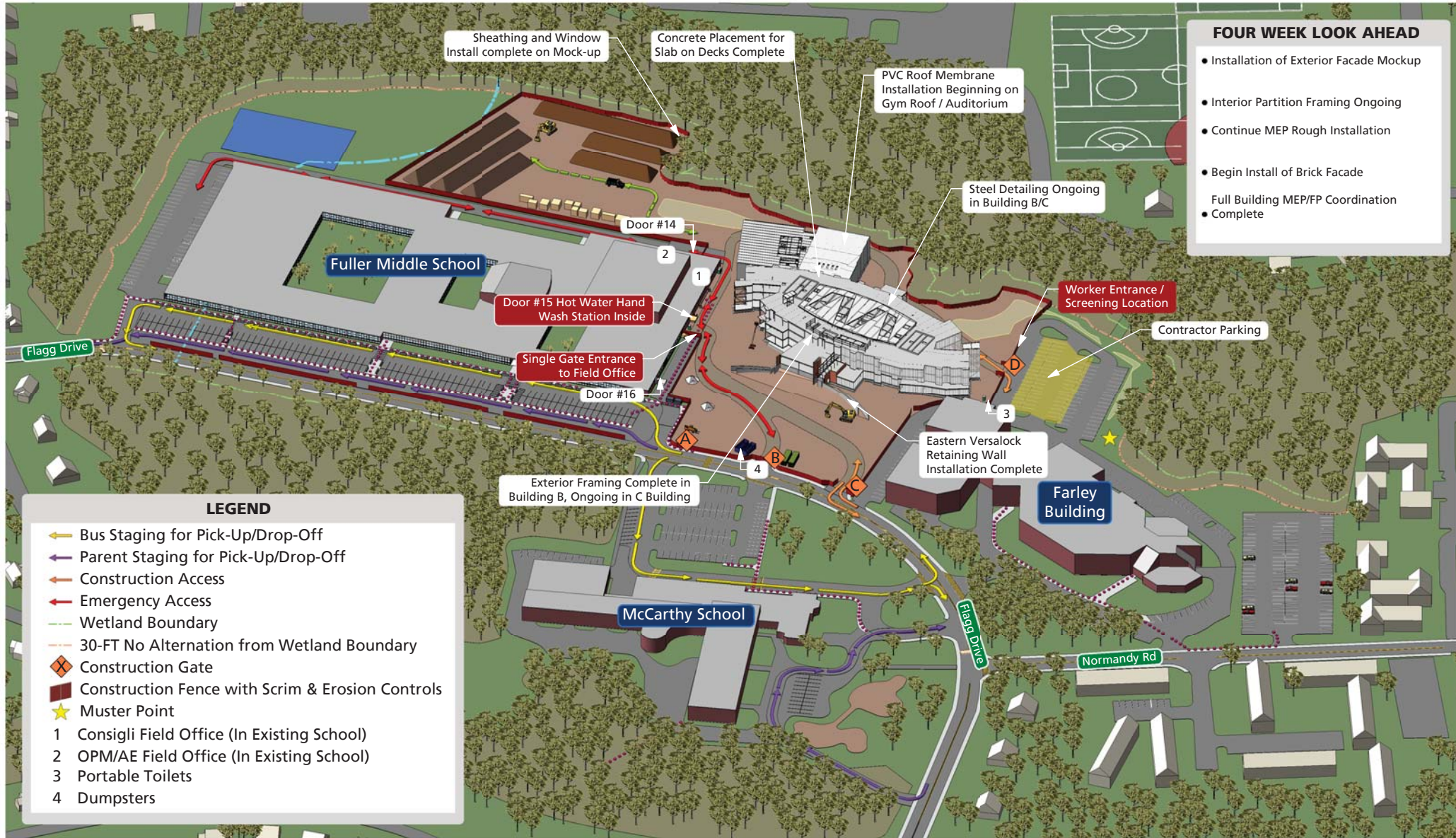


Fuller Middle School



August Project Updates



FOUR WEEK LOOK AHEAD

- Installation of Exterior Facade Mockup
- Interior Partition Framing Ongoing
- Continue MEP Rough Installation
- Begin Install of Brick Facade
- Full Building MEP/FP Coordination Complete

Sheathing and Window Install complete on Mock-up

Concrete Placement for Slab on Decks Complete

PVC Roof Membrane Installation Beginning on Gym Roof / Auditorium

Steel Detailing Ongoing in Building B/C

Worker Entrance / Screening Location

Contractor Parking

Exterior Framing Complete in Building B, Ongoing in C Building

Eastern Versalock Retaining Wall Installation Complete

Fuller Middle School

Farley Building

McCarthy School

Flagg Drive

Flagg Drive

Normandy Rd

Door #14

Door #15 Hot Water Hand Wash Station Inside

Single Gate Entrance to Field Office

Door #16

LEGEND

- ← Bus Staging for Pick-Up/Drop-Off
- ← Parent Staging for Pick-Up/Drop-Off
- ← Construction Access
- ← Emergency Access
- Wetland Boundary
- 30-FT No Alteration from Wetland Boundary
- ◆ Construction Gate
- Construction Fence with Scrim & Erosion Controls
- ★ Muster Point
- 1 Consigli Field Office (In Existing School)
- 2 OPM/AE Field Office (In Existing School)
- 3 Portable Toilets
- 4 Dumpsters

Consigli Owner Monthly Dashboard

August 2020

Fuller Middle School

31 Flagg Drive, Framingham, MA

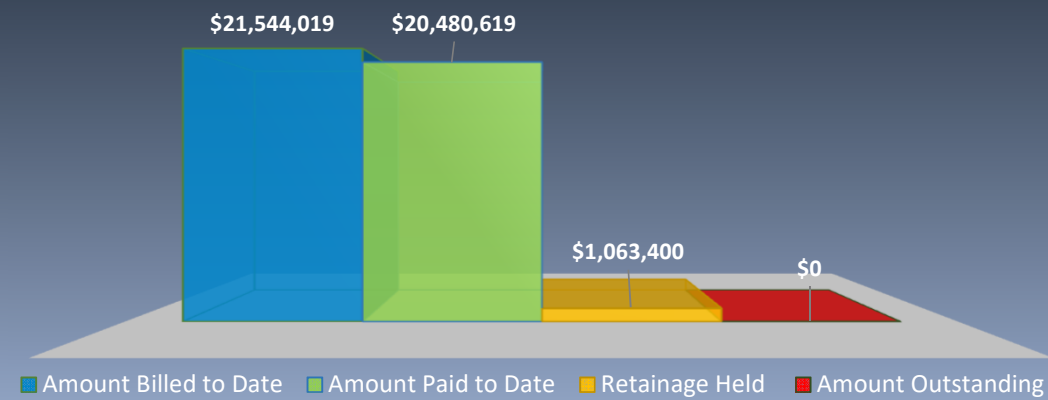


CONSIGLI
Est. 1905

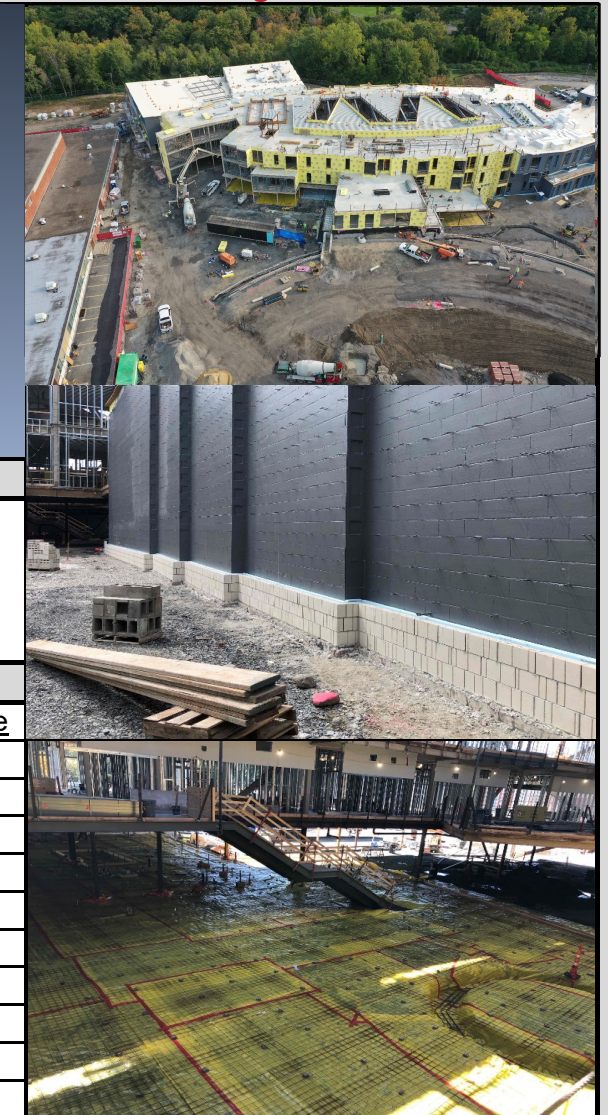
Executive Overview

- Gymnasium Roof Installation is complete. Auditorium and Building Area B roof work ongoing.
- Sheathing and AVB installation is ongoing into Building Area C
- Coordination efforts are substantially complete with 1st Floor Area A remaining
- All Concrete SOD placements have occurred. Auditorium SOG is the only remaining area.
- Masonry Facade being finalized on Gym and Auditorium.
- Consigli is maintaining and adapting COVID protocols as needed. There have been no instances of the pandemic on site.

Billing Status



Progress Pictures



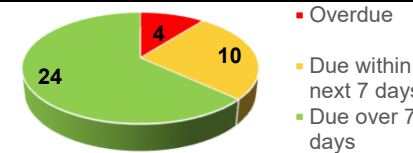
Safety

Current Project Safety Score	99.20%
Total Man Hours to Date	72,089
Incidents to Date/ Month	0

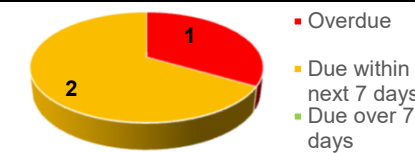
Construction Progress

Work in Place (in Millions)	\$21.550
Work to Complete (in Millions)	\$56.510
Percent Complete	27.61%

Submittal Response Status



RFI Response Status



Schedule

Project Milestones	Target	Actual
Place Slab on Deck - Level 3 Area C	8/12/2020	8/6/2020
Place Slab on deck – Roof level	8/19/2020	8/19/2020
Substantial completion of Stair #3	8/17/2020	8/17/2020
Begin Storefront Window Installation	8/17/2020	Ongoing
Substantial Completion, Phase 2	7/15/2021	Ongoing

Roadblocks

Item	BIC	Due Date

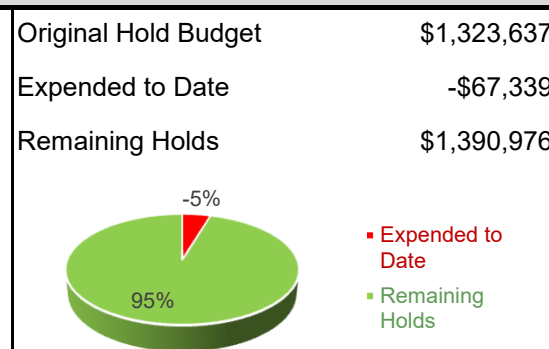
Contract Status

Original Contract Amount	\$77,377,554
Approved Change Orders	\$678,735
Current Contract Amount	\$78,056,289
Procurement	
Percent Complete	100.00%
Buyout Bust / Savings	\$789,424
Buyout Bust / Savings %	1.02%

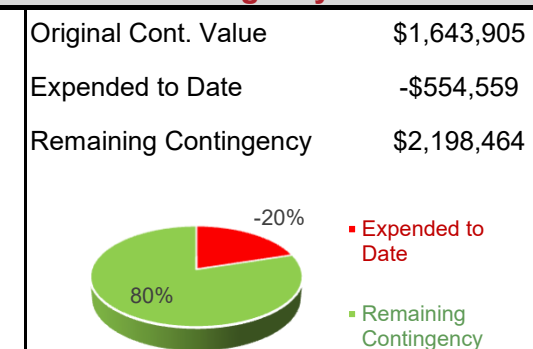
Change Orders

Verbal Approved	\$10,322
Submitted	\$170,444
Pending	\$0
Total Potential Changes	\$180,766
Projected Contract Amount	
With Potential Changes	\$78,237,055

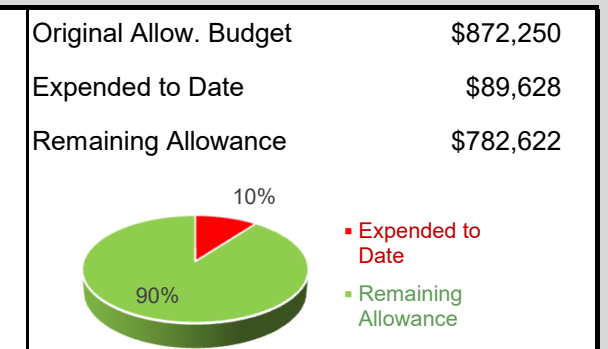
Hold Status



Contingency Status



Allowance Status



Fuller Middle School

Executive Summary

Project Overview

Steel Detailing is substantially complete, with the remainder of work being the completion of brick relieving angles on the exterior. Mechanical coordination is nearing completion with only Level 1 Area A to be signed off. All Slab on Deck placements have occurred and the only remaining area is the Auditorium.

Exterior partition framing is nearing completion for the entire building with sheathing and AVB work following rapidly behind. Masonry Facade work has begun on the Gymnasium and Auditorium buildings, showcasing the scored white CMU block that covers the northern facing portions of the building.

Consigli has maintained the protocols related to the threat of COVID-19 and subcontractor compliance on the project has been excellent. Consigli is staying in constant communication with our subcontractor partners to evaluate any material or manpower impacts and presents all current delays at the weekly OAC meeting. Consigli has been proactive in seeking opportunities to mitigate schedule impact. The schedule impact for Steel erection was finalized on Change Order #13, with the substantial completion date of 7/15/21.

Financial Status

Change Order #13 was presented at the SBC meeting on August 13th, 2020 in the amount of \$279,141.86. This change order brings the new contract amount to \$78,056,289.34.

Quality Update

Overall quality to date has been good. The mockup window passed all tests ahead of the installation beginning at the south side of Building Area B and the project team is working through various details to ensure multi trade coordination to aid the window install.

Testing is ongoing for soil compaction, mortar/grout strength and steel connections. and field visits are being made continuously by all architect consultants and engineers.

Safety continues to be excellent; Through August, we have 439 days onsite without a lost time incident.

Roadblocks

There are no roadblocks currently open.

Schedule Milestones

Place Slab on Deck - Level 3 Area C	8/6/2020
Place Slab on deck – Roof level	8/19/2020
Substantial completion of Stair #3	8/17/2020
Begin Storefront Window Installation	Ongoing



Photos 1 & 2: Aerial Drone Views of the site showing the building envelope elements installation progressing.





Photo 3: Masonry Façade work has begun on the gym and auditorium



Photo 4: Preparatory work for a Slab on Grade placement in Building Area C