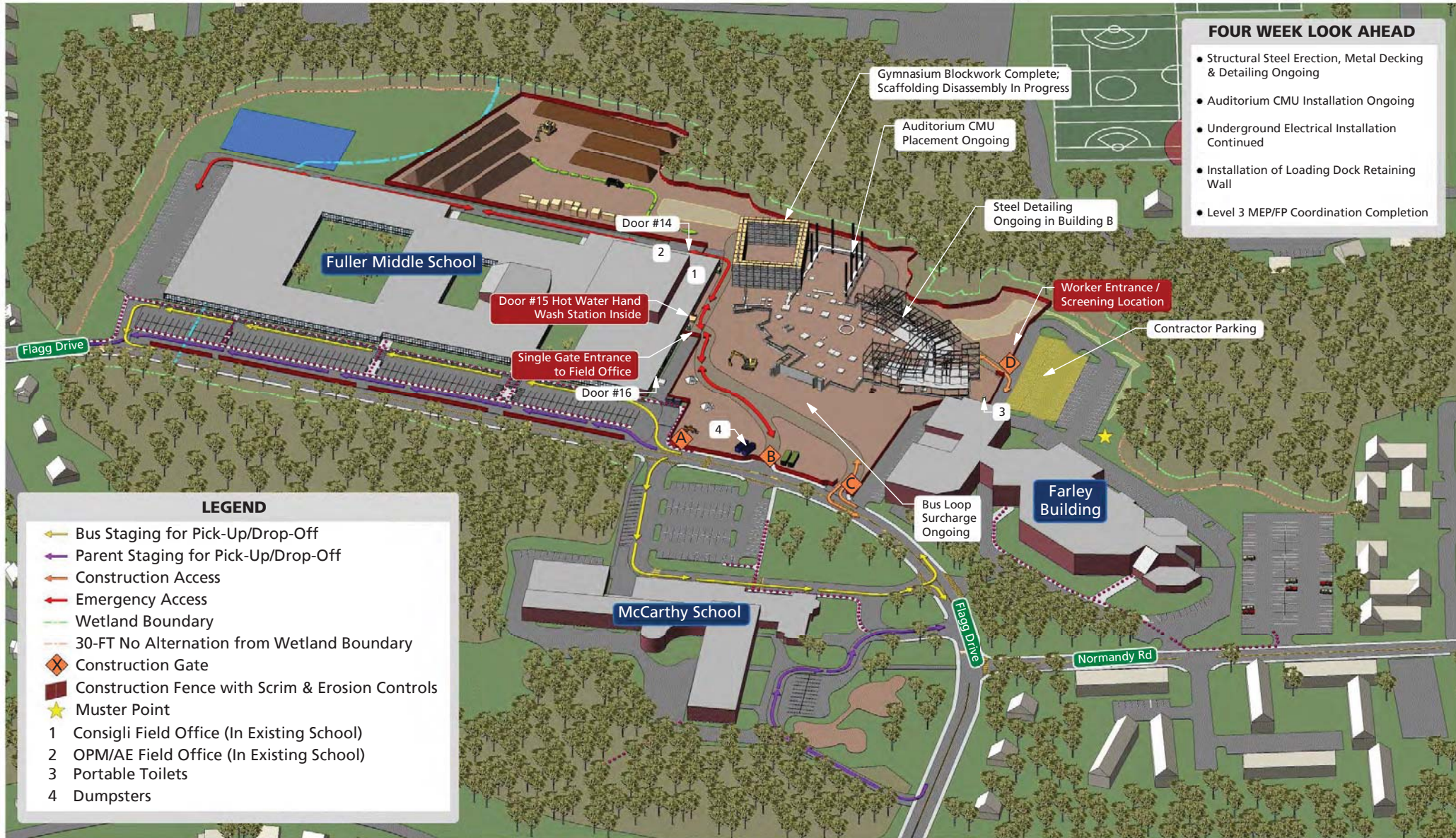


Fuller Middle School



April Progress Updates



- FOUR WEEK LOOK AHEAD**
- Structural Steel Erection, Metal Decking & Detailing Ongoing
 - Auditorium CMU Installation Ongoing
 - Underground Electrical Installation Continued
 - Installation of Loading Dock Retaining Wall
 - Level 3 MEP/FP Coordination Completion

- LEGEND**
- ↔ Bus Staging for Pick-Up/Drop-Off
 - ↔ Parent Staging for Pick-Up/Drop-Off
 - ↔ Construction Access
 - ↔ Emergency Access
 - Wetland Boundary
 - 30-FT No Alternation from Wetland Boundary
 - ◆ Construction Gate
 - Construction Fence with Scrim & Erosion Controls
 - ★ Muster Point
- 1 Consigli Field Office (In Existing School)
 - 2 OPM/AE Field Office (In Existing School)
 - 3 Portable Toilets
 - 4 Dumpsters

Gymnasium Blockwork Complete; Scaffolding Disassembly In Progress

Auditorium CMU Placement Ongoing

Steel Detailing Ongoing in Building B

Worker Entrance / Screening Location

Contractor Parking

Door #15 Hot Water Hand Wash Station Inside

Single Gate Entrance to Field Office

Bus Loop Surcharge Ongoing

Farley Building

McCarthy School

Fuller Middle School

Flagg Drive

Flagg Drive

Normandy Rd

Consigli Owner Monthly Dashboard

April 2020

Fuller Middle School

31 Flagg Drive, Framingham, MA

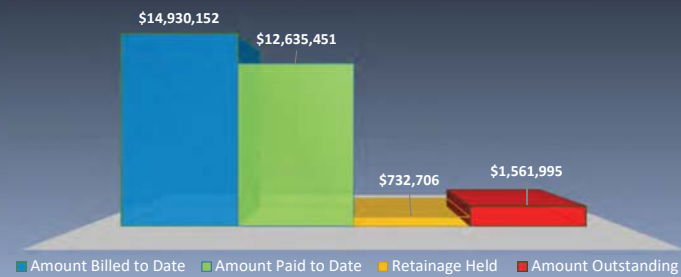


CONSIGLI
Est. 1905

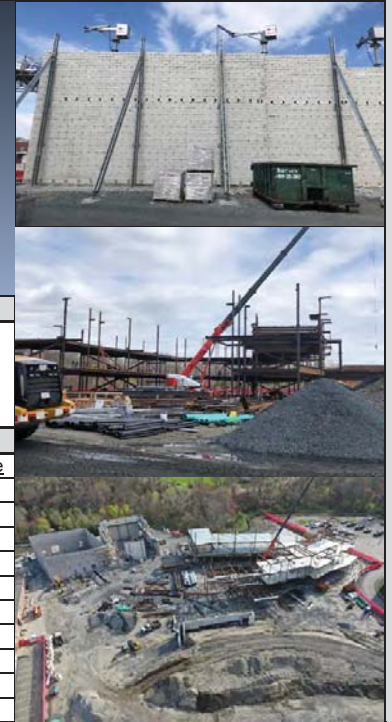
Executive Overview

- A 3rd party steel fabricator was engaged to mitigate schedule delays as a result of COVID19.
- Auditorium Masonry walls are nearing completion ahead of steel joists being set for the gymnasium/auditorium roof.
- Coordination efforts are ongoing with the primary focus now shifting to second floor as the roof, 3rd floor and underground are substantially complete.
- Consigli is responding proactively to the ongoing situation surrounding COVID-19 with an onsite safety plan and constant communication with subcontractors to determine any impacts.

Billing Status



Progress Pictures



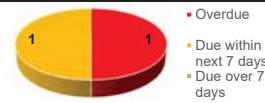
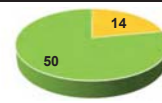
Safety

Construction Progress

Current Project Safety Score	98.80%	Work in Place (in Millions)	\$14.930
Total Man Hours to Date	45,882	Work to Complete (in Millions)	\$62.630
Incidents to Date/ Month	0	Percent Complete	19.25%

Submittal Response Status

RFI Response Status



Schedule

Roadblocks

Project Milestones	Target	Actual
Complete Auditorium CMU	5/8/2020	5/8/2020
MEP Coordination Signoff Level 2	5/8/2020	Ongoing
Begin SOD placement in Building Area East	5/21/2020	Ongoing
Substantial Completion, Phase 2	6/15/2021	Ongoing

Item	BIC	Due Date

Contract Status

Change Orders

Hold Status

Contingency Status

Allowance Status

Original Contract Amount	\$77,377,554	Verbal Approved	-\$6,641	Original Hold Budget	\$151,000	Original Cont. Value	\$1,643,905	Original Allow. Budget	\$1,129,450
Approved Change Orders	\$185,565	Submitted	\$126,039	Expended to Date	\$35,386	Expended to Date	\$67,575	Expended to Date	\$420,882
Current Contract Amount	\$77,563,119	Pending	\$81,042	Remaining Holds	\$115,614	Remaining Contingency	\$1,576,330	Remaining Allowance	\$708,568
Procurement		Total Potential Changes	\$200,440						
Percent Complete	91% (BP4)	Projected Contract Amount							
Buyout Bust / Savings	\$334,640	With Potential Changes		\$77,763,559					
Buyout Bust / Savings %	0.43%								

Fuller Middle School

Executive Summary

Project Overview

Work is substantially completion for the auditorium masonry walls, ahead of the crane which will be located within the auditorium to set the gymnasium roof joists. Mechanical coordination has been completed at the utility corridor near mechanical equipment rooms. With coordination substantially complete at the Roof, 3rd Floor and Underground, focus now has shifted to the second floor overhead.

Steel erection began on 3/16 with approximately 1/3 of the steel for the project erected through the end of the month of April. Currently the majority of "B Building" (the eastern half of the classroom wing) has been erected and decked, with steel detailing ongoing ahead of the first concrete slab placement, scheduled for late May. Rough grading has been completed for the Bus Loop with settlement monitoring points and surcharge in place.

Consigli has installed new protocols related to the threat of COVID-19 and stayed consistent in upholding them through the duration of the pandemic. These include onsite cleaning stations, elimination of all non-essential meetings in person, and redundancy contingencies to allow for continuous project supervision. Consigli is staying in constant communication with our subcontractor partners to evaluate any material or manpower impacts and presents all current delays at the weekly OAC meeting. The entirety of schedule impacts as a result of COVID 19 remains unknown, but significant delays to the steel subcontractor drafting and fabrication process have been brought to Consigli's attention. Impacts from COVID in the steel fabrication plant necessitated that the crane demobilized and a third party fabrication plant has been engaged to mitigate the impacts of COVID 19 related delays

Subcontractor procurement is ongoing, 89% of the project has been purchased; OALs thru #29 have been submitted.

Financial Status

Change Order #9 was presented at the SBC meeting on April 13th, 2020 in the amount of \$54,844.33. This change order brings the new contract amount to \$77,561,118.78.

Quality Update

Overall quality to date has been good. Structural Steel submittal review is nearing completion and MEP submittal review is ongoing. Weekly coordination meetings, with Architect involvement, are ongoing to mitigate any MEP clashes in the field before they occur. Testing is ongoing for soil compaction, mortar/grout strength and steel connections.

Safety continues to be excellent; Through April, we have 316 days onsite without a lost time incident.

Roadblocks

The roadblock for steel fabrication and drafting related to COVID19 has been closed with the onboarding of the 3rd party fabricator. Our current schedule anticipates a delay in the substantial completion date of the project, but still allows for the opening of school in Fall 2021. There are no open roadblocks at this time.



Photos 1 & 2: Aerial Drone Views of the site showing the steel/masonry building superstructure.



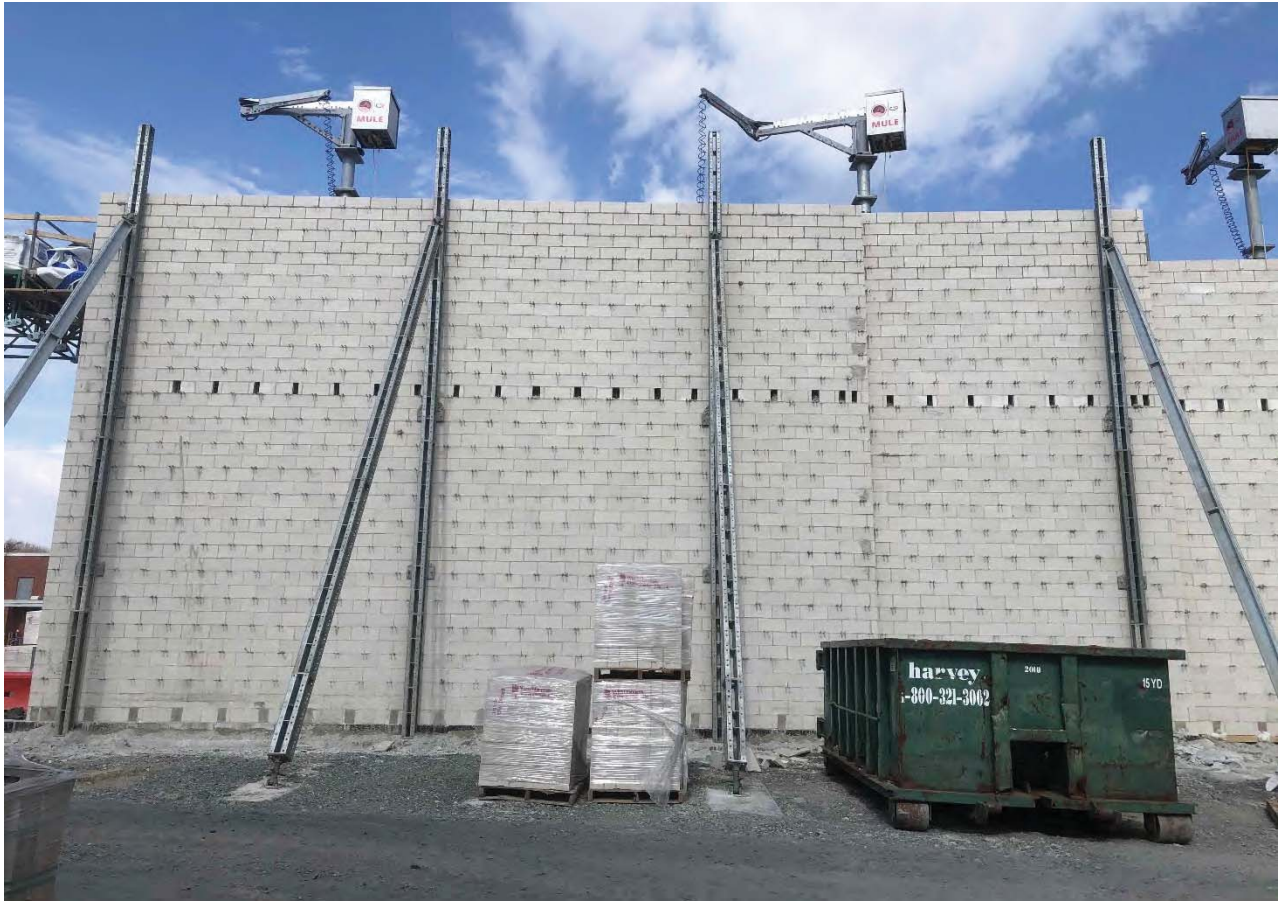


Photo 3: Auditorium Masonry Walls nearing completion.



Photo 4: Steel has been erected for approximately 1/3 of the project which began on March 16, 2020.