

FULLER MIDDLE SCHOOL FEASIBILITY STUDY

PTO Meeting

Agenda

1. Introductions
2. Process and Schedule
3. Existing School Conditions
4. Educational Programming
5. Design Update
6. Cost and Schedule
7. Next Steps
8. Questions

Feasibility Study Scope, Process and Schedule

Feasibility Study Scope

- **MSBA** is an independent public authority that administers and funds a program for grants to eligible cities, towns, and regional school districts for school construction and renovation projects.
- **MSBA** mandates a multi-step rigorous study and approval process
- **MSBA** requires formation of a School Building Committee to oversee the study and project on behalf of the community

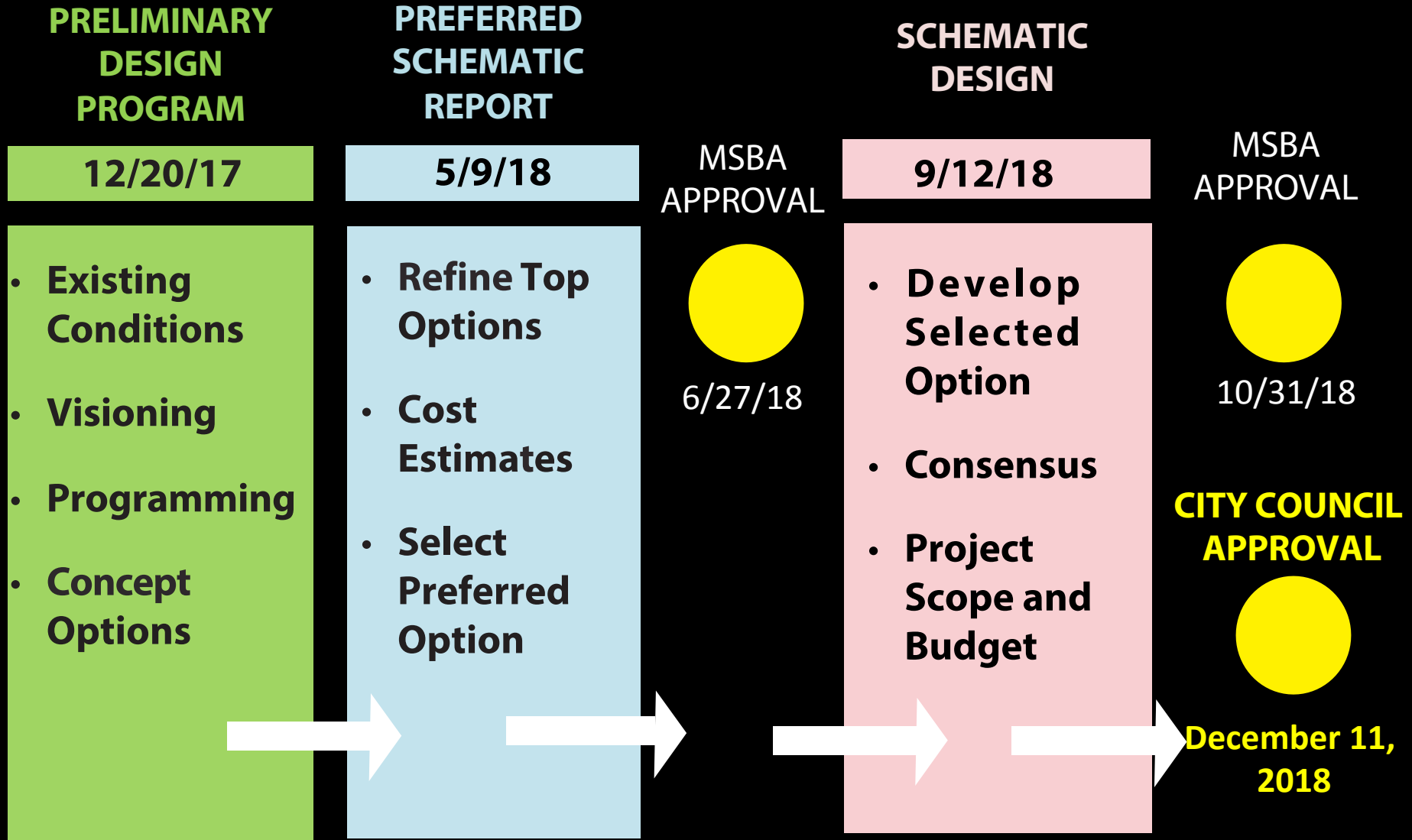
Feasibility Study Scope

The MSBA has agreed to participate with Framingham in a feasibility study for a **630 Student Middle School for Grades 6-8.**

Study Scope includes:

- Existing Conditions Review
- Educational Program
- Design Alternatives
 - Renovation
 - Renovation / Addition
 - All New Construction
- Cost Estimates

MSBA Feasibility Study Process and Schedule



Defining the Need

The Need:

- Need a long-term solution to resolve deteriorating school building
- Provide educational spaces to meet MSBA standards
- Update the layout to meet 21st century Visioning Session goals

The Goal

- Cost Effective, Sustainable and Educational Appropriate School with the least impact to the ongoing education of the students

EDUCATIONAL DEFICIENCIES



- BETWEEN 90% - 110% MSBA GUIDELINE
- MORE THAN 110% MSBA GUIDELINE
- LESS THAN 90% MSBA GUIDELINE
- NOT IN MSBA PROGRAM
- OUTSIDE PROGRAMS

1

FULLER SCHOOL - MSBA SPACE NEEDS COMPLIANCE

1" = 60'-0"

PHYSICAL BUILDING DEFICIENCIES

Energy Code

Envelope

Accessibility

Structural

Mechanical, Electrical and
Plumbing Systems

Hazardous Materials



The Cost of only Repairing the existing Fuller Middle School is estimated to be \$131 million dollars with no educational improvements or MSBA reimbursement.

Educational Programming

Fuller Middle School is in its fourth year of STEAM (Science, Technology, Engineering, Arts and Mathematics)

- Transdisciplinary Instruction – Connect multiple content areas by linking concepts and skills with a real-world context. Encourage and support Inquiry.
- Personalized and Collaborative Learning – Teach students to take charge of their own learning with “hands-on” projects that can correspond with their interests and needs.
- Whole Child, Whole Community – Actively support emotional and social foundations to improve academic success.

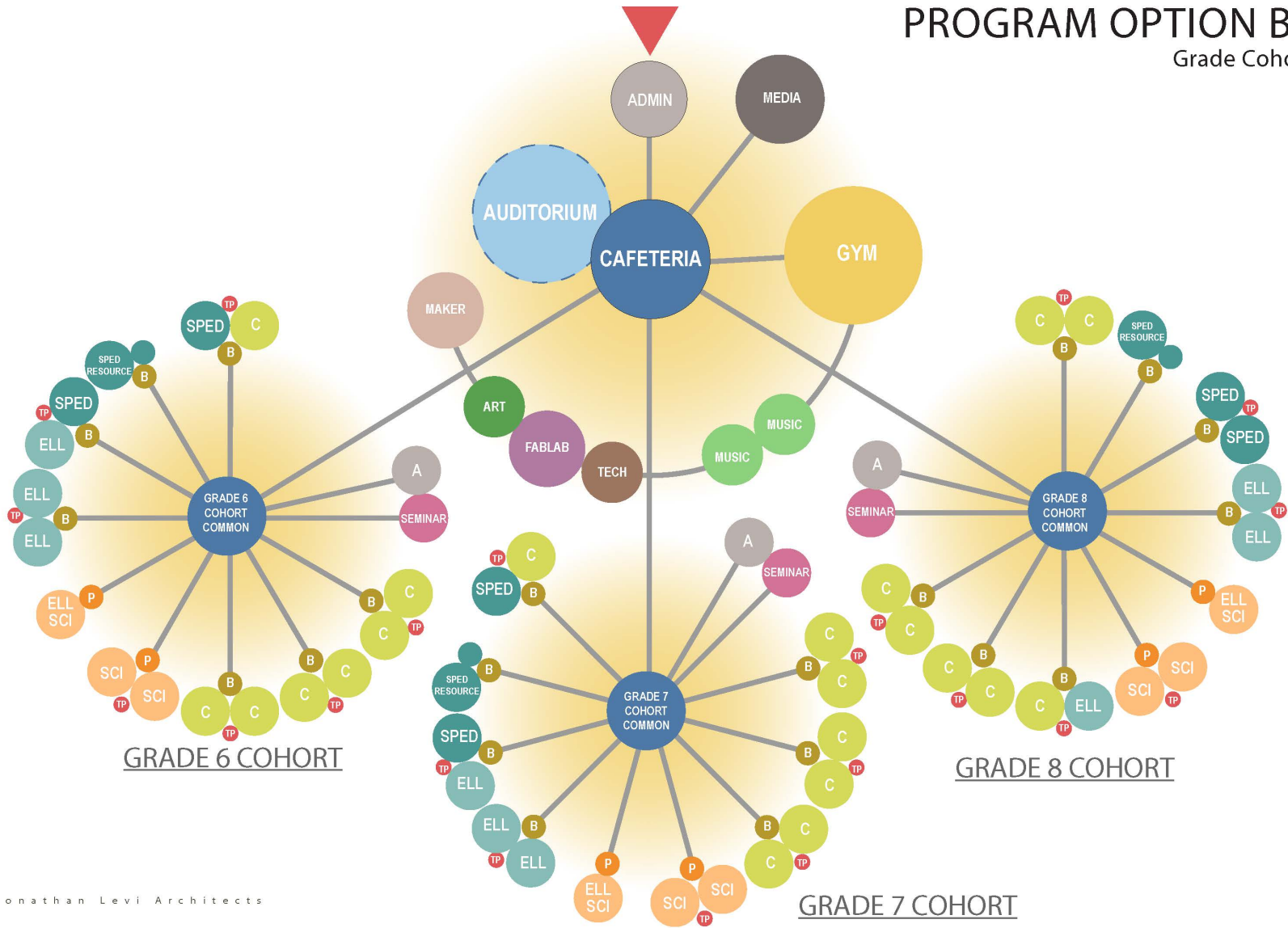
DESIGN PRINCIPALS

- Visible Learning – Inspire students to learn from each other through student collaboration, presentations, demonstrations, and ongoing works-in-progress.
- Community and Civic Hub – Continue existing use as central location for meetings, adult learning, school productions and recreational activities.
- Adaptability – This building will need to meet Framingham’s future needs, so must be versatile enough to accommodate different teaching methods, including traditional ones.

Design Update

Educational Program Diagram

PROGRAM OPTION B.2 Grade Cohorts



SD Refinement – Landscape



Jonathan Levi Architects

BUS QUEUE - 869 LF
PARENT QUEUE - 580 LF



PROJECT MANAGEMENT **SMMA**

Jonathan Levi Architects

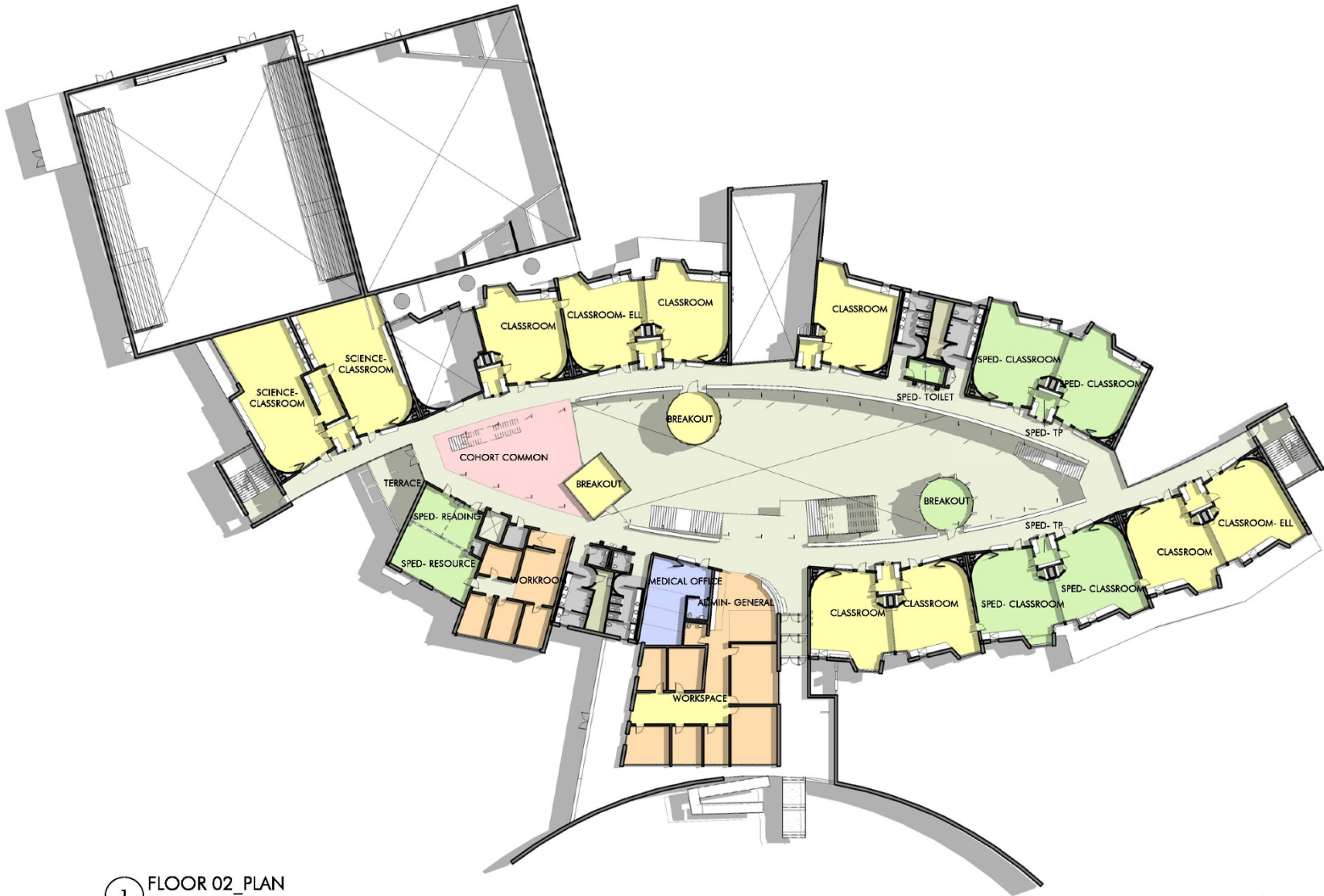
Fuller Middle School Feasibility Study
PTO Meetings

FIRST FLOOR PROGRESS PLAN



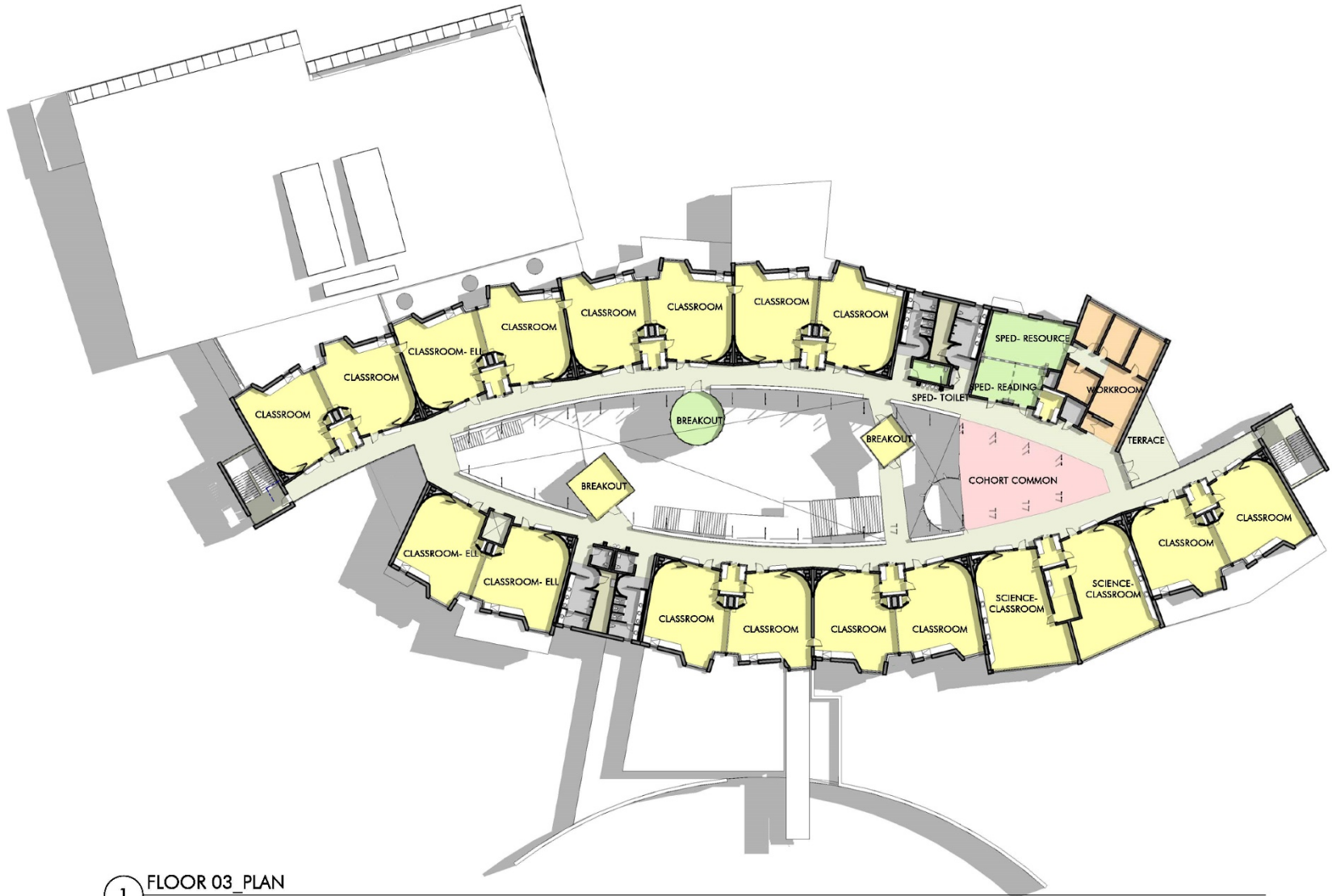
1 FLOOR 01_PLAN
1/32" = 1'-0"

SECOND FLOOR PROGRESS PLAN



1 FLOOR 02_PLAN
1/32" = 1'-0"

THIRD FLOOR PROGRESS PLAN



1 FLOOR 03_PLAN
1/32" = 1'-0"

Classroom Suite 'Building Block'



Maker Space



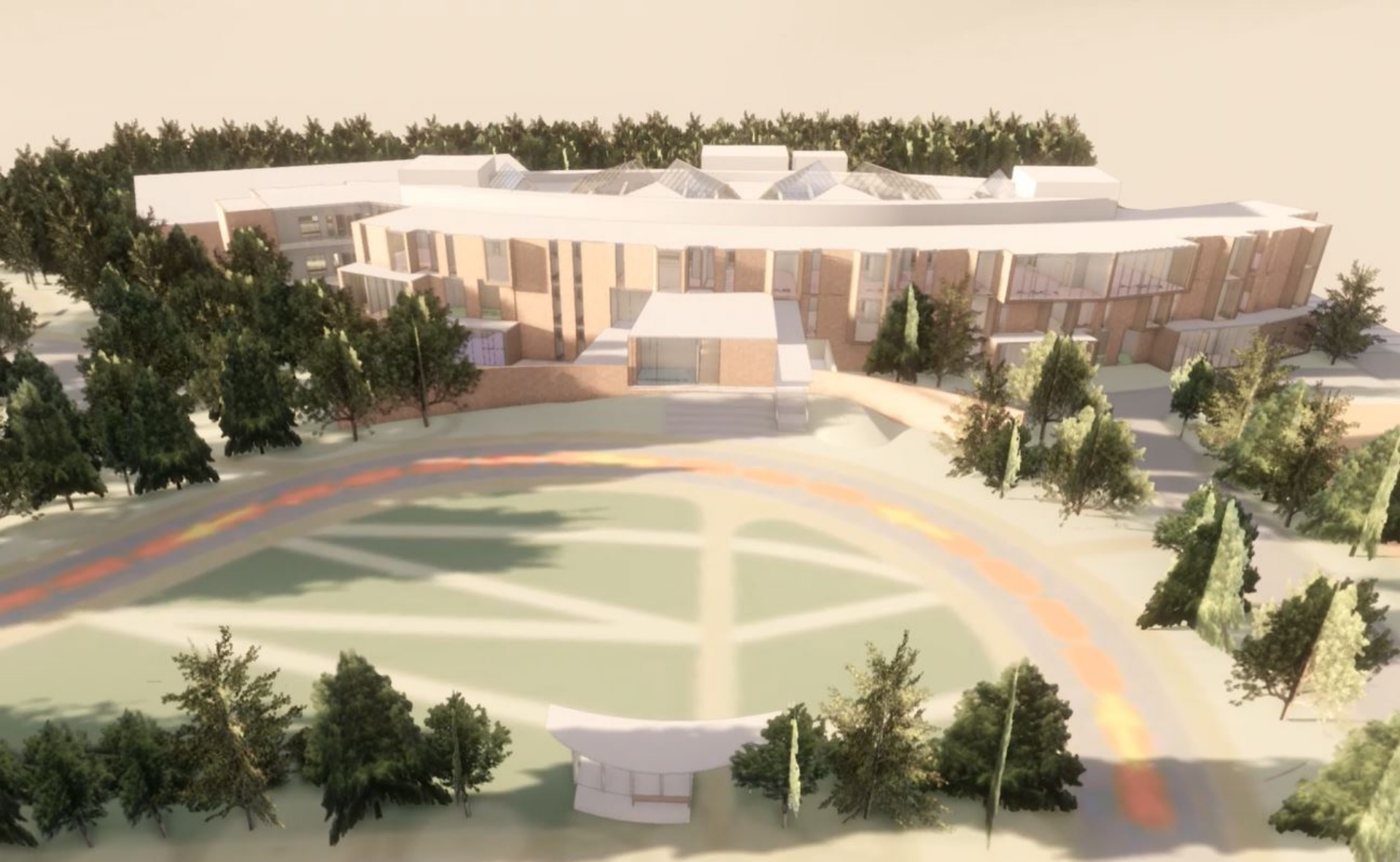
MAKER SPACE

MAKER COURT

Fabrication Lab



Front View



Rear View



Cost and Schedule

TOTAL PROJECT COST

CONSTRUCTION COST (BUILDING + SITE WORK+ MARK-UPS)	\$77.9M
FEES & EXPENSES	\$12.6M
FURNITURE, FIXTURES & EQUIPMENT	\$2.3M
CONTINGENCIES	\$5.5M
TOTAL	\$98.3M

WHAT WILL BE FRAMINGHAM'S SHARE?

PROJECT COST	\$98.3M
APPROXIMATE MSBA GRANT	\$39.5M
APPROXIMATE COST TO FRAMINGHAM	\$58.8M

WHAT DOES THIS MEAN TO THE AVERAGE TAXPAYER?

29 Cents annual tax increase per \$1,000
valuation

\$101 per year, OR

\$8.41 per month, OR

28 Cents per day

Based on a 20-year bond utilizing \$8 million of the
Capital Stabilization Fund

Project Timeline

PROJECT TIMELINE

December 2018 - Detailed Design Commences

Summer 2019 - Construction Commences

Summer 2021 – New Building is Completed

December 2021 – Demolition and Sitework Completed

PROJECT TIMELINE

School Year	Grade								
2017-2018	K	1	2	3	4	5	6	7	8
2018-2019	1	2	3	4	5	6	7	8	9
2019-2020	2	3	4	5	6	7	8	9	10
2020-2021	3	4	5	6	7	8	9	10	11
2021-2022	4	5	6	7	8	9	10	11	12
2022-2023	5	6	7	8	9	10	11	12	
2023-2024	6	7	8	9	10	11	12		
2024-2025	7	8	9	10	11	12			
2025-2026	8	9	10	11	12				

Construction
New Building Open

NEXT STEPS

School Building Committee (SBC) meetings are every two weeks. Meetings and agendas are posted on the FPS website.

- September 11, 2018 – SBC votes to approve Schematic Design
- September 12, 2018 – Submit Schematic Design to MSBA
- October 1, 2018 – Community Forum No. 8
- October 31, 2018 – MSBA Board Meeting to approve project
- November 1, 2018 – Community Forum No. 9
- November 28, 2018 – Community Forum No. 10
- Fall 2018 – City Council votes to appropriate total project cost, approve ballot question and schedule ballot vote
- December 11, 2018 – Debt Exclusion Ballot Vote

Community Resources

Project Website:

www.fullerbuildingproject.com

To receive information on the Fuller Middle School Building Project, please subscribe to the City's [“Notify Me”](#) system

Questions and Comments