

# FULLER MIDDLE SCHOOL FEASIBILITY STUDY

School Building Committee Meeting  
March 19, 2018



Jonathan Levi Architects

# SCHEME A



--- PARENT DROP-OFF 443'  
--- BUS DROP-OFF 978'



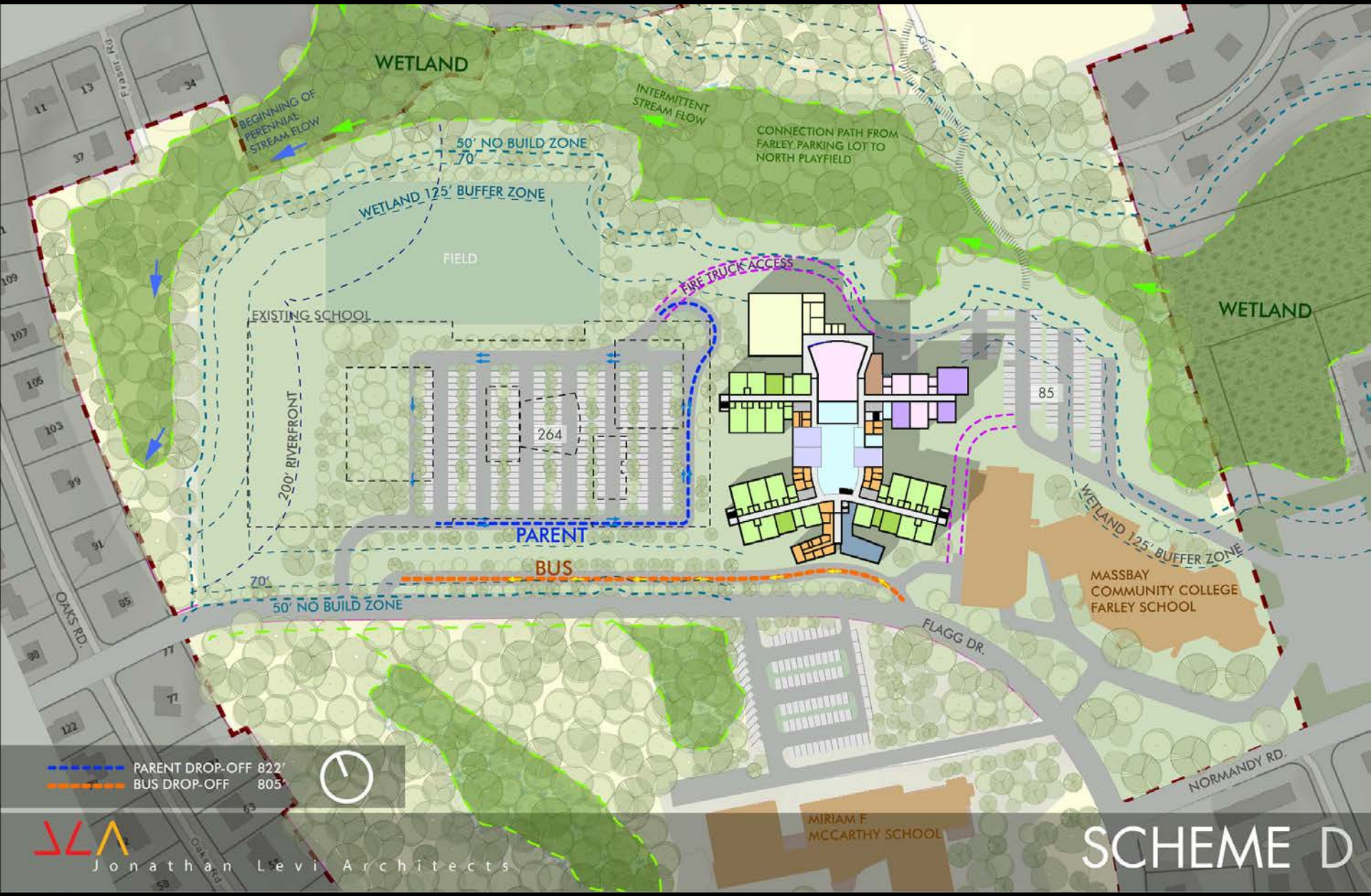


PARENT DROP-OFF 626'  
 BUS DROP-OFF 1050'



Jonathan Levi Architects

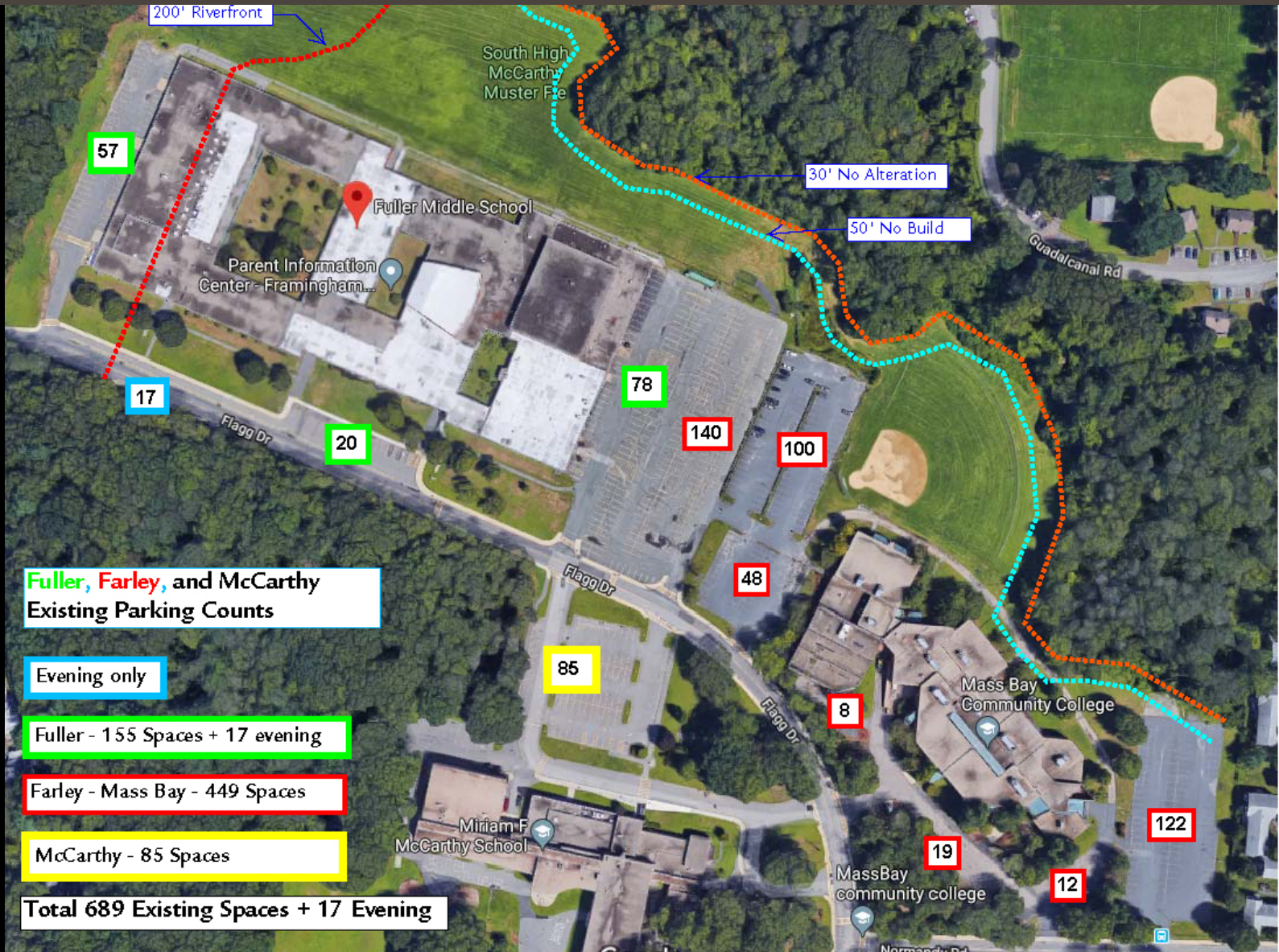
SCHEME C



--- PARENT DROP-OFF 822'  
 --- BUS DROP-OFF 805'



# Existing Parking Counts



**Fuller, Farley, and McCarthy Existing Parking Counts**

Evening only

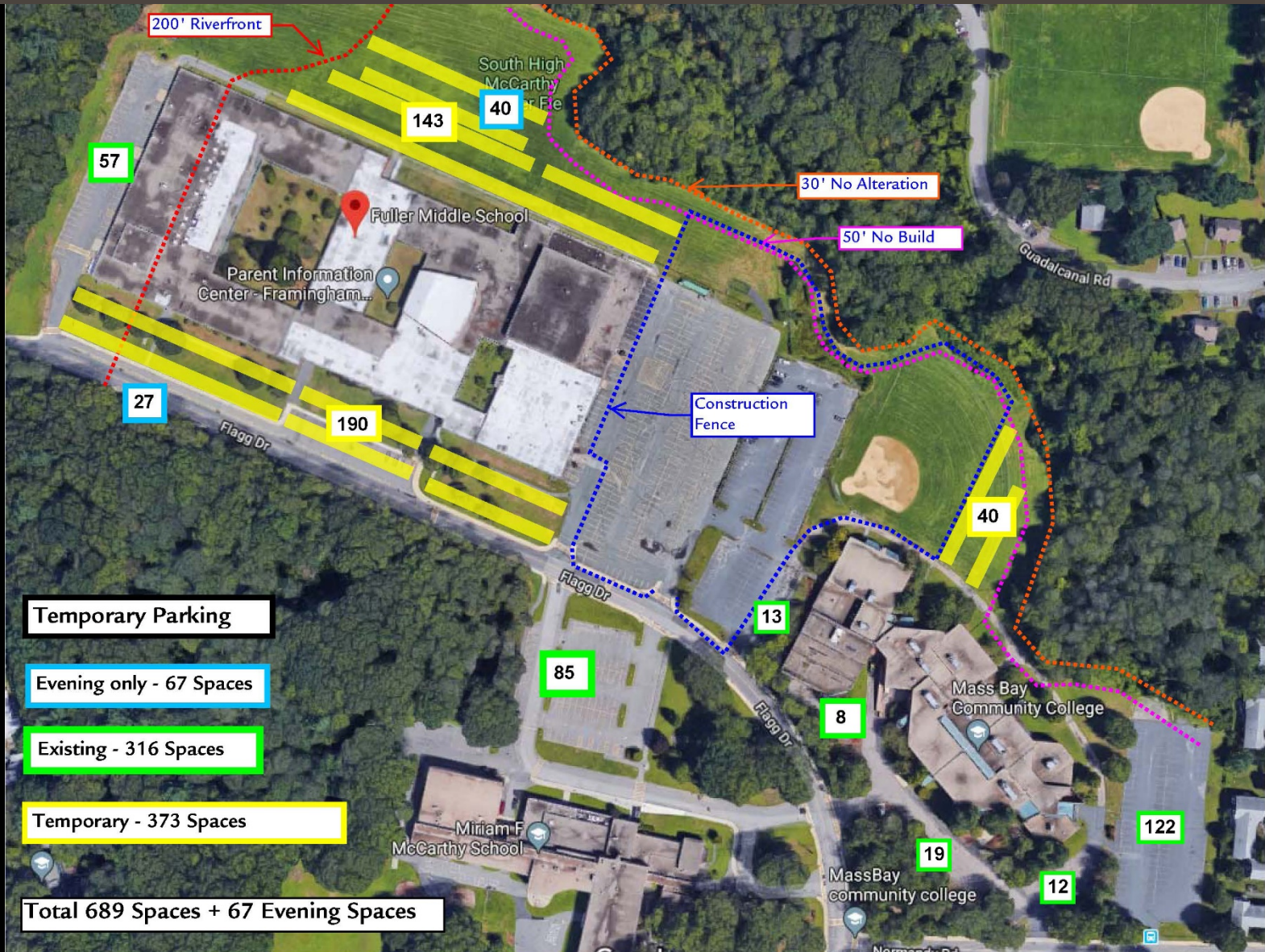
Fuller - 155 Spaces + 17 evening

Farley - Mass Bay - 449 Spaces

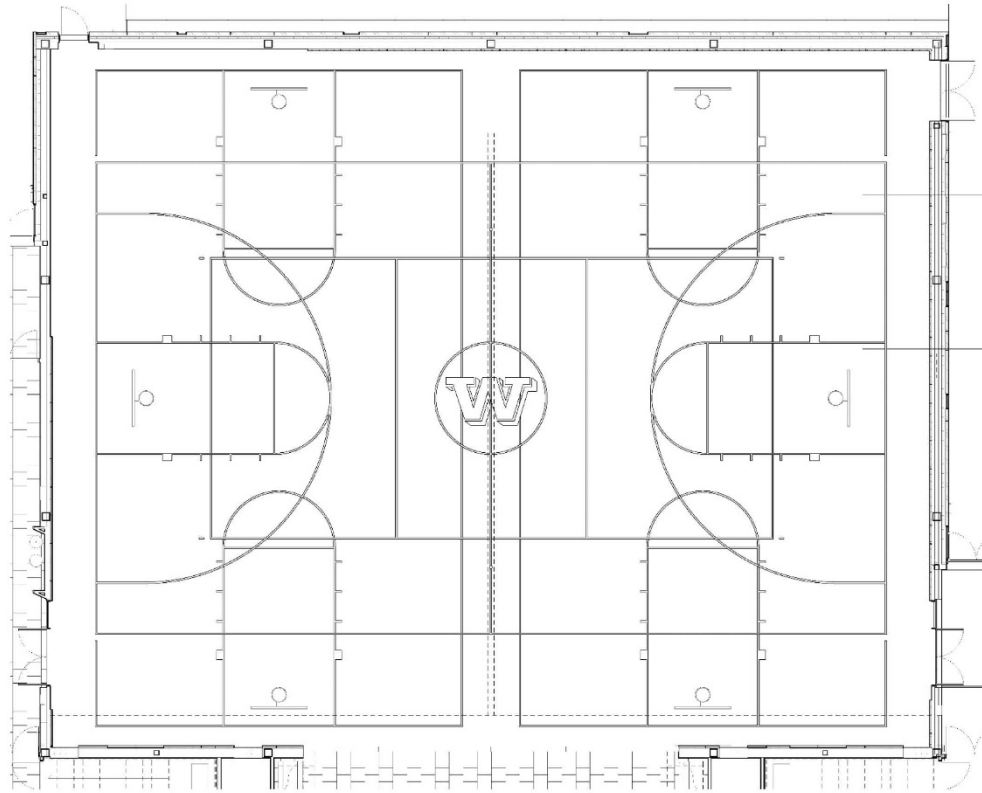
McCarthy - 85 Spaces

**Total 689 Existing Spaces + 17 Evening**

# Temporary Parking and Construction Fence



# Gym Size

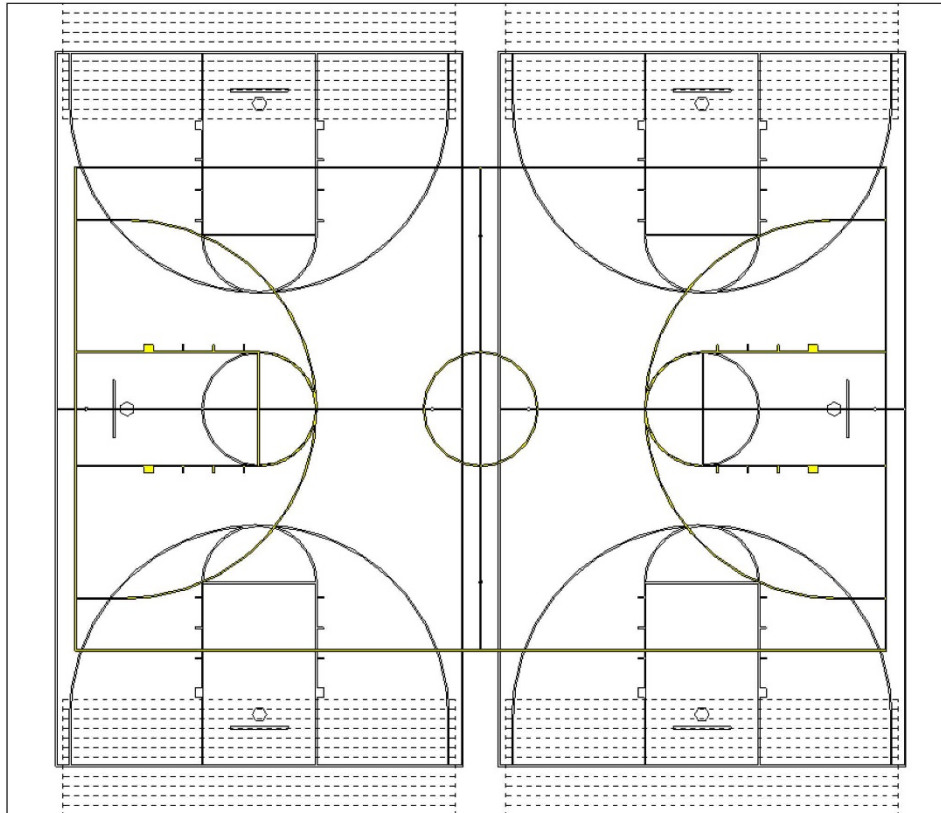


## 6,500 sf Gym

- 1 Center High School basketball court (84' x 50')
- 2 side by side undersized basketball courts (70' x 39' vs 74' x 42')
- 300 bleacher seats



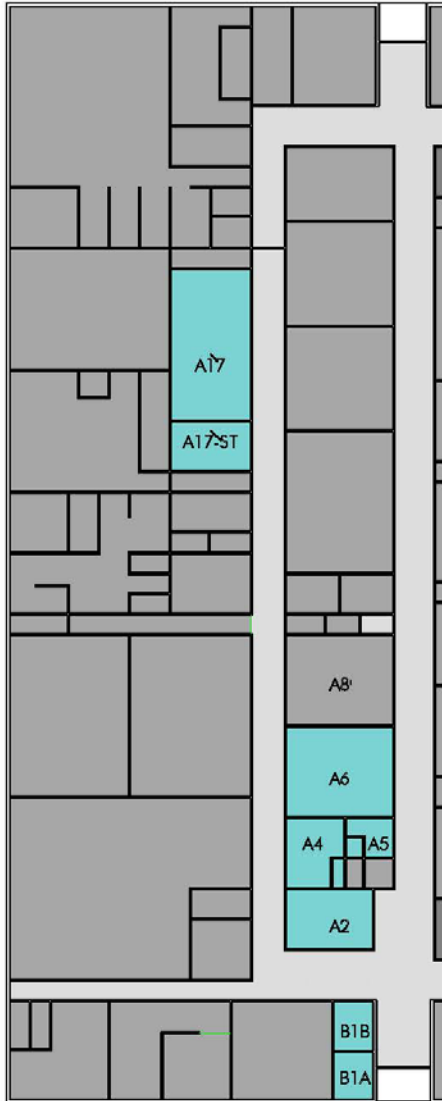
# Gym Size



## Large Gym 8,300 sf

- 1 Center High School basketball court (84' x 50')
- 2 Side by Side Middle School basketball courts (74' x 42')
- 640 bleacher seats

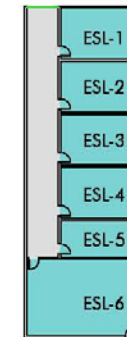
# Adult ESL Areas



NSF_ADULT-ESL_EXISTING		
Number	Comments	Area
A2	OFFICE-shared	446.3 SF
A4	OFFICE-shared 2	316.6 SF
A4-ST	STORAGE	29.8 SF
A5	OFFICE	123.4 SF
A5-T	TOILET	29.6 SF
A6	ADVISOR WORKROOM	834.8 SF
A17	RESOURCE LIBRARY	1,045.8 SF
A17-ST	MECH/STORAGE	340.8 SF
B1A	OFFICE-Director	164.3 SF
B1B	OFFICE-Attendant	169.7 SF
		3,500.8 SF

**EXISTING  
ADULT-ESL**

NSF_ADULT-ESL_NEW		
Number	Comments	Area
ESL-1	OFFICE-LARGE	350.0 SF
ESL-2	OFFICE-LARGE	350.0 SF
ESL-3	OFFICE- SHARED-2	350.0 SF
ESL-4	OFFICE- SHARED-4	350.0 SF
ESL-5	STORAGE	250.0 SF
ESL-6	RESOURCE LIBRARY	750.0 SF
		2,400.0 SF



**PROPOSED  
ADULT-ESL**

# Administration Areas



ADMIN\_Option B

## ADDITIONAL ADMIN REQUESTED: +1,510 SF

ADMIN PROPOSED:	4,940 SF
ADMIN MSBA:	3,430 SF

### CENTRAL ADMINISTRATION:

+ (1) SMALL CONFERENCE ROOM	+200 SF
- (1) ASSISTANT PRINCIPAL OFFICE	-150 SF

### SATELLITE ADMIN @ COHORT COMMON:

+ (2) GUIDANCE OFFICES	
+ (2) GUIDANCE WAITING (RESIZED)	+300 SF
+ (2) TEACHER WORKROOM (RESIZED)	+125 SF
+ (6) OFFICE-DEPT	+135 SF
	+900 SF

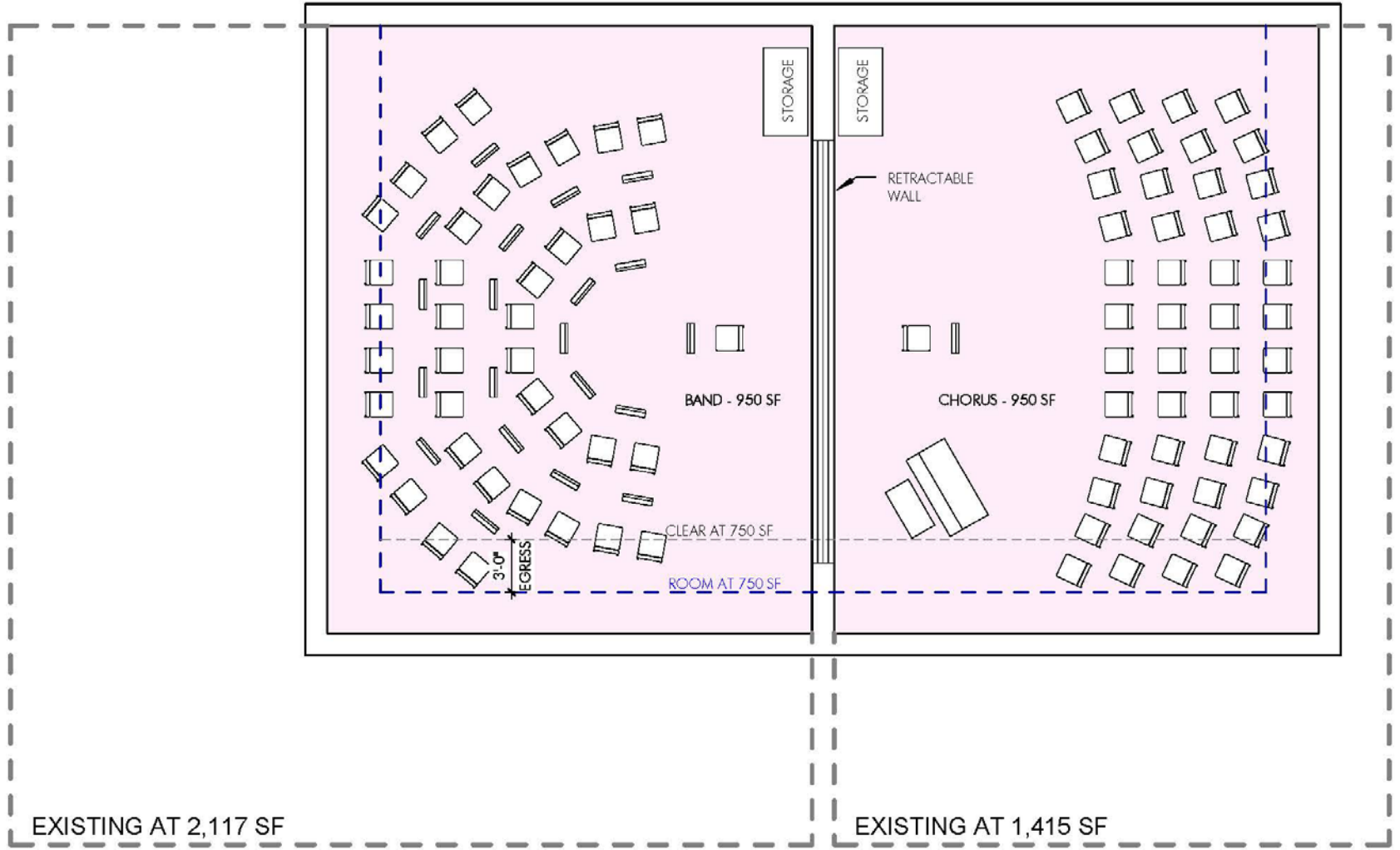
---

+1,510 SF

# Music Areas

BAND AT 950 SF = 38-60 SEATS  
BAND AT 750 SF = 27-48 SEATS

CHORUS AT 950 SF = 48-70 SEATS  
CHORUS AT 750 SF = 34-60 SEATS



# Height Variance

