

# FULLER MIDDLE SCHOOL FEASIBILITY STUDY

School Building Committee Meeting No. 3  
December 4, 2017

Sustainability Goals  
Swing Space Options Update  
Programming Update  
Updated Pre-Concept Alternatives  
Pre-Concept Cost Models



# LEED Goals

## 1. Site:

- Credit for Building on Developed Site
- Control Erosion During Construction
- Improve Storm Water Runoff
- Assess Potential Hazards in the Soil Based on Previous Use
- Reduce Heat Island Solar Absorption
- Reduce Light Pollution
- Provide Community Use

## 2. Reduce and Meter Water Consumption:

- Low Flow Fixtures
- Minimize Irrigation
- Meter Usage

## 3. Reduce Energy Use:

- 3rd Party Verification of Mechanical Systems and Envelope Performance
- High Efficiency Heat and Hot Water Systems
- Excellent Thermal Insulation
- Make “Solar Ready”

## 4. Materials and Resources:

- Design for Reduced Life / Cycle Costs
- Use Environmentally Friendly Materials
- Recycle Demolition and Construction Waste

## 5. Indoor Environmental Quality :

- Excellent Indoor Air Quality
- Use Low -Emitting Materials
- Enhanced Acoustic Performance
- Incorporate Daylighting
- Provide Access to Outdoor Views

# Construction Phase Swing Space Options

Assumption: 530 students, Approx. 80,000sf Minimum

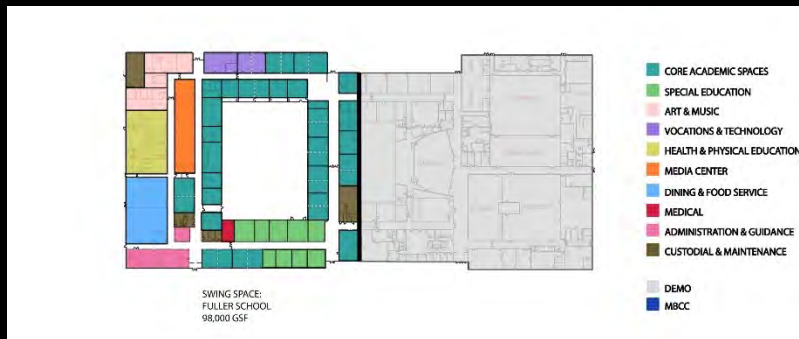
A - Move students to TBD School or Town Property

B - Move students to either all or portion of Farley

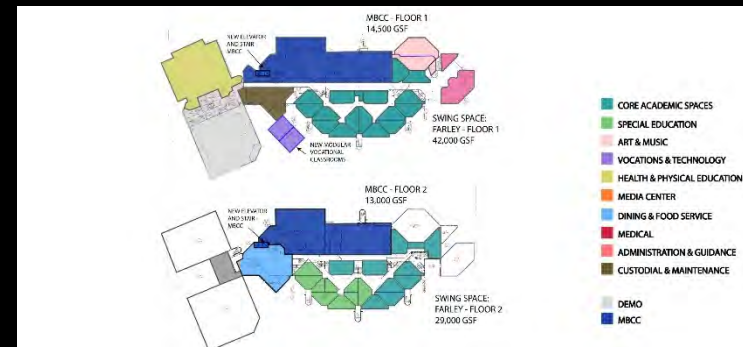
C - Move students to temporary modular facility on site

D - Retain students in reduced footprint portion of Fuller with temporary reno.

D.1 - Retain students in Fuller as is (new footprint in East parking)



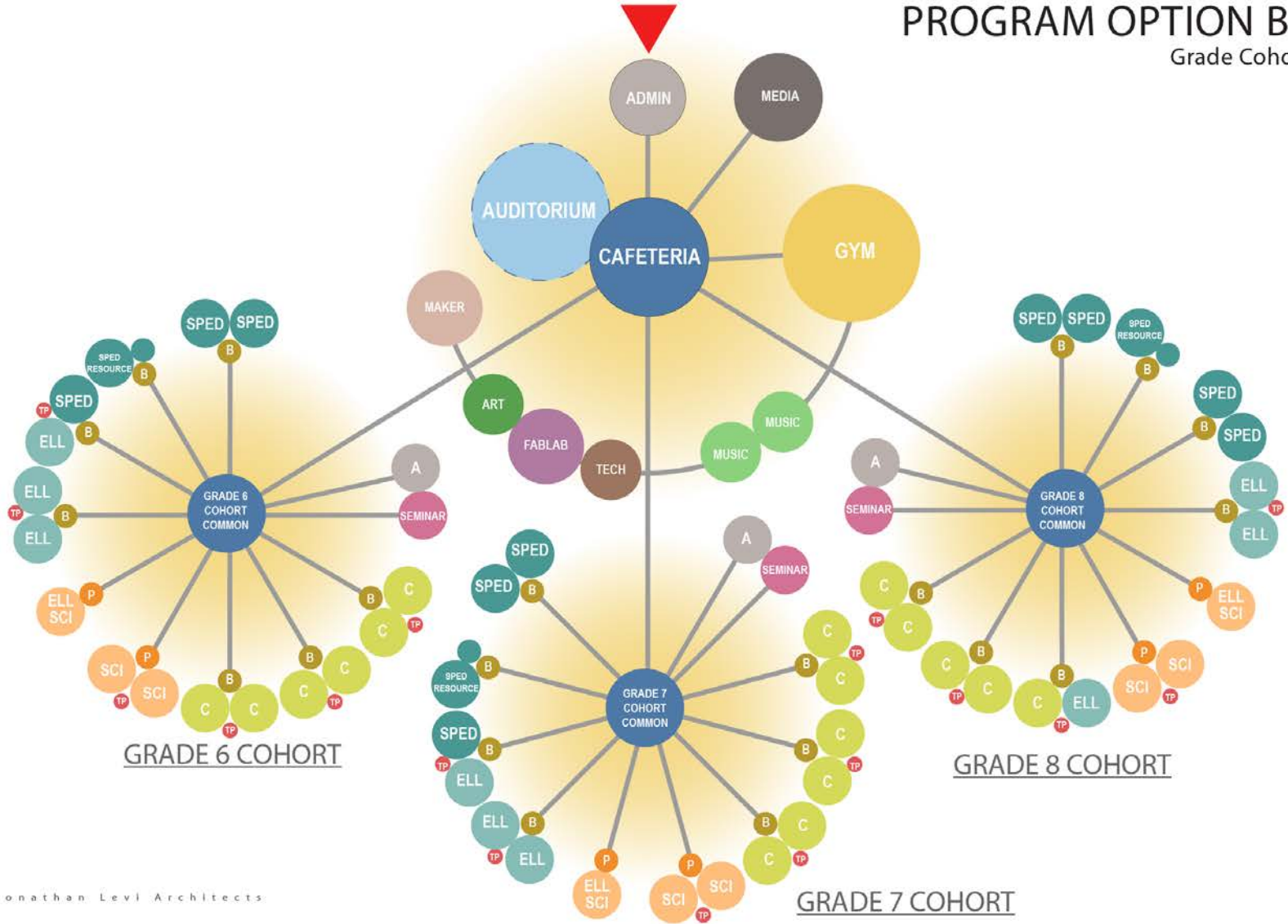
West Fuller



Farley

# Program Diagram Option B (Revised)

## PROGRAM OPTION B.1 Grade Cohorts





# Pre-Concept 0 - 'Code Upgrade Renovation'





# Pre-Concept 0.1 - 'Demo/Reno - Improved Caf.': Aerial View





# Pre-Concept A - 'Add/Reno'- Improved Caf., New Classrooms/Admin.: Aerial View

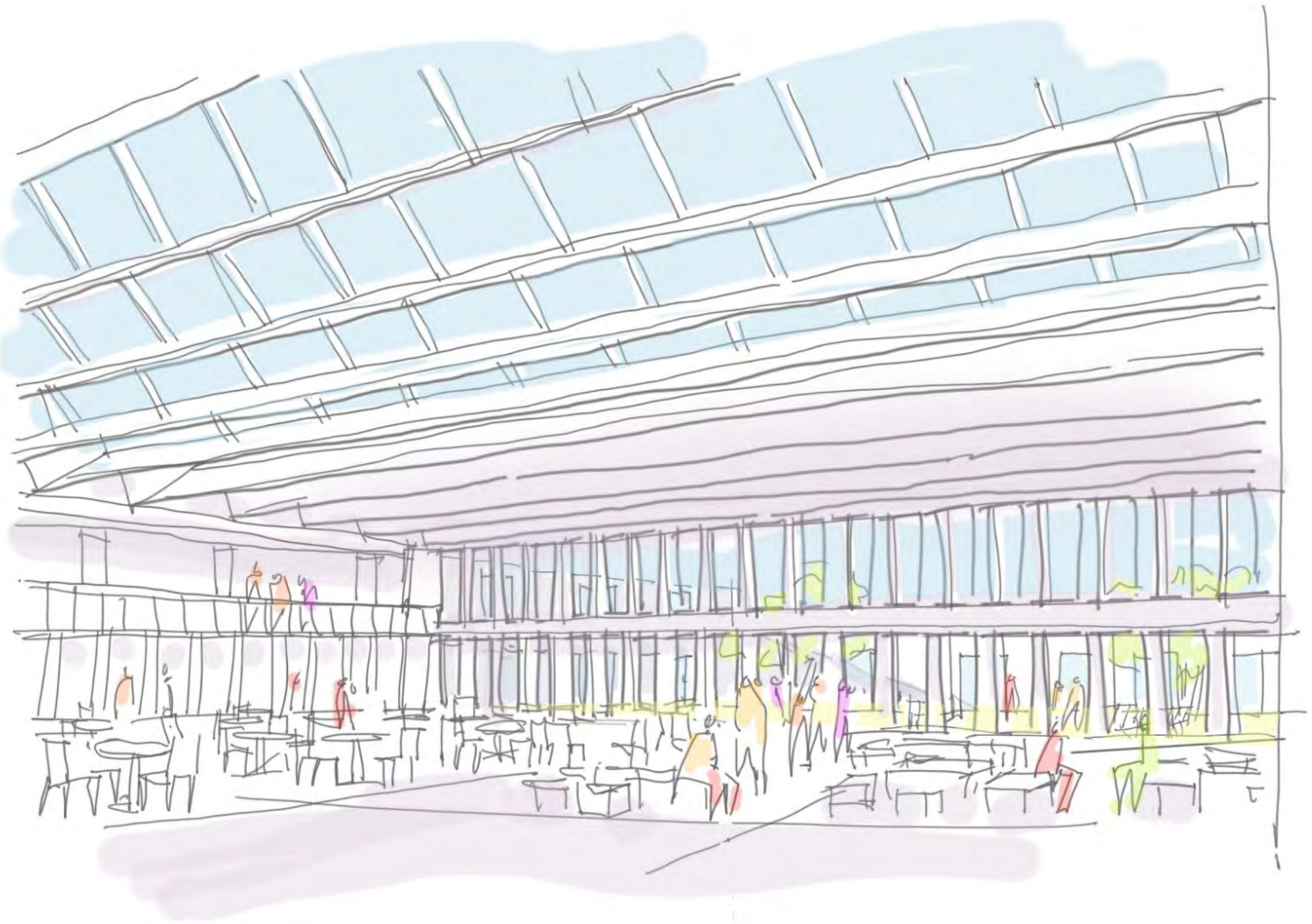


# Pre-Concept A - 'Add/Reno': Exterior Sketch Concept





# Pre-Concepts 0.1/A - 'Add/Reno': Interior Sketch Concept



# Pre-Concept B.1 - 'Tree Branches - Add/Reno – Exist'g Gym and Aud.': Aerial View





# Pre-Concept B.2 - 'Tree Branches – New with New Aud.': Aerial View





# Pre-Concepts B.1/B.2 - 'Tree Branches': Exterior Sketch Concept



# Pre-Concepts B.1/B.2 - 'Tree Branches': Interior Sketch Concept





# Pre-Concept C.1 - 'Folded Hands - Add/Reno – Exist'g Gym': Aerial View





# Pre-Concept C.2 - 'Folded Hands - New': Aerial View



# Pre-Concepts C.1/C.2 - 'Folded Hands': Exterior Sketch Concept





# 'Convertible Commons Concept'



Stage at main floor elevation

Suspended adjustable acoustic reflectors & absorbers

Daylighting with adjustable shades

High performance heavy mass enclosure

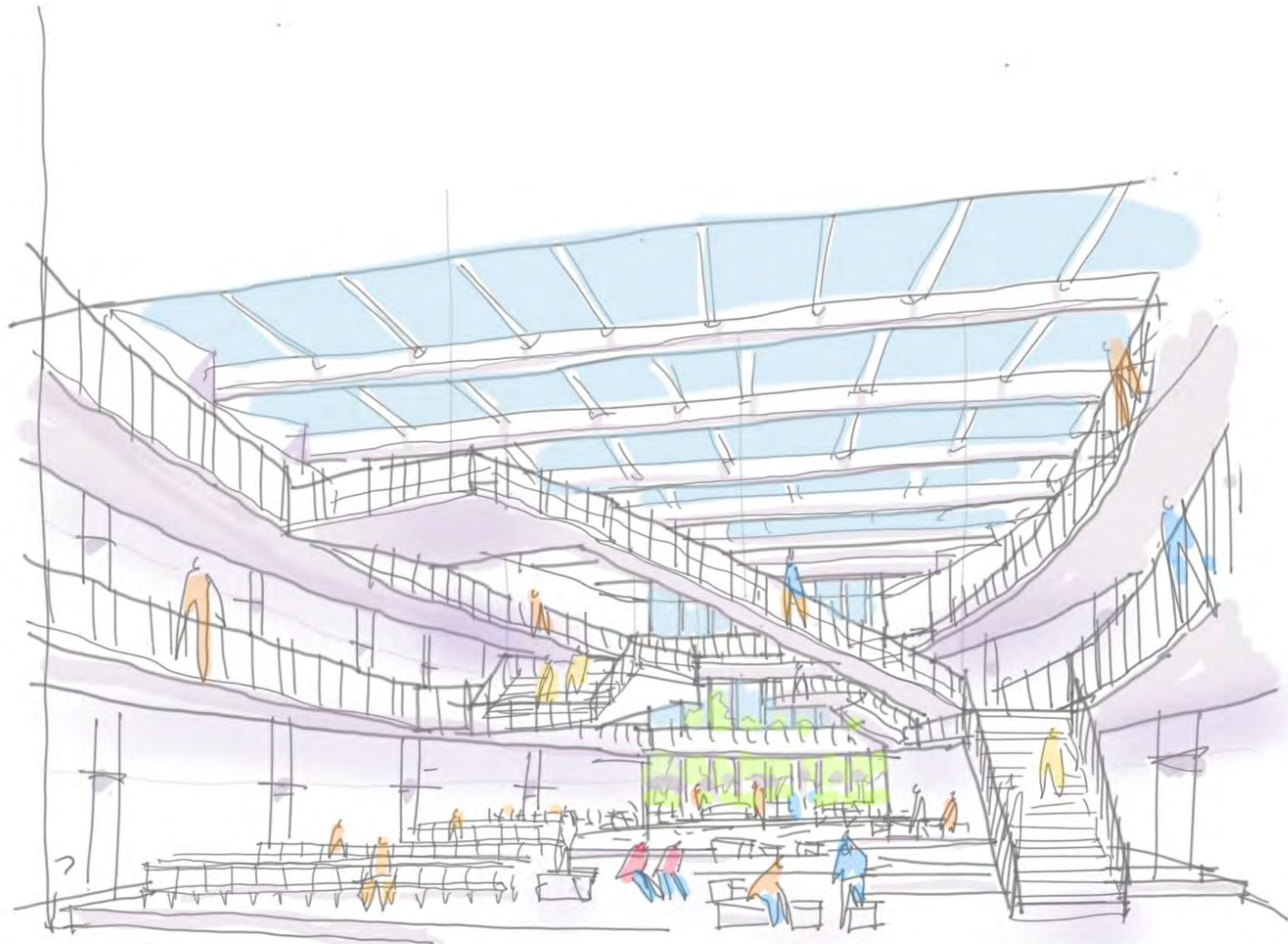
Balcony

Multi-functional partial flat floor seating with rear section removable platforms

900 Seat Multi-functional Performance Hall



# Pre-Concepts C.1/C.2 - 'Folded Hands': Interior Sketch Concept



# Pre-Concept D - 'Butterfly - New': Aerial view

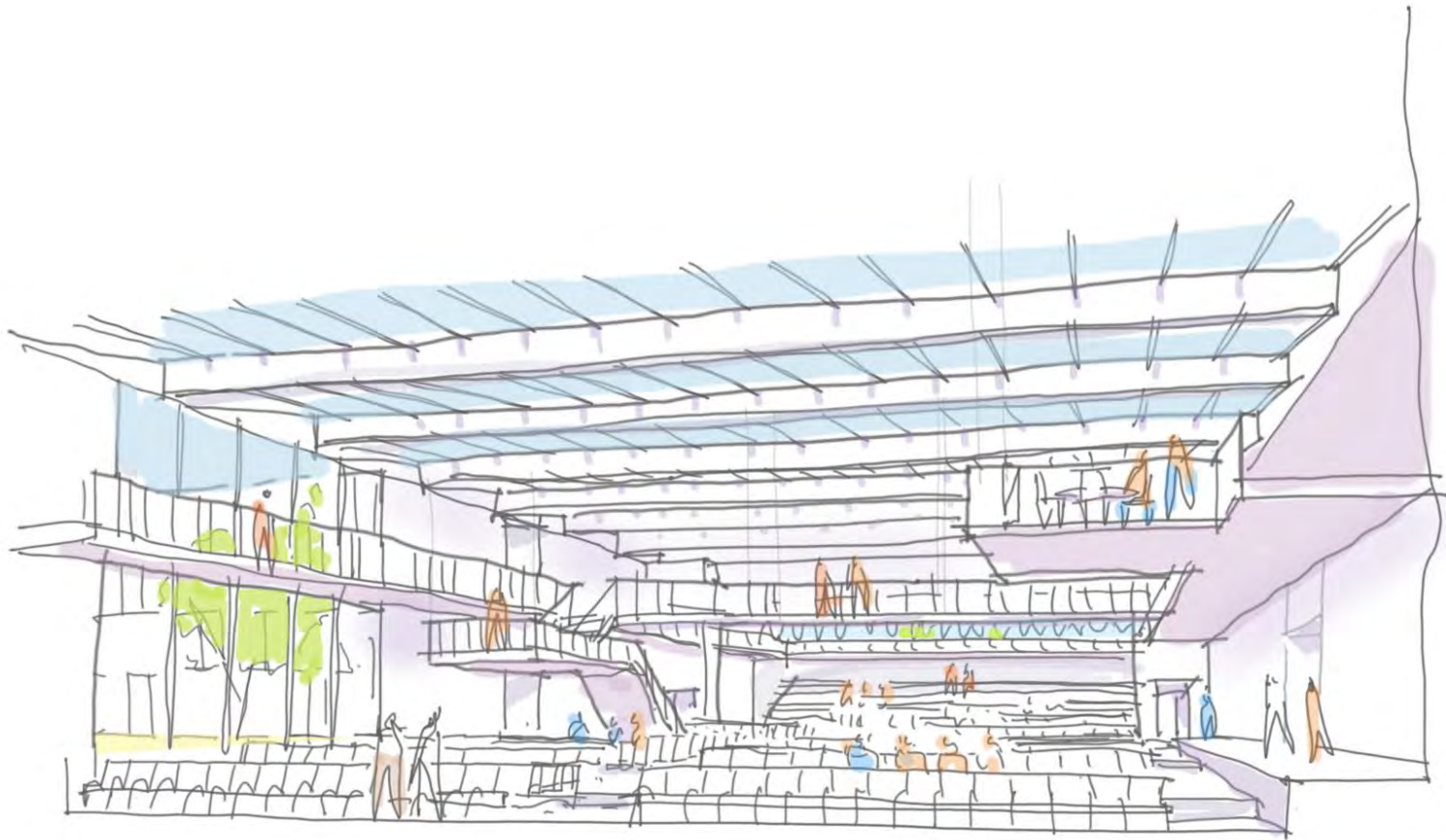




# Pre-Concept D - 'Butterfly': Exterior Sketch Concept

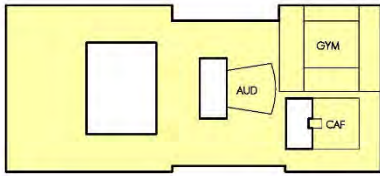


# Pre-Concept D - 'Butterfly': Interior Sketch Concept





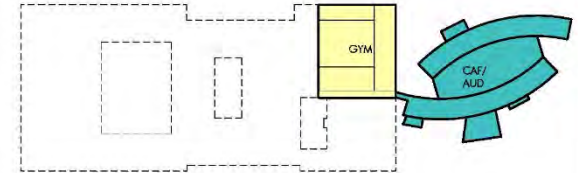
# Preliminary Design Program (PDP) Phase Pre-Concept Options Matrix



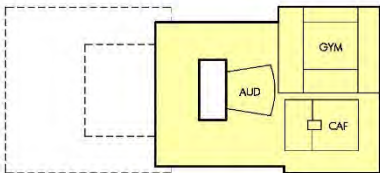
OPTION 0.0 - EXISTING



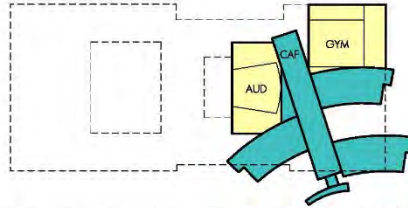
OPTION A - ADD/RENO



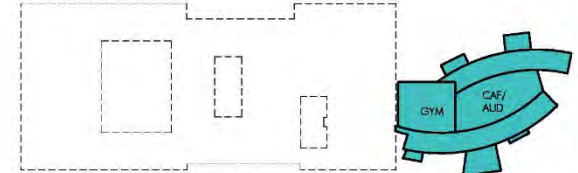
OPTION C.1 - FOLDED HANDS ADD/RENO



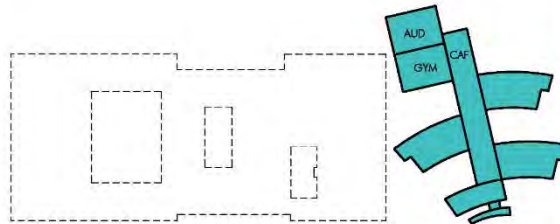
OPTION 0.1 - ADD/RENOVATION



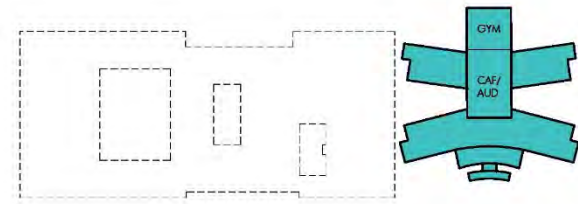
OPTION B.1 - TREE BRANCHES ADD/RENO



OPTION C.2 - FOLDED HANDS



OPTION B.2 - TREE BRANCHES



OPTION D - BUTTERFLY