

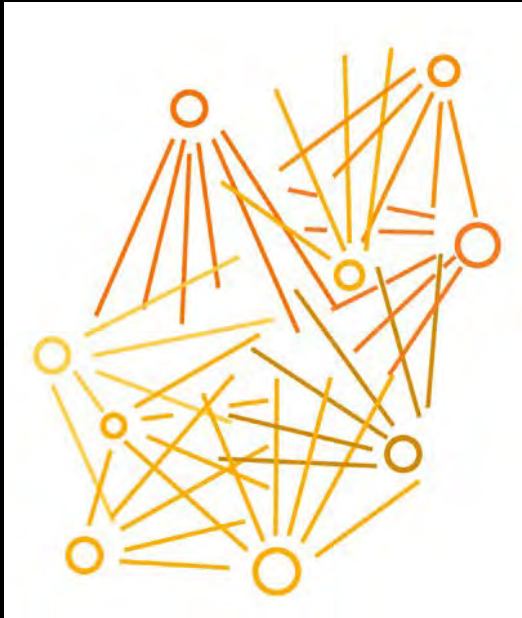
FULLER MIDDLE SCHOOL FEASIBILITY STUDY

School Building Committee
20 November 2017

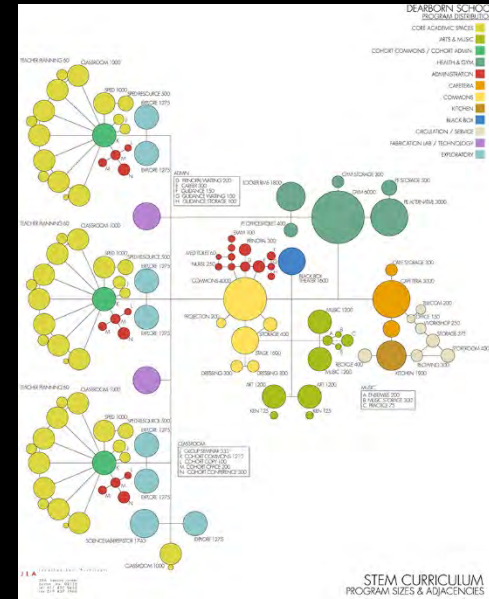
Educational Program Update
Swing Space Test Fits
Site Analysis
Pre-Concept Alternatives



21st Century Middle School Teaching and Learning:



Student Driven
Web Complimentary
Collaboration-Based



21st Century Middle School Teaching and Learning

Space Principles

Small Scale
Collaborative
Teaching Collaborative
Learning
Interdisciplinary
Content Project Based
Learning
Visible Learning
Flexible Learning
Outdoor Learning
Community
Engagement

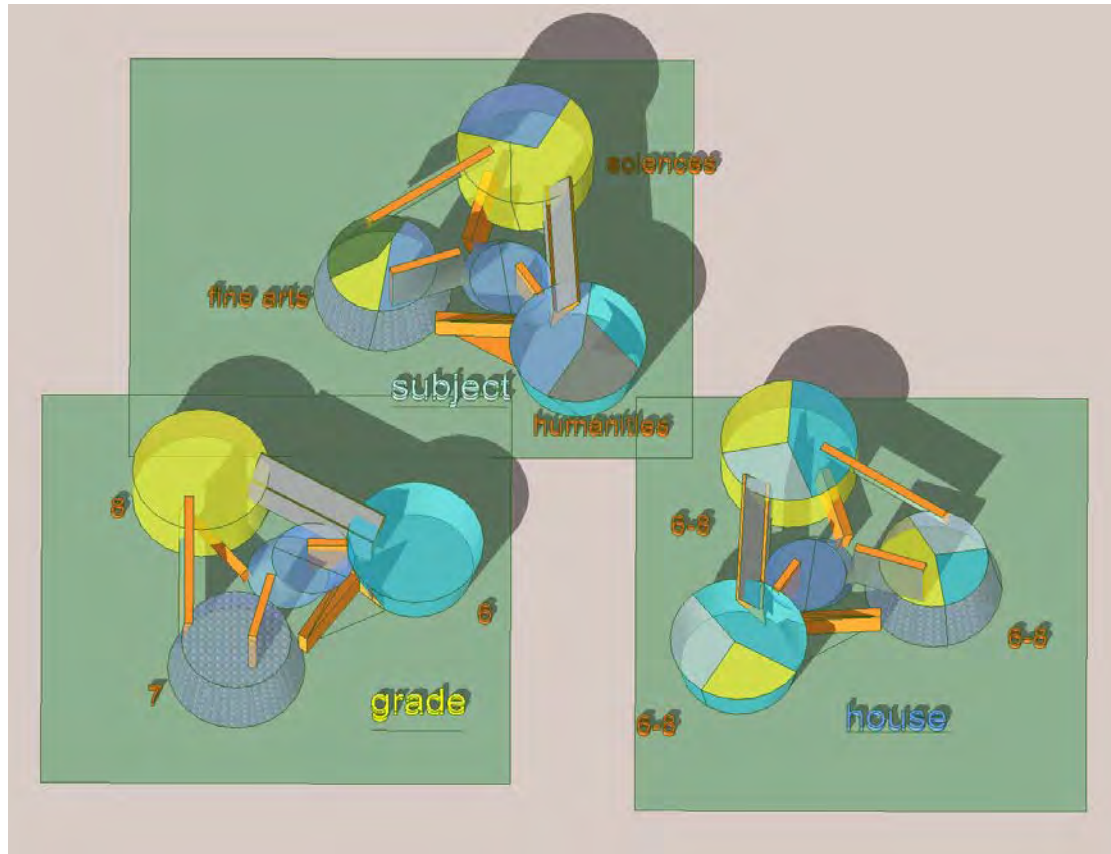


Space Initiatives

Ubiquitous Learning
Agile, Varied Scale Classroom
Specialized Learning Spaces
Team Teaching
STEAM Exploratory
Maker Space
Visible Teacher Office
Small Group Collaboration Spaces
Community Collaboration Spaces

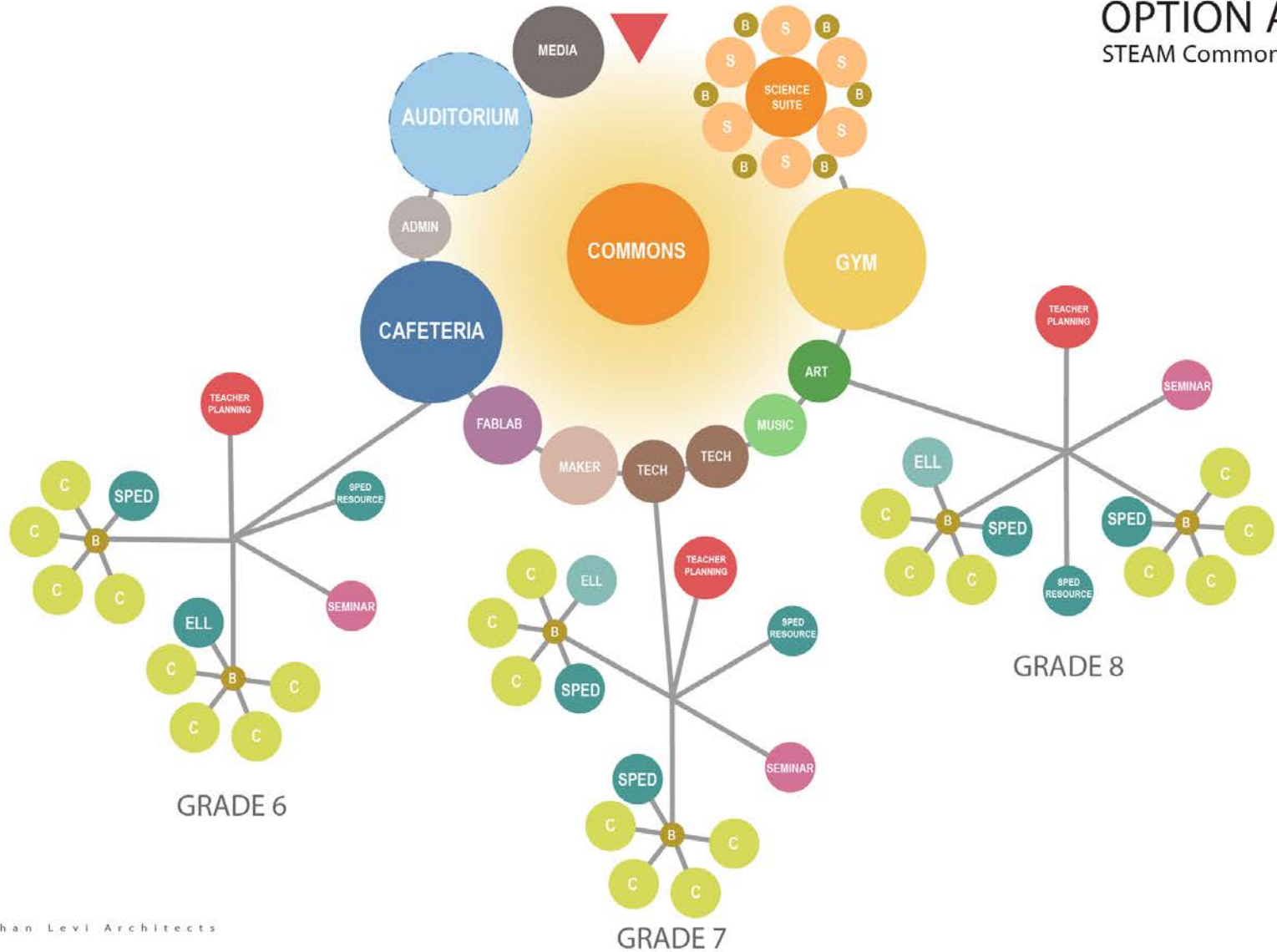


Learning Communities



Program Diagram Option A

OPTION A STEAM Commons

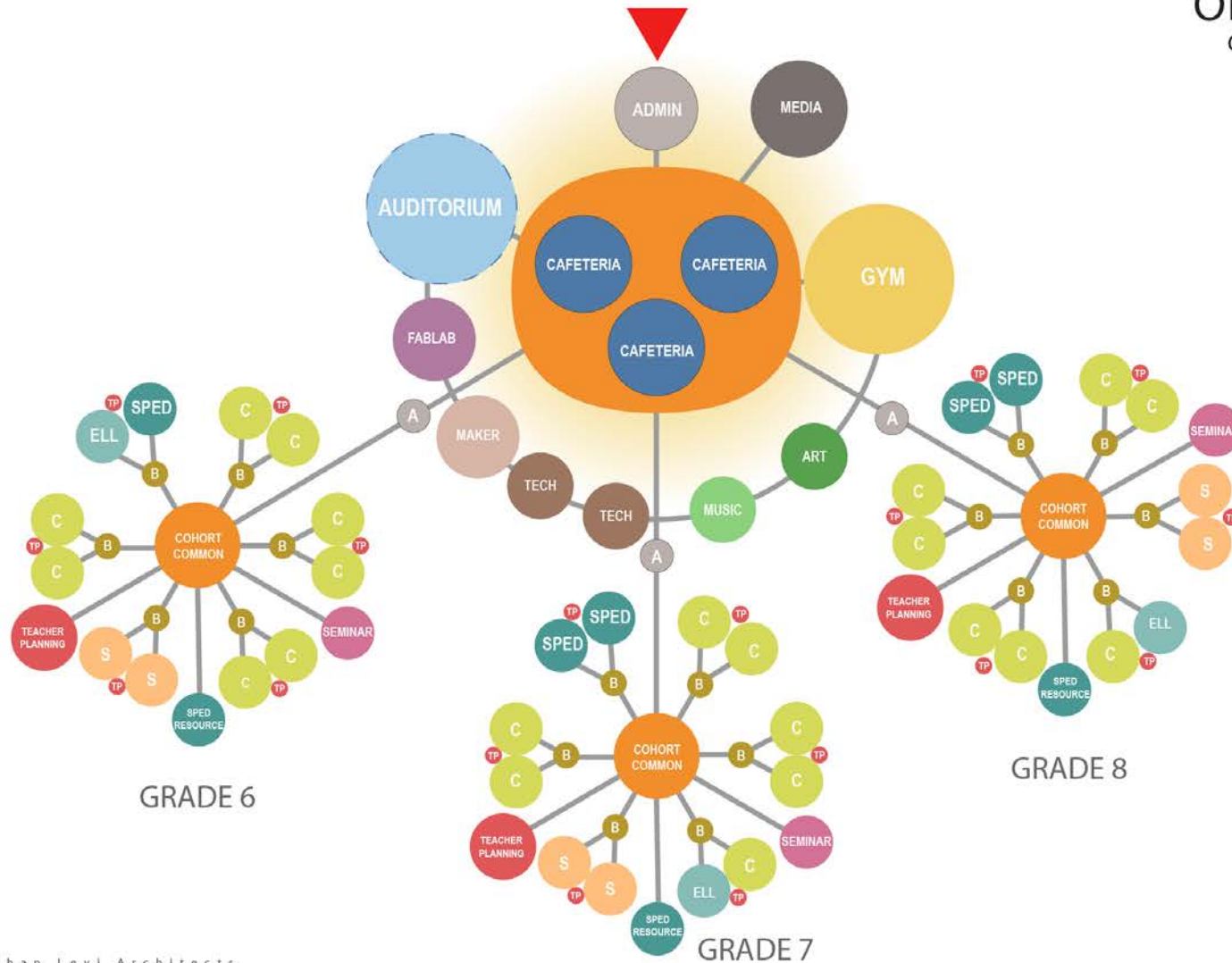


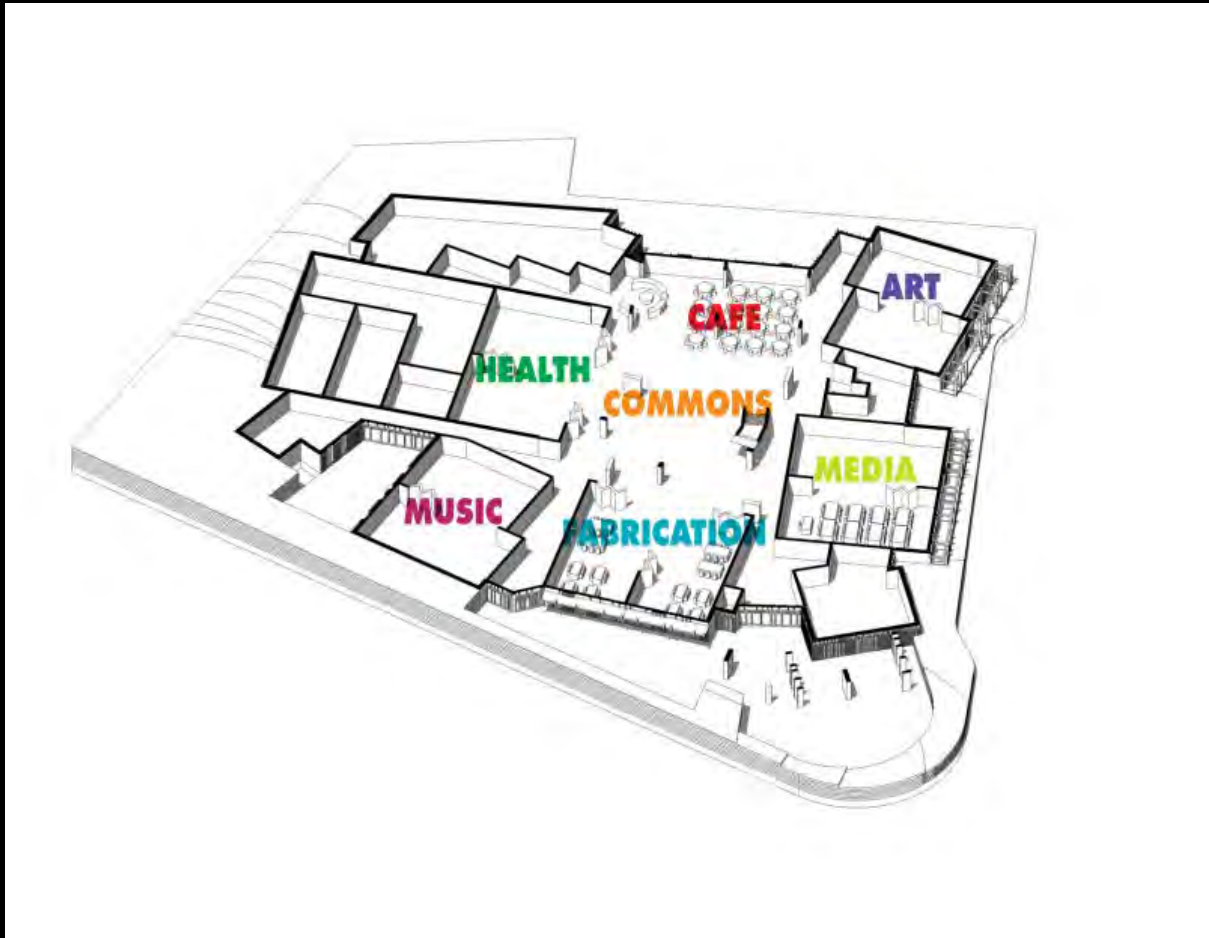
STEAM Exploratory



Program Diagram Option B

OPTION B
Grade Cohorts

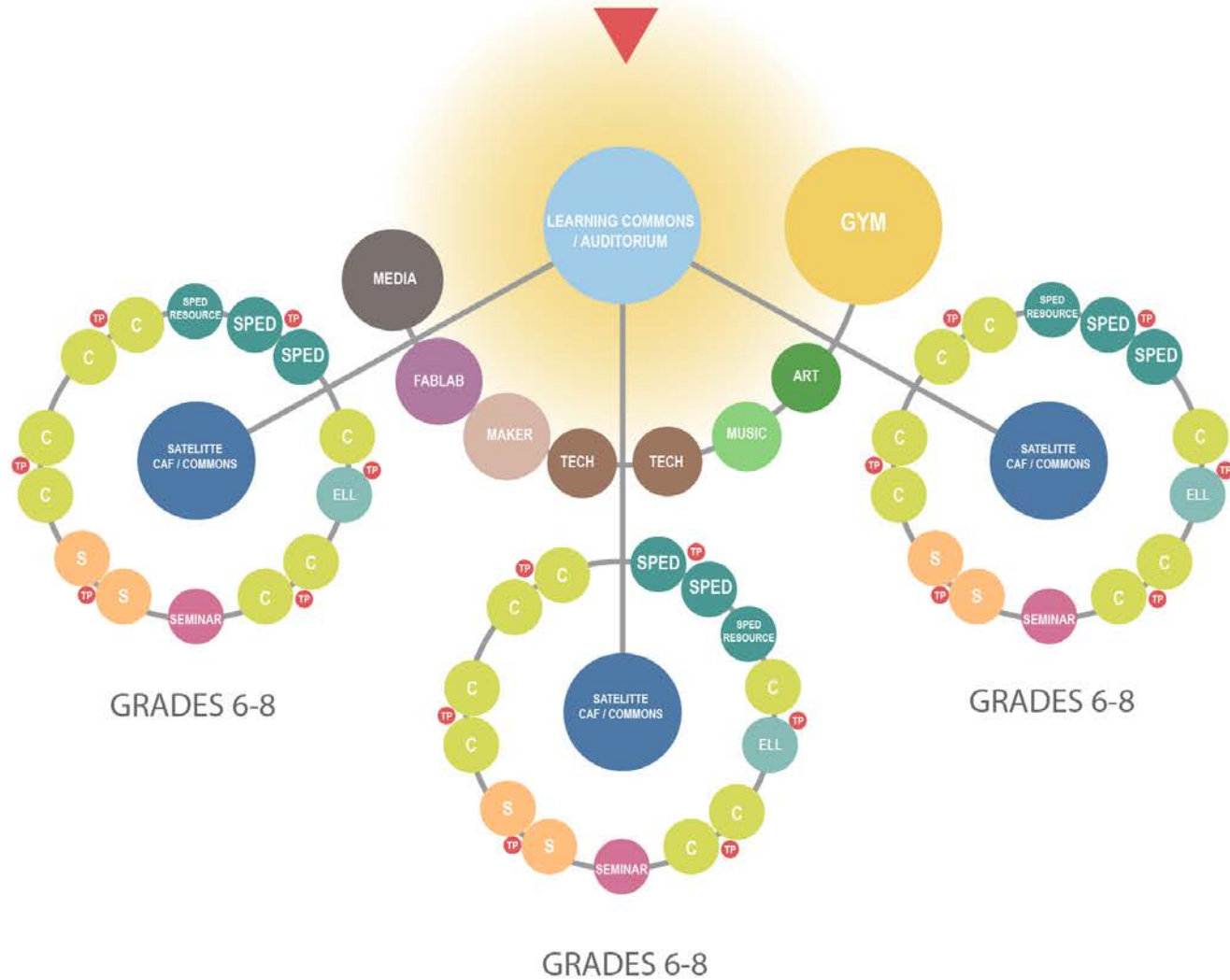




Level 1 Learning Commons Cut Away

Program Diagram Option C

OPTION C
House Model



Construction Phase Swing Space Options

Assumption: 530 students, Approx. 80,000sf Minimum

A - Move students to TBD School or Town Property

B - Move students to either all or portion of Farley

C - Move students to temporary modular facility on site

D - Retain students in reduced footprint portion of Fuller with temporary reno.

D.1 - Retain students in Fuller as is (new footprint in East parking)

Fuller Swing Space Test Fit

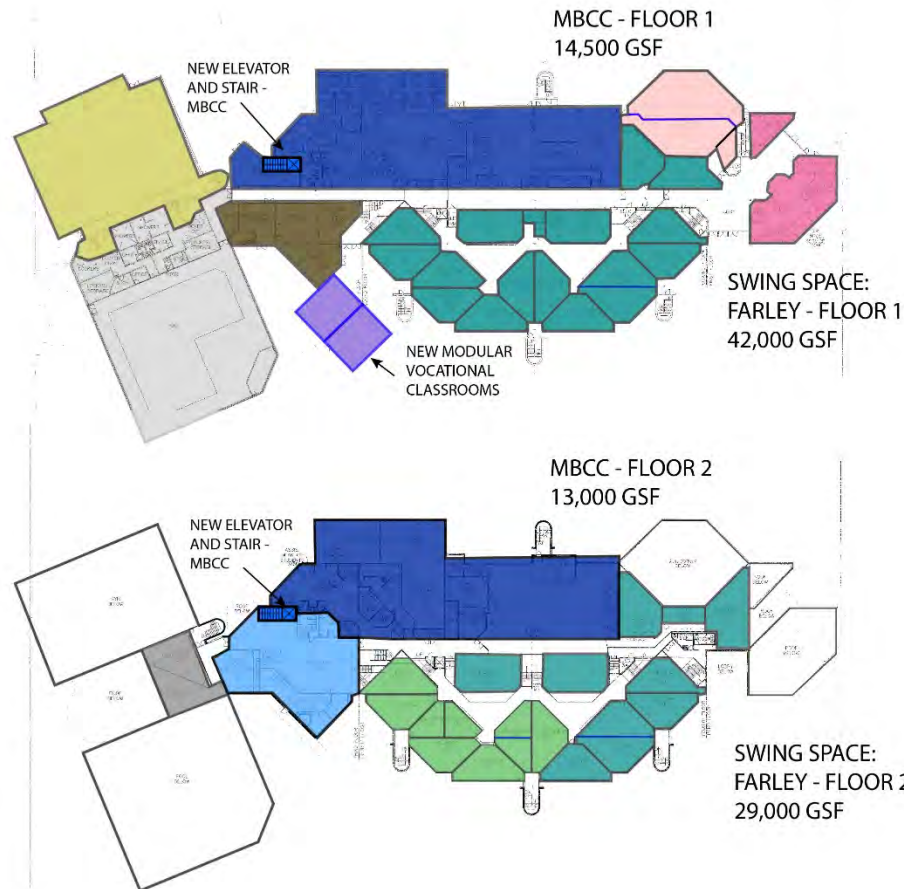


- CORE ACADEMIC SPACES
- SPECIAL EDUCATION
- ART & MUSIC
- VOCATIONS & TECHNOLOGY
- HEALTH & PHYSICAL EDUCATION
- MEDIA CENTER
- DINING & FOOD SERVICE
- MEDICAL
- ADMINISTRATION & GUIDANCE
- CUSTODIAL & MAINTENANCE

- DEMO
- MBCC

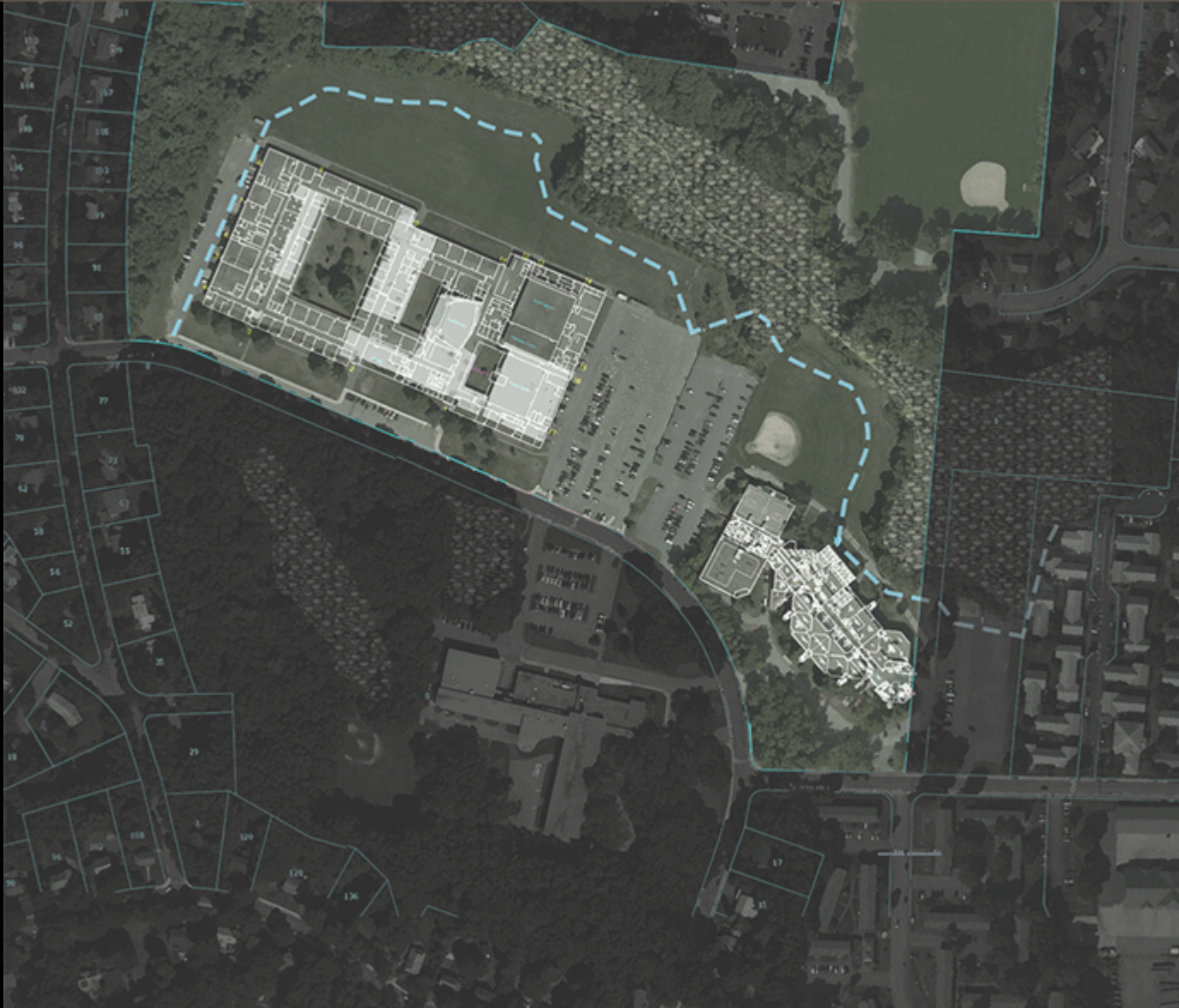
SWING SPACE:
FULLER SCHOOL
98,000 GSF

Farley Swing Space Test Fit

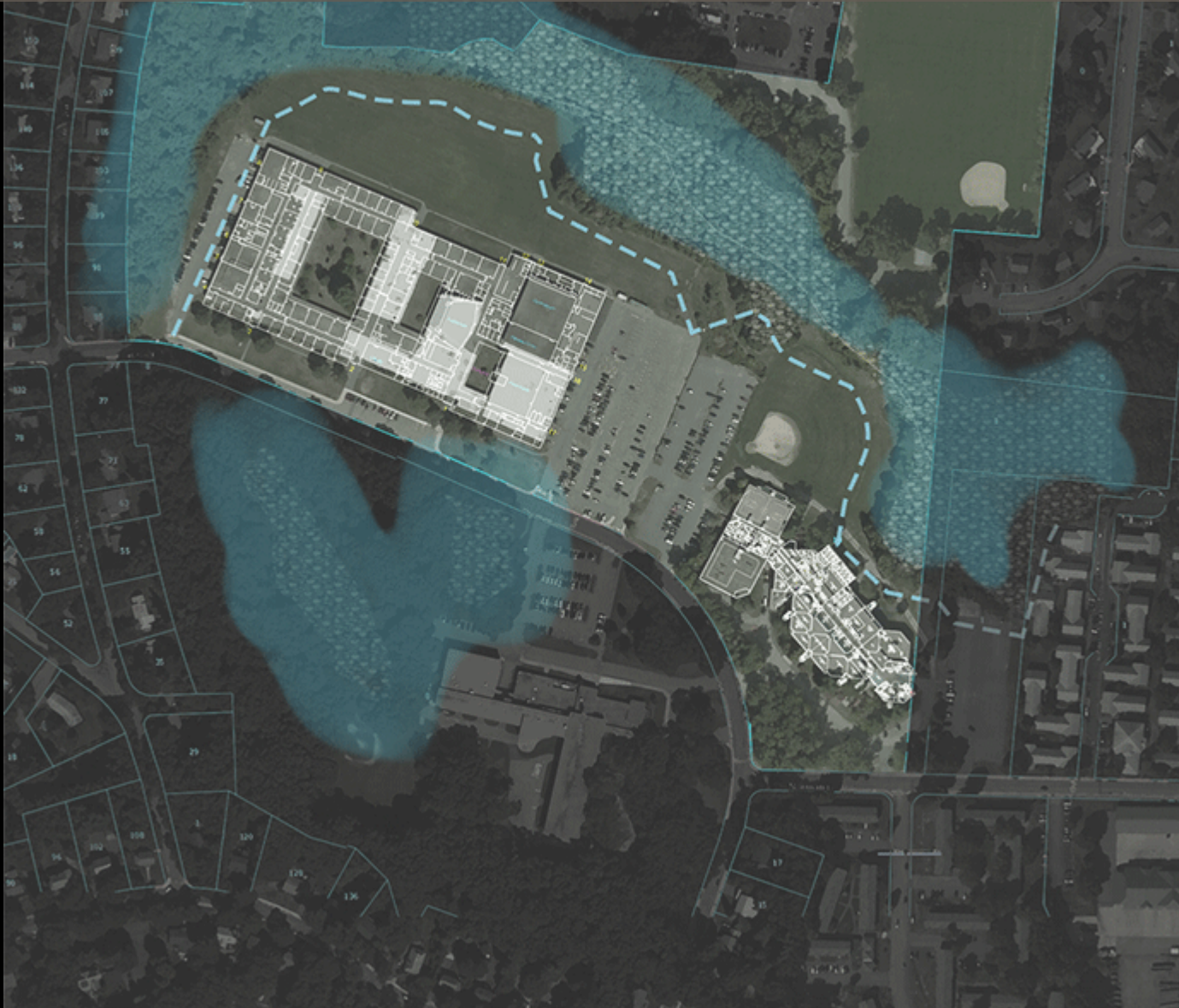


- CORE ACADEMIC SPACES
- SPECIAL EDUCATION
- ART & MUSIC
- VOCATIONS & TECHNOLOGY
- HEALTH & PHYSICAL EDUCATION
- MEDIA CENTER
- DINING & FOOD SERVICE
- MEDICAL
- ADMINISTRATION & GUIDANCE
- CUSTODIAL & MAINTENANCE
- DEMO
- MBCC

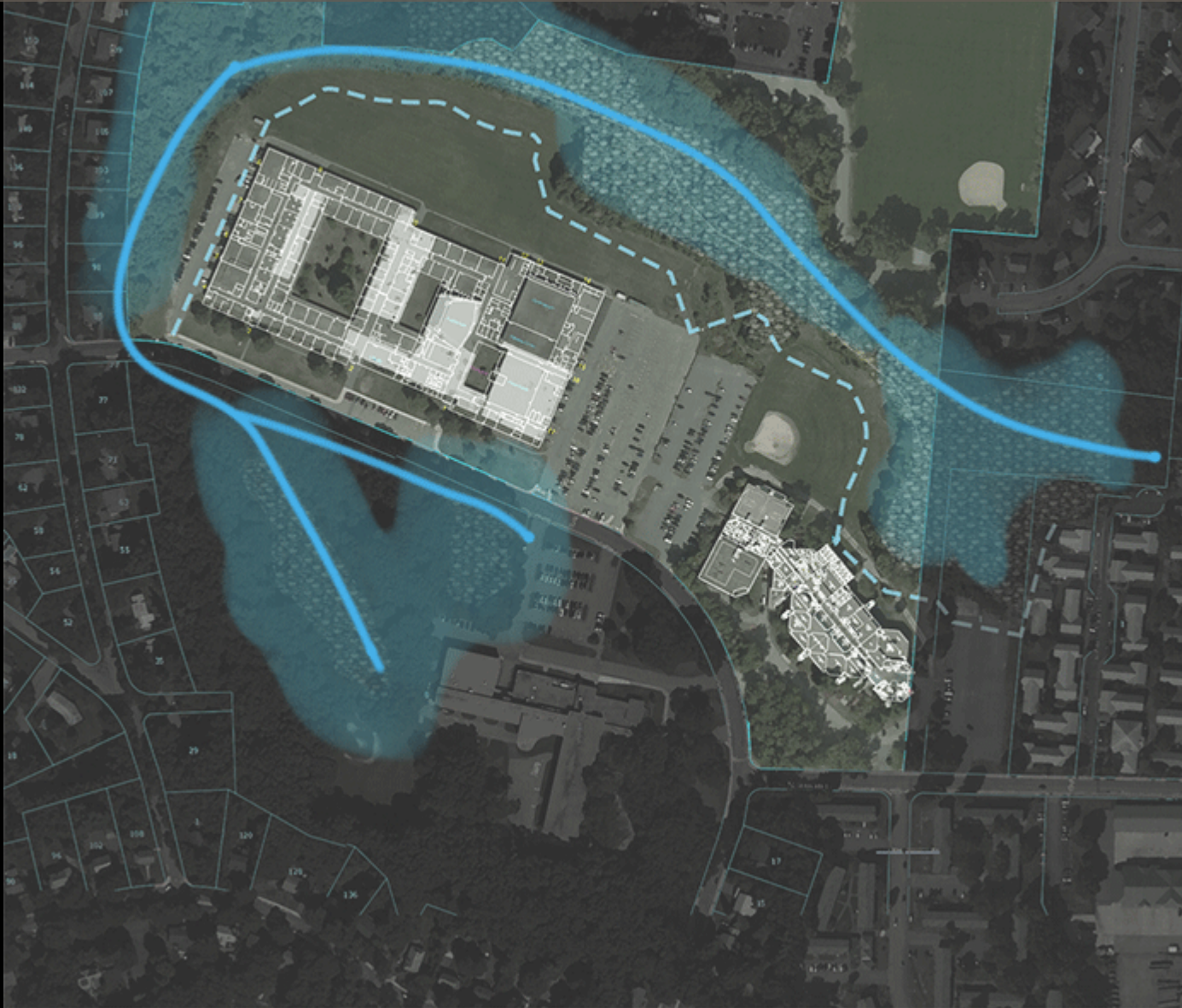
Site Analysis - Landscape



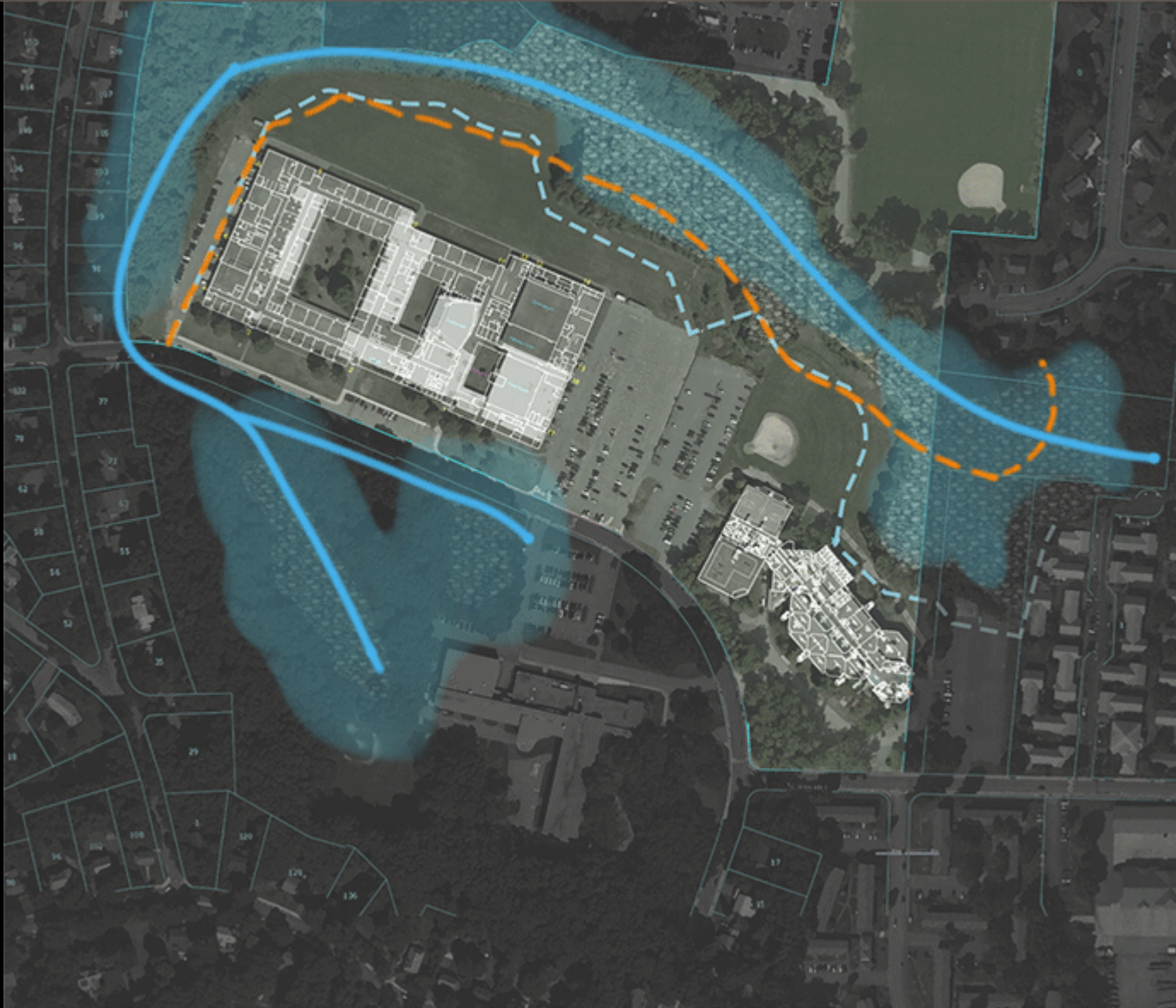
Wetlands



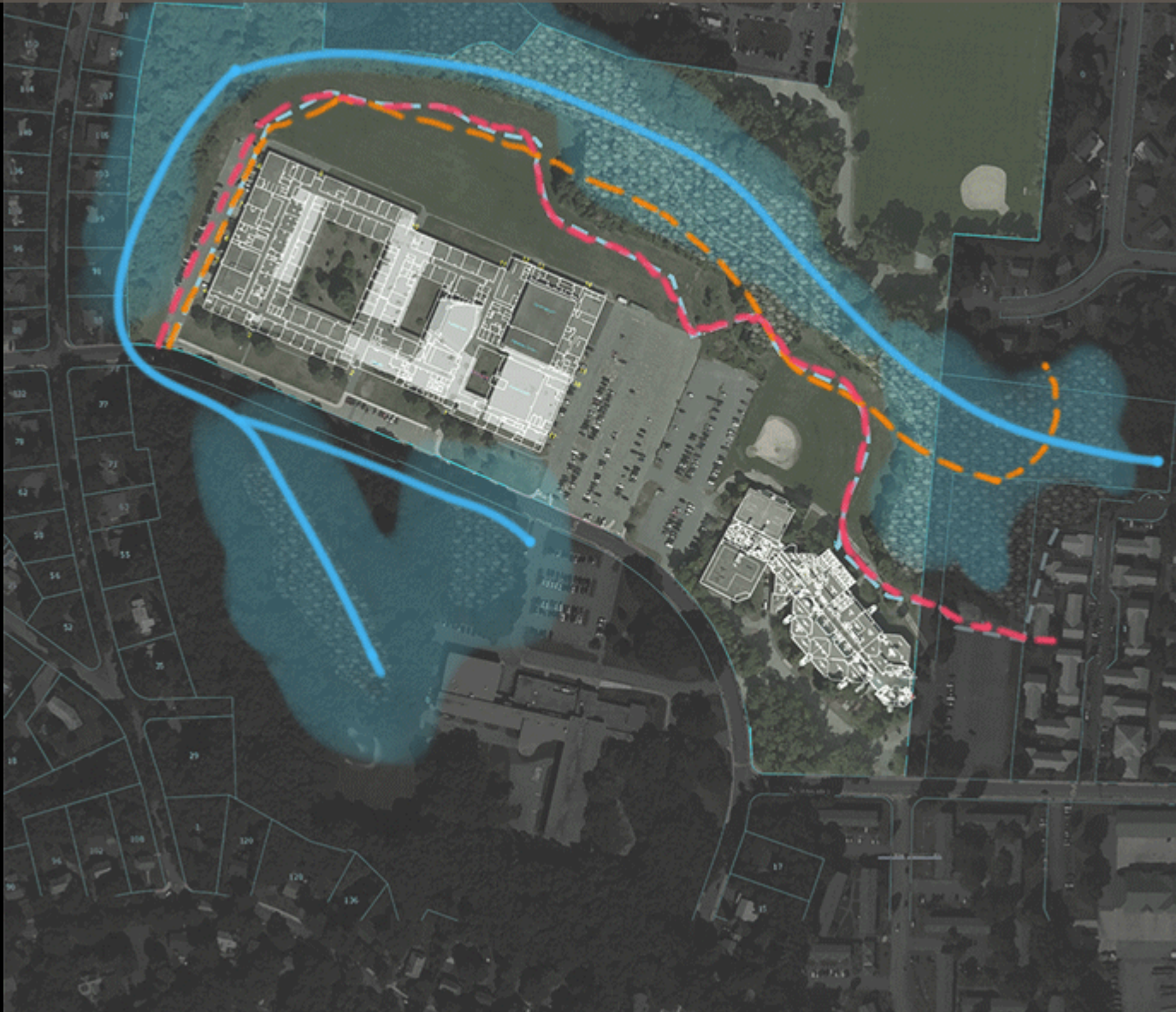
Riverways



Riverway Buffer



Wetlands Buffer



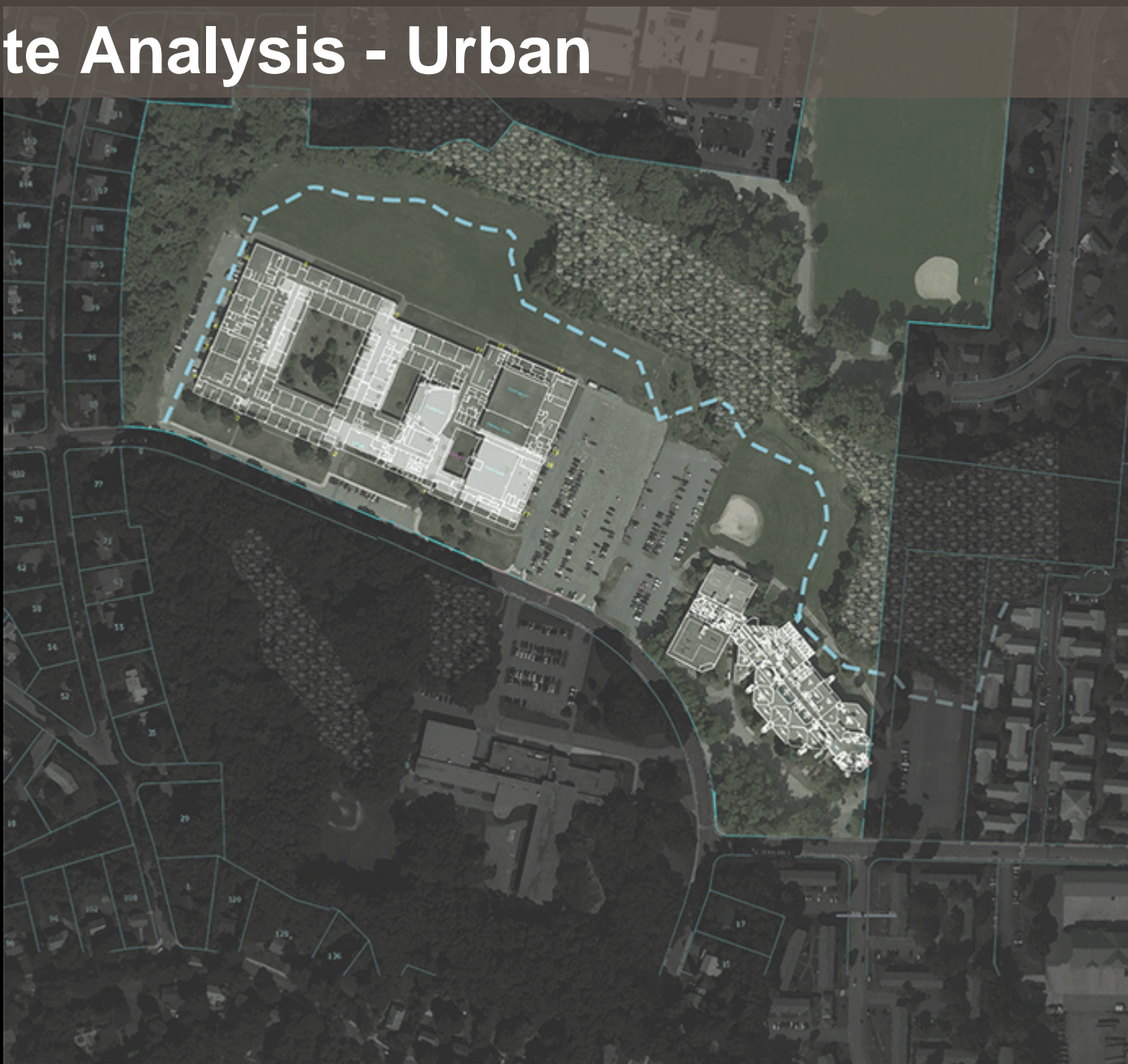
Woodlands



Solar Orientation



Site Analysis - Urban



Single Family Residential



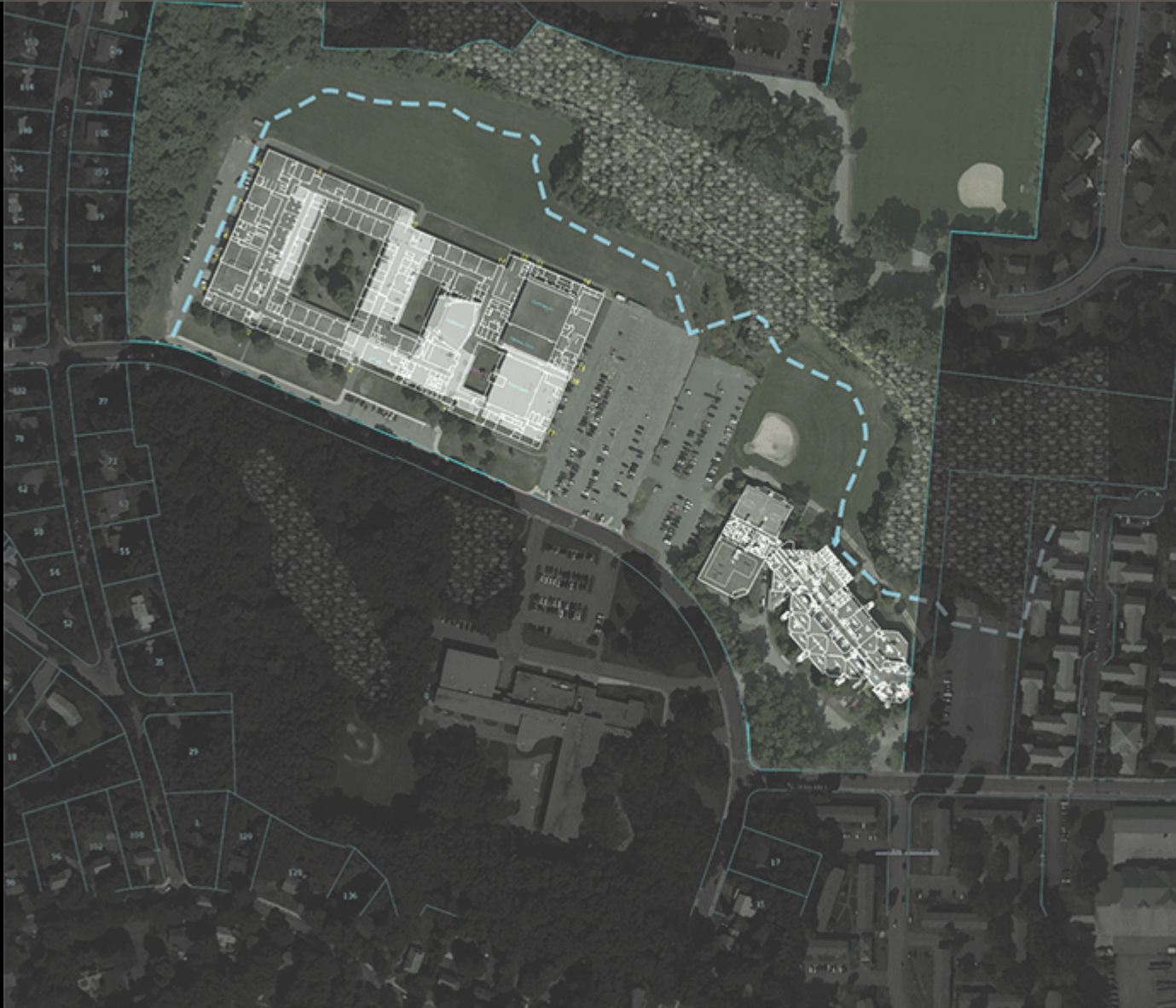
Commercial/Institutional



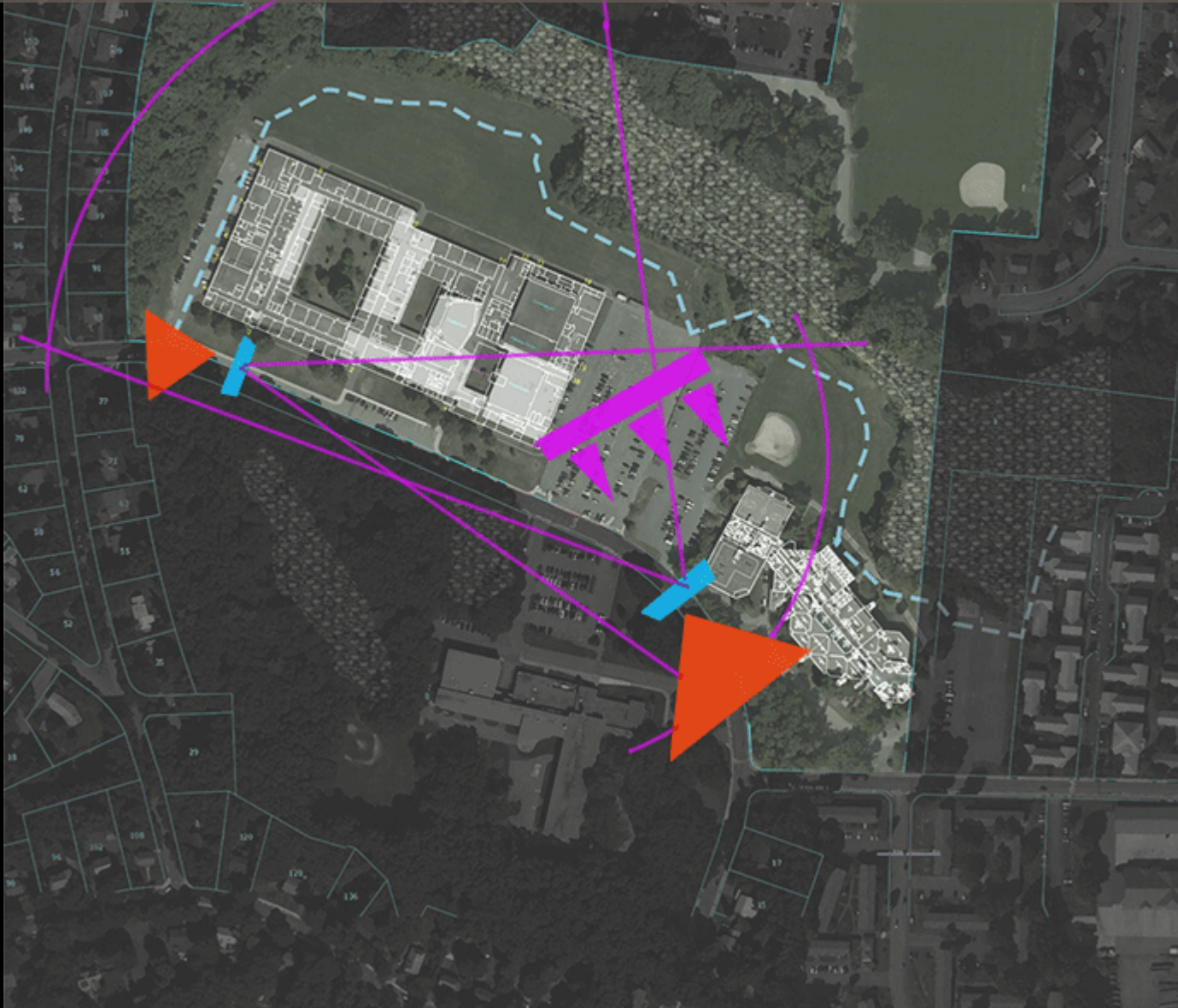
Multi-Family Residential



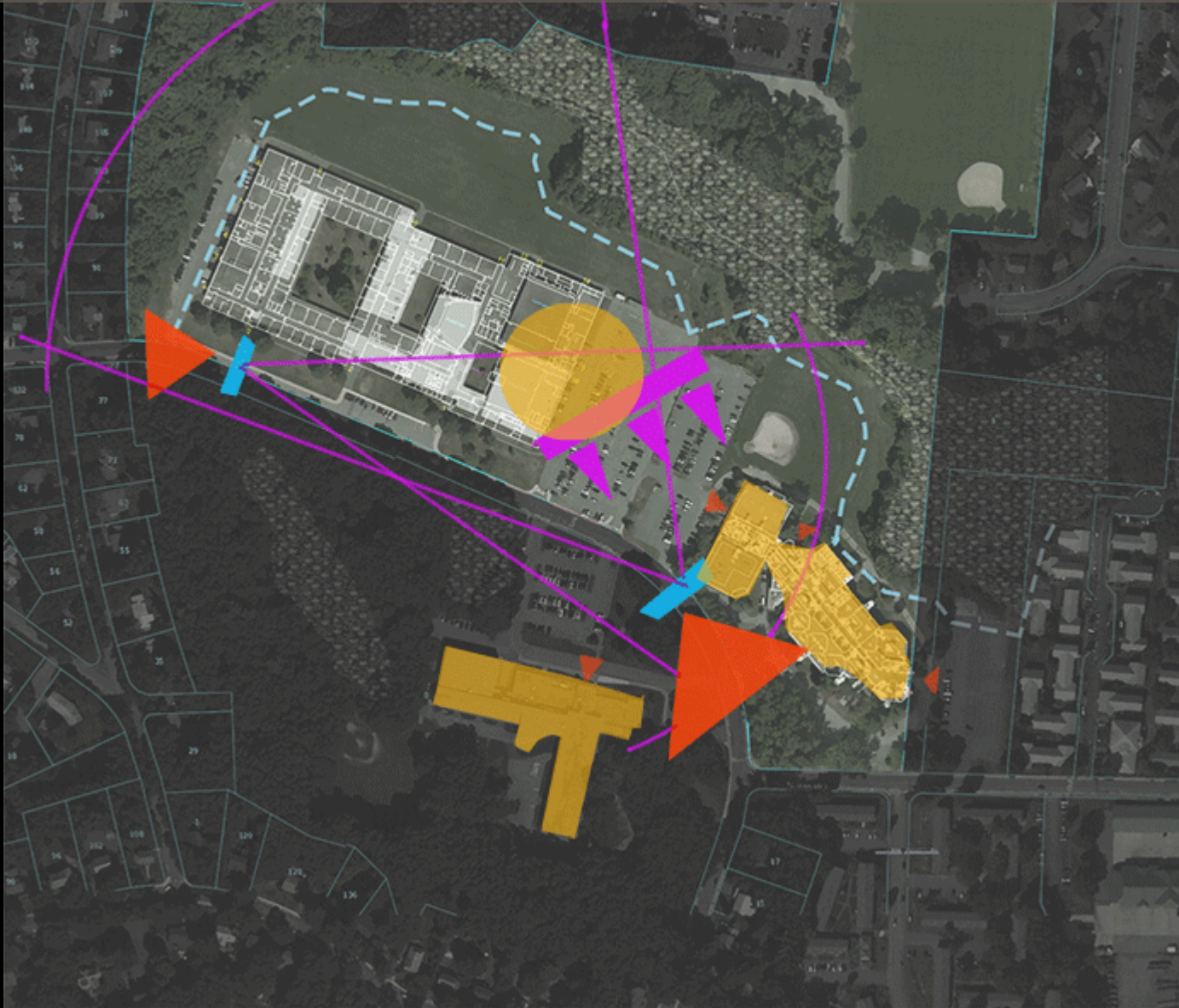
Site Analysis - Campus



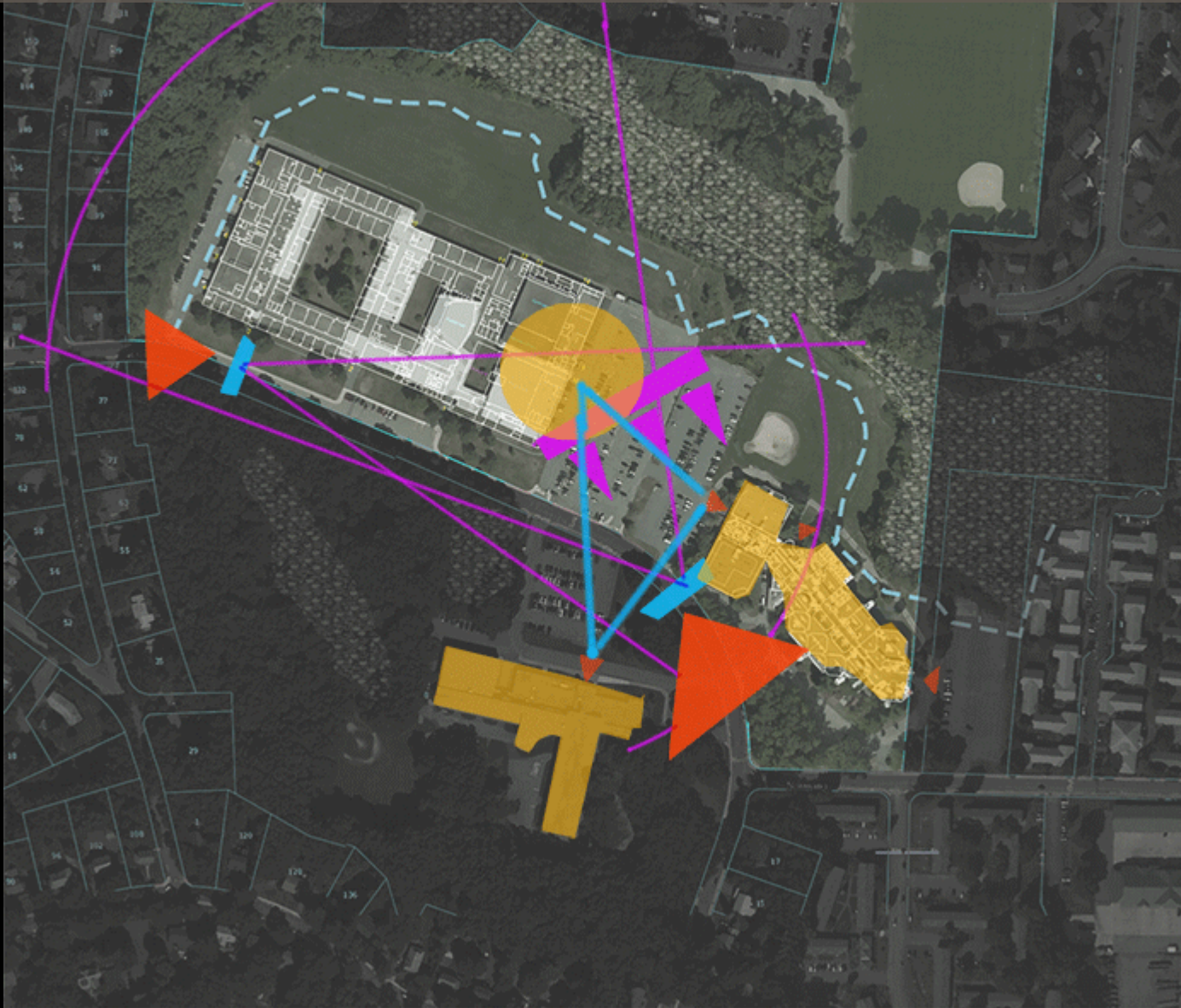
Site Thresholds/Prospects/Frontality



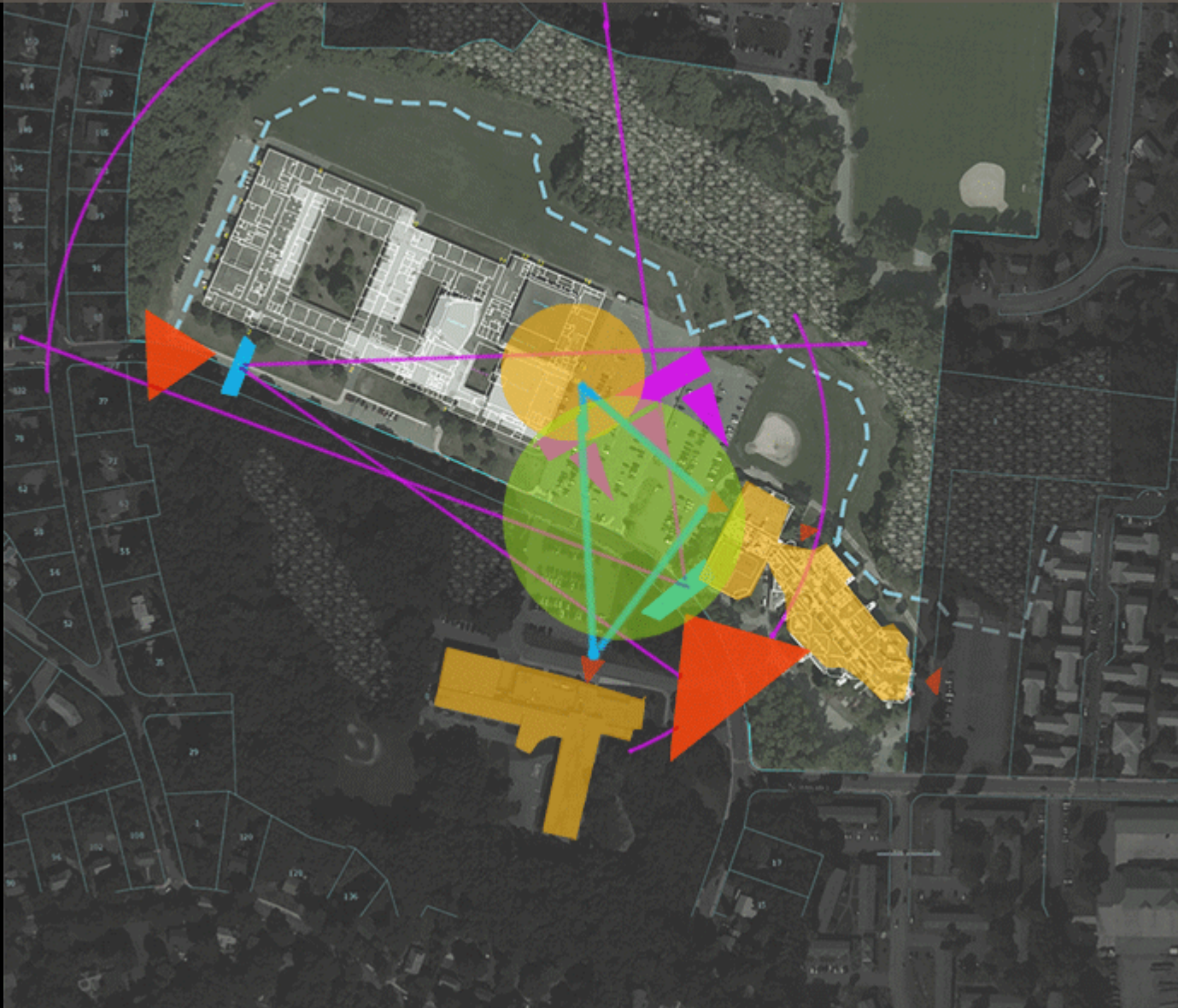
Campus Massing



Campus Connections



Campus Open Space

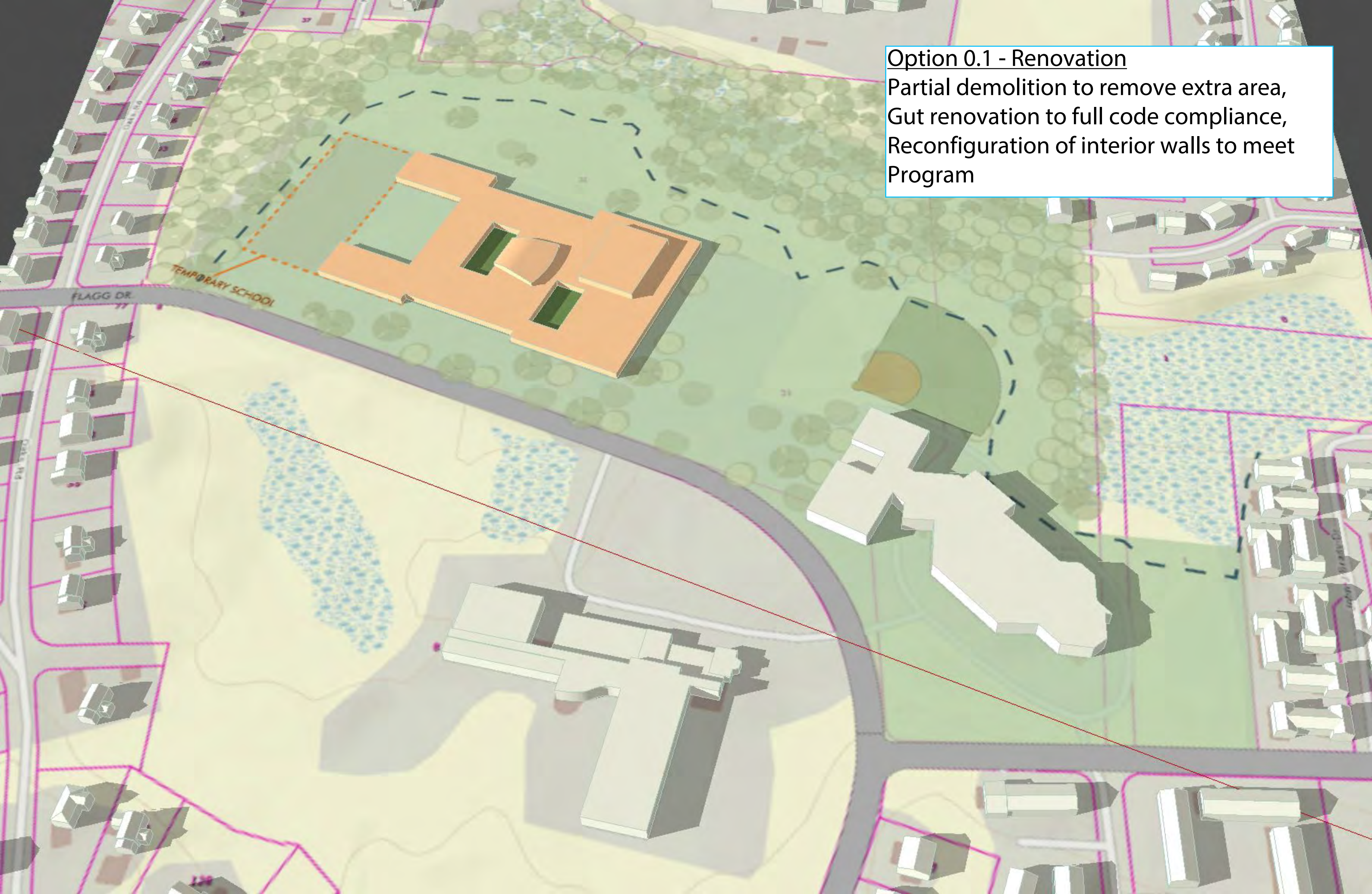


Option 0.0 - Renovation
Existing Fuller renovated
to full code compliance



Option 0.1 - Renovation

Partial demolition to remove extra area,
Gut renovation to full code compliance,
Reconfiguration of interior walls to meet
Program



Option A - Renovation / Addition

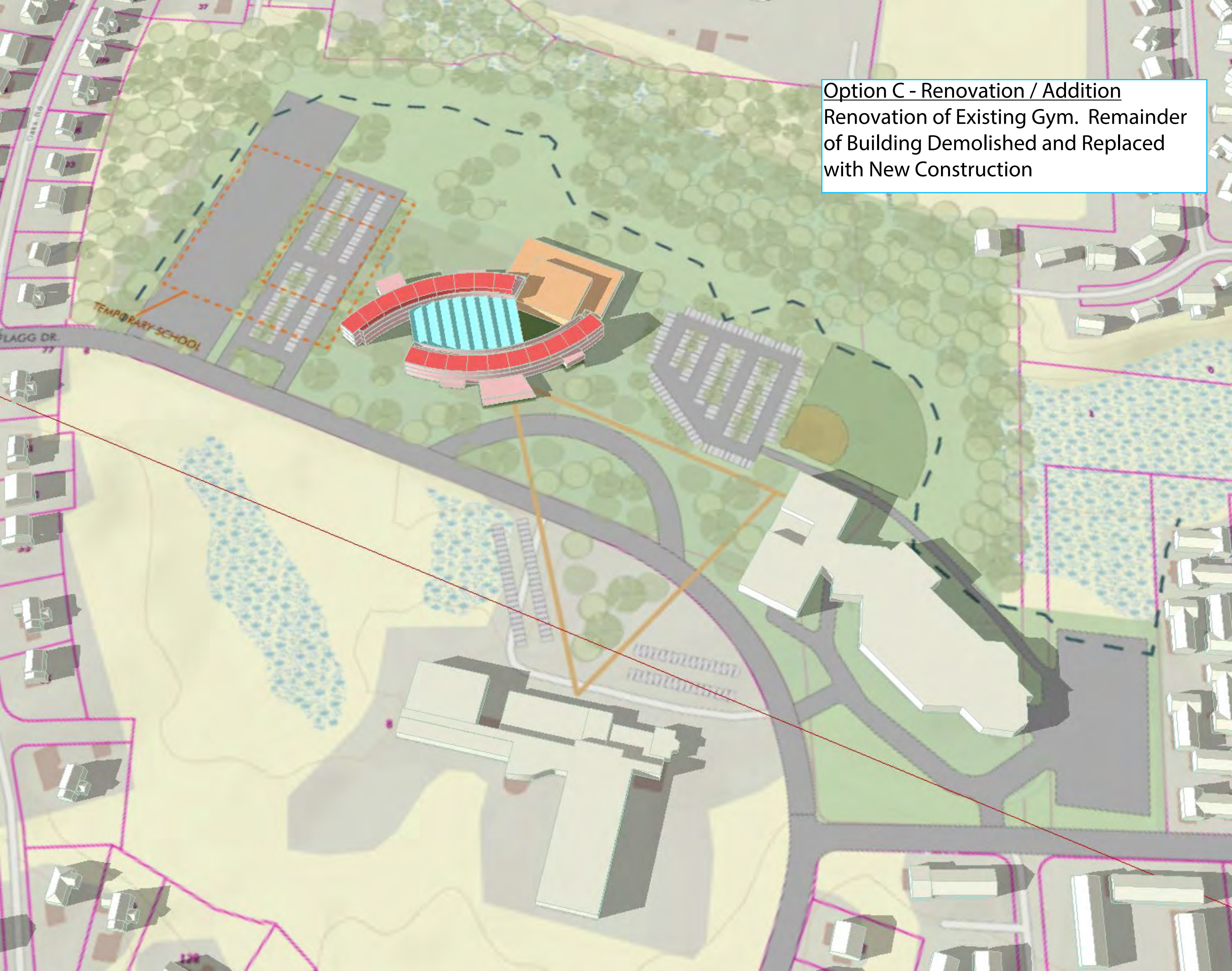
Renovation of Existing Gym and Auditorium. Remainder of Building Demolished and Replaced with New Construction



Option B - Renovation / Addition
Renovation of Existing Gym and Auditorium. Remainder of Building Demolished and Replaced with New Construction



Option C - Renovation / Addition
Renovation of Existing Gym. Remainder
of Building Demolished and Replaced
with New Construction



Option C.1 - Renovation / Addition
Renovation of Existing Gym. Remainder
of Building Demolished and Replaced
with New Construction



Option D - All New Construction

