

Framingham  
Fuller Middle School

School Building Committee  
December 14, 2020



# Furniture, Fixtures and Equipment Scope

## Fuller Middle School



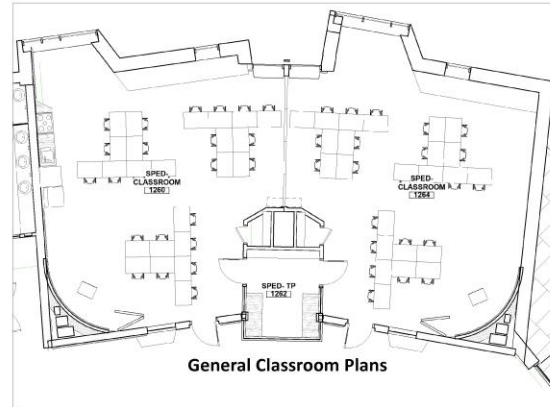
Student Desk



Student Chair



Flip Top Table



General Classroom Plans



Teacher Office Wardrobe



Teacher Office Desk



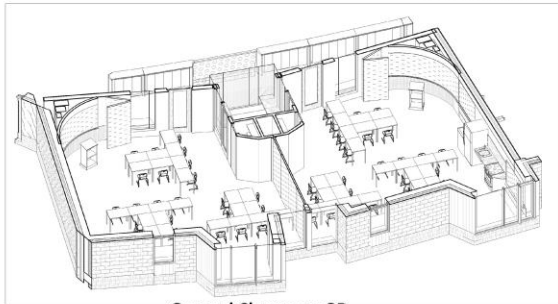
Teacher Chair



Lounge Seat



Mobile Low Storage Cabinet



General Classroom 3D



Teacher Podium



Teacher Stool

Colors and finishes have not been decided at this time



# Technology Procurement Scope

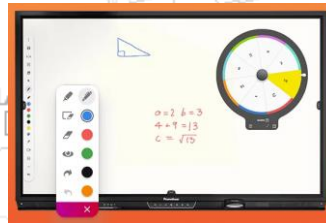
Wall Mounted Telephone



Document Camera



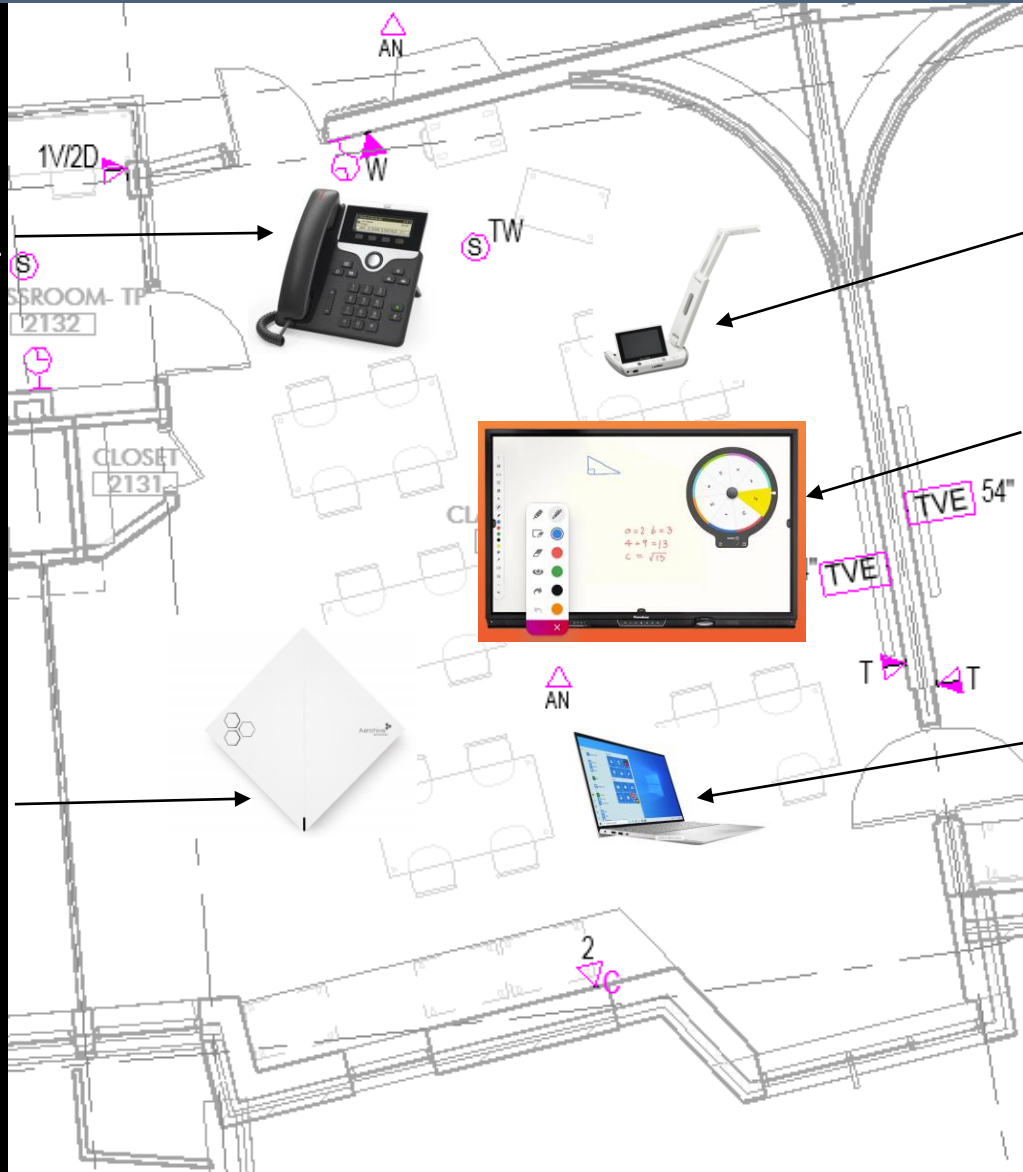
Interactive Display



Teacher Laptop



Wireless Access Point



# Furniture, Fixtures and Equipment Cost Estimate

## Smallwares

Main Office	\$665.80
Guidance/DH Suites	\$158.99
Classrooms	\$2,117.88
Art	\$6,588.58
Auditorium	\$11,213.06
Drama	\$1,424.61
ELA	\$171.02
ESL	\$662.86
PE	\$23,455.01
Health	\$2,000.00
Math	\$5,921.99
Media Center	\$5,776.77
Medical Office	\$14,585.54
Music	\$50,934.75
Science	\$17,351.35
Special Ed.	\$18,077.73
SST	\$2,227.35
Tech Ed/Maker	\$89,900.00
Custodial & Grounds	\$151,335.24
Kitchen Smallwares	\$12,000.00
Smallwares Total:	\$416,568.50

## Furniture

Section 101 Miscellaneous Furniture	\$477,184.00
Section 102 Office Furniture	\$365,300.00
Section 103 Library Shelving	\$17,600.00
Section 104 Metal Storage Shelving	\$10,250.00
Section 105 Cafeteria Tables	\$65,600.00
Furniture Total:	\$936,534.00

Total:	\$1,353,102.50
FF&E Estimate:	\$1,134,000.00
Delta:	\$219,102.50



# Technology Procurement Cost Estimate

## Technology Equipment

A. Network Electronics (Wireless Access Point and Network Switches)	\$ 340,000.00
B. Computer Equipment – Workstations	\$ 203,940.00
C. Computer Equipment - Peripherals (Printer, Fax Machine, Plotter)	\$ 23,040.00
D. Video Electronics	\$ 369,000.00
E. Telephone System	\$ 90,000.00

Total:	\$1,025,980.00
FF&E Estimate:	\$1,134,000.00
Delta:	(\$108,020.00)

