

Framingham
Fuller Middle School

School Building Committee October 7, 2019



Agenda

1. Review Neighborhood Meeting
2. Interior Finishes
3. Review 90% Construction Documents Estimate
4. Bid Alternate
5. Approve 90% CD Submission to MSBA
6. Construction Update

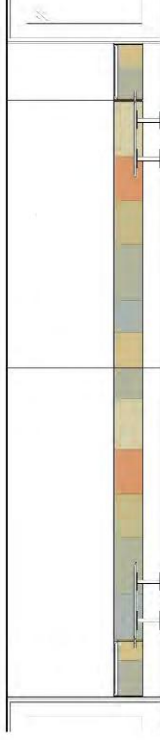
Neighborhood Meeting Update

A neighborhood meeting was held on Saturday 10/5/19. Public attendance and participation was significantly reduced from the previous community meeting (held prior to the first day of school). Only one neighbor wished to provide input – a suggestion to increase student bussing to reduce afternoon traffic.

Interior Finishes



OPTION_A



Jonathan Levi Architects

OCTOBER 7, 2019
FULLER SCHOOL



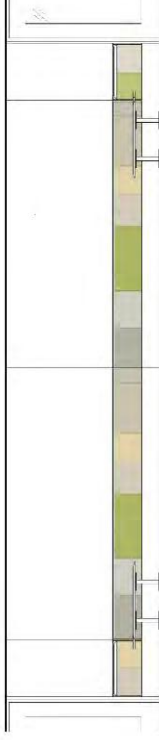
Jonathan Levi Architects

PROJECT MANAGEMENT | SMMA

Interior Finishes

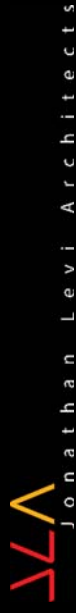


OPTION_B



JLA Jonathan Levi Architects

OCTOBER 7, 2019
FULLER SCHOOL

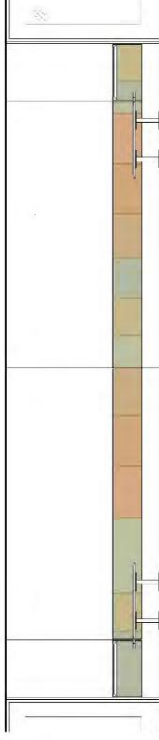


PROJECT MANAGEMENT | SMMA

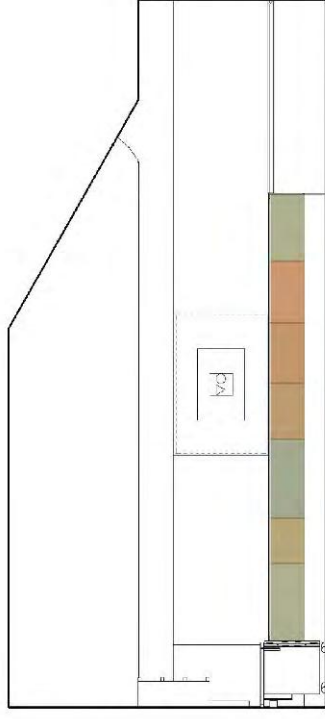
Interior Finishes



OPTION_C



JLA Jonathan Levi Architects



OCTOBER 7, 2019
FULLER SCHOOL



PROJECT MANAGEMENT | **SMMA**

JLA Jonathan Levi Architects

90% Construction Documents Cost Estimate Comparison

	CONSIGLI CONSTRUCTION 60% CD ESTIMATE 8/5/2019 (adjusted for post 60% VE Items)	CONSIGLI CONSTRUCTION 90% CD ESTIMATE 10/7/2019
EARLY SITE PACKAGE	\$10,957,843	\$10,744,643
BUILDING COST	\$66,794,345	\$57,960,776
EARLY CONCRETE AND STEEL PACKAGE		\$8,688,045
POST 60% VE	(\$487,000)	
TOTAL CONSTRUCTION COST	\$77,265,188	\$77,393,464
CONSTRUCTION BUDGET	\$77,935,429	\$77,935,429
	UNDER BUDGET	(\$541,965)



PROJECT MANAGEMENT | **SMMA**

JL Jonathan Levi Architects

Potential Bidding Alternate Item

Bid alternates are typically included to protect the district in the event that trade bids come in higher than their estimated value. Should the bids come in unexpectedly high, the less expensive alternate can be taken as part of the overall bid.

BIDDING ALTERNATE ITEMS

1. Change Learning Commons Porcelain Tile to Linoleum	DEDUCT	(\$112,000)
---	--------	-------------



PROJECT MANAGEMENT | **SMMA**

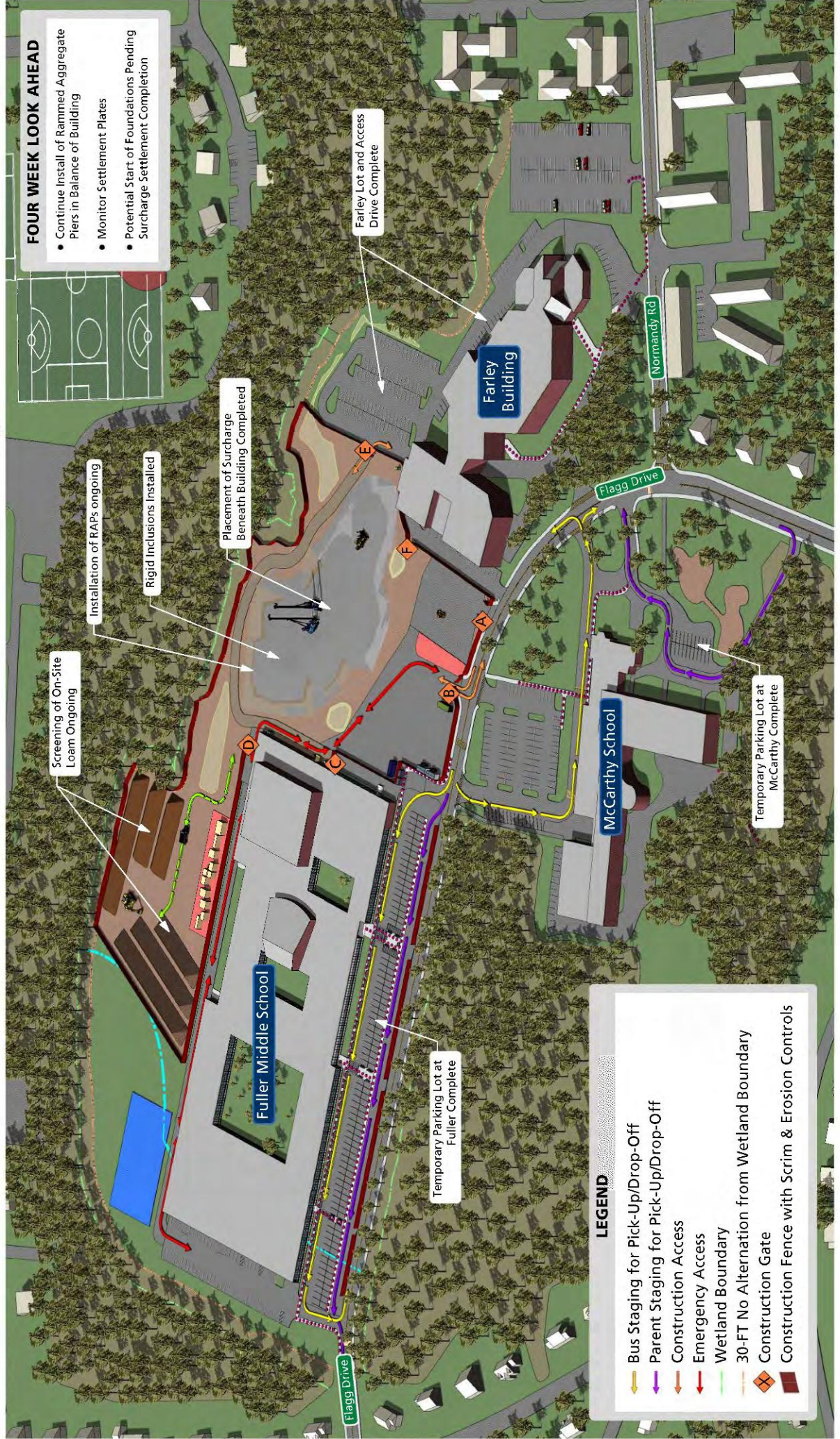
LLA Jonathan Levi Architects

Construction Update

Fuller Middle School



October Progress Updates



Construction Update

Consigli Owner Monthly Dashboard

September 2019

Fuller Middle School
31 Flagg Drive, Framingham, MA



Executive Overview

- Punch List for Phase 1 complete
- Rigid Inclusion Installation complete
- Farley Lot Light Pole Installation complete
- Surcharge/Settlement Plate Installation is complete

Billing Status



Progress Pictures



Safety		Construction Progress		RFI Response Status		Submittal Response Status	
Current Project Safety Score	98.20%	Work in Place (in Millions)	\$4,254	Overdue	2	Due within next 7 days	2
Total Man Hours to Date	15,364	Work to Complete (in Millions)	\$15,516	Due within next 7 days	0	Due over 7 days	0
Incidents to Date/Month	0	Percent Complete	21.52%	Overdue	0	Due over 7 days	0

Schedule

Project Milestones	Target	Actual	BIC	Due Date
Early Foundation & Structural Package #2 GMP	9/13/2019	9/16/2019		
Install Lightpoles at Farley Lot	9/16/2019	9/20/2019		
Rigid Inclusion Installation at Auditorium/Gym Complete	9/23/2019	9/23/2019		
Issue Masonry Bid Package	10/18/2019	Ongoing		
Full Soil Settlement Achieved	11/20/2019	Ongoing		
Bid Package #3 GMP	1/28/2020	Ongoing		
Substantial Completion, Phase 2	7/9/2021	Ongoing		

Contract Status

Original Contract Amount	\$19,696,644
Approved Change Orders	\$72,888
Current Contract Amount	\$19,769,532
Percent Complete	100% (BP2)
Buyout Bust / Savings	\$0
Buyout Bust / Savings %	0.00%

Change Orders

Verbal Approved	
Submitted	
Pending	
Total Potential Changes	
Projected Contract Amount	\$19,663,294
With Potential Changes	

Hold Status

Original Hold Budget	\$42,000
Expended to Date	\$0
Remaining Holds	\$42,000
Expended to Date	\$0
Remaining Holds	\$42,000

Contingency Status

Original Cont. Value	\$406,845
Expended to Date	\$25,000
Remaining Contingency	\$381,845
Expended to Date	\$25,000
Remaining Contingency	\$381,845

Allowance Status

Original Allow. Budget	\$309,750
Expended to Date	\$46,761
Remaining Allowance	\$263,989
Expended to Date	\$46,761
Remaining Allowance	\$263,989

Construction Update



Photo 1 – Grout being loaded for Rigid Inclusions



Photo 2 – Surcharge Fill Installation Complete

Construction Update



Photo 3 – Rammed Aggregate Piers being installed

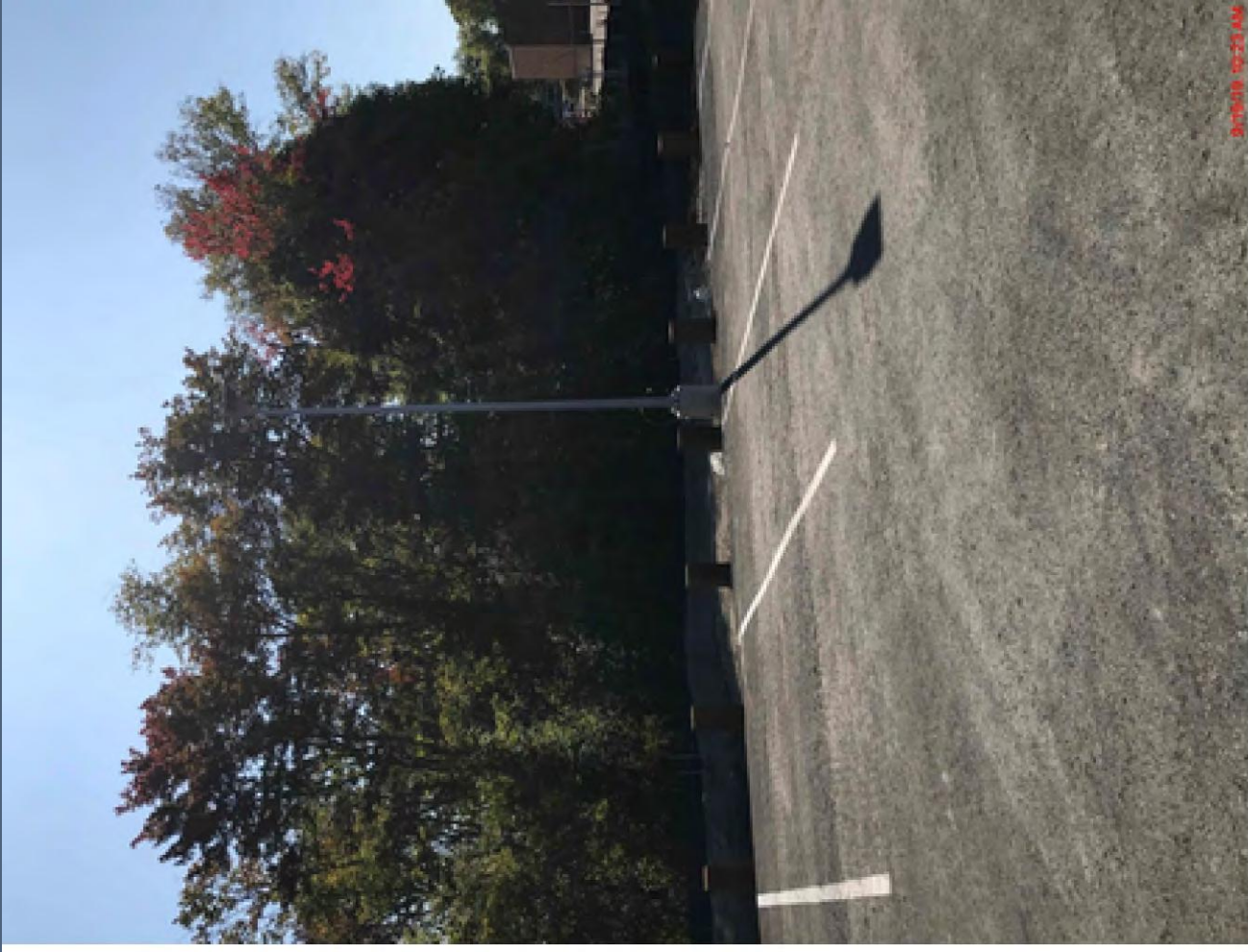


Photo 4 – Light pole Installation Complete at Farley Lot

09/20/18 09:23 AM

