

Framingham
Fuller Middle School

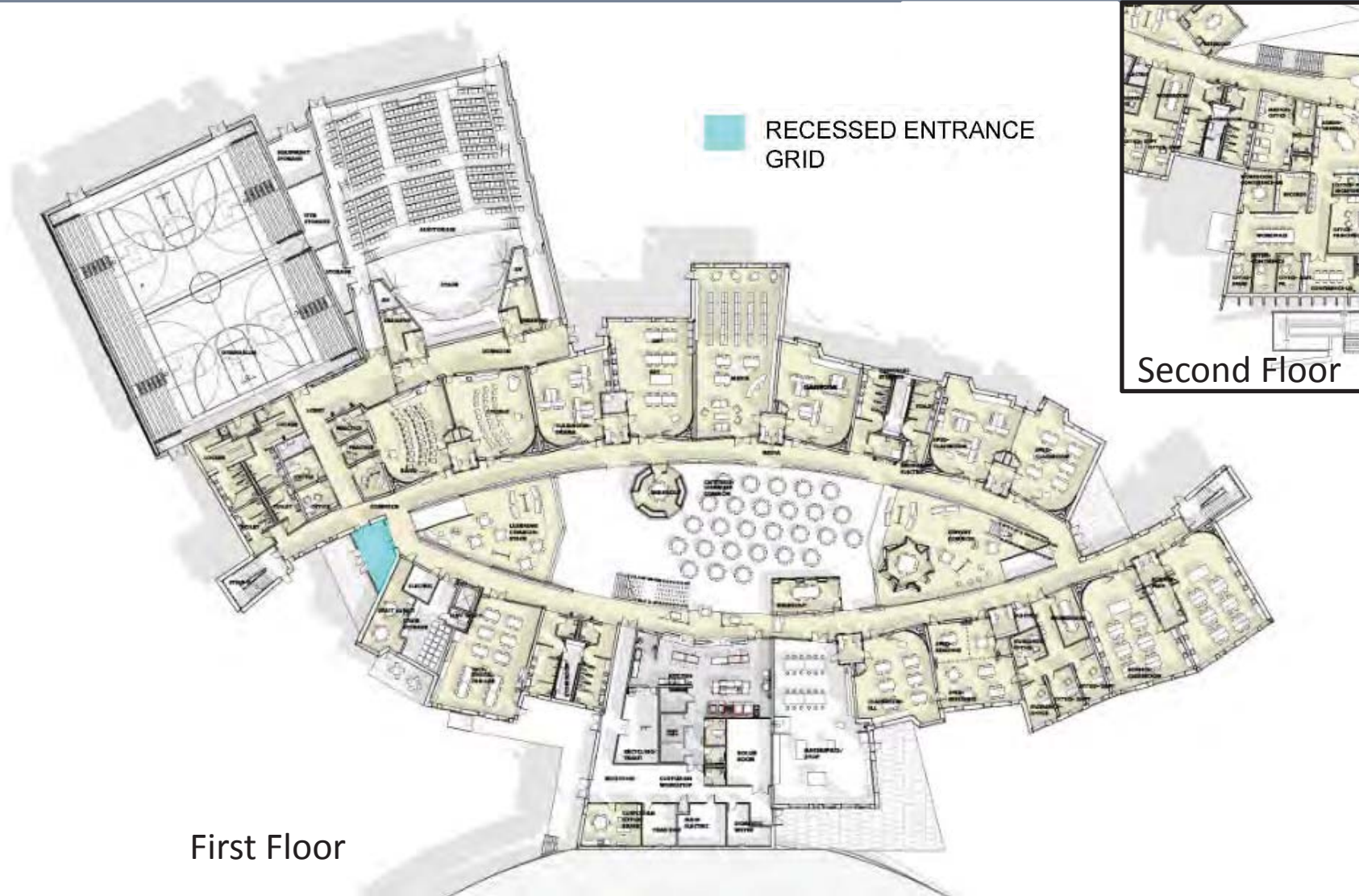
School Building Committee July 1, 2019




Jonathan Levi Architects

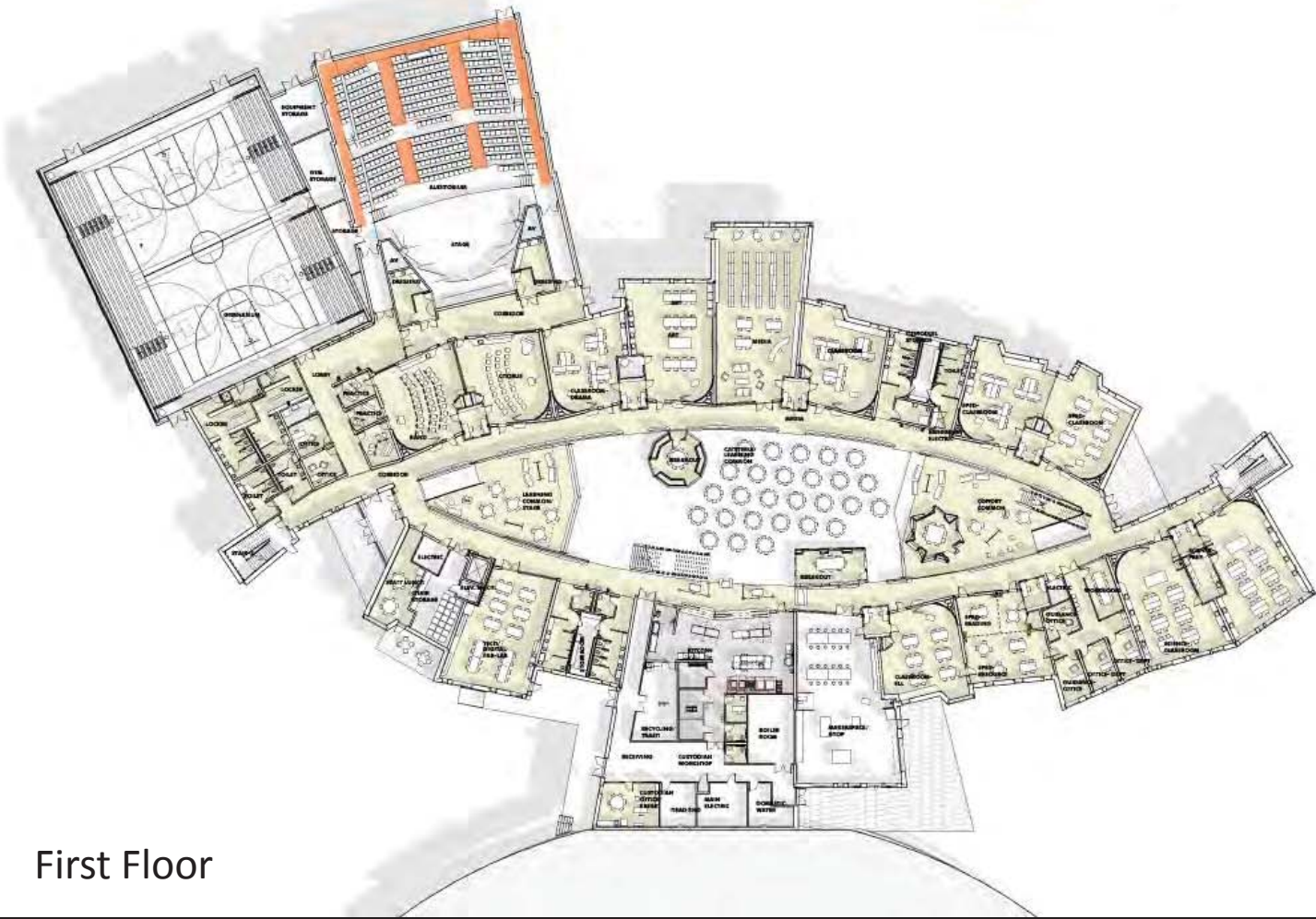
FULLER SCHOOL, FRAMINGHAM

Finishes RECESSED ENTRANCE GRID



Finishes **CARPET**

 **CARPET**

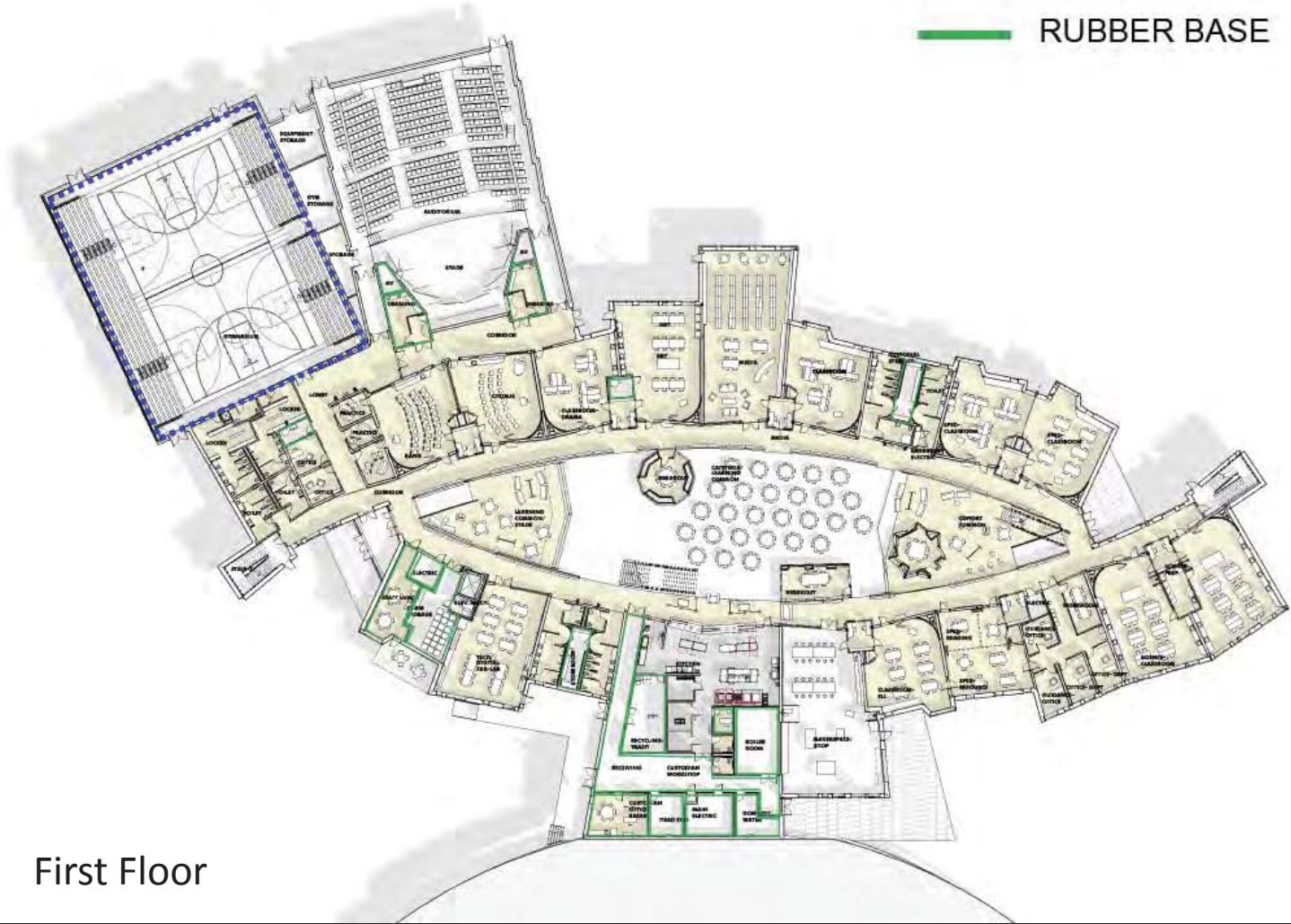


First Floor

Finishes BASE

■■■■■■ VENTED BASE

———— RUBBER BASE

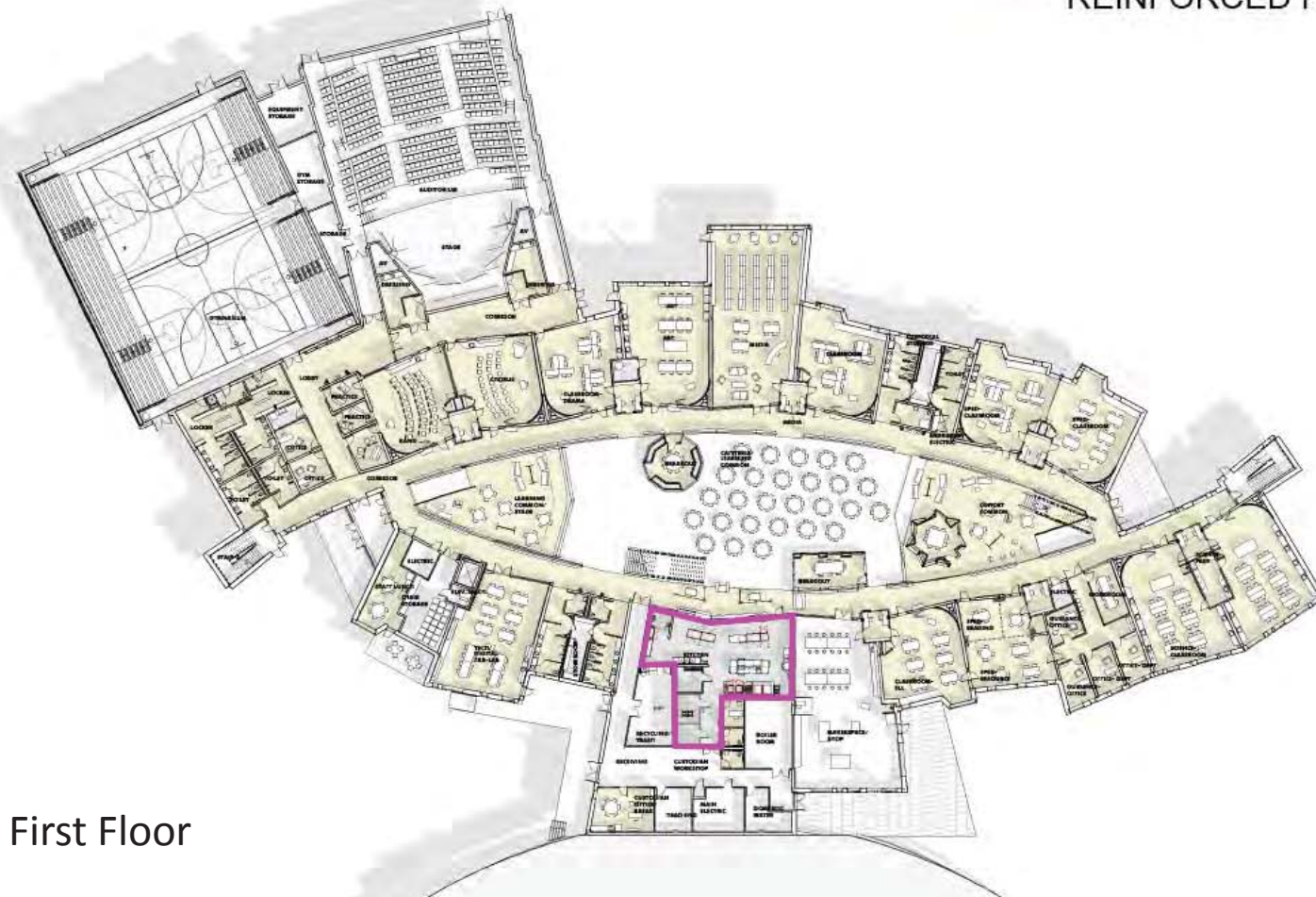


First Floor

Finishes

FIBERGLASS REINFORCED PANELS

— FRP - FIBERGLASS REINFORCED PANELS



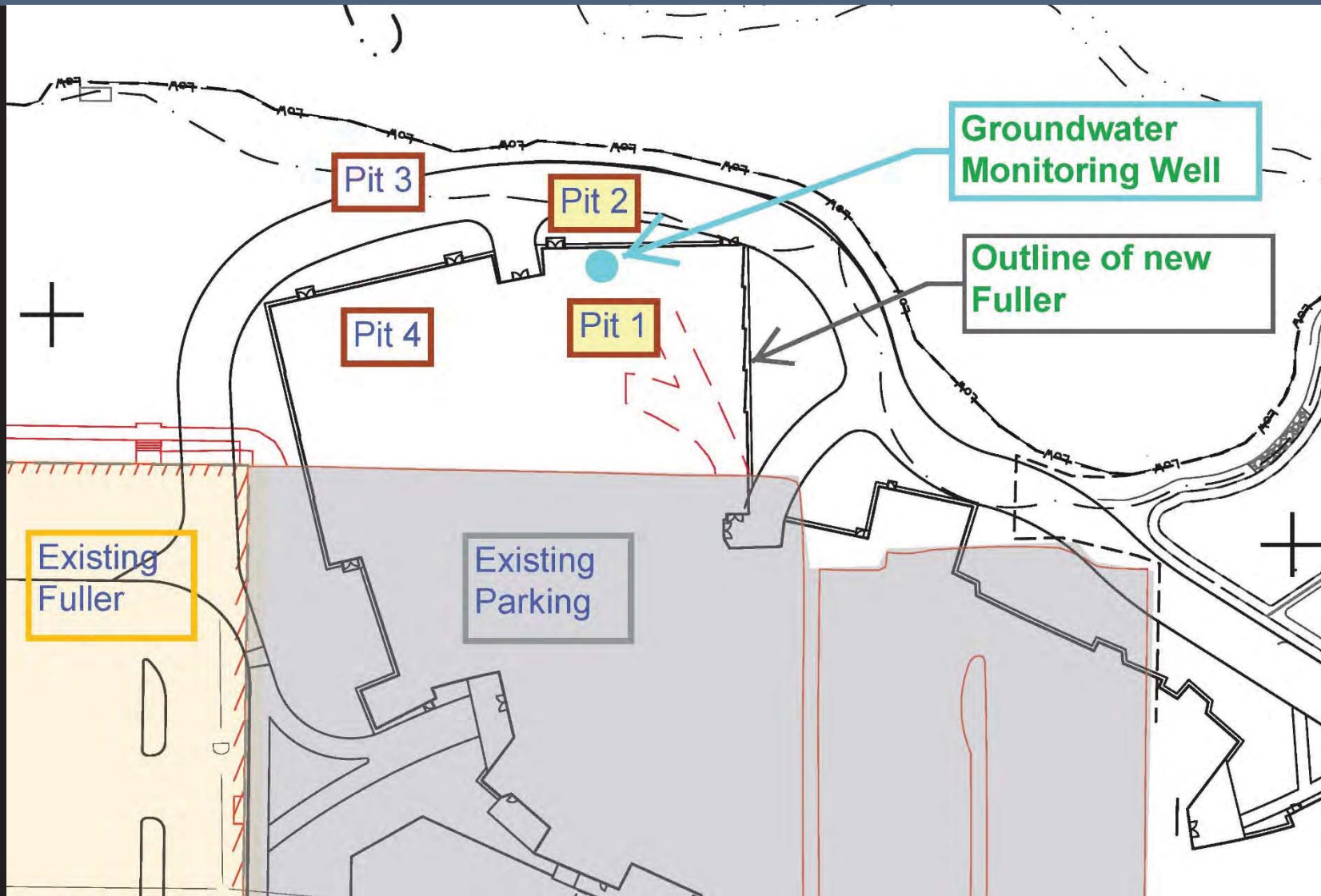
First Floor

HVAC Systems Update

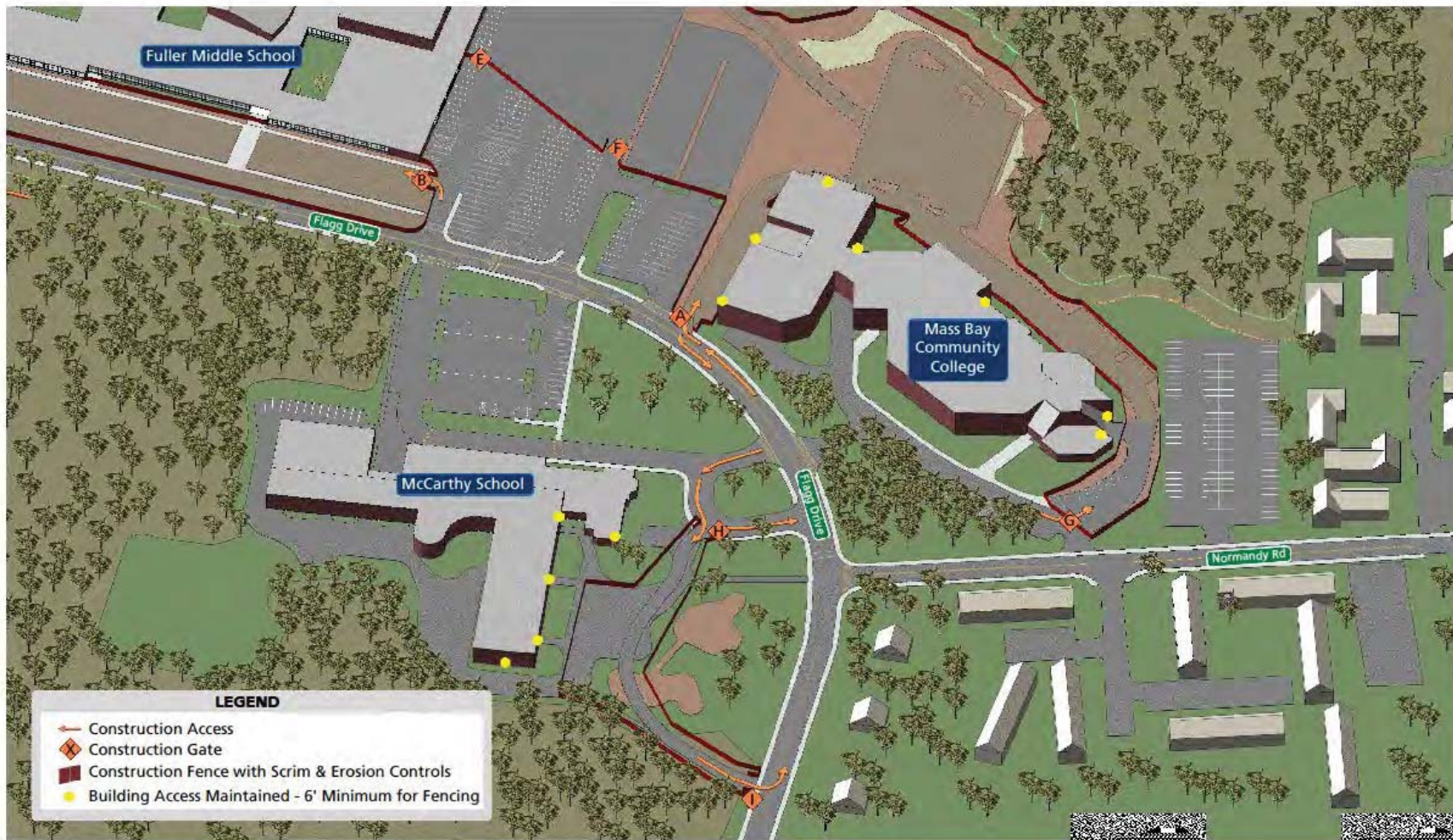
On 6/13/19 the FPS Building and Grounds department and GGD reviewed DD HVAC design refinements . Items discussed included the HVAC Boiler Plant and Chiller Plant sizing in relationship to the building heating/cooling loads, redundancy, and rooftop unit configuration. It was agreed the developed design modifications are acceptable to Building and Grounds.

Additional review will take place after the 60% CD set is issued in August.

GeoEnvironmental Findings



Site Logistics

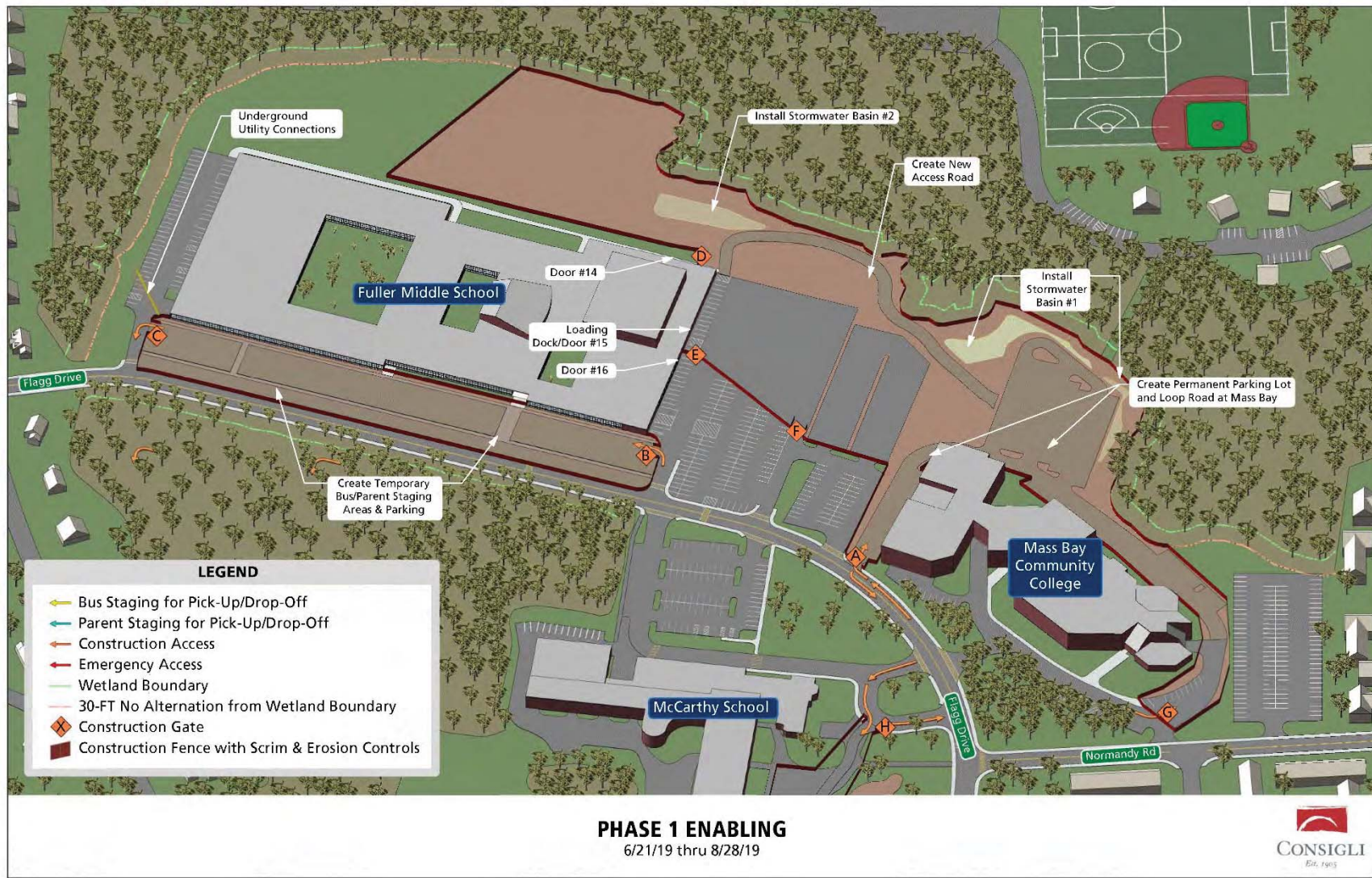


PHASE 1 ENABLING - MCCARTHY & MASS BAY EGRESS

6/21/19 thru 8/28/19



Site Logistics





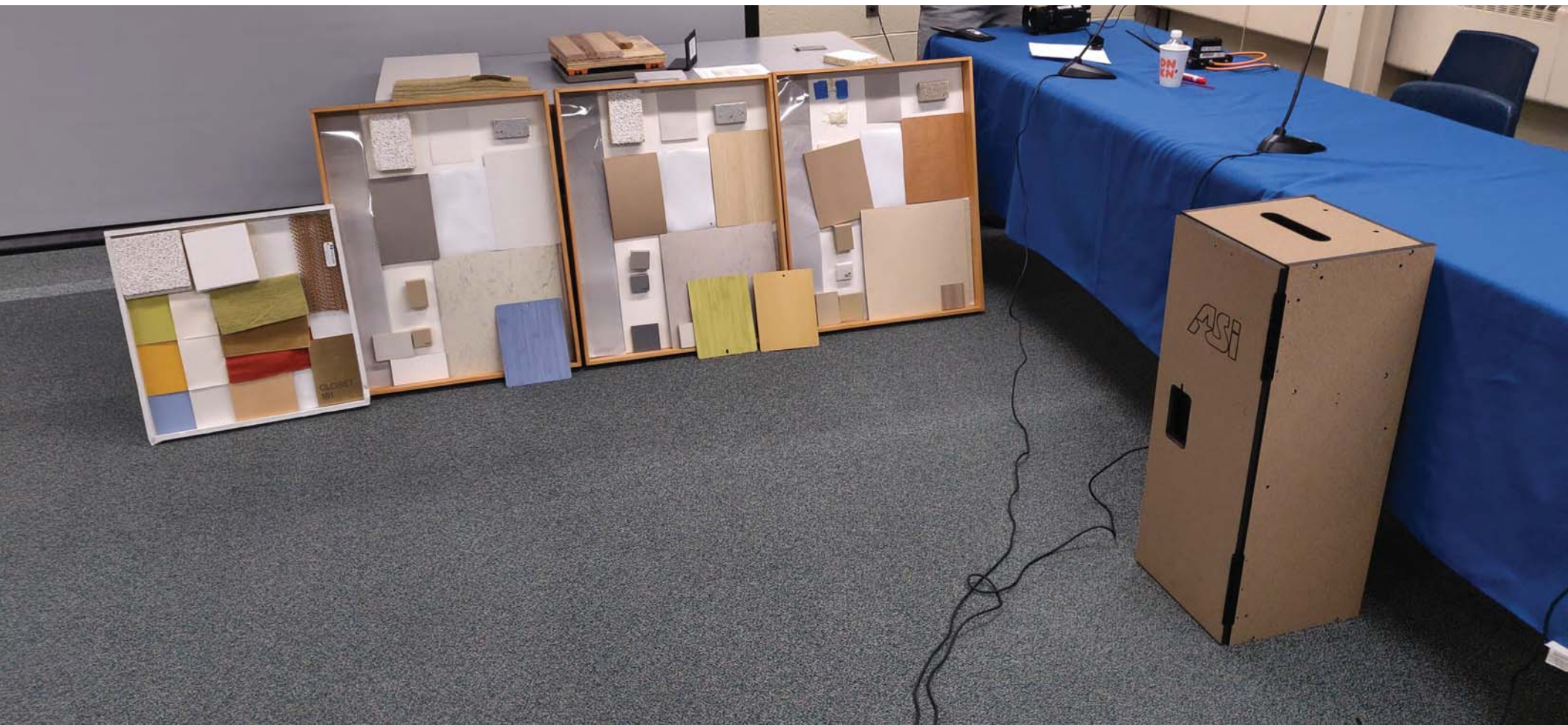
OPTION 1



OPTION 2



OPTION 3



A printed document, likely a technical specification or inventory list, is laid out on the table. It features a grid of columns and rows. Several cells within the grid are highlighted in yellow, indicating specific data points or sections of interest.